

Profile Bending Tool

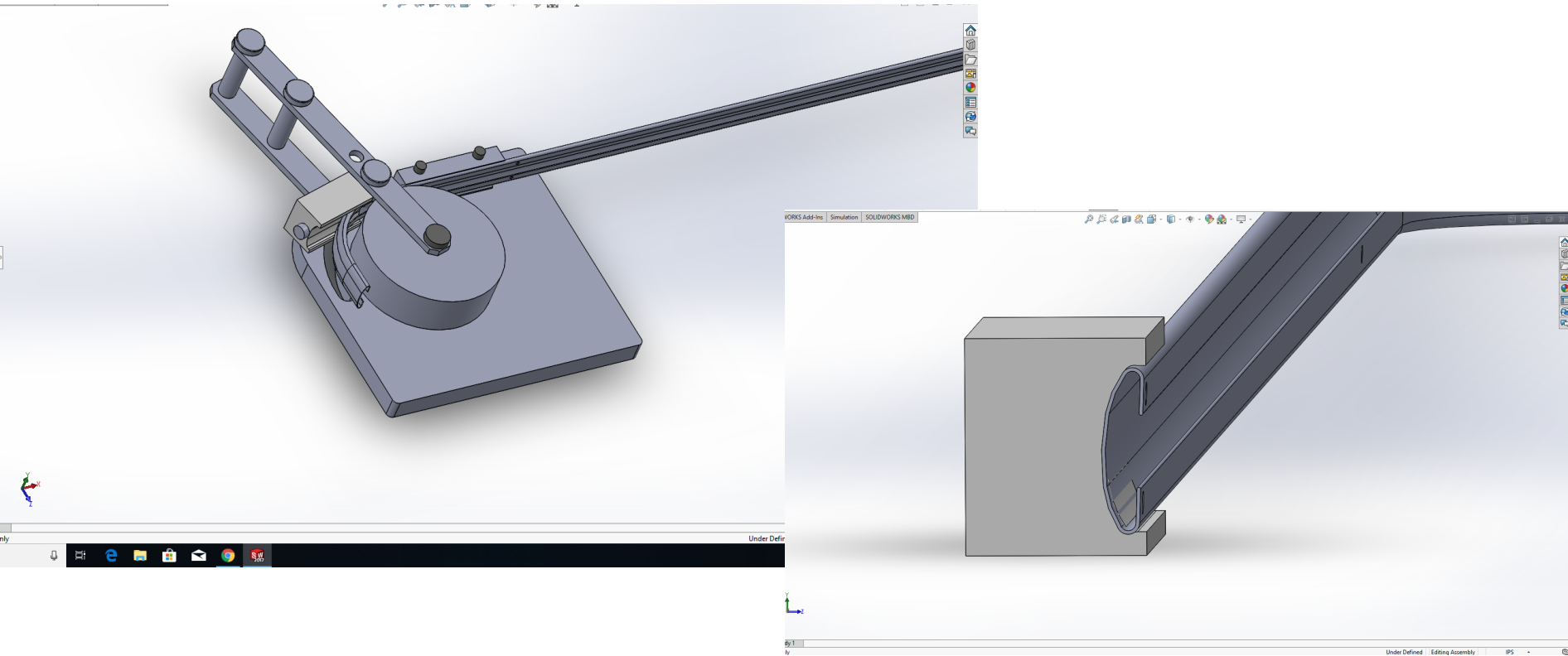
Brandon Amos, Thomas Kutter,
Donnie Olano, Vince Vaughn
LSU

Overview

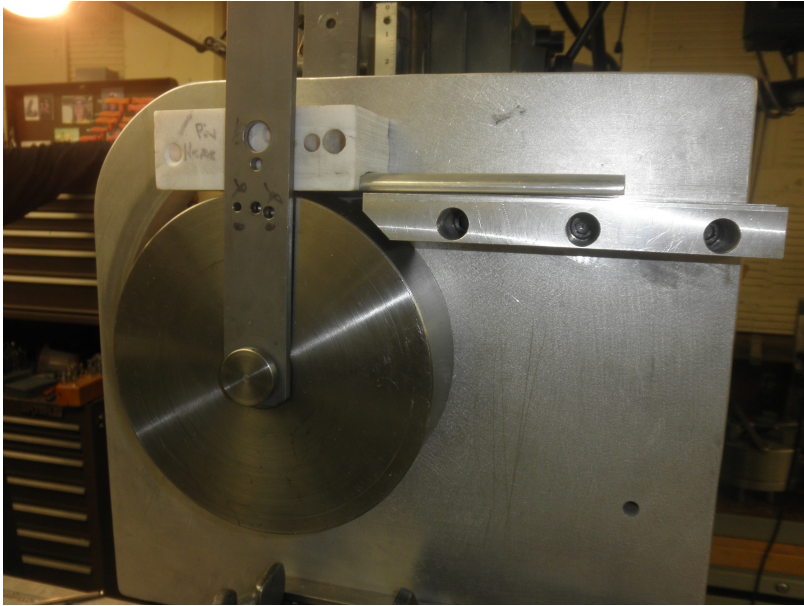
- Profile bending tool
- Quality criteria

Status Profile Bending Tool

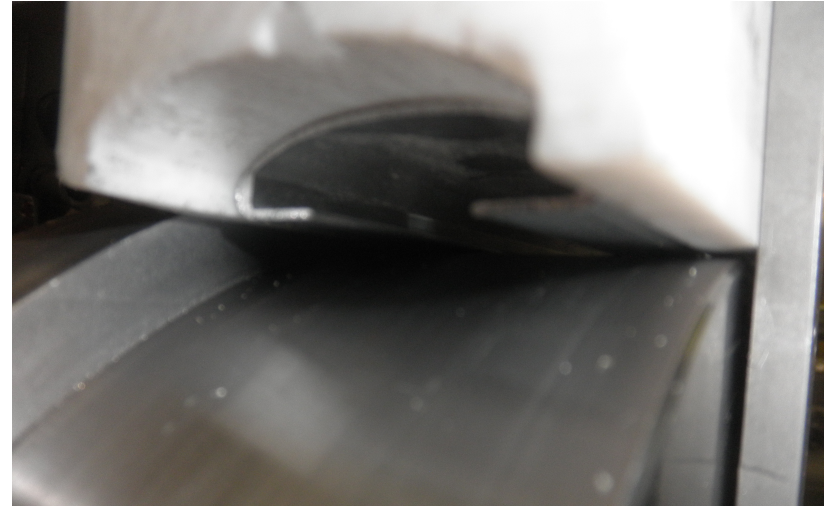
Model of profile bender



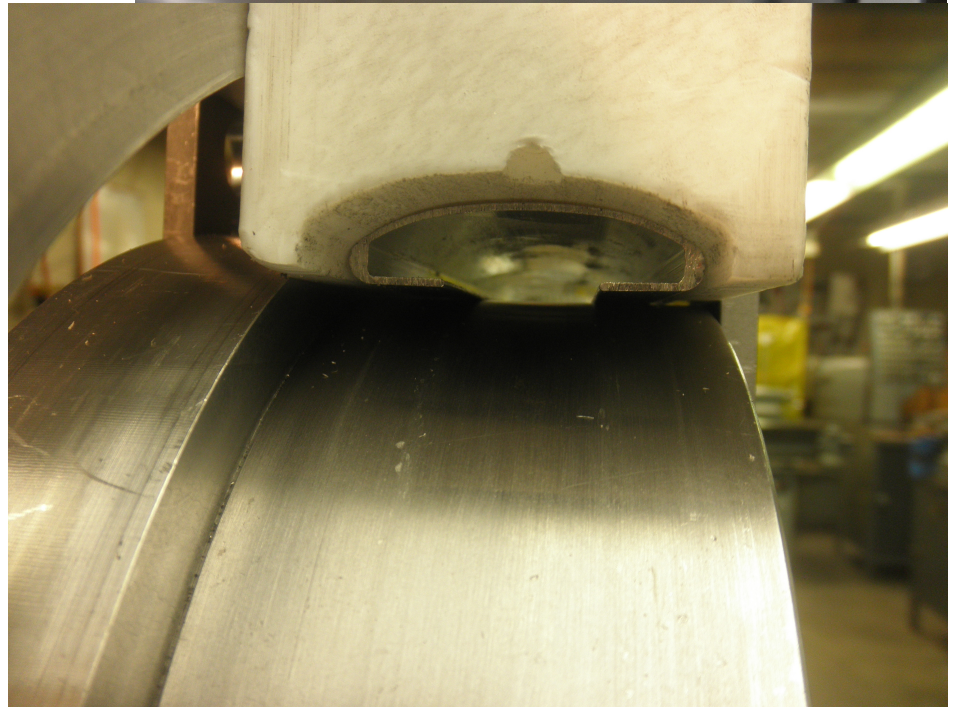
Setup Details



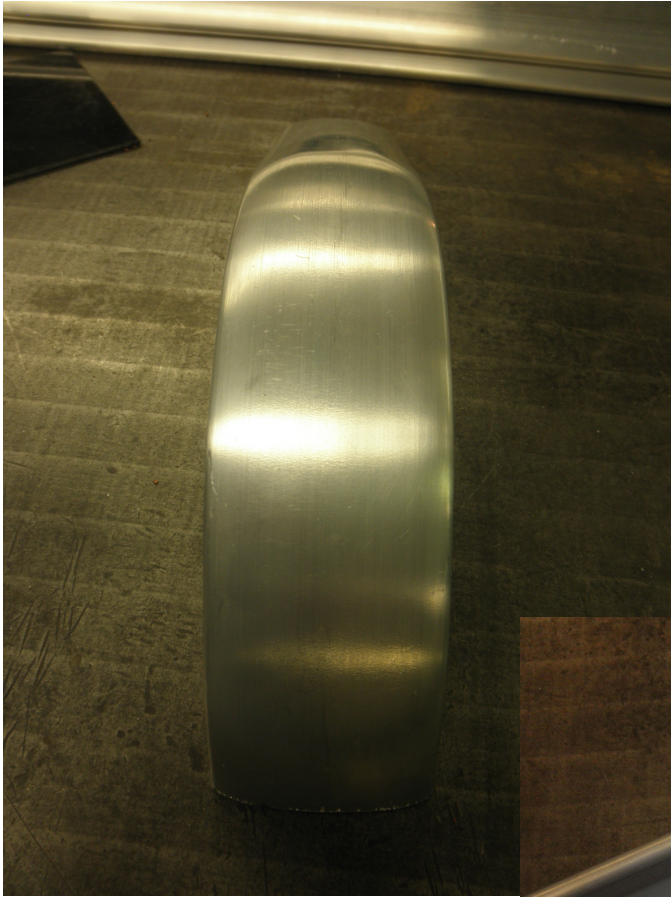
Alignment process



Verification of fit between
Profile and teflon block



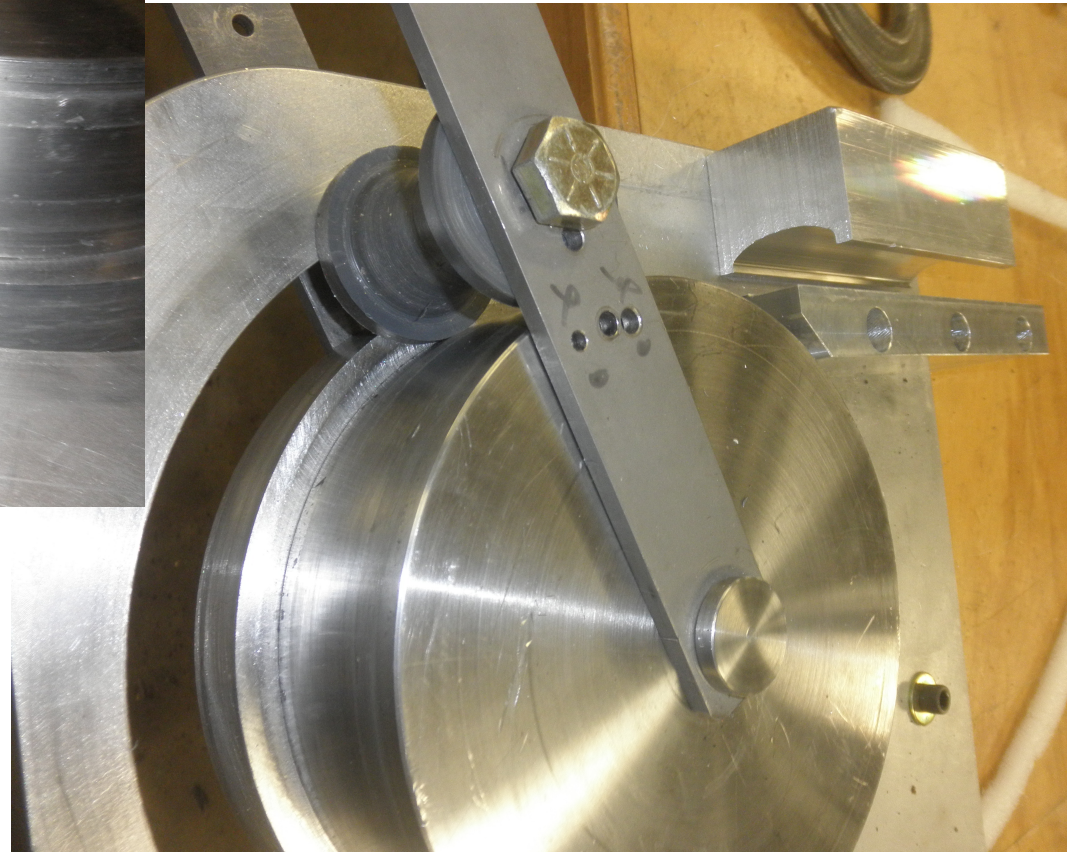
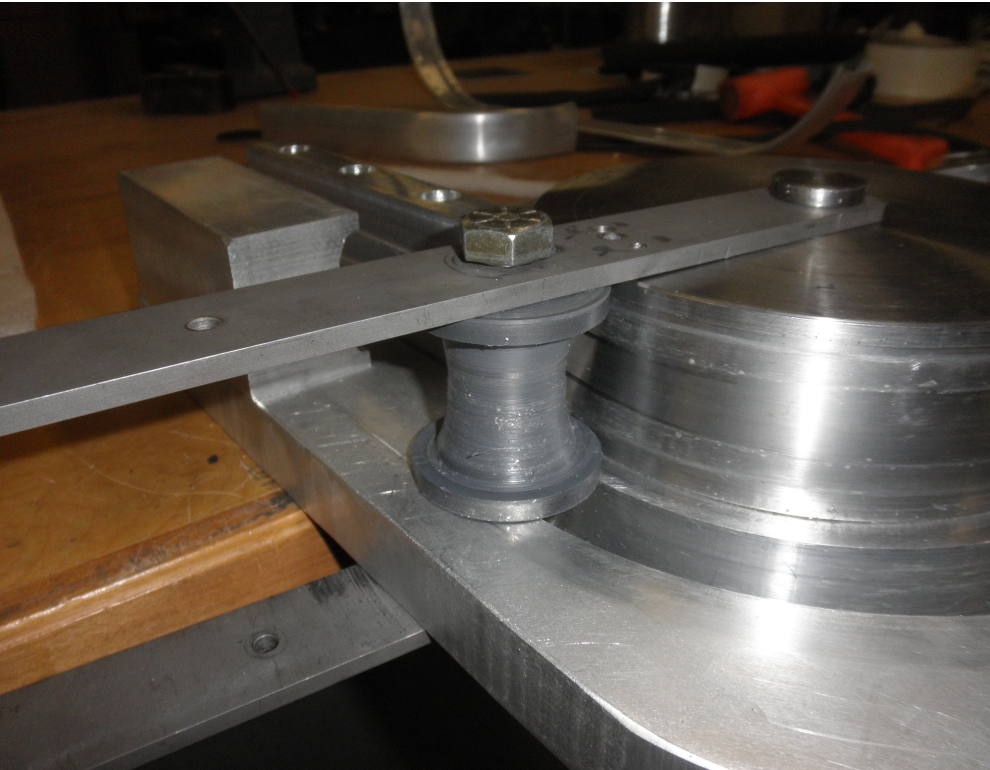
Bent Profiles



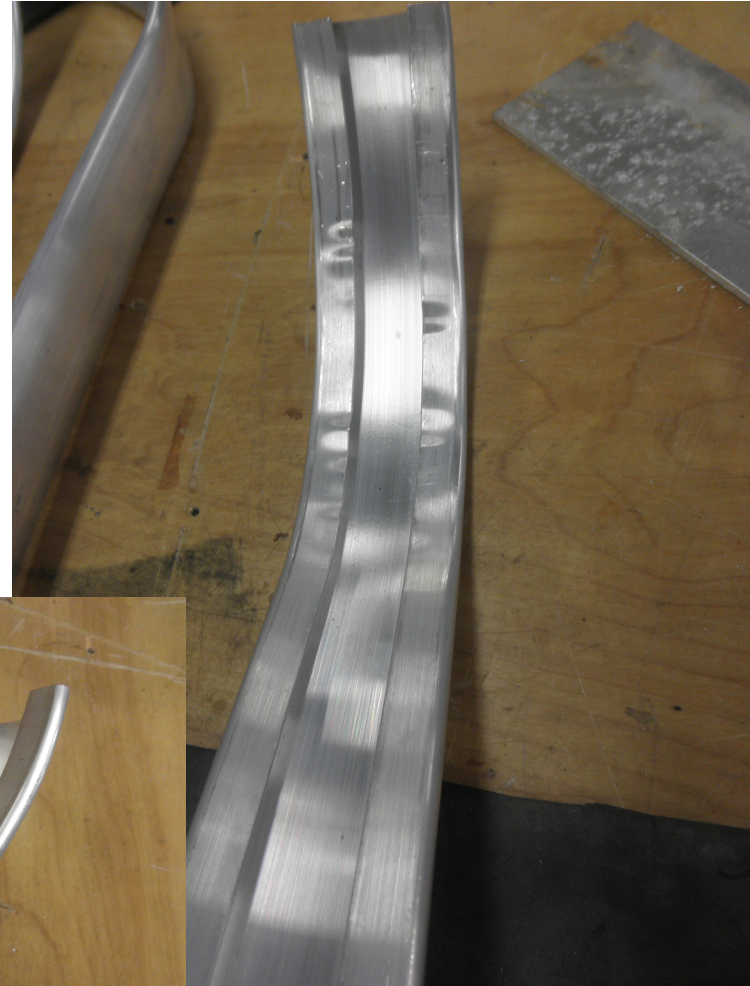
Bent Profiles



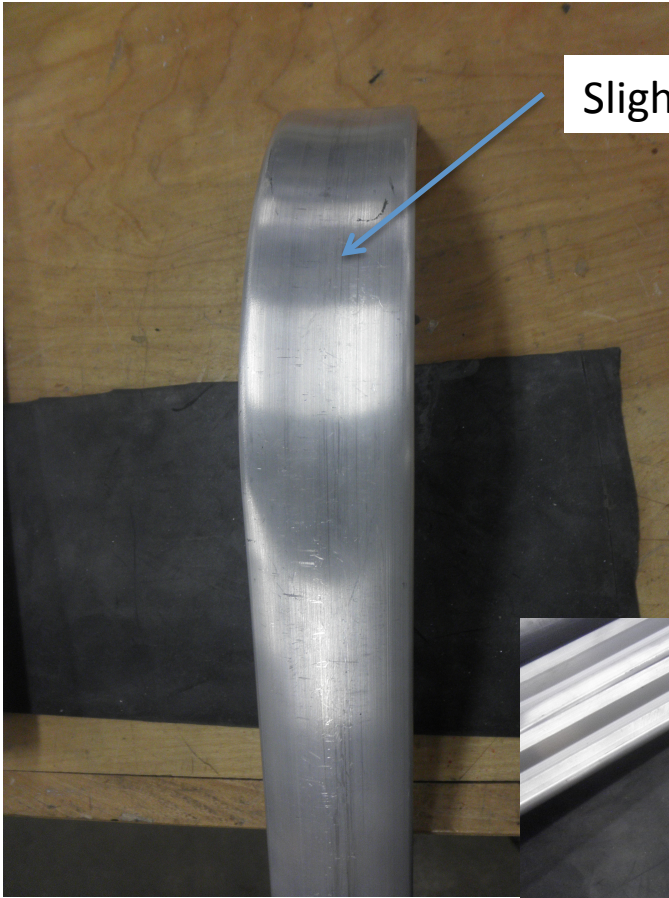
Modified Bending Setup



Bent Profiles



Modified Rubber/Foam Insert



Slight collapse of outer bend



Modified Rubber/Foam Insert



Profile legs bend inwards
Used foam too soft



Foam insert

Questions

What are most critical quality criteria for bend in profiles ?

Are waves on inside acceptable ?

What level of collapse of outer shape is acceptable ?

Can CERN polymer lab provide somewhat softer insert ?

...