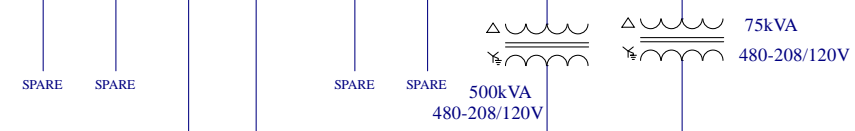
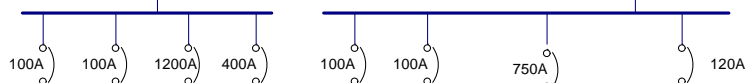


12.47kV feed from substation

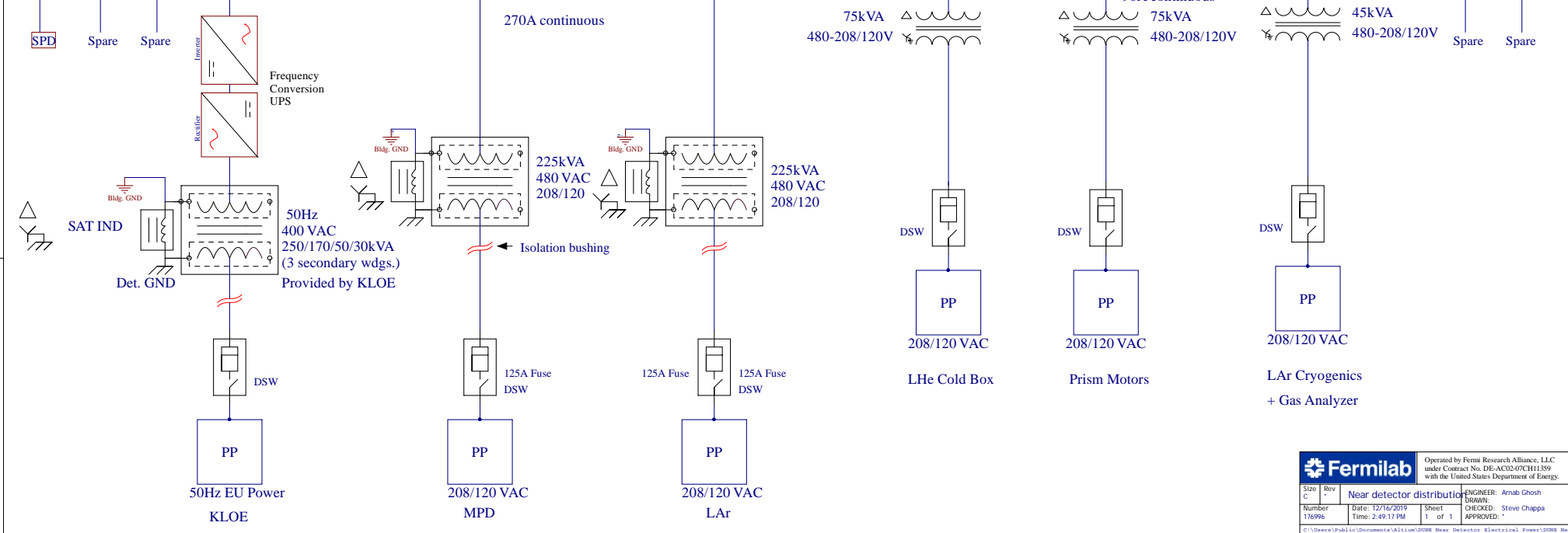


LHe Cryo Plant DAQ Room +UPS

Legends
 DSW: Disconnect switch
 PP: Power Panel

Notes
 1. Isolation bushing between 225kVA transformer housing and secondary conduit.
 2. Secondary conduit mounting hardware is tied to detector ground only.

Above ground
Underground



		Operated by Fermi Research Alliance, LLC under Contract No. DE-AC02-07CH11559 with the United States Department of Energy.	
Size C	Rev 1	Near detector distribution	
Number 176996	Date: 12/16/2019	Time: 2:49:17 PM	Sheet 1 of 1
ENGINEER: Anub Ghosh		DRAWN: Steve Chappa	
CHECKED: Steve Chappa		APPROVED: [Signature]	
<small>© Fermilab. All rights reserved. Fermilab is a U.S. Department of Energy Office of Science Laboratory. Fermilab is managed by Fermi Research Alliance, LLC for the U.S. Department of Energy under contract number DE-AC02-07CH11559.</small>			