

DUNE-SP

Technical Integration

January 9th, 2020

KDZ and others

kzeug@psl.wisc.edu

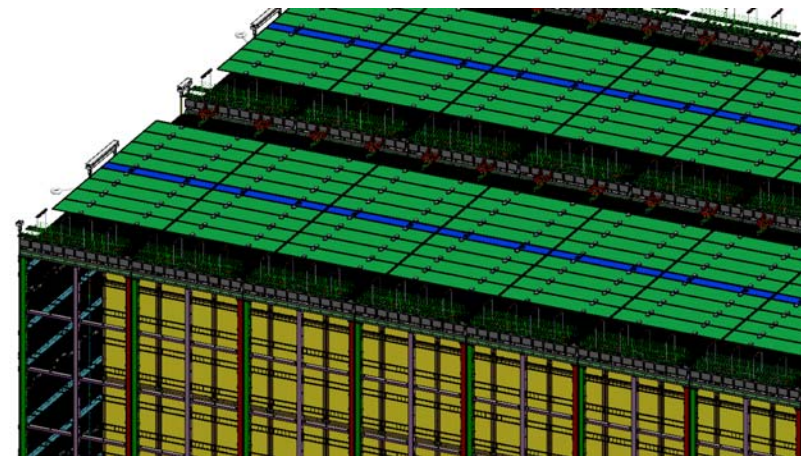
608-877-2284

Rough Agenda

- Detector Model Updates: Kyle
- Detector Mass: Kyle
- What are your consortium priorities for interfaces over the next few months?
- Global model v5 changes, layout drawings and upcoming v6: Jack
- Review Schedule: Steve
- Notes from Terri
- Notes from Eric
- AOB

Detector Model Updates

- Material posted from HV on Dec. 31st
 - Received Jan. 3rd
- Field cage to APA latches were presented December 19th
 - Small group follow-up took place Jan. 6th



Summary of Detector Mass Data

Consortia	Mass Data
TPC CE	Mass Data Received
HV	Mass Data Received
PDS	Not Received
APA	Not Received

- Information will be kept and maintained at EDMS 2281422

Consortium Priorities for Interfaces

- Thank you, Bo, for your input
 - Several items in queue for February
 - Slides presented by Francesco
- Questions posed by Calibration (Jose)

AOB

- Suggestion for a future week:
 - Action item status from October 2019 Ash River Workshop
- Questions posed by Calibration (Jose)