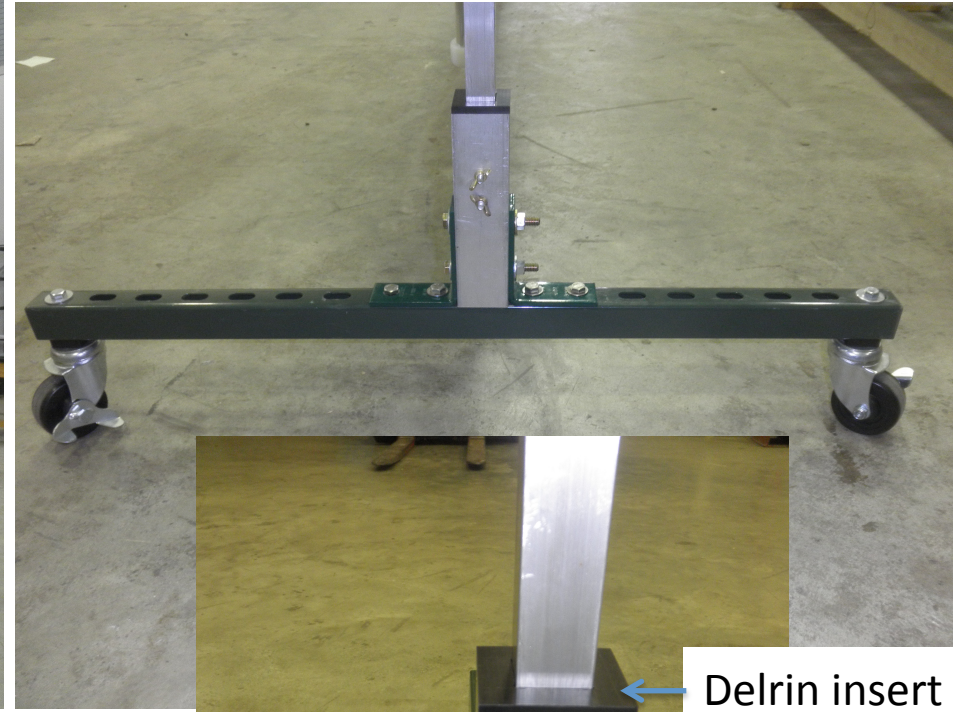
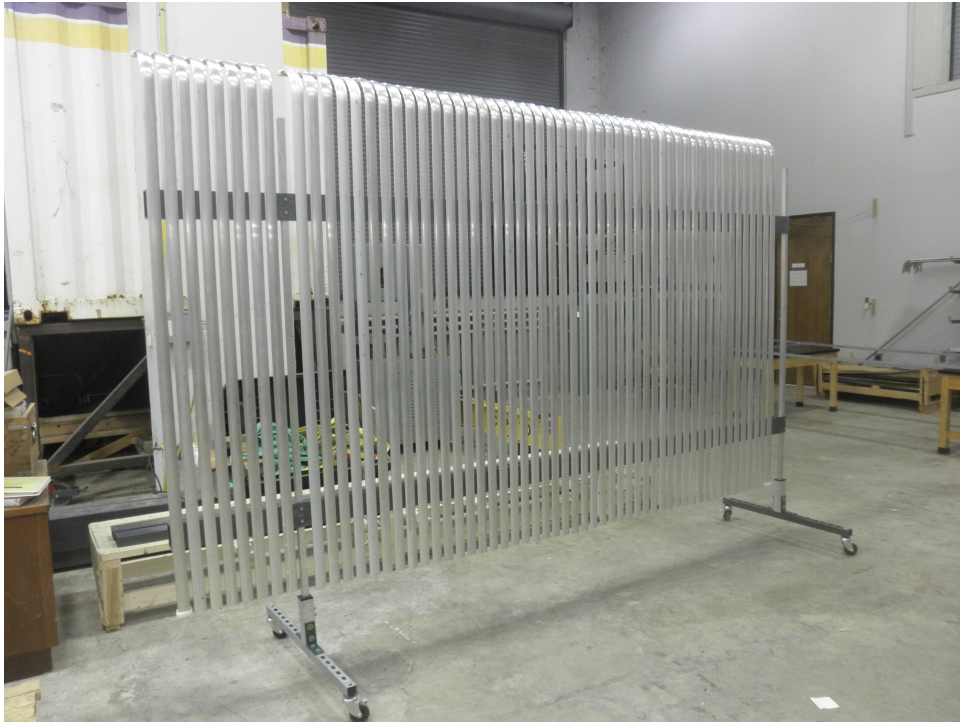


# **FC Endwall cart options comments**

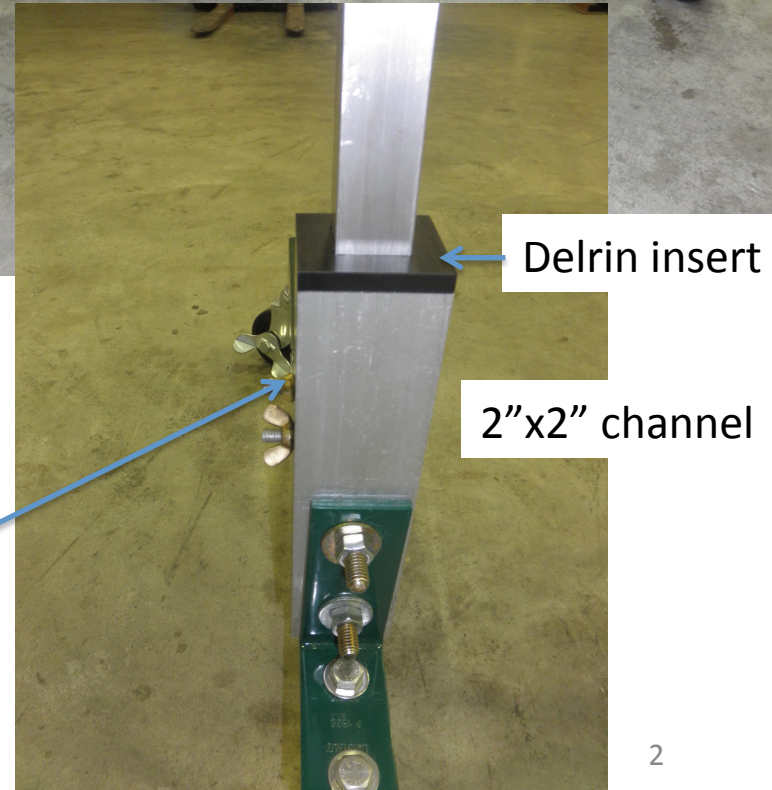
Thomas Kutter,  
LSU

# Temporary Storage



Roller bases:

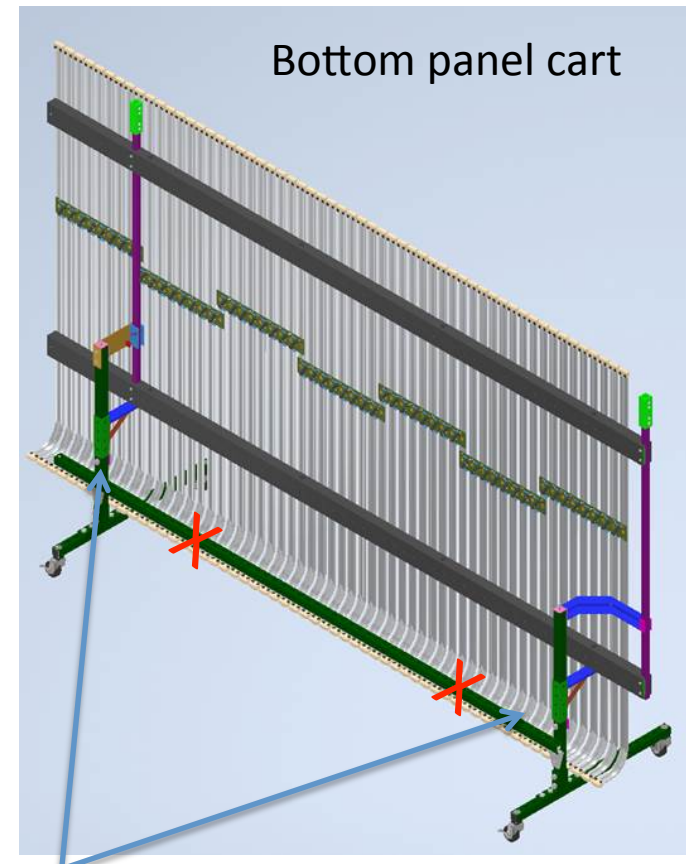
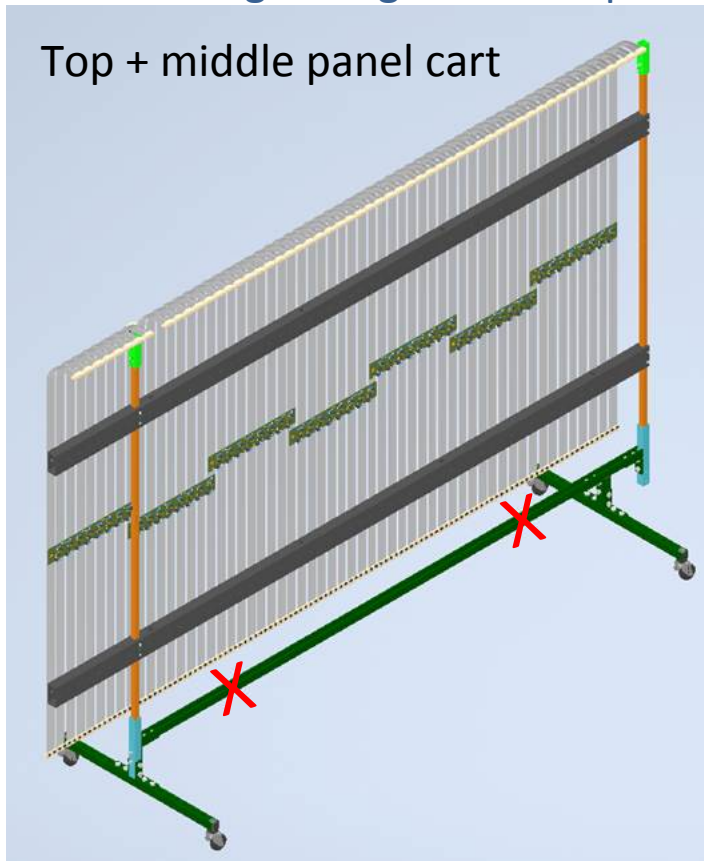
- Mount to module while in horizontal position
- Very quick mounting with wing nuts



# Alternate Design

Motivation: avoid interference with APAs during installation → move wheels inwards

Comment: remove middle connection bar to keep carts more universal (5100 vs 5200), lightweight and simple



Height adjustable features

Comment/question: Why is height adjustment needed ?

Hanging panels are adjustable via winch/crane.

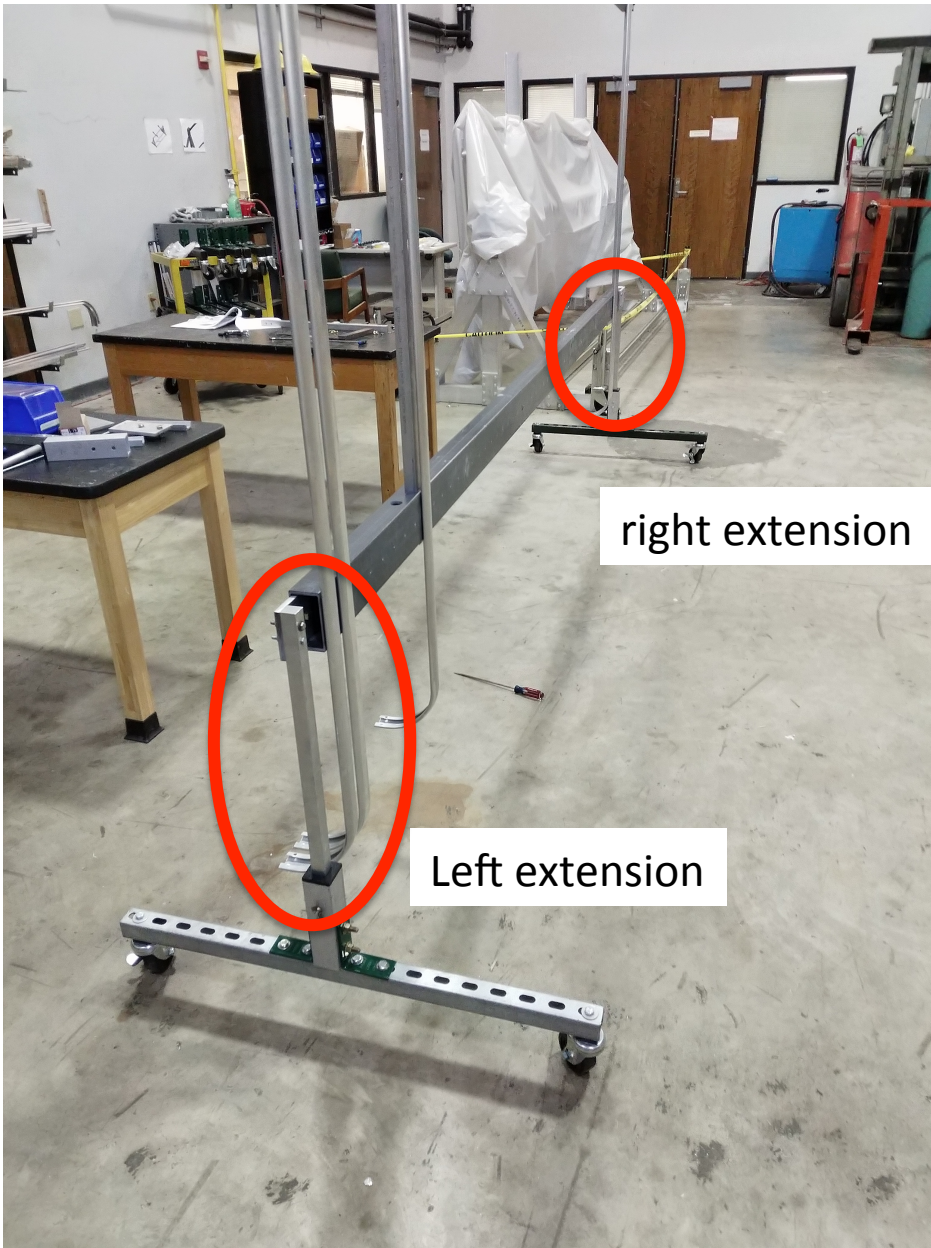
Probably don't need lower support features below FRP box beam (lower blue arm).



# Temporary Storage – Bottom Panel

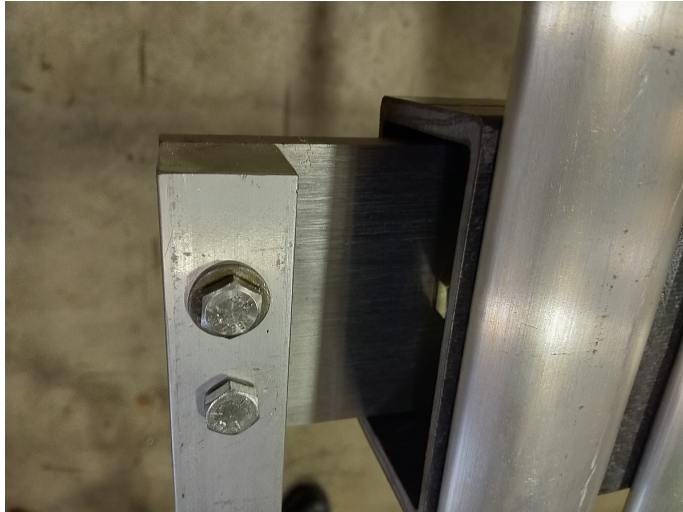
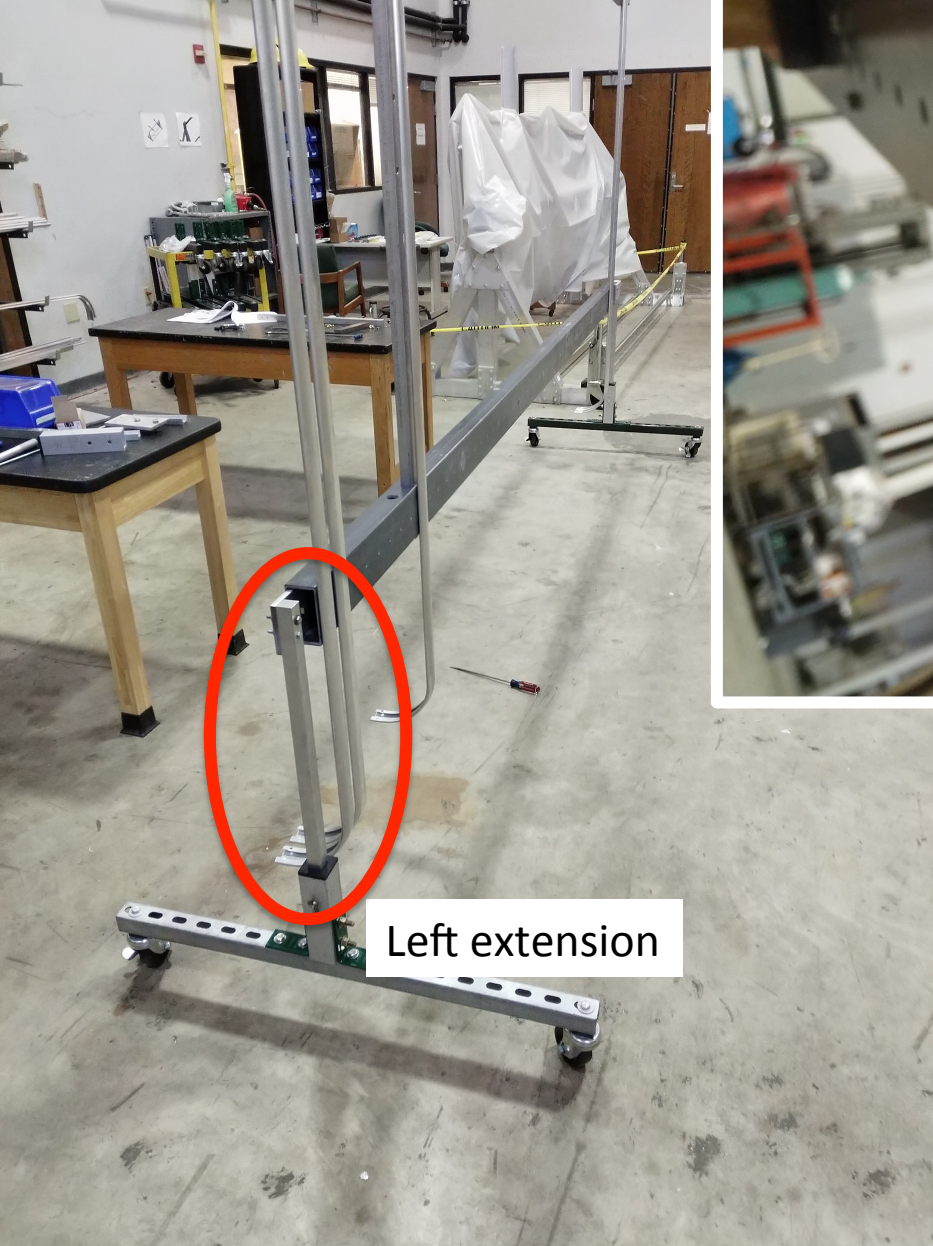
Roller bases:

- Same as for all other panels
- Add additional extensions
  - Specific for each side



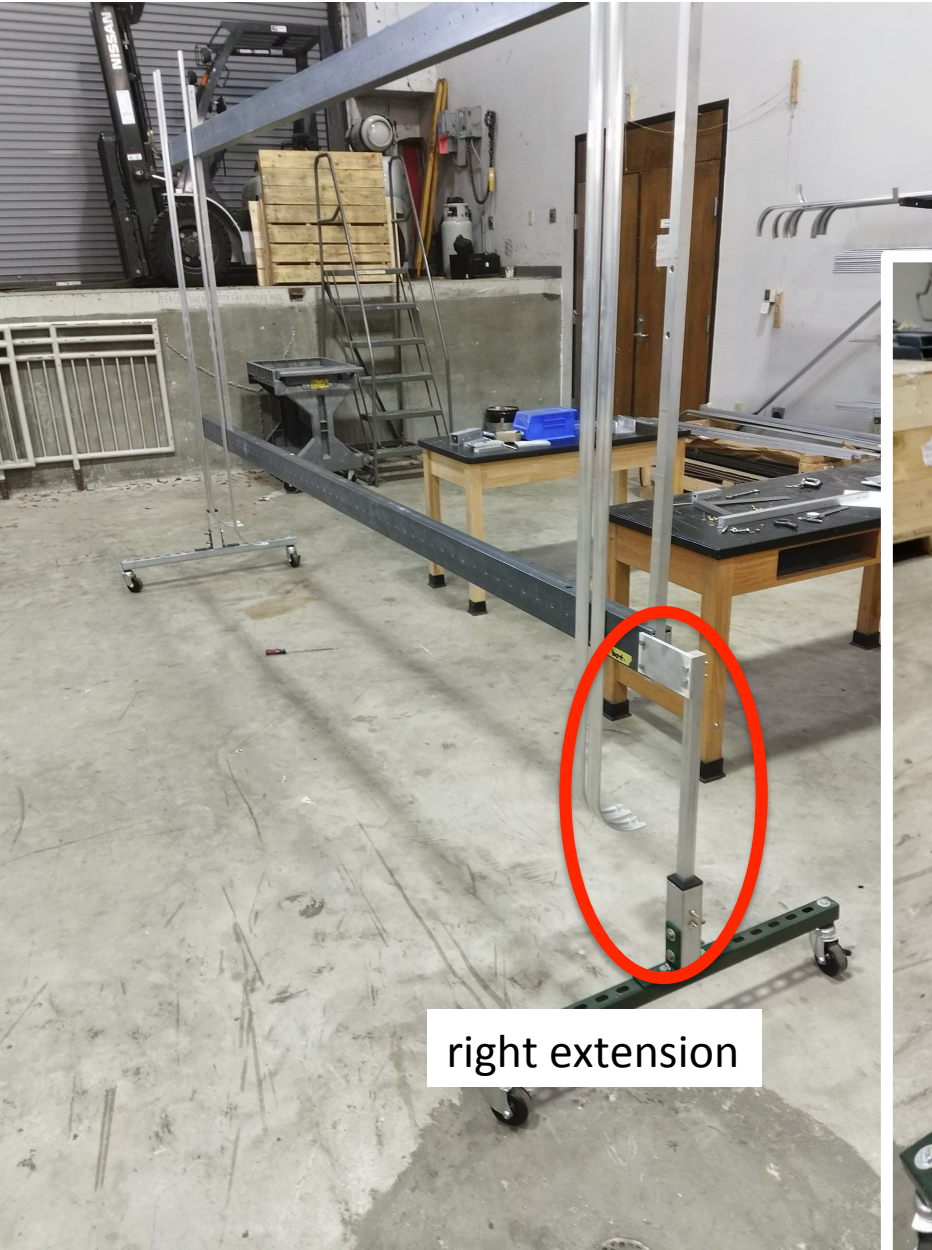


# Left Extension





# Right Extension





# Right Extension suggested new configuration

