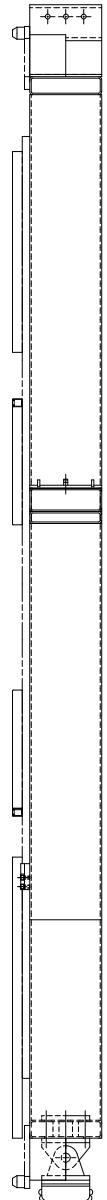
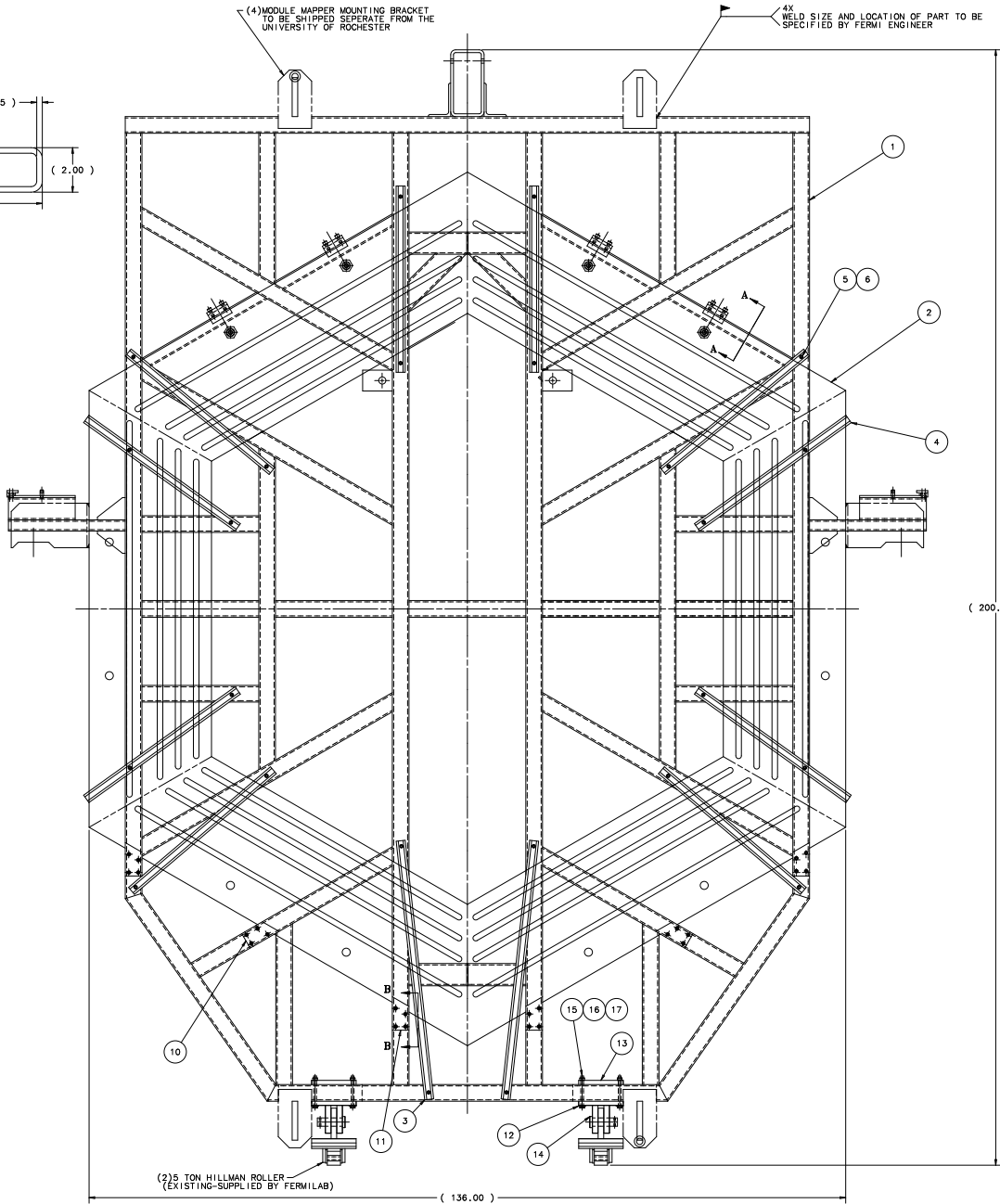
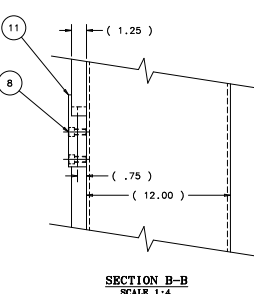
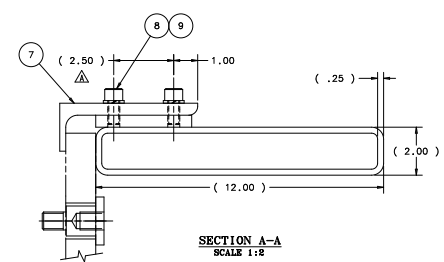
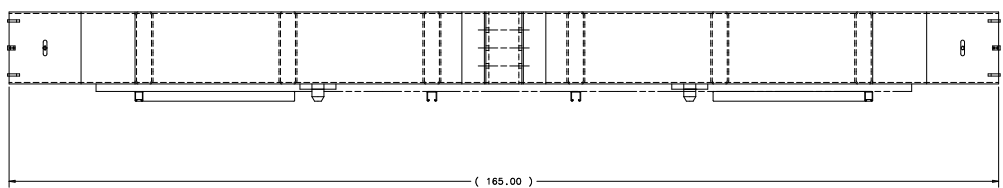


REV	DESCRIPTION	DRAWN	DATE
A	IDM FORCED REVISION	G. SMITH	11-JAN-2007
B	(2.50) WAS (2.00)	G. SMITH	11-JAN-2007



APPROX. WEIGHT = 6,200 LBS

ITEM	PART NO.	DESCRIPTION OR SIZE	QTY.
17	COML	FLAT WASHER - 1/2" SCREW SIZE PLAIN STEEL	12
16	COML	1/2-13 UNC-2B HEX NUT-STEEL GRADE 8	12
15	COML	1/2-13 UNC-2B HEX HD. SCREW X 6.00 LG.-STEEL GRADE 8	12
14	9213_300-MB 384126	PIN ROLLER PIVOT	2
13	MB-444144	CLAMP PLATE	2
12	9213_300-MC 384127	HILLMAN ROLLER PIVOT WELDMENT	2
11	MC-444127	STRONGBACK LOWER CLAMP PLATE R.H.	3
10	MC-444125	STRONGBACK LOWER CLAMP PLATE	3
9	COML	LOCK WASHER-1/2" SCREW SIZE PLAIN STEEL	16
8	COML	SOCKET HD. SCREW-STEEL GRADE 8 1/2-13 UNC-2A X 1.00" LG.	40
7	MB-444124	STRONGBACK CLAMP BRACKET	4
6	COML	LOCK WASHER-3/8" SCREW SIZE PLAIN STEEL	24
5	COML	SOCKET HD. SCREW-STEEL GRADE 8 3/8-16 UNC-2A X 1.00" LG.	24
4	COML	UNI STRUT P1000 - 33.50 LG.	10
3	COML	UNI STRUT P1000 - 46.75 LG.	2
2	MC-435704	PLAIN AND SUPPORT EAR WELDMENT	1
1	ME-435758	STRONGBACK WELDMENT	1

PARTS LIST

UNLESS OTHERWISE SPECIFIED	ORIGINATOR	J. KILMER	11-SEP-2008
XXX	ANGLES	DRAWN	G. SMITH
---	---	CHECKED	D. FRIED
1.	DRAWN ALL SHARP EDGES	APPROVED	J. KILMER
2.	DO NOT SCALE DIMENSIONS	USED ON	
3.	INDICATE ALL DIMENSIONS		
4.	INDICATE ALL HOLE SERVICES		

MATERIAL SEE PARTS LIST ABOVE

FERMI NATIONAL ACCELERATOR LABORATORY
UNITED STATES DEPARTMENT OF ENERGY

MINERVA - MECHANICAL
DETECTORS
STRONGBACK LAYOUT ASSEMBLY

SCALE 1:8	DRAWING NUMBER 3938_330-ME-44081	SHEET 1 OF 1	REV C
CREATED WITH: 160032005r1es	GROUP: PPD/MECHANICAL DEPARTMENT		