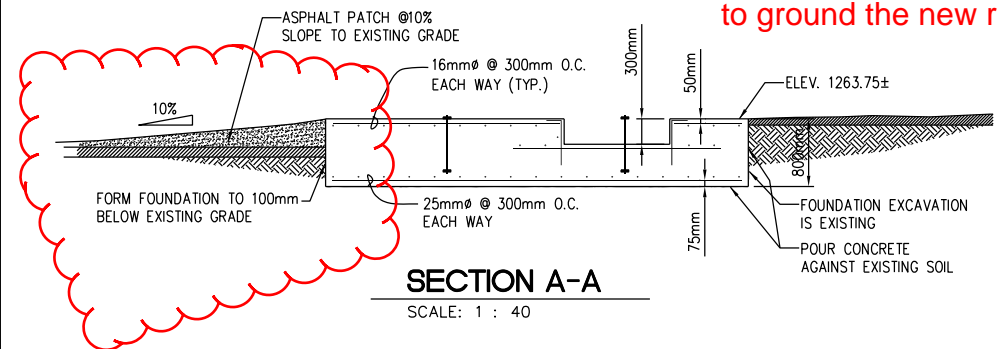


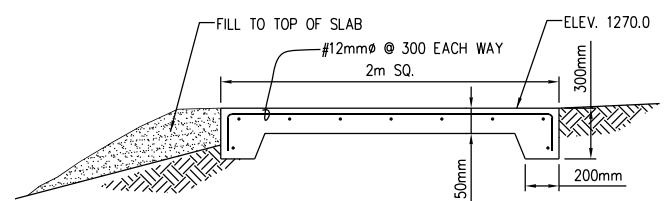
FOUNDATION SITE PLAN
SCALE: 1 : 200

Revise Foundation design (CTA -10-7-1) to accommodate slope? Do we we need to ground the new rebar using this spec?

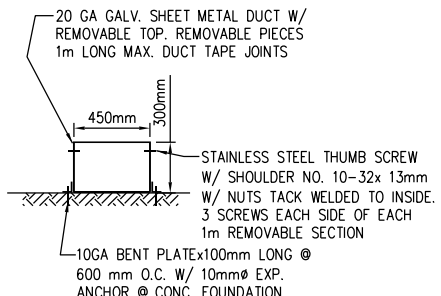


SECTION A-A
SCALE: 1 : 40

Revise Foundation design (CTA -10-7-1) to accommodate slope?



SECTION B-B
SCALE: 1 : 20



SECTION C-C
SCALE: 1 : 20

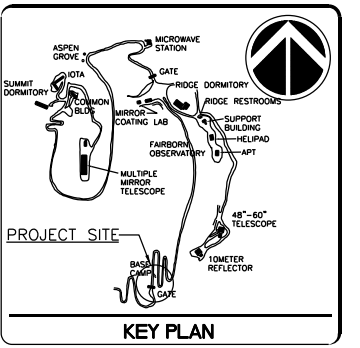
There is a possibility that the grounding system may be disturbed or damaged while doing the excavation, etc.

FOUNDATION PLAN
SCALE: 1 : 30

Do we we need to ground the new rebar using this spec? Repull grounding cable to base of pedestal?

SEE DRAWING S2 FOR CONCRETE CONSTRUCTION NOTES

M3 Engineering + Technology Corporation
ARCHITECTURE ENGINEERING TECHNOLOGY
Tucson, Arizona
Tel. (520) 690-8209 FAX NO. (520) 293-8177



GRAPHIC SCALE(S)

DATE	SUBMISSION
01/10/03	FINAL (100%)
REVISION	
REVISION 1	
REVISION 2	
REVISION 3	
REVISION 4	
REVISION 5	
REVISION 6	
REVISION 7	

Smithsonian Institution
Office of Facilities Engineering and Operations
750 9th Street N.W., Suite 5200
Washington DC 20560-0908

BUILDING NAME	670 MT. HOPKINS ROAD AMADO, ARIZONA		
PROJECT TITLE	VERITAS PROTOTYPE FDN.		
USED PROJECT NUMBER	0382102		
A/E PROJECT NUMBER	M3 PN02260		
DRAWING TITLE	FOUNDATION PLAN		
DRAWING TYPE	STRUCTURAL DETAILS		
WORKING STAFF	DN	AC	DN
DESIGNED BY	DN	AC	DN
CHECKED BY			
SHEET NO.	S	0	1
OF	DISCIPLINE	TYPE	SEQUENCE