

4

3

2

1

D

C

B

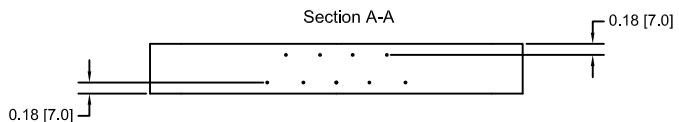
A

D

C

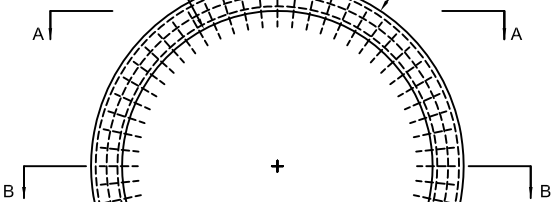
B

A



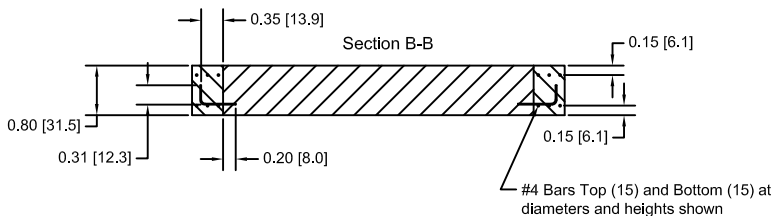
$\varnothing 5.00$ [$\varnothing 197.0$]
OD of old concrete

$\varnothing 6.00$ [$\varnothing 236.4$]
OD of new concrete



#6 Rebar
30 Top and 30 Bottom
Layers – Evenly Spaced
Top/bottom layers rotated 6deg relative
to each other– see Note 1

$\varnothing 5.15$ [$\varnothing 202.9$]
 $\varnothing 5.50$ [$\varnothing 216.7$]
 $\varnothing 5.85$ [$\varnothing 230.5$]



#4 Bars Top (15) and Bottom (15) at
diameters and heights shown

Note 1: Radial #6 rebar secured in existing concrete using Hilti HVA Capsule Adhesive Anchoring System. HIT-RE500 Epoxy Adhesive. 7/8" Diameter hole drilled 8" deep into existing concrete.

Note 2: Use Grade 60 rebar. Use standard hook details

Note 3: Any imported engineering fills shall have the following gradation by weight:

- 100% passing 150mm sieve
- 70-100% passing 75mm sieve
- 50-100% passing #4 sieve
- Plasticity index 15 max


Slab base course shall have compaction to 95% and:

- 100% passing 38mm sieve
- 45-90% passing #4 sieve
- no more than 12% passing #200 sieve

Note 4: Concrete shall be ready mixed conforming with ASTM C-94 and attain a minimum strength of 4000 psi after 28 days.

DWG NO

DWG NO

| | | |
|--|---------------|------------|
| ITEM NO | NEXT ASSEMBLY | REQD |
|  THIS DRAWING IS THE PROPERTY OF ARGONNE NATIONAL LABORATORY | | |
| TITLE | | |
| Modifications to VERITAS Foundation | | |
| DRAWING NUMBER | | |
| SCALE | SHEET OF | REV |
| | | CTA-10-7-1 |

| | | | |
|----------------------|--------|---------------|------|
| RECORD NUMBER | | | |
| DRAWN BY | DATE | GP LEADER | DATE |
| vjg | 1/9/14 | | |
| CHECKED | | PROJECT MGR | |
| RESPONSIBLE ENGINEER | | APVD/RELEASED | |
| MATERIAL | NA | | |

| | | | | | | |
|--|--------|--|--|--|--|--|
| UNLESS OTHERWISE NOTED | | | | | | |
| ALL DIMENSIONS ARE INCHES | | | | | | |
| DECIMAL TOLERANCE | | | | | | |
| X | ± .1 | | | | | |
| .XX | ± .02 | | | | | |
| .XXX | ± .005 | | | | | |
| ANGULAR TOL ±1/2° | | | | | | |
| FRACTIONAL TOL ±1/64 | | | | | | |
| REMOVE ALL BURRS AND SHARP EDGES | | | | | | |
| SURFACES TO BE IN ACCORDANCE WITH LATEST AMSI D44.1 | | | | | | |
| DIMENSIONS & TOLERANCES IN ACCORDANCE WITH LATEST AMSI Y14.5 | | | | | | |

| | | | | | | |
|-----|--------|----|------|------|------|------|
| SYN | CHANGE | BY | CHKD | DATE | APVD | DATE |
| | | | | | | |
| | | | | | | |
| | | | | | | |
| | | | | | | |
| | | | | | | |
| | | | | | | |

4

3

2

1