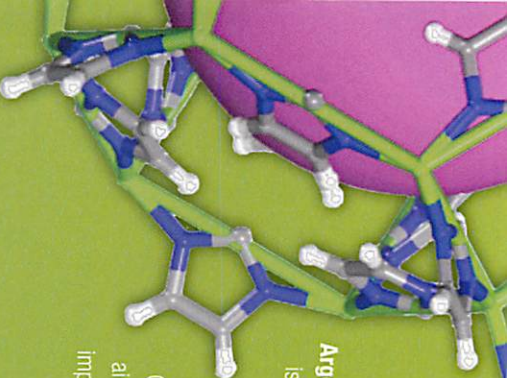


BUILDING LOCATOR (Building Number – Grid Location)

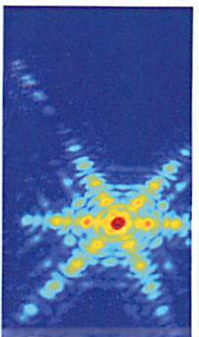
East Area	100 Area	200 Area	206 – C2	221 – D2	300 Area	314 – D4	340 – D3	360 – E4	370 – E4	400 Area	415 – C4	435 – C4	450 – C4	600 Area	OFFSITE	
046 – F2	108 – E2	200 – C2	208 – C2	222 – D2	302 – D3	315 – D4	350 – D4	361 – E4	371 – E4	400 – C4	420 – C4	436 – C4	460 – C3	600 – E3	900 Area	951 – G2
091 – G3	145 – F2	201 – D2	211 – C2	223 – D2	306 – D4	316 – D4		362 – E3	376 – E4	401 – C4	431 – C4	437 – C4	484 – B4	617 – E3	950 – G3	952 – G2
	146 – F2	202 – D2	212 – D2	224 – D1	308 – D3	331 – D4		363 – E4	399 – E4	402 – C4	432 – C4	438 – C4				953 – G2
		203 – D2	213 – D2	233 – D2	309 – D3	333 – D3		366 – E4		411 – C4	433 – C4	440 – C4				
		204 – E2	214 – D3	240 – D1		335 – D4		369 – E4		412 – C4	434 – C4	441 – C4				
		205 – D2, D3	216 – D2	291 – D1										800 Area		
														891 – B2		



Argonne National Laboratory is one of the U.S. Department of Energy's largest national laboratories for scientific and engineering research. Our scientists and engineers aim to solve the nation's most important challenges in energy, the environment and national security.

Argonne

about



Our mission

is to apply a unique mix of world-class science, engineering and user facilities to deliver innovative research and technologies. We create new knowledge that addresses the most important scientific and societal needs of our nation. Argonne conducts R&D in many areas of basic and applied science and engineering. We work with universities, industry and other national laboratories to discover new knowledge and develop useful new technologies.

for more information, please visit

anl.gov

Safety & Security

At Argonne we are dedicated to the safety and security of all of our employees, visitors and neighbors. As your safety is our first concern, please observe the following rules and precautions:

Emergency – In case of any emergency, accident, injury or serious illness, dial 911 from any on-site telephone or 630.252.1911 from your cell phone.



Traffic – All Illinois Rules of the Road apply while driving on the Argonne National Laboratory site. Speed limits are strictly enforced and you are required to

yield to pedestrians at all crosswalks. The use of mobile communications devices is prohibited while driving on site. Please be courteous of pedestrians, cyclists, wildlife, etc.

Safety – Anyone at anytime has the authority to stop any activity they consider unsafe. Helmets are required on-site if you are riding a motorcycle, bicycle or using any wheeled sporting equipment.

Badges – Employee ID badges or visitor gate passes are to be worn and visible at all times while on site.

Prohibited Items – Open containers of alcohol, firearms, weapons, incendiary devices, illegal drugs and pets are not allowed on site. All individuals entering laboratory property are subject to vehicle search.

For any other questions or concerns, contact your Argonne host.



U.S. DEPARTMENT OF ENERGY

Argonne National Laboratory is a U.S. Department of Energy laboratory managed by UChicago Argonne, LLC
CEP_welcomebroch_111212c

WELCOME TO ARGONNE

