

# US ATLAS Tier 2 Storage Overview

Rob Gardner

OSG Storage Forum  
September 21-22, 2010

# Quick Overview

- US ATLAS has five Tier 2 centers
- Four are multi-site federations with varying degrees of integration
  - ATLAS Great Lakes (UM, MSU)
  - Northeast (BU, HU)
  - Midwest (UC, IU)
  - Southwest (UTA, OU)
  - Western (SLAC)

# Technologies

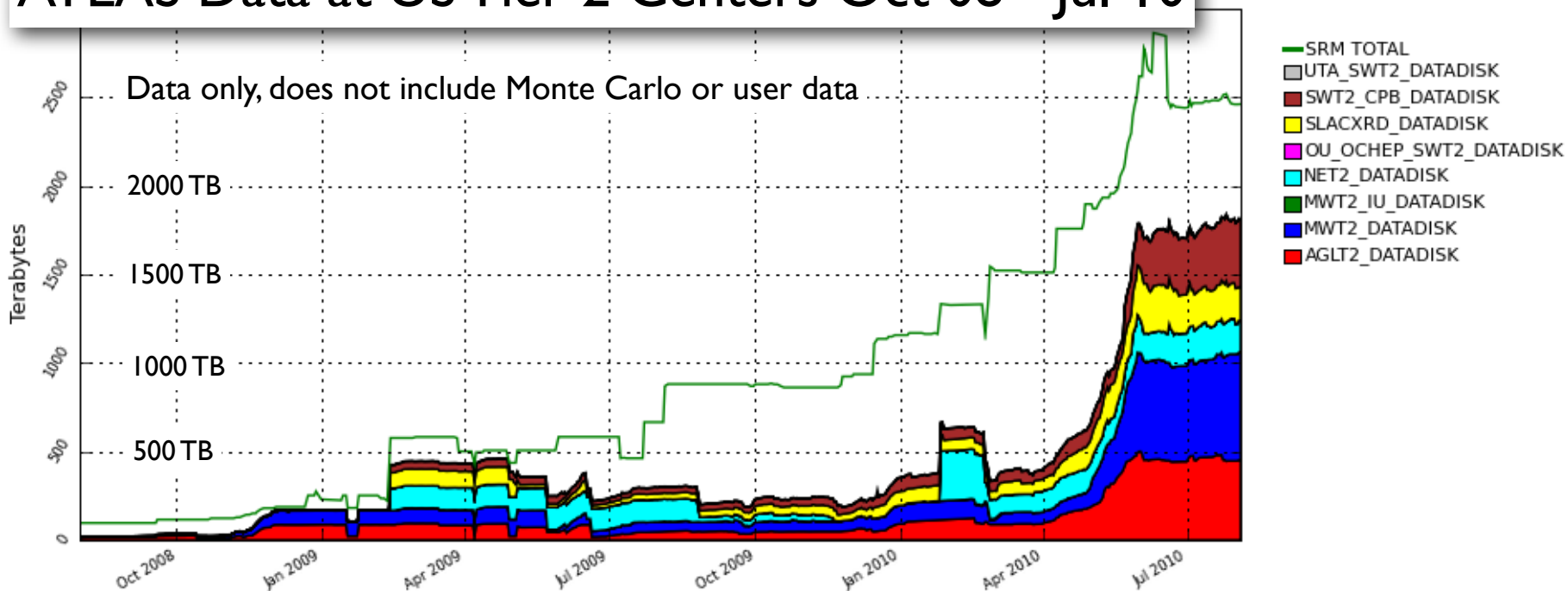
- Various storage backend technologies are used:
  - dCache (UC, IU; UM-MSU)
  - GPFS (BU, HU)
  - Xrootd (UTA, SLAC)
  - Lustre (OU)

# Installed Capacities

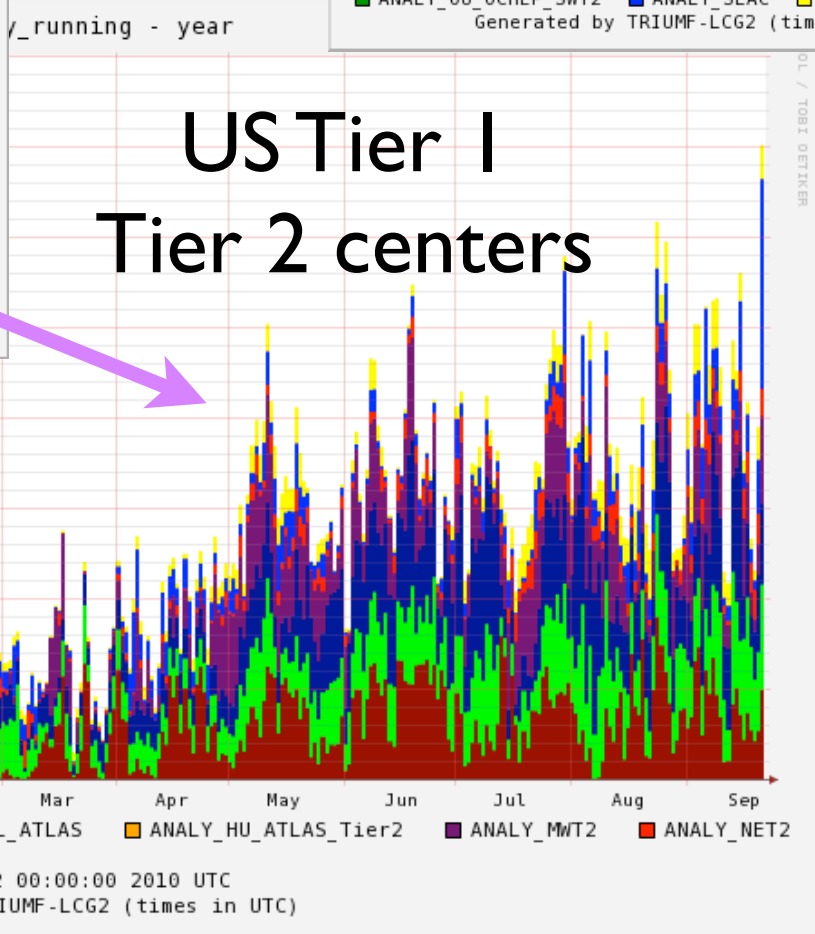
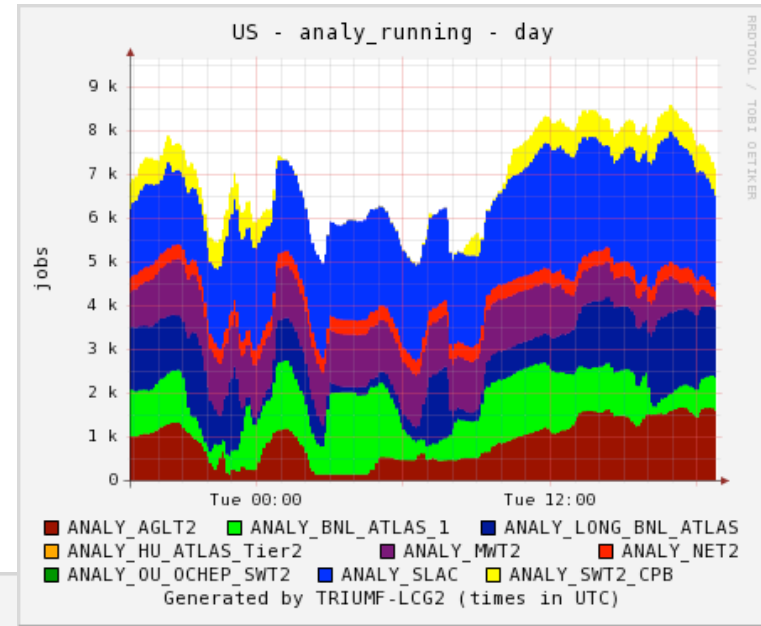
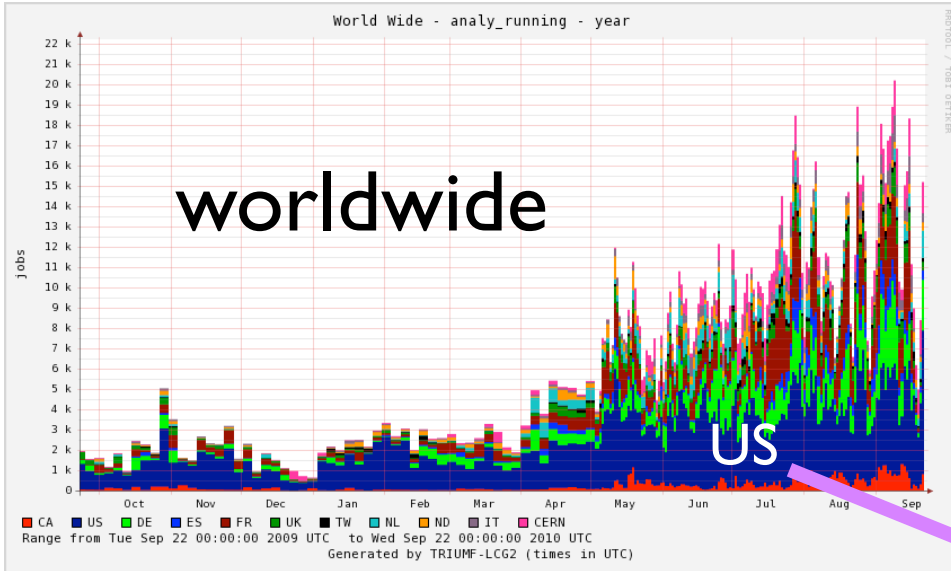
#	Site	KSI2K	HS06	TB
2.	AGLT2_SE	0	0	1,060
Total:	US-AGLT2	1,670	11,040	1,060
3.	BU_ATLAS_Tier2	1,910	5,520	550
4.	HU_ATLAS_Tier2	1,600	13,515	550
Total:	US-NET2	3,510	19,035	1,100
10.	BNL_ATLAS_SE	0	0	6,100
Total:	US-T1-BNL	14,500	58,000	6,100
12.	MWT2_IU_SE	0	0	179
14.	MWT2_UC_SE	0	0	1,140
Total:	US-MWT2	6,552	16,248	1,319
15.	OU_OCHEP_SWT2	1,389	3,189	200
16.	SWT2_CPB	1,383	4,224	821
17.	UTA_SWT2	493	3,627	39
Total:	US-SWT2	3,265	11,040	1,060
19.	WT2_SE	0	0	1,400
Total:	US-WT2	820	9,057	1,400
Total:	All US ATLAS	30,317	124,420	12,039

# Loaded up quickly

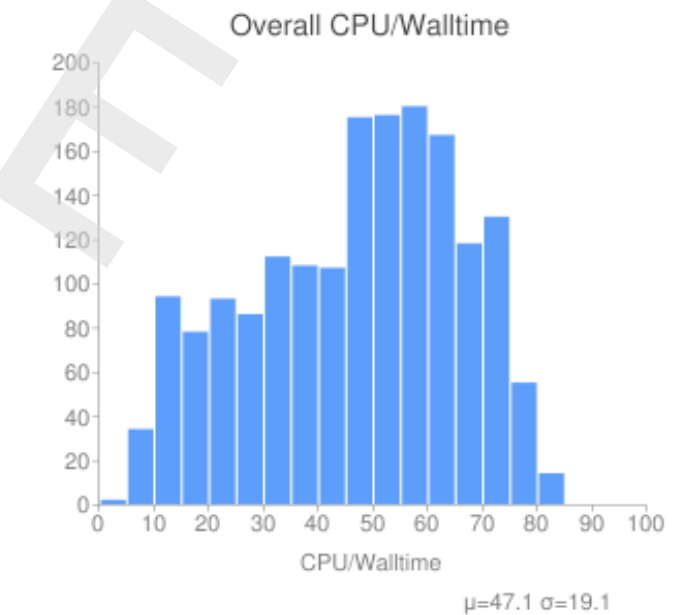
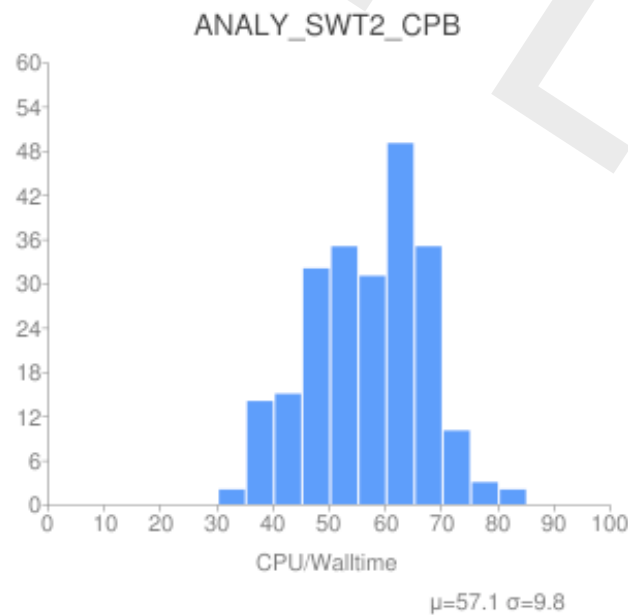
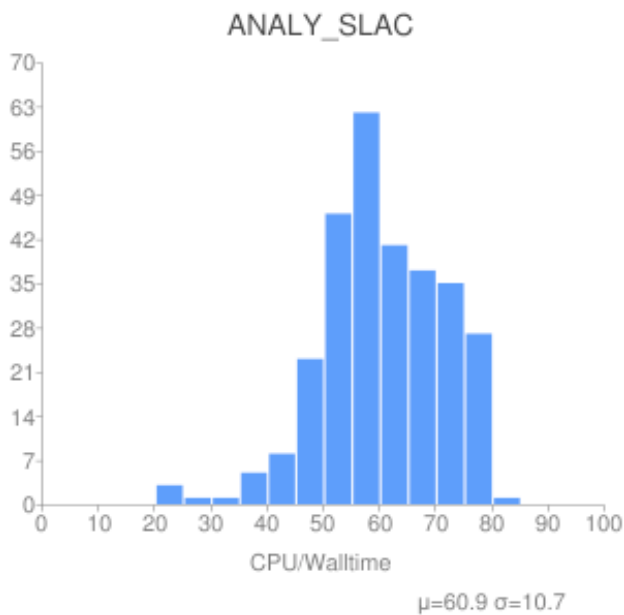
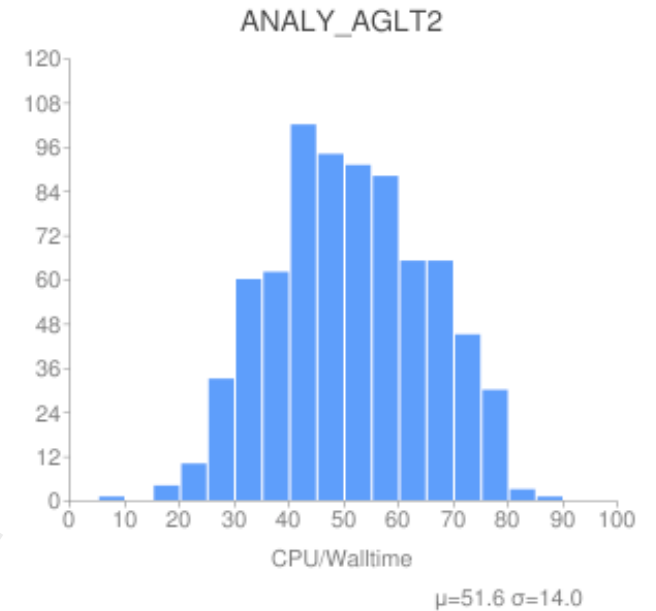
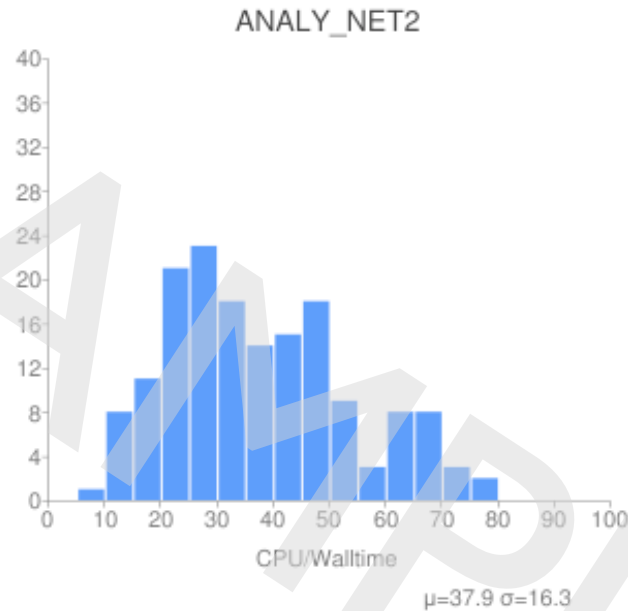
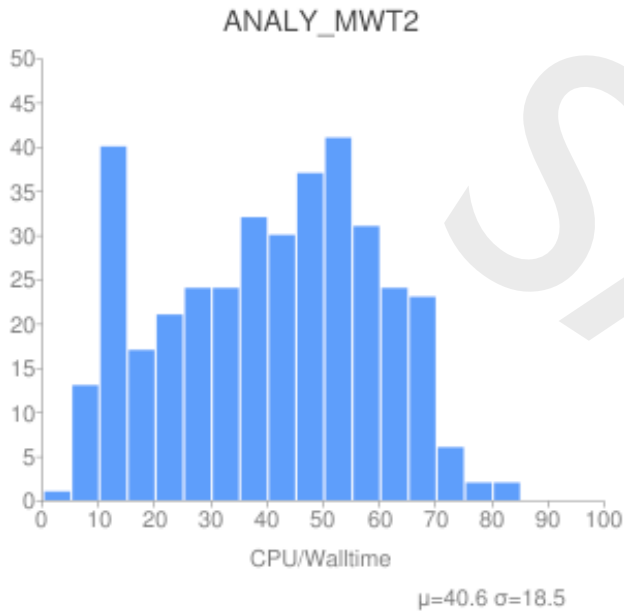
ATLAS Data at US Tier 2 Centers Oct 08 - Jul 10



# Analysis in US



# Analysis Performance



# Capacity Requirement Estimates

- Each T2:
  - '10: 1.1 PB
  - '11: 1.76-2.2 PB
  - '12: 2.0-2.6 PB
  - beyond 2012 subject to change
- high/low: pledge/add'l cap

