

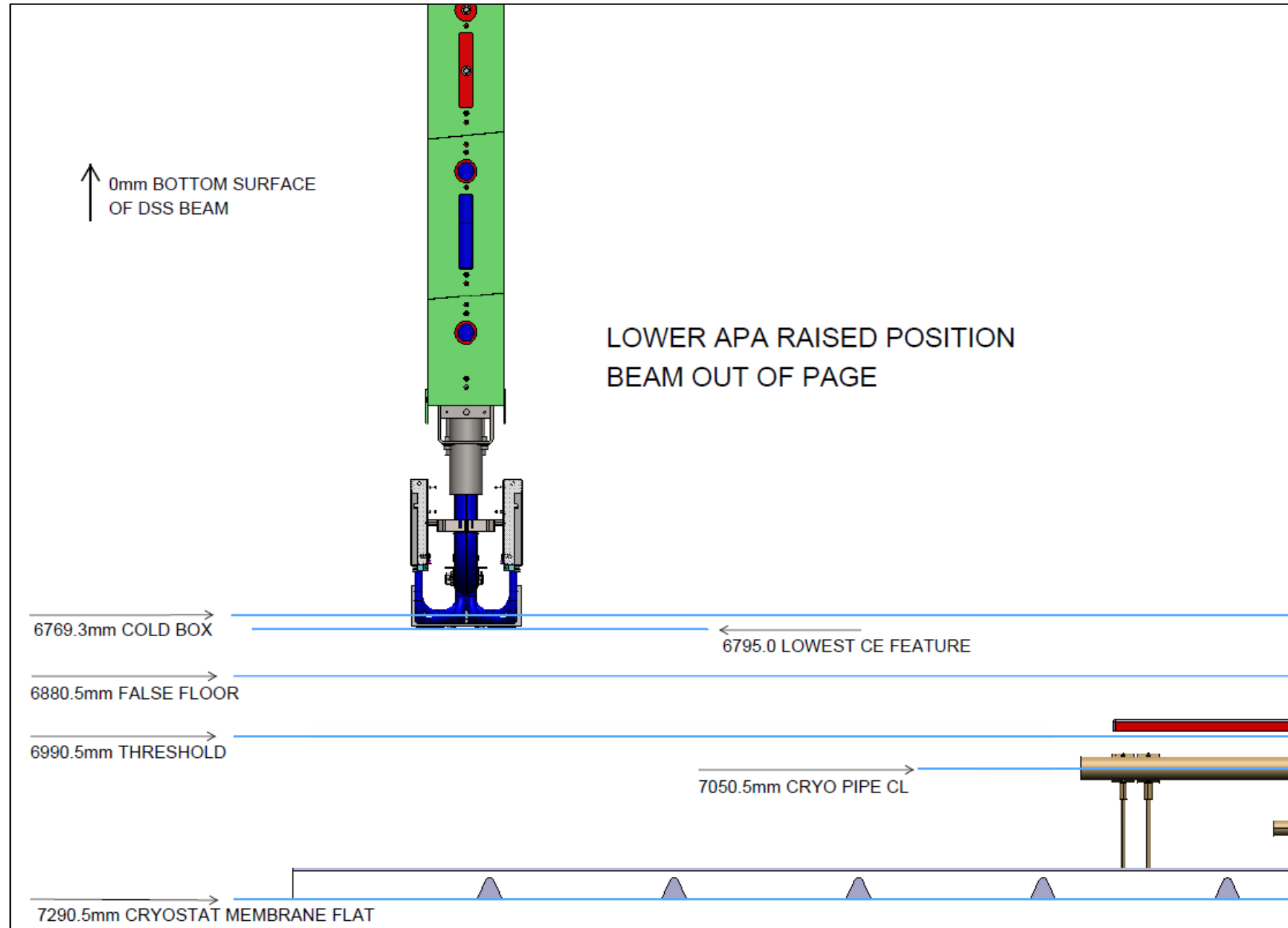
# protoDUNE II Detector, Lower APA Continued

Dan Wenman & Kyle Zeug

May 6, 2020

# protoDUNE II Lower APA Head End

- With the APA in its raised position, the interference occurs only at the cold box. The value is about 26mm (two weeks ago this value was 274mm)
- Approximate clearance to false floor is 85.5mm



# Open Items

1. The lower APAs are located on beam [right, left]
  1. Next two slides
2. protoDUNE II drift distance is equal to DUNE drift distance
  1. 63mm less than original protoDUNE
  2. Maintain CPA beam position
  3. Move beam left and beam right toward the CPA beam
  4. Suspected to be uncontroversial but should confirm
3. TPC Electronics DUNE cross on top of the cryostat
  1. Allows for two APAs worth of cables to exit the cryostat at the same penetration
  2. May not be critical but we (Kyle, Manhong, Dave, etc) should move along the cabling plan for protoDUNE II
4. Other items for a future meeting like this?

# Lower APA Position wrt Beam (Beam Out of Page)

0mm BOTTOM SURFACE DSS BEAM

6769.3mm COLD BOX

6880.5mm FALSE FLOOR

6990.5mm THRESHOLD

7043.4mm LOWEST CE FEATURE

7290.5mm CRYOSTAT MEMBRANE FLAT

# Lower APA Position wrt Beam (Beam Into Page)

