
STUDY OF ARAPUCA 'S RESPONSE DURING XE DOPING

STEFANIA, FRANCESCO, SERHAN, UMUT

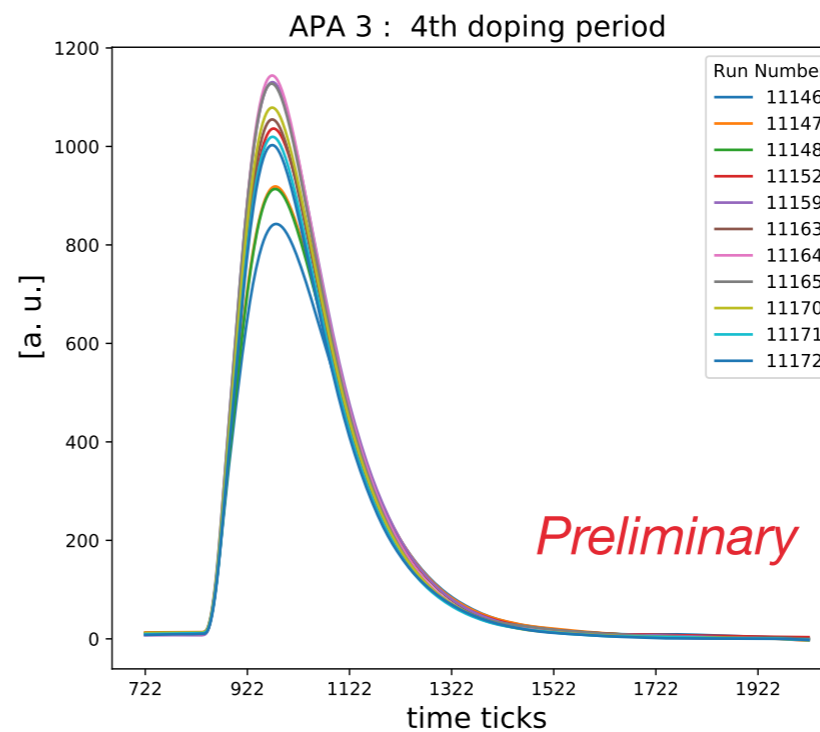
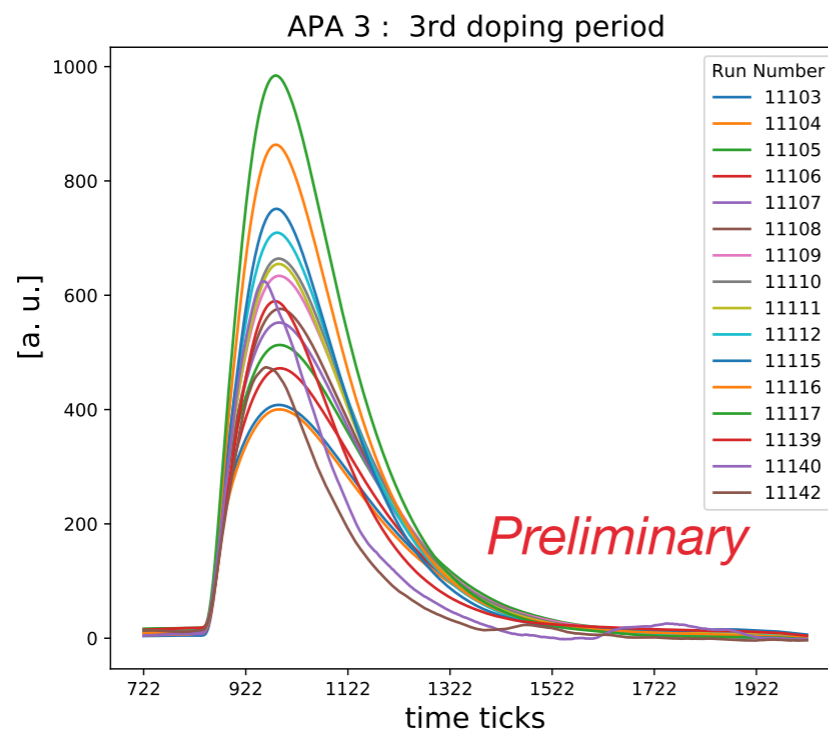
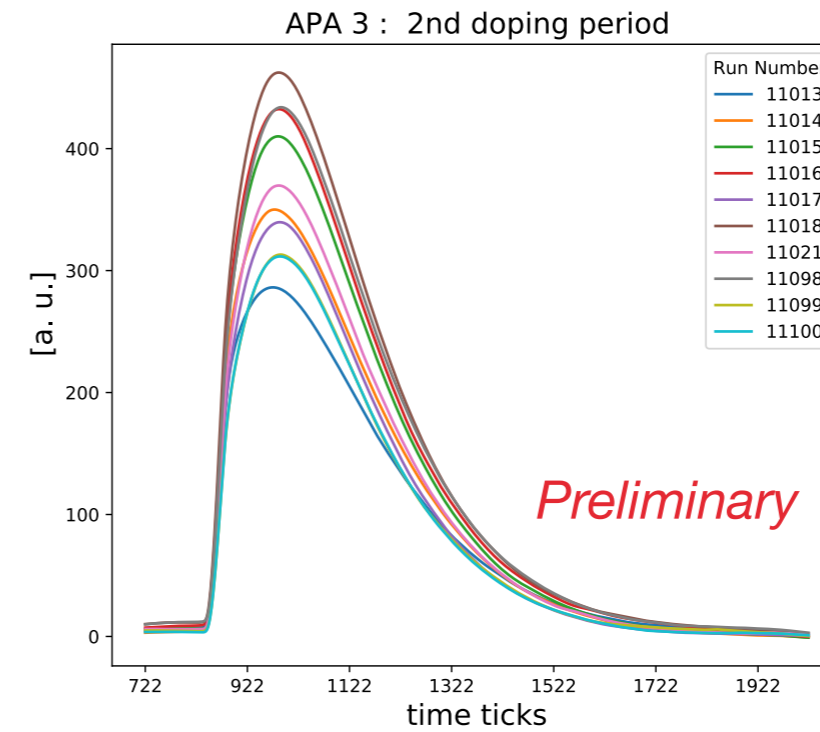
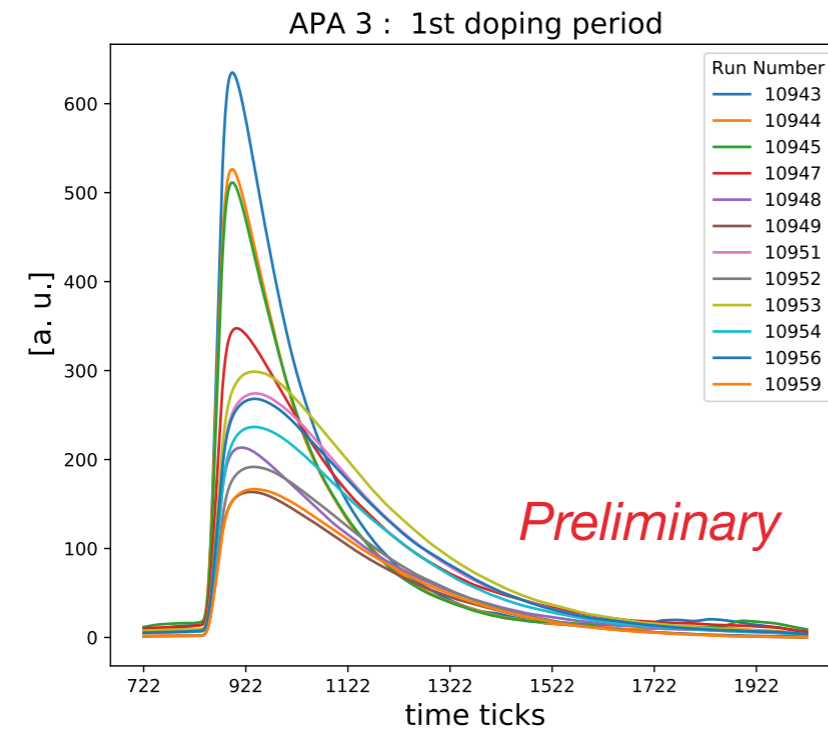
INTRO

- ▶ Study the ARAPUCA's response during Xe doping and comparison wrt to X-Arapuca sensors
- ▶ Study of the average waveforms for both APA3 and APA6 Arapucas.
- ▶ Per each run:
 - noise removal, pedestal subtraction
 - simple event selection (no empty or saturated events)
 - computing average waveform per channel
 - calibration using single p.e mean area extracted in the given run
 - good wf selection signal above threshold ($3 \cdot \text{spe height}$)
 - sum of the 12 channels to compute the final average waveform and integral

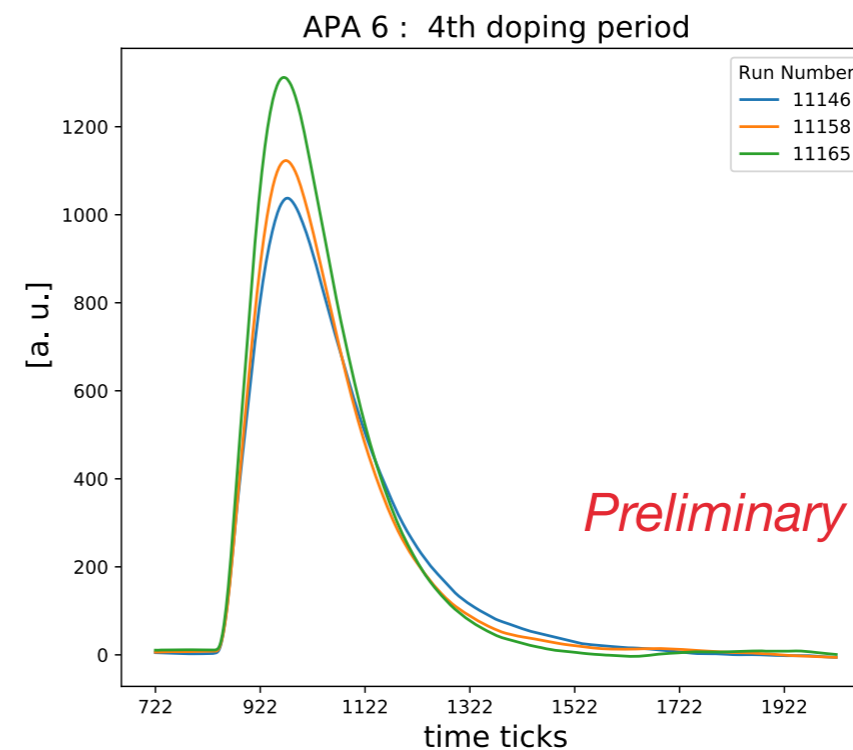
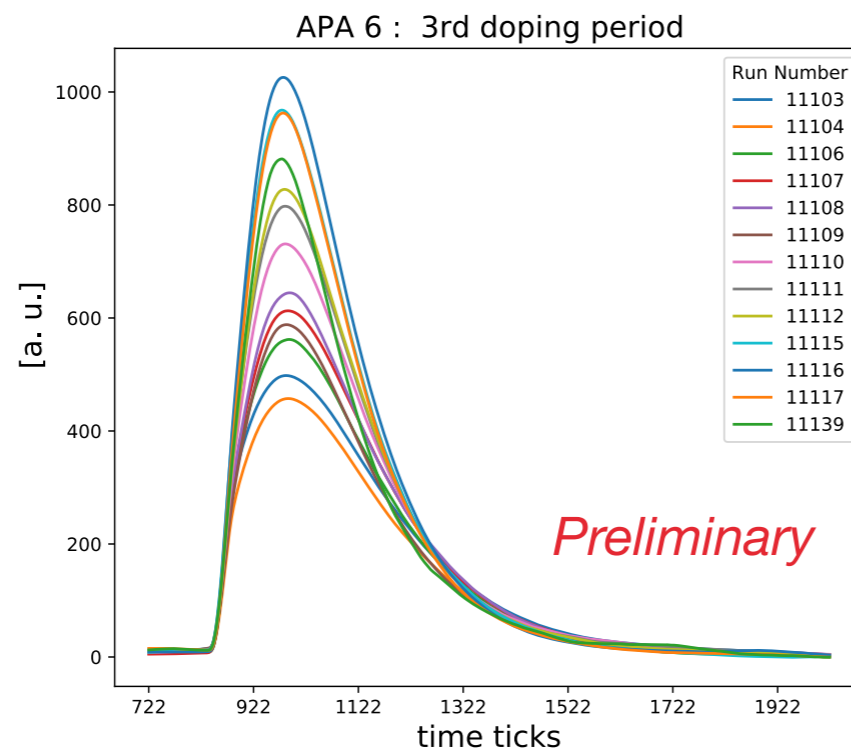
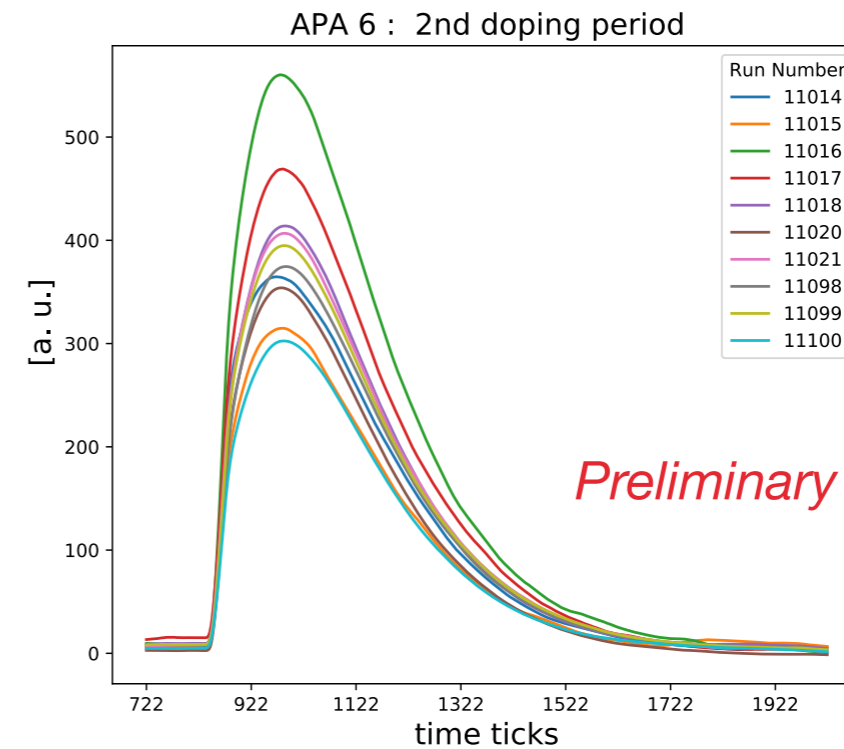
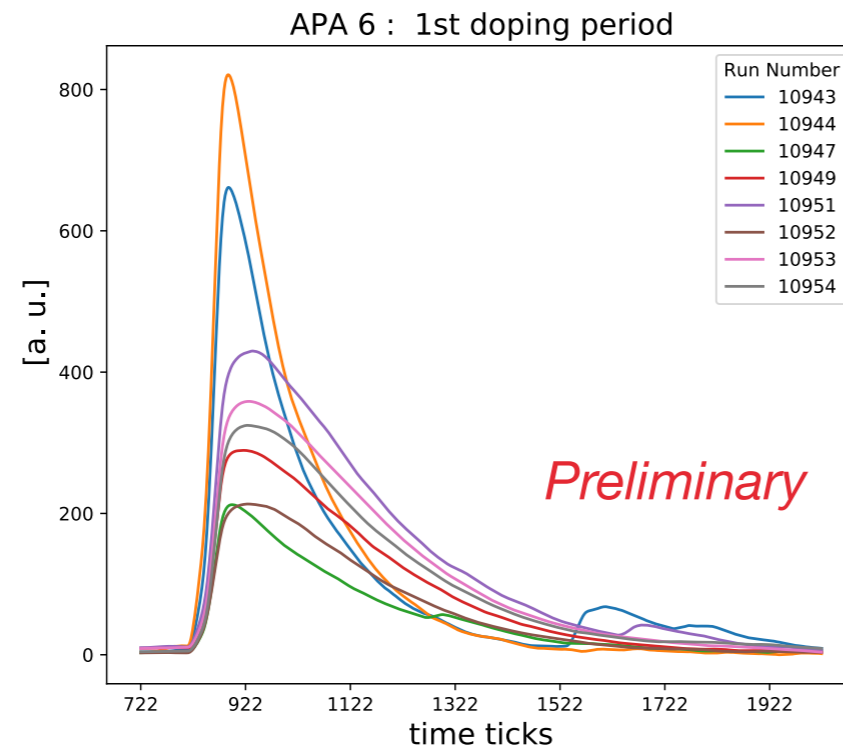
INTRO

- ▶ Analysis performed over the set of runs taken with CRT trigger ([Run list](#))
- ▶ Only 0 Field runs have been considered so far
- ▶ Remarque: very different statistics available for APA6 and APA3. Current CRT trigger configuration favour beam side
- ▶ Fluctuations among run of the same period can be observed and are being investigated

APA 3 : AVERAGE WAVEFORMS

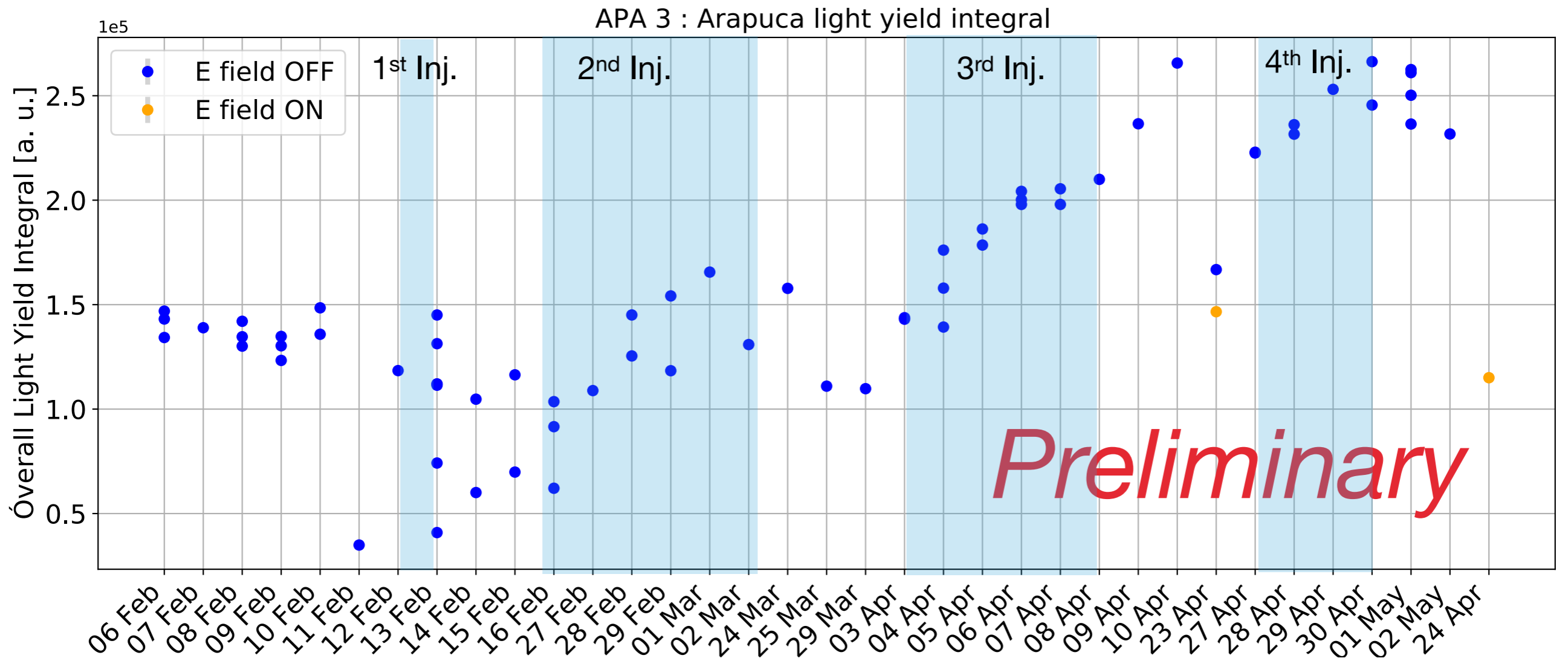


APA 6 : AVERAGE WAVEFORMS

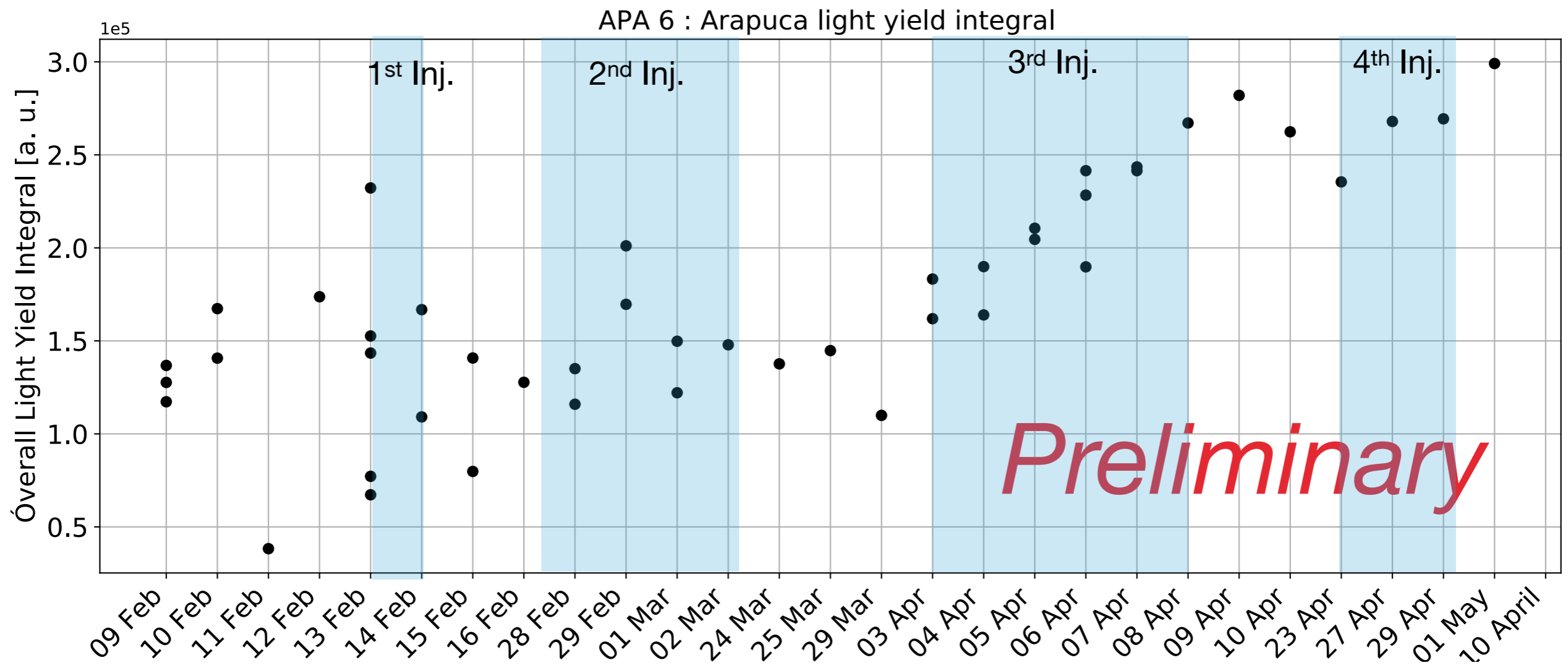


APA 3: AVERAGE WF INTEGRAL VS TIME

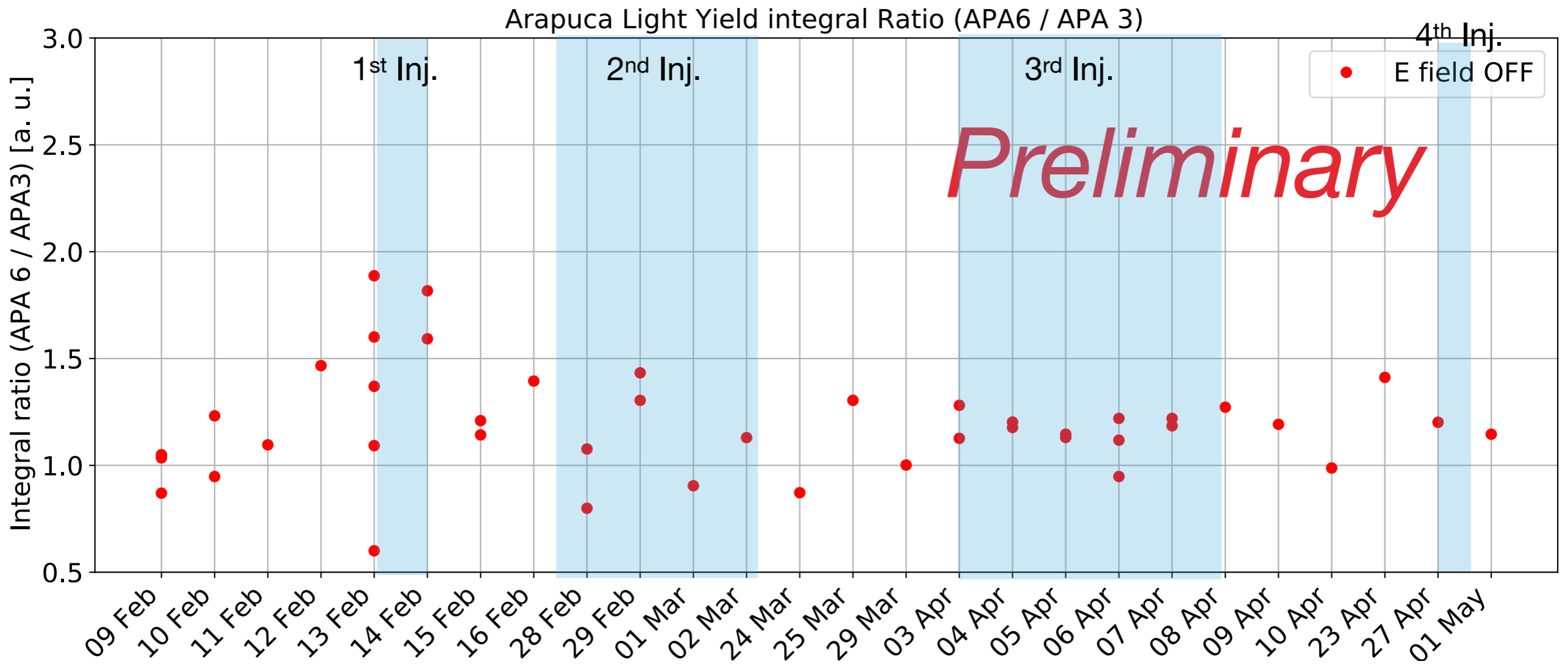
Injection period



APA 6: AVERAGE WF INTEGRAL VS TIME

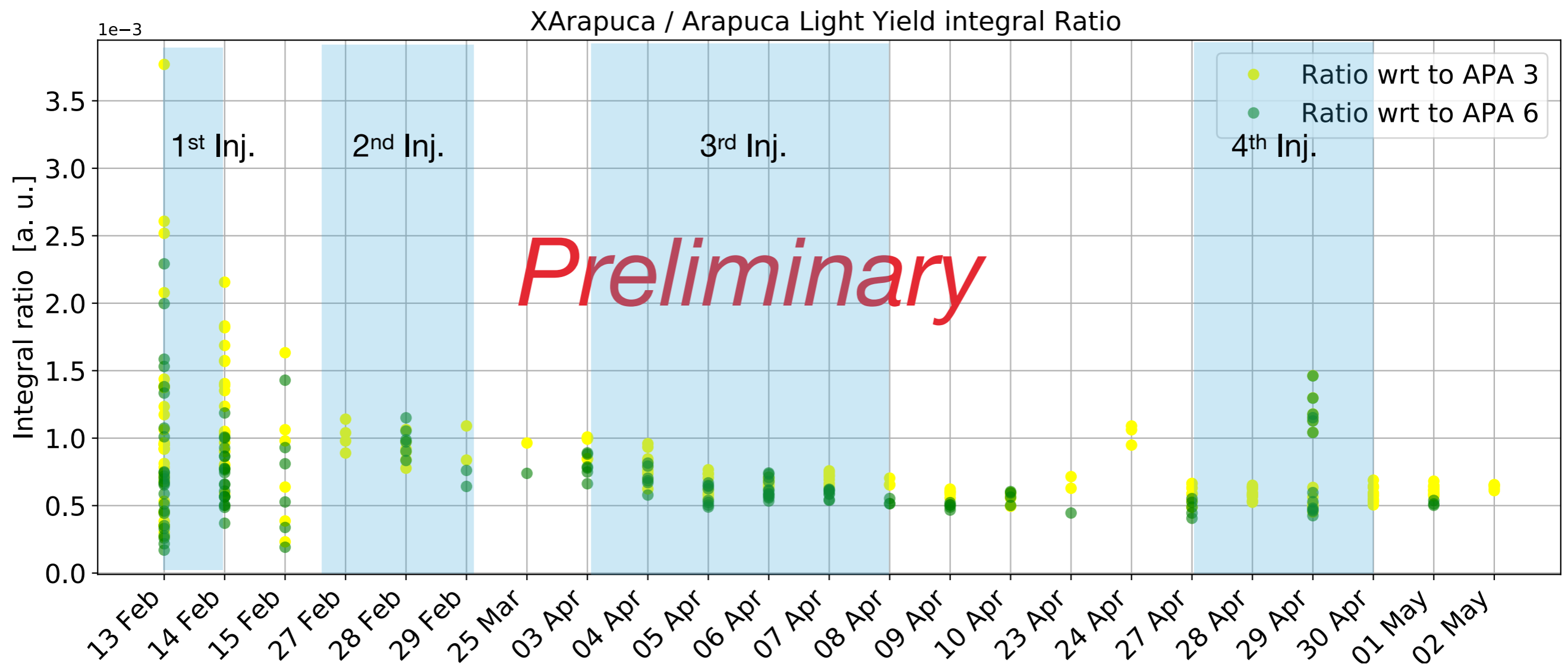


AVERAGE WF INTEGRAL RATIO : APA 6 / APA 3



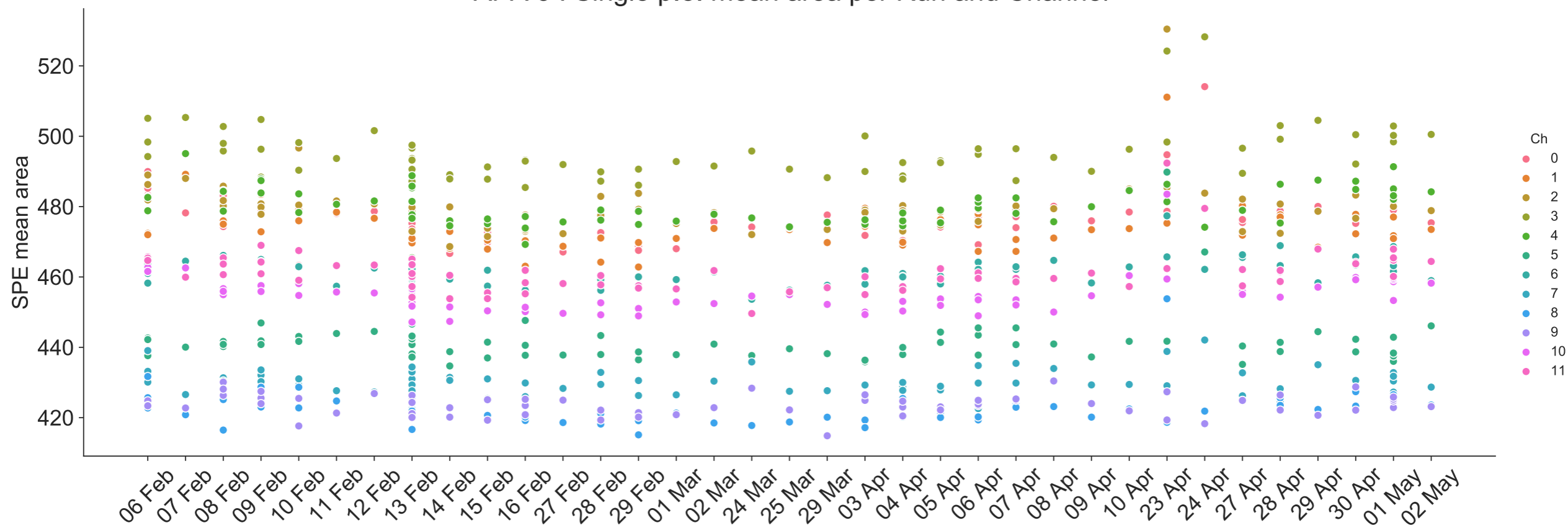
AVERAGE WF INTEGRAL RATIO : XARAPUCA / ARAPUCA

- ▶ X-Arapuca light integrals taken from [Umut's studies](#)
- ▶ Bare ratio! No calibration between X-Arapuca (NQ) and Arapuca are done so far
- ▶ Several points per day reflecting the number of runs taken. Work ongoing to have a unique combination between X-Arapuca (NQ) and Arapuca

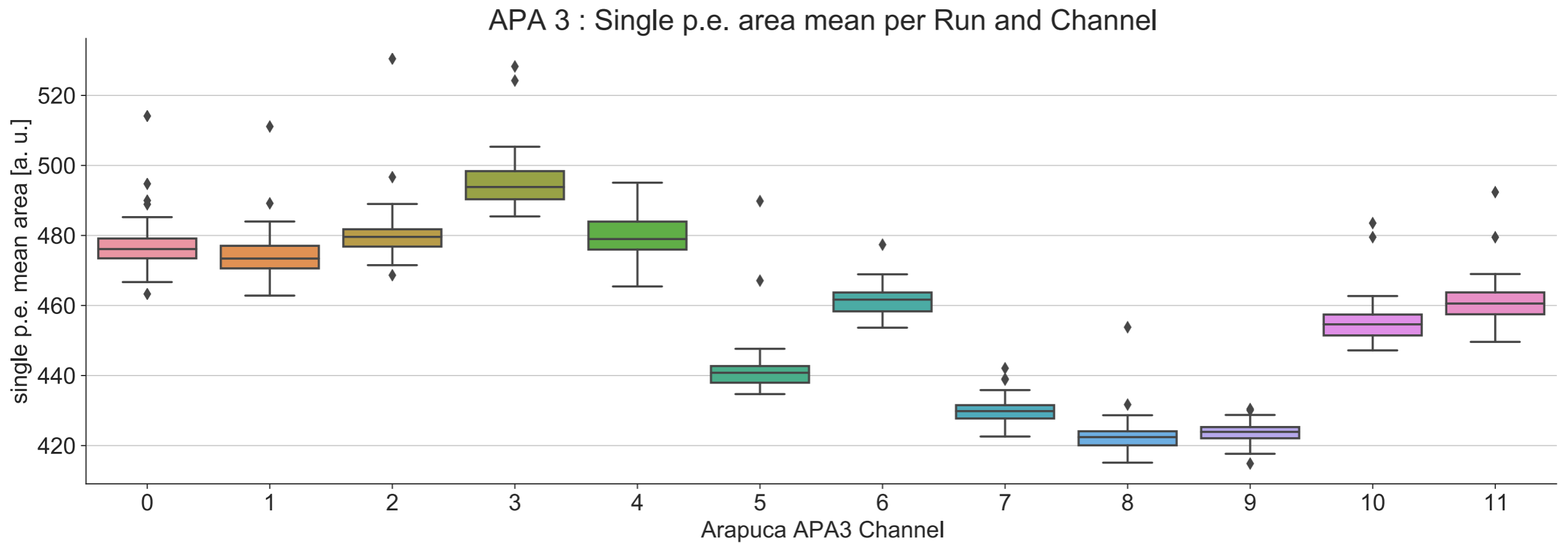
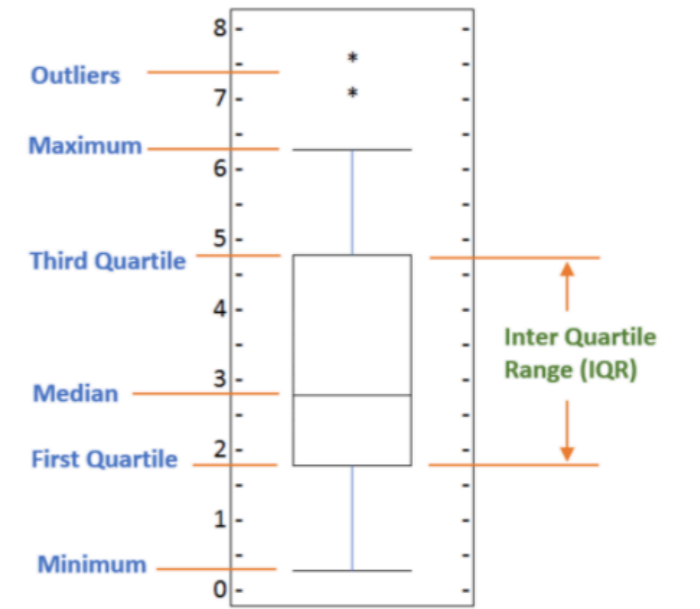


APA 3: SINGLE P.E. STUDIES

APA 3 : Single p.e. mean area per Run and Channel

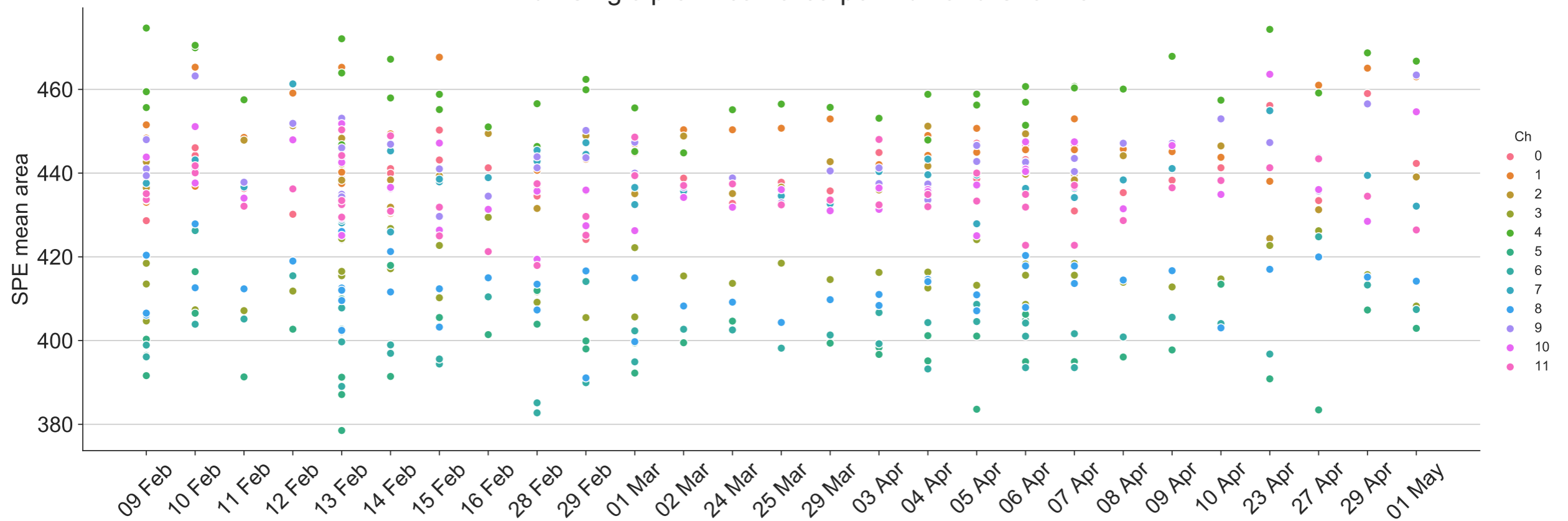


APA 3: SINGLE P.E. STUDIES

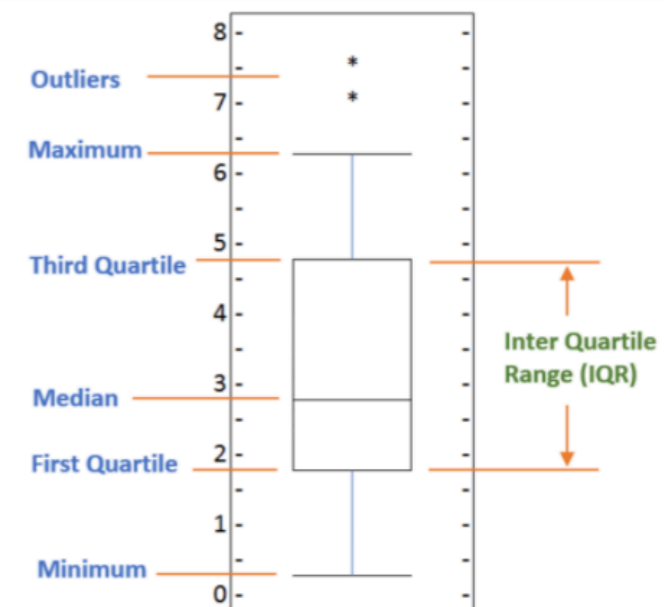


APA 6: SINGLE P.E. STUDIES

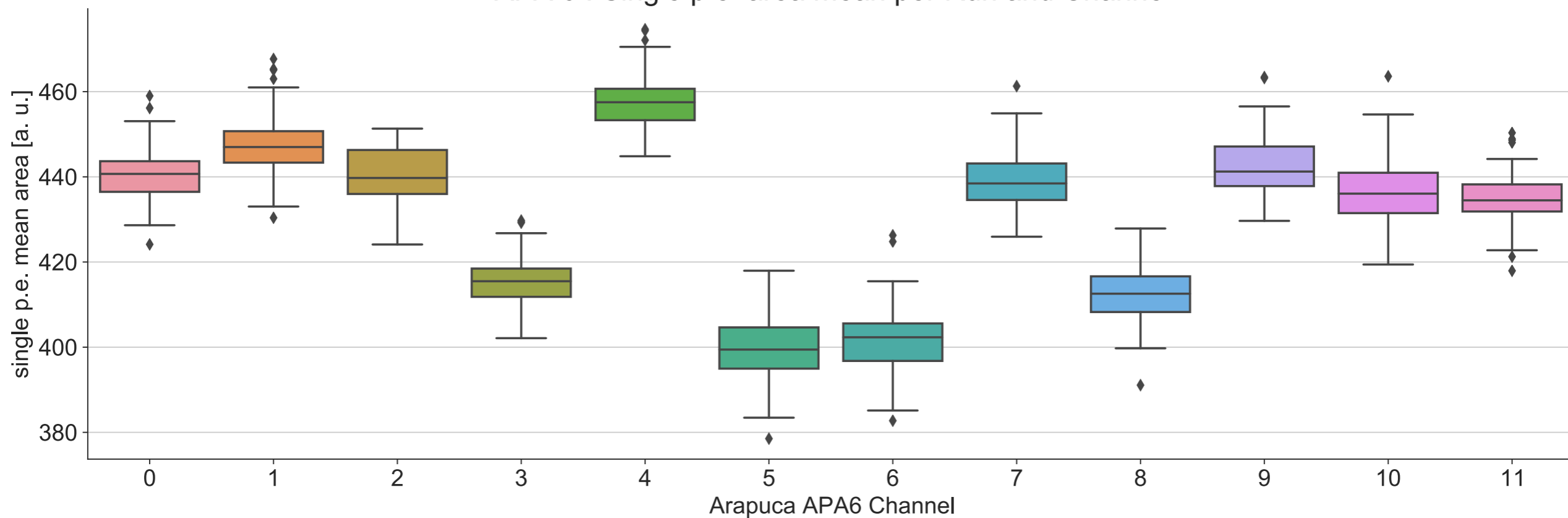
APA 6 : Single p.e. mean area per Run and Channel



APA 6: SINGLE P.E. STUDIES



APA 6 : Single p.e. area mean per Run and Channel

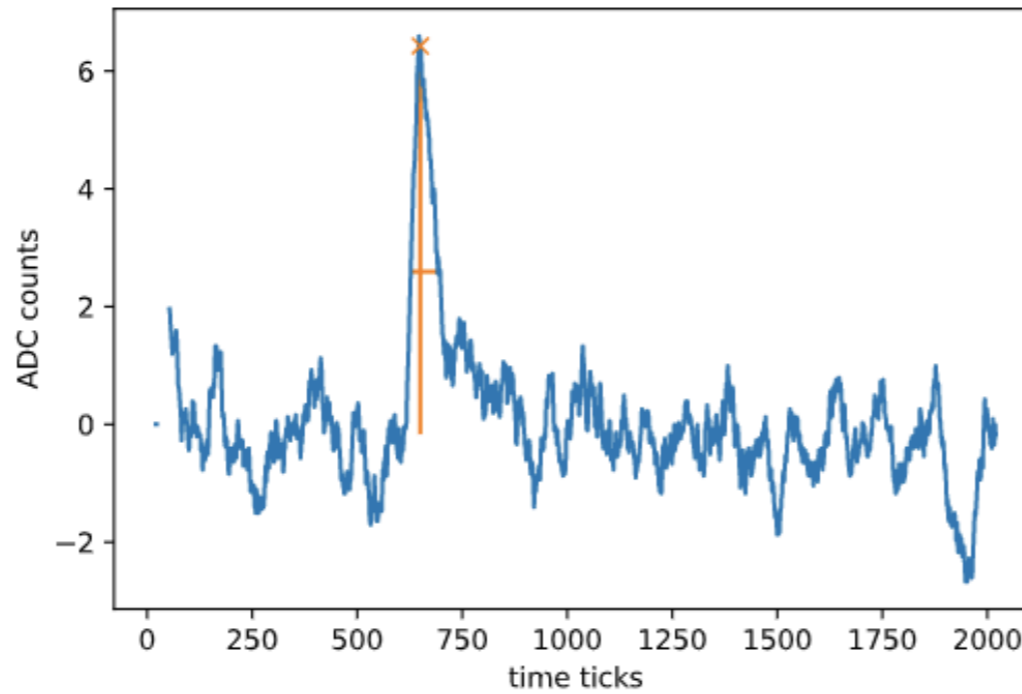


SUMMARY

- ▶ Overview of the Arapuca's response during Xe doping
- ▶ Similar light seen by the two TPC sides
- ▶ Stable response wrt to the X-Arapuca (NQ)
- ▶ To do: closer look to some runs to understand fluctuation of the integral (analysis?)

ADDITIONAL

SOME DETAILS ABOUT THE SINGLE P.E. SELECTION



Example of single p.e.

Ch 5 , run 11099

