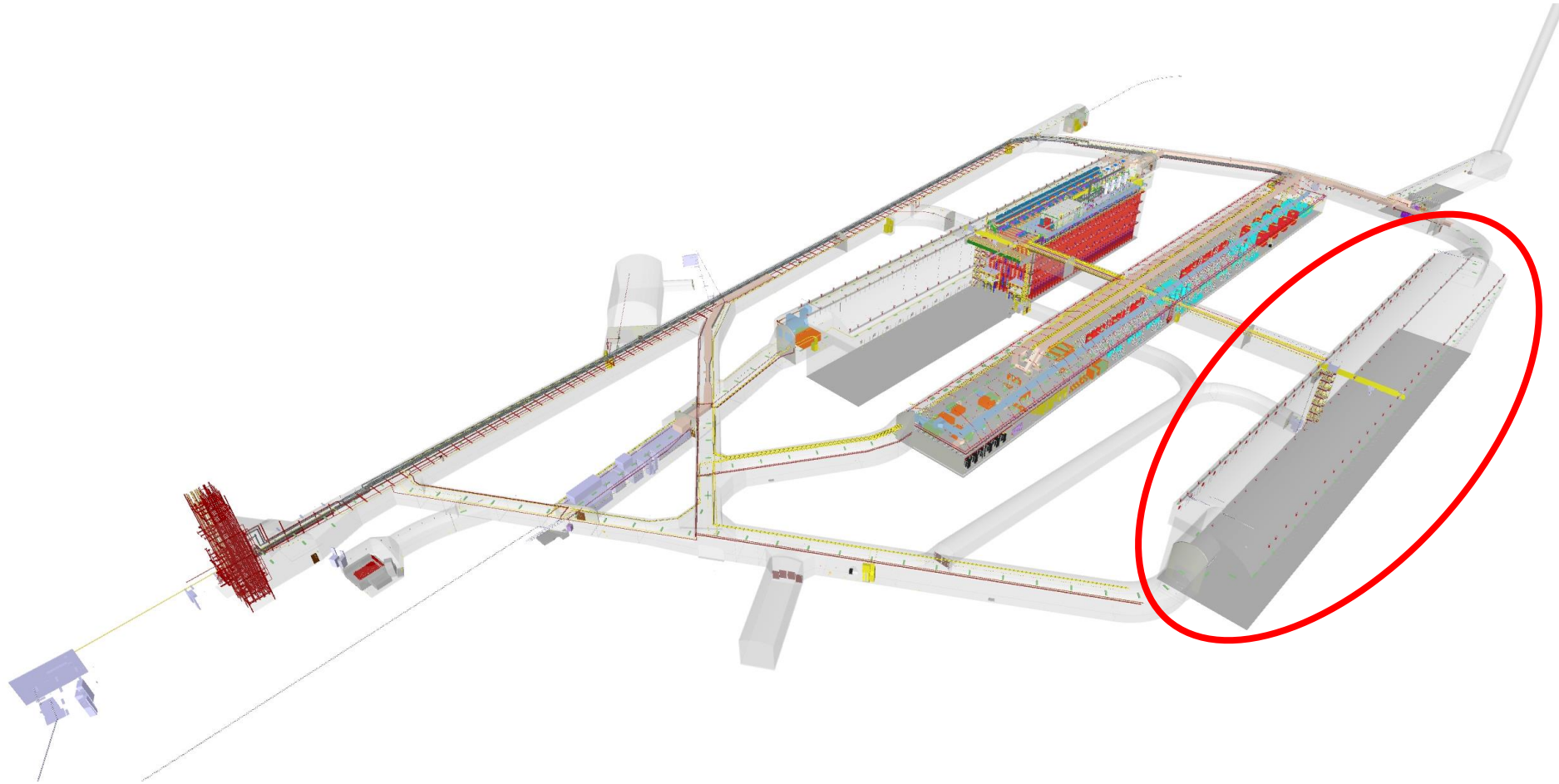


Model Changes V6

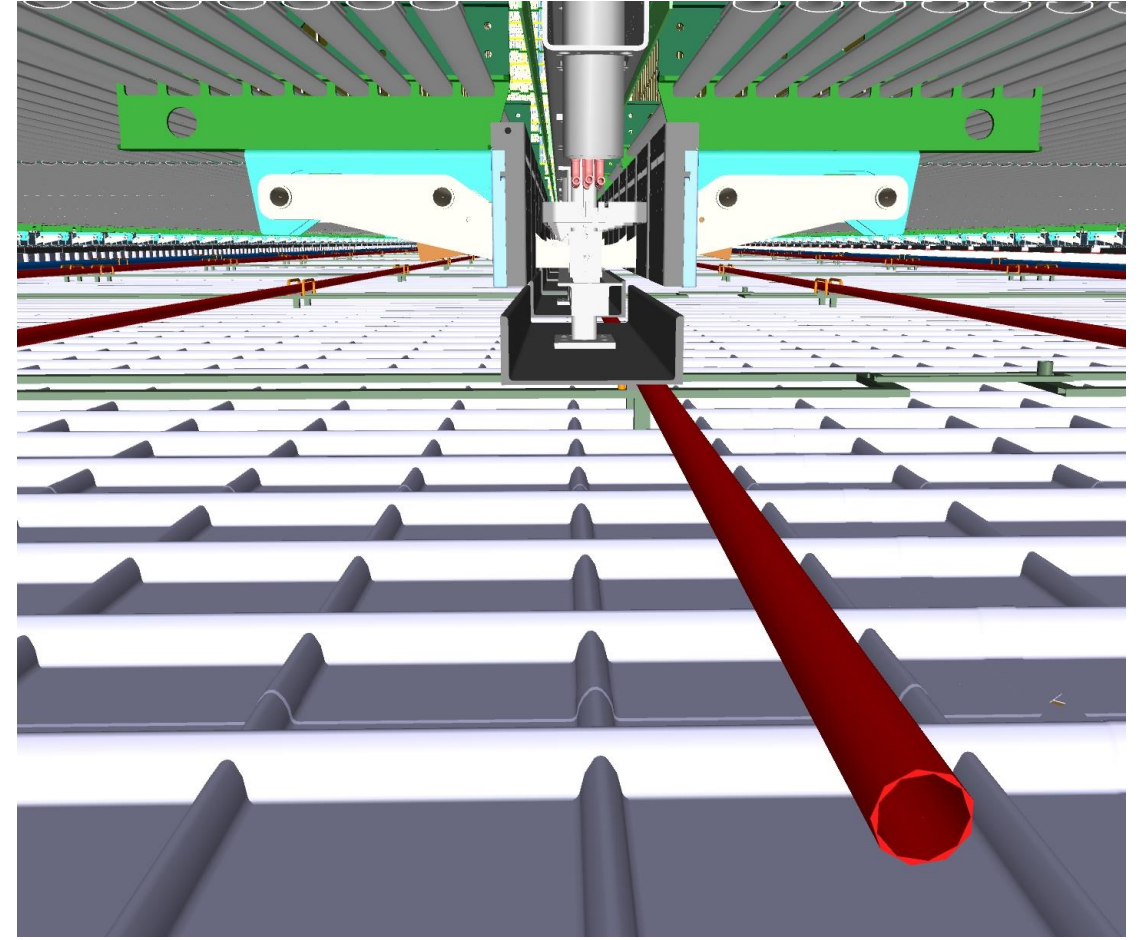
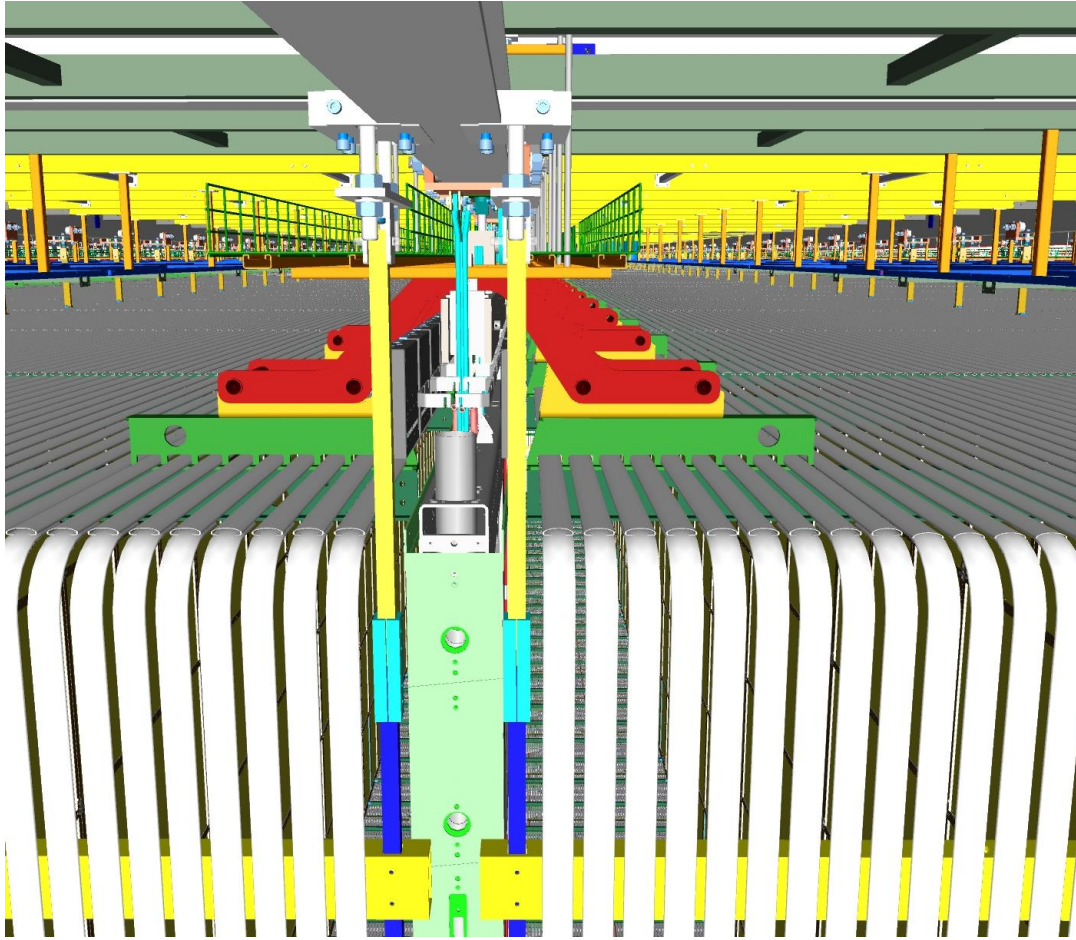
File location

- Change report located <https://edms.cern.ch/document/2059874/1>
- Models are located <https://edms.cern.ch/project/CERN-0000194644>

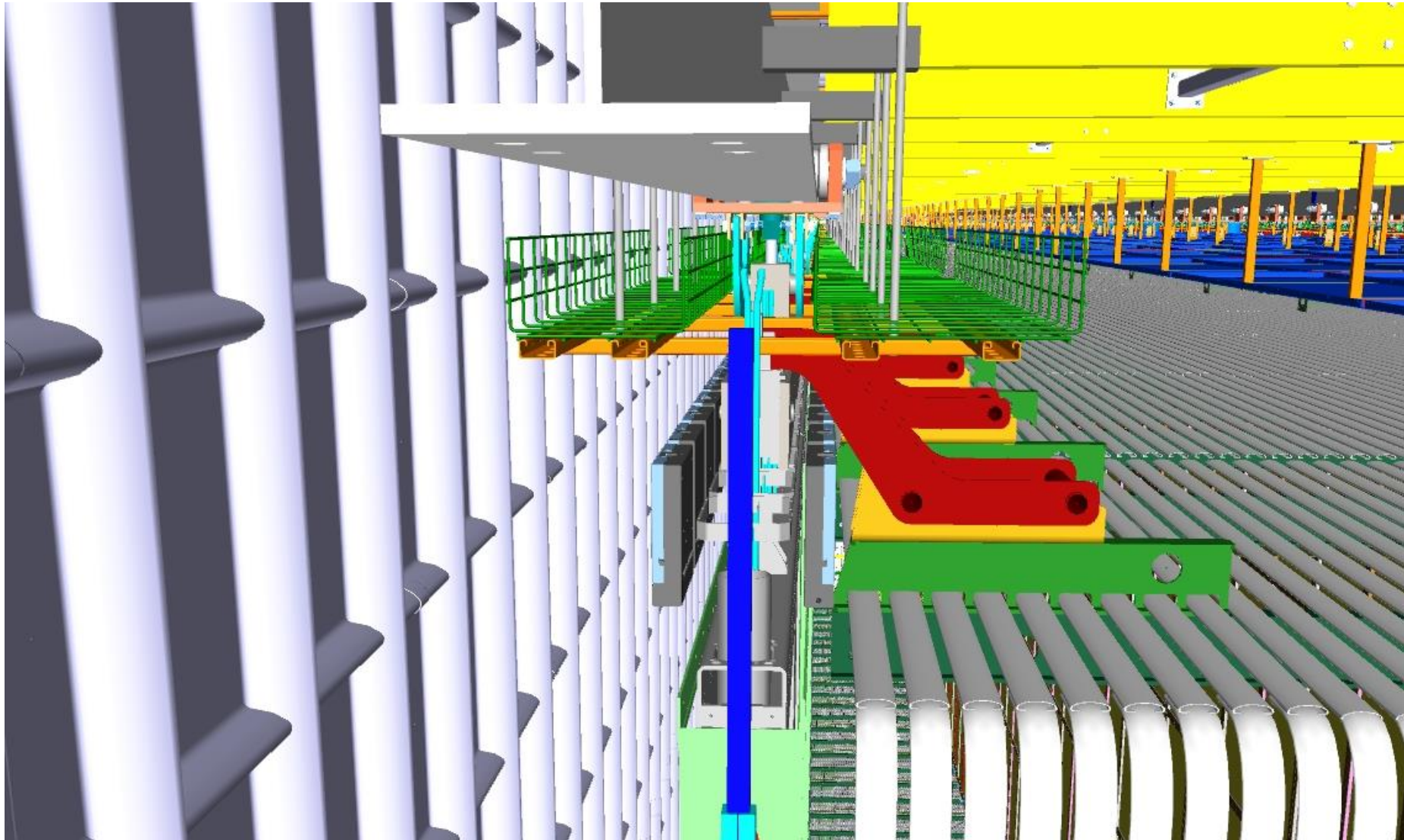
Removal of South cavern detectors and infrastructure



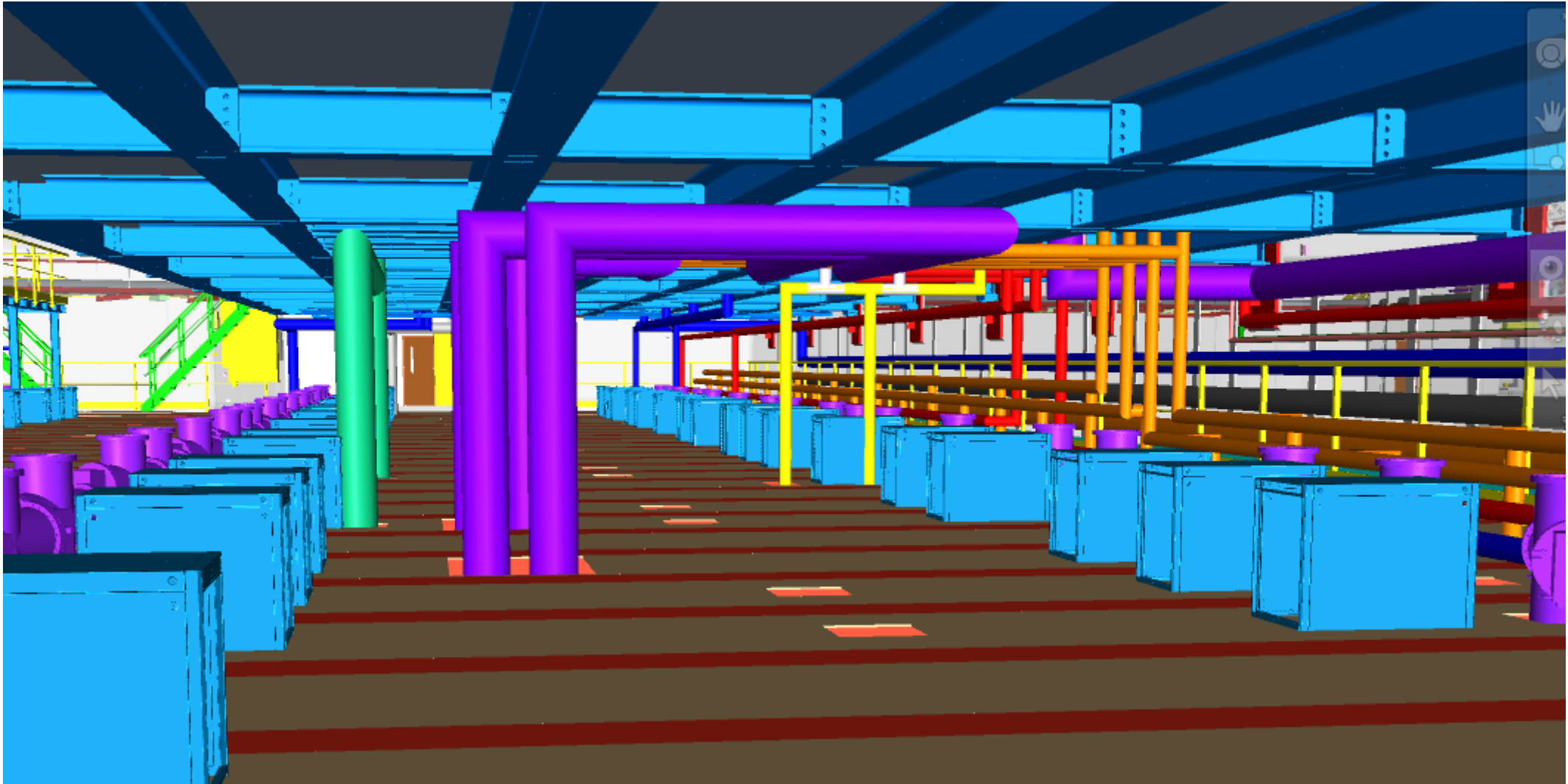
Upper and lower FC/APA latches



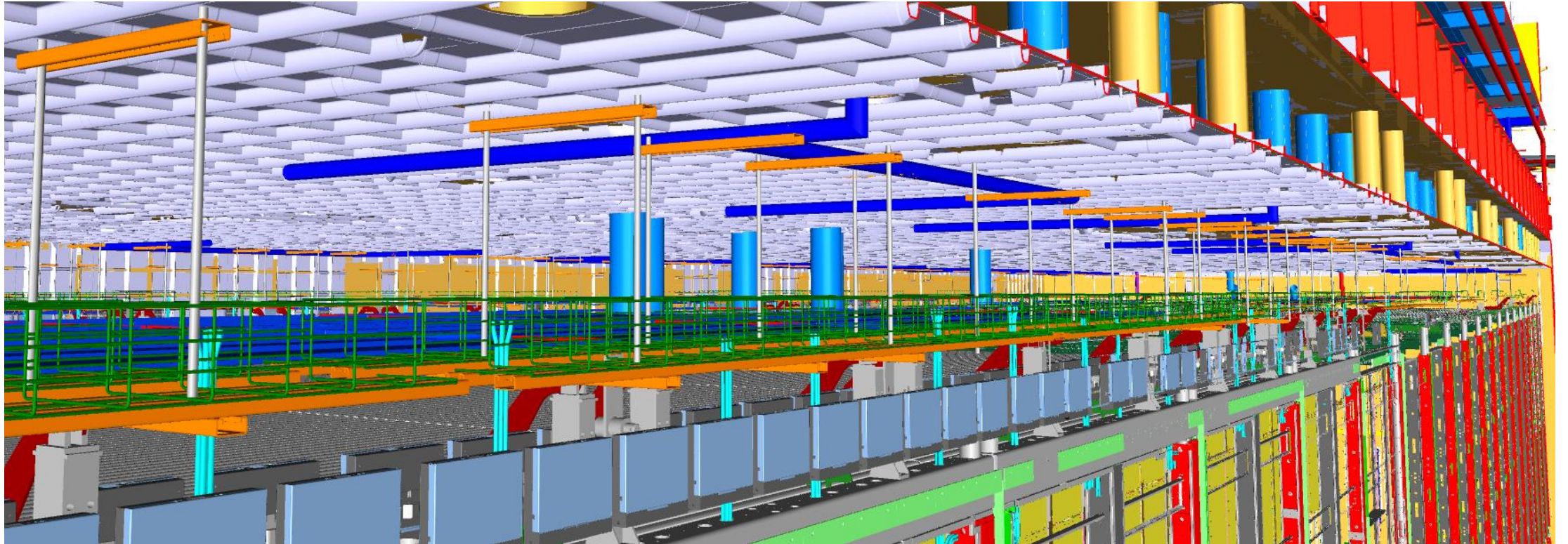
CE cable trays are asymmetric and APA conduits



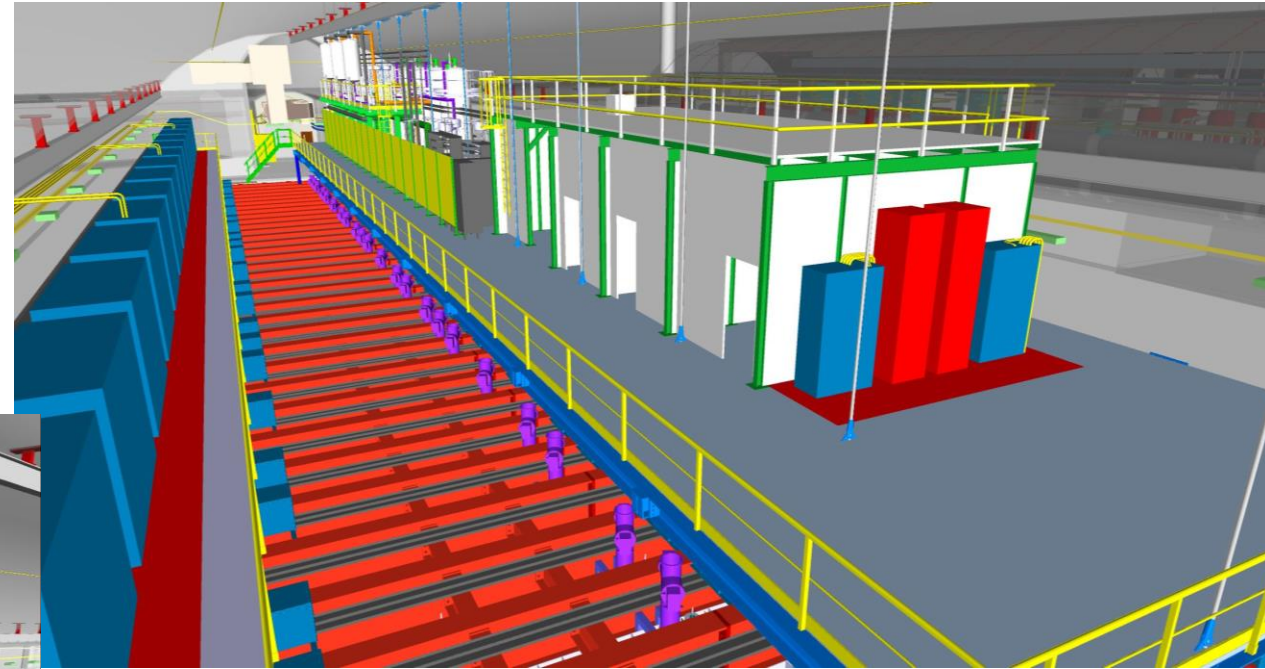
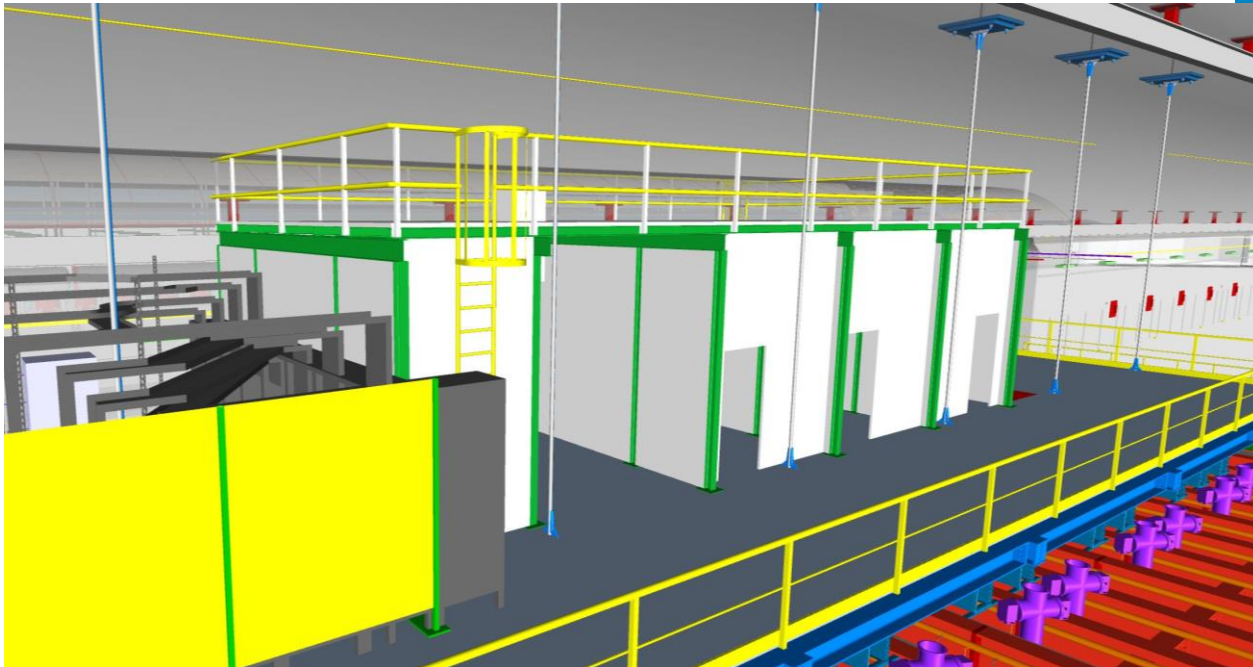
Update pipe sizes and routing to eliminate conflicts of cryogenic piping under the mezzanine



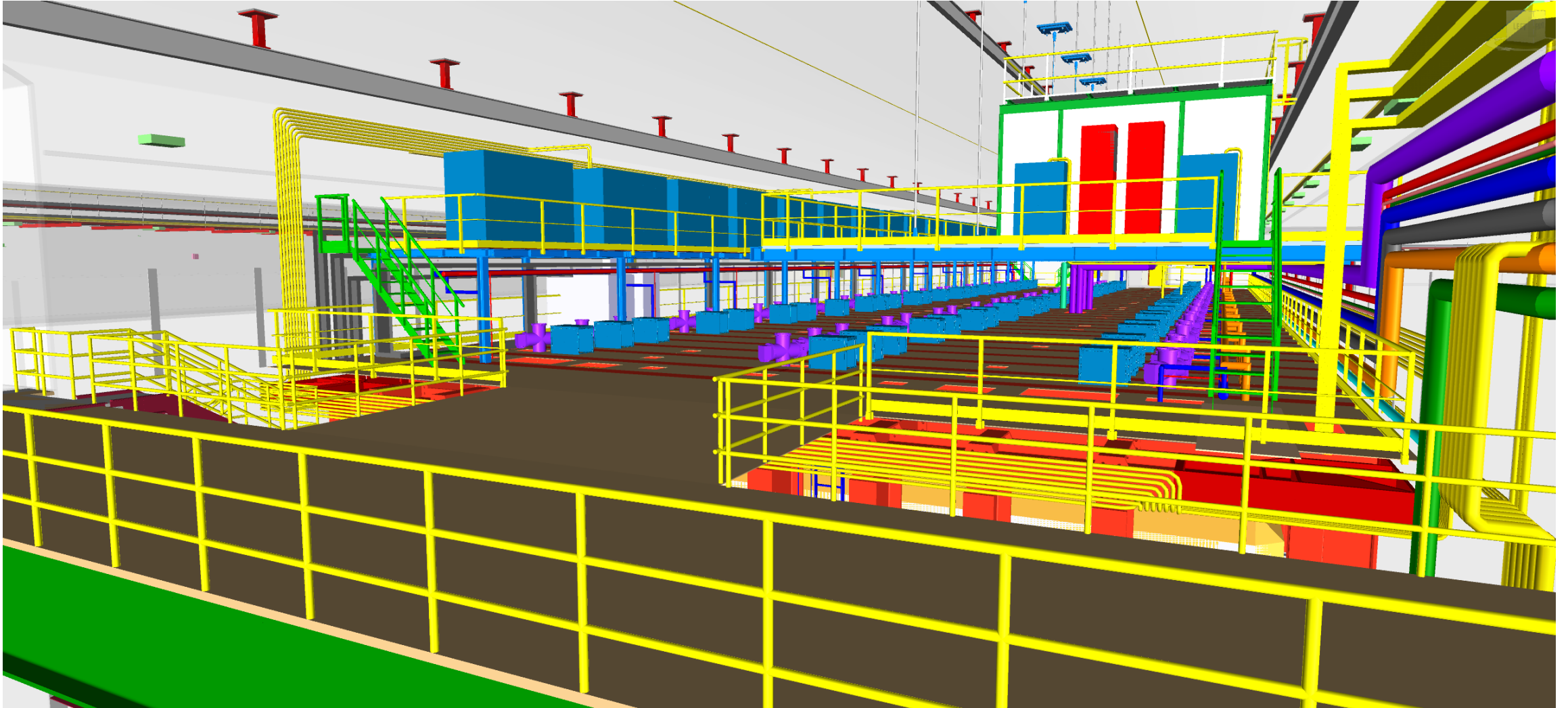
Updated internal cryogenic cooldown piping to avoid the detector



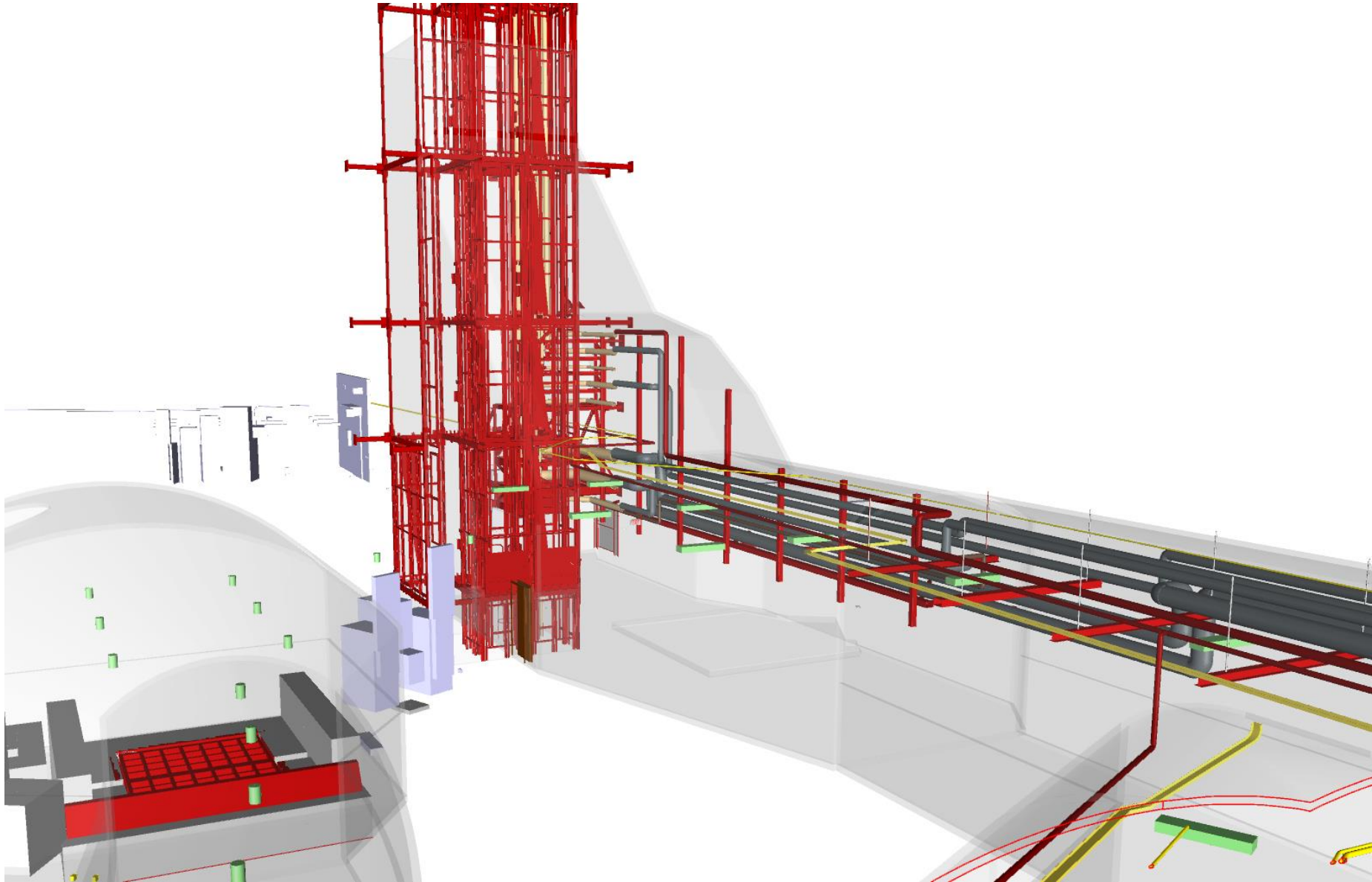
New barracks on the cryogenic mezzanine to accommodate
DAQ move from CUC



Additional platforms and railings for safe access



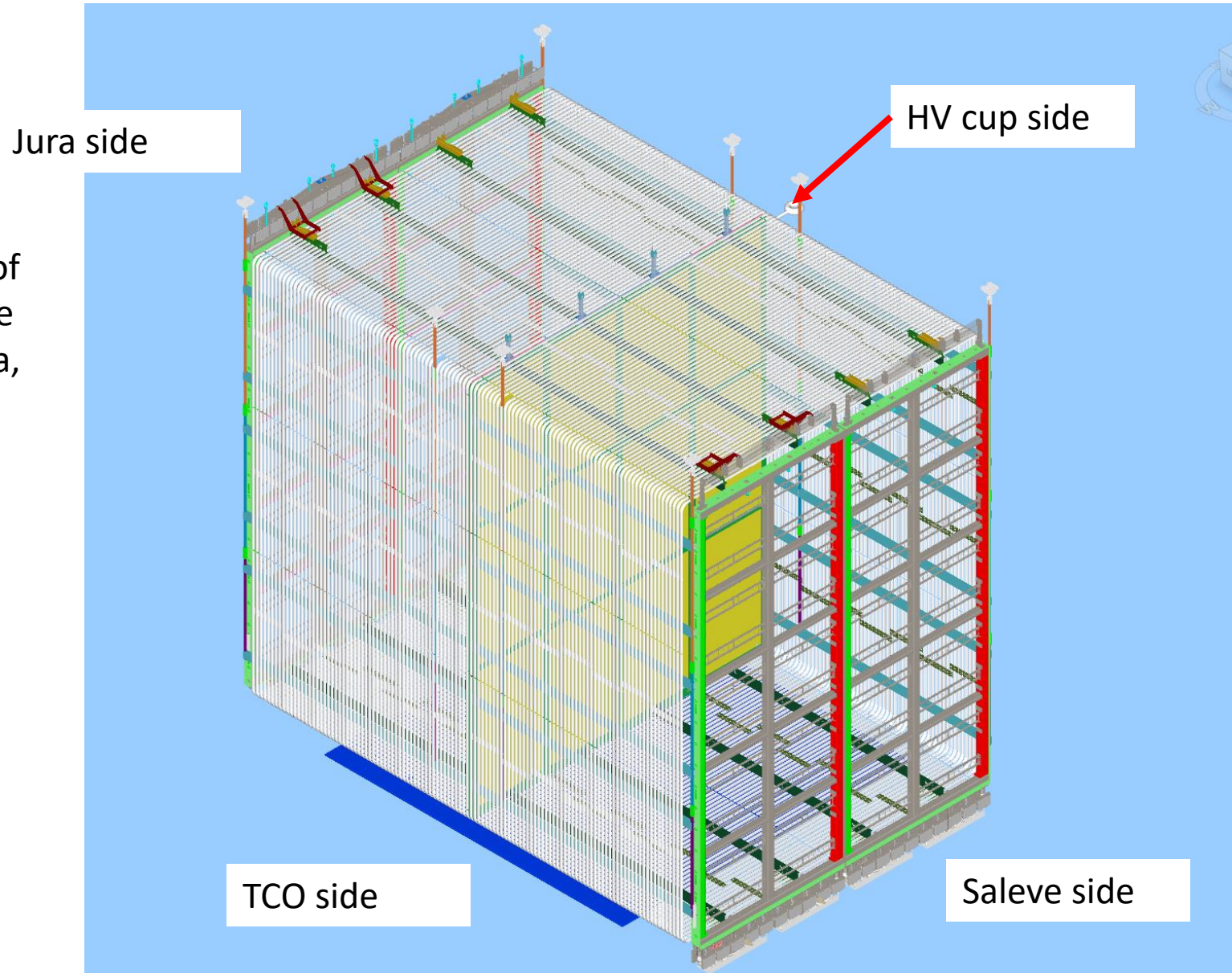
Added steel sets in Ross shaft and cryogenic piping



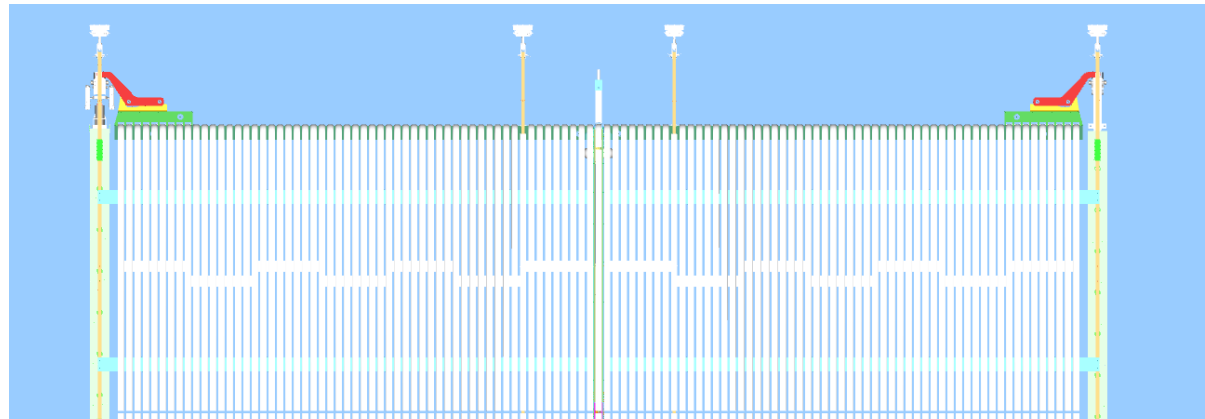
ProtoDUNE II model

Current protodune II model

Orients the sides of the detector to the sides in EHN1, Jura, Saleve, and TCO sides



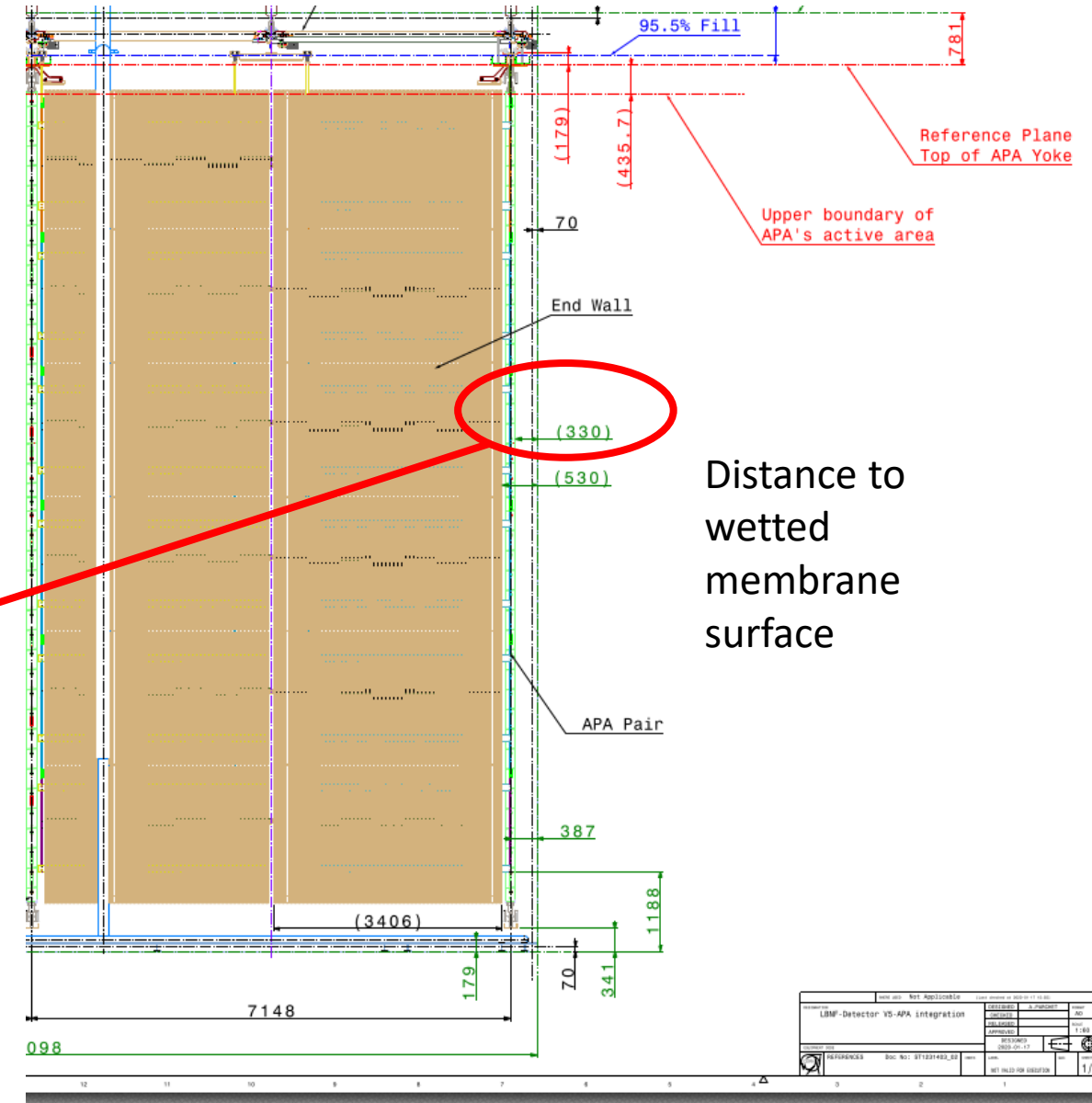
Placement in Y



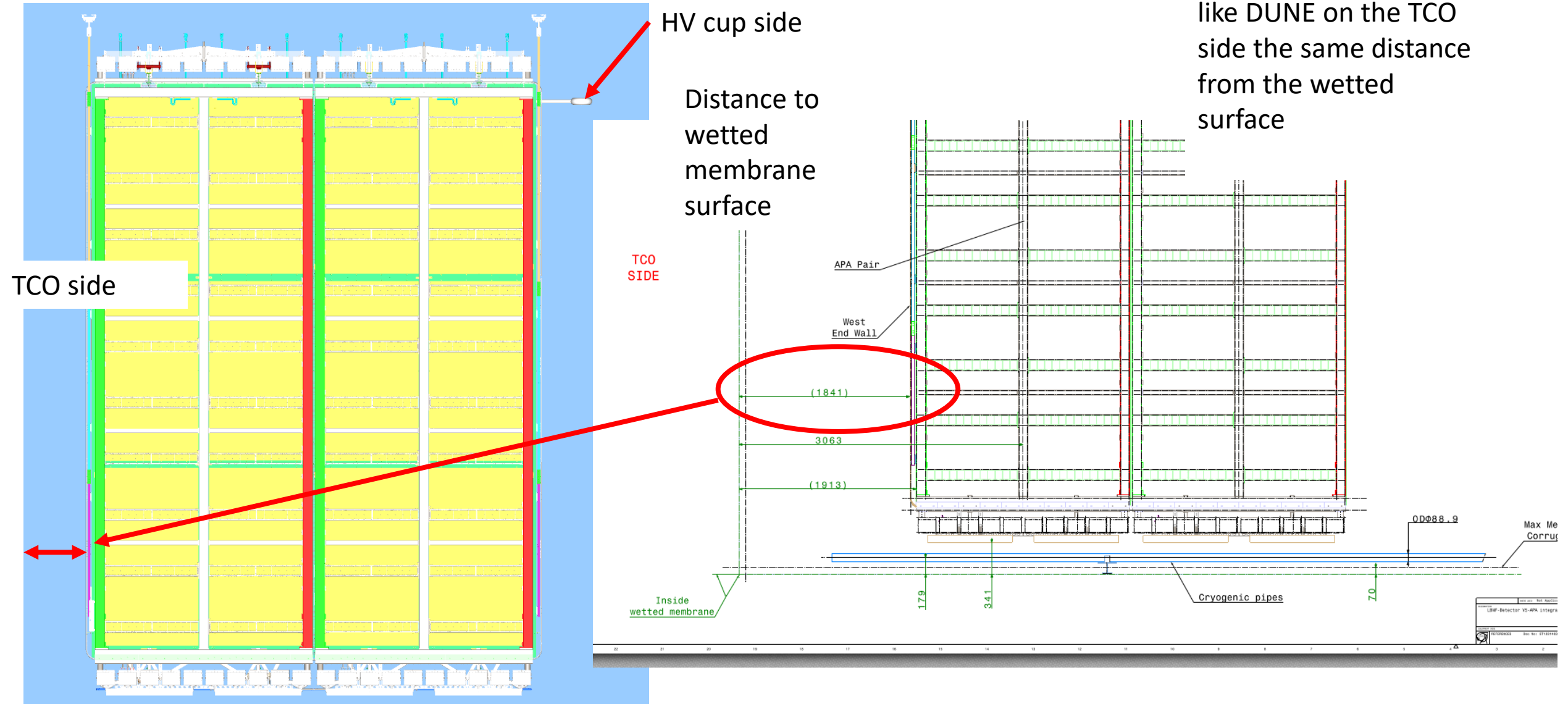
Jura side

Saleve side

Positions the detector like DUNE on the Saleve side the same distance from the wetted membrane surface

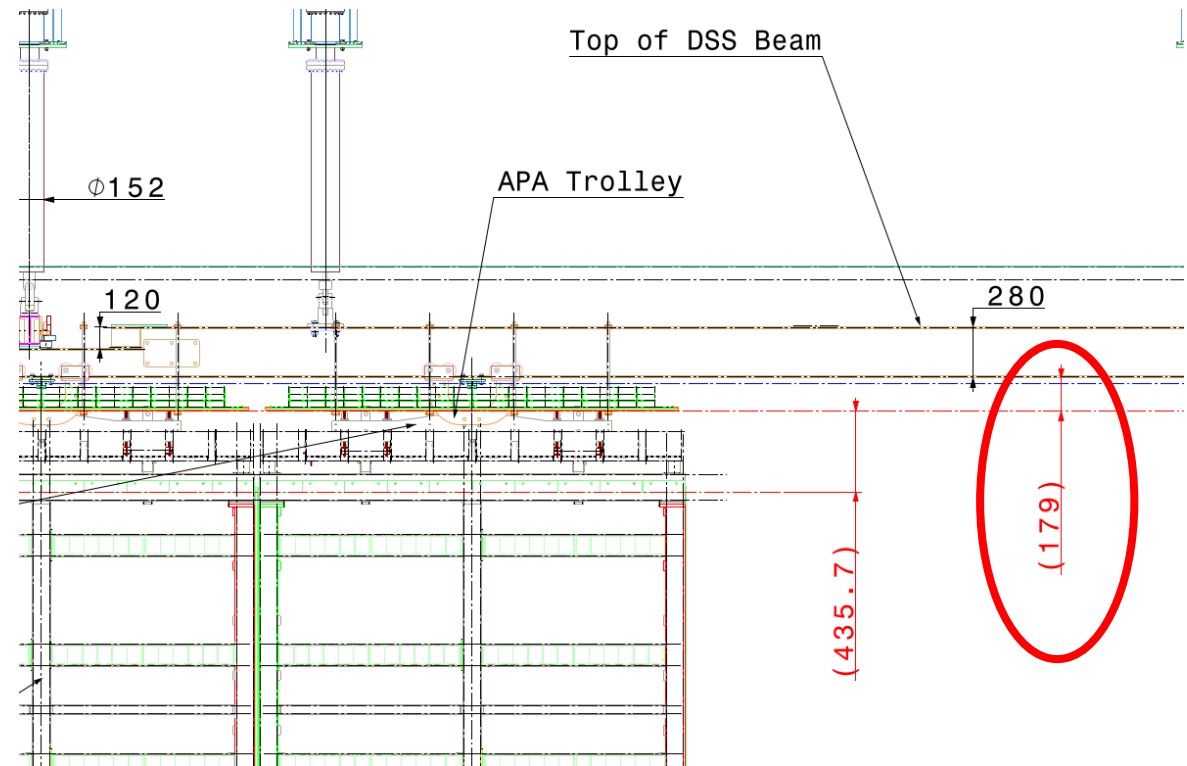


Placement in X



Z placement

- Positions the detector vertically with the same distance from the top of the yoke to the bottom of the DSS beam



Current status

