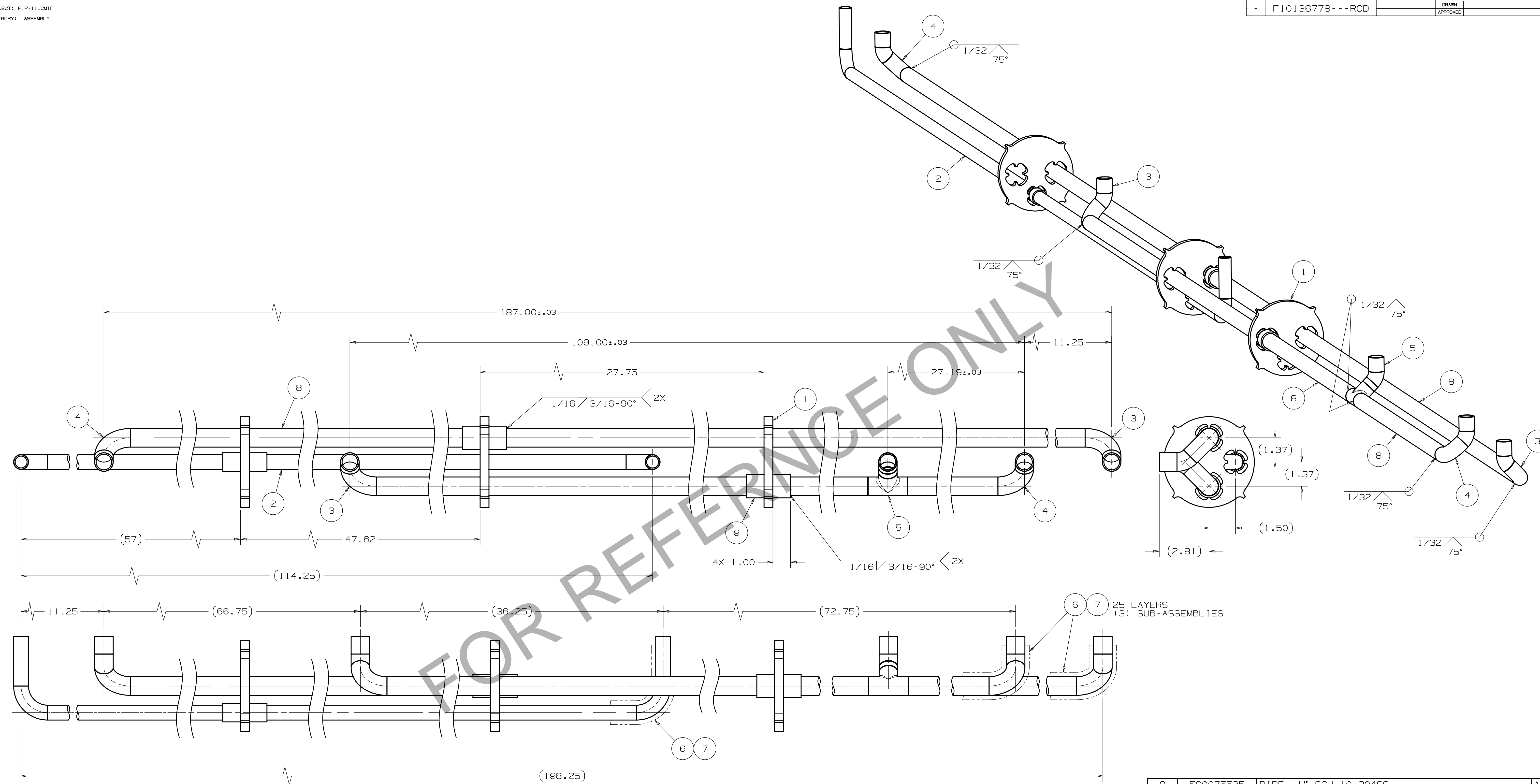


REV	REVISION CONTROL DOCUMENT	DATES	DRAWN	SIGNATURES
-	F10136778---RCD		APPROVED	



- NOTES (UNLESS OTHERWISE SPECIFIED):
1. ASSEMBLY MUST BE FREE OF DIRT, GREASE, OIL AND CHIPS.
 2. ASSEMBLY TO BE FREE OF ALL SHARP EDGES, CORNERS, AND BURRS.
 3. ALL WELDS TO BE VACUUM LEAK TIGHT. LEAK TEST: NO LEAK SHALL BE DETECTABLE ON THE MOST SENSITIVE SCALE OF A HELIUM LEAK DETECTOR WITH A MINIMUM SENSITIVITY OF 10⁻⁹ ATM. CC/SEC.
 4. WELDS TO COMPLY WITH MOST RECENT VERSION OF PROCESS PIPING CODE ASME B31.3 FOR NORMAL FLUID SERVICE. GROOVE WELDS TO BE COMPLETE PENETRATION. RELATED DOCUMENTATION OF MATERIALS, WELDING, AND IN-PROCESS INSPECTION MUST BE INCLUDED WITH THE FINAL PRODUCT DELIVERY.

ITEM	FERMI #	PART NAME	QTY
9	FC0075525	PIPE, 1" SCH.10 304SS	A/R
8	FC0073288	PIPE, 3/4" SCH.10 304 SS	A/R
7	FC0051571	MLI BLANKET SPACER MATERIAL - REEMAY SPUNBONDED POLYESTER	A/R
6	FC0051570	REFLECTOR, FLAT - ENERGY DOUBLER, CRYOSTAT	A/R
5	F10144881	PIPING SPOOL, ROLLING OFFSET TEE	1
4	F10136953	PIPING SPOOL, ROLLING OFFSET, LEFT HAND	2
3	F10136779	PIPING SPOOL, ROLLING OFFSET, RIGHT HAND	2
2	F10136775	5K RETURN INTERNAL PIPING ASSEMBLY	1
1	F10126720	SPIDER	1

UNLESS OTHERWISE SPECIFIED		DRAWN	C.REID	DATE	31-Mar-2020
±.X	±.XX	±.XXX	±X/X	CHECKED	DATE
.1	.02	.005	1/16 2.5"	APPROVED	DATE
BREAK ALL SHARP EDGES, MAX: .015		USED ON			
DO NOT SCALE DRAWING		F10126703			
DIMENSIONS BASED ON: ASME Y14.5-2009		MATERIAL			
MAX MACHINE ALL SURFACES: 125√		SEE PARTS LIST			
DRAWING UNITS: INCHES		GROUP: Technical Division - Design and Drafting CASE CODE: OURS			
THIRD ANGLE PROJECTION		SCALE		SIZE	DRAWING NUMBER
		3:8		D	F10136778
		SHEET		REV	
		1 of 1		-	



INTERNAL PIPING ASSEMBLY

TEMPLATE VERSION: 2018.12.03