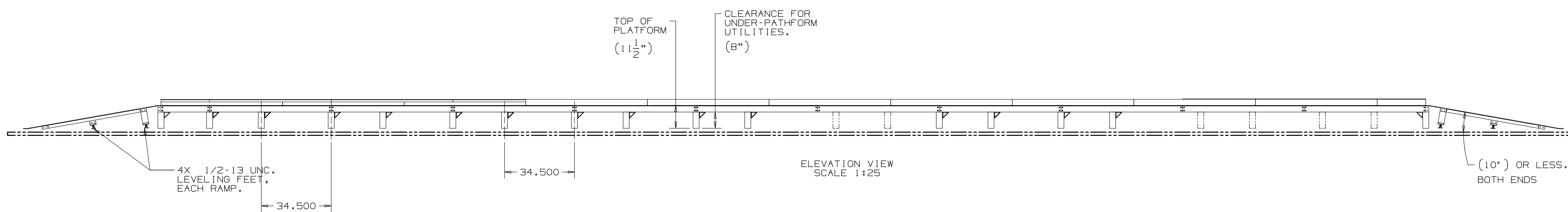


8X FSHC
5/16-18 BOLTED
INSTALLATION
CONNECTIONS,
EACH RAMP.

TOP PANELS VIEW
SCALE 1:25



TOP OF
PLATFORM
(11 1/2")

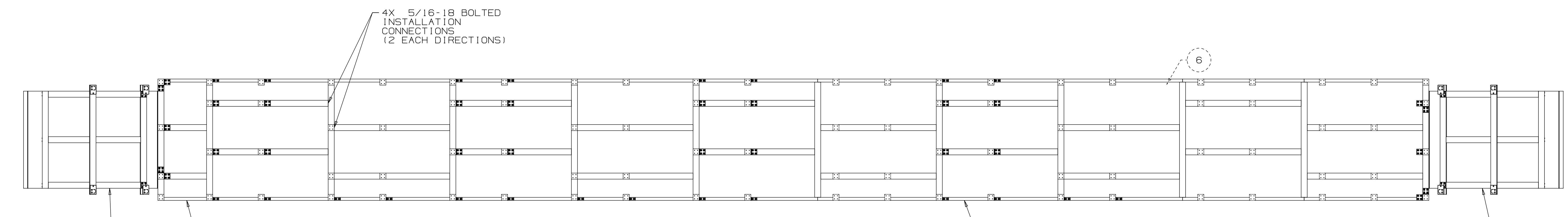
CLEARANCE FOR
UNDER-PATHFORM
UTILITIES.
(8")

4X 1/2-13 UNC.
LEVELING FEET,
EACH RAMP.

ELEVATION VIEW
SCALE 1:25

(10°) OR LESS.
BOTH ENDS

4X 5/16-18 BOLTED
INSTALLATION
CONNECTIONS
(2 EACH DIRECTIONS)



WALL SIDE
(INSTALLATION)

BOTTOM VIEW
SCALE 1:25

| | | | |
|------|-----------|--|-----|
| 6 | F10122820 | HEBT RAISED FLOOR TOE KICK ANGLE 2 FT LONG | 2 |
| 5 | F10121550 | SIMPLE, HEBT RAISED FLOOR 2FT X5FT SECTION | 1 |
| 4 | F10122819 | HEBT RAISED FLOOR TOE KICK CHANNEL, 5FT LONG | 3 |
| 3 | F10122805 | HEBT RAISED FLOOR TOE KICK ANGLE 5FT LONG | 17 |
| 2 | F10120632 | SIMPLE, HEBT RAISED FLOOR RAMP ASSEMBLY | 2 |
| 1 | F10122829 | SIMPLE, HEBT RAISED FLOOR STRUCTURE, 5FT X 5FT | 10 |
| ITEM | FERMI NO | PART NAME | QTY |

| | | | | | | | | |
|---|------|-------|------|----|------------------|------------|-----------|--|
| UNLESS OTHERWISE SPECIFIED | | | | | DRAWN | T. HAMERLA | DATE | |
| ±.X | ±.XX | ±.XXX | ±X/X | ±" | CHECKED | | DATE | |
| .1 | .02 | .005 | 1/16 | 1" | APPROVED | | DATE | |
| BREAK ALL SHARP EDGES, MAX: .015 DO NOT SCALE DRAWING DIMENSIONS BASED ON: ASME Y14.5-2009 MAX MACHINE ALL SURFACES: 125/ DRAWING UNITS: INCHES | | | | | USED ON | | F10118200 | |
| THIRD ANGLE PROJECTION | | | | | MATERIAL | | | |
| GROUP: Accelerator Mechanical Support | | | | | CASE CODE: OUSRS | | | |

FERMI NATIONAL ACCELERATOR LABORATORY
UNITED STATES DEPARTMENT OF ENERGY

NAME

HEBT RAISED FLOOR & RAMPS ASSEMBLY

SCALE

D

SIZE

D

DRAWING NUMBER

F10119917

SHEET

1 of 1

REV

-

TEMPLATE VERSION: 201812.03