

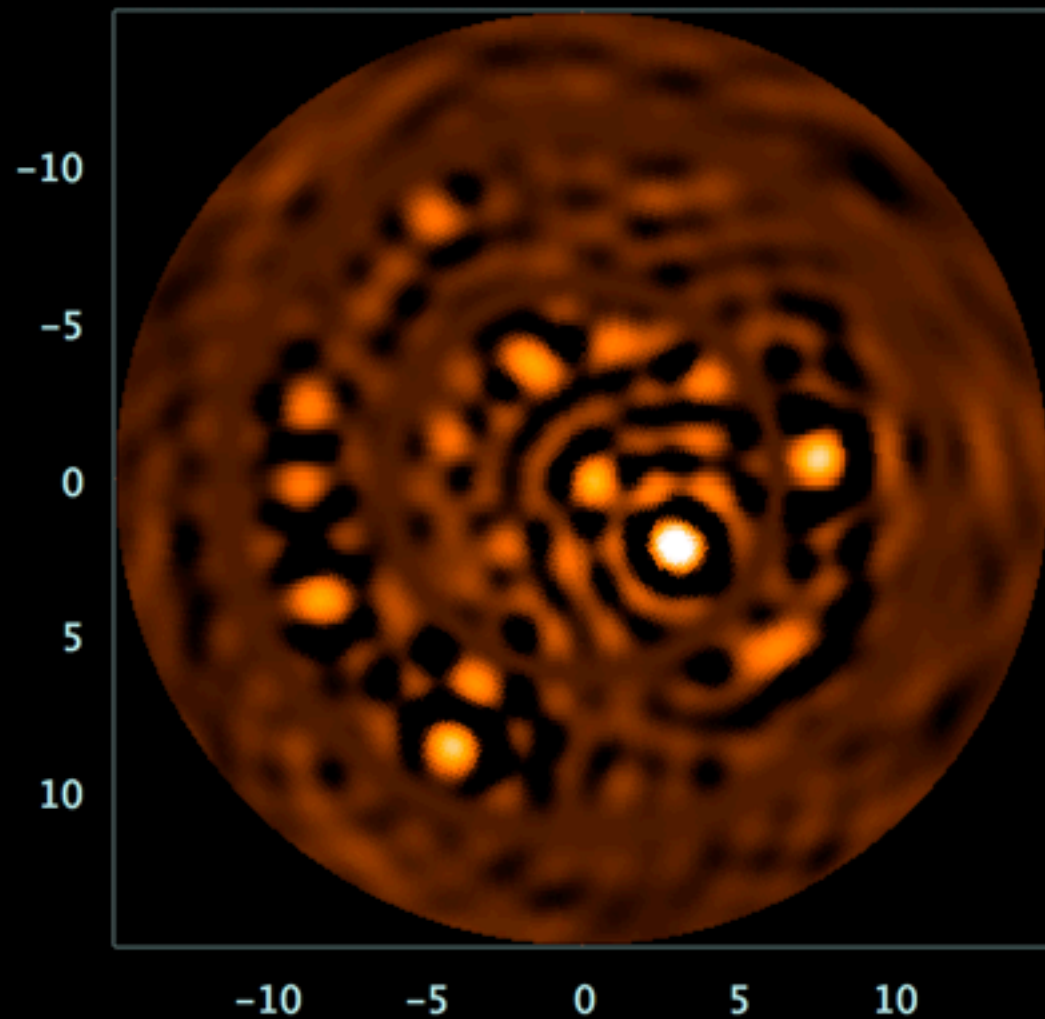
NCP map making (update)

R. Ansari - O. Perdereau
9 July 2020

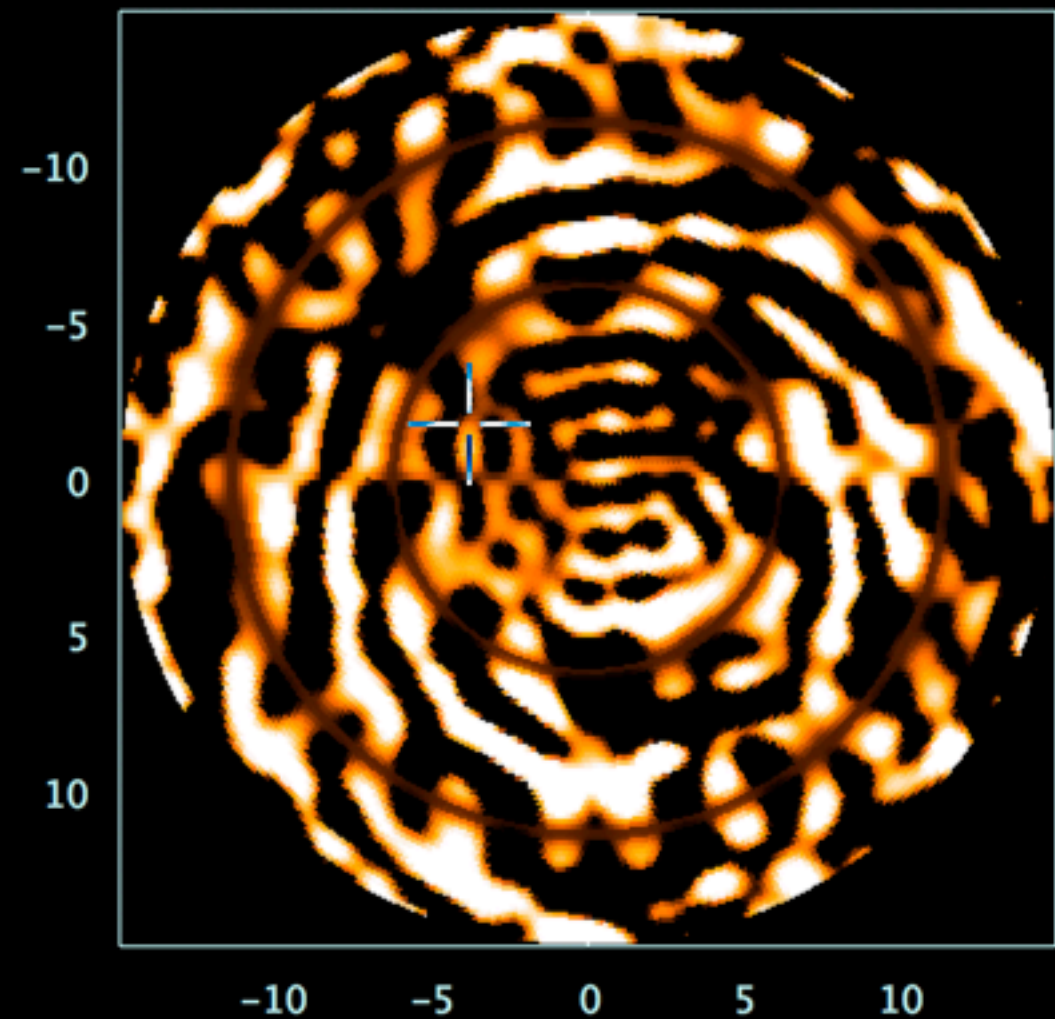
- Implementation of BFMTV (Brute Force Map making from Transit Visibilities) for the spherical geometry (NCP as a specific case)
- Possibility to add fixed position, bright sources (handling the CasA contribution to NCP for example)
- Tests under way - before application to NCP data
- Results shown here correspond to the SEVEN setup (central Tianlai dish array, 1 dish + 6 around)

Simulated Visibilities
No noise

JSkyMap m-mode map making SEVEN setup, NCP observation



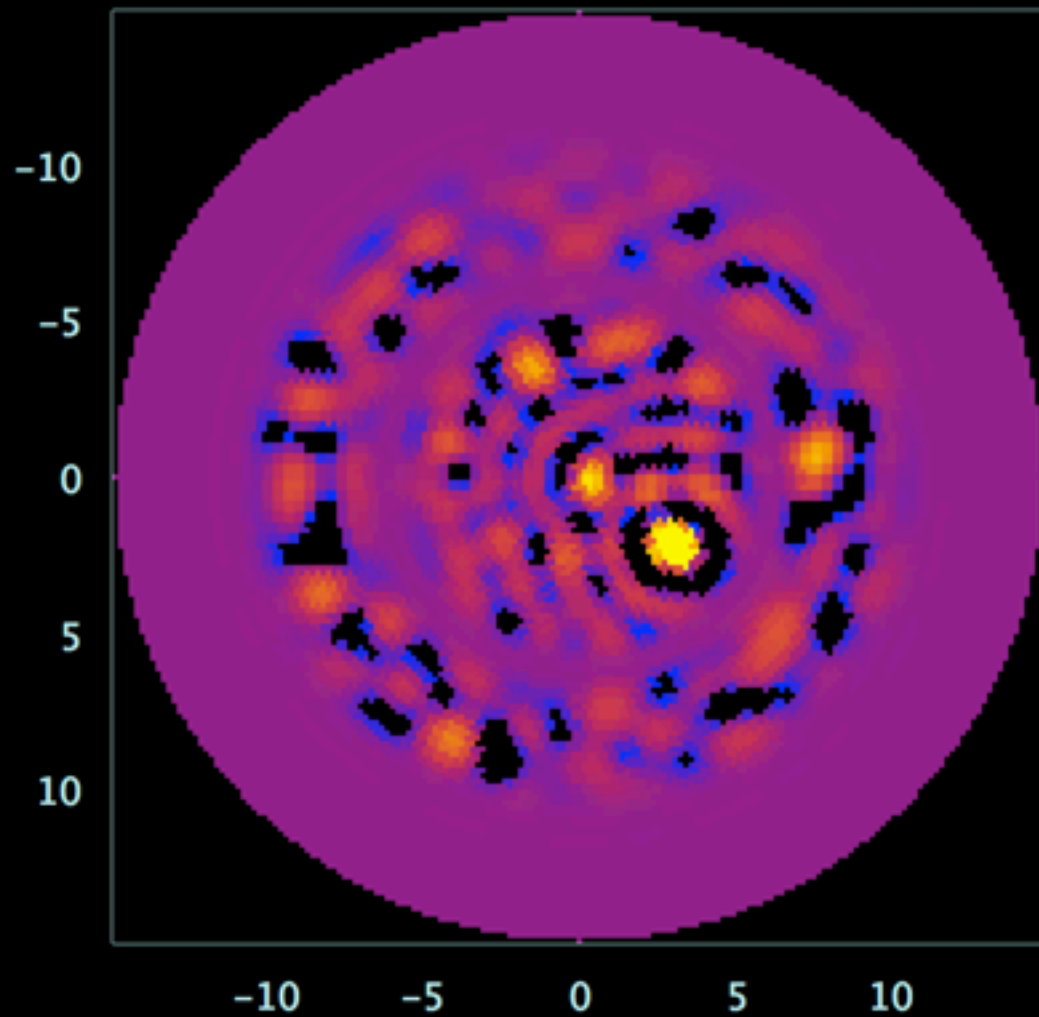
Full 24 hours



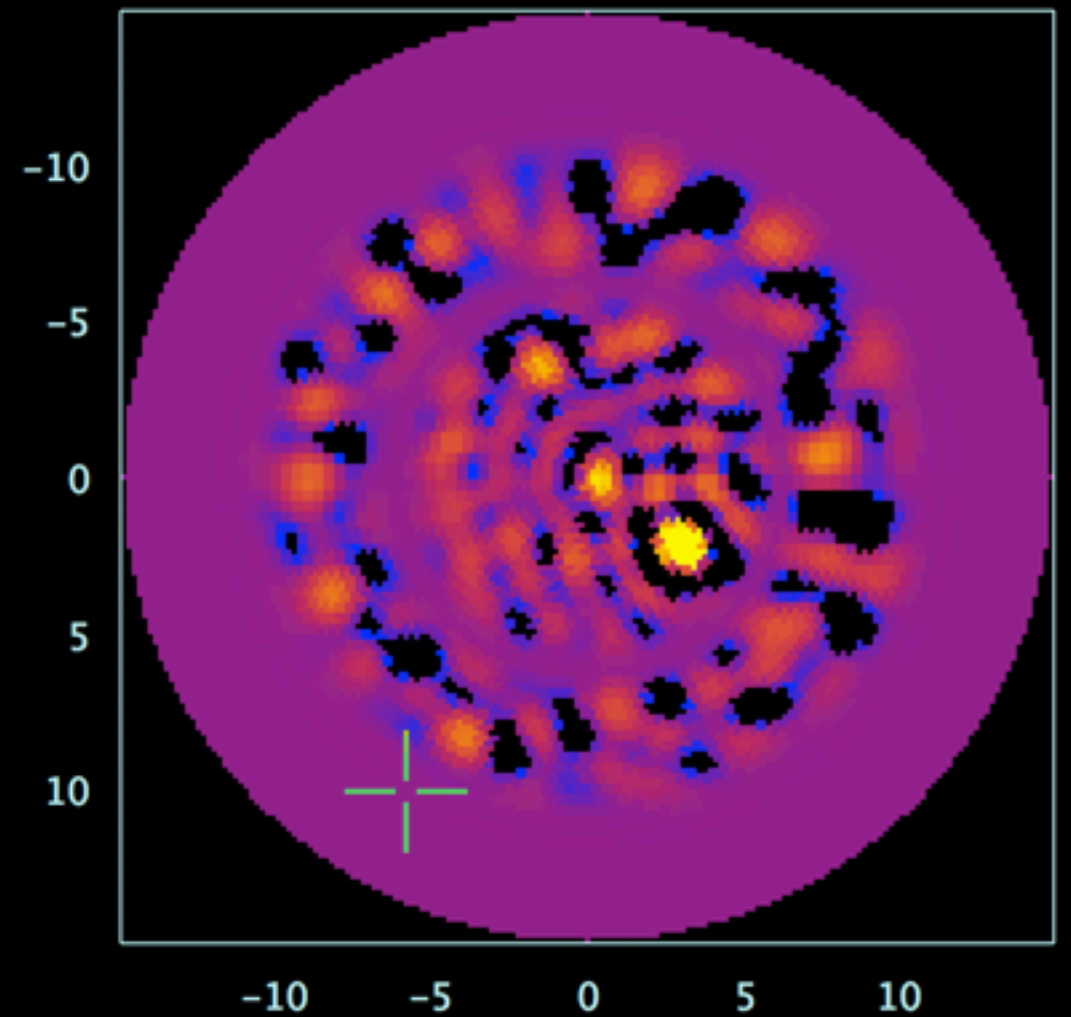
12 hours (night data), Vis=0 daytime

Simulated Visibilities
No noise

JSkyMap BFMTV_SphericalMap
SEVEN setup, NCP observation
(A matrix size 31680 x 3781)



map reconstructed from
12 hours NCP visibilities
visibilities from sources $\delta > 80$

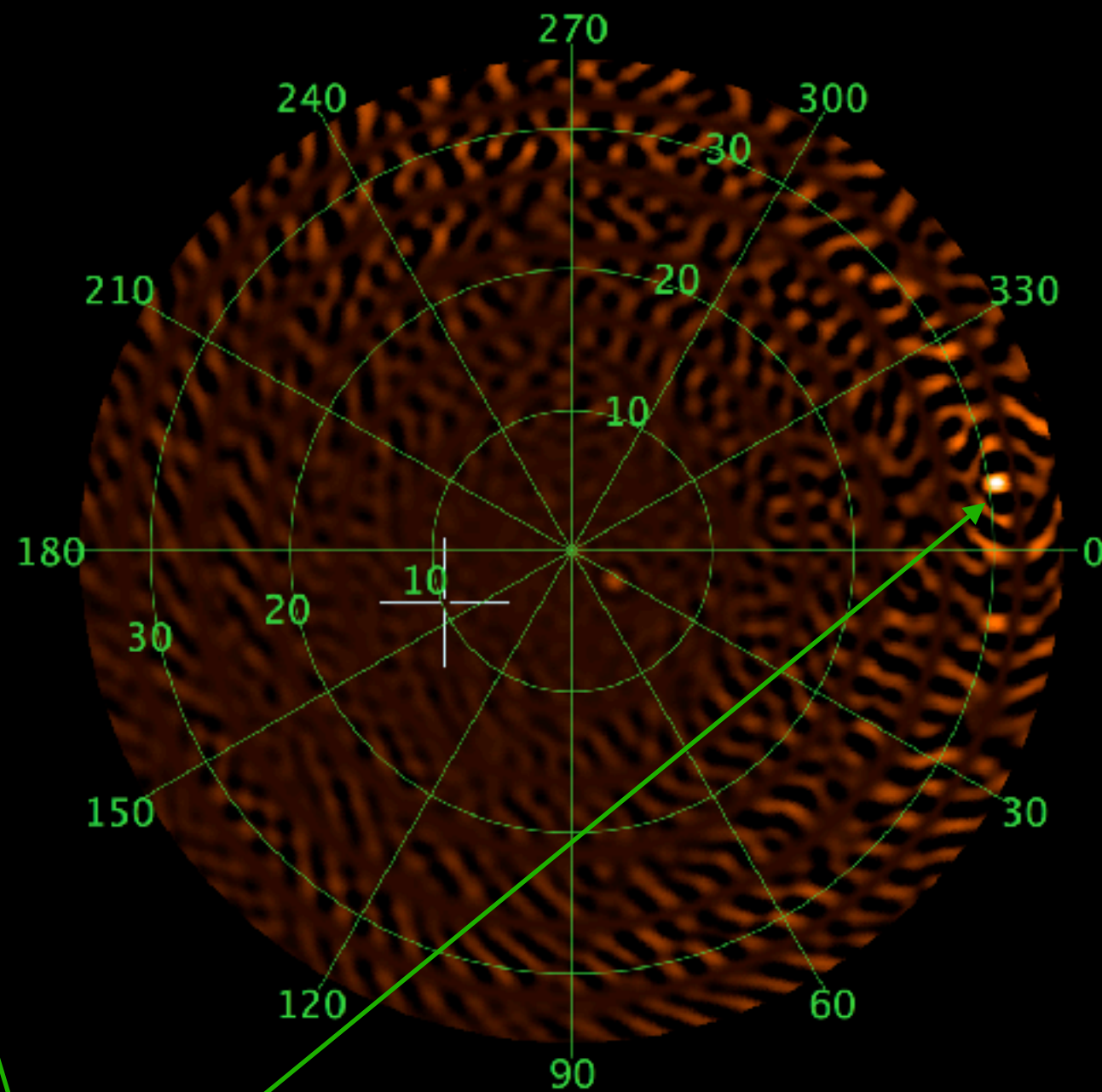
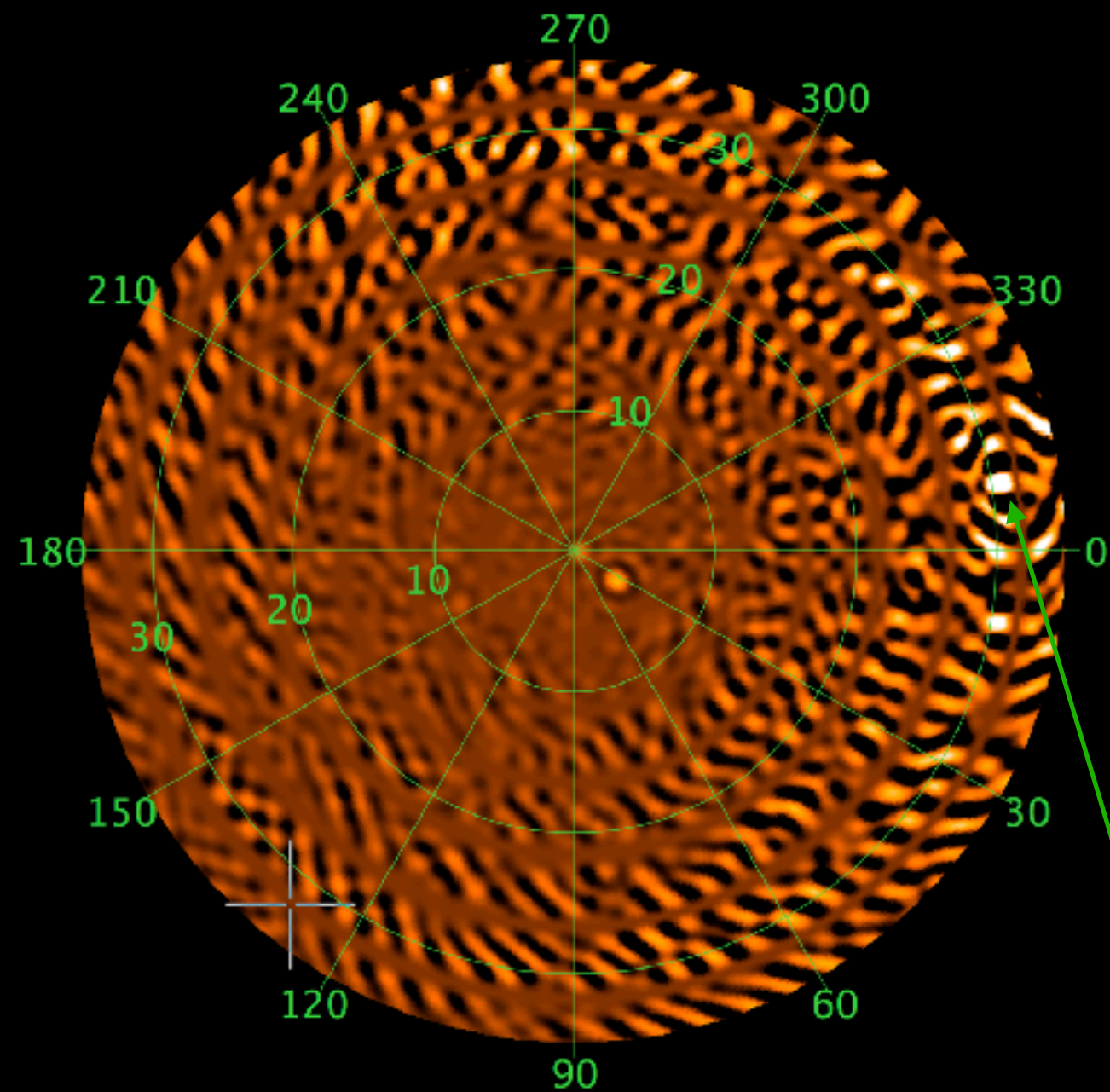


map reconstructed from
12 hours NCP visibilities
visibilities from sources $\delta > 80$,
and bright sources (CasA ...)

Simulated Visibilities
No noise

JSkyMap m-mode map making

SEVEN setup, NCP observation (with CasA)



CasA