

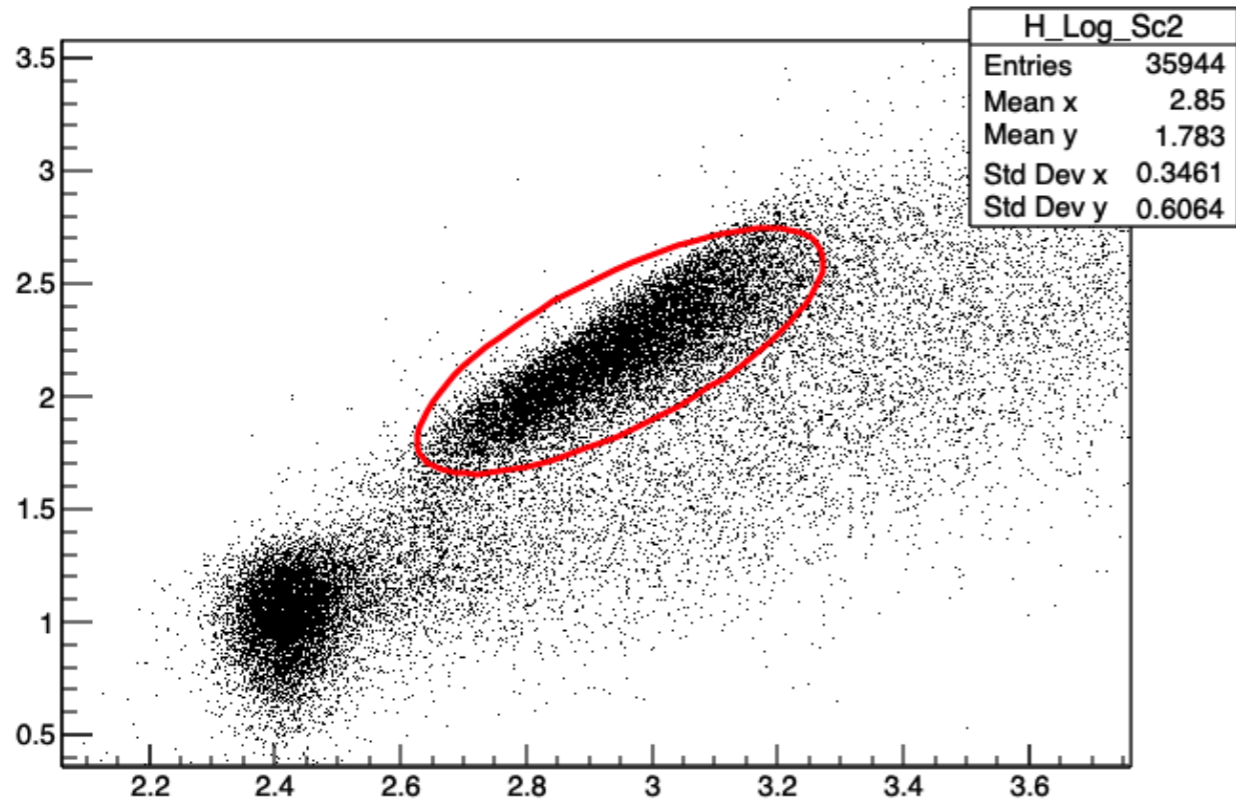
ProtoDUNE XeDoping Light Collected Updates

**Dante Totani
Oct. 30th, 2020**

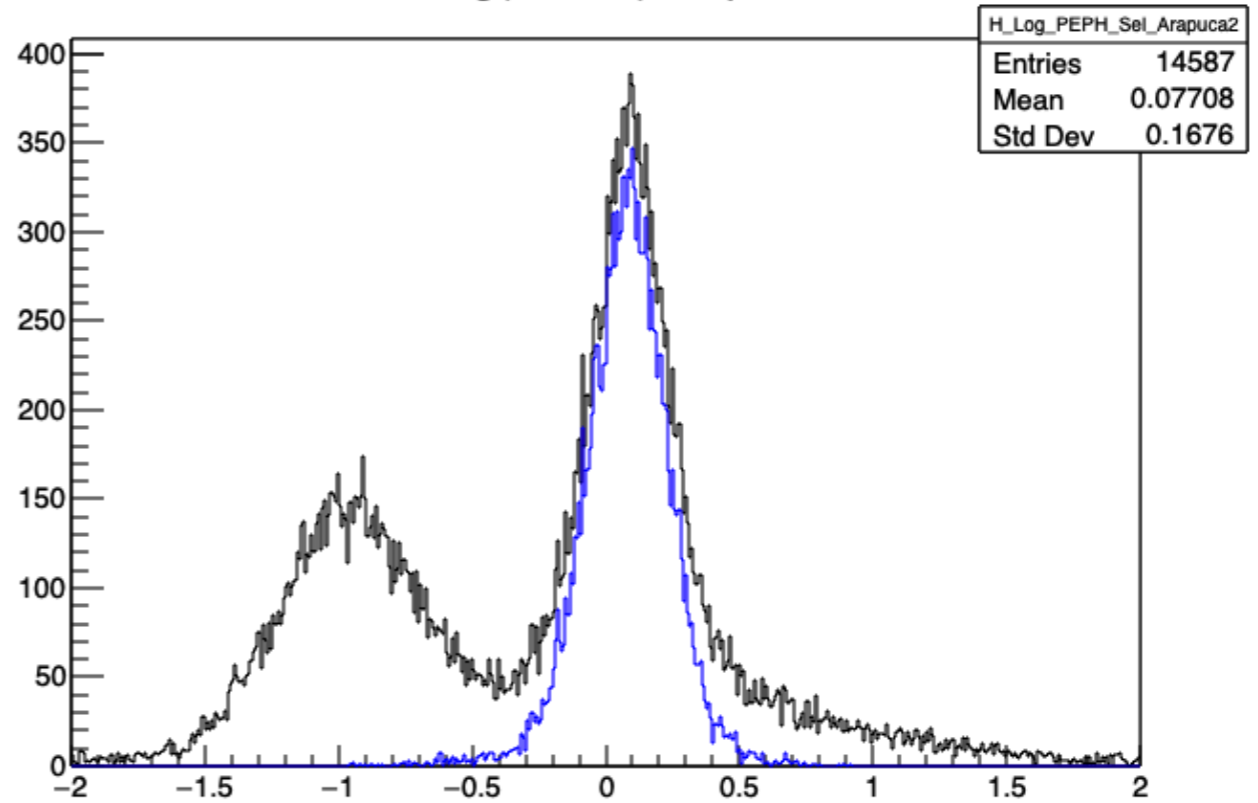
Event Selections

- CRT trigger.
- (x,y) entry/exit point on the TPC upstream /downstream wall:
($x = [-360,360]$, $y=[0,600]$, $z=0/700$) cm.
- Entry and exit in the same half TPC side.
- Outlier removal using spectra correlation.

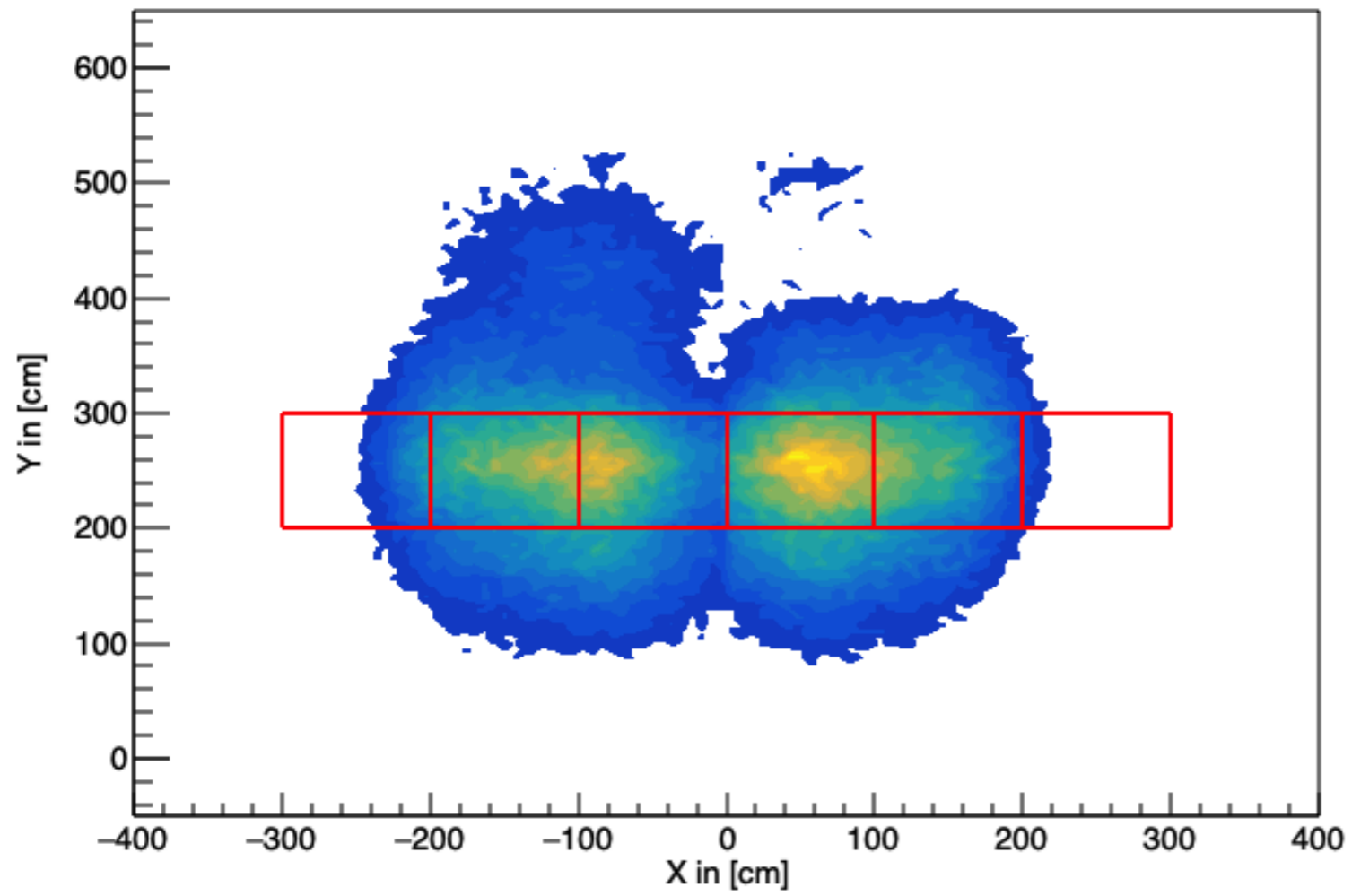
NB scatter



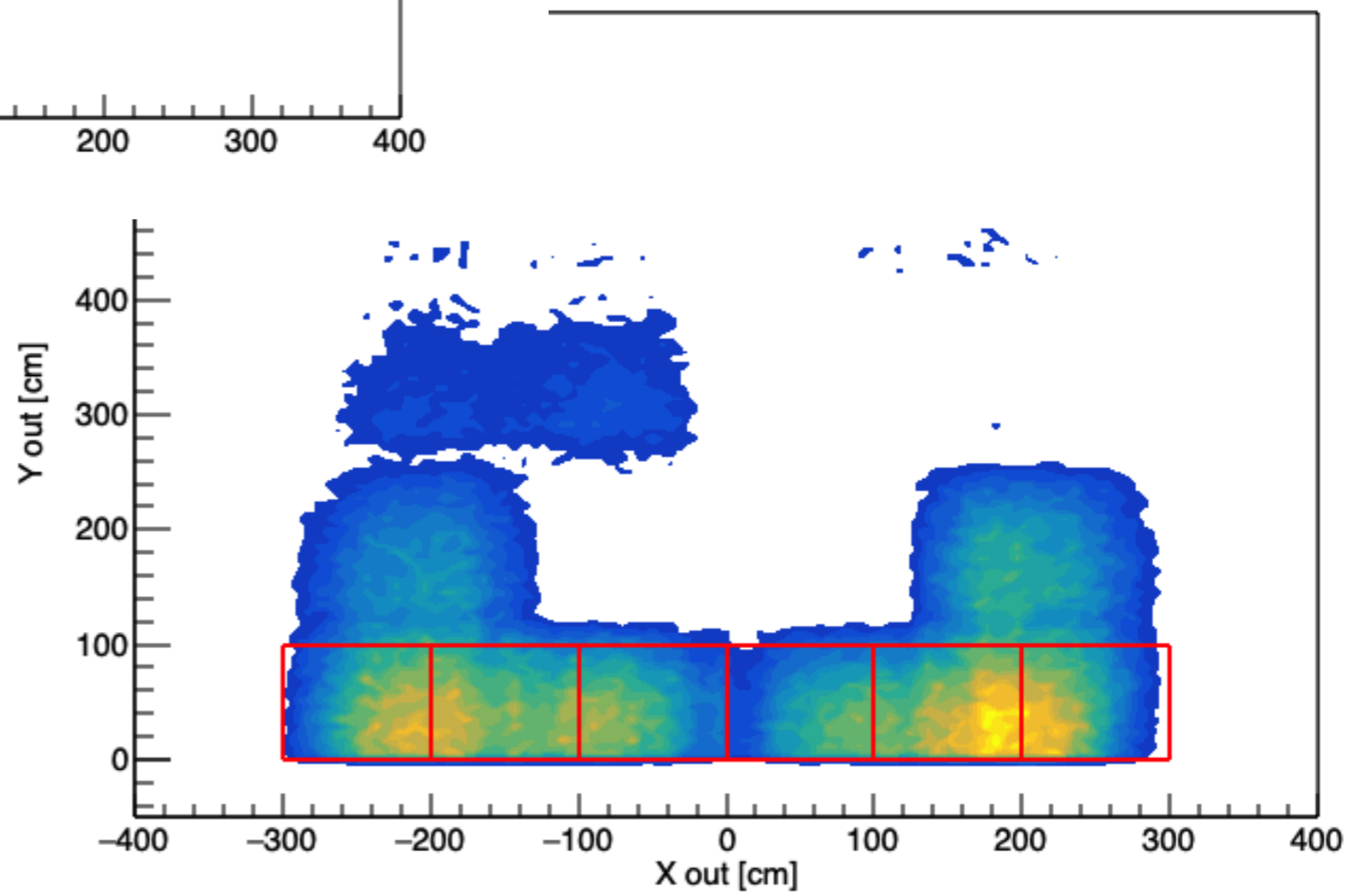
Log(PE/PH) Arap 2



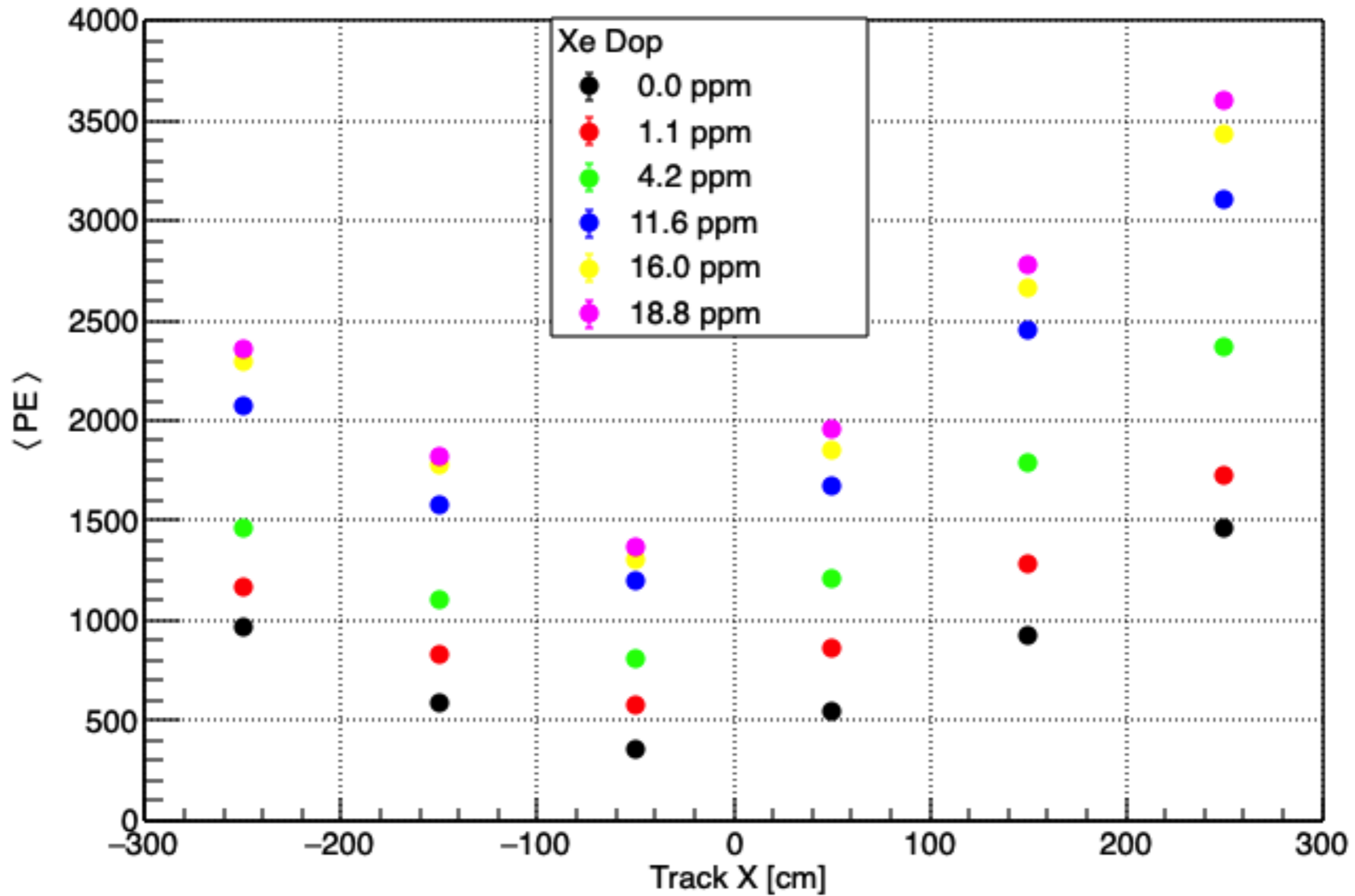
Entry Point



Exit Point



Arapuca + DS bars



Arapuca + DS bars

