

# News & activities

**SEC-Inreach, 2020/11/12**

**M. LeBlanc (Arizona) & T. Lewis (NASA Goddard)**

Welcome back!  
(Hopefully.)

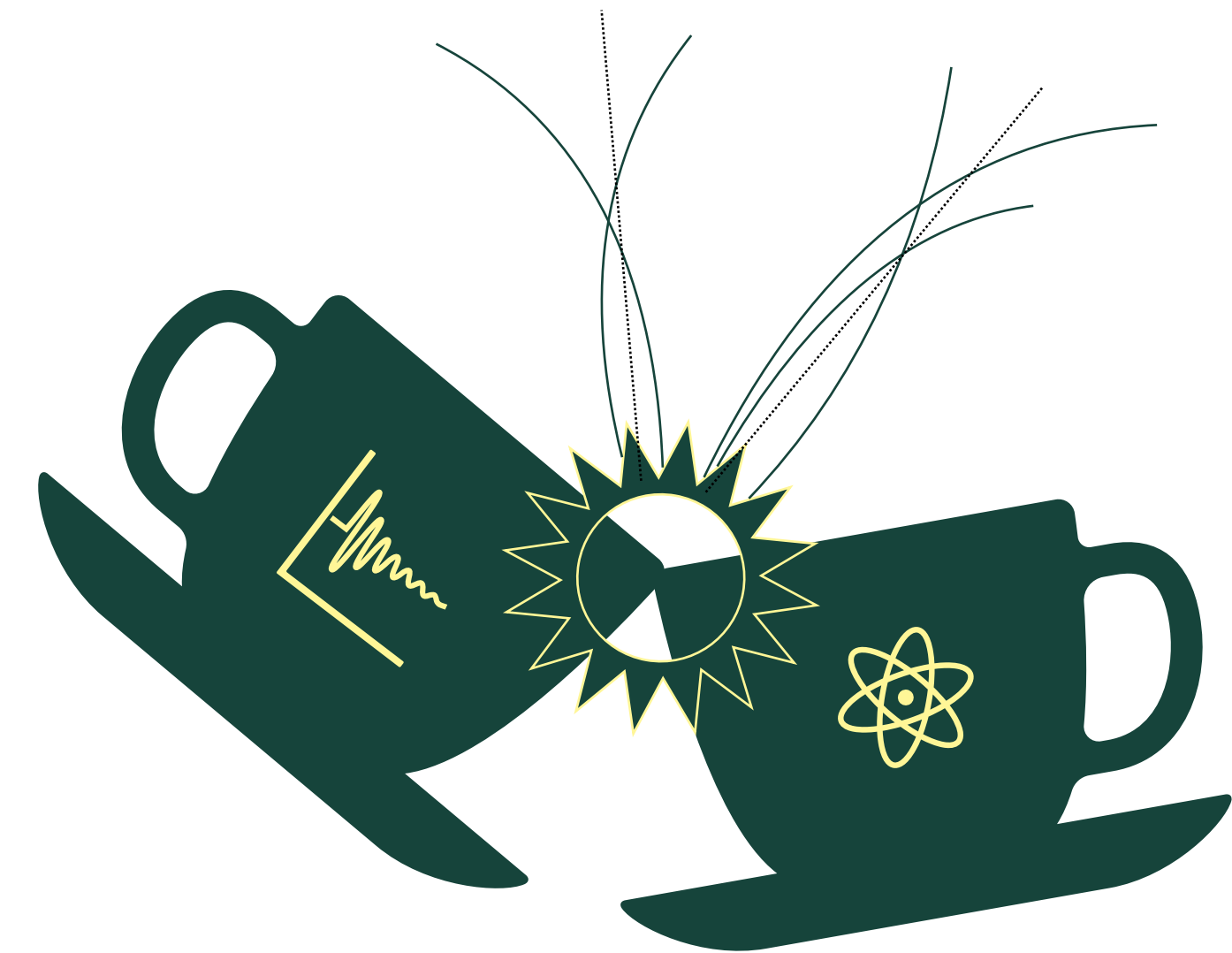
**We thought it might be nice to mention some of the things we've been up to recently!**

# Intro to Snowmass / Frontiers Series

- An introductory series of presentations to onboard early-career members to the Snowmass process was organised in the late Summer.
- These events were recorded, and are available on YouTube:
  - Ep. 0: [What is Snowmass?](#)
  - Ep. 1: [Cosmic, Energy & Instrumentation](#)
  - Ep. 2: [Computation, Community Engagement & Neutrino](#)
  - Ep. 3: [Accelerator, Underground, Rare Processes & Precision, Theory](#)
- Initiative led by **T. Lewis & C. Lin.**

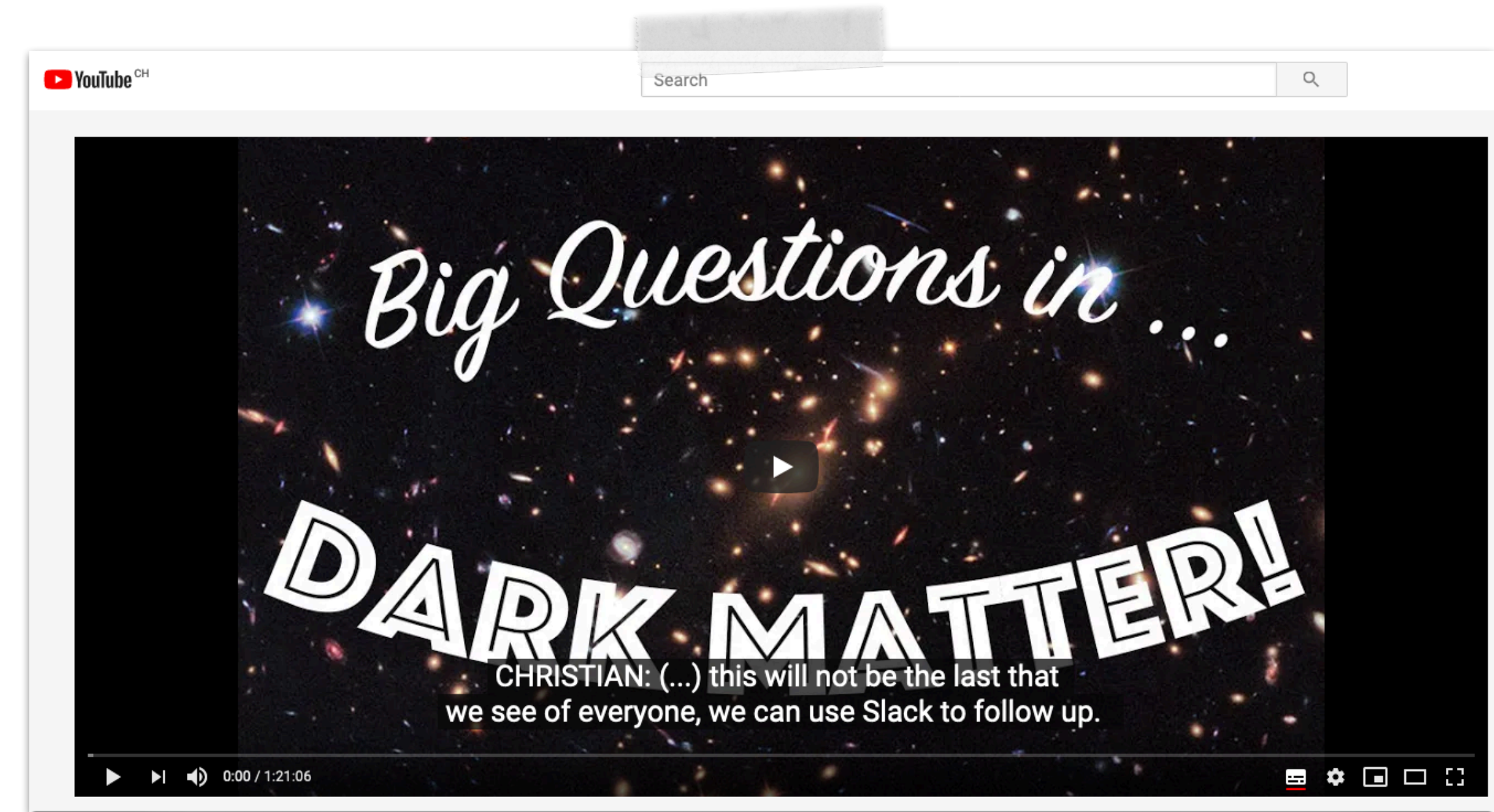
# Coffee Collisions!

- A replacement for the kind of networking you do in the coffee-break line at a conference.
  - Participants were paired for video-chats over coffee, based on their common interests and relative career stages.
    - Matches at the same institute or within a large collaboration were avoided.
  - ~120 coffee meetings between >200 participants are starting to take place!
- Initiative led by **J. Roloff**



# “Big Questions...” Colloquia

- The **Big Questions in Particle Physics** colloquium series is trying to help early-career researchers reflect on the long-term future of particle physics.
  - Each colloquium features a pair of speakers with different backgrounds, who will present complementary views of these Big Questions.
  - Ep. 1 took place on 30 October
    - ~112 max participants, [recording](#)
  - Ep. 2 coming up soon, on 20 November!
    - Topic will be neutrino physics
- Initiative led by **C. Herwig**



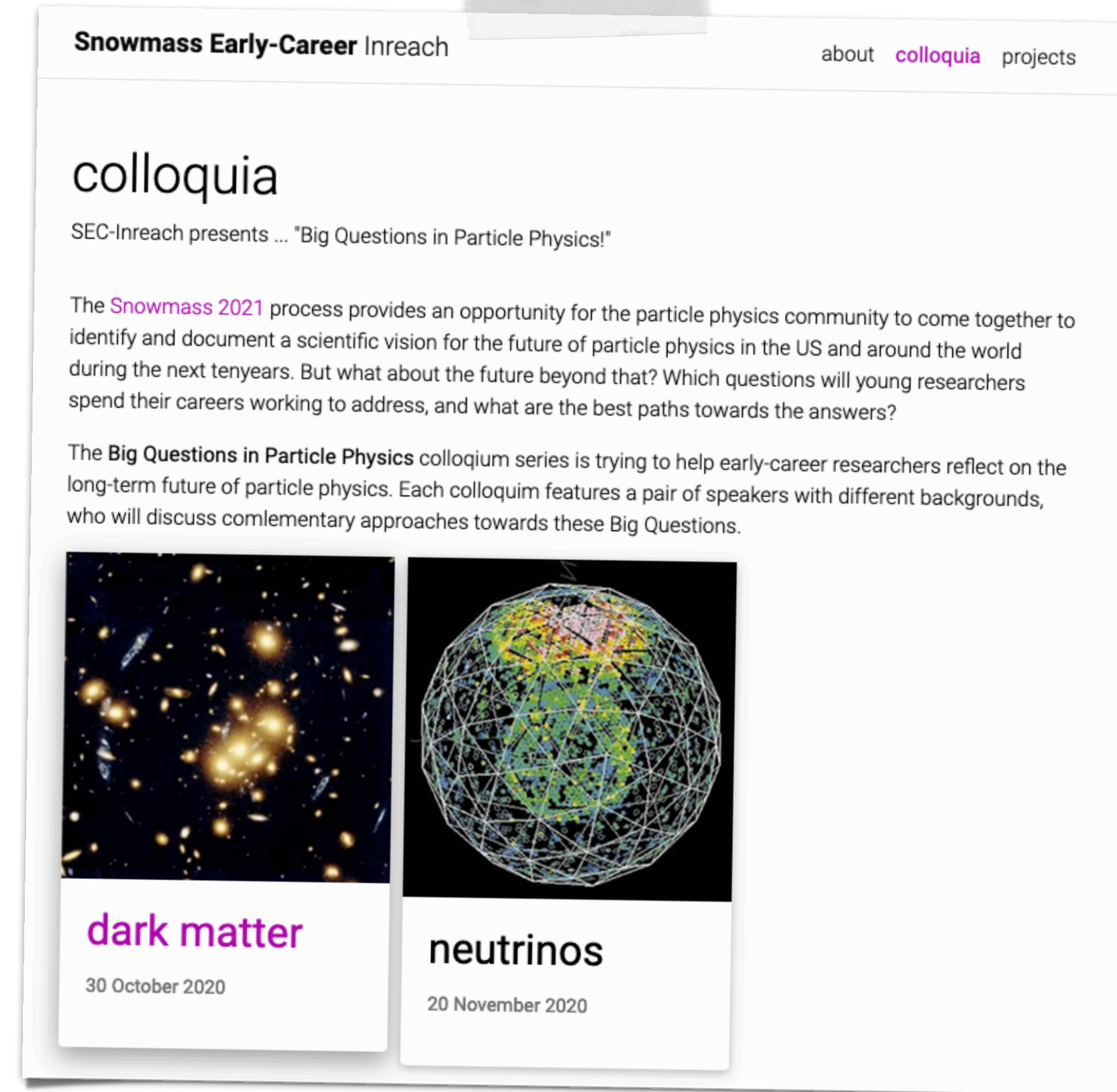
# What is the impact of SEC?

- Catalogue of LOIs with SEC involvement, with hopes to make the impact of early-career researchers apparent.
- Initiative led by **J. Zettlemoyer**
- Development of a HEP-wide early-career advocacy network.
- Join the discussion on the Snowmass slack:  
[#sec-network-beyond-snowmass](#)
- Initiative led by **M. Kargiantoulakis**



# Like, Subscribe & Follow SEC-Inreach!

- We're on the web! A SEC-Inreach twitter account and YouTube channel have been created.
- [Twitter \(@SEC\\_Inreach\)](#)
- [YouTube channel](#)
- ["Portfolio"](#)
- Initiative led by **MLB** (please send help if you use Facebook)



# What's next?

- There are a few directions we would like to devote more effort.
  - **Professional development events** for the SEC community would be particularly welcome.
    - Panel discussions regarding things like: faculty job searches, grant reviews, career pipeline info, meetings with funding agencies, etc.
  - We'd like to reach out more to engineers and technicians (not just early-career), to get these groups better integrated within the Snowmass process.
  - We'd also like to support **your** cool new idea!
- Initiative led by ... **you?**



#SNOWMASS2021