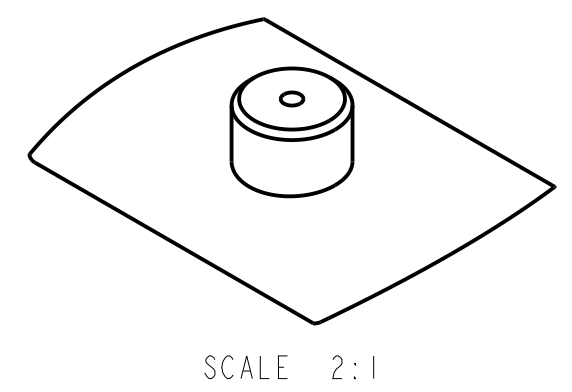
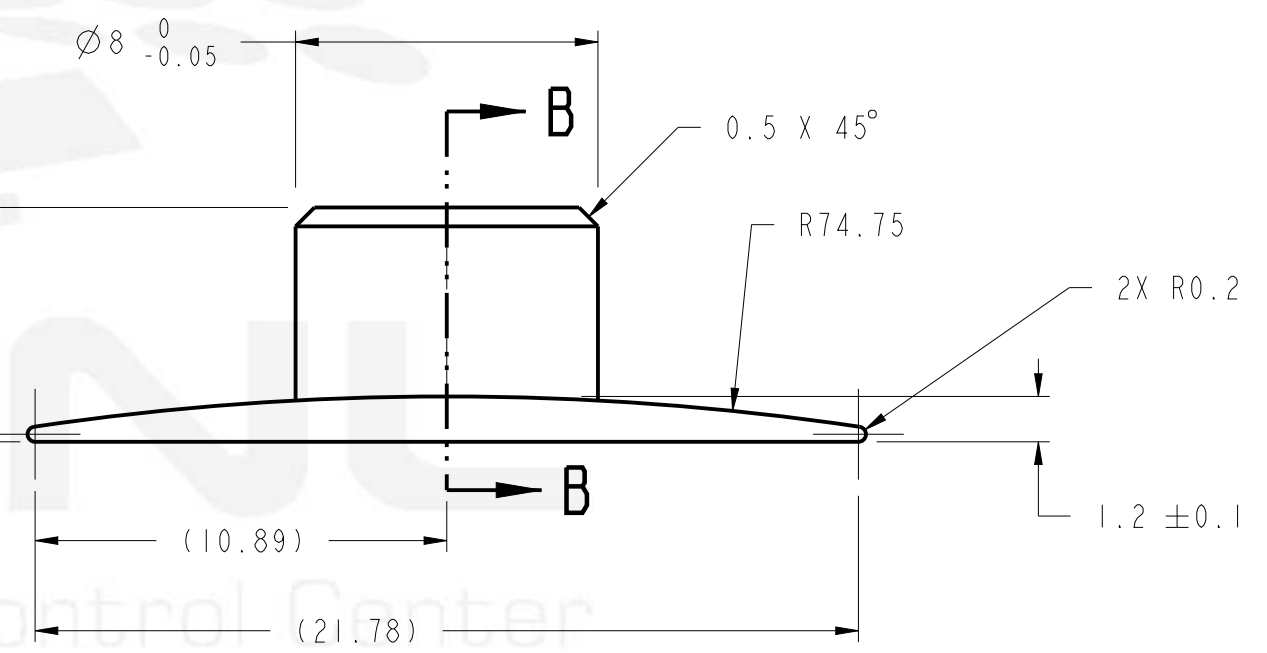
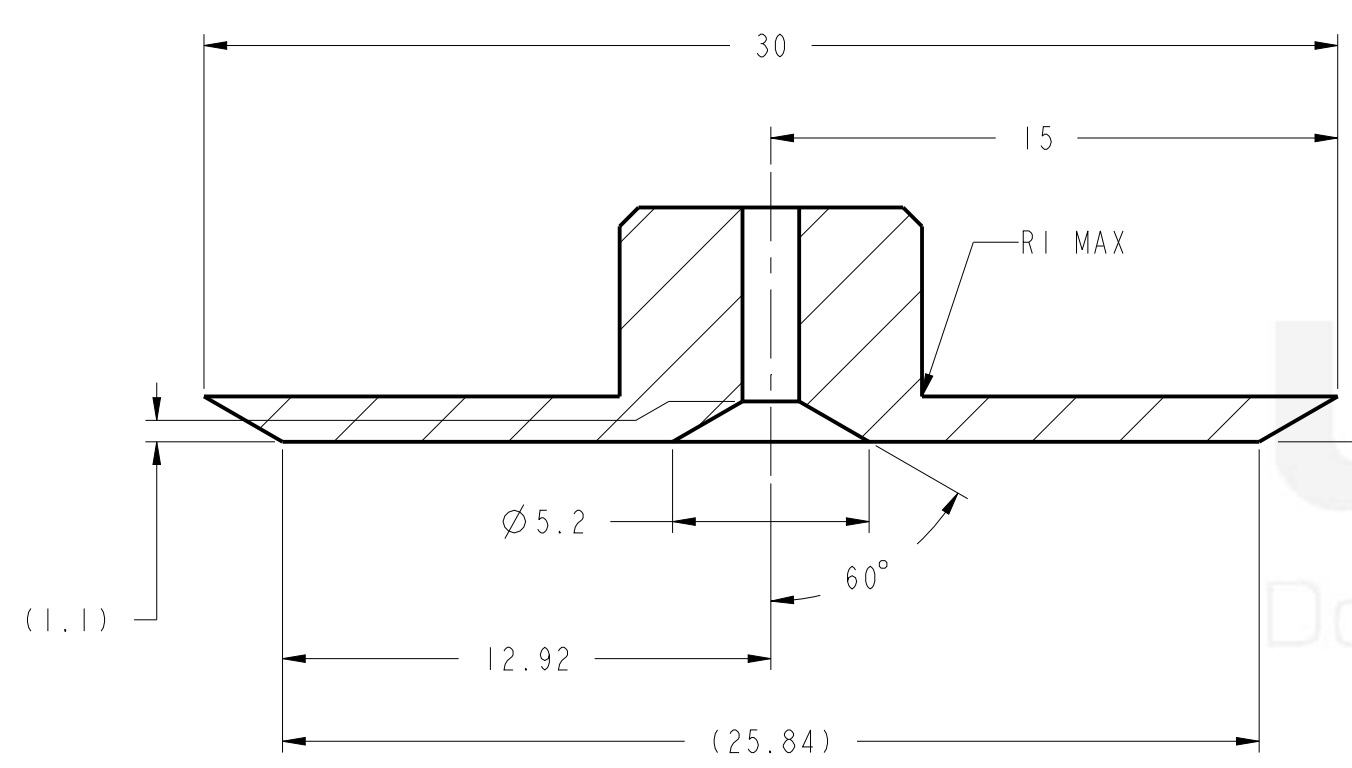
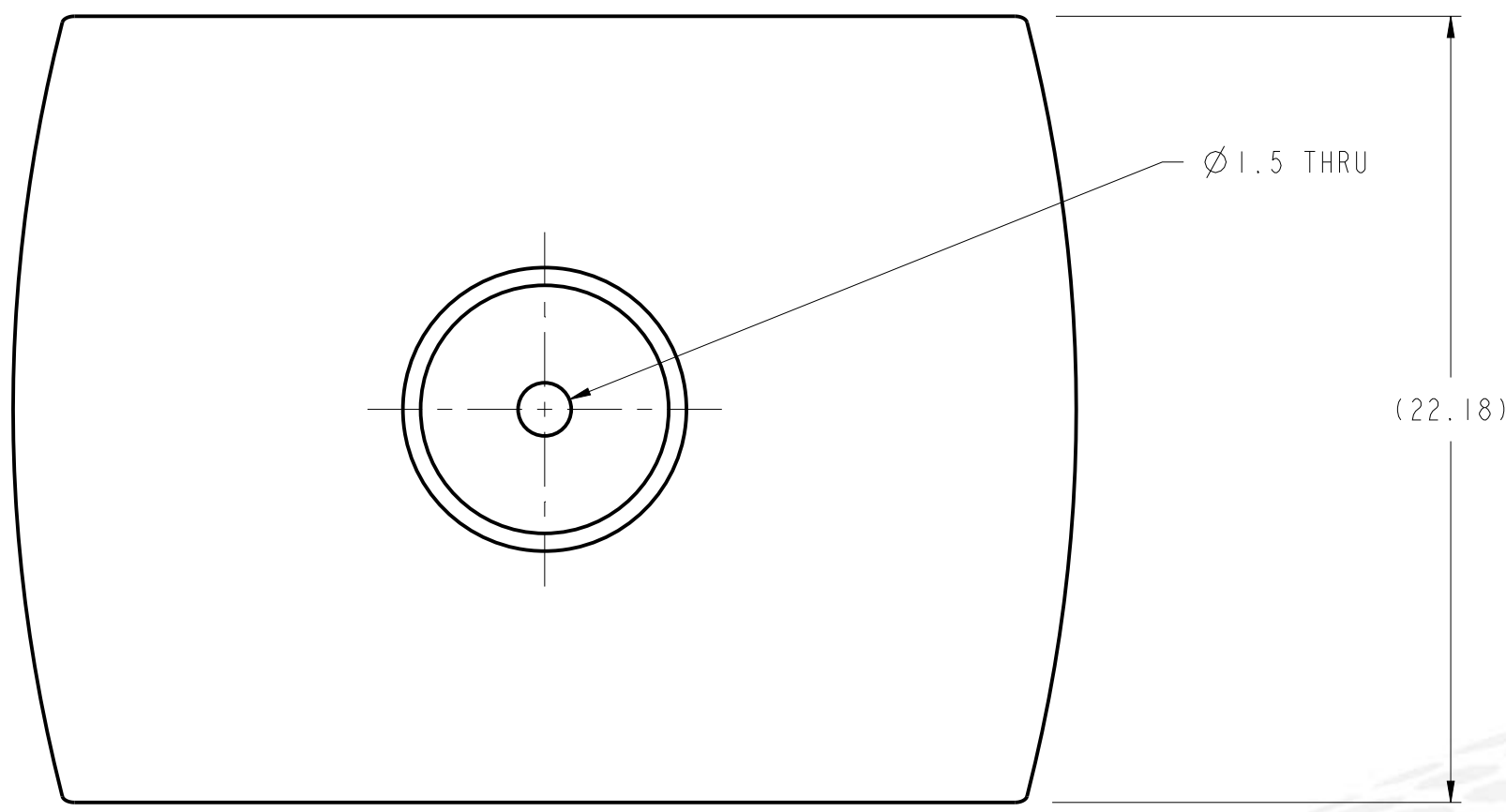


4 | 3 | 2 | 1

NOTES: UNLESS OTHERWISE SPECIFIED

1. ALL DIMENSIONS ARE IN MILLIMETERS (mm) AND VALUES ARE IN SI UNITS. DIMENSIONS AND VALUES IN BRACKETS ARE U.S. CUSTOMARY UNITS (inch) CONVERTED FROM MILLIMETERS / SI UNITS.
2. APPLICABLE STANDARDS AND SPECIFICATIONS:  
ASME Y14.5M-2009, DIMENSIONING AND TOLERANCING
3. 1.6 [63] FINISH ALL MACHINED SURFACES PER ASME B46.1, SURFACE TEXTURE.
4. REMOVE ALL BURRS AND BREAK EDGES 0.25 [.010] TO 0.75 [.030] CHAMFER OR RADIUS. RADII MUST MAKE A SMOOTH TRANSITION WITH ADJACENT SURFACES.



CHANGE DESCRIPTION (SEE LBNL PDM FOR REV HISTORY)	
ADDED DIM: R 1 MAX	
AUTHOR	Wirdzek, John
CHECKED BY	DWCHENG
CHECKED AT	Jan 30 2019 3:59:28 PM PST
RELEASED BY	DWCHENG
RELEASED AT	Mar 29 2019 11:56:23 AM PDT
THIS DRAWING IS THE PROPERTY OF ERNEST ORLANDO LAWRENCE BERKELEY NATIONAL LABORATORY (LBNL) AND ANYTHING PRODUCED FROM THESE DRAWINGS IS SUBJECT TO LBNL'S INTELLECTUAL PROPERTY RIGHTS. THIS DRAWING IS LOANED ON A CONFIDENTIAL BASIS SUBJECT TO RETURN ON DEMAND AND NOTHING HEREIN MAY BE REPRODUCED, USED OR DISCLOSED IN WHOLE OR PART WITHOUT PRIOR WRITTEN PERMISSION OF LBNL.	

UNLESS OTHERWISE SPECIFIED	
TOLERANCE X ± 1.0 X ± 0.1 .XX ± 0.05	
FRACTIONS: ± - / - -	
ANGLES: ± 1°	
MACH. SURFS.: 3.2um ✓	
REFERENCES - THREADS ARE CLASS 2 - BREAK EDGES 0.5 MAX, ON MACHINED WORK - REMOVE BURRS, WELD SPLATTER & LOOSE SCALE	

MAT 2:		NOTES:	
MAT 1: RYTON R4-02		NOTES:	
PROJECT NAME SUPERCONDUCTING MAGNET PROGRAM		ERNEST ORLANDO LAWRENCE BERKELEY NATIONAL LABORATORY UNIVERSITY OF CALIFORNIA	
DRW REF DOC ASME Y14.5-2009	DRAWING UNITS mm - kg - s	LARP QXF QXF - LONG MAGNET TOOLING COIL BUMPER, 8mm	
SCALE 5:1 NOT PRINTED TO SCALE	THIRD ANGLE 	CATEGORY CODE SU3323	ITEM NUMBER SU-1010-1713
SHEET SIZE C	SHEET 1 OF 1	REV C	

DWG. NO. SU-1010-1713  
REV. SH. C 1

Officially Released to the LBNL Document Control Center  
Released: March 29th, 2019 DCC Auth Key: WPLU4x2ZPV