



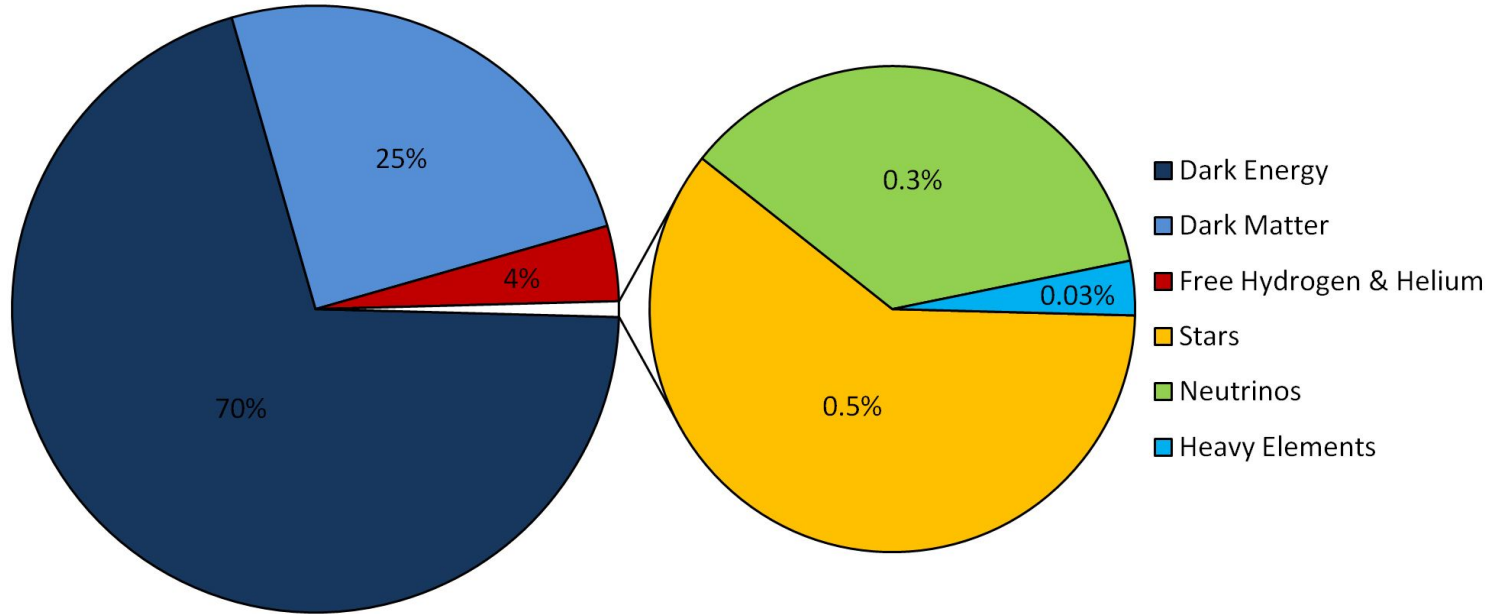
Teaching Machines to “See” Diffuse Galaxies

Name: Caleb Levy

Advisor: Alex Drlica-Wagner

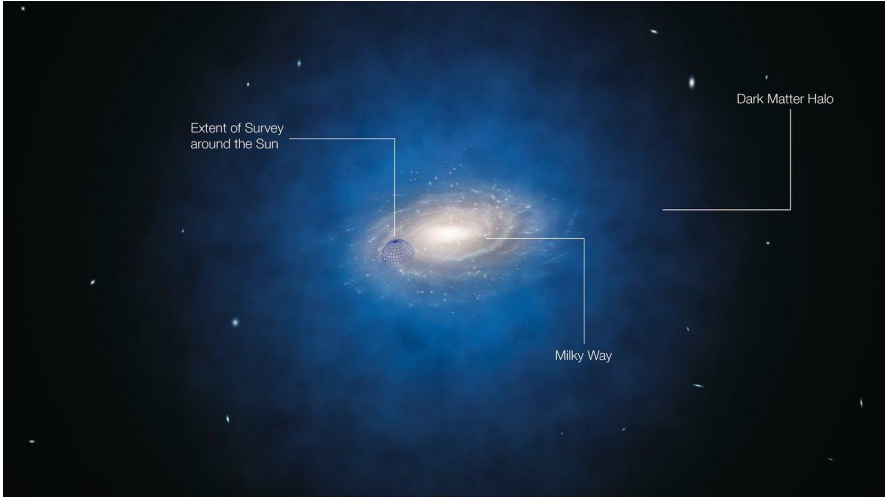
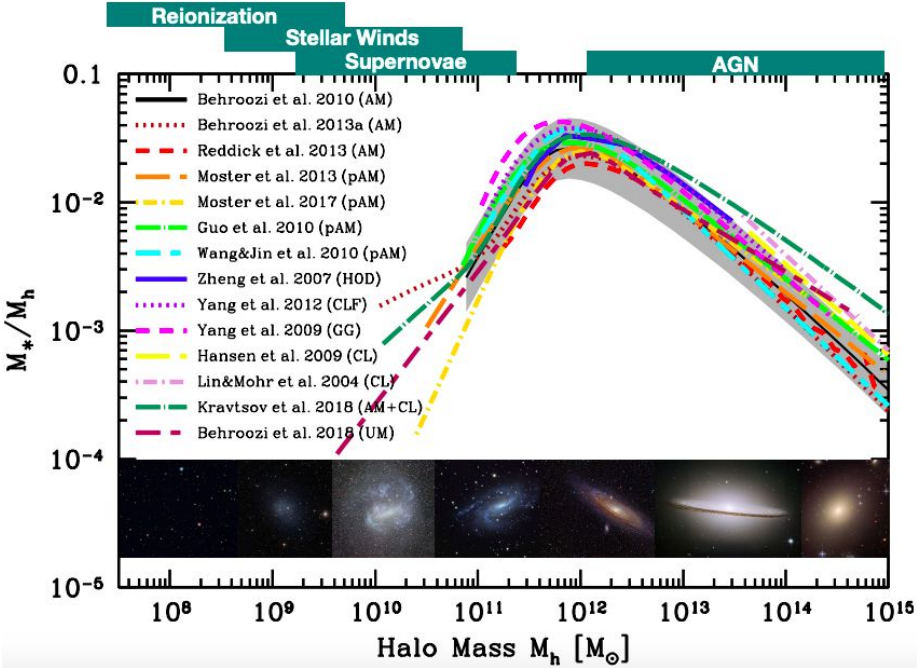
5 minutes, 5 slides

Background

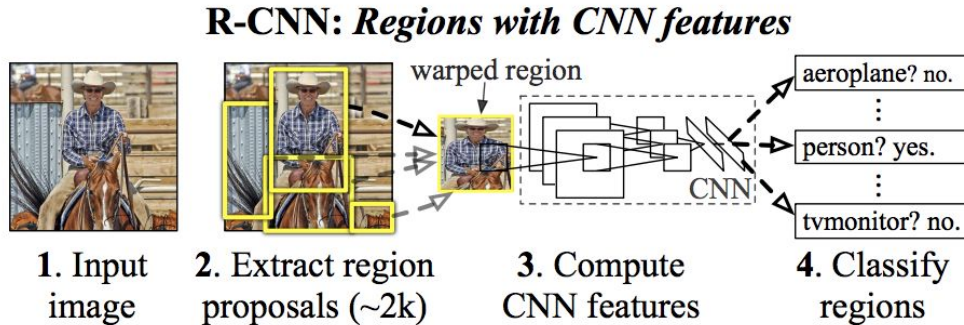


- **Dark Matter makes up most of the matter in the universe.**
- **But we know almost nothing about it!**
- **How can we get a better picture of Dark Matter's role in the universe?**

Galaxy-Halo Connection



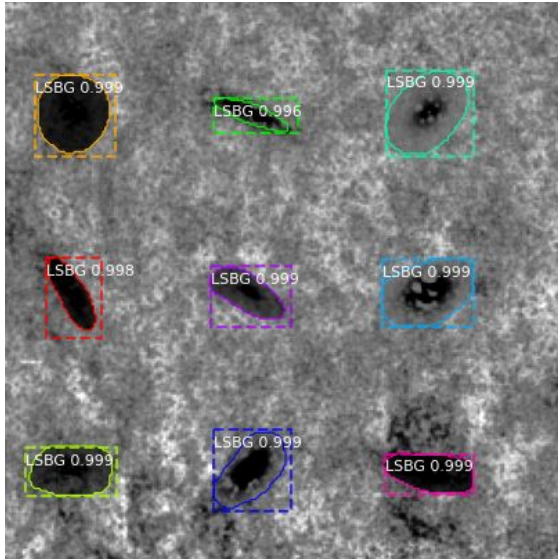
Computer Vision: Mask R-CNN



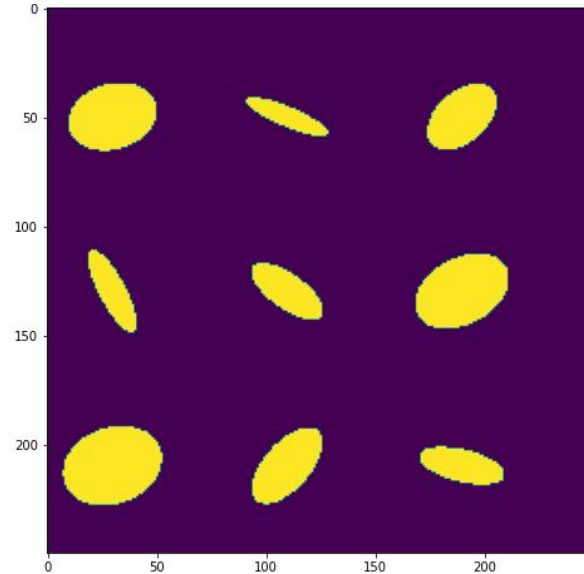
- **CNN: Convolutional Neural Network** → Extracts Local Features
- **R-CNN: Region-based CNN** → Puts boxes around objects
- **Mask R-CNN** → Places mask around objects

Project for Summer

- Create model trained on simulated LSBGs
- Compare detection sensitivity to standard algorithms
- Use model to detect new LSBGs in DES data!



DES Image



Position of Simulated LSBGs