

# TMS Schedule News

Tom LeCompte

*Argonne National Laboratory*

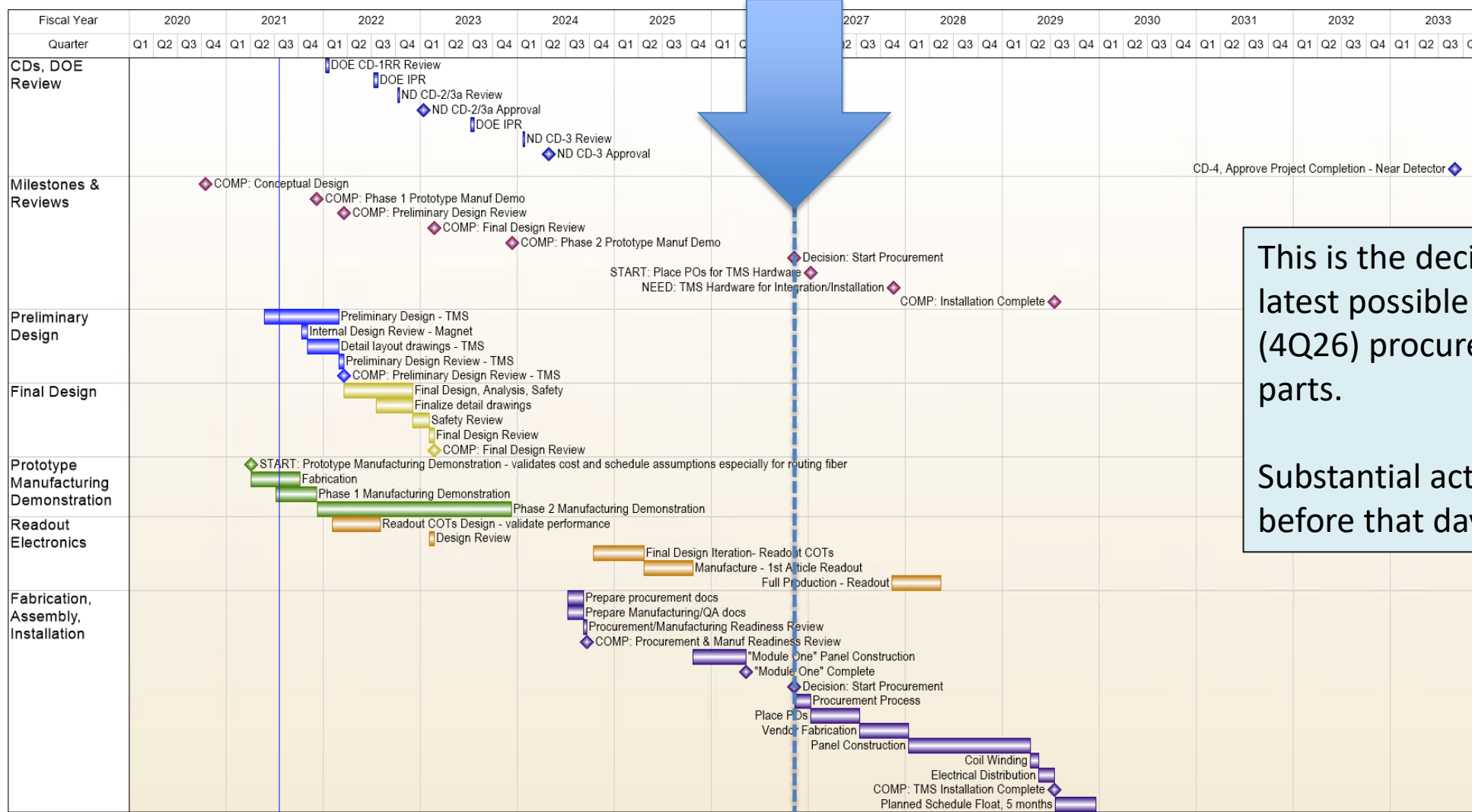


U.S. DEPARTMENT OF  
**ENERGY**

Office of  
Science



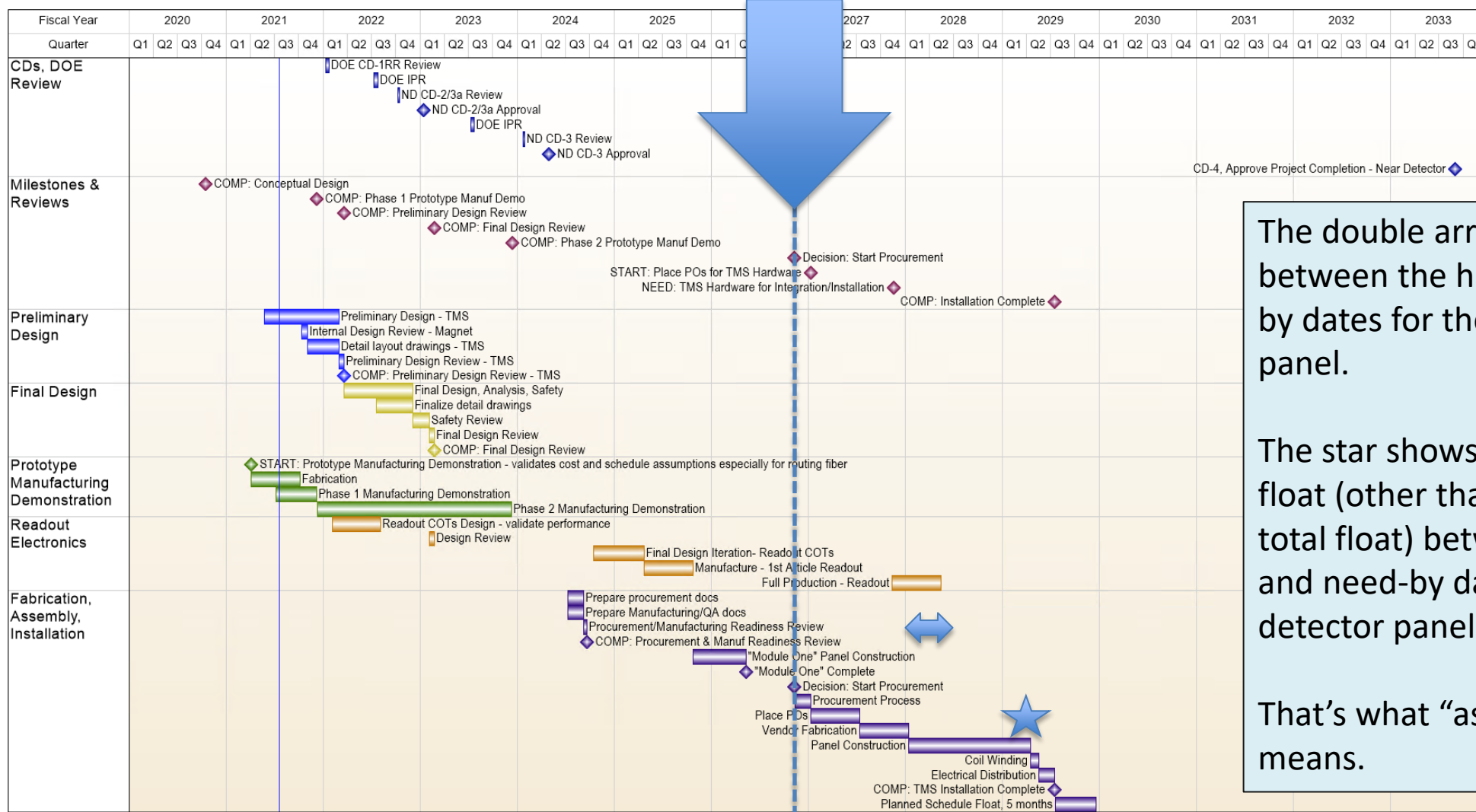
# The Ancient (20 April) Schedule Features (I)



This is the decision date – the latest possible date to start (4Q26) procurement of TMS parts.

Substantial activities occur before that day.

# Ancient Schedule Features (II)



The double arrow shows the float between the have-by and need-by dates for the first detector panel.

The star shows that there is no float (other than the 5 months total float) between the have-by and need-by dates for the last detector panel.

That's what "as late as possible" means.

## Schedule Evolution

- NSCF schedule continues to solidify
- Fabrice Matichard has done an amazing job of putting together an installation schedule
  - Our first opportunity to mate the TMS and Installation schedule was Thursday
  - Installation has a lot going on at once. Delays in one subsystem can easily spread to another
    - Adequate float is critical
- The TMS last layer now needs to be at the Near Hall in 1Q28.
  - Previously it was 1Q29.
  - This is ~18 months earlier (5 months float + different months in 1Q) than we planned in April
  - This is a **good thing**: we start science sooner

## Implications of -18 months

- To finish 18 months sooner, we need to start 18 months sooner
  - But wouldn't adding a 4<sup>th</sup> construction site help? That should save 7 months.
  - When considering end effects, 7 months is more like 4 or 5.
  - Cutting into float would be a bad idea, given the complexity of the Installation schedule
- This moves the go/no-go date from 2026 into 2024 – a few months after CD-3 (authority to spend money)
- We no longer have 9 months of slack between Module One and main production.
  - It's still in the schedule with a few months slack, but I think if we were to execute the present schedule, we probably wouldn't wait and would just start main production early

## One Unrelated Question

- Do we have any use for an *unenclosed* staging area at the Near Site?
  - Before I say “no”, speak now!