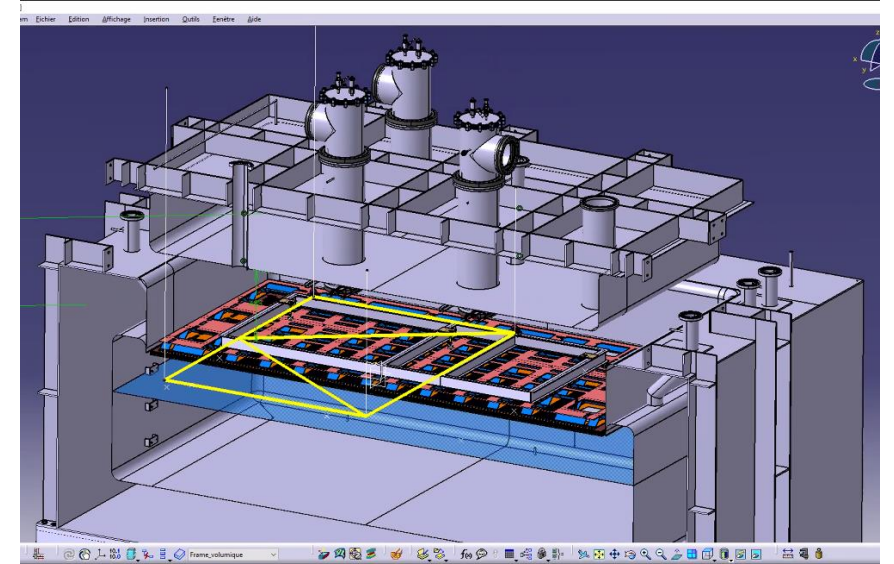
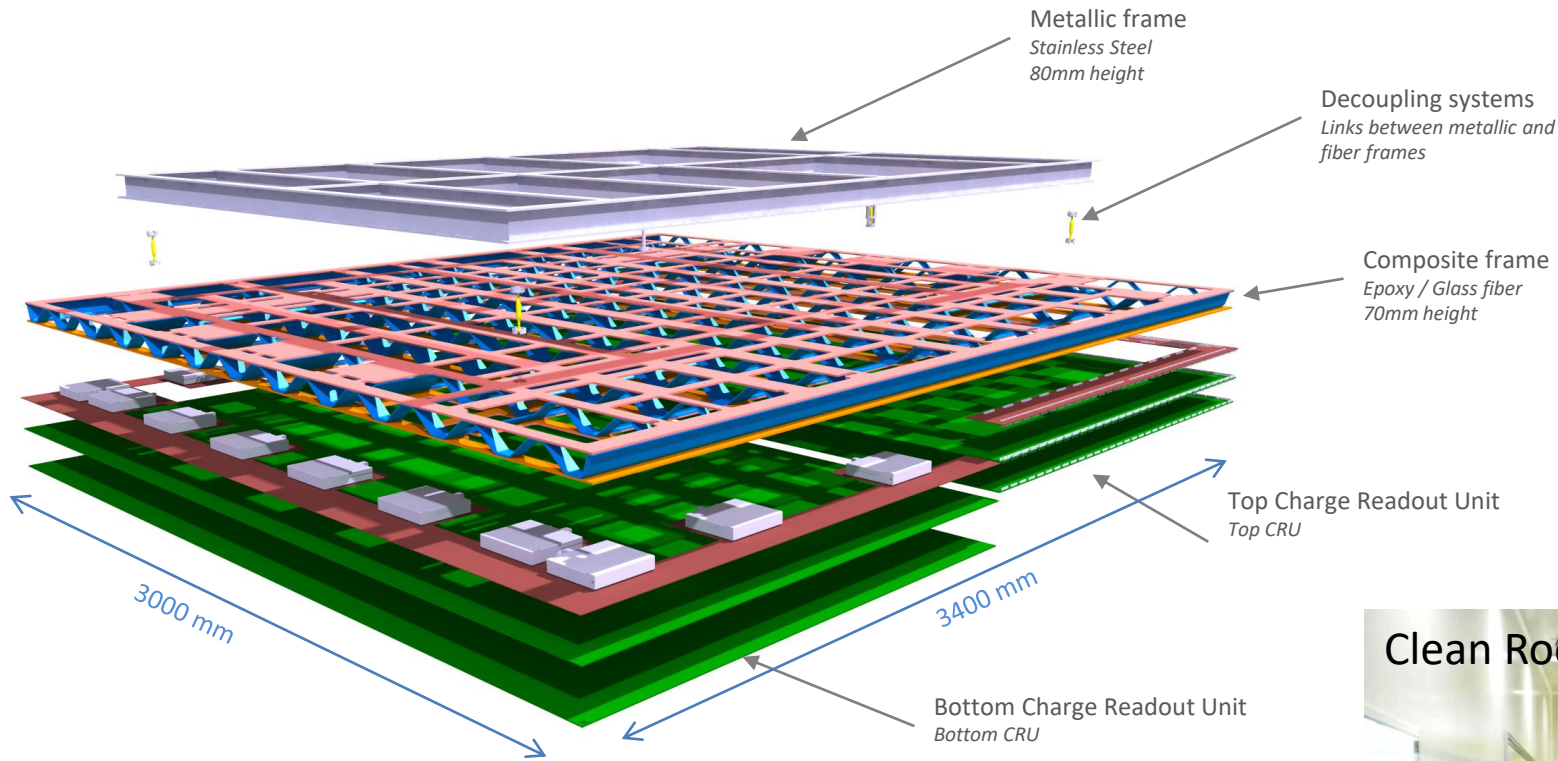


# Status of preparation for first CRP in Cold Box



## First CRP procurement and production status:

- ❑ **Material for clean room** (for gluing and for preparing the place)
  - Optical table extension plates arrive on 20/05 => to be mounted on the table beginning of June or when the CR185 is made available
  - Cleanup of the CR185 => **June**
  - Material for PCB gluing (epoxy and bags) to be ordered in June => **ready in July**
  - Gluing tooling (pumps, etc...) already available
  - Silver printing system made available by PCB workshop

### Anode + Adapter boards:

- ❑ **Anode PCBs** => production going on at ELTOS, expect all anodes at CERN **by end of July**
- ❑ **Adapter boards:** design finalisation; production expected in June with component soldering in July
  - ❑ Gerber files: at BNL (16 total) => **mid July**;
  - ❑ Production at CERN (16 total; may be replicated twice to allow full top + full bottom) => **July**
- ❑ **Connectors, pin sockets, capacitors (ordered already), resistors** => procured ; will be sent to CERN soon => **soldering end of July**

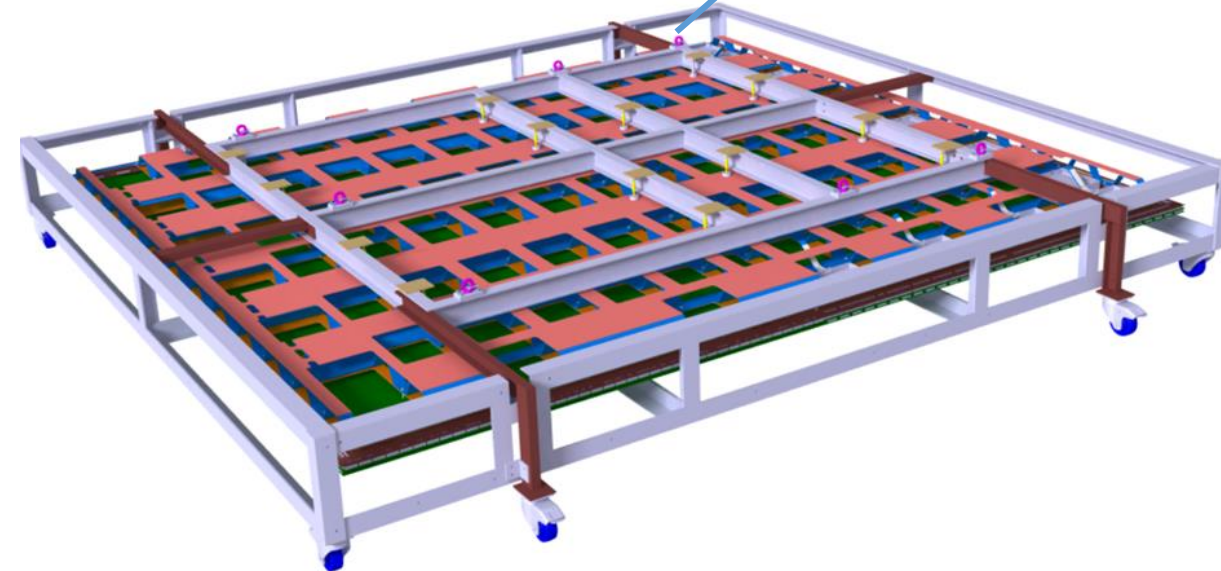
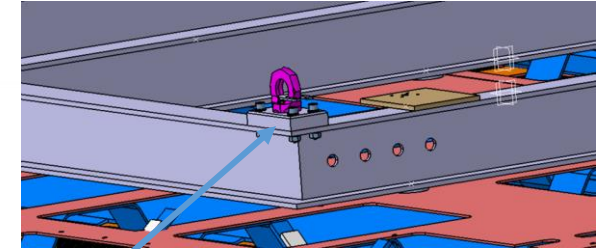
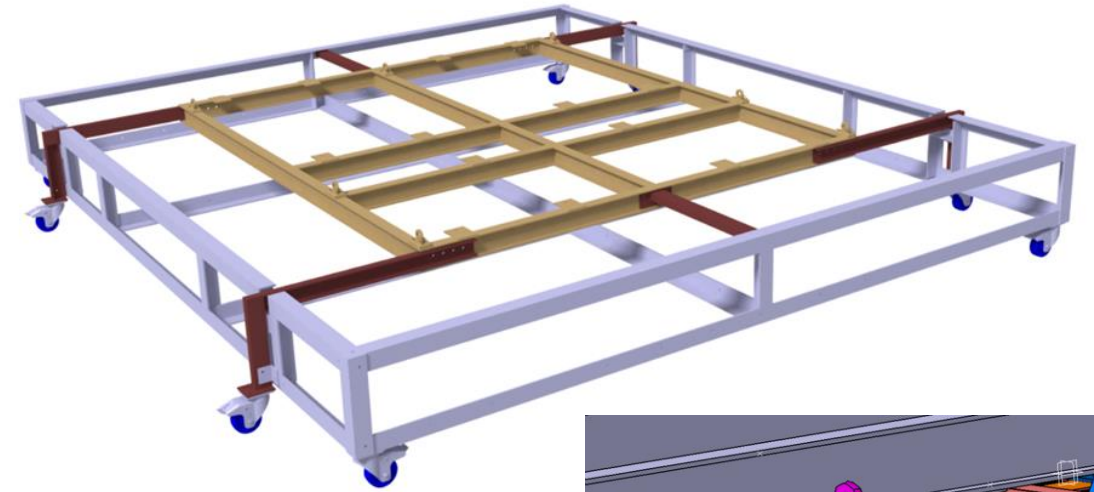
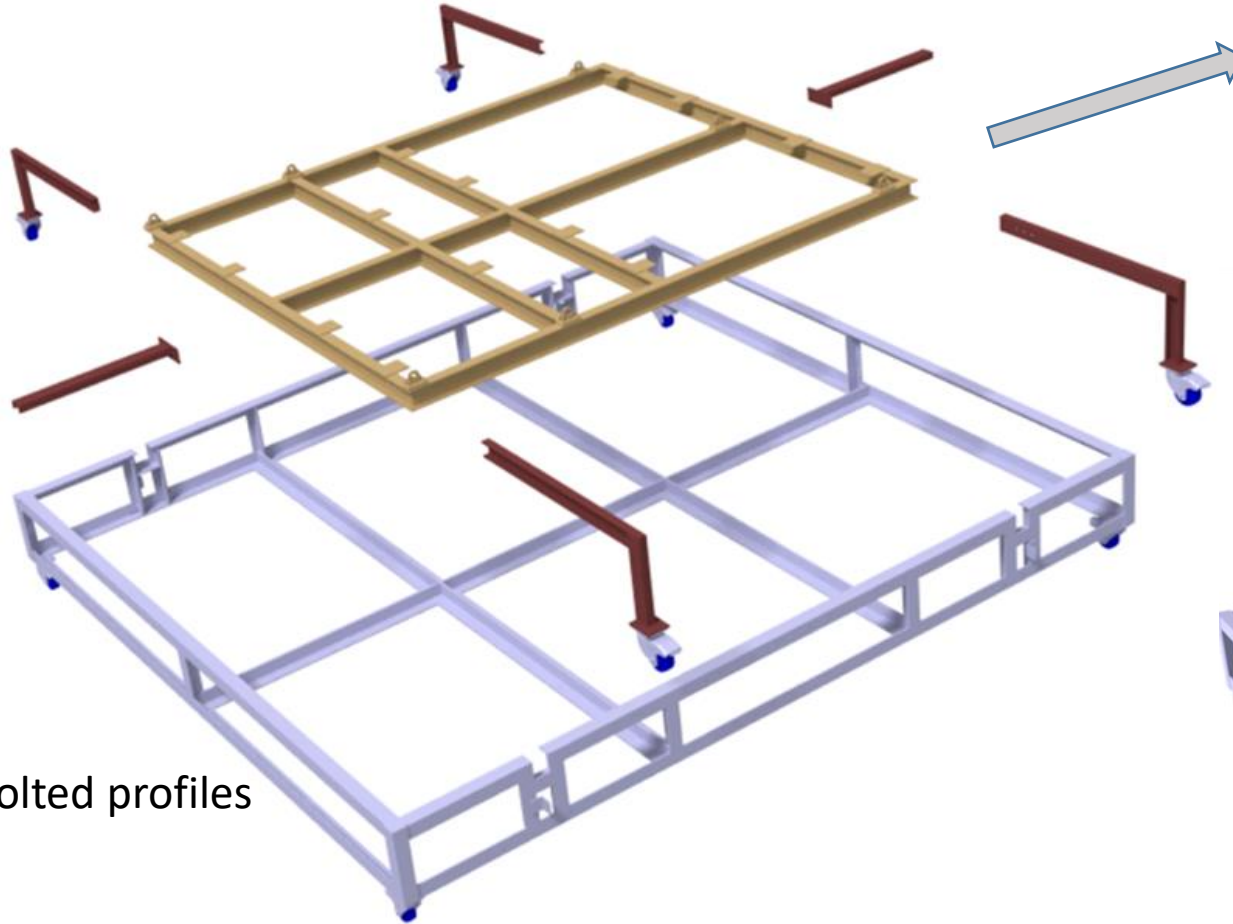
### Mechanical components:

- ❑ **Composite frame** => the company for composite frame sent a preliminary quote => design is finalised for a production of the frame by **beginning of August => the company wait feedbacks from subcontractors for machining the frame**
- ❑ **Support axes and spacers** => Procurement and production started; axes ordered and received, spacers to procure **by mid-July**
- ❑ **Decoupling system** => all material is at LAPP; machining and assembly to be done **by beginning of July**
  
- ❑ **Metallic frame** => design has been finalised based on the composite frame choice => the order is sent; to be received end of **June**
- ❑ **Transport box** => design is completed, procurement of parts started mid June



## Transport box:

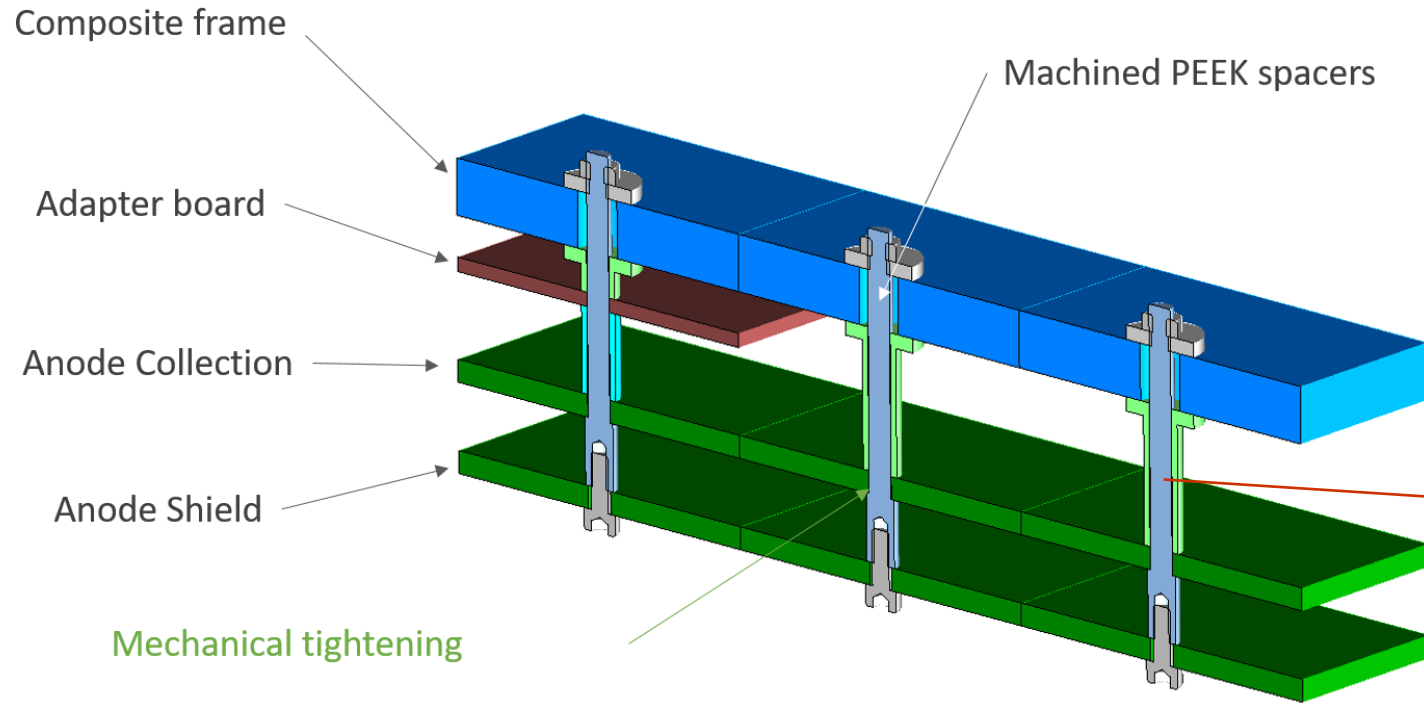
Design completed (Dorian Ferrando-Flores) on June 16th  
=> All parts have been ordered



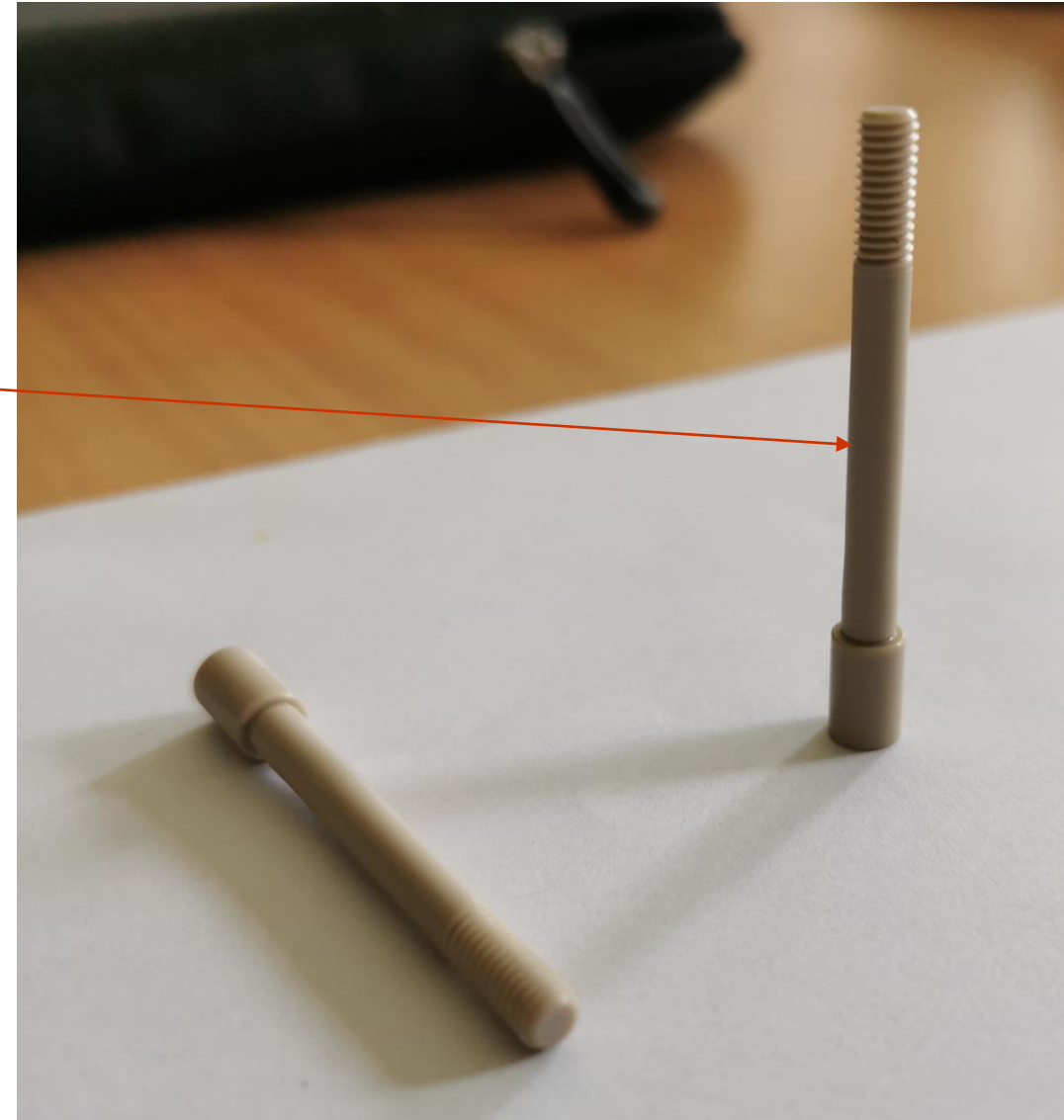
Bolted profiles

The metallic frame is embedded in the transport structure:  
reception at CERN on June 29th

# Peek spacers: 130 axes produced and received (June 22<sup>nd</sup>)



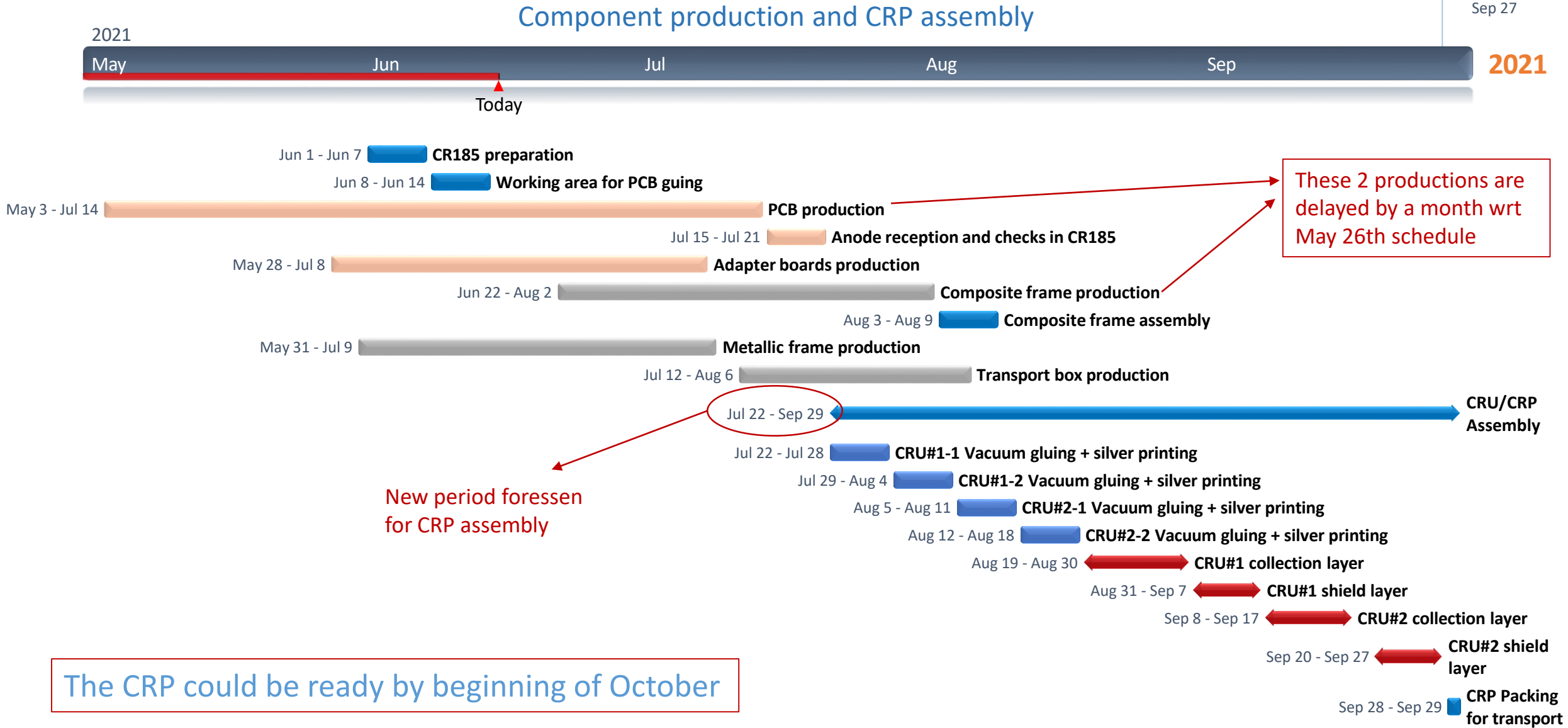
The spacers, the screws and washers are being ordered:  
=> To be received mid July



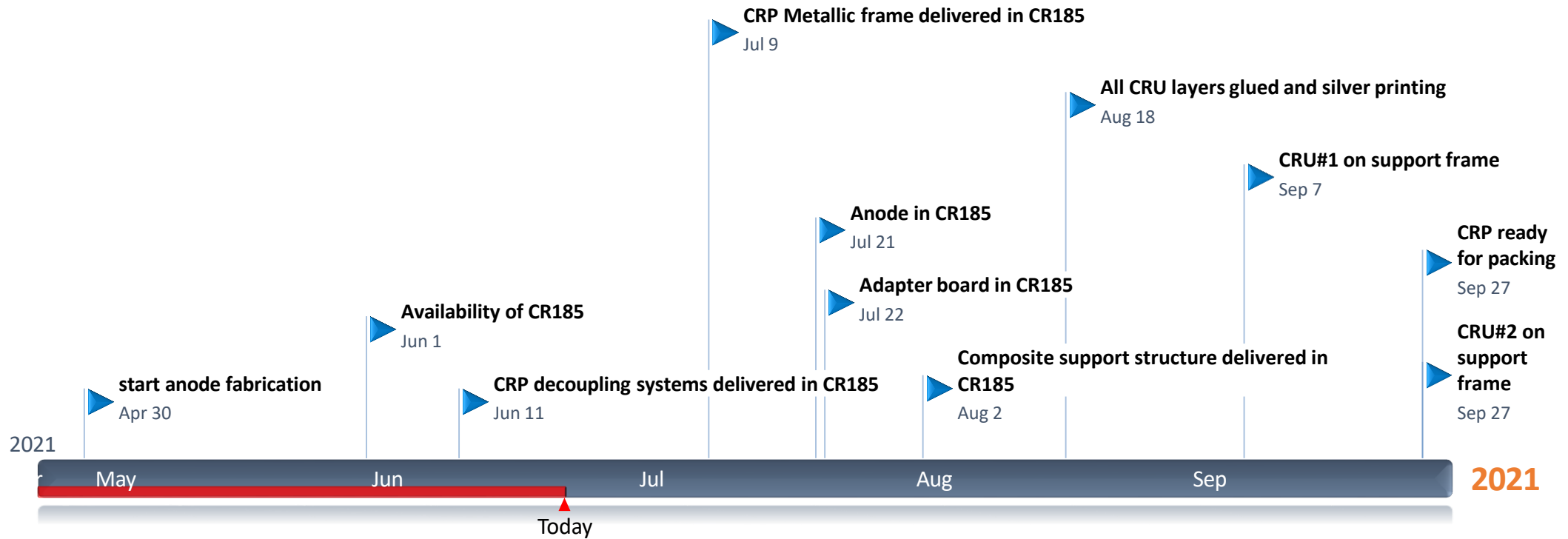
# Schedule for first CRP construction:

Updated: June 15th 2021

CRP ready for packing  
Sep 27



# Milestones for first CRP construction: June 15th 2021



Cold box and NP02 schedule as presented in April 2021:

Cf: Filippo's presentation

