

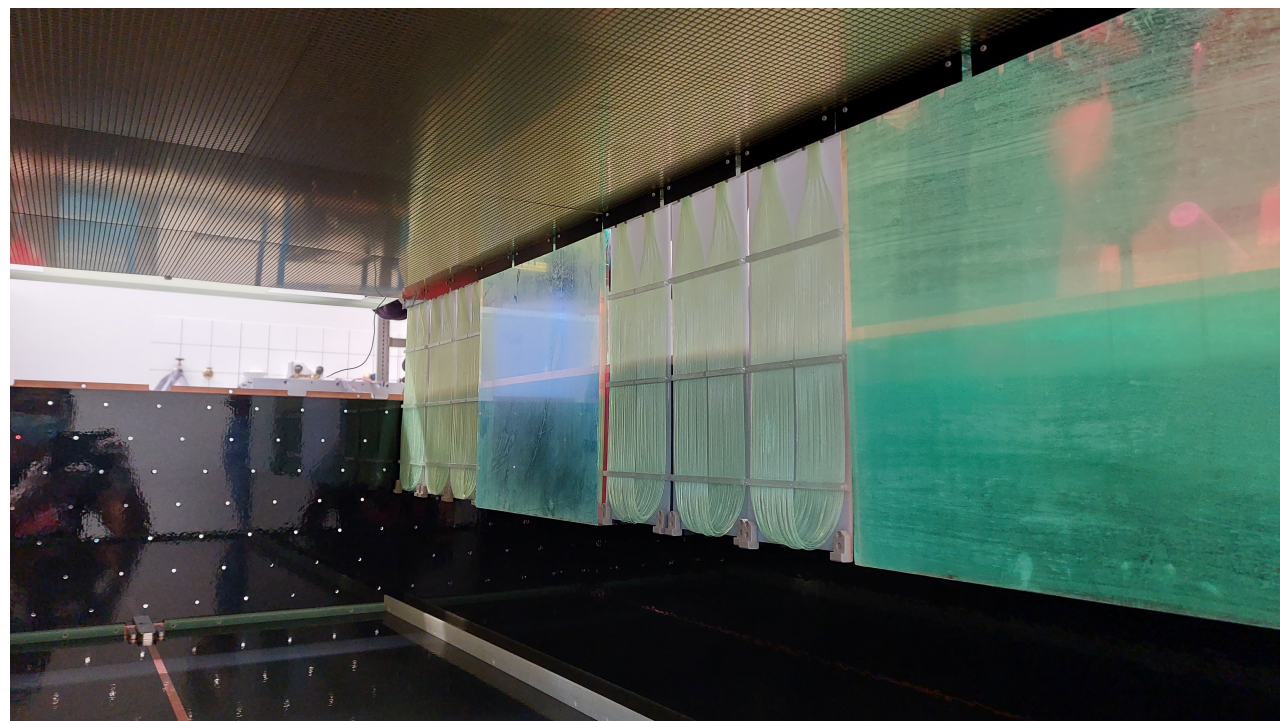
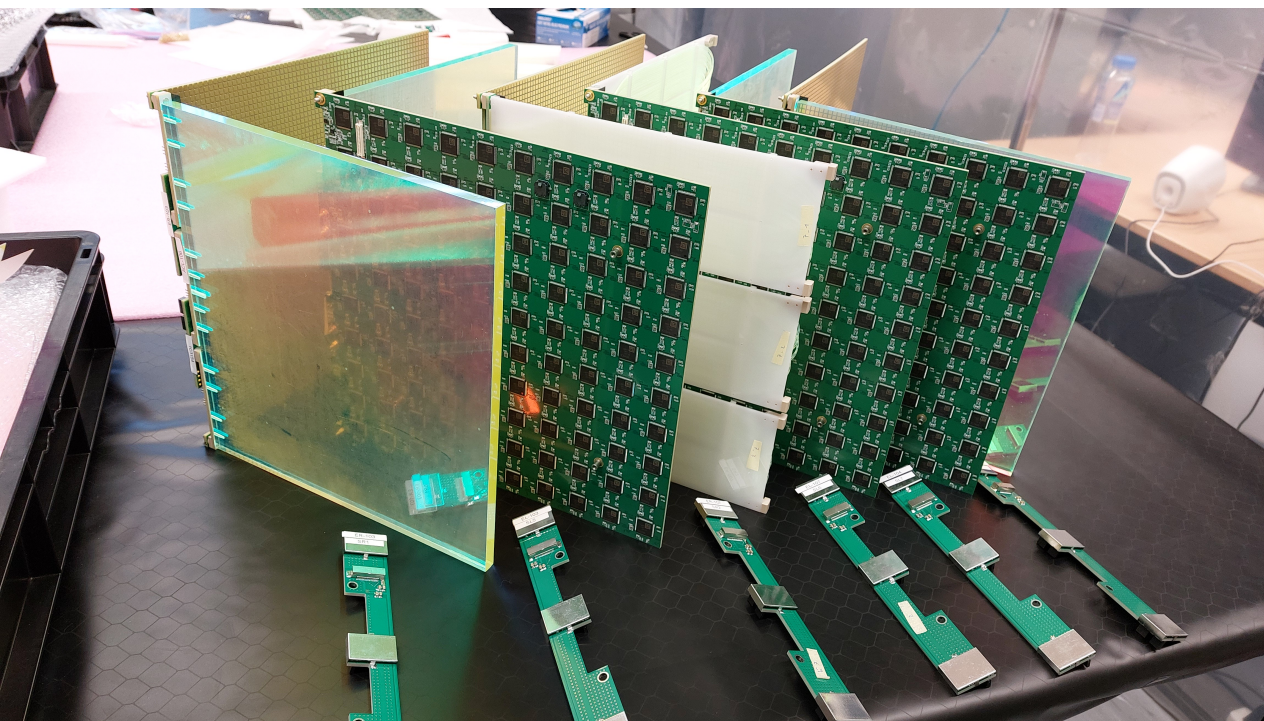
# Module 1 assembly photos

University of Bern

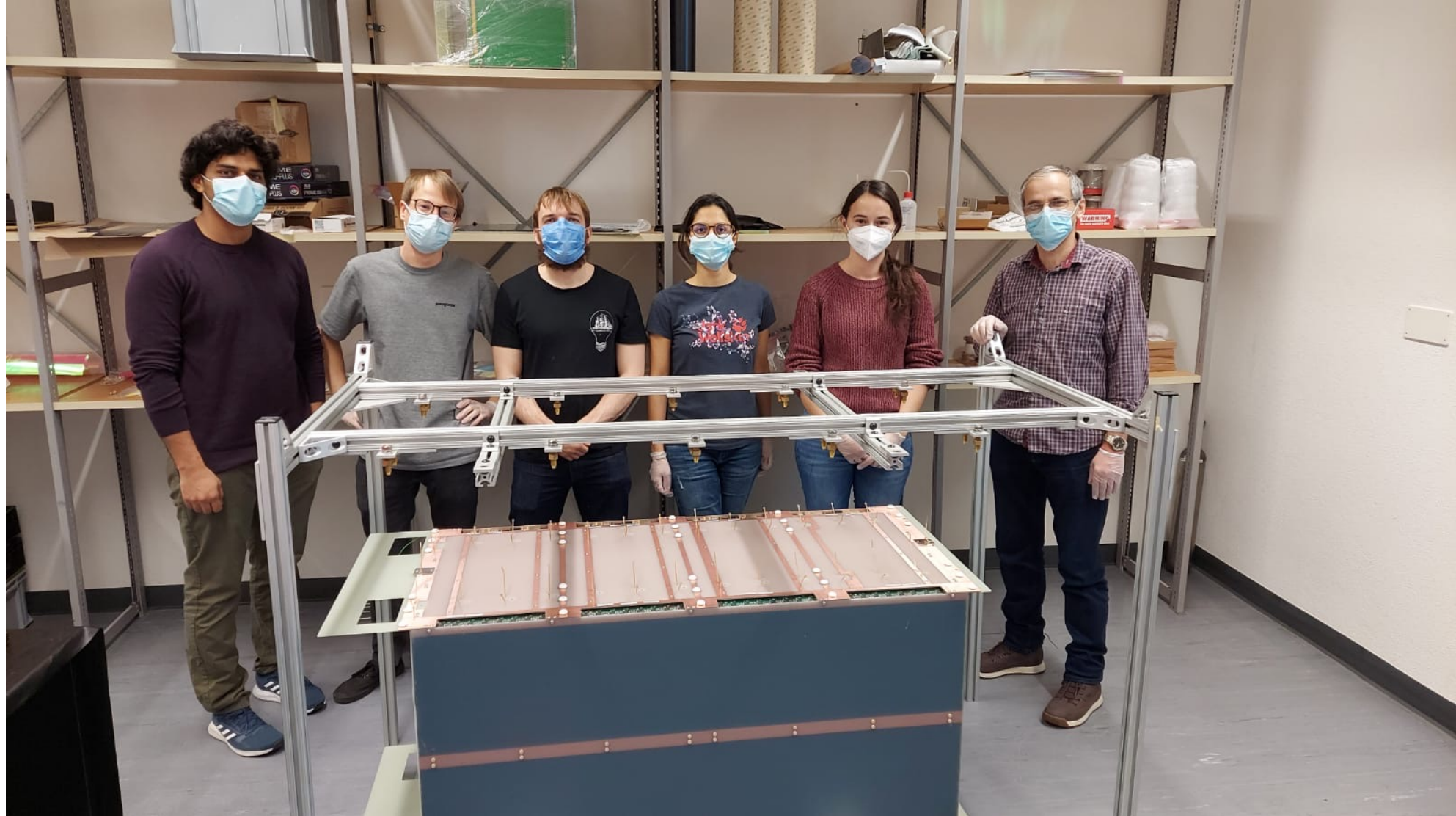
Saba Parsa on behalf of the Bern team

20 January 2022

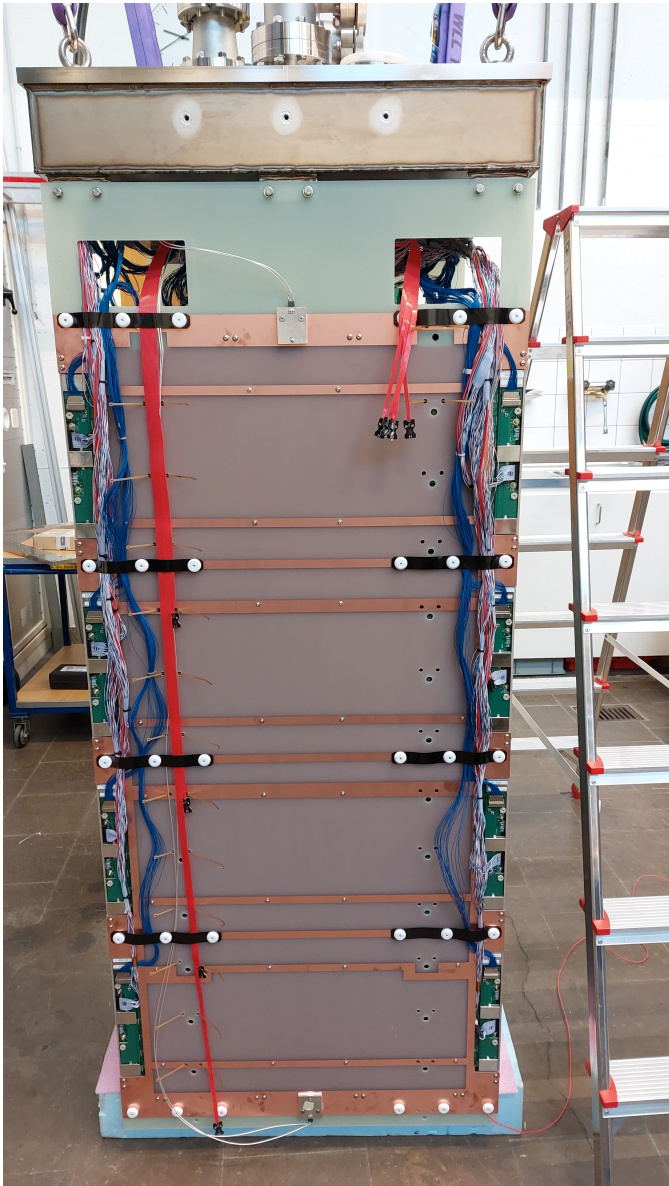
# Assembly of TPC2











TPC1 side



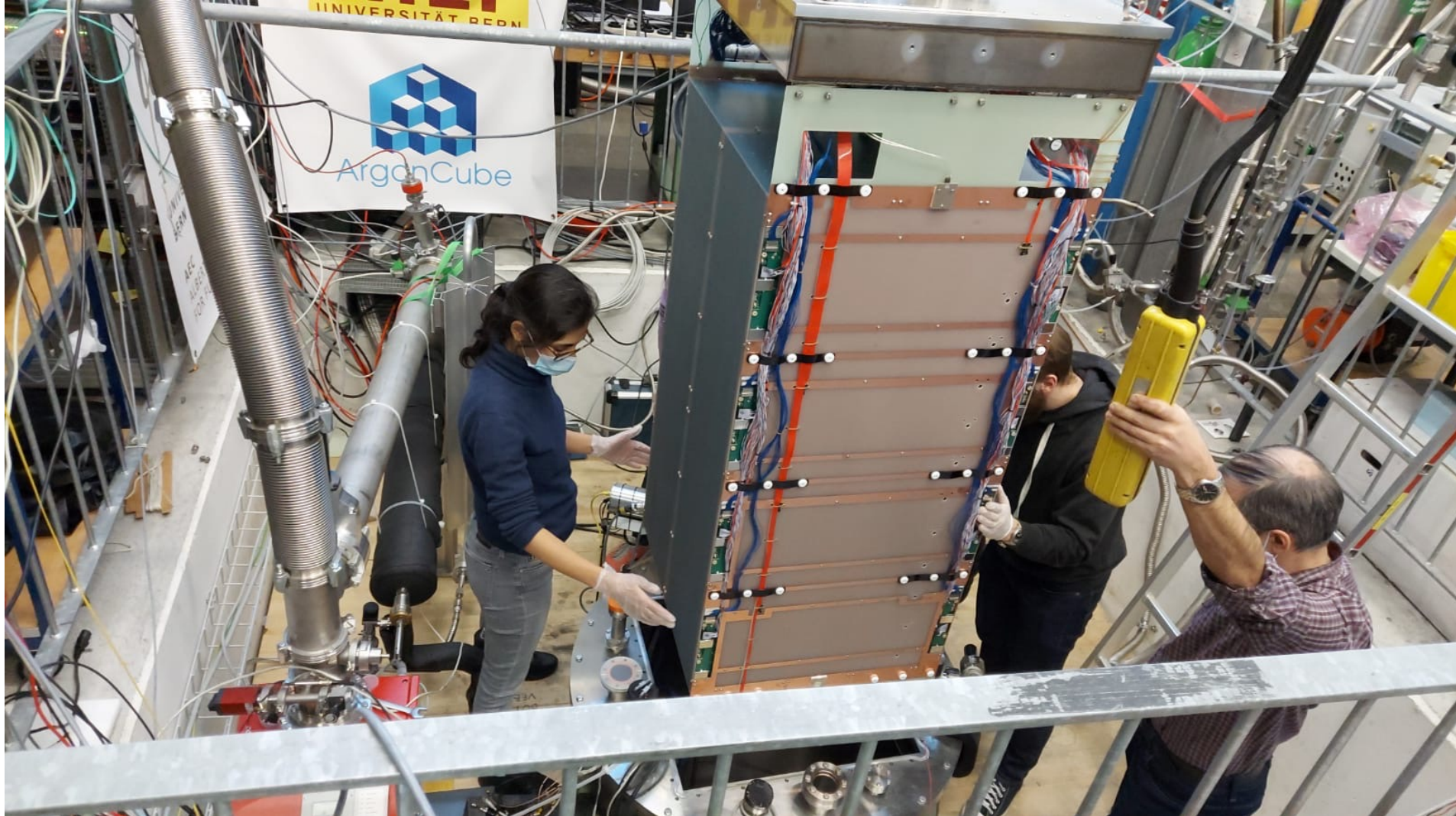
TPC2 side



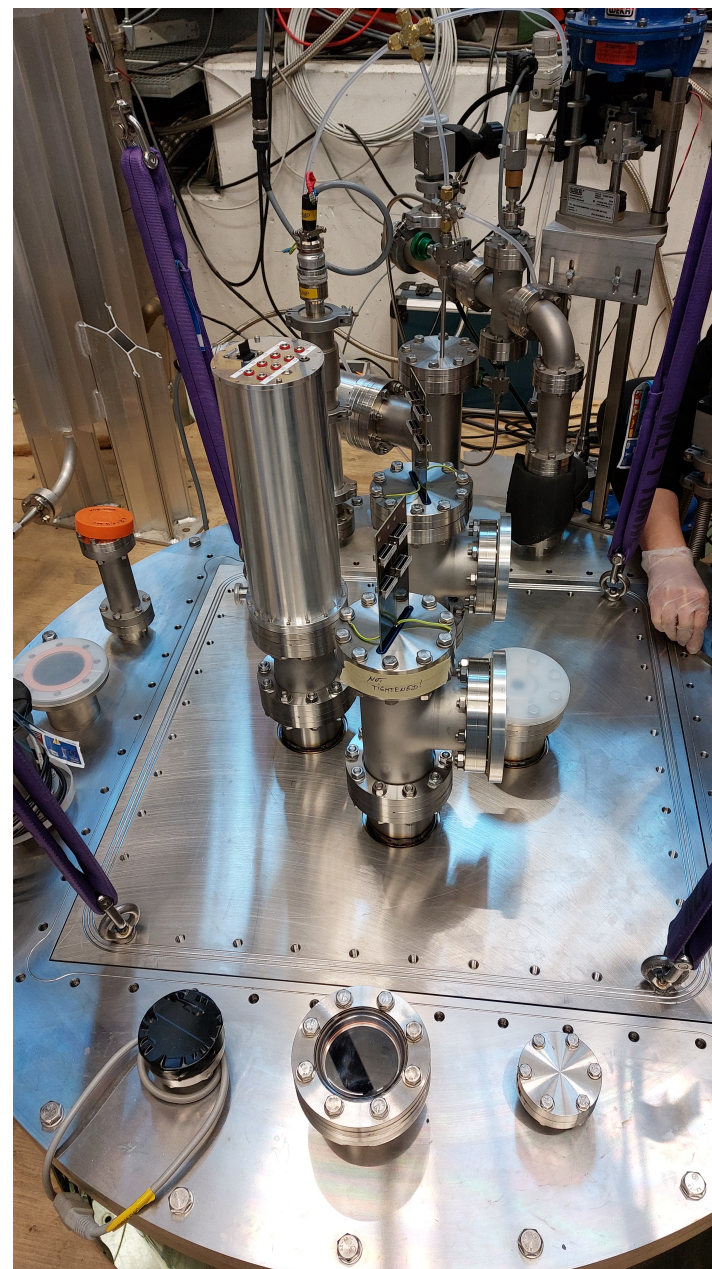
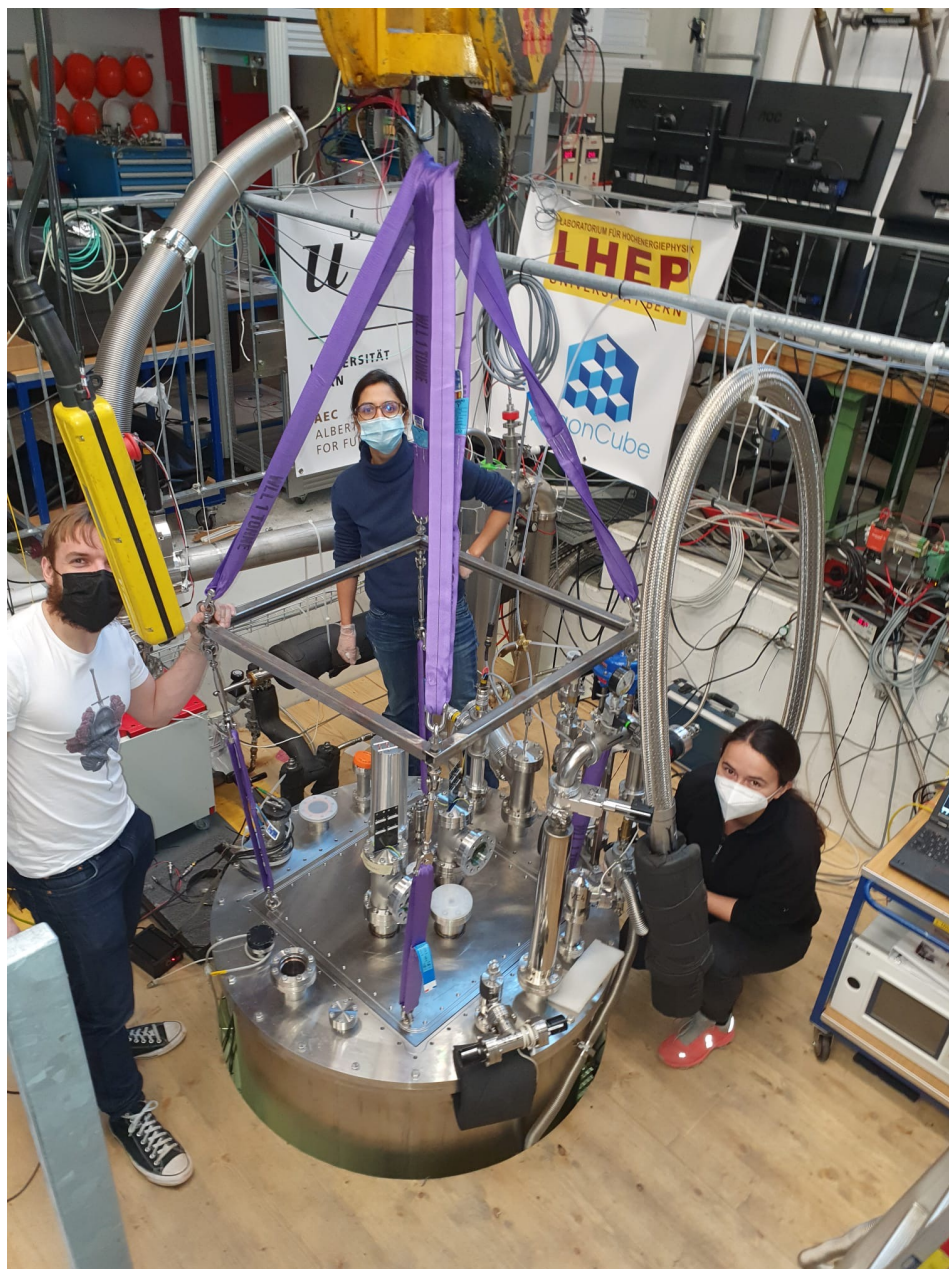
mod1 with the sleeve



# Insertion of Mod-1 into the Cryostat





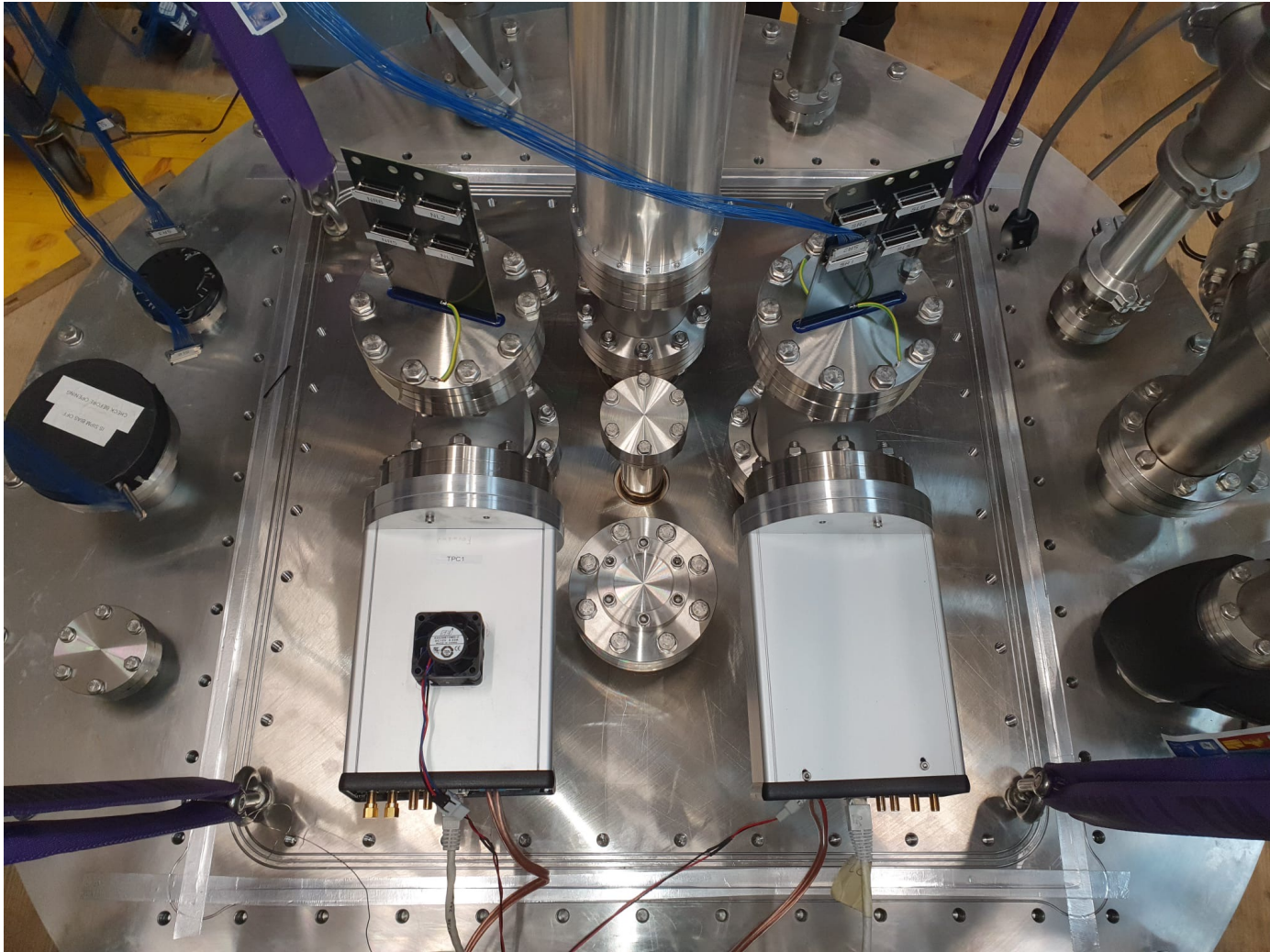




# Shifter desk ready

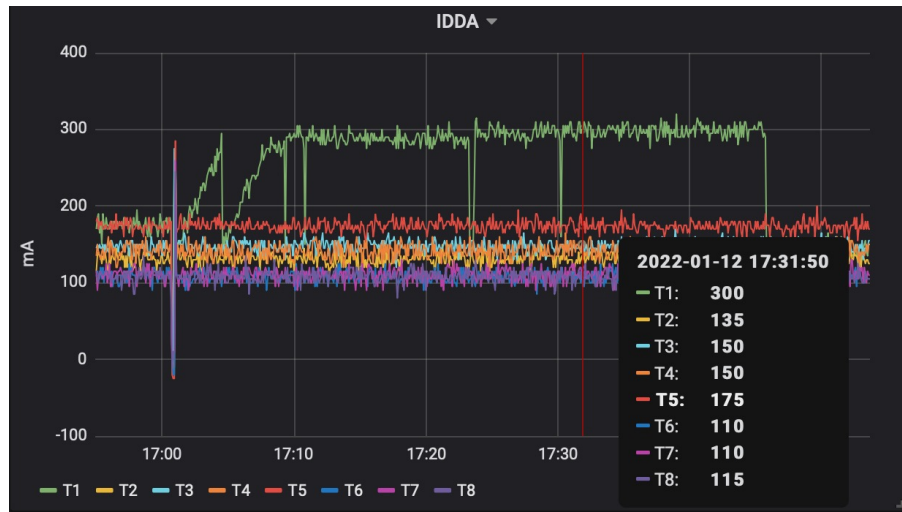
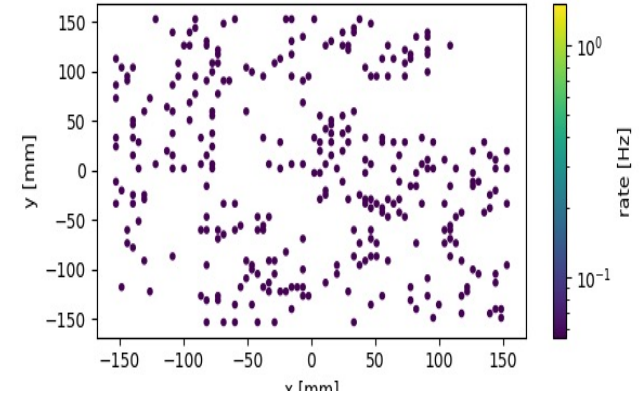
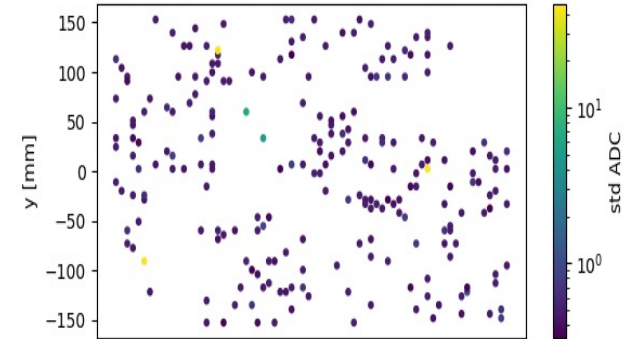
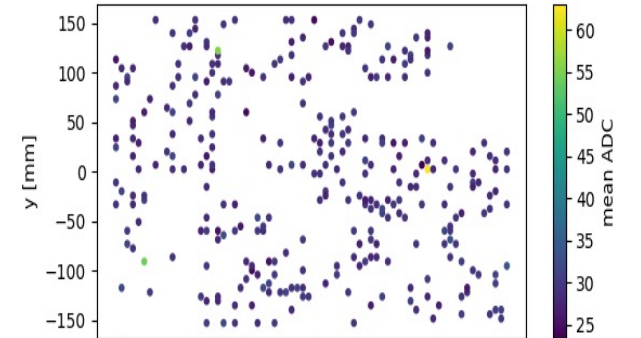
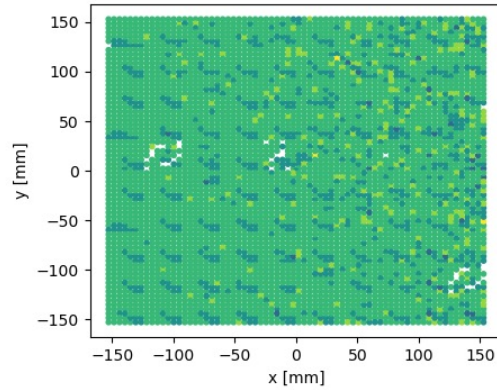
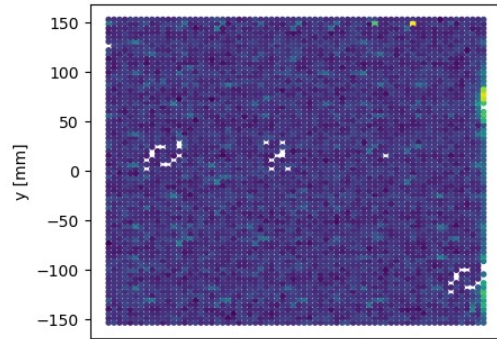
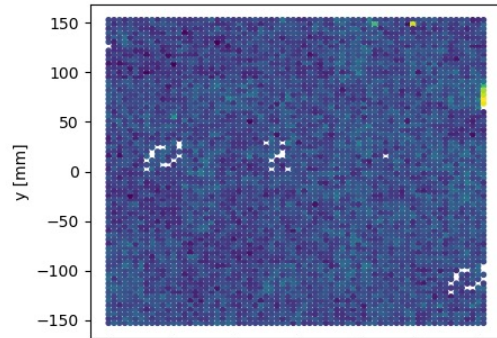
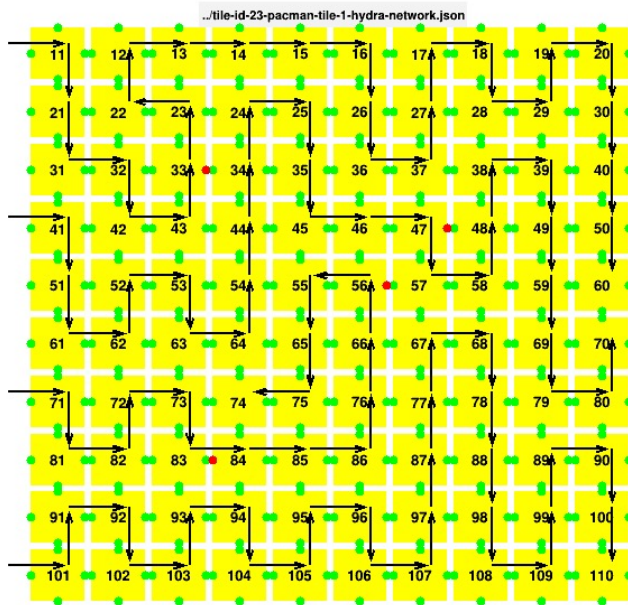


# Charge readout checkout



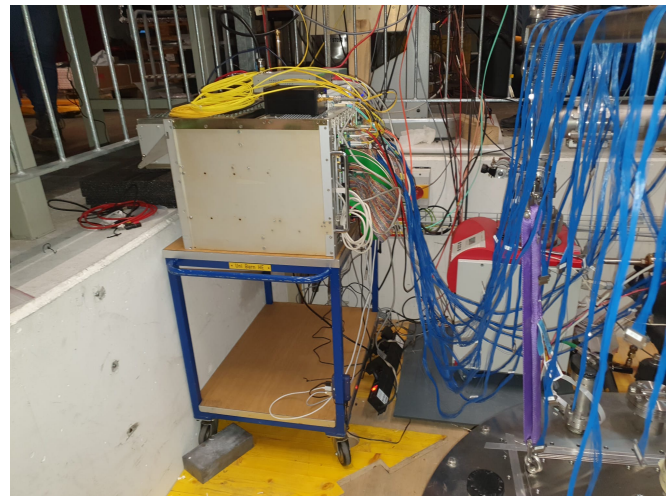


# Charge readout checkout

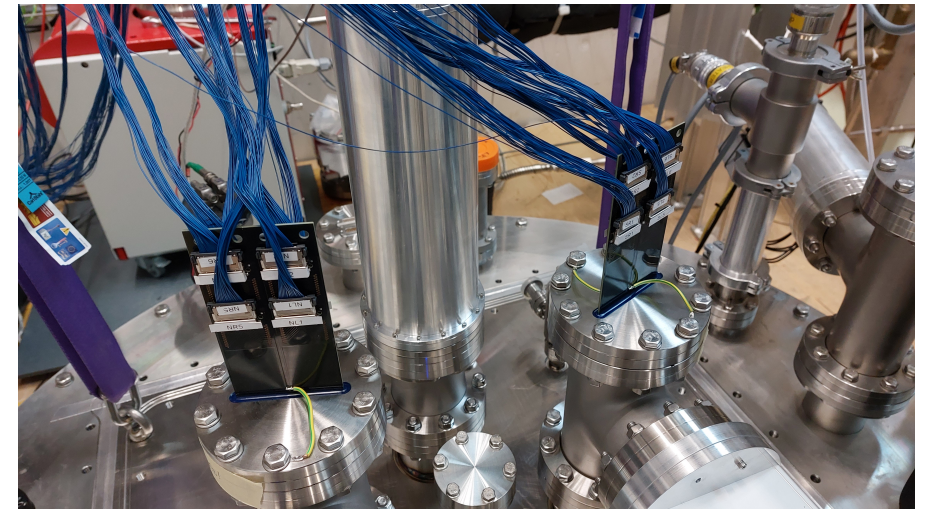
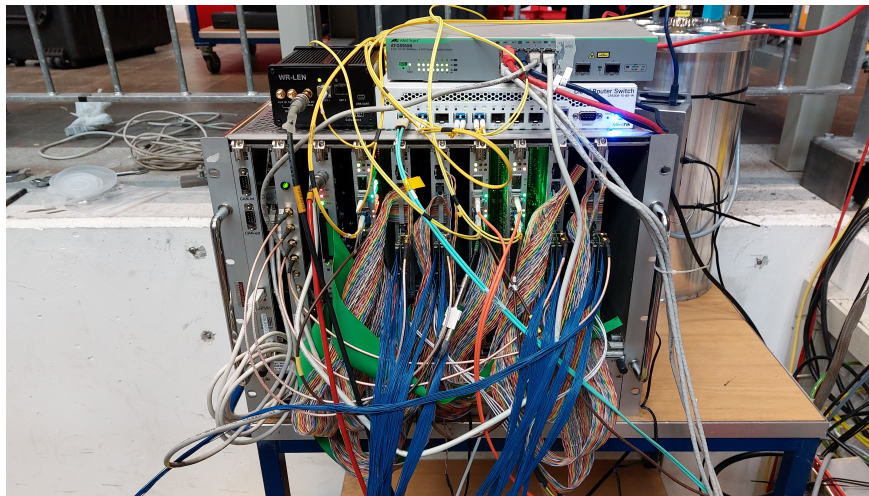




# Light readout checkout



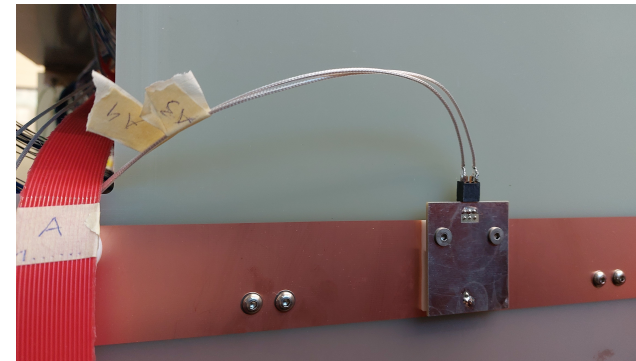
Light readout VME rack on the platform



Light feedthroughs with all cables connected



# Light readout checkout



- All cables are connected
- HV on all channels is properly set
- All channels were checked with LED inside the cryostat
- We identified One nonresponding channel
- 4 new LEDs on the module with blue/UV light were checked, all working

