

# Field Cage Endwall Work Status Update

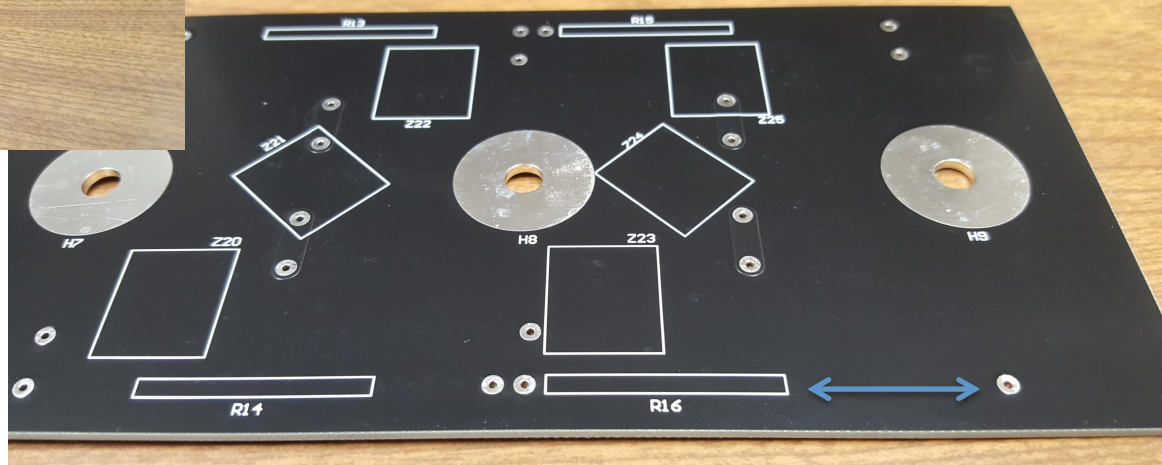
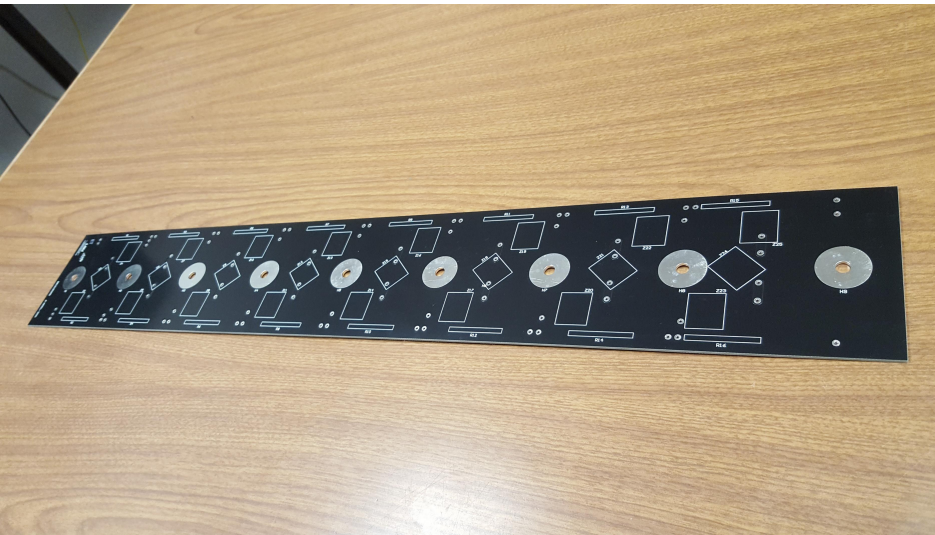
Jill Juneau, Thomas Kutter, Marcus Nauman, Trang  
Huynh, Tyler Stokes, Raenessa Walker

LSU

Aug. 24, 2021

# Resistive Divider Boards

- Made minor modification to layout for subset of RDBs to accommodate SS bar constraints
- Ordered and received blank boards

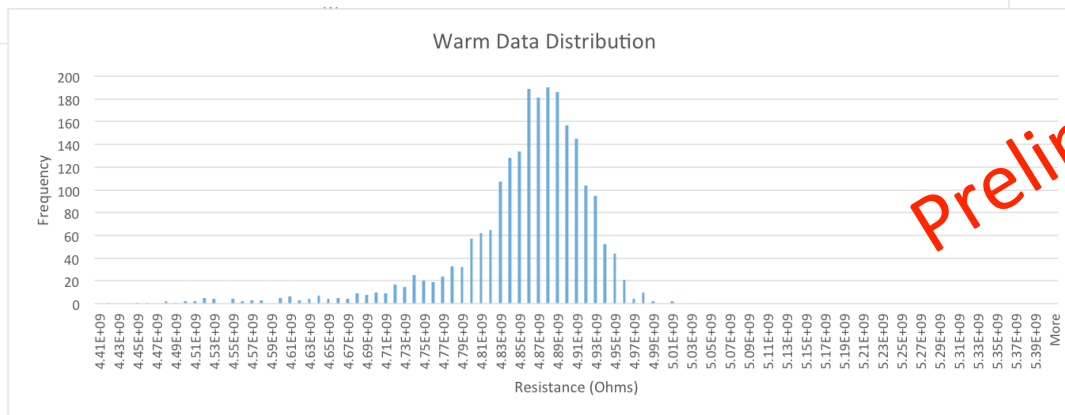
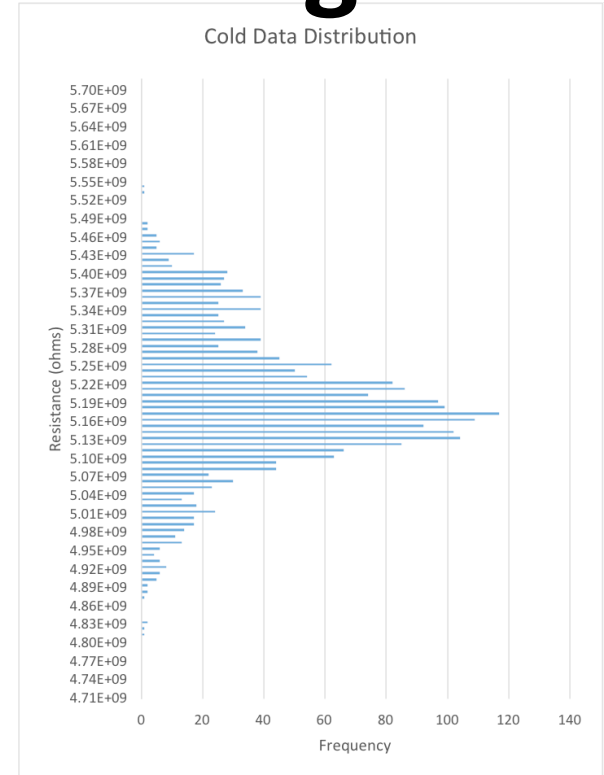
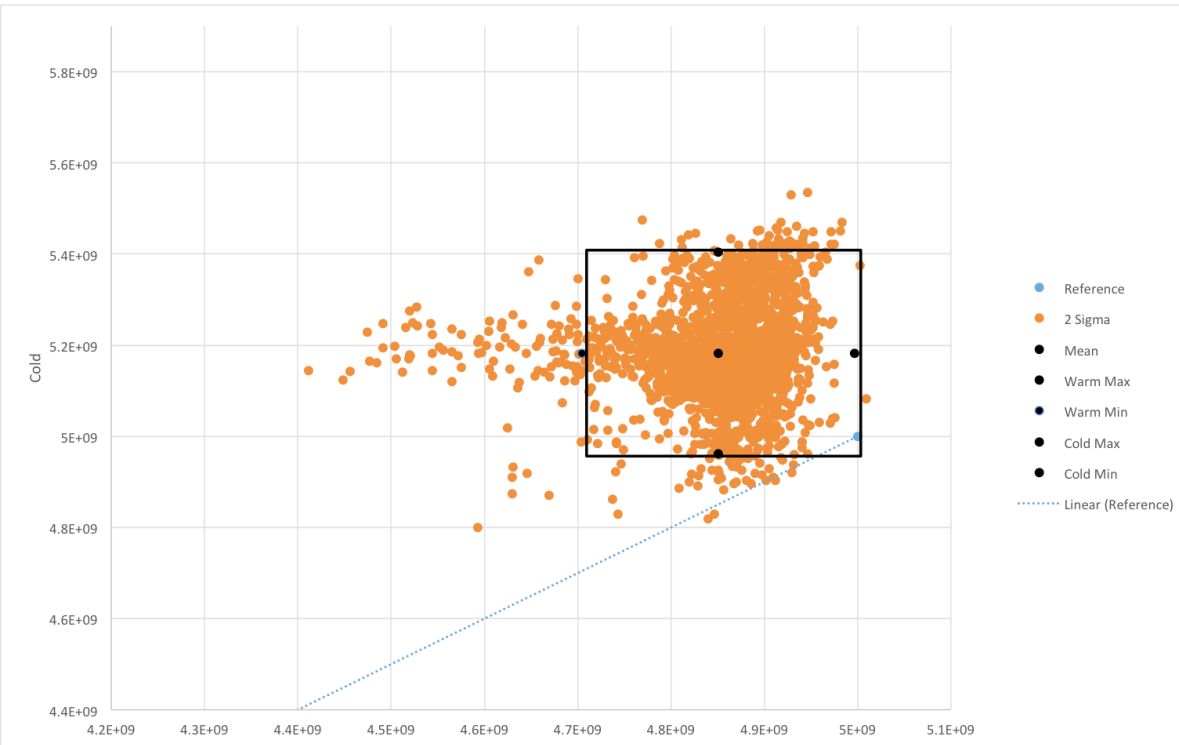


Increased space to accommodate mechanical constraints

# Resistive Divider Boards

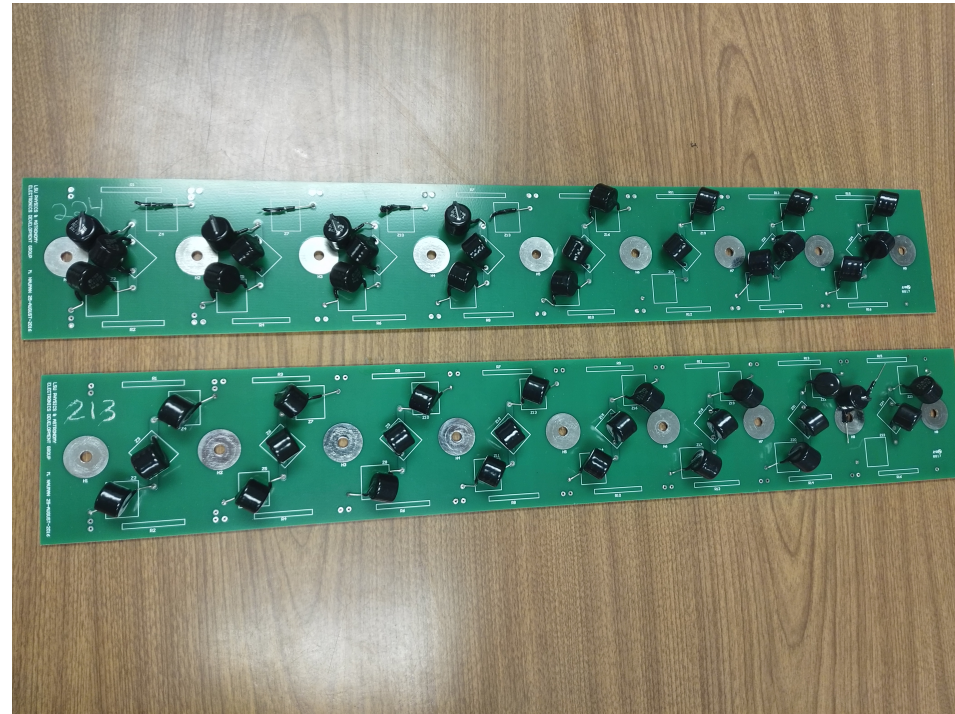
- Reactivated component test stand, trained new student workers and performed testing over summer
  - Received and tested 2200 5 GOhm resistors
  - Still awaiting delivery of MOVs (now expected for Oct./Nov.)
  - De-soldering of 1 G Ohm resistors from ProtoDUNE1 RDBs nearly complete
- This week started soldering of 5 GOhm resistors

# 5 GOhm Resistor Testing



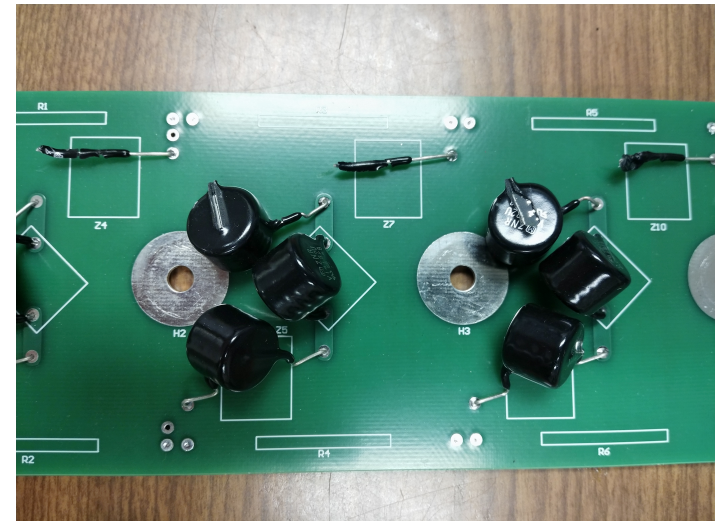
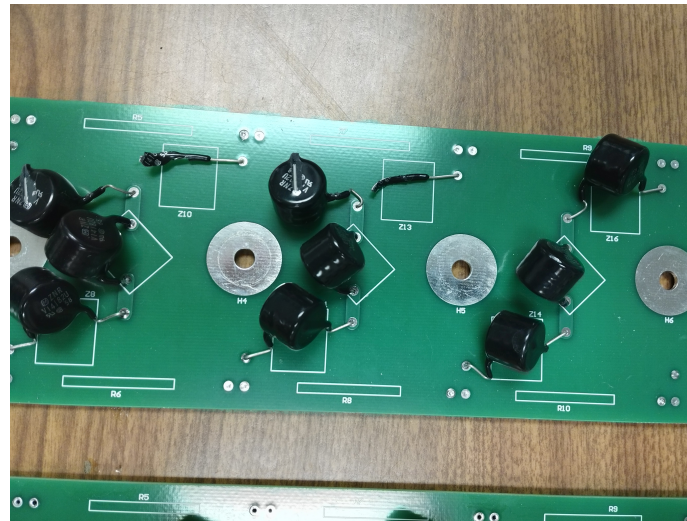
**Preliminary**

# ProtoDUNE I RDB Shipping Damage



Damaged boards located near top of box  
(external damage)

Components on  $\sim 5$  boards damaged

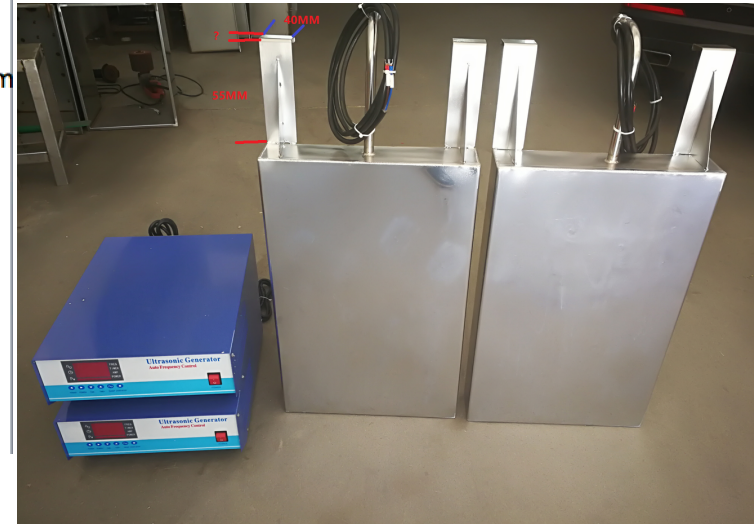
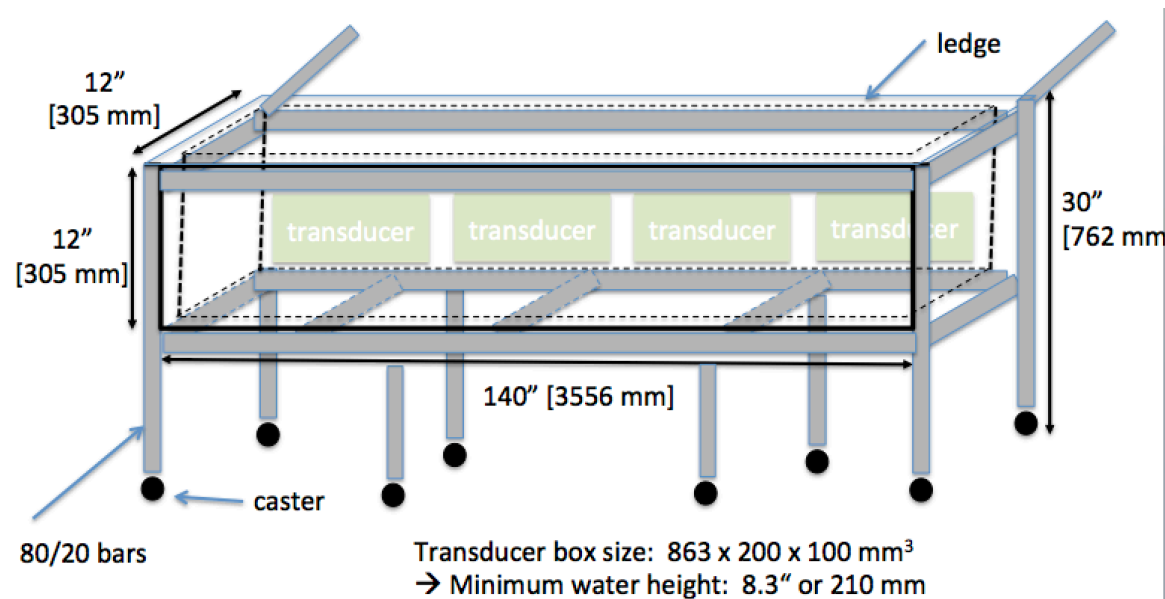


# Endwall FC Production

- Started to order and receive raw materials
- Starting manufacturing of parts for endwall panels
- Hanger structure
  - Obtained and reviewed drawing package
  - fully approved and ready to start production ?
- Endwall restraints
  - obtained drawing package
  - waiting for assembly drawing to list quantities
  - waiting for last issues to be sorted out

# Manufacturing, cleaning and QA tools

- Building large ultrasonic tank for cleaning of components, especially FRP box beams
- Parts identified and being ordered



# Manufacturing, cleaning and QA tools

- Additional profile bender nearly complete (to be shipped to CERN/SURF)
- QA/QC data base work appears to be somewhat on hold ?