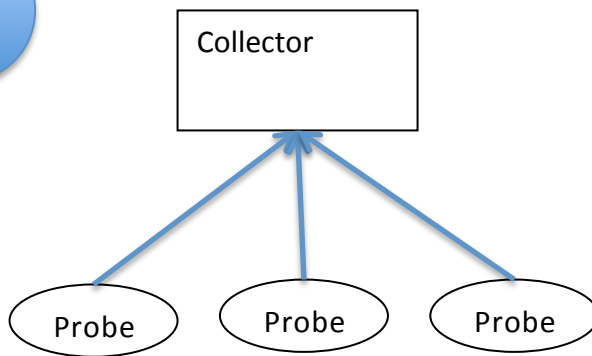


OSG Accounting for Campus Users

Ashu Guru

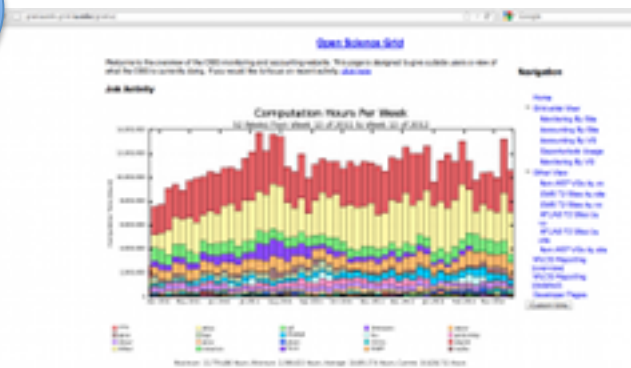
System Interfaces

1



Usage data collecting interface (**Collector**)

2



<http://gratiaweb.grid.iu.edu/gratia/>

Accounting reporter/display web interface (**Reporter**)

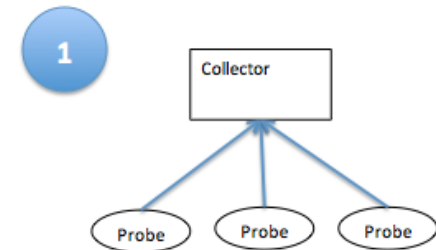
Collector

For each user

- Number of submitted jobs
- Number of completed jobs
- Number of failed jobs (exit code !=0)

For each job

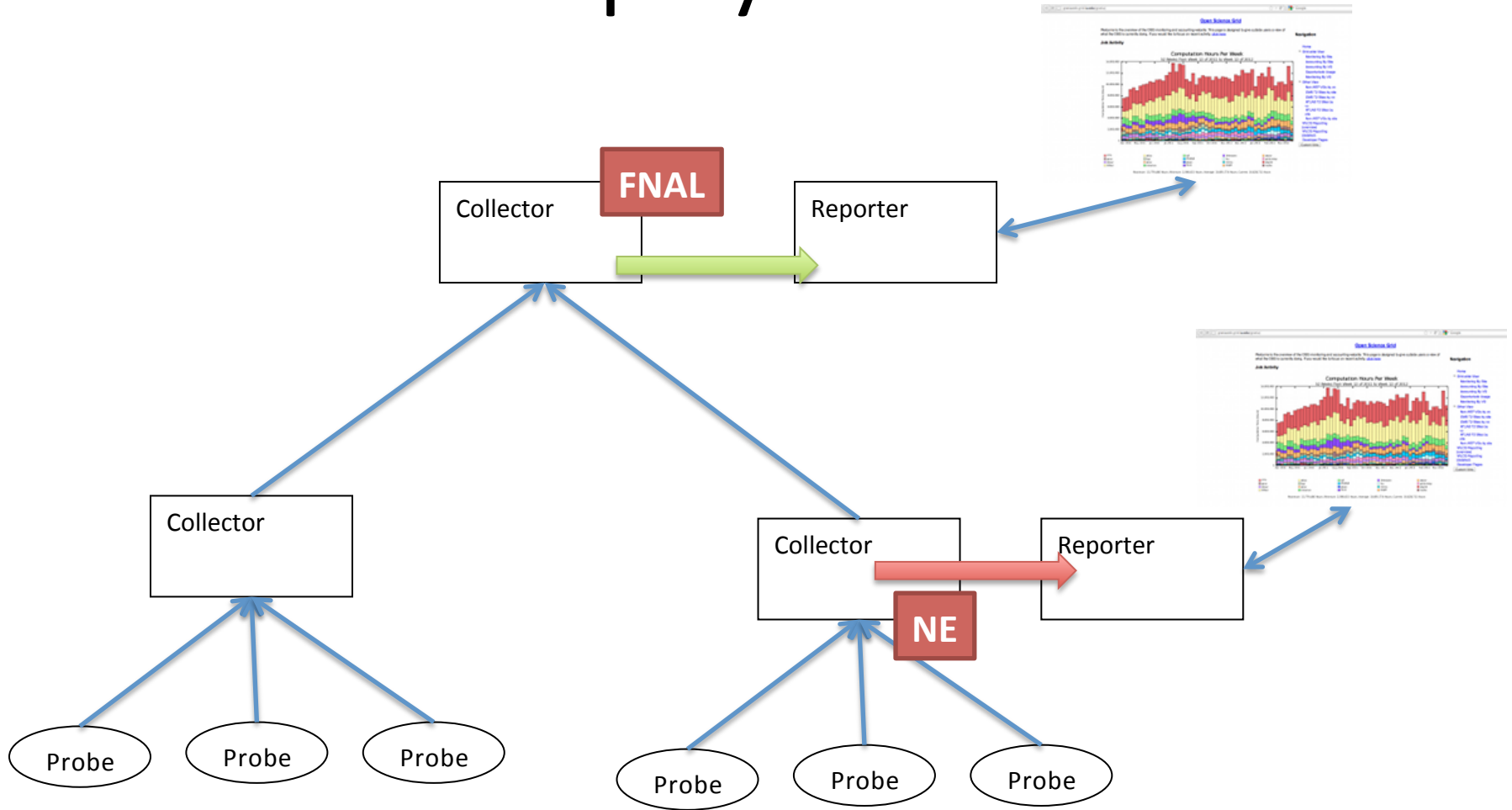
- CPU Duration
- Wall Duration
- Cores



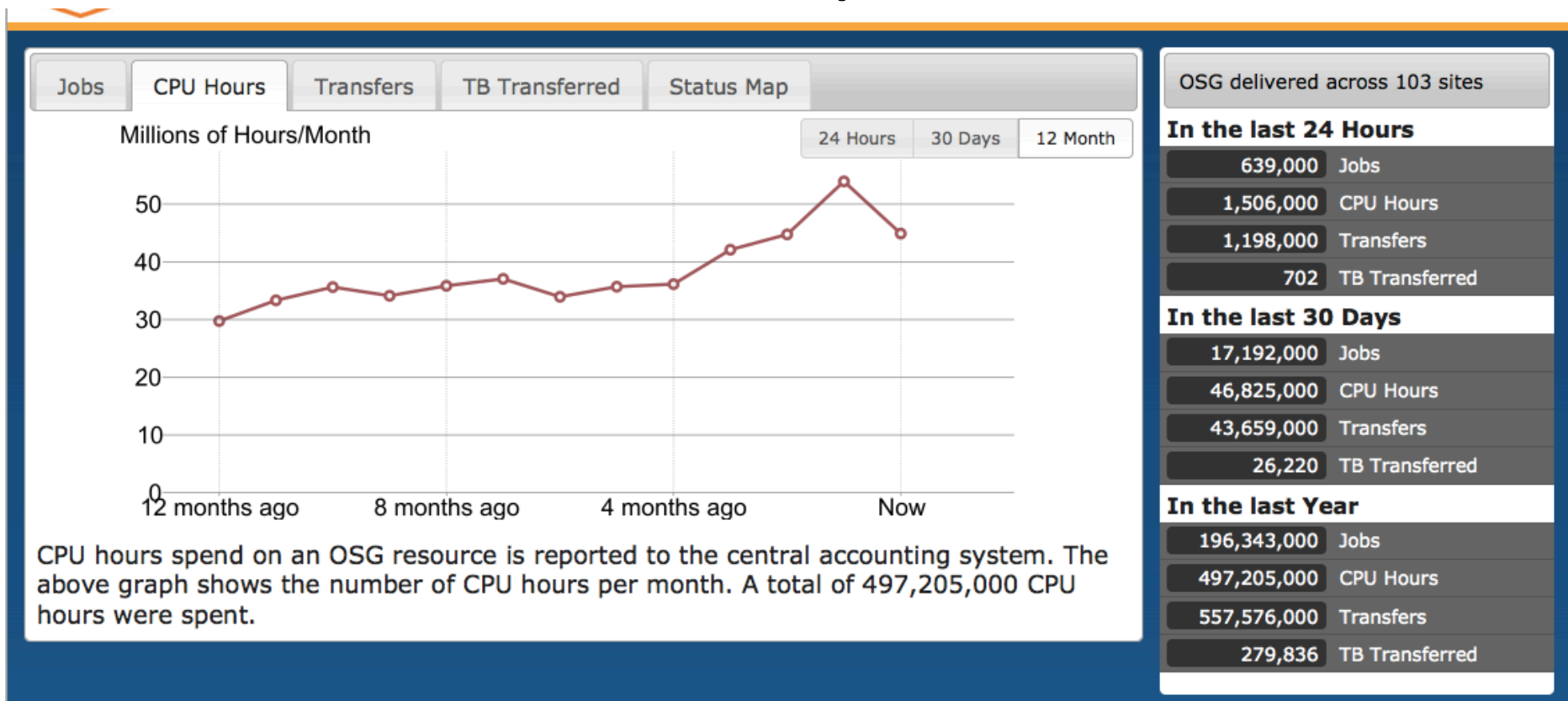
Set of Probes Gather information

- **Job Schedulers:**
 - Condor
 - PBS
 - LSF
 - Torque
 - Sun/Oracle Grid Engine job scheduler
 - BOINC
 - Pilot jobs (GlideinWMS) and GLEXEC
 - Campus Factory jobs submission
- **Data Storage:**
 - Hadoop
 - Scalla/Xrootd
 - Dcache
 - GridFTP
- **Services:**
 - Information service – BDII
 - RSV (Resource and Service Validation)

Deployment



High Level Summaries/Trends example



display.grid.iu.edu

Reporter Interface

<http://gratiaweb.grid.iu.edu/gratia/>

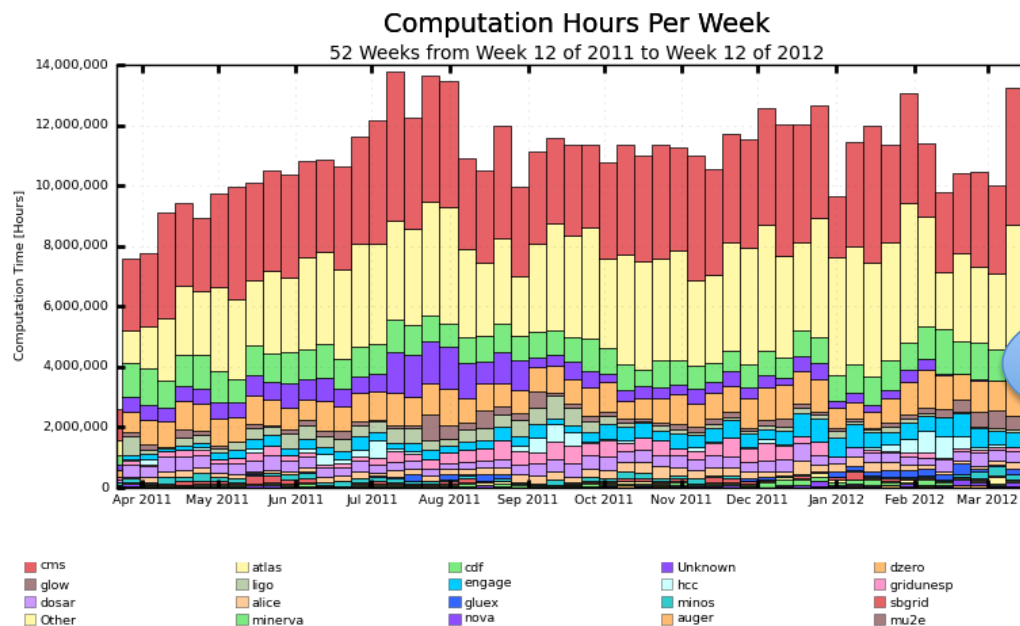
[Open Science Grid](#)

Welcome to the overview of the OSG monitoring and accounting website. This page is designed to give outside users a view of what the OSG is currently doing. If you would like to focus on recent activity, [click here](#)

Navigation

- Home
- Grid-wide View
 - Monitoring By Site
 - Accounting By Site
 - Accounting By VO
 - Opportunistic Usage
 - Monitoring By VO
- Other View
 - Non-HEP VOs by vo
 - CMS T2 Sites by site
 - CMS T2 Sites by vo
 - ATLAS T2 Sites by

Job Activity



Maximum: 13,779,480 Hours, Minimum: 2,596,015 Hours, Average: 10,891,774 Hours, Current: 10,628,711 Hours

Developer Pages

Developer Pages

Custom View

Glidein and Campus Grid Bar Graphs



- [Wall Hours by Number of Cores in the Job](#)
- [Job Count by VO](#)
- [Number of Users by Science Field](#)
- [Wall Hours by Facility](#)
- [Wall Hours by Unategorized Users](#)

Glidein and Campus Grid Bar Graphs

- [Exit Code Count by VO: \\$vo \(Glidein\)](#)
- [Daily Hours By User \(Glidein\)](#)
- [Daily Hours By User and Host \(Glidein\)](#)
- [WMS Hours Spent on Jobs By Facility \(Glidein\)](#)

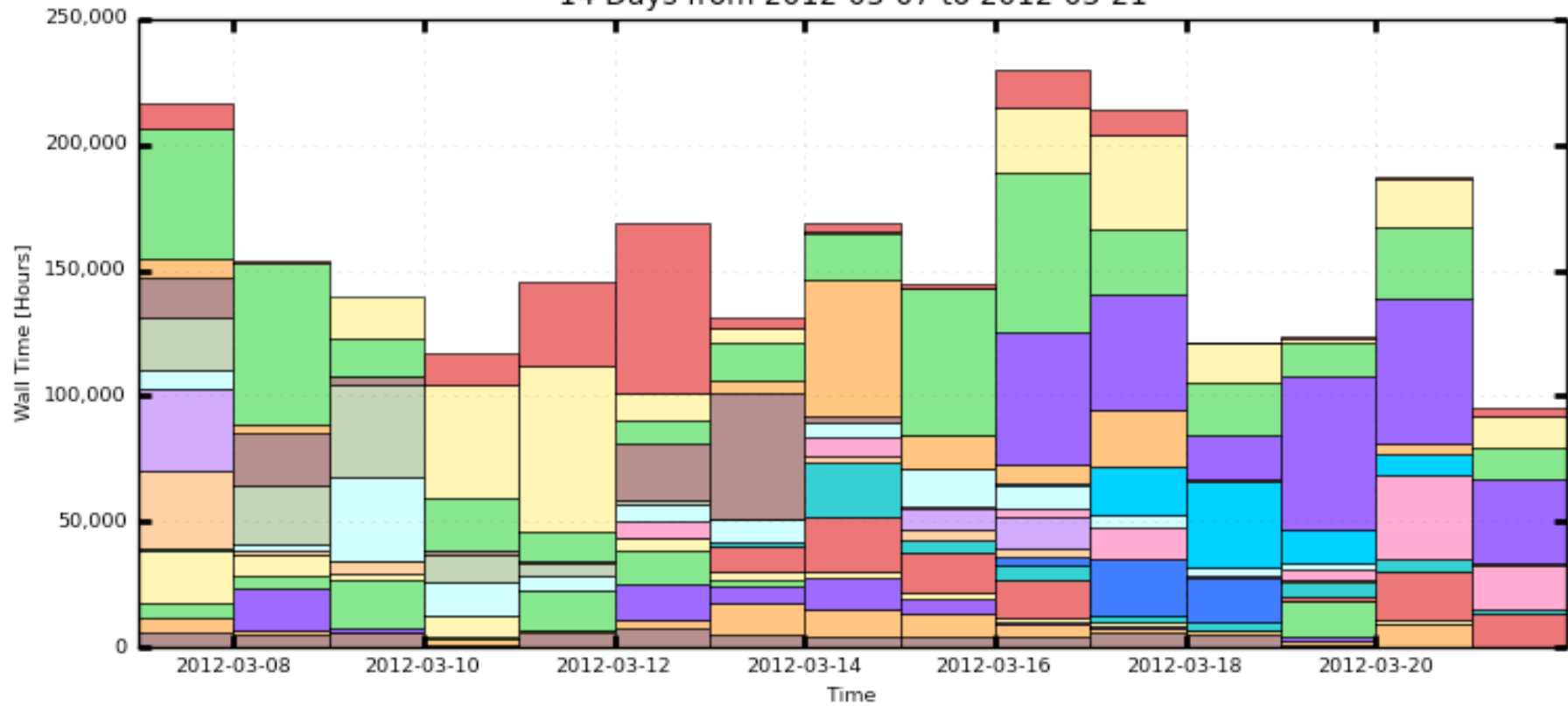
Bar Graphs

- [Opportunistic Wall Hours](#)
- [User Wasted Hours](#)
- [CPU Hours by User](#)
- [Monthly Wall Hours](#)
- [Monthly Job Count](#)
- [Non-USLHC-prov](#)
- [OSG Size By Class](#)
- [Percent Opportunistic](#)
- [Daily Hours By User](#)
- [Daily Hours By User and Host](#)
- [CPU Efficiency](#)
- [Monthly Job Count](#)

- **Exit Code Count by VO: \$vo (Glidein)**
- **Daily Hours By User (Glidein)**
- **Daily Hours By User and Host (Glidein)**
- **WMS Hours Spent on Jobs By Facility (Glidein)**

Daily Hours By User (Glidein)

14 Days from 2012-03-07 to 2012-03-21

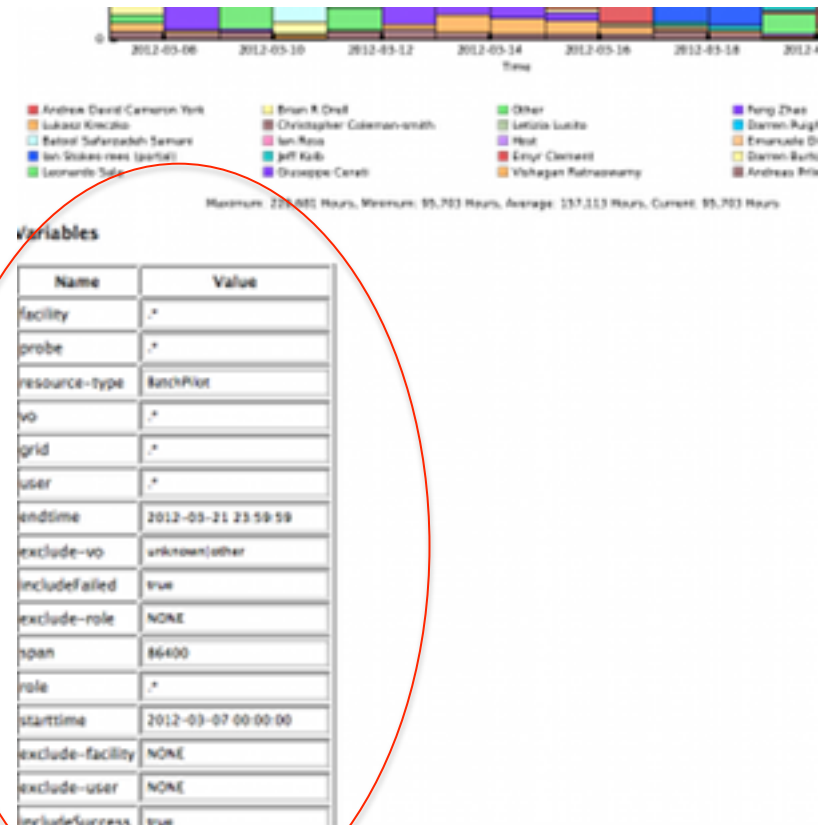


- | | | | |
|---------------------------|---------------------------|---------------------|-------------------|
| Andrew David Cameron York | Brian R Drell | Other | Feng Zhao |
| Lukasz Kreczko | Christopher Coleman-smith | Letizia Lusito | Darren Puigh |
| Batool Safarzadeh Samani | Ian Ross | Host | Emanuele Di Marco |
| Ian Stokes-rees (portal) | Jeff Kolb | Emyr Clement | Darren Burton |
| Leonardo Sala | Giuseppe Cerati | Vishagan Ratnaswamy | Andreas Pric |

Maximum: 229,681 Hours, Minimum: 95,703 Hours, Average: 157,113 Hours, Current: 95,703 Hours

Query Parameters

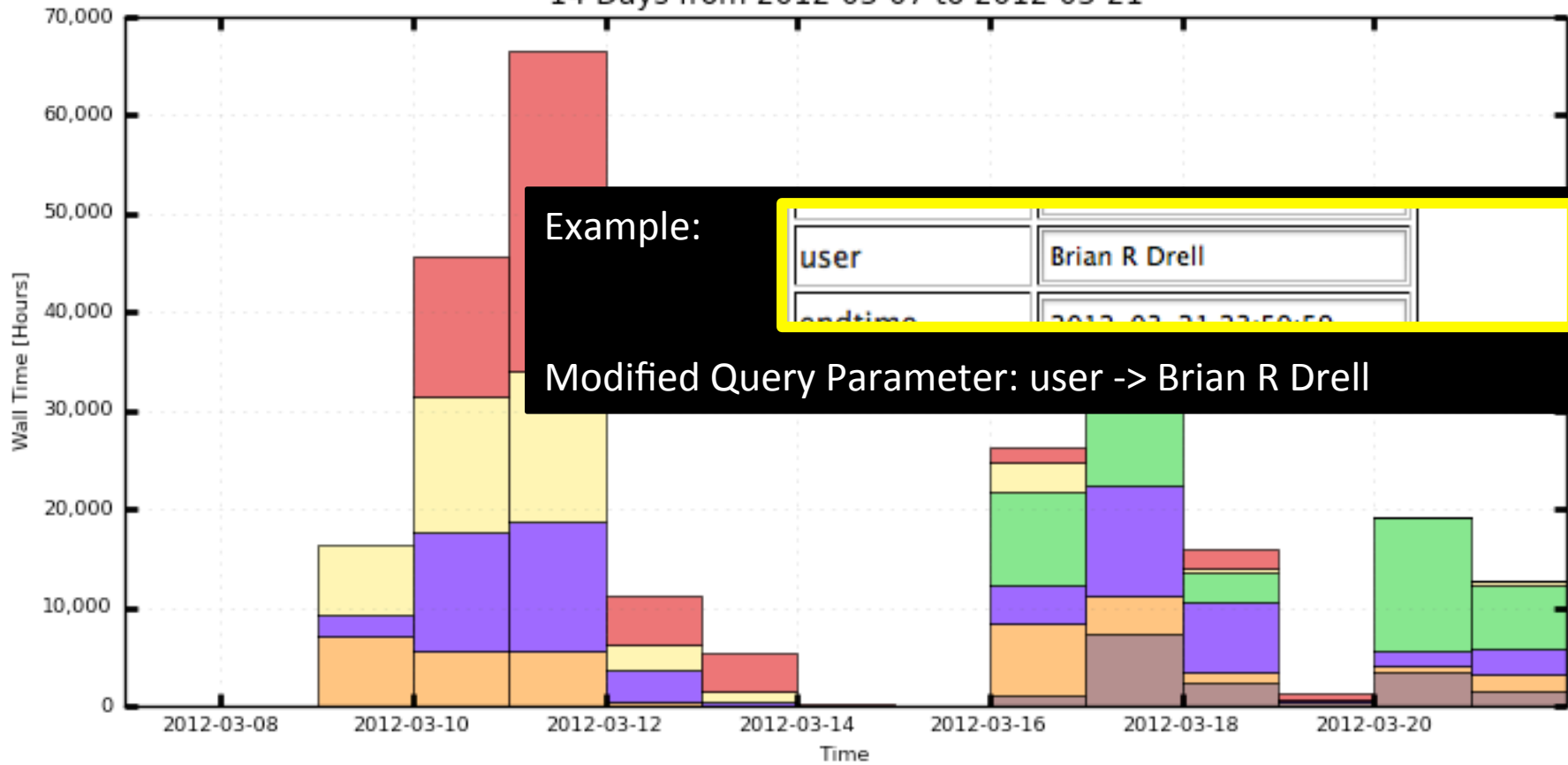
- **facility**
- resource-type
- **vo**
- grid
- **user**
- endtime
- exclude-vo
- starttime
- exclude-facility
- exclude-user



String Parameters accept Regular Expressions

Daily Hours By User and Host (Glidein)

14 Days from 2012-03-07 to 2012-03-21



Example:

user	Brian R Drell
endtime	2012-03-21 23:59:59

Modified Query Parameter: user -> Brian R Drell

- Brian R Drell @ Nebraska-overflow
- Brian R Drell @ UColorado_HEP-overflow
- Brian R Drell @ UColorado_HEP
- Brian R Drell @ UCSDT2-overflow
- Brian R Drell @ GLOW-overflow
- Brian R Drell @ Nebraska

Maximum: 66,571 Hours, Minimum: 0.00 Hours, Average: 17,233 Hours, Current: 12,778 Hours

Thank You