

4

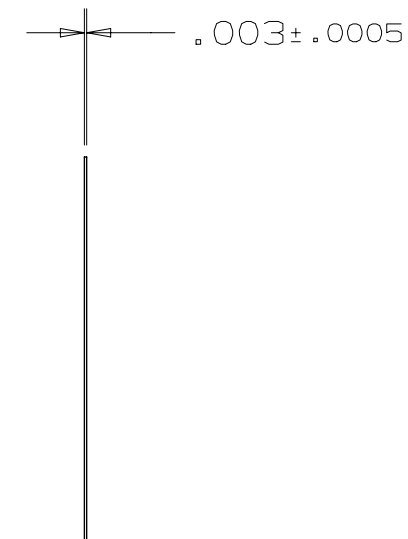
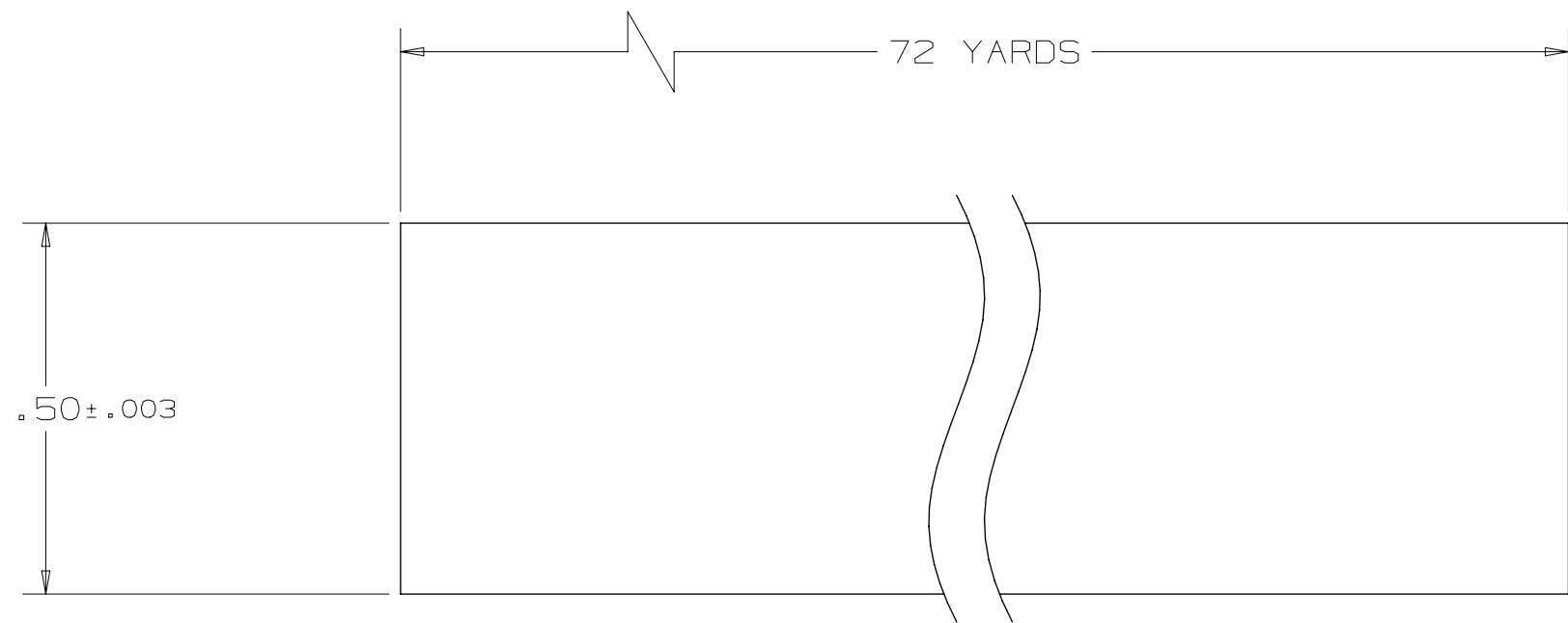
3

2

1

DESCRIPTION: S-2 GLASS TAPE, .5" x .003" THICK - SPEC DRAWING
PROJECT: LHCLARP
CATEGORY: INSULATION

REV	REVISION CONTROL DOCUMENT	DATES	SIGNATURES	
-	F10133815---RCD		DRAWN	
			APPROVED	



1	FC0066014	S2 GLASS TAPE, .5" x .003" THICK	A/R
ITEM	FERMI #	PART NAME	QTY

PARTS LIST

UNLESS OTHERWISE SPECIFIED				
±.X	±.XX	±.XXX	±X/X	±X°
.1	.02	.005	1/16	1°
BREAK ALL SHARP EDGES, MAX: .015 DO NOT SCALE DRAWING DIMENSIONS BASED ON: ASME Y14.5-2009 MAX MACHINE ALL SURFACES: 125√ DRAWING UNITS: INCHES				
<p>THIRD ANGLE PROJECTION</p>				

DRAWN	J. COGHILL	DATE	05-Feb-2020
CHECKED	G. NELSON	DATE	07-Feb-2020
APPROVED	M. YU	DATE	07-Feb-2020
USED ON			
MATERIAL			
SEE PARTS LIST			
GROUP: Technical Division - Design and Drafting CAGE CODE: OU5R6			

<p>FERMI NATIONAL ACCELERATOR LABORATORY UNITED STATES DEPARTMENT OF ENERGY</p>				
NAME				
S-2 GLASS TAPE, .5" x .003" THICK - SPEC DRAWING				
SCALE	SIZE	DRAWING NUMBER	SHEET	REV
4:1	B	F10133815	1 OF 1	-

4

3

2

1

TEMPLATE VERSION: 2018.12.03