

Welcome to the 1st hybrid Energy Frontier Workshop

Brown University and Zoomland

March 28-April 1, 2022

Laura Reina (FSU), [Meenakshi Narain \(Brown U.\)](#), Alessandro Tricoli (BNL)

The background of the slide is a stylized representation of the Ukrainian national flag, featuring a blue upper half and a yellow lower half, with a wavy, fabric-like texture. The text is overlaid on this background.

We stand in solidarity with Ukraine

We strongly condemn the horrific events and the violation of fundamental human rights in Ukraine.

Code Of Conduct

This workshop is part of the DPF sponsored Snowmass Community Study and hence we will follow the APS Code of Conduct for this workshop.

Violations of this code of conduct policy should be reported confidentially to Meenakshi Narain

It is the policy of the APS that all participants, including attendees, vendors, APS staff, volunteers, and all other stakeholders at APS meetings will conduct themselves in a professional manner that is welcoming to all participants and free from any form of discrimination, harassment, or retaliation. Participants will treat each other with respect and consideration to create a collegial, inclusive, and professional environment. Creating a supportive environment to enable scientific discourse at APS meetings is the responsibility of all participants.

Participants will avoid any inappropriate actions or statements based on individual characteristics. Disruptive or harassing behavior of any kind will not be tolerated. Harassment includes but is not limited to inappropriate or intimidating behavior and language, unwelcome jokes or comments, unwanted touching or attention, offensive images, photography without permission, and stalking. If a participant observes inappropriate comments or actions and personal intervention seems appropriate and safe, they should be considerate of all parties before intervening.

More information about CoC on <https://sites.brown.edu/efworkshop/code-of-conduct/>

Local Logistics

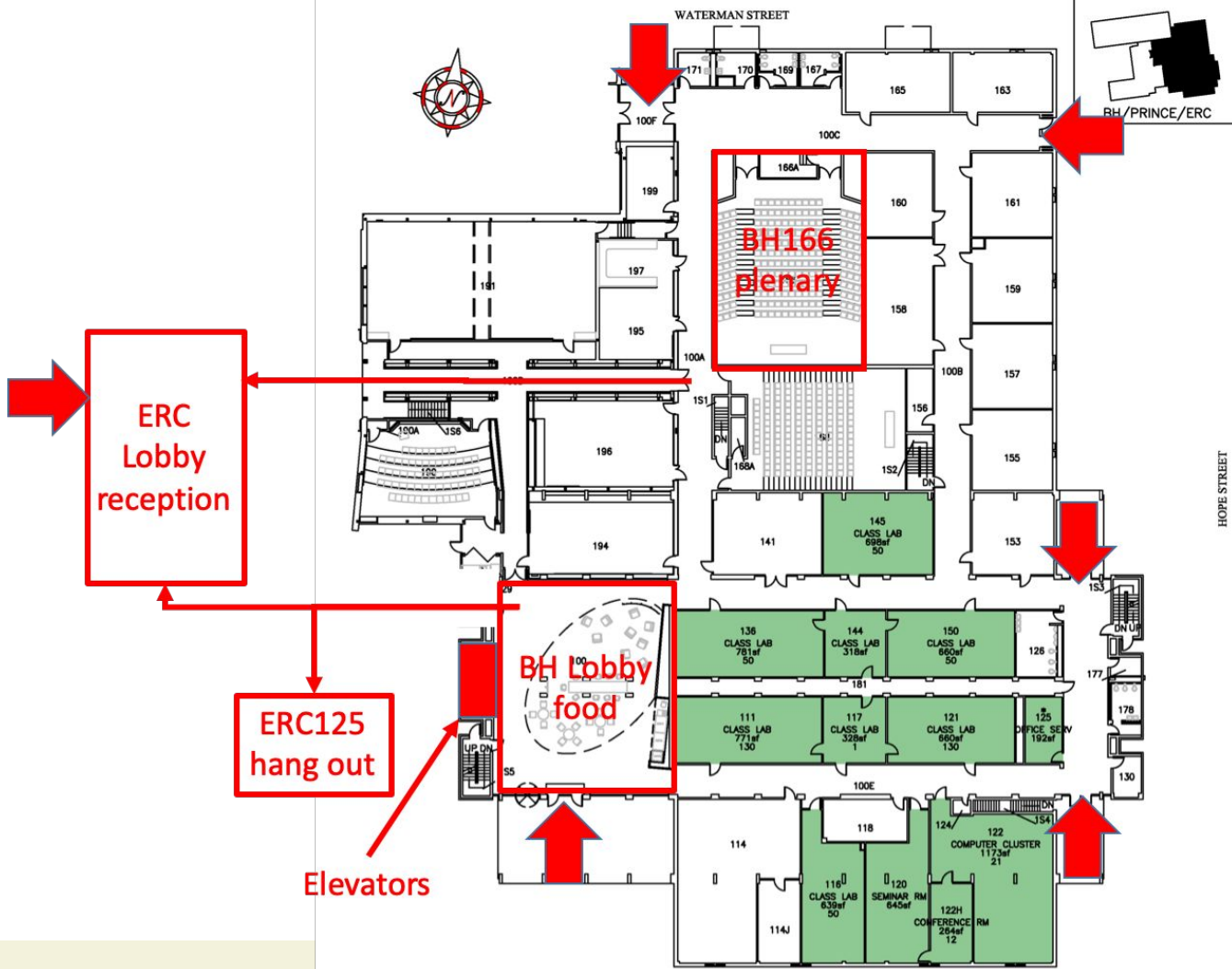
- **COVID-19 Safety:** <https://sites.brown.edu/efworkshop/covid-19-safety/>
- *Brown University abides by public health guidance and health and safety protocols to reduce the risk of transmission of COVID-19. Event attendees, including visitors and guests, must comply with all University policies and protocols in place at the time of the event, including **current University policy regarding face masks and coverings** (see the University's [COVID-19 Campus Activity Status page](#) for the current policy for both vaccinated and unvaccinated individuals).*
- The current policies are listed on the site "[Healthy Brown](#)". In particular for visitors, the policies are detailed on the page "[Visitors & Guests](#)". Our participants may fall into "**short term**" and "**limited duration visitors.**"

- Please wear your masks at all times when you are in the room
 - We have masks and hand sanitizers available
- The in-room presenter can take their masks off during the presentation

- We also require proof of negative covid-as you come in.
- Rapid self-test is OK on the first day you attend the meeting.
- Please contact me if you need any rapid self tests
 - [Gladly donated by the HEP students, postdocs, and the Narain-Heintz family]

Local Logistics

- **Check-in**
 - Please check-in with the volunteer in the B&H lobby during one of the breaks to get your name tags, and confirm your attendance at the events
 - Reception - This evening
 - Ladd Observatory visit - This evening
 - Workshop Dinner - Thursday
 - Please wear your name badge during the breaks and the events
 - The volunteers may check-in with you, in case your name tag is not visible.
- **Accessibility:** Close Captioning by WhiteCoat [Thank you BNL DEI Office!]
 - All rooms are wheelchair accessible
- **Meals and Coffee Breaks**
 - Meals and Coffee breaks will be held in the Barus & Holley Lobby
- **More local information** is available at the following tabs on the website
 - “workshop venue”: <https://sites.brown.edu/efworkshop/workshop-venue-2/>
 - “Schedule”: <https://sites.brown.edu/efworkshop/schedule/>
 - Interactive Map: https://www.brown.edu/Facilities/Facilities_Management/maps/



Local Logistics - Wireless access

Instructions on the website: “Workshop Venue”

Wireless Access

The Brown-Guest wireless network is available to all Brown Guests.

How to Connect

Open the wireless settings on your device.

Choose the wireless network Brown-Guest from your list of wireless networks.

When you open a web browser, you will be prompted to agree to the terms to start using the internet.

Your connection will last for 7 days, after which you will be prompted to agree to the terms again.

In addition EDUROAM also works

Hybrid Workshop Etiquette

- The zoom links will be different each day and will be distributed at 12:01 am.
- For each session, there will be two organizers and two student/postdoc supporters
 - one each in the room and one on Zoom
- The **in-room session organizer** will
 - Make sure the presentation is projected, both from the room or on zoom
 - Introduce the speaker(s) - whether on zoom or in the room
 - **Monitor the time for the speakers in the room**
 - **facilitate Q&A in the room**
- The **Zoom session organizer** will
 - make sure the presentation is visible on zoom
 - monitor the time for the speakers if presenting on Zoom
 - monitor chat on zoom
 - announce who will go next during Q&A from zoom - when the in-person chair asks.
- **Q&A: please raise your “physical” or “virtual” hand to participate.**
 - In-room participant, please wait for the microphone before you speak.
- One in-room **student/postdoc supporters** will manage the media/microphone. On zoom a student supporter will monitor the zoom operations and serve as the contact for IT.

Goal for the Energy Frontier Workshop

- Regroup after the submissions of the contributed papers.
- Start formulating vision for EF and TG reports
 - Contributed papers will serve as the basis of the discussions which will define TG and EF reports and formulate our vision for the EF.
- Timelines:

3/15/22	3/28/22-4/1/22	5/31/22	6/30/22	7/17-26/22	9/30/22	10/31/22
Deadline Contributed Paper Submission	EF Workshop (Brown U.)	Prelim. Topical Group Reports	Prelim. Energy Frontier Report	Community Summer Study (UW-Seattle)	Final Reports	Snowmass Book & ArXiv docs

Contributed Papers

- **122 Papers submitted so far to Energy Frontier**
 - **Thank you all!, your efforts are appreciated and are instrumental in defining the EF vision**
 - **Many thanks to Michael Peskin for his efforts in compiling them for the EF [tedious process!]**
 - **Thank you to all topical group conveners and liaisons in leading /organizing the studies.**
- **Papers keep coming in, more are expected in coming days.**
 - In few and specific cases we expect contributions in a few weeks time scale
 - Several contributions are focused on reach of a small set of processes, while many other contributions are compendia of several studies
- **No. of submission is unevenly distributed between TG. In some cases this is by construction as TGs have decided to combine several studies in few comprehensive papers**

EF01	EF02	EF03	EF04	EF05	EF06	EF07	EF08	EF09	EF10	XFrontier/ General
17	5	7	12	2	7	3	9	25	11	24

Let the workshop begin!