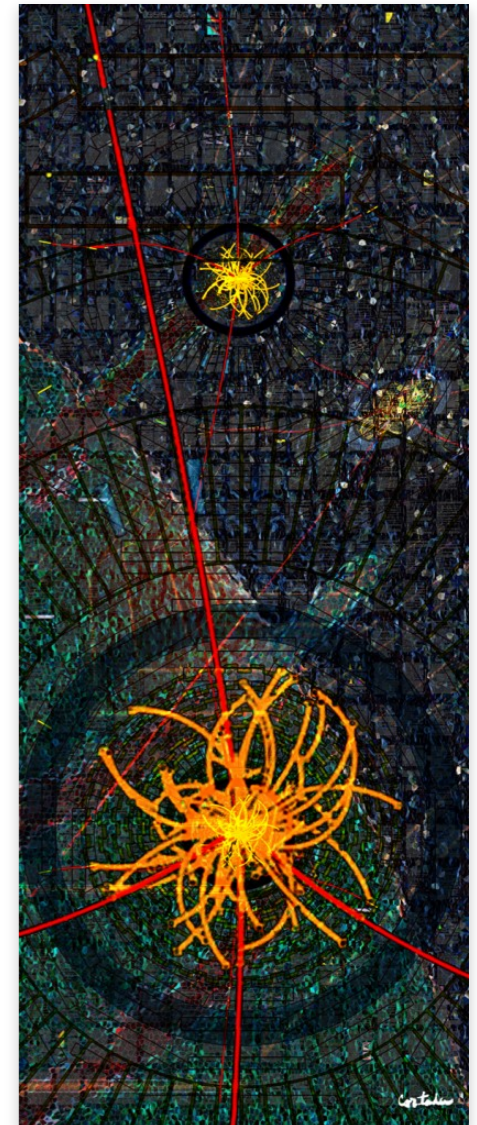
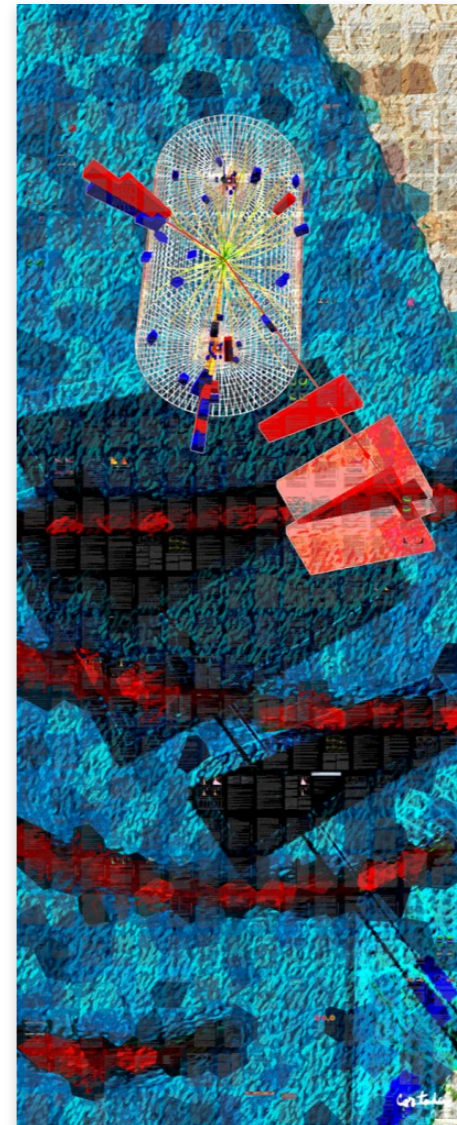
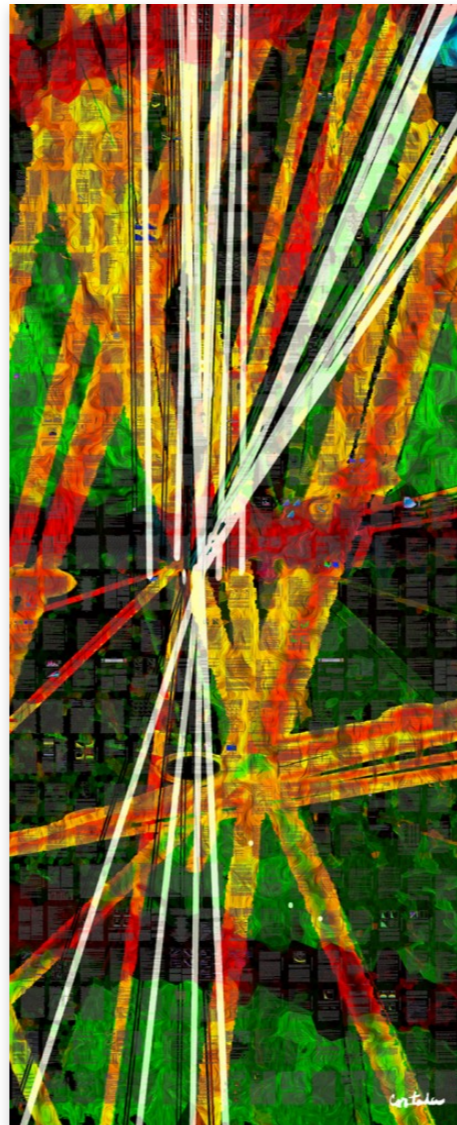
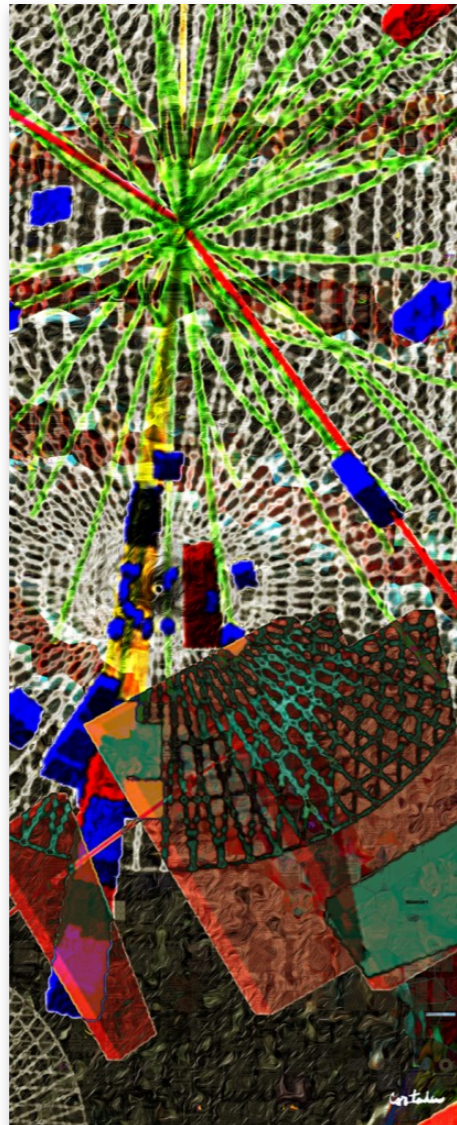
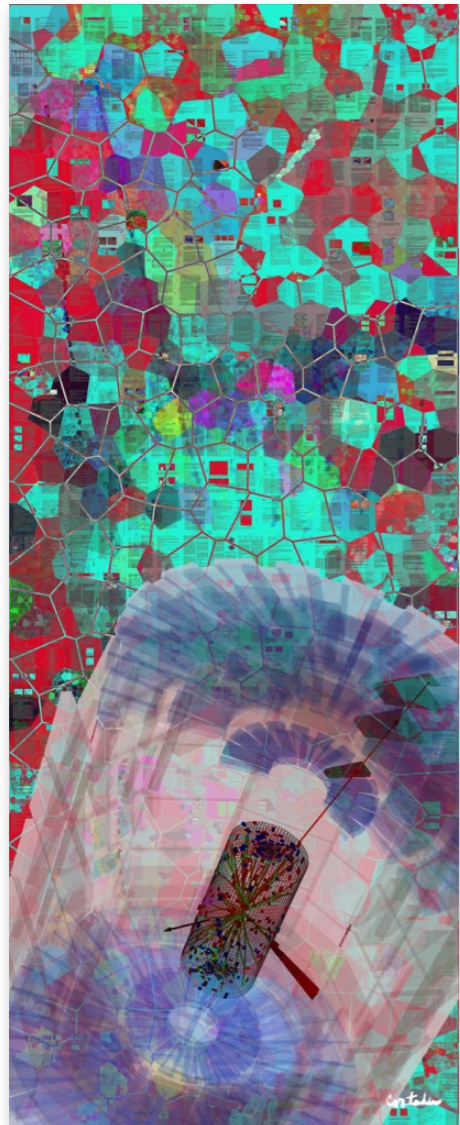




FNAL CMS Facility

D. Mason for USCMS Software & Computing



CMS Facility Highlights past ~month

- Run 3 was progressing well until couple weeks ago
 - Data getting here and on tape, though obviously has slowed down.
 - Restart expected in few weeks
- T1/LPC Operations stable, though did have temp. failure of tape head node giving few hours of red metrics.
 - LPC Downtime planned for next Tues to cover kernel reboots
- 2022 HW purchases:
 - Expecting PO for disk purchase to be cut any day now (maybe has)
 - All 20 LTO9 drives brought online this week
- Premix workflow run week before last 700Gbit (nearly all IPv6 too!)
 - hit the roof on a couple switches, but good CPU efficiency ==> kept up well.

