



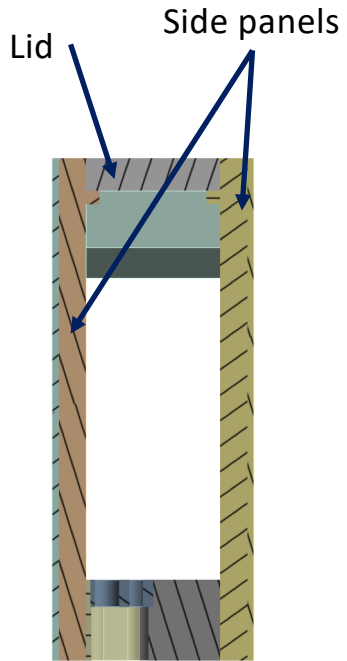
# STT working group meeting Frame FE analysis

*Otari Kemularia*

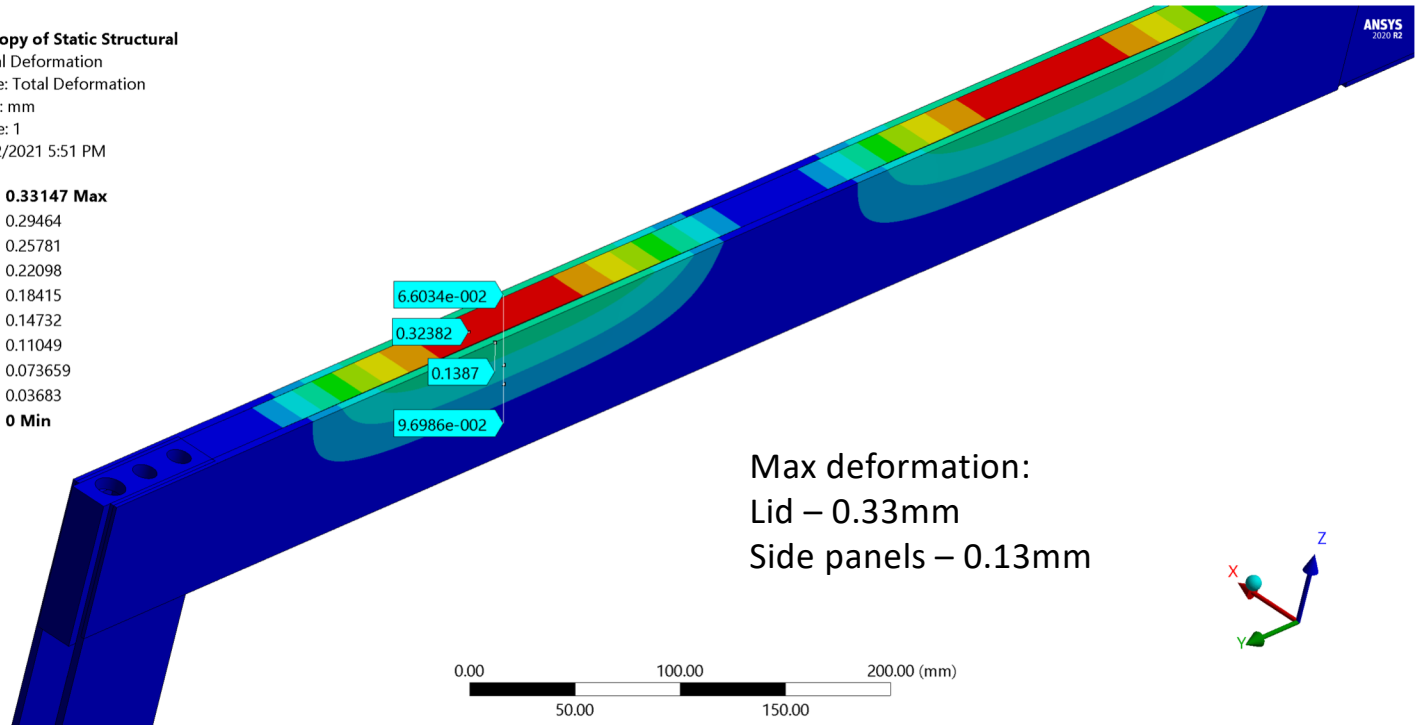
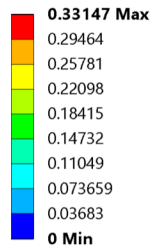
Georgian Technical University, Tbilisi, Georgia

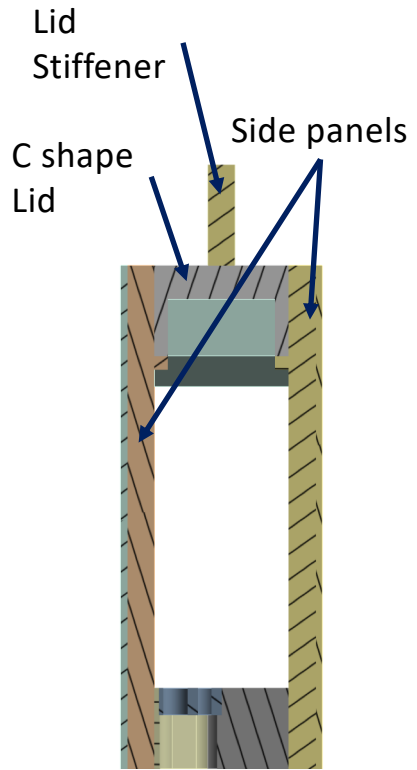
27 April 2022

# Original Design

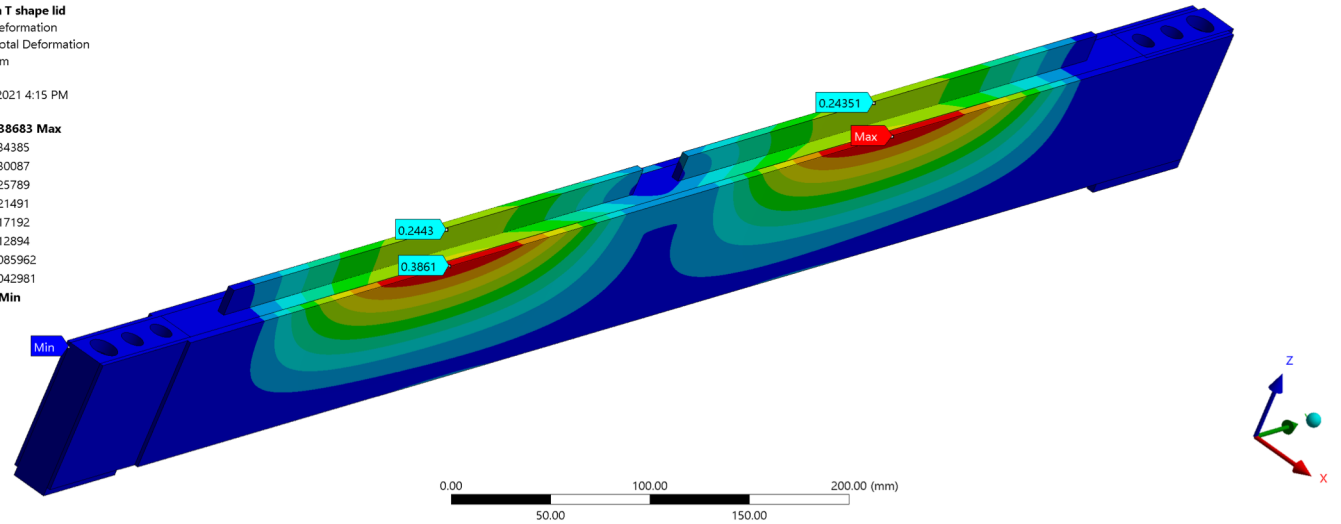
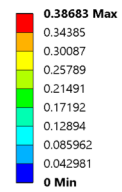


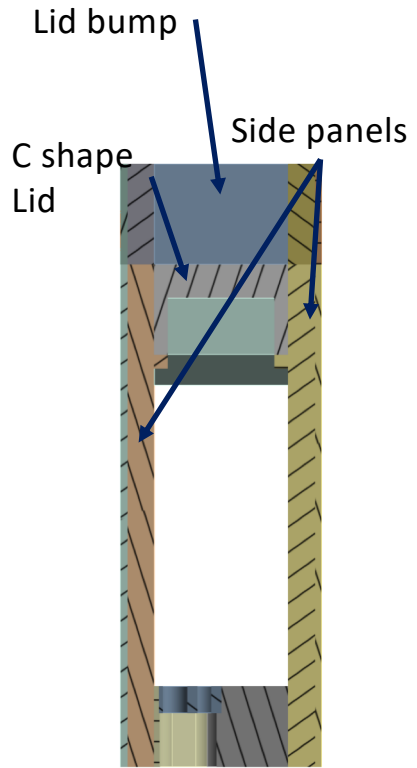
**B: Copy of Static Structural**  
Total Deformation  
Type: Total Deformation  
Unit: mm  
Time: 1  
7/12/2021 5:51 PM



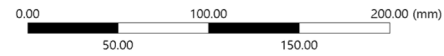
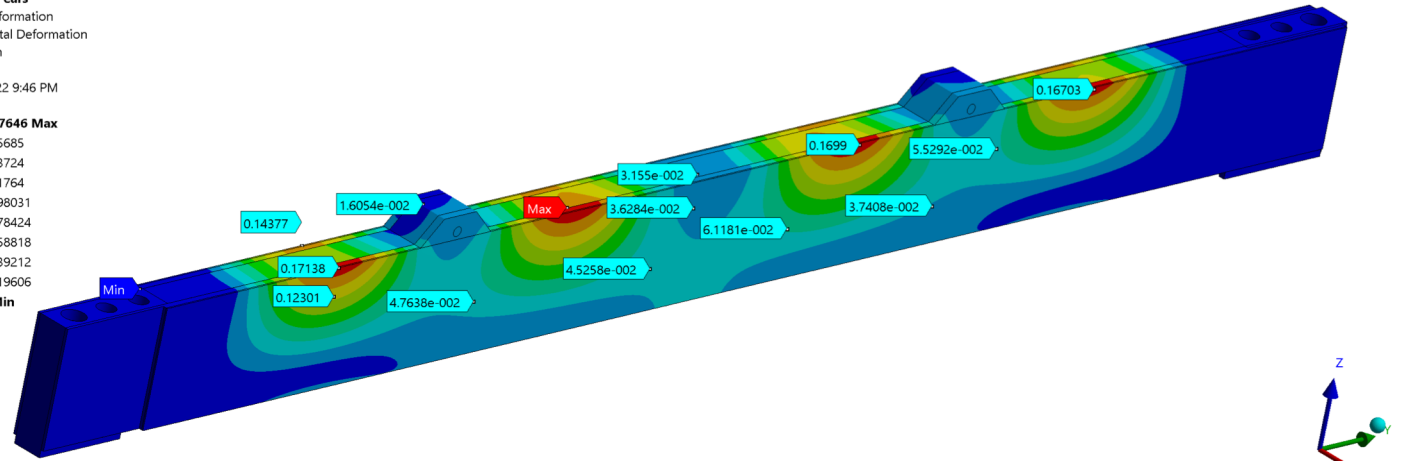
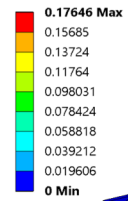


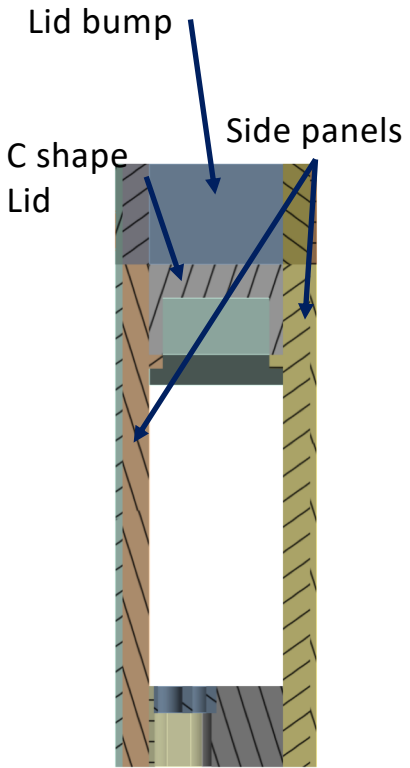
C: With T shape lid  
 Total Deformation  
 Type: Total Deformation  
 Unit: mm  
 Time: 1  
 11/22/2021 4:15 PM





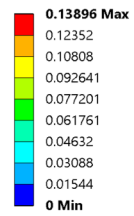
E: With "ears"  
 Total Deformation  
 Type: Total Deformation  
 Unit: mm  
 Time: 1  
 4/21/2022 9:46 PM



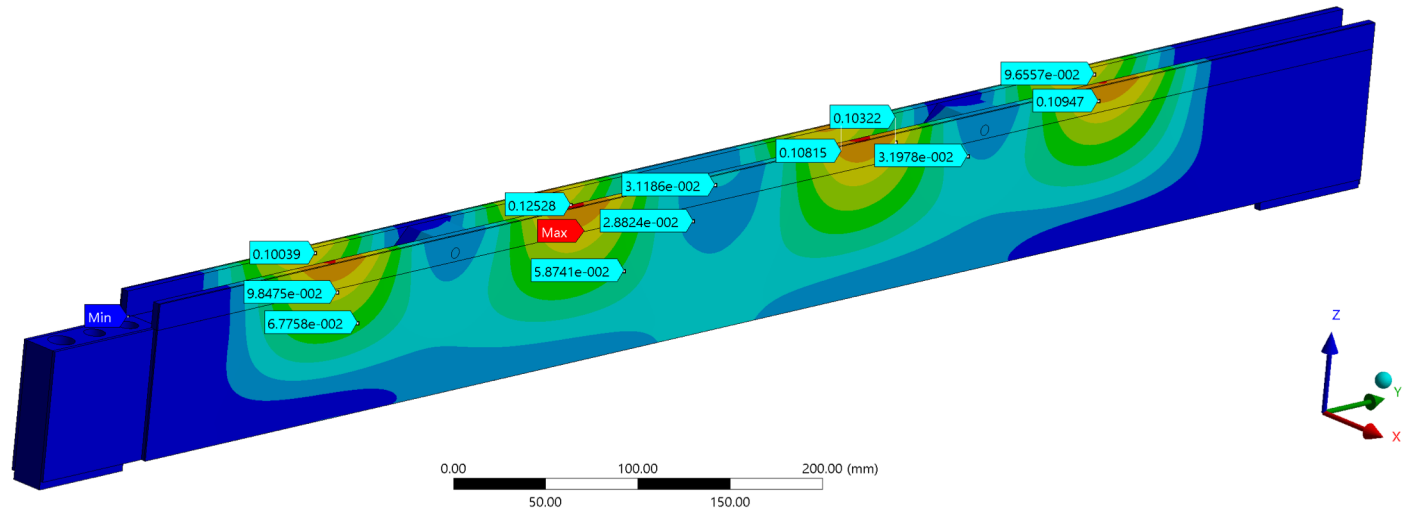


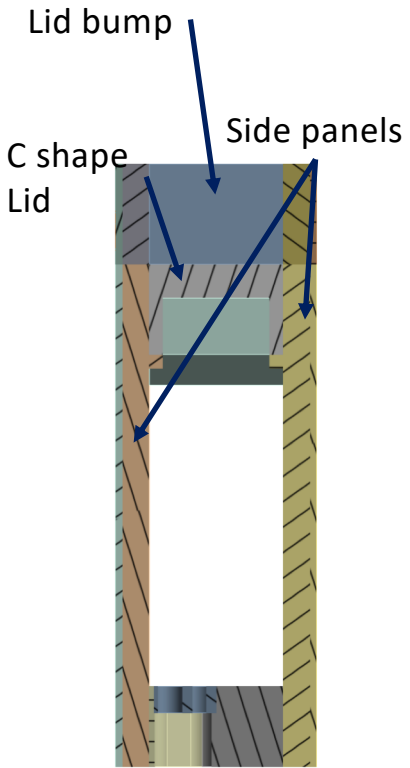
5mm Lid  
0.9 Bar

E: With "ears"  
Total Deformation  
Type: Total Deformation  
Unit: mm  
Time: 1  
4/25/2022 5:59 PM



Extruded side panels

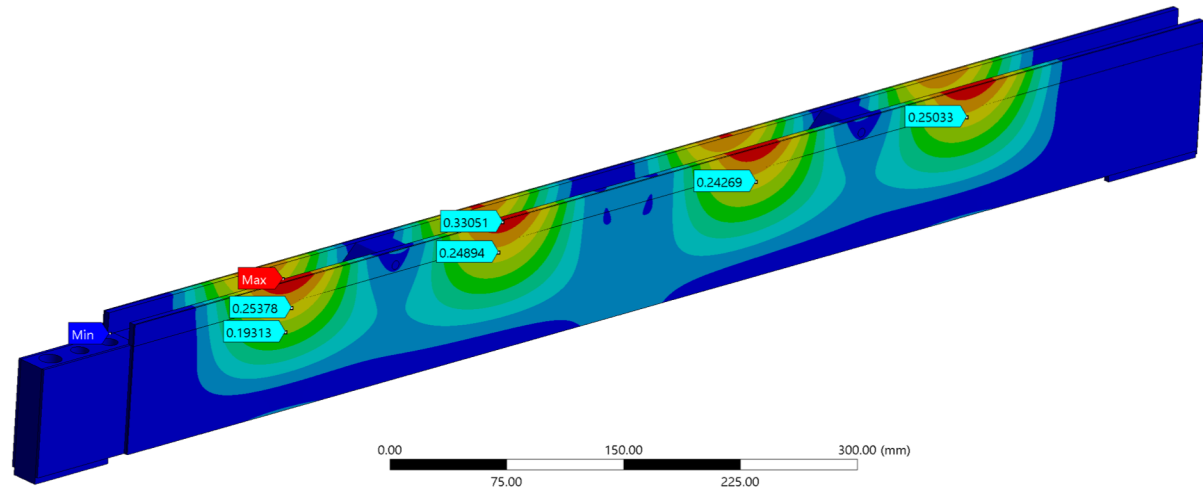
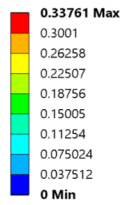




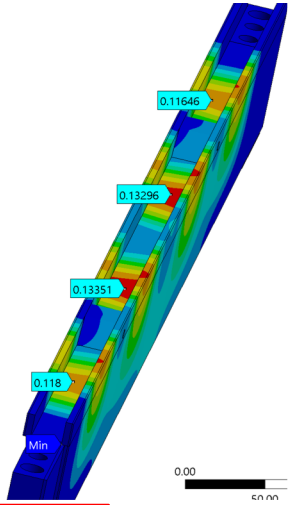
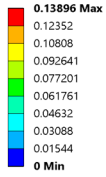
5mm Lid  
2 Bar

Extruded side panels

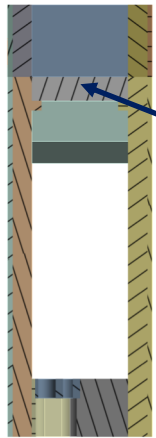
**E: With "ears"**  
Total Deformation  
Type: Total Deformation  
Unit: mm  
Time: 1  
4/27/2022 6:12 PM



E: With "ears"  
 Total Deformation  
 Type: Total Deformation  
 Unit: mm  
 Time: 1  
 4/27/2022 9:23 AM



0.9 Bar **0.13mm**

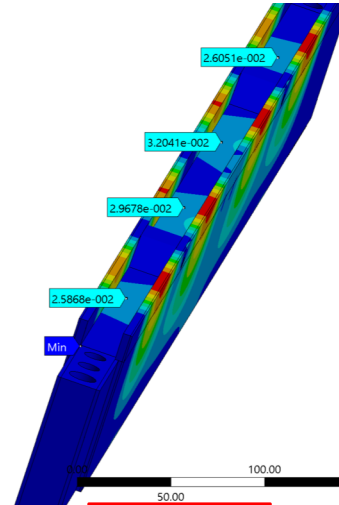
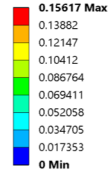


Flat Lid

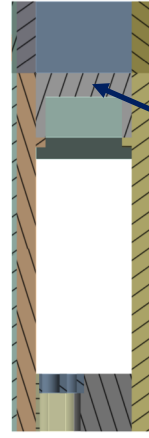


4/27/22

E: With "ears"  
 Total Deformation  
 Type: Total Deformation  
 Unit: mm  
 Time: 1  
 4/27/2022 8:42 AM



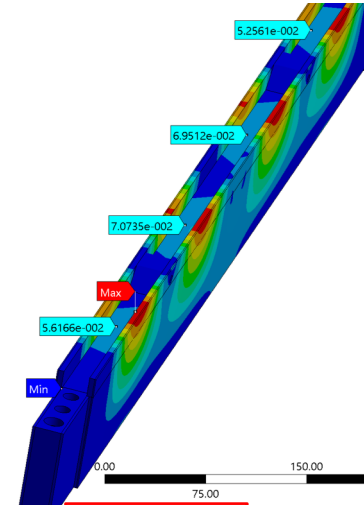
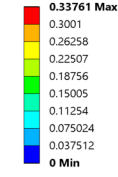
0.9 Bar **0.032mm**



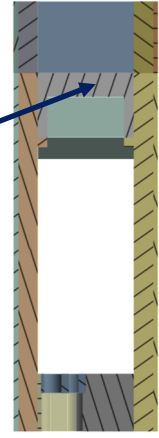
C shape Lid

50.00

E: With "ears"  
 Total Deformation  
 Type: Total Deformation  
 Unit: mm  
 Time: 1  
 4/27/2022 6:13 PM



2 Bar **0.073mm**



50.00

7