

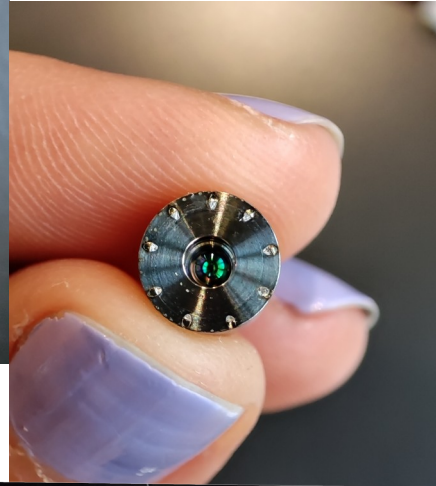
Laser-Fiber coupling

Sabrina Sacerdoti, for APC

APC - date

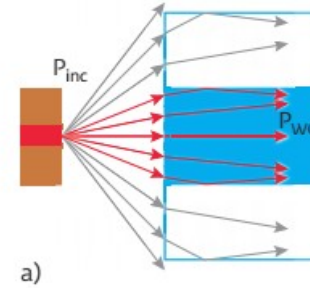
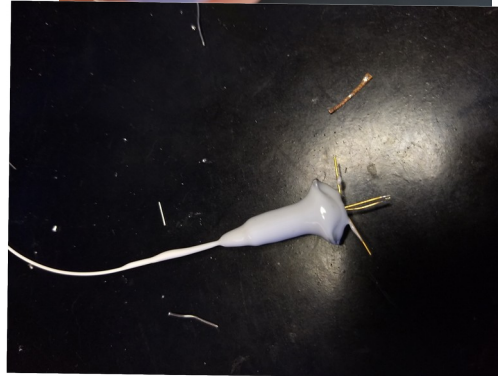
Lasermate FC connector

Laser is point-soldered to connector:
probably not "LAR tight"
→ try potting this area?

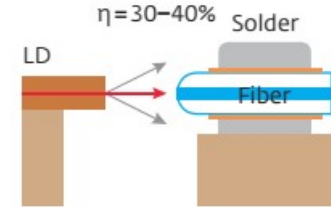


There seems to be a lens
inside → usually the laser
beam has a focus point
~few mm from lens

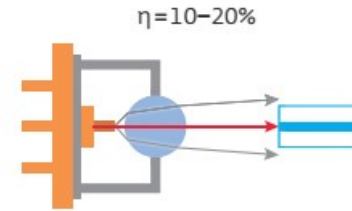
By fully potting a pigtailed
laser we did not see the
power output drop



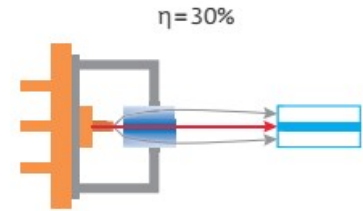
a)



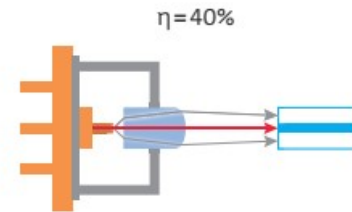
b)



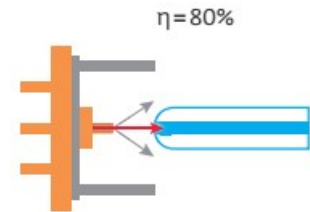
c)



d)



e)



f)

Lasers usually come with some
kind of lens