

Memorandum

Date: March 30, 2022
To: Matt Quinn
Dave Butler
Jim Kilmer
David Jayson
Leonard Nelson
From: Maddie Schoell
Re: Downposting of Meson Assembly Building (MAB)

Maddie Schoell
RPO Department Head

ESH Section
P.O. Box 500, MS 371
Kirk Road and Pine Street
Batavia, Illinois 60510-5011
USA
Office: 630.840.4807
Mobile: 574.229.0659
maddiew@fnal.gov

Message:

This memo is to approve the downposting of Meson Assembly Building (MAB) from a Radioactive Material Area and Controlled Area to just a Controlled Area.

A dose rate survey and contamination wipe surveys for accelerator produced isotopes was performed and confirmed no residual radioactivity or contamination, see attached.

This area will now be posted as just a Controlled Area. As such, it may be used as an office area. No work on radioactive material is permitted in this space. Any radioactive material stored in this location must be properly labeled with the appropriate Class label and stored in a posted Radioactive Material container/cabinet.

Maddie Schoell – RPO Department Head

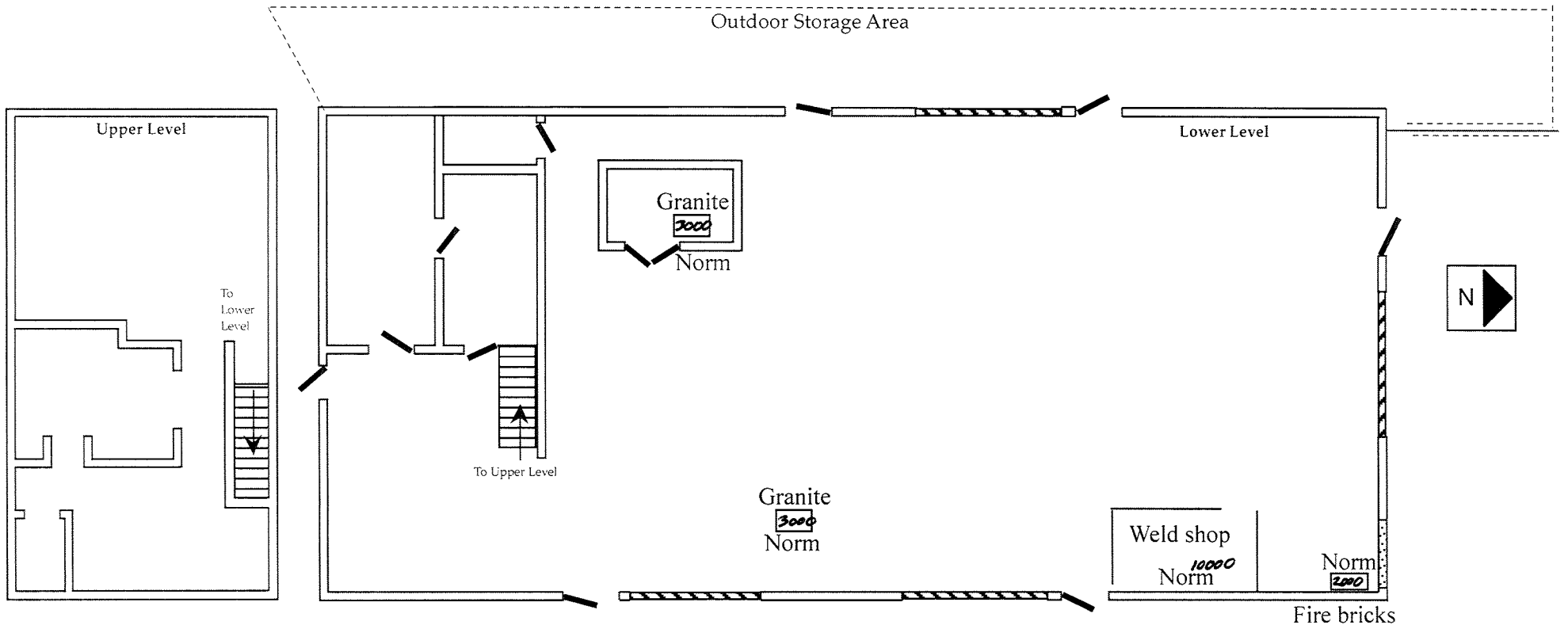
Cc: Greg Bock
Kevin Burkett
Rick Ford
Josh Frieman
Joel Fulgham
Raymond Lewis
Katie Swanson

ESH DocDB #6909

This Survey is part of the Quarterly survey package.
See attached cover sheet for surveyor, instrument, and review information.

Meson Assembly Building

Updated: 3/29/2018



All Areas < <u>N/A</u> mR/hr@1foot (Unless otherwise indicated)			Highest Dose Rate Found: <u>N/A</u> mR/hr@1foot					
Radiation Instruments Used			Bkgd _____ cpm Wipe # Reading Wipe # Reading _____ cpm _____ cpm _____ cpm _____ cpm _____ cpm _____ cpm _____ cpm _____ cpm _____ cpm _____ cpm			Comments: <i>Analyst survey only reading above Background were from NORM</i> <i>wipe survey on attached sheet</i>		
Inst Type: <u>Analyst</u>	<u>Analyst</u>							
Inst No: <u>3</u>	<u>20</u>							
Batt/Source Chk: <u>SAT</u>	<u>SAT</u>							
Cal. Due Date: <u>7-22</u>	<u>7-22</u>							
Background: <u>1200</u>	<u>1200</u>		Surveyed By: <u>White/Fulham</u> Reviewed By: <u>Maddyn Schell</u>					
LEGEND # - Dose Rate in mR/hr @ 1 ft. * - Unlabeled Radioactive Material #R - Radioactive Material Wipe # - Wipe #F - Floor Wipe								

Batavia Road



PD/MAB
 Hazard Map Page 1 of 1
 Address (or location)
 Batavia Road
 FIMS no. Occupancy Roof Type
 412 13 Tin
 SCALE 0 7.5 15
 Overall Bldg. Dimensions 50 ft. X 250 ft.

North End

Batch 1 | Batch 2 | Batch 3 | Batch 4

10	20	30	40	41	60	61	80	1	20	21	40	41	60	61	80	1	20	21	40	41	60	61	80	1	20	21	40	41	60
9	19	29	39	42	59	62	79	2	19	22	39	42	59	62	79	2	19	22	39	42	59	62	79	2	19	22	39	42	59
8	18	28	38	43	58	63	78	3	18	23	38	43	58	63	78	3	18	23	38	43	58	63	78	3	18	23	38	43	58
7	17	27	37	44	57	64	77	4	17	24	37	44	57	64	77	4	17	24	37	44	57	64	77	4	17	24	37	44	57
6	16	26	36	45	56	65	76	5	16	25	36	45	56	65	76	5	16	25	36	45	56	65	76	5	16	25	36	45	56
5	15	25	35	46	55	66	75	6	15	26	35	46	55	66	75	6	15	26	35	46	55	66	75	6	15	26	35	46	55
4	14	24	34	47	54	67	74	7	14	27	34	47	54	67	74	7	14	27	34	47	54	67	74	7	14	27	34	47	54
3	13	23	33	48	53	68	73	8	13	28	33	48	53	68	73	8	13	28	33	48	53	68	73	8	13	28	33	48	53
2	12	22	32	49	52	69	72	9	12	29	32	49	52	69	72	9	12	29	32	49	52	69	72	9	12	29	32	49	52
1	11	21	31	50	51	70	71	10	11	30	31	50	51	70	71	10	11	30	31	50	51	70	71	10	11	30	31	50	51

7.5 15 16 30 45 60 75 90 105 120 135 150

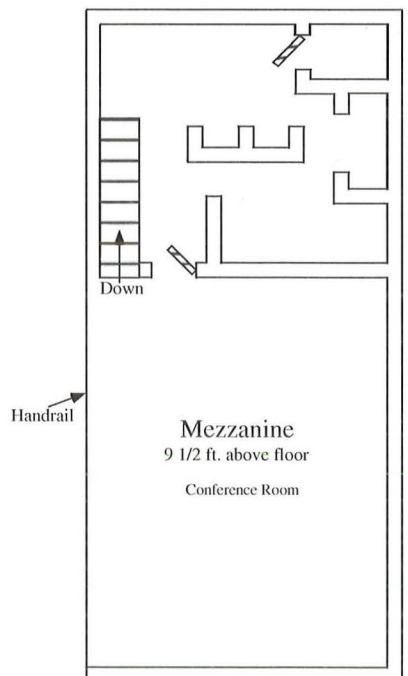
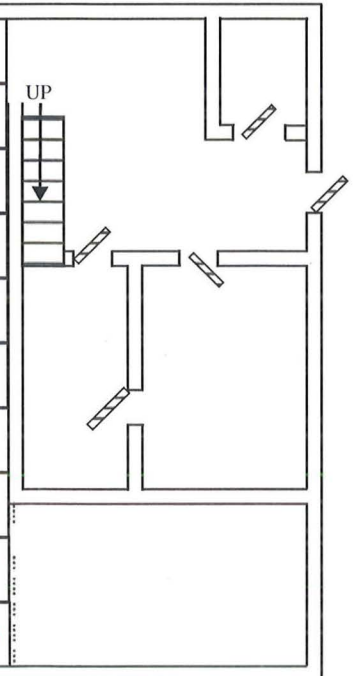
Overall Bldg. Dimensions 50 ft. X 250 ft.
221 to LL wall

South End

Batch 5 | Batch 6

61	80	1	20	21	40	41	60	61	80	1	20	21	40	41
62	79	2	19	22	39	42	59	62	79	2	19	22	39	42
63	78	3	18	23	38	43	58	63	78	3	18	23	38	43
64	77	4	17	24	37	44	57	64	77	4	17	24	37	44
65	76	5	16	25	36	45	56	65	76	5	16	25	36	45
66	75	6	15	26	35	46	55	66	75	6	15	26	35	46
67	74	7	14	27	34	47	54	67	74	7	14	27	34	47
68	73	8	13	28	33	48	53	68	73	8	13	28	33	48
69	72	9	12	29	32	49	52	69	72	9	12	29	32	49
70	71	10	11	30	31	50	51	70	71	10	11	30	31	50

165 180 195 210 225



*DATE WIPES TAKEN
 3/24/22
 JOE DE LUCA / CALEB McC...
 DATE WHITE (ASSISTED)*



RAF Wipe Count Request Form

Date Submitted 3/22/2022

General Location of Wipes Meson Assembly Building Batch #1

Who Took Wipes Jose De L a O Ext. x2557

Number of Wipes 80 Date Wipes Taken 3/22/2022

Count Comments or Requests To be counted for Alpha Beta

Results To: (Print Full Name)

Jose De La O delao@fnal.gov

- Place all wipes in numerical order in a ziplock bag.
- Attach Count Request Form to outside of bag.
- DO NOT use staples.
- Include no more than 80 wipes per Count Request.

RAF USE ONLY

Received By [Signature] Quantity 80 Date/Time 3/22/22 13:10 Group-Number A-9

Accelerator Div. Wipe Report

Tuesday, March 22, 2022

Location:	Taken By:	Date:	Counted By:	CC:
Batch ID: Wipes - AD - 20220322175530	Count Time: 1.0 min.	Count Mode: Simultaneous	Operating Volts: 1425	
Count Date: 3/22/2022	Daily Bkgd Count Time: 10 min.	Geometry: Swipe/Smear	Plateau Set: 44	
FNAL Alpha Eff: 11.43	Alpha Bkgd Rate: 0.10 ± 0.10 CPM	Alpha Count Ld = 3.82 CPM	Device: S5-XLB	
FNAL Beta Eff: 15.43	Beta Bkgd Rate: 2.00 ± 0.45 CPM	Beta-Gamma Count Ld = 7.62 CPM	Beta-Gamma Ld = 49.38 DPM	

Wipe #	Carrier #	<u>Alpha</u> <u>Gross CPM</u>	<u>Beta-Gamma</u> <u>Gross CPM</u>	<u>Alpha</u> <u>Net CPM</u>	<u>Beta-Gamma</u> <u>Net CPM</u>	<u>Alpha</u> <u>Net DPM</u>	<u>Beta-Gamma</u> <u>Net DPM</u>	<u>Alpha</u> <u>Net nCi</u>	<u>Beta-Gamma</u> <u>Net nCi</u>	<u>Flags</u>
1	9	0.0	3.0	0.0	1.0	0.0	6.5	0.00	0.00	
2	21	0.0	2.0	0.0	0.0	0.0	0.0	0.00	0.00	
3	121	0.0	3.0	0.0	1.0	0.0	6.5	0.00	0.00	
4	77	0.0	2.0	0.0	0.0	0.0	0.0	0.00	0.00	
5	31	0.0	3.0	0.0	1.0	0.0	6.5	0.00	0.00	
6	8	0.0	4.0	0.0	2.0	0.0	13.0	0.00	0.01	
7	91	0.0	0.0	0.0	0.0	0.0	0.0	0.00	0.00	
8	94	0.0	3.0	0.0	1.0	0.0	6.5	0.00	0.00	
9	92	0.0	1.0	0.0	0.0	0.0	0.0	0.00	0.00	
10	26	0.0	2.0	0.0	0.0	0.0	0.0	0.00	0.00	
11	48	0.0	2.0	0.0	0.0	0.0	0.0	0.00	0.00	
12	2	0.0	2.0	0.0	0.0	0.0	0.0	0.00	0.00	
13	28	0.0	0.0	0.0	0.0	0.0	0.0	0.00	0.00	
14	93	0.0	3.0	0.0	1.0	0.0	6.5	0.00	0.00	
15	103	0.0	4.0	0.0	2.0	0.0	13.0	0.00	0.01	
16	84	0.0	0.0	0.0	0.0	0.0	0.0	0.00	0.00	
17	102	0.0	1.0	0.0	0.0	0.0	0.0	0.00	0.00	
18	69	0.0	1.0	0.0	0.0	0.0	0.0	0.00	0.00	
19	6	0.0	6.0	0.0	4.0	0.0	25.9	0.00	0.01	
20	107	0.0	3.0	0.0	1.0	0.0	6.5	0.00	0.00	
21	53	0.0	2.0	0.0	0.0	0.0	0.0	0.00	0.00	
22	30	0.0	2.0	0.0	0.0	0.0	0.0	0.00	0.00	
23	54	0.0	2.0	0.0	0.0	0.0	0.0	0.00	0.00	
24	78	0.0	0.0	0.0	0.0	0.0	0.0	0.00	0.00	
25	29	0.0	5.0	0.0	3.0	0.0	19.4	0.00	0.01	
26	105	0.0	4.0	0.0	2.0	0.0	13.0	0.00	0.01	
27	95	0.0	0.0	0.0	0.0	0.0	0.0	0.00	0.00	
28	109	0.0	2.0	0.0	0.0	0.0	0.0	0.00	0.00	
29	72	0.0	4.0	0.0	2.0	0.0	13.0	0.00	0.01	
30	112	0.0	3.0	0.0	1.0	0.0	6.5	0.00	0.00	
31	23	1.0	1.0	0.9	0.0	7.9	0.0	0.00	0.00	
32	1	0.0	1.0	0.0	0.0	0.0	0.0	0.00	0.00	
33	24	0.0	1.0	0.0	0.0	0.0	0.0	0.00	0.00	

Accelerator Div. Wipe Report

Tuesday, March 22, 2022

<u>Wipe #</u>	<u>Carrier #</u>	<u>Alpha Gross CPM</u>	<u>Beta-Gamma Gross CPM</u>	<u>Alpha Net CPM</u>	<u>Beta-Gamma Net CPM</u>	<u>Alpha Net DPM</u>	<u>Beta-Gamma Net DPM</u>	<u>Alpha Net nCi</u>	<u>Beta-Gamma Net nCi</u>	<u>Flags</u>
34	46	0.0	3.0	0.0	1.0	0.0	6.5	0.00	0.00	
35	89	0.0	2.0	0.0	0.0	0.0	0.0	0.00	0.00	
36	118	1.0	2.0	0.9	0.0	7.9	0.0	0.00	0.00	
37	86	0.0	3.0	0.0	1.0	0.0	6.5	0.00	0.00	
38	35	0.0	1.0	0.0	0.0	0.0	0.0	0.00	0.00	
39	114	0.0	2.0	0.0	0.0	0.0	0.0	0.00	0.00	
40	120	0.0	3.0	0.0	1.0	0.0	6.5	0.00	0.00	
41	76	0.0	3.0	0.0	1.0	0.0	6.5	0.00	0.00	
42	71	0.0	2.0	0.0	0.0	0.0	0.0	0.00	0.00	
43	42	0.0	1.0	0.0	0.0	0.0	0.0	0.00	0.00	
44	61	0.0	4.0	0.0	2.0	0.0	13.0	0.00	0.01	
45	34	0.0	6.0	0.0	4.0	0.0	25.9	0.00	0.01	
46	12	0.0	3.0	0.0	1.0	0.0	6.5	0.00	0.00	
47	83	0.0	4.0	0.0	2.0	0.0	13.0	0.00	0.01	
48	46	0.0	3.0	0.0	1.0	0.0	6.5	0.00	0.00	
49	66	0.0	1.0	0.0	0.0	0.0	0.0	0.00	0.00	
50	74	0.0	4.0	0.0	2.0	0.0	13.0	0.00	0.01	
51	10	0.0	2.0	0.0	0.0	0.0	0.0	0.00	0.00	
52	115	0.0	3.0	0.0	1.0	0.0	6.5	0.00	0.00	
53	7	0.0	1.0	0.0	0.0	0.0	0.0	0.00	0.00	
54	17	0.0	4.0	0.0	2.0	0.0	13.0	0.00	0.01	
55	88	0.0	3.0	0.0	1.0	0.0	6.5	0.00	0.00	
56	82	0.0	2.0	0.0	0.0	0.0	0.0	0.00	0.00	
57	74	0.0	2.0	0.0	0.0	0.0	0.0	0.00	0.00	
58	27	0.0	1.0	0.0	0.0	0.0	0.0	0.00	0.00	
59	111	0.0	4.0	0.0	2.0	0.0	13.0	0.00	0.01	
60	87	0.0	3.0	0.0	1.0	0.0	6.5	0.00	0.00	
61	33	0.0	3.0	0.0	1.0	0.0	6.5	0.00	0.00	
62	51	0.0	1.0	0.0	0.0	0.0	0.0	0.00	0.00	
63	8	0.0	2.0	0.0	0.0	0.0	0.0	0.00	0.00	
64	57	0.0	1.0	0.0	0.0	0.0	0.0	0.00	0.00	
65	43	0.0	4.0	0.0	2.0	0.0	13.0	0.00	0.01	
66	4	0.0	4.0	0.0	2.0	0.0	13.0	0.00	0.01	
67	96	0.0	3.0	0.0	1.0	0.0	6.5	0.00	0.00	
68	65	0.0	1.0	0.0	0.0	0.0	0.0	0.00	0.00	
69	18	1.0	1.0	0.9	0.0	7.9	0.0	0.00	0.00	
70	104	0.0	2.0	0.0	0.0	0.0	0.0	0.00	0.00	
71	5	1.0	2.0	0.9	0.0	7.9	0.0	0.00	0.00	
72	81	0.0	5.0	0.0	3.0	0.0	19.4	0.00	0.01	

Accelerator Div. Wipe Report

Tuesday, March 22, 2022

<u>Wipe #</u>	<u>Carrier #</u>	<u>Alpha Gross CPM</u>	<u>Beta-Gamma Gross CPM</u>	<u>Alpha Net CPM</u>	<u>Beta-Gamma Net CPM</u>	<u>Alpha Net DPM</u>	<u>Beta-Gamma Net DPM</u>	<u>Alpha Net nCi</u>	<u>Beta-Gamma Net nCi</u>	<u>Flags</u>
73	62	0.0	2.0	0.0	0.0	0.0	0.0	0.00	0.00	
74	49	0.0	1.0	0.0	0.0	0.0	0.0	0.00	0.00	
75	25	0.0	0.0	0.0	0.0	0.0	0.0	0.00	0.00	
76	38	0.0	1.0	0.0	0.0	0.0	0.0	0.00	0.00	
77	19	0.0	1.0	0.0	0.0	0.0	0.0	0.00	0.00	
78	101	0.0	4.0	0.0	2.0	0.0	13.0	0.00	0.01	
79	68	0.0	2.0	0.0	0.0	0.0	0.0	0.00	0.00	
80	85	0.0	1.0	0.0	0.0	0.0	0.0	0.00	0.00	



RAF Wipe Count Request Form

Date Submitted 3/22/2022

General Location of Wipes Meson Assembly Building Batch #2

Who Took Wipes Jose De L a O Ext. x2557

Number of Wipes 80 Date Wipes Taken 3/22/2022

Count Comments or Requests To be counted for Alpha Beta

Results To: (Print Full Name)

Jose De La O delao@fnal.gov

- Place all wipes in numerical order in a ziplock bag.
- Attach Count Request Form to outside of bag.
- DO NOT use staples.
- Include no more than 80 wipes per Count Request.

RAF USE ONLY			
Received By <u>z/febz</u>	Quantity <u>80</u>	Date/Time <u>3/22/22 13:10</u>	Group-Number _____

A-119

Accelerator Div. Wipe Report

Wednesday, March 23, 2022

Location:	Taken By:	Date:	Counted By:	CC:
Batch ID: Wipes - AD - 20220323155009	Count Time : 1.0 min.	Count Mode : Simultaneous	Operating Volts : 1425	
Count Date: 3/23/2022	Daily Bkgd Count Time: 10 min.	Geometry : Swipe/Smear	Plateau Set: 44	
FNAL Alpha Eff : 11.43	Alpha Bkgd Rate : 0.10 ± 0.10 CPM	Alpha Count Ld = 3.82 CPM	Device : S5-XLB	
FNAL Beta Eff : 15.43	Beta Bkgd Rate : 1.80 ± 0.42 CPM	Beta-Gamma Count Ld = 7.37 CPM	Beta-Gamma Ld = 47.75 DPM	

Wipe #	Carrier #	Alpha Gross CPM	Beta-Gamma Gross CPM	Alpha Net CPM	Beta-Gamma Net CPM	Alpha Net DPM	Beta-Gamma Net DPM	Alpha Net nCi	Beta-Gamma Net nCi	Flags
1	119	0.0	2.0	0.0	0.2	0.0	1.3	0.00	0.00	
2	121	0.0	2.0	0.0	0.2	0.0	1.3	0.00	0.00	
3	21	0.0	1.0	0.0	0.0	0.0	0.0	0.00	0.00	
4	9	0.0	7.0	0.0	5.2	0.0	33.7	0.00	0.02	
5	77	0.0	0.0	0.0	0.0	0.0	0.0	0.00	0.00	
6	92	0.0	1.0	0.0	0.0	0.0	0.0	0.00	0.00	
7	94	0.0	2.0	0.0	0.2	0.0	1.3	0.00	0.00	
8	91	0.0	0.0	0.0	0.0	0.0	0.0	0.00	0.00	
9	8	0.0	2.0	0.0	0.2	0.0	1.3	0.00	0.00	
10	31	0.0	3.0	0.0	1.2	0.0	7.8	0.00	0.00	
11	28	1.0	2.0	0.9	0.2	7.9	1.3	0.00	0.00	
12	2	0.0	3.0	0.0	1.2	0.0	7.8	0.00	0.00	
13	48	0.0	1.0	0.0	0.0	0.0	0.0	0.00	0.00	
14	26	0.0	1.0	0.0	0.0	0.0	0.0	0.00	0.00	
15	120	0.0	5.0	0.0	3.2	0.0	20.7	0.00	0.01	
16	114	1.0	1.0	0.9	0.0	7.9	0.0	0.00	0.00	
17	35	0.0	4.0	0.0	2.2	0.0	14.3	0.00	0.01	
18	86	0.0	2.0	0.0	0.2	0.0	1.3	0.00	0.00	
19	84	0.0	0.0	0.0	0.0	0.0	0.0	0.00	0.00	
20	103	0.0	3.0	0.0	1.2	0.0	7.8	0.00	0.00	
21	93	0.0	4.0	0.0	2.2	0.0	14.3	0.00	0.01	
22	107	0.0	3.0	0.0	1.2	0.0	7.8	0.00	0.00	
23	6	0.0	4.0	0.0	2.2	0.0	14.3	0.00	0.01	
24	69	0.0	4.0	0.0	2.2	0.0	14.3	0.00	0.01	
25	102	1.0	0.0	0.9	0.0	7.9	0.0	0.00	0.00	
26	78	0.0	4.0	0.0	2.2	0.0	14.3	0.00	0.01	
27	54	1.0	2.0	0.9	0.2	7.9	1.3	0.00	0.00	
28	30	0.0	0.0	0.0	0.0	0.0	0.0	0.00	0.00	
29	53	0.0	1.0	0.0	0.0	0.0	0.0	0.00	0.00	
30	109	0.0	5.0	0.0	3.2	0.0	20.7	0.00	0.01	
31	95	0.0	1.0	0.0	0.0	0.0	0.0	0.00	0.00	
32	105	0.0	2.0	0.0	0.2	0.0	1.3	0.00	0.00	
33	23	0.0	3.0	0.0	1.2	0.0	7.8	0.00	0.00	

Accelerator Div. Wipe Report

Wednesday, March 23, 2022

<u>Wipe #</u>	<u>Carrier #</u>	<u>Alpha Gross CPM</u>	<u>Beta-Gamma Gross CPM</u>	<u>Alpha Net CPM</u>	<u>Beta-Gamma Net CPM</u>	<u>Alpha Net DPM</u>	<u>Beta-Gamma Net DPM</u>	<u>Alpha Net nCi</u>	<u>Beta-Gamma Net nCi</u>	<u>Flags</u>
34	112	0.0	1.0	0.0	0.0	0.0	0.0	0.00	0.00	
35	72	0.0	2.0	0.0	0.2	0.0	1.3	0.00	0.00	
36	118	0.0	3.0	0.0	1.2	0.0	7.8	0.00	0.00	
37	89	0.0	0.0	0.0	0.0	0.0	0.0	0.00	0.00	
38	46	0.0	3.0	0.0	1.2	0.0	7.8	0.00	0.00	
39	24	0.0	1.0	0.0	0.0	0.0	0.0	0.00	0.00	
40	83	0.0	2.0	0.0	0.2	0.0	1.3	0.00	0.00	
41	12	0.0	1.0	0.0	0.0	0.0	0.0	0.00	0.00	
42	29	0.0	0.0	0.0	0.0	0.0	0.0	0.00	0.00	
43	1	0.0	3.0	0.0	1.2	0.0	7.8	0.00	0.00	
44	34	0.0	2.0	0.0	0.2	0.0	1.3	0.00	0.00	
45	61	1.0	5.0	0.9	3.2	7.9	20.7	0.00	0.01	
46	42	0.0	2.0	0.0	0.2	0.0	1.3	0.00	0.00	
47	71	0.0	3.0	0.0	1.2	0.0	7.8	0.00	0.00	
48	66	0.0	3.0	0.0	1.2	0.0	7.8	0.00	0.00	
49	46	0.0	2.0	0.0	0.2	0.0	1.3	0.00	0.00	
50	115	0.0	1.0	0.0	0.0	0.0	0.0	0.00	0.00	
51	10	0.0	2.0	0.0	0.2	0.0	1.3	0.00	0.00	
52	74	0.0	3.0	0.0	1.2	0.0	7.8	0.00	0.00	
53	82	0.0	1.0	0.0	0.0	0.0	0.0	0.00	0.00	
54	88	0.0	1.0	0.0	0.0	0.0	0.0	0.00	0.00	
55	17	0.0	1.0	0.0	0.0	0.0	0.0	0.00	0.00	
56	7	0.0	2.0	0.0	0.2	0.0	1.3	0.00	0.00	
57	111	1.0	0.0	0.9	0.0	7.9	0.0	0.00	0.00	
58	27	0.0	1.0	0.0	0.0	0.0	0.0	0.00	0.00	
59	87	0.0	3.0	0.0	1.2	0.0	7.8	0.00	0.00	
60	33	0.0	3.0	0.0	1.2	0.0	7.8	0.00	0.00	
61	51	1.0	1.0	0.9	0.0	7.9	0.0	0.00	0.00	
62	96	0.0	2.0	0.0	0.2	0.0	1.3	0.00	0.00	
63	4	1.0	1.0	0.9	0.0	7.9	0.0	0.00	0.00	
64	8	0.0	2.0	0.0	0.2	0.0	1.3	0.00	0.00	
65	65	0.0	3.0	0.0	1.2	0.0	7.8	0.00	0.00	
66	18	0.0	4.0	0.0	2.2	0.0	14.3	0.00	0.01	
67	104	0.0	3.0	0.0	1.2	0.0	7.8	0.00	0.00	
68	5	0.0	2.0	0.0	0.2	0.0	1.3	0.00	0.00	
69	81	0.0	1.0	0.0	0.0	0.0	0.0	0.00	0.00	
70	62	0.0	2.0	0.0	0.2	0.0	1.3	0.00	0.00	
71	43	0.0	1.0	0.0	0.0	0.0	0.0	0.00	0.00	
72	57	0.0	2.0	0.0	0.2	0.0	1.3	0.00	0.00	

Accelerator Div. Wipe Report

Wednesday, March 23, 2022

<u>Wipe #</u>	<u>Carrier #</u>	<u>Alpha Gross CPM</u>	<u>Beta-Gamma Gross CPM</u>	<u>Alpha Net CPM</u>	<u>Beta-Gamma Net CPM</u>	<u>Alpha Net DPM</u>	<u>Beta-Gamma Net DPM</u>	<u>Alpha Net nCi</u>	<u>Beta-Gamma Net nCi</u>	<u>Flags</u>
73	76	0.0	1.0	0.0	0.0	0.0	0.0	0.00	0.00	
74	74	0.0	3.0	0.0	1.2	0.0	7.8	0.00	0.00	
75	49	1.0	2.0	0.9	0.2	7.9	1.3	0.00	0.00	
76	25	0.0	0.0	0.0	0.0	0.0	0.0	0.00	0.00	
77	38	0.0	1.0	0.0	0.0	0.0	0.0	0.00	0.00	
78	19	0.0	2.0	0.0	0.2	0.0	1.3	0.00	0.00	
79	101	0.0	3.0	0.0	1.2	0.0	7.8	0.00	0.00	
80	68	0.0	2.0	0.0	0.2	0.0	1.3	0.00	0.00	



RAF Wipe Count Request Form

Date Submitted 3/22/2022

General Location of Wipes Meson Assembly Building Batch #3

Who Took Wipes Jose De L a O Ext. x2557

Number of Wipes 80 Date Wipes Taken 3/22/2022

Count Comments or Requests To be counted for Alpha Beta

Results To: (Print Full Name)

Jose De La O delao@fnal.gov

- Place all wipes in numerical order in a ziplock bag.
- Attach Count Request Form to outside of bag.
- DO NOT use staples.
- Include no more than 80 wipes per Count Request.

RAF USE ONLY			
Received By <u>3/22/22</u>	Quantity <u>80</u>	Date/Time <u>3/22/22 13:10</u>	Group-Number <u>A-9</u>

Accelerator Div. Wipe Report

Wednesday, March 23, 2022

Location:	Taken By:	Date:	Counted By:	CC:
Batch ID: Wipes - AD - 20220323175801	Count Time: 1.0 min.	Count Mode: Simultaneous	Operating Volts: 1425	
Count Date: 3/23/2022	Daily Bkgd Count Time: 10 min.	Geometry: Swipe/Smear	Plateau Set: 44	
FNAL Alpha Eff: 11.43	Alpha Bkgd Rate: 0.10 ± 0.10 CPM	Alpha Count Ld = 3.82 CPM	Device: S5-XLB	
FNAL Beta Eff: 15.43	Beta Bkgd Rate: 1.80 ± 0.42 CPM	Beta-Gamma Count Ld = 7.37 CPM	Beta-Gamma Ld = 47.75 DPM	

Wipe #	Carrier #	Alpha Gross CPM	Beta-Gamma Gross CPM	Alpha Net CPM	Beta-Gamma Net CPM	Alpha Net DPM	Beta-Gamma Net DPM	Alpha Net nCi	Beta-Gamma Net nCi	Flags
1	9	0.0	2.0	0.0	0.2	0.0	1.3	0.00	0.00	
2	38	1.0	2.0	0.9	0.2	7.9	1.3	0.00	0.00	
3	19	0.0	3.0	0.0	1.2	0.0	7.8	0.00	0.00	
4	101	0.0	2.0	0.0	0.2	0.0	1.3	0.00	0.00	
5	68	0.0	4.0	0.0	2.2	0.0	14.3	0.00	0.01	
6	74	0.0	3.0	0.0	1.2	0.0	7.8	0.00	0.00	
7	49	0.0	2.0	0.0	0.2	0.0	1.3	0.00	0.00	
8	25	0.0	2.0	0.0	0.2	0.0	1.3	0.00	0.00	
9	87	0.0	3.0	0.0	1.2	0.0	7.8	0.00	0.00	
10	33	0.0	1.0	0.0	0.0	0.0	0.0	0.00	0.00	
11	51	0.0	2.0	0.0	0.2	0.0	1.3	0.00	0.00	
12	96	0.0	5.0	0.0	3.2	0.0	20.7	0.00	0.01	
13	4	0.0	1.0	0.0	0.0	0.0	0.0	0.00	0.00	
14	18	0.0	2.0	0.0	0.2	0.0	1.3	0.00	0.00	
15	104	0.0	3.0	0.0	1.2	0.0	7.8	0.00	0.00	
16	5	0.0	1.0	0.0	0.0	0.0	0.0	0.00	0.00	
17	57	1.0	3.0	0.9	1.2	7.9	7.8	0.00	0.00	
18	81	1.0	2.0	0.9	0.2	7.9	1.3	0.00	0.00	
19	62	0.0	5.0	0.0	3.2	0.0	20.7	0.00	0.01	
20	43	0.0	3.0	0.0	1.2	0.0	7.8	0.00	0.00	
21	10	0.0	2.0	0.0	0.2	0.0	1.3	0.00	0.00	
22	74	1.0	4.0	0.9	2.2	7.9	14.3	0.00	0.01	
23	82	0.0	1.0	0.0	0.0	0.0	0.0	0.00	0.00	
24	111	0.0	5.0	0.0	3.2	0.0	20.7	0.00	0.01	
25	27	0.0	1.0	0.0	0.0	0.0	0.0	0.00	0.00	
26	46	0.0	3.0	0.0	1.2	0.0	7.8	0.00	0.00	
27	115	0.0	0.0	0.0	0.0	0.0	0.0	0.00	0.00	
28	88	0.0	2.0	0.0	0.2	0.0	1.3	0.00	0.00	
29	17	0.0	1.0	0.0	0.0	0.0	0.0	0.00	0.00	
30	7	0.0	2.0	0.0	0.2	0.0	1.3	0.00	0.00	
31	112	0.0	3.0	0.0	1.2	0.0	7.8	0.00	0.00	
32	72	0.0	0.0	0.0	0.0	0.0	0.0	0.00	0.00	
33	118	1.0	4.0	0.9	2.2	7.9	14.3	0.00	0.01	

Accelerator Div. Wipe Report

Wednesday, March 23, 2022

<u>Wipe #</u>	<u>Carrier #</u>	<u>Alpha Gross CPM</u>	<u>Beta-Gamma Gross CPM</u>	<u>Alpha Net CPM</u>	<u>Beta-Gamma Net CPM</u>	<u>Alpha Net DPM</u>	<u>Beta-Gamma Net DPM</u>	<u>Alpha Net nCi</u>	<u>Beta-Gamma Net nCi</u>	<u>Flags</u>
34	76	0.0	0.0	0.0	0.0	0.0	0.0	0.00	0.00	
35	8	0.0	3.0	0.0	1.2	0.0	7.8	0.00	0.00	
36	66	0.0	4.0	0.0	2.2	0.0	14.3	0.00	0.01	
37	24	0.0	2.0	0.0	0.2	0.0	1.3	0.00	0.00	
38	6	0.0	3.0	0.0	1.2	0.0	7.8	0.00	0.00	
39	30	0.0	4.0	0.0	2.2	0.0	14.3	0.00	0.01	
40	84	0.0	1.0	0.0	0.0	0.0	0.0	0.00	0.00	
41	103	0.0	2.0	0.0	0.2	0.0	1.3	0.00	0.00	
42	93	0.0	4.0	0.0	2.2	0.0	14.3	0.00	0.01	
43	107	0.0	0.0	0.0	0.0	0.0	0.0	0.00	0.00	
44	69	0.0	2.0	0.0	0.2	0.0	1.3	0.00	0.00	
45	102	0.0	1.0	0.0	0.0	0.0	0.0	0.00	0.00	
46	78	0.0	2.0	0.0	0.2	0.0	1.3	0.00	0.00	
47	89	0.0	2.0	0.0	0.2	0.0	1.3	0.00	0.00	
48	46	0.0	1.0	0.0	0.0	0.0	0.0	0.00	0.00	
49	83	0.0	2.0	0.0	0.2	0.0	1.3	0.00	0.00	
50	12	0.0	4.0	0.0	2.2	0.0	14.3	0.00	0.01	
51	29	1.0	2.0	0.9	0.2	7.9	1.3	0.00	0.00	
52	1	0.0	2.0	0.0	0.2	0.0	1.3	0.00	0.00	
53	71	0.0	1.0	0.0	0.0	0.0	0.0	0.00	0.00	
54	34	0.0	1.0	0.0	0.0	0.0	0.0	0.00	0.00	
55	61	0.0	1.0	0.0	0.0	0.0	0.0	0.00	0.00	
56	42	0.0	2.0	0.0	0.2	0.0	1.3	0.00	0.00	
57	65	1.0	4.0	0.9	2.2	7.9	14.3	0.00	0.01	
58	28	0.0	4.0	0.0	2.2	0.0	14.3	0.00	0.01	
59	2	0.0	0.0	0.0	0.0	0.0	0.0	0.00	0.00	
60	48	0.0	2.0	0.0	0.2	0.0	1.3	0.00	0.00	
61	26	0.0	0.0	0.0	0.0	0.0	0.0	0.00	0.00	
62	119	0.0	3.0	0.0	1.2	0.0	7.8	0.00	0.00	
63	121	0.0	2.0	0.0	0.2	0.0	1.3	0.00	0.00	
64	21	0.0	3.0	0.0	1.2	0.0	7.8	0.00	0.00	
65	77	1.0	0.0	0.9	0.0	7.9	0.0	0.00	0.00	
66	54	0.0	5.0	0.0	3.2	0.0	20.7	0.00	0.01	
67	53	1.0	1.0	0.9	0.0	7.9	0.0	0.00	0.00	
68	109	0.0	2.0	0.0	0.2	0.0	1.3	0.00	0.00	
69	95	0.0	1.0	0.0	0.0	0.0	0.0	0.00	0.00	
70	105	0.0	1.0	0.0	0.0	0.0	0.0	0.00	0.00	
71	23	0.0	3.0	0.0	1.2	0.0	7.8	0.00	0.00	
72	120	0.0	1.0	0.0	0.0	0.0	0.0	0.00	0.00	

Accelerator Div. Wipe Report

Wednesday, March 23, 2022

<u>Wipe #</u>	<u>Carrier #</u>	<u>Alpha Gross CPM</u>	<u>Beta-Gamma Gross CPM</u>	<u>Alpha Net CPM</u>	<u>Beta-Gamma Net CPM</u>	<u>Alpha Net DPM</u>	<u>Beta-Gamma Net DPM</u>	<u>Alpha Net nCi</u>	<u>Beta-Gamma Net nCi</u>	<u>Flags</u>
73	114	0.0	1.0	0.0	0.0	0.0	0.0	0.00	0.00	
74	35	1.0	4.0	0.9	2.2	7.9	14.3	0.00	0.01	
75	86	0.0	2.0	0.0	0.2	0.0	1.3	0.00	0.00	
76	92	0.0	1.0	0.0	0.0	0.0	0.0	0.00	0.00	
77	94	0.0	3.0	0.0	1.2	0.0	7.8	0.00	0.00	
78	91	0.0	3.0	0.0	1.2	0.0	7.8	0.00	0.00	
79	8	0.0	2.0	0.0	0.2	0.0	1.3	0.00	0.00	
80	31	0.0	0.0	0.0	0.0	0.0	0.0	0.00	0.00	



RAF Wipe Count Request Form

Date Submitted 3/22/2022

General Location of Wipes Meson Assembly Building Batch #4

Who Took Wipes Jose De L a O Ext. x2557

Number of Wipes 80 Date Wipes Taken 3/22/2022

Count Comments or Requests To be counted for Alpha Beta

Results To: (Print Full Name)

Jose De La O delao@fnal.gov

- Place all wipes in numerical order in a ziplock bag.
- Attach Count Request Form to outside of bag.
- DO NOT use staples.
- Include no more than 80 wipes per Count Request.

RAF USE ONLY			
Received By <u>[Signature]</u>	Quantity <u>80</u>	Date/Time <u>3/22/22 13:10</u>	Group-Number _____

A-45

Accelerator Div. Wipe Report

Thursday, March 24, 2022

Location:	Taken By:	Date:	Counted By:	CC:
Batch ID: Wipes - AD - 20220324125107	Count Time: 1.0 min.	Count Mode: Simultaneous	Operating Volts: 1425	
Count Date: 3/24/2022	Daily Bkgd Count Time: 10 min.	Geometry: Swipe/Smear	Plateau Set: 44	
FNAL Alpha Eff: 11.43	Alpha Bkgd Rate: 0.10 ± 0.10 CPM	Alpha Count Ld = 3.82 CPM	Device: S5-XLB	
FNAL Beta Eff: 15.43	Beta Bkgd Rate: 1.60 ± 0.40 CPM	Beta-Gamma Count Ld = 7.10 CPM	Beta-Gamma Ld = 46.03 DPM	

Wipe #	Carrier #	<u>Alpha</u> Gross CPM	<u>Beta-Gamma</u> Gross CPM	<u>Alpha</u> Net CPM	<u>Beta-Gamma</u> Net CPM	<u>Alpha</u> Net DPM	<u>Beta-Gamma</u> Net DPM	<u>Alpha</u> Net nCi	<u>Beta-Gamma</u> Net nCi	<u>Flags</u>
1	45	1.0	1.0	0.9	0.0	7.9	0.0	0.00	0.00	
2	15	0.0	2.0	0.0	0.4	0.0	2.6	0.00	0.00	
3	41	1.0	1.0	0.9	0.0	7.9	0.0	0.00	0.00	
4	113	0.0	1.0	0.0	0.0	0.0	0.0	0.00	0.00	
5	110	0.0	5.0	0.0	3.4	0.0	22.0	0.00	0.01	
6	22	0.0	2.0	0.0	0.4	0.0	2.6	0.00	0.00	
7	44	0.0	2.0	0.0	0.4	0.0	2.6	0.00	0.00	
8	60	0.0	4.0	0.0	2.4	0.0	15.6	0.00	0.01	
9	132	0.0	0.0	0.0	0.0	0.0	0.0	0.00	0.00	
10	39	0.0	0.0	0.0	0.0	0.0	0.0	0.00	0.00	
11	37	0.0	3.0	0.0	1.4	0.0	9.1	0.00	0.00	
12	29	0.0	0.0	0.0	0.0	0.0	0.0	0.00	0.00	
13	36	0.0	1.0	0.0	0.0	0.0	0.0	0.00	0.00	
14	52	0.0	0.0	0.0	0.0	0.0	0.0	0.00	0.00	
15	32	0.0	4.0	0.0	2.4	0.0	15.6	0.00	0.01	
16	73	0.0	1.0	0.0	0.0	0.0	0.0	0.00	0.00	
17	101	0.0	2.0	0.0	0.4	0.0	2.6	0.00	0.00	
18	19	0.0	2.0	0.0	0.4	0.0	2.6	0.00	0.00	
19	38	0.0	6.0	0.0	4.4	0.0	28.5	0.00	0.01	
20	9	0.0	2.0	0.0	0.4	0.0	2.6	0.00	0.00	
21	25	0.0	2.0	0.0	0.4	0.0	2.6	0.00	0.00	
22	49	0.0	2.0	0.0	0.4	0.0	2.6	0.00	0.00	
23	74	0.0	0.0	0.0	0.0	0.0	0.0	0.00	0.00	
24	68	0.0	1.0	0.0	0.0	0.0	0.0	0.00	0.00	
25	96	0.0	3.0	0.0	1.4	0.0	9.1	0.00	0.00	
26	51	1.0	1.0	0.9	0.0	7.9	0.0	0.00	0.00	
27	33	0.0	4.0	0.0	2.4	0.0	15.6	0.00	0.01	
28	79	0.0	5.0	0.0	3.4	0.0	22.0	0.00	0.01	
29	117	0.0	2.0	0.0	0.4	0.0	2.6	0.00	0.00	
30	67	0.0	1.0	0.0	0.0	0.0	0.0	0.00	0.00	
31	122	0.0	3.0	0.0	1.4	0.0	9.1	0.00	0.00	
32	55	0.0	3.0	0.0	1.4	0.0	9.1	0.00	0.00	
33	87	0.0	3.0	0.0	1.4	0.0	9.1	0.00	0.00	

Accelerator Div. Wipe Report

Thursday, March 24, 2022

<u>Wipe #</u>	<u>Carrier #</u>	<u>Alpha Gross CPM</u>	<u>Beta-Gamma Gross CPM</u>	<u>Alpha Net CPM</u>	<u>Beta-Gamma Net CPM</u>	<u>Alpha Net DPM</u>	<u>Beta-Gamma Net DPM</u>	<u>Alpha Net nCi</u>	<u>Beta-Gamma Net nCi</u>	<u>Flags</u>
34	57	1.0	2.0	0.9	0.4	7.9	2.6	0.00	0.00	
35	5	0.0	3.0	0.0	1.4	0.0	9.1	0.00	0.00	
36	104	0.0	5.0	0.0	3.4	0.0	22.0	0.00	0.01	
37	18	0.0	1.0	0.0	0.0	0.0	0.0	0.00	0.00	
38	4	0.0	2.0	0.0	0.4	0.0	2.6	0.00	0.00	
39	10	0.0	2.0	0.0	0.4	0.0	2.6	0.00	0.00	
40	43	0.0	0.0	0.0	0.0	0.0	0.0	0.00	0.00	
41	62	0.0	2.0	0.0	0.4	0.0	2.6	0.00	0.00	
42	46	0.0	0.0	0.0	0.0	0.0	0.0	0.00	0.00	
43	88	1.0	3.0	0.9	1.4	7.9	9.1	0.00	0.00	
44	115	0.0	1.0	0.0	0.0	0.0	0.0	0.00	0.00	
45	72	0.0	2.0	0.0	0.4	0.0	2.6	0.00	0.00	
46	112	0.0	1.0	0.0	0.0	0.0	0.0	0.00	0.00	
47	7	0.0	1.0	0.0	0.0	0.0	0.0	0.00	0.00	
48	17	0.0	4.0	0.0	2.4	0.0	15.6	0.00	0.01	
49	8	0.0	2.0	0.0	0.4	0.0	2.6	0.00	0.00	
50	76	0.0	0.0	0.0	0.0	0.0	0.0	0.00	0.00	
51	118	0.0	0.0	0.0	0.0	0.0	0.0	0.00	0.00	
52	24	0.0	1.0	0.0	0.0	0.0	0.0	0.00	0.00	
53	66	0.0	2.0	0.0	0.4	0.0	2.6	0.00	0.00	
54	103	0.0	3.0	0.0	1.4	0.0	9.1	0.00	0.00	
55	84	0.0	4.0	0.0	2.4	0.0	15.6	0.00	0.01	
56	30	0.0	3.0	0.0	1.4	0.0	9.1	0.00	0.00	
57	81	0.0	1.0	0.0	0.0	0.0	0.0	0.00	0.00	
58	27	1.0	6.0	0.9	4.4	7.9	28.5	0.00	0.01	
59	6	0.0	3.0	0.0	1.4	0.0	9.1	0.00	0.00	
60	102	0.0	2.0	0.0	0.4	0.0	2.6	0.00	0.00	
61	69	0.0	2.0	0.0	0.4	0.0	2.6	0.00	0.00	
62	107	1.0	3.0	0.9	1.4	7.9	9.1	0.00	0.00	
63	93	0.0	3.0	0.0	1.4	0.0	9.1	0.00	0.00	
64	12	0.0	5.0	0.0	3.4	0.0	22.0	0.00	0.01	
65	83	0.0	3.0	0.0	1.4	0.0	9.1	0.00	0.00	
66	46	0.0	4.0	0.0	2.4	0.0	15.6	0.00	0.01	
67	89	0.0	0.0	0.0	0.0	0.0	0.0	0.00	0.00	
68	78	0.0	1.0	0.0	0.0	0.0	0.0	0.00	0.00	
69	111	1.0	2.0	0.9	0.4	7.9	2.6	0.00	0.00	
70	82	0.0	3.0	0.0	1.4	0.0	9.1	0.00	0.00	
71	74	1.0	3.0	0.9	1.4	7.9	9.1	0.00	0.00	
72	47	0.0	1.0	0.0	0.0	0.0	0.0	0.00	0.00	

Accelerator Div. Wipe Report

Thursday, March 24, 2022

<u>Wipe #</u>	<u>Carrier #</u>	<u>Alpha Gross CPM</u>	<u>Beta-Gamma Gross CPM</u>	<u>Alpha Net CPM</u>	<u>Beta-Gamma Net CPM</u>	<u>Alpha Net DPM</u>	<u>Beta-Gamma Net DPM</u>	<u>Alpha Net nCi</u>	<u>Beta-Gamma Net nCi</u>	<u>Flags</u>
73	1	0.0	2.0	0.0	0.4	0.0	2.6	0.00	0.00	
74	29	0.0	2.0	0.0	0.4	0.0	2.6	0.00	0.00	
75	71	0.0	1.0	0.0	0.0	0.0	0.0	0.00	0.00	
76	61	0.0	0.0	0.0	0.0	0.0	0.0	0.00	0.00	
77	34	0.0	2.0	0.0	0.4	0.0	2.6	0.00	0.00	
78	48	0.0	4.0	0.0	2.4	0.0	15.6	0.00	0.01	
79	2	0.0	2.0	0.0	0.4	0.0	2.6	0.00	0.00	
80	28	0.0	1.0	0.0	0.0	0.0	0.0	0.00	0.00	



RAF Wipe Count Request Form

Date Submitted 3/22/2022

General Location of Wipes Meson Assembly Building Batch #5

Who Took Wipes Jose De L a O Ext. x2557

Number of Wipes 80 Date Wipes Taken 3/22/2022

Count Comments or Requests To be counted for Alpha Beta

Results To: (Print Full Name)

Jose De La O delao@fnal.gov

- Place all wipes in numerical order in a ziplock bag.
- Attach Count Request Form to outside of bag.
- DO NOT use staples.
- Include no more than 80 wipes per Count Request.

RAF USE ONLY

Received By [Signature] Quantity 80 Date/Time 3/22/22 13:10 Group-Number _____

A-11

Accelerator Div. Wipe Report

Monday, March 28, 2022

Location:	Taken By:	Date:	Counted By:	CC:
Batch ID: Wipes - AD - 20220328155314	Count Time: 1.0 min.	Count Mode: Simultaneous	Operating Volts: 1425	
Count Date: 3/28/2022	Daily Bkgd Count Time: 10 min.	Geometry: Swipe/Smear	Plateau Set: 44	
FNAL Alpha Eff: 11.43	Alpha Bkgd Rate: 0.20 ± 0.14 CPM	Alpha Count Ld = 4.27 CPM	Device: S5-XLB	
FNAL Beta Eff: 15.43	Beta Bkgd Rate: 1.40 ± 0.37 CPM	Beta-Gamma Count Ld = 6.82 CPM	Beta-Gamma Ld = 44.19 DPM	

Wipe #	Carrier #	Alpha Gross CPM	Beta-Gamma Gross CPM	Alpha Net CPM	Beta-Gamma Net CPM	Alpha Net DPM	Beta-Gamma Net DPM	Alpha Net nCi	Beta-Gamma Net nCi	Flags
1	11	0.0	1.0	0.0	0.0	0.0	0.0	0.00	0.00	
2	44	0.0	3.0	0.0	1.6	0.0	10.4	0.00	0.00	
3	45	0.0	2.0	0.0	0.6	0.0	3.9	0.00	0.00	
4	15	0.0	0.0	0.0	0.0	0.0	0.0	0.00	0.00	
5	37	0.0	0.0	0.0	0.0	0.0	0.0	0.00	0.00	
6	39	0.0	4.0	0.0	2.6	0.0	16.9	0.00	0.01	
7	132	0.0	0.0	0.0	0.0	0.0	0.0	0.00	0.00	
8	60	0.0	0.0	0.0	0.0	0.0	0.0	0.00	0.00	
9	22	0.0	2.0	0.0	0.6	0.0	3.9	0.00	0.00	
10	110	0.0	1.0	0.0	0.0	0.0	0.0	0.00	0.00	
11	113	0.0	0.0	0.0	0.0	0.0	0.0	0.00	0.00	
12	41	0.0	4.0	0.0	2.6	0.0	16.9	0.00	0.01	
13	32	0.0	1.0	0.0	0.0	0.0	0.0	0.00	0.00	
14	52	0.0	4.0	0.0	2.6	0.0	16.9	0.00	0.01	
15	36	0.0	1.0	0.0	0.0	0.0	0.0	0.00	0.00	
16	29	0.0	0.0	0.0	0.0	0.0	0.0	0.00	0.00	
17	9	0.0	3.0	0.0	1.6	0.0	10.4	0.00	0.00	
18	51	0.0	3.0	0.0	1.6	0.0	10.4	0.00	0.00	
19	96	0.0	5.0	0.0	3.6	0.0	23.3	0.00	0.01	
20	68	0.0	3.0	0.0	1.6	0.0	10.4	0.00	0.00	
21	67	0.0	2.0	0.0	0.6	0.0	3.9	0.00	0.00	
22	117	0.0	5.0	0.0	3.6	0.0	23.3	0.00	0.01	
23	79	0.0	1.0	0.0	0.0	0.0	0.0	0.00	0.00	
24	33	0.0	4.0	0.0	2.6	0.0	16.9	0.00	0.01	
25	122	0.0	2.0	0.0	0.6	0.0	3.9	0.00	0.00	
26	55	0.0	1.0	0.0	0.0	0.0	0.0	0.00	0.00	
27	57	0.0	4.0	0.0	2.6	0.0	16.9	0.00	0.01	
28	87	0.0	2.0	0.0	0.6	0.0	3.9	0.00	0.00	
29	10	1.0	0.0	0.8	0.0	7.0	0.0	0.00	0.00	
30	4	0.0	1.0	0.0	0.0	0.0	0.0	0.00	0.00	
31	74	0.0	1.0	0.0	0.0	0.0	0.0	0.00	0.00	
32	49	0.0	1.0	0.0	0.0	0.0	0.0	0.00	0.00	
33	25	0.0	1.0	0.0	0.0	0.0	0.0	0.00	0.00	

Accelerator Div. Wipe Report

Monday, March 28, 2022

<u>Wipe #</u>	<u>Carrier #</u>	<u>Alpha Gross CPM</u>	<u>Beta-Gamma Gross CPM</u>	<u>Alpha Net CPM</u>	<u>Beta-Gamma Net CPM</u>	<u>Alpha Net DPM</u>	<u>Beta-Gamma Net DPM</u>	<u>Alpha Net nCi</u>	<u>Beta-Gamma Net nCi</u>	<u>Flags</u>
34	18	0.0	0.0	0.0	0.0	0.0	0.0	0.00	0.00	
35	104	0.0	1.0	0.0	0.0	0.0	0.0	0.00	0.00	
36	5	0.0	4.0	0.0	2.6	0.0	16.9	0.00	0.01	
37	46	0.0	1.0	0.0	0.0	0.0	0.0	0.00	0.00	
38	62	0.0	2.0	0.0	0.6	0.0	3.9	0.00	0.00	
39	43	0.0	4.0	0.0	2.6	0.0	16.9	0.00	0.01	
40	7	0.0	2.0	0.0	0.6	0.0	3.9	0.00	0.00	
41	112	0.0	2.0	0.0	0.6	0.0	3.9	0.00	0.00	
42	72	0.0	2.0	0.0	0.6	0.0	3.9	0.00	0.00	
43	115	0.0	1.0	0.0	0.0	0.0	0.0	0.00	0.00	
44	88	1.0	4.0	0.8	2.6	7.0	16.9	0.00	0.01	
45	38	0.0	3.0	0.0	1.6	0.0	10.4	0.00	0.00	
46	19	0.0	2.0	0.0	0.6	0.0	3.9	0.00	0.00	
47	101	0.0	2.0	0.0	0.6	0.0	3.9	0.00	0.00	
48	73	0.0	2.0	0.0	0.6	0.0	3.9	0.00	0.00	
49	8	0.0	1.0	0.0	0.0	0.0	0.0	0.00	0.00	
50	17	0.0	0.0	0.0	0.0	0.0	0.0	0.00	0.00	
51	66	0.0	0.0	0.0	0.0	0.0	0.0	0.00	0.00	
52	24	0.0	2.0	0.0	0.6	0.0	3.9	0.00	0.00	
53	118	0.0	2.0	0.0	0.6	0.0	3.9	0.00	0.00	
54	76	0.0	2.0	0.0	0.6	0.0	3.9	0.00	0.00	
55	84	0.0	4.0	0.0	2.6	0.0	16.9	0.00	0.01	
56	103	0.0	3.0	0.0	1.6	0.0	10.4	0.00	0.00	
57	6	0.0	4.0	0.0	2.6	0.0	16.9	0.00	0.01	
58	27	0.0	2.0	0.0	0.6	0.0	3.9	0.00	0.00	
59	81	0.0	2.0	0.0	0.6	0.0	3.9	0.00	0.00	
60	30	0.0	2.0	0.0	0.6	0.0	3.9	0.00	0.00	
61	93	1.0	1.0	0.8	0.0	7.0	0.0	0.00	0.00	
62	107	0.0	0.0	0.0	0.0	0.0	0.0	0.00	0.00	
63	69	0.0	1.0	0.0	0.0	0.0	0.0	0.00	0.00	
64	102	0.0	2.0	0.0	0.6	0.0	3.9	0.00	0.00	
65	89	0.0	4.0	0.0	2.6	0.0	16.9	0.00	0.01	
66	61	0.0	1.0	0.0	0.0	0.0	0.0	0.00	0.00	
67	71	0.0	4.0	0.0	2.6	0.0	16.9	0.00	0.01	
68	29	0.0	0.0	0.0	0.0	0.0	0.0	0.00	0.00	
69	1	0.0	1.0	0.0	0.0	0.0	0.0	0.00	0.00	
70	28	0.0	0.0	0.0	0.0	0.0	0.0	0.00	0.00	
71	2	0.0	2.0	0.0	0.6	0.0	3.9	0.00	0.00	
72	48	0.0	0.0	0.0	0.0	0.0	0.0	0.00	0.00	

Accelerator Div. Wipe Report

Monday, March 28, 2022

<u>Wipe #</u>	<u>Carrier #</u>	<u>Alpha Gross CPM</u>	<u>Beta-Gamma Gross CPM</u>	<u>Alpha Net CPM</u>	<u>Beta-Gamma Net CPM</u>	<u>Alpha Net DPM</u>	<u>Beta-Gamma Net DPM</u>	<u>Alpha Net nCi</u>	<u>Beta-Gamma Net nCi</u>	<u>Flags</u>
73	34	0.0	2.0	0.0	0.6	0.0	3.9	0.00	0.00	
74	65	0.0	1.0	0.0	0.0	0.0	0.0	0.00	0.00	
75	47	0.0	2.0	0.0	0.6	0.0	3.9	0.00	0.00	
76	74	0.0	2.0	0.0	0.6	0.0	3.9	0.00	0.00	
77	82	0.0	4.0	0.0	2.6	0.0	16.9	0.00	0.01	
78	111	0.0	3.0	0.0	1.6	0.0	10.4	0.00	0.00	
79	78	0.0	1.0	0.0	0.0	0.0	0.0	0.00	0.00	
80	46	0.0	0.0	0.0	0.0	0.0	0.0	0.00	0.00	



RAF Wipe Count Request Form

Date Submitted 3/22/2022

General Location of Wipes Meson Assembly Building Batch #6

Who Took Wipes Jose De L a O Ext. x2557

Number of Wipes 50 Date Wipes Taken 3/22/2022

Count Comments or Requests To be counted for Alpha Beta

Results To: (Print Full Name)

Jose De La O delao@fnal.gov

- Place all wipes in numerical order in a ziplock bag.
- Attach Count Request Form to outside of bag.
- DO NOT use staples.
- Include no more than 80 wipes per Count Request.

RAF USE ONLY			
Received By <u>z/eh 3</u>	Quantity <u>50</u>	Date/Time <u>3/22/22 13:10</u>	Group-Number _____

A-32

Accelerator Div. Wipe Report

Monday, March 28, 2022

Location:	Taken By:	Date:	Counted By:	CC:
Batch ID: Wipes - AD - 20220328174830	Count Time : 1.0 min.	Count Mode : Simultaneous	Operating Volts : 1425	
Count Date: 3/28/2022	Daily Bkgd Count Time: 10 min.	Geometry : Swipe/Smear	Plateau Set : 44	
FNAL Alpha Eff : 11.43	Alpha Bkgd Rate : 0.20 ± 0.14 CPM	Alpha Count Ld = 4.27 CPM	Device : S5-XLB	
FNAL Beta Eff : 15.43	Beta Bkgd Rate : 1.40 ± 0.37 CPM	Beta-Gamma Count Ld = 6.82 CPM	Beta-Gamma Ld = 44.19 DPM	

Wipe #	Carrier #	Alpha Gross CPM	Beta-Gamma Gross CPM	Alpha Net CPM	Beta-Gamma Net CPM	Alpha Net DPM	Beta-Gamma Net DPM	Alpha Net nCi	Beta-Gamma Net nCi	Flags
1	32	1.0	2.0	0.8	0.6	7.0	3.9	0.00	0.00	
2	44	0.0	4.0	0.0	2.6	0.0	16.9	0.00	0.01	
3	113	0.0	1.0	0.0	0.0	0.0	0.0	0.00	0.00	
4	110	0.0	1.0	0.0	0.0	0.0	0.0	0.00	0.00	
5	22	0.0	0.0	0.0	0.0	0.0	0.0	0.00	0.00	
6	60	0.0	2.0	0.0	0.6	0.0	3.9	0.00	0.00	
7	132	0.0	0.0	0.0	0.0	0.0	0.0	0.00	0.00	
8	11	0.0	4.0	0.0	2.6	0.0	16.9	0.00	0.01	
9	39	0.0	2.0	0.0	0.6	0.0	3.9	0.00	0.00	
10	37	0.0	1.0	0.0	0.0	0.0	0.0	0.00	0.00	
11	15	0.0	0.0	0.0	0.0	0.0	0.0	0.00	0.00	
12	45	0.0	1.0	0.0	0.0	0.0	0.0	0.00	0.00	
13	79	0.0	6.0	0.0	4.6	0.0	29.8	0.00	0.01	
14	117	0.0	3.0	0.0	1.6	0.0	10.4	0.00	0.00	
15	51	0.0	3.0	0.0	1.6	0.0	10.4	0.00	0.00	
16	9	1.0	5.0	0.8	3.6	7.0	23.3	0.00	0.01	
17	74	1.0	2.0	0.8	0.6	7.0	3.9	0.00	0.00	
18	4	0.0	2.0	0.0	0.6	0.0	3.9	0.00	0.00	
19	10	0.0	4.0	0.0	2.6	0.0	16.9	0.00	0.01	
20	87	0.0	6.0	0.0	4.6	0.0	29.8	0.00	0.01	
21	57	0.0	3.0	0.0	1.6	0.0	10.4	0.00	0.00	
22	5	1.0	1.0	0.8	0.0	7.0	0.0	0.00	0.00	
23	104	0.0	5.0	0.0	3.6	0.0	23.3	0.00	0.01	
24	18	0.0	1.0	0.0	0.0	0.0	0.0	0.00	0.00	
25	25	0.0	2.0	0.0	0.6	0.0	3.9	0.00	0.00	
26	49	0.0	0.0	0.0	0.0	0.0	0.0	0.00	0.00	
27	36	0.0	1.0	0.0	0.0	0.0	0.0	0.00	0.00	
28	52	0.0	0.0	0.0	0.0	0.0	0.0	0.00	0.00	
29	55	0.0	0.0	0.0	0.0	0.0	0.0	0.00	0.00	
30	122	0.0	0.0	0.0	0.0	0.0	0.0	0.00	0.00	
31	33	0.0	5.0	0.0	3.6	0.0	23.3	0.00	0.01	
32	112	0.0	5.0	0.0	3.6	0.0	23.3	0.00	0.01	
33	7	0.0	3.0	0.0	1.6	0.0	10.4	0.00	0.00	

Accelerator Div. Wipe Report

Monday, March 28, 2022

<u>Wipe #</u>	<u>Carrier #</u>	<u>Alpha Gross CPM</u>	<u>Beta-Gamma Gross CPM</u>	<u>Alpha Net CPM</u>	<u>Beta-Gamma Net CPM</u>	<u>Alpha Net DPM</u>	<u>Beta-Gamma Net DPM</u>	<u>Alpha Net nCi</u>	<u>Beta-Gamma Net nCi</u>	<u>Flags</u>
34	43	0.0	2.0	0.0	0.6	0.0	3.9	0.00	0.00	
35	62	0.0	3.0	0.0	1.6	0.0	10.4	0.00	0.00	
36	46	0.0	1.0	0.0	0.0	0.0	0.0	0.00	0.00	
37	38	0.0	3.0	0.0	1.6	0.0	10.4	0.00	0.00	
38	88	0.0	5.0	0.0	3.6	0.0	23.3	0.00	0.01	
39	115	0.0	6.0	0.0	4.6	0.0	29.8	0.00	0.01	
40	72	0.0	2.0	0.0	0.6	0.0	3.9	0.00	0.00	
41	19	0.0	1.0	0.0	0.0	0.0	0.0	0.00	0.00	
42	103	0.0	0.0	0.0	0.0	0.0	0.0	0.00	0.00	
43	84	0.0	2.0	0.0	0.6	0.0	3.9	0.00	0.00	
44	76	0.0	4.0	0.0	2.6	0.0	16.9	0.00	0.01	
45	118	0.0	3.0	0.0	1.6	0.0	10.4	0.00	0.00	
46	41	0.0	3.0	0.0	1.6	0.0	10.4	0.00	0.00	
47	67	0.0	1.0	0.0	0.0	0.0	0.0	0.00	0.00	
48	68	0.0	3.0	0.0	1.6	0.0	10.4	0.00	0.00	
49	96	0.0	3.0	0.0	1.6	0.0	10.4	0.00	0.00	
50	29	0.0	1.0	0.0	0.0	0.0	0.0	0.00	0.00	