

Studies of precision measurements

Jeremy Fleishhacker & Chris Marshall
University of Rochester
11 July 2022



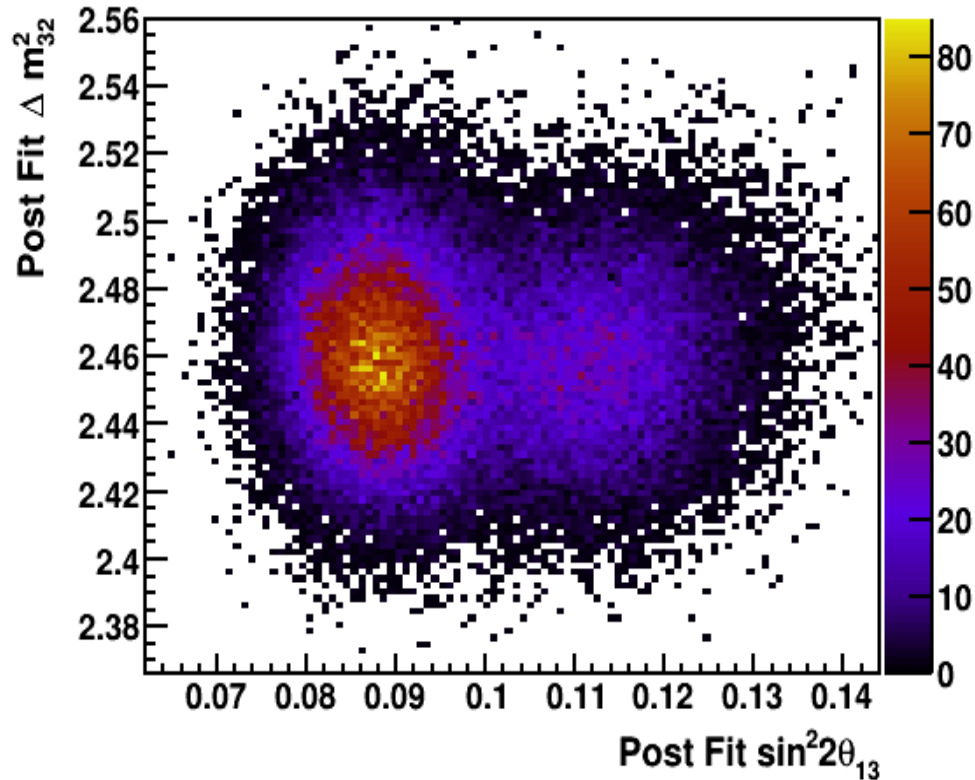
Method

- 65k throws at a single fixed true point
- Fixed true parameters:

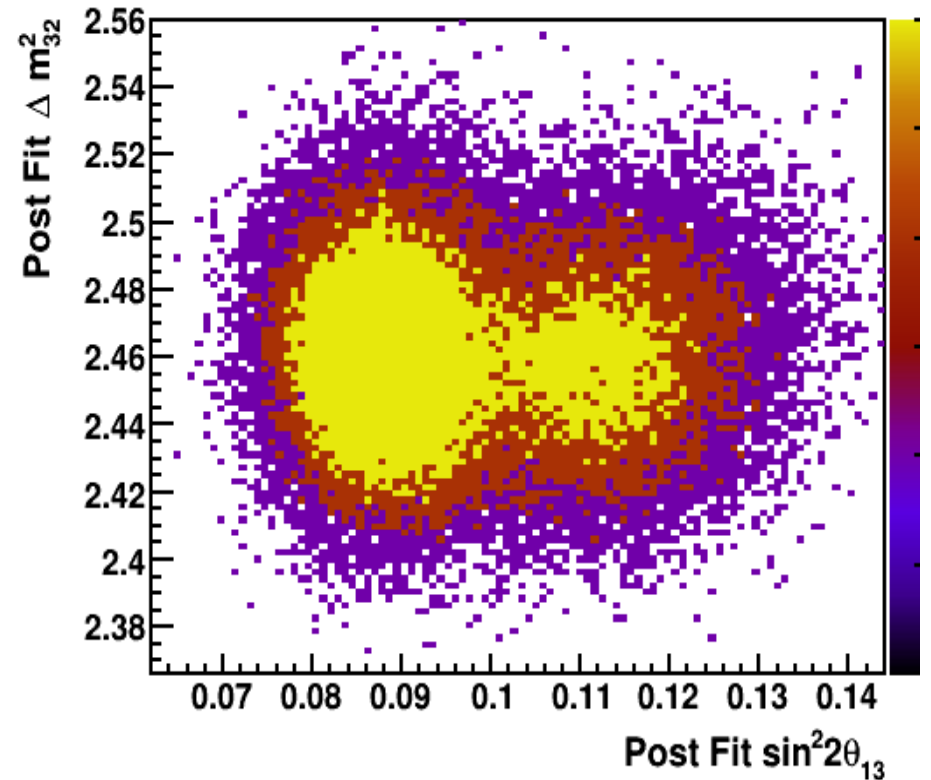
$\sin^2 2\theta_{13}$	0.088
Δm^2_{32}	$2.45 \times 10^{-3} \text{ eV}^2$
$\sin^2 \theta_{23}$	0.58
δ_{cp}	-0.25π

- Confidence levels found by ordering bins by content

Δm^2_{32} vs θ_{13}

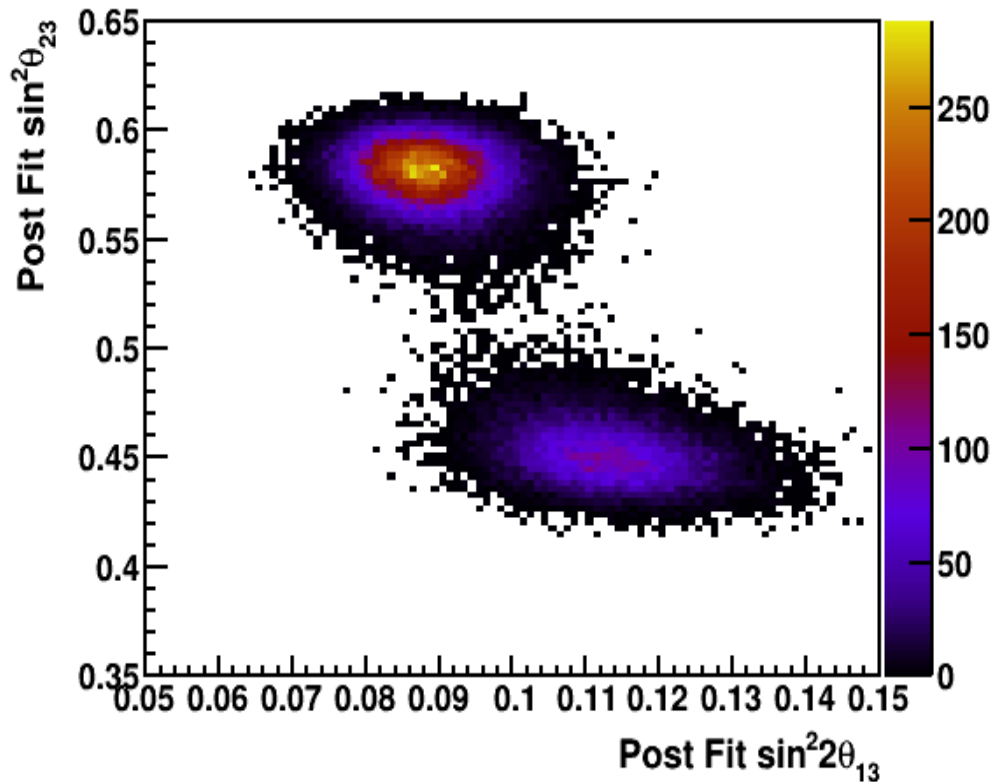


Color – # of throws in a bin

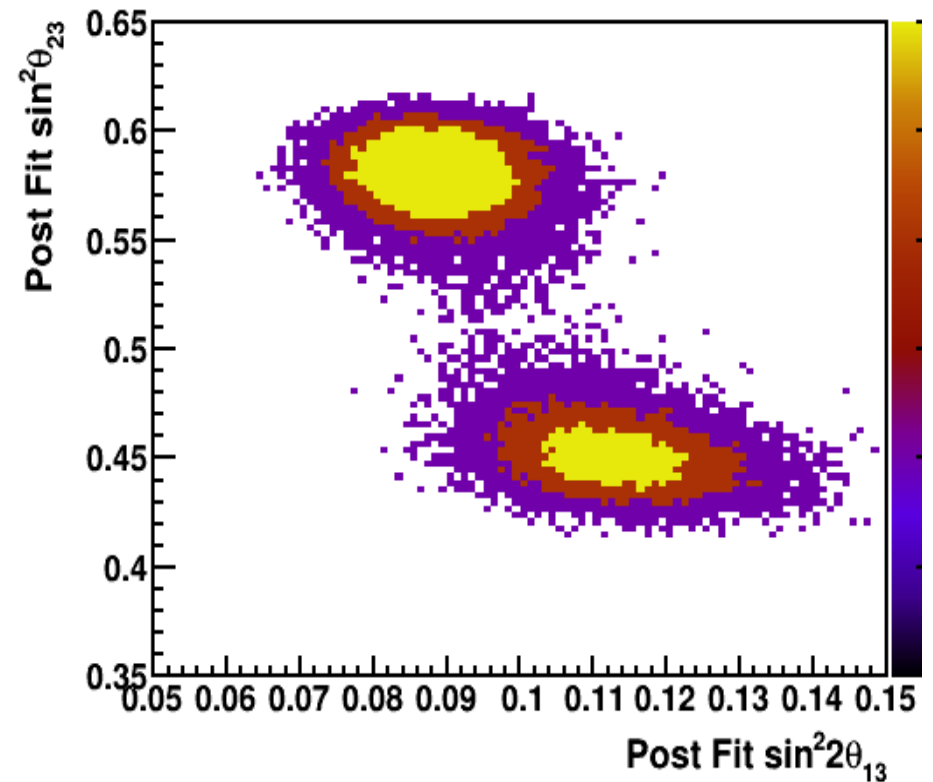


Yellow – 1σ , Red – 90%, Purple – 3σ

θ_{23} VS θ_{13}

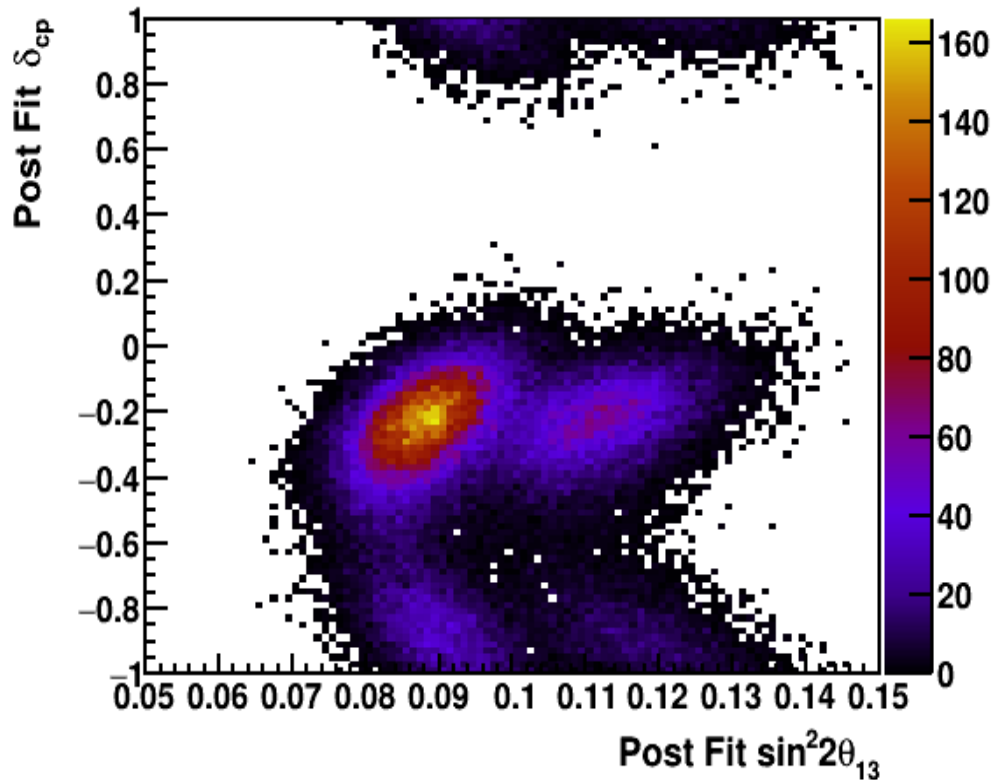


Color – # of throws in a bin

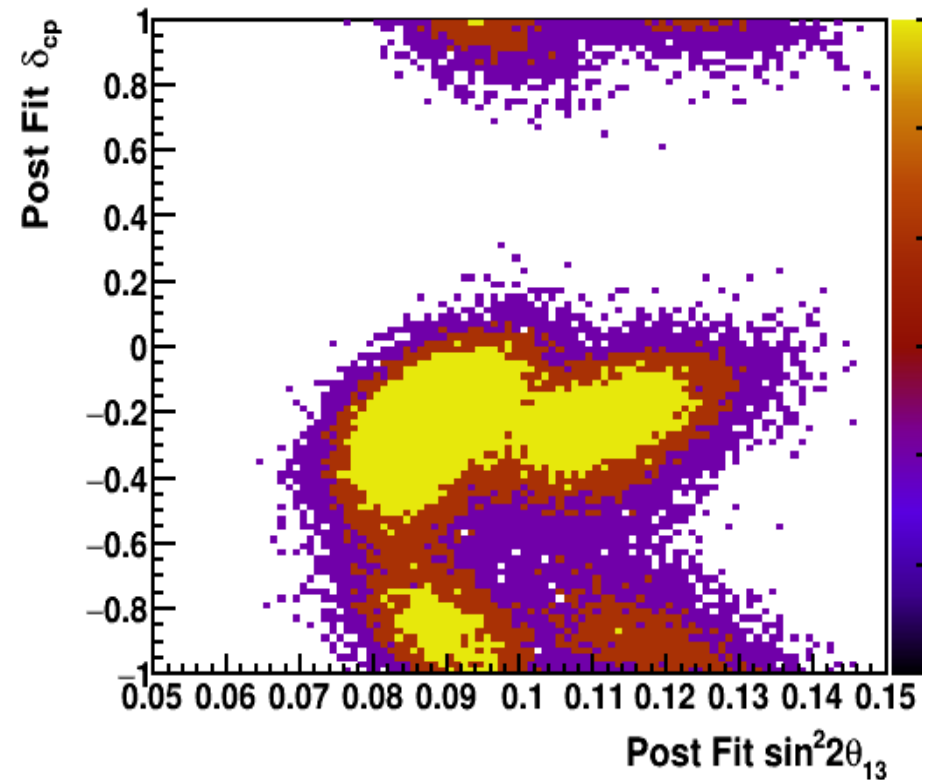


Yellow – 1σ , Red – 90%, Purple – 3σ

δ_{cp} VS θ_{13}

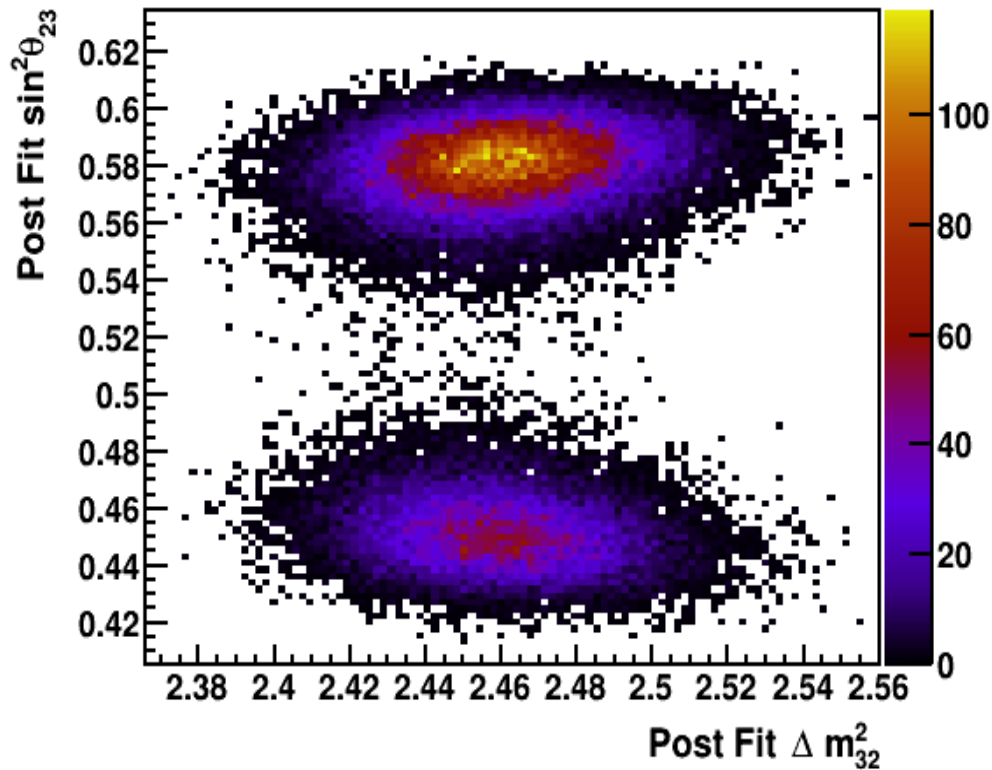


Color – # of throws in a bin

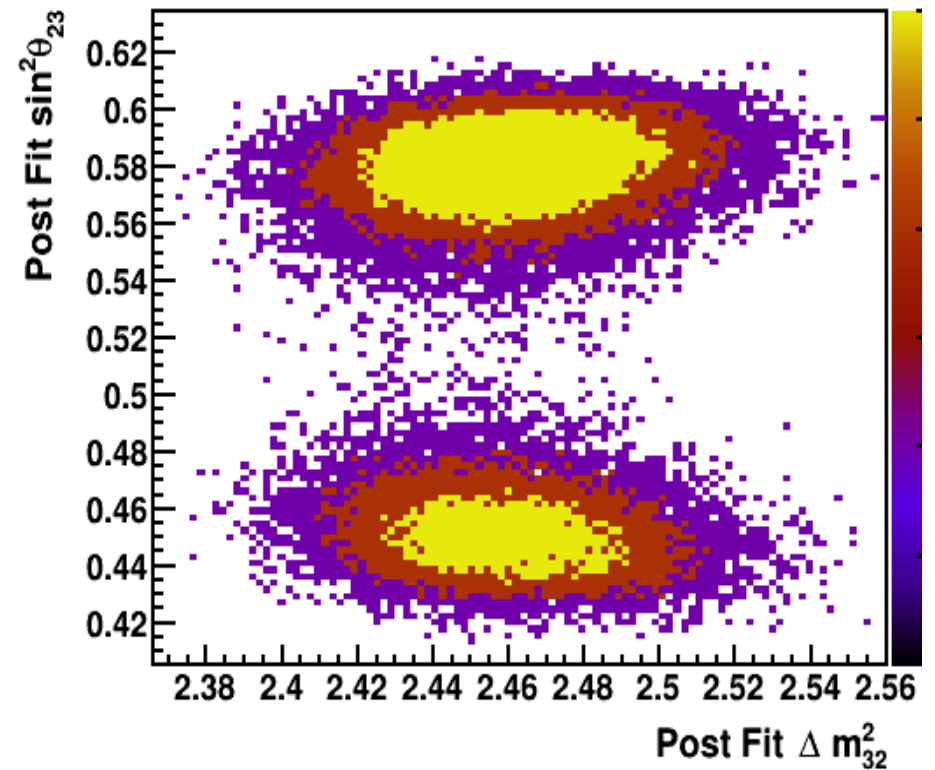


Yellow – 1σ , Red – 90%, Purple – 3σ

θ_{23} vs Δm^2_{32}

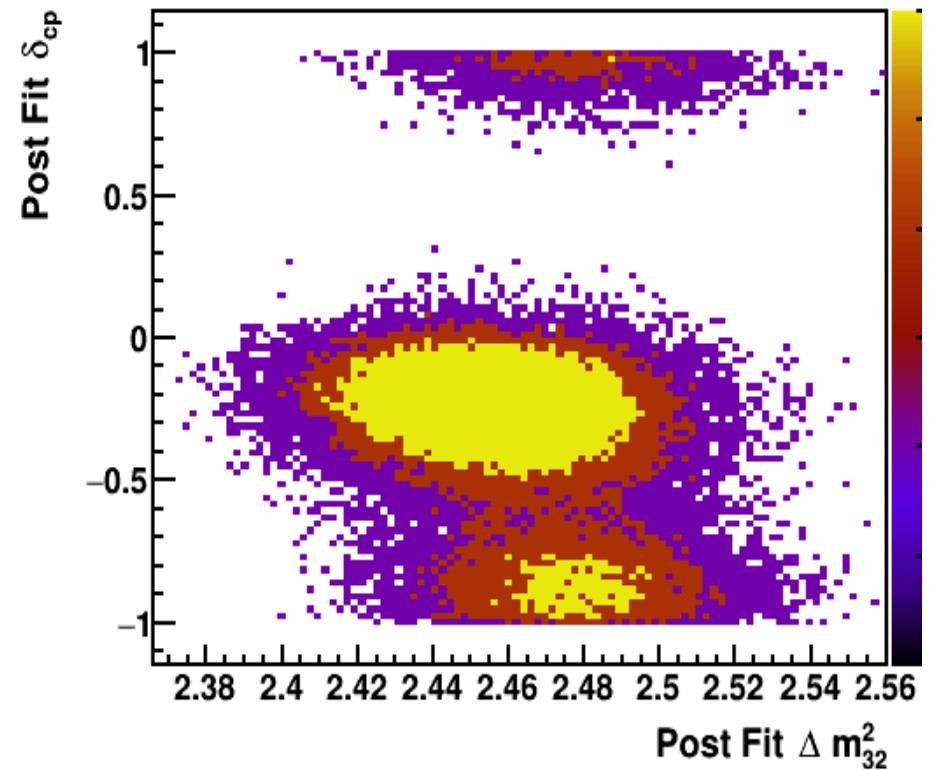
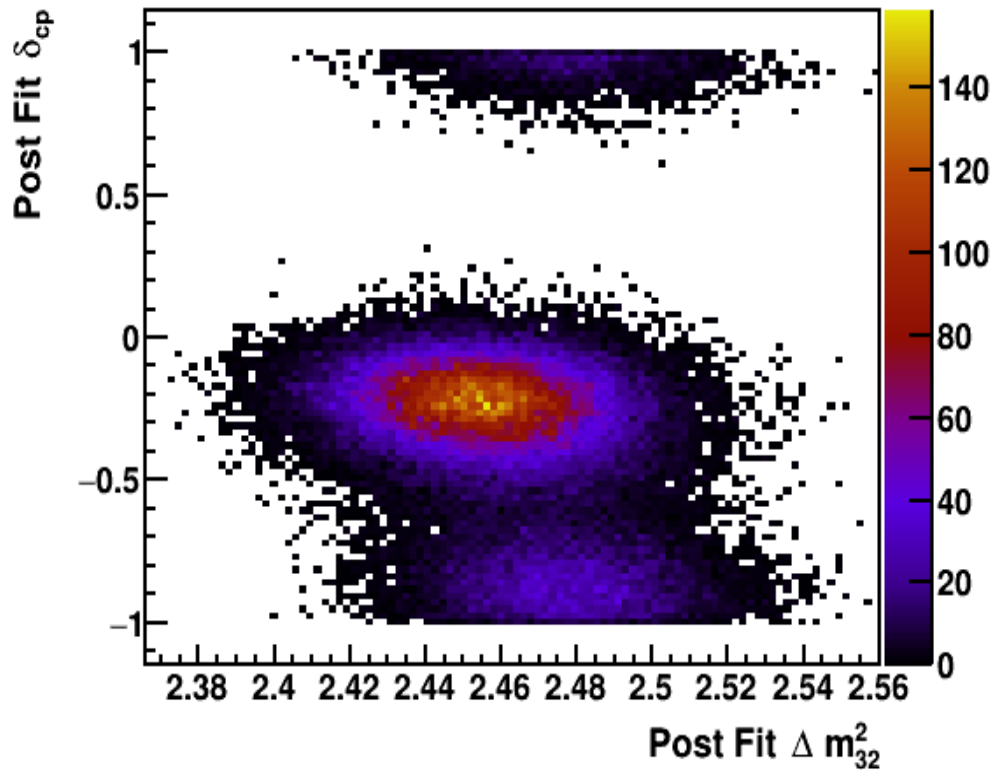


Color – # of throws in a bin

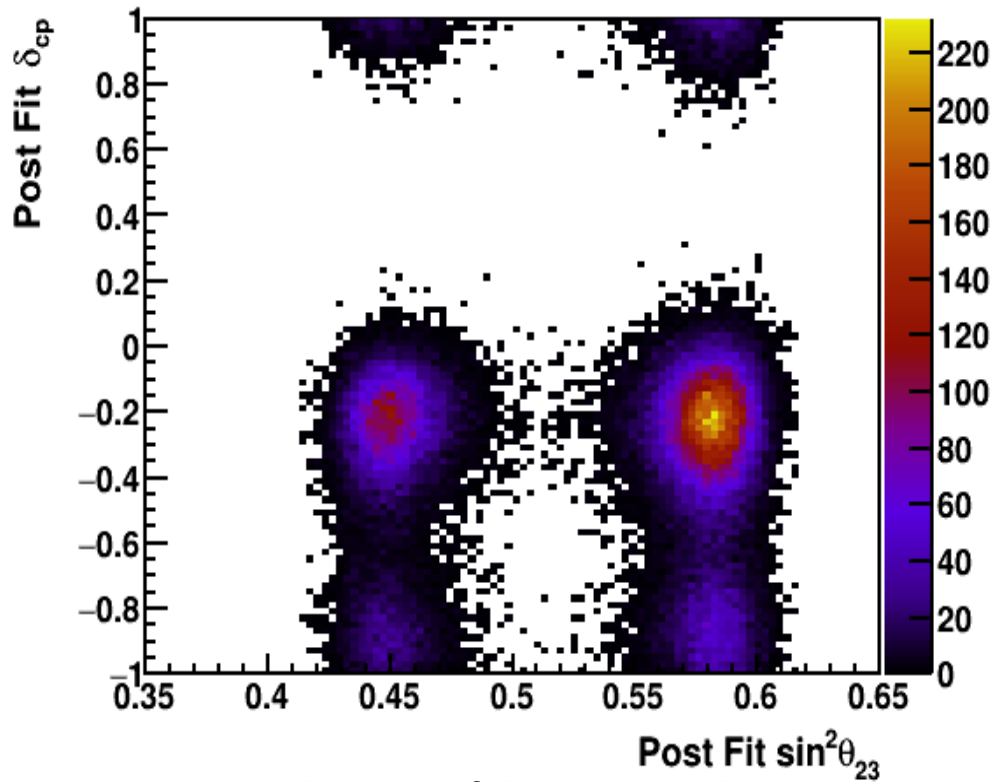


Yellow – 1σ , Red – 90%, Purple – 3σ

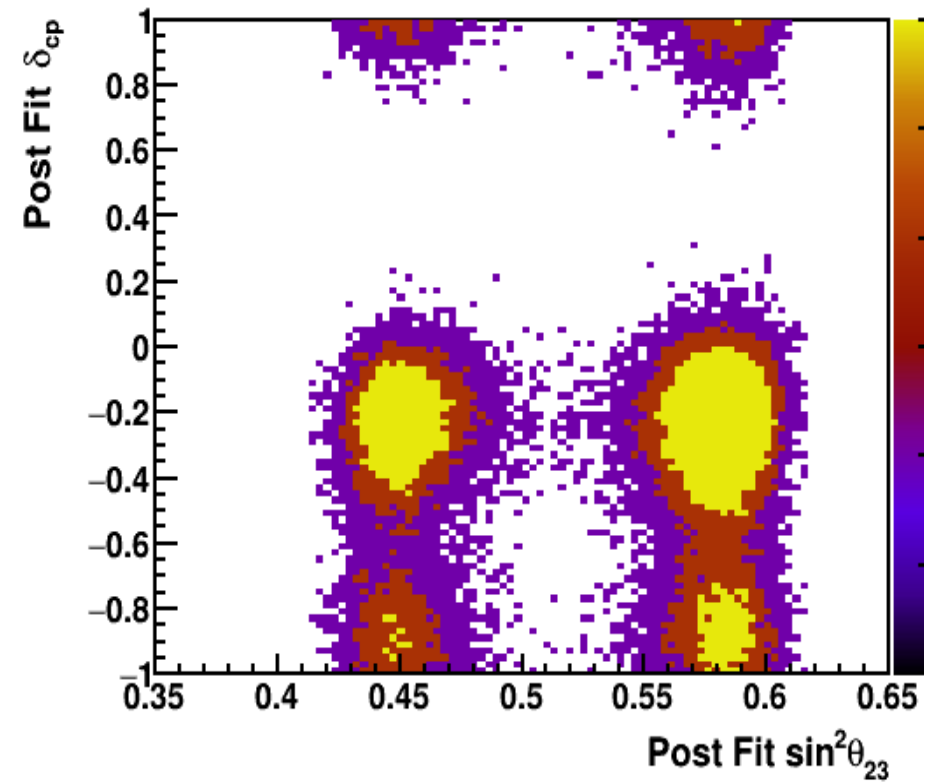
δ_{cp} vs Δm_{32}^2



δ_{cp} VS θ_{23}



Color – # of throws in a bin



Yellow – 1σ , Red – 90%, Purple – 3σ