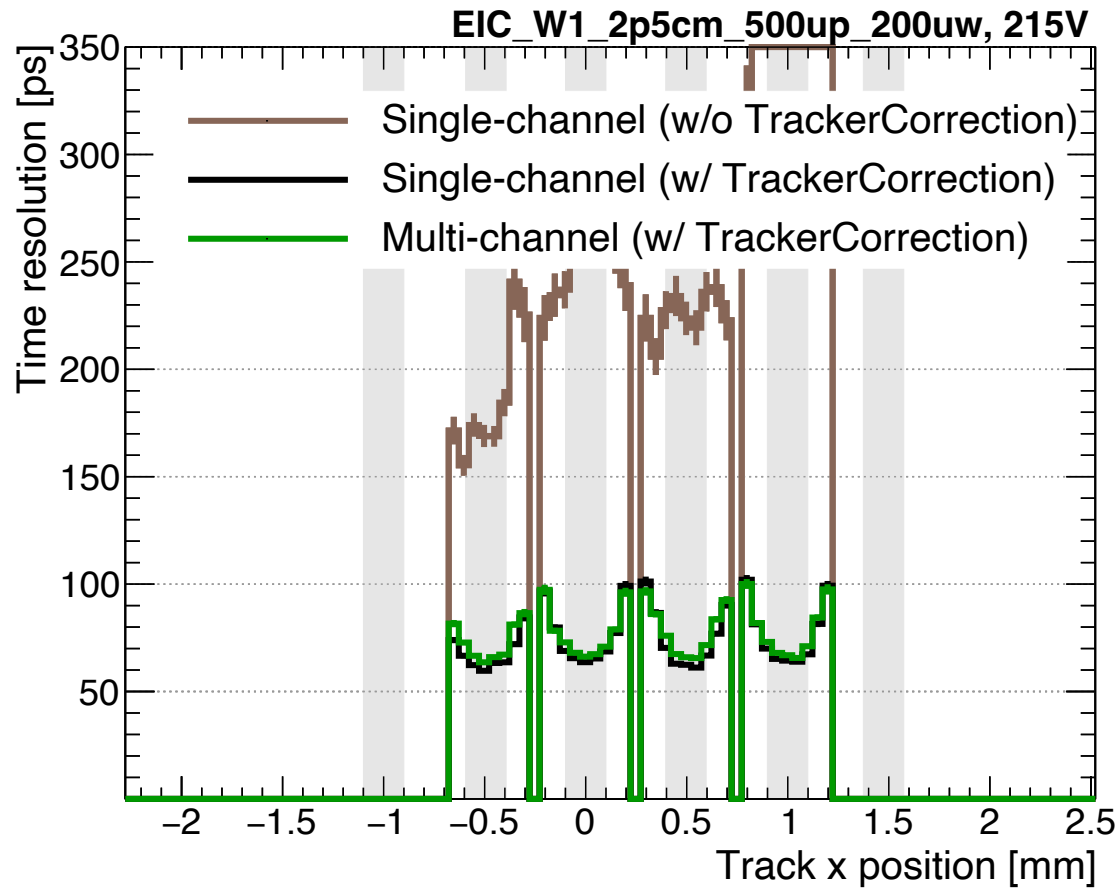
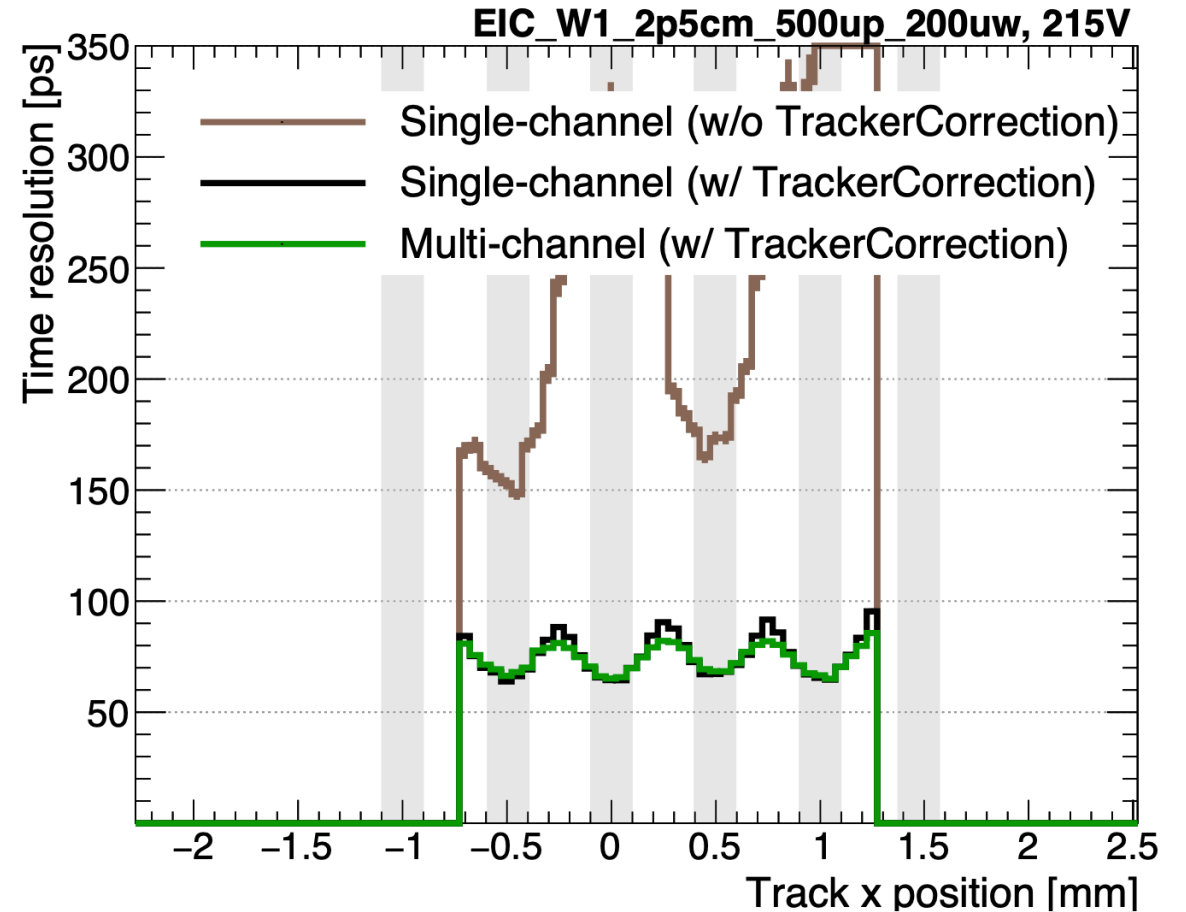


- Effect of Threshold values : EIC\_W1\_2p5cm\_215V

discrepancy due to different Threshold value



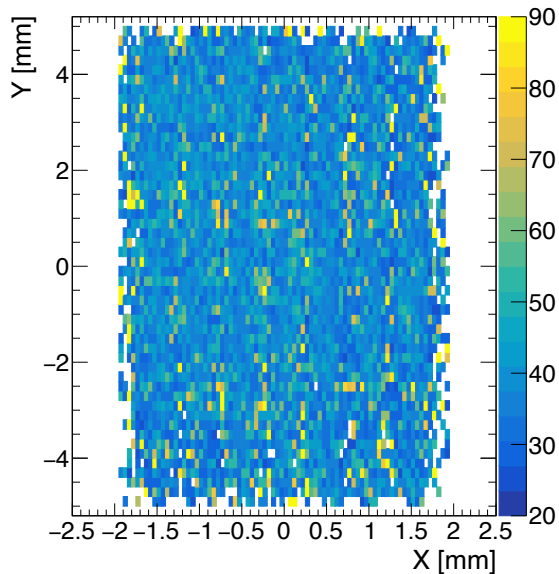
double noiseAmpThreshold = 15.0;  
double signalAmpThreshold = 25.0;



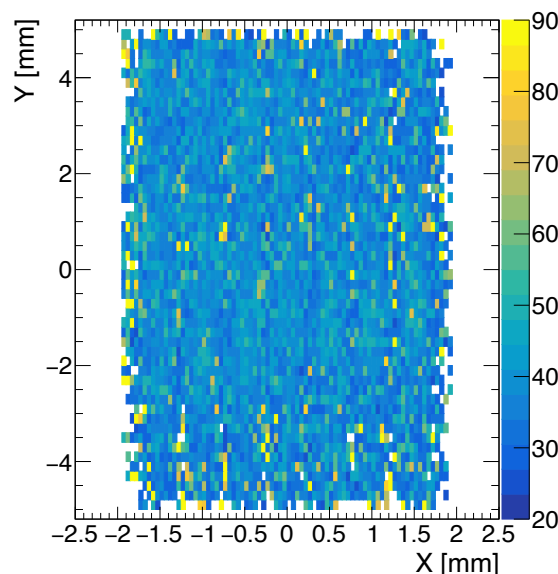
double noiseAmpThreshold = 7.0;  
double signalAmpThreshold = 12.0;

• EIC\_W1\_1cm\_500up\_200uw : Amplitude

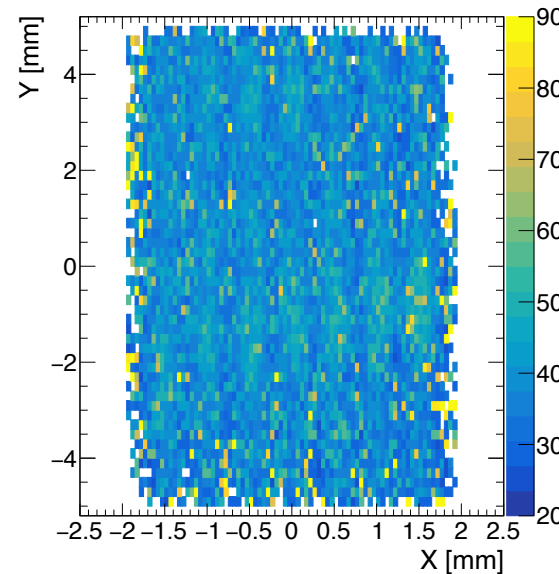
205V



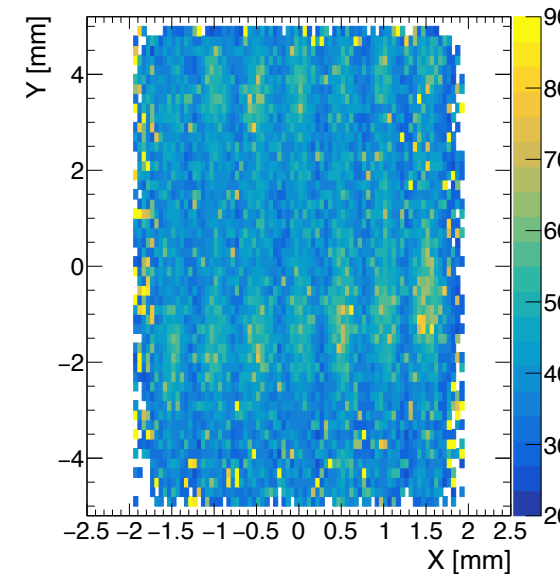
215V



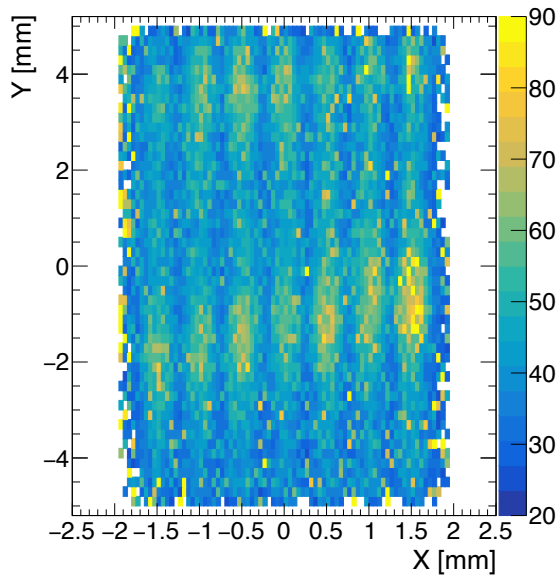
225V



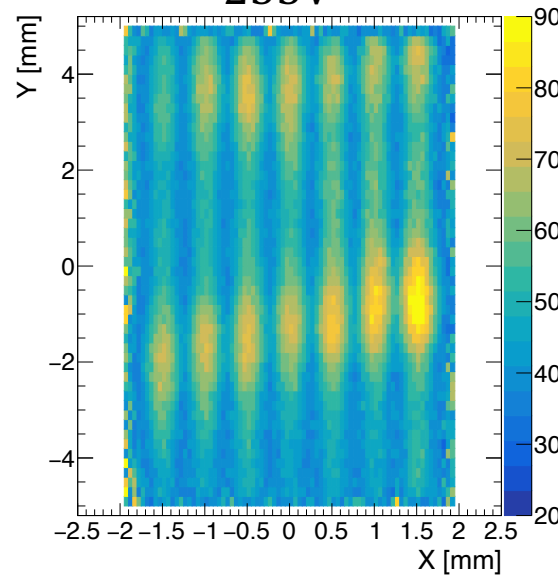
235V



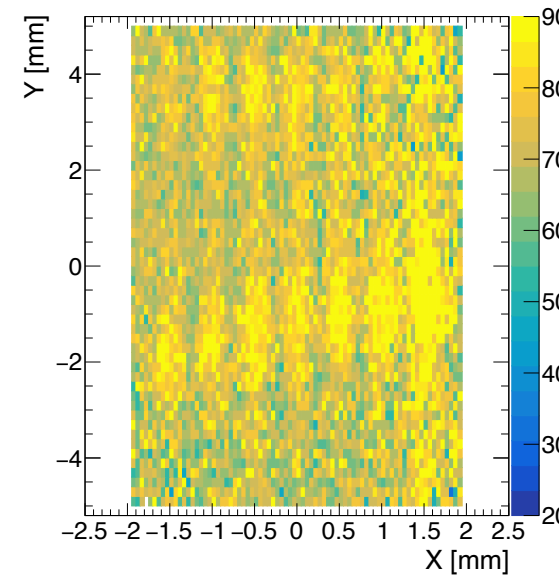
245V



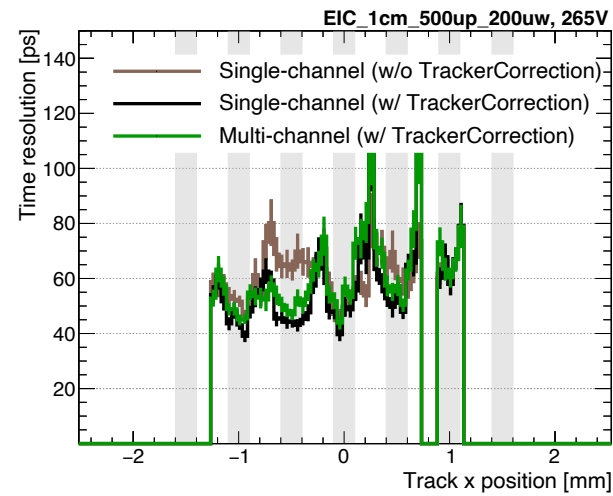
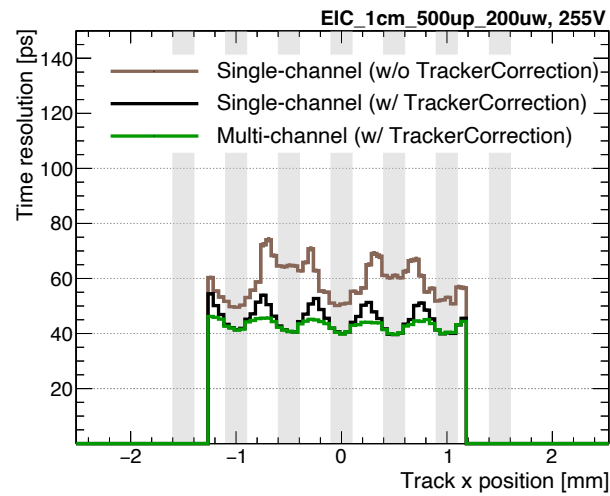
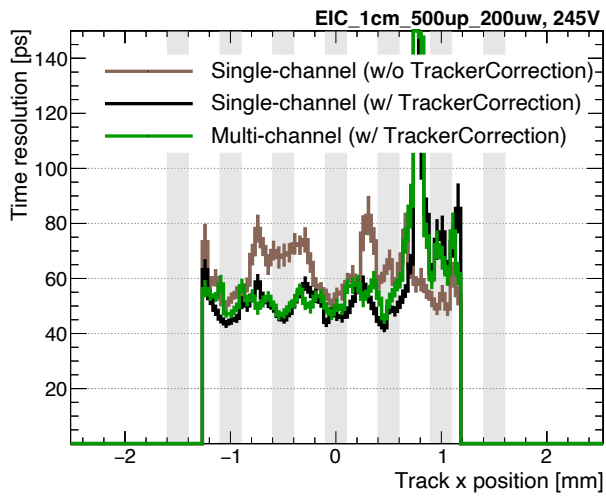
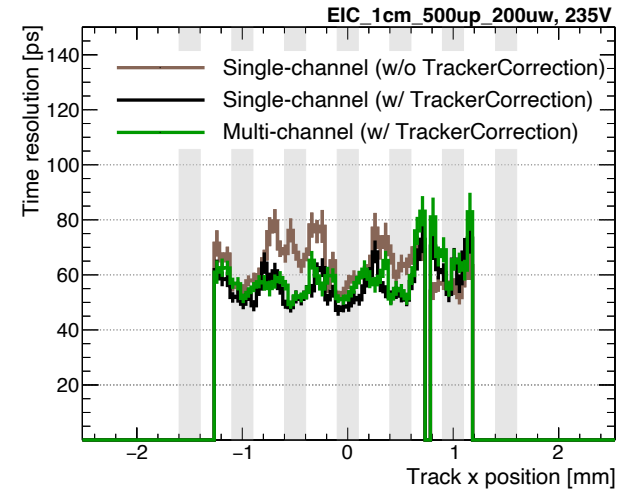
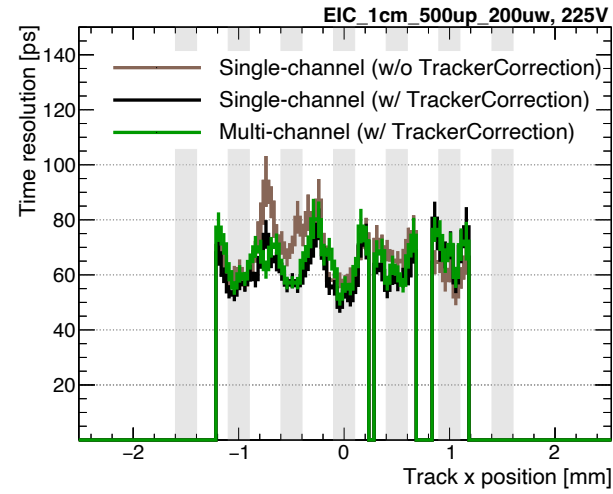
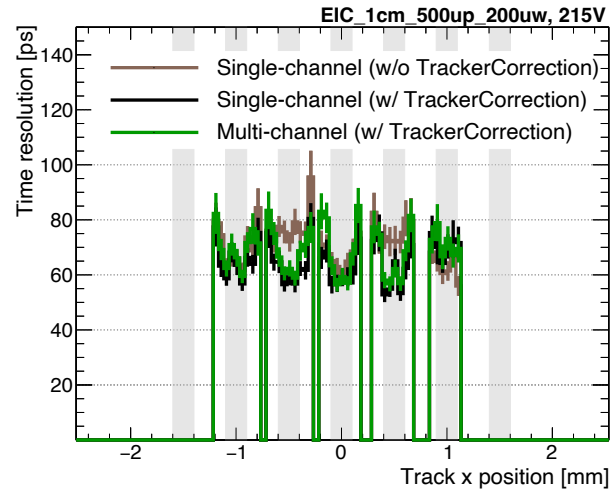
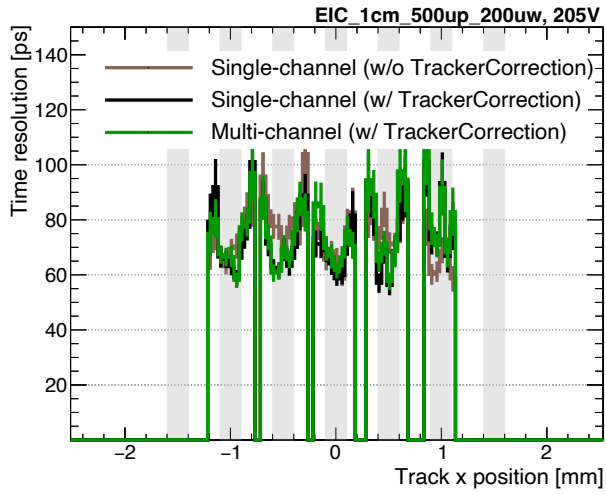
255V



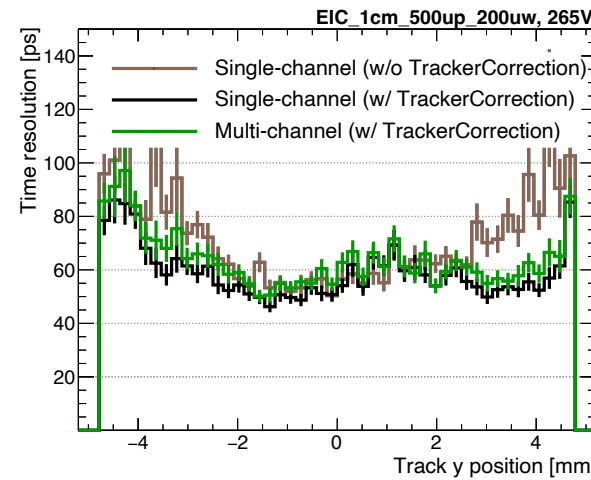
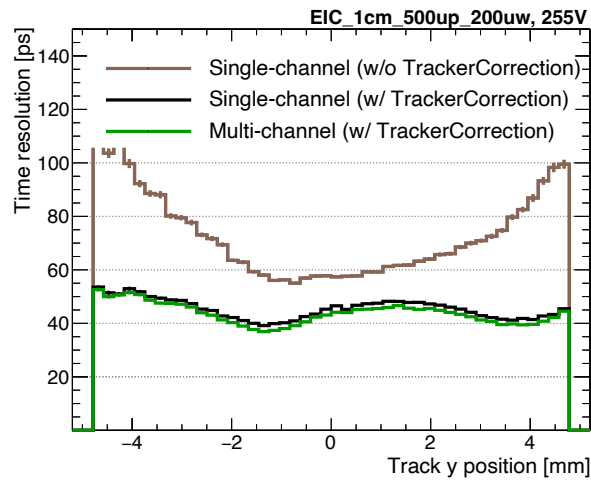
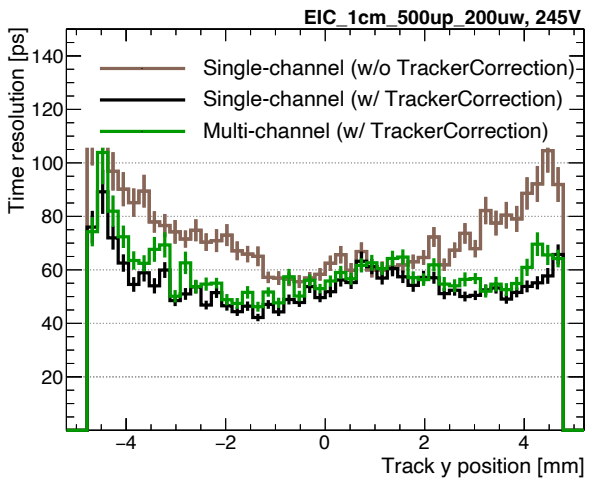
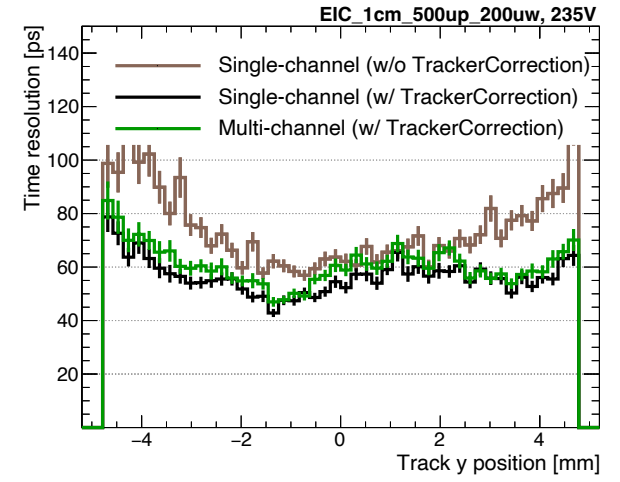
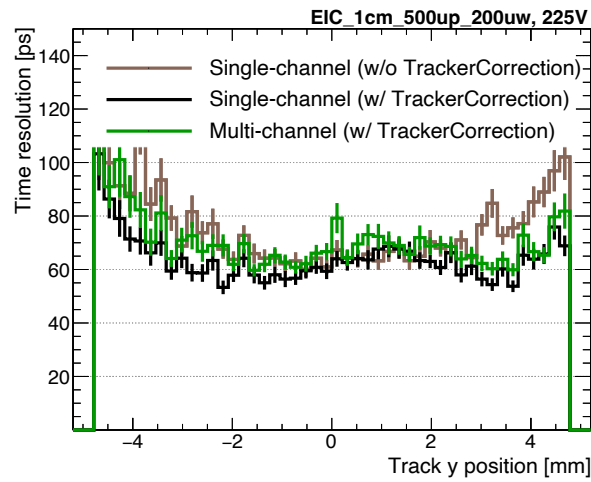
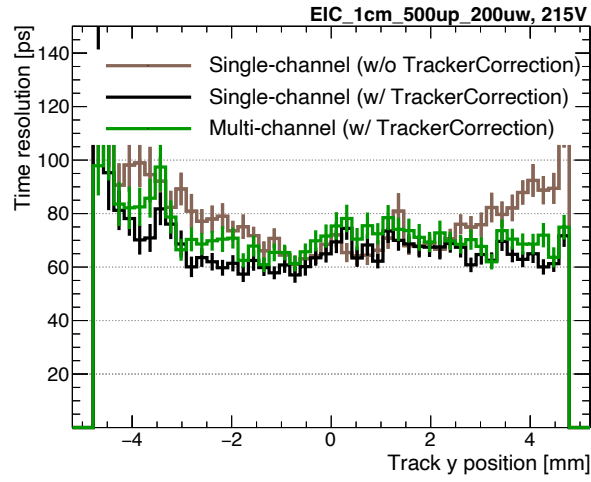
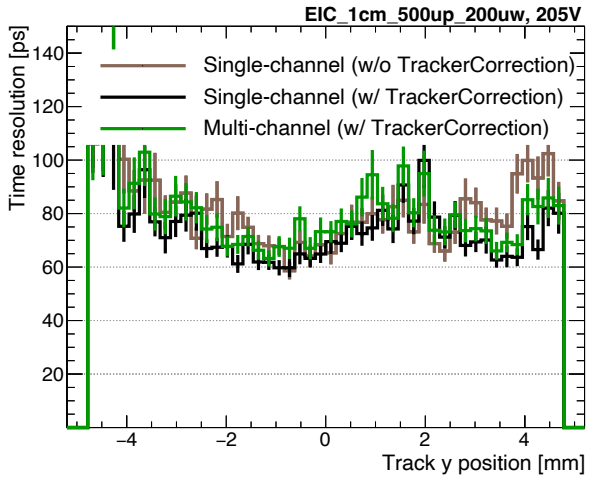
265V



• EIC\_W1\_1cm\_500up\_200uw : Time Resolution vs. X



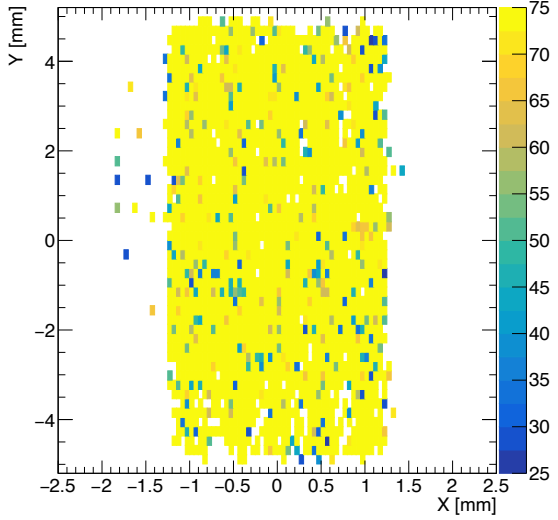
• EIC\_W1\_1cm\_500up\_200uw : Time Resolution vs. Y



• EIC\_W1\_1cm\_500up\_200uw : Single Channel (w/o Tracker Correction) Time Resolution vs. XY

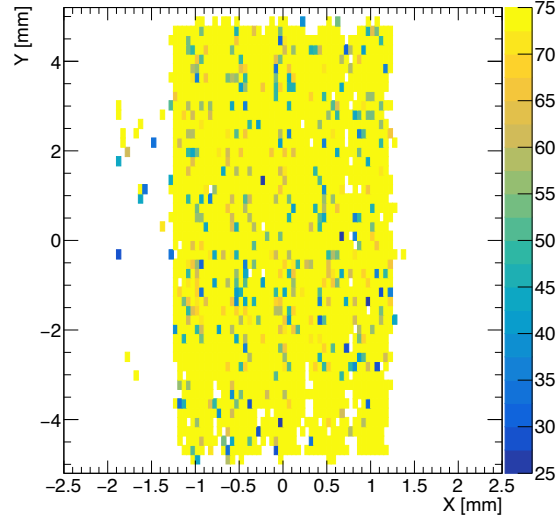
205V

time\_diff



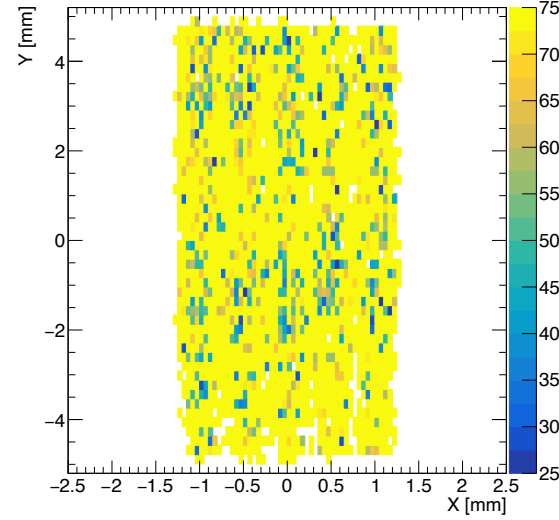
215V

time\_diff



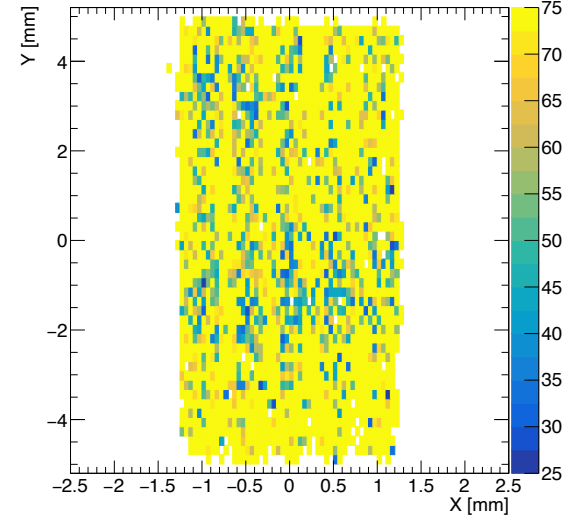
225V

time\_diff



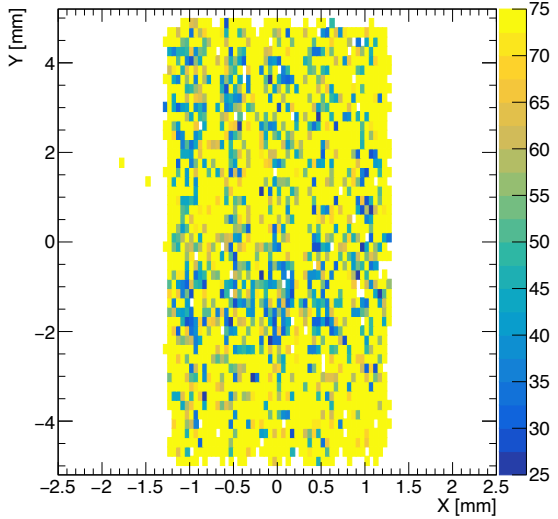
235V

time\_diff



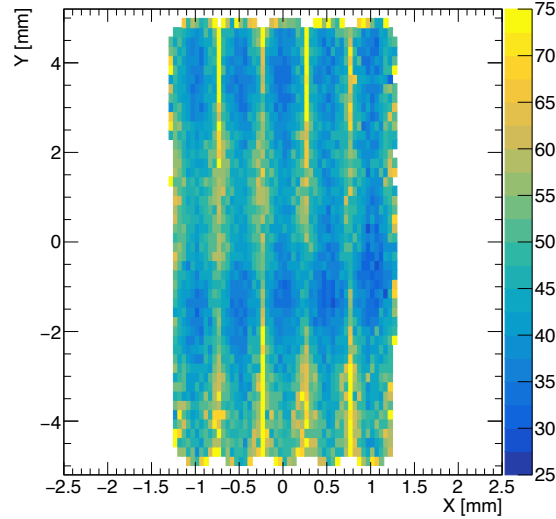
245V

time\_diff



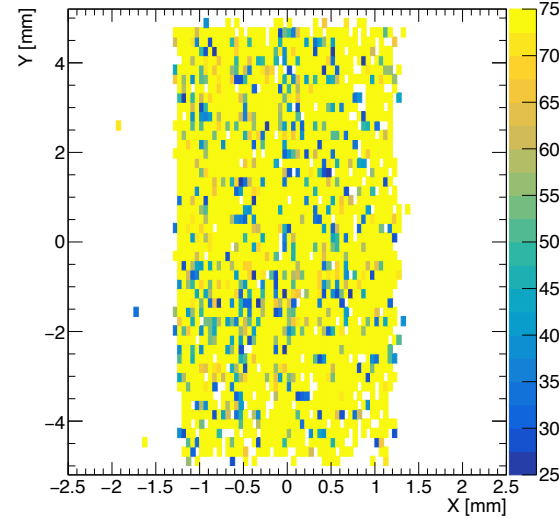
255V

time\_diff



265V

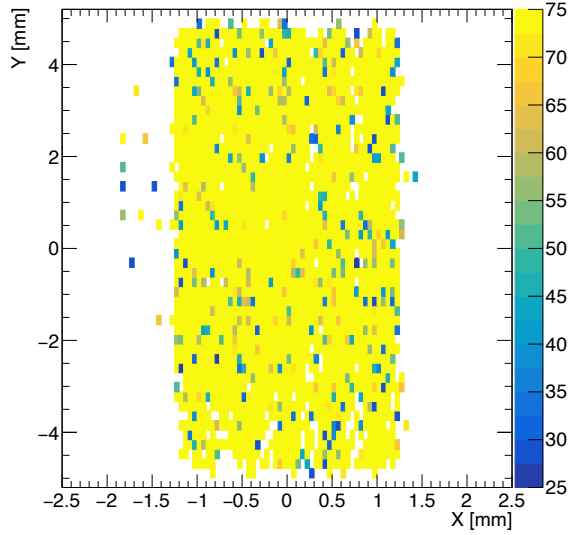
time\_diff



• EIC\_W1\_1cm\_500up\_200uw : Single Channel (w/ Tracker Correction) Time Resolution vs. XY

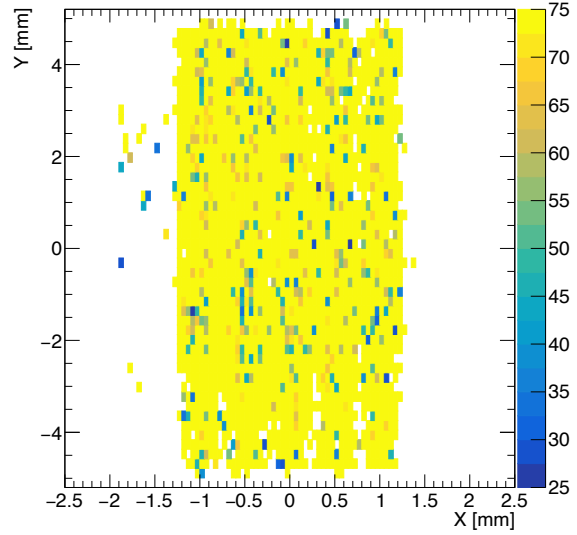
205V

timeDiffTracker



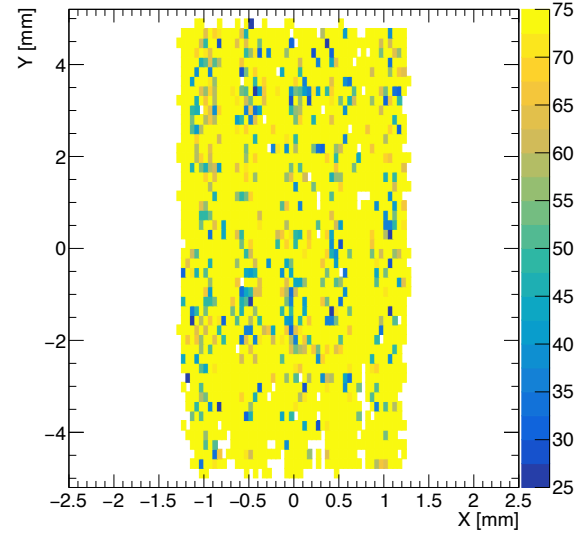
215V

timeDiffTracker



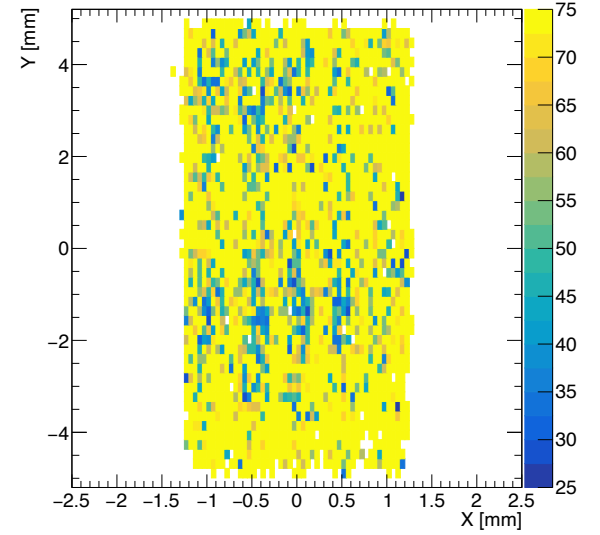
225V

timeDiffTracker



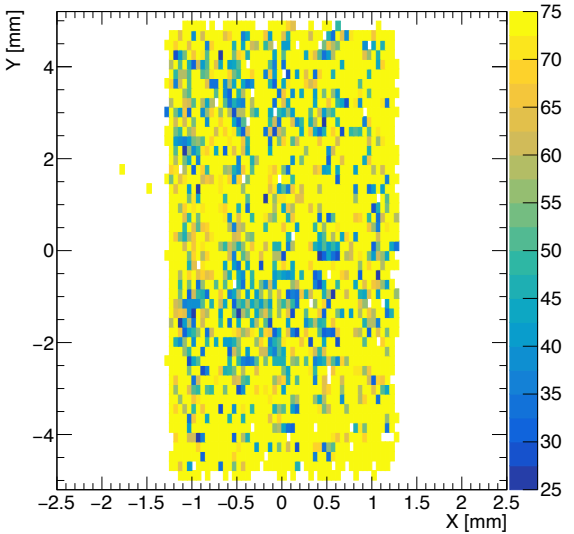
235V

timeDiffTracker



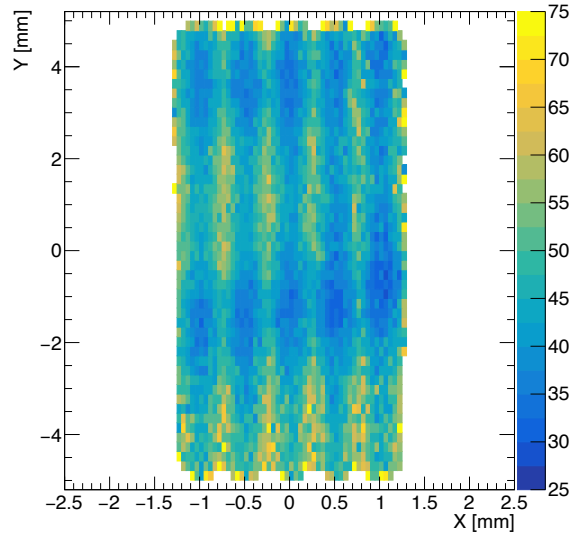
245V

timeDiffTracker



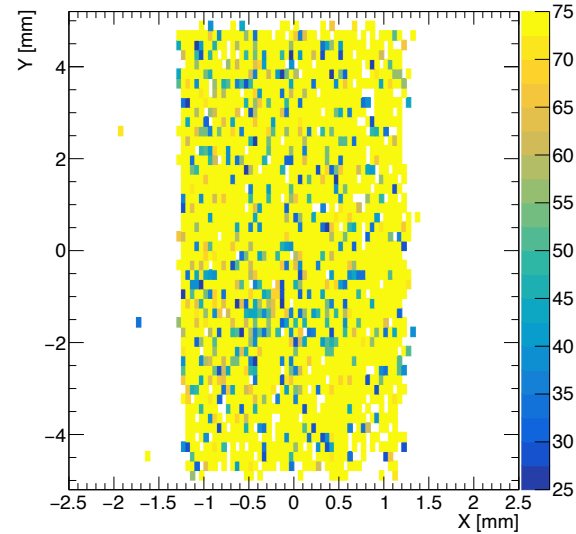
255V

timeDiffTracker



265V

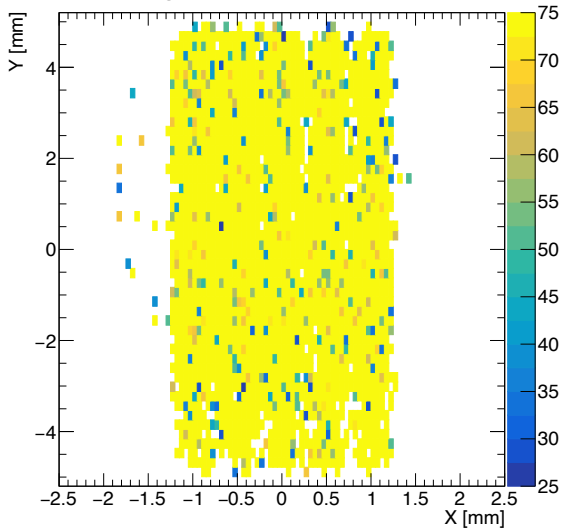
timeDiffTracker



• EIC\_W1\_1cm\_500up\_200uw : Multi Channel (w/ Tracker Correction) Time Resolution vs. XY

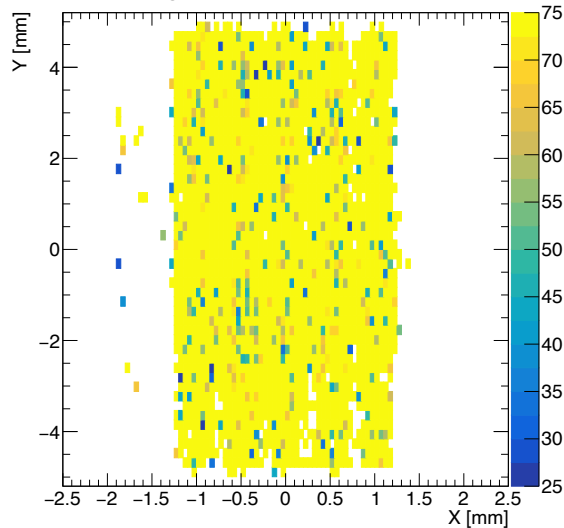
205V

weighted2\_timeDiff\_tracker



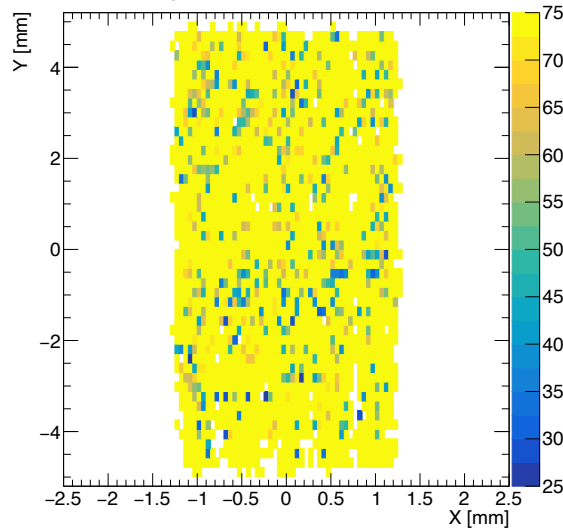
215V

weighted2\_timeDiff\_tracker



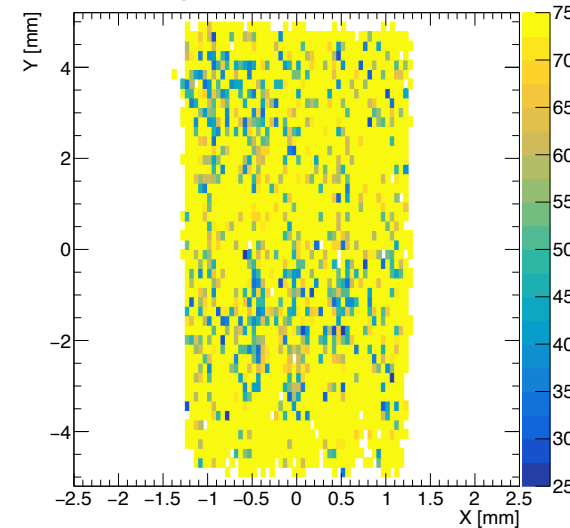
225V

weighted2\_timeDiff\_tracker



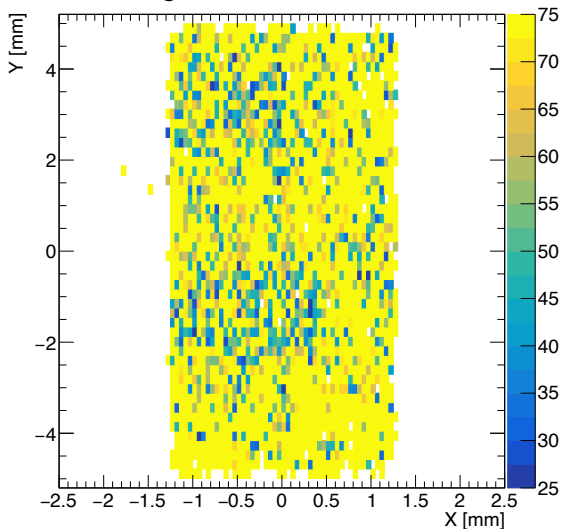
235V

weighted2\_timeDiff\_tracker



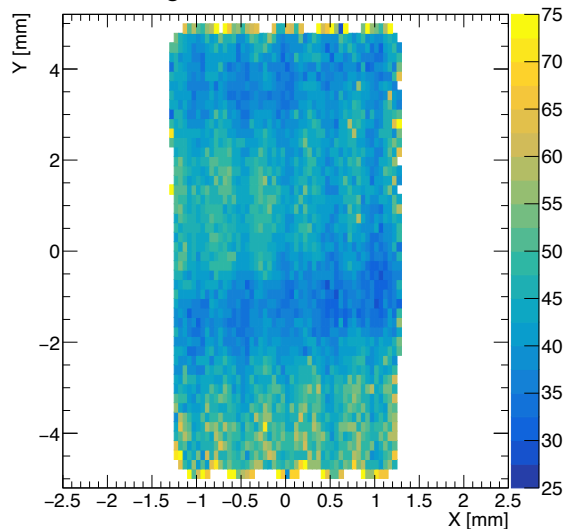
245V

weighted2\_timeDiff\_tracker



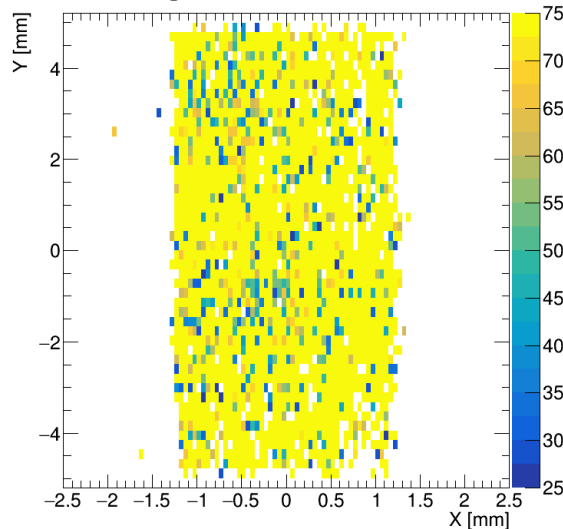
255V

weighted2\_timeDiff\_tracker

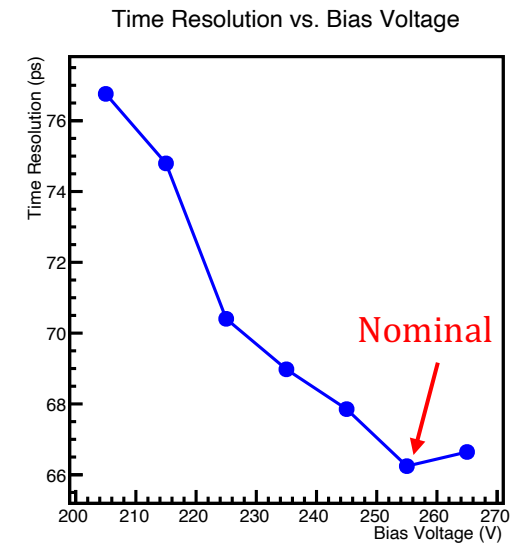
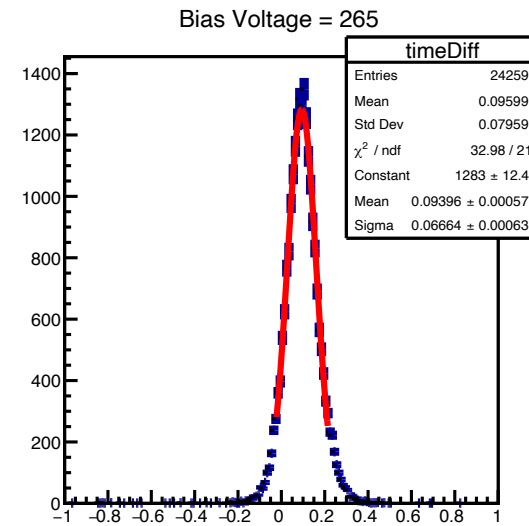
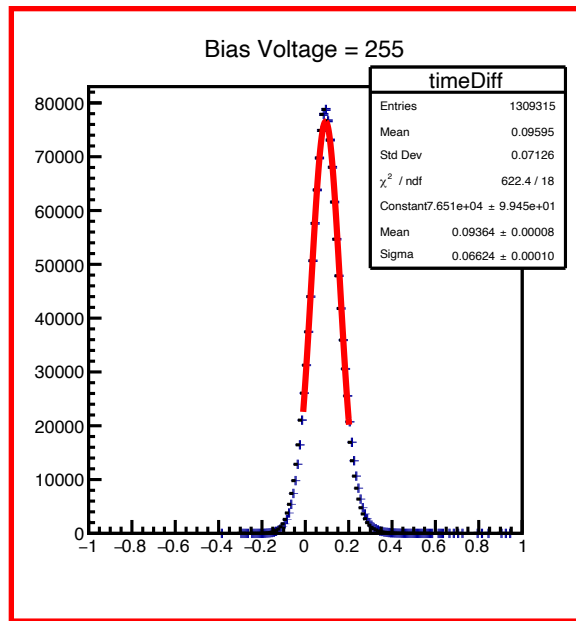
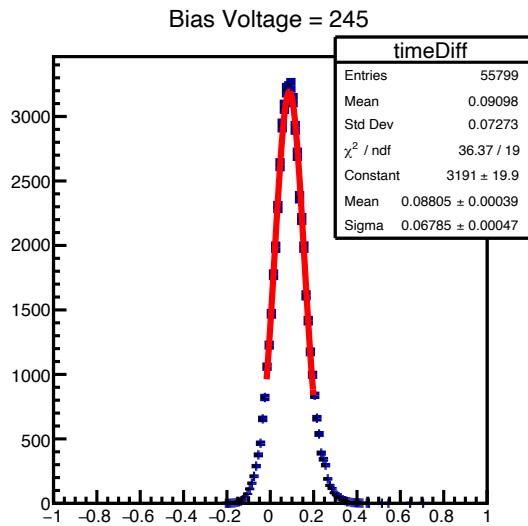
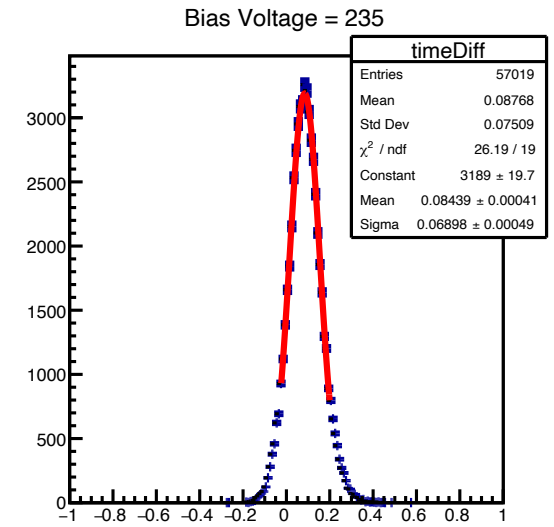
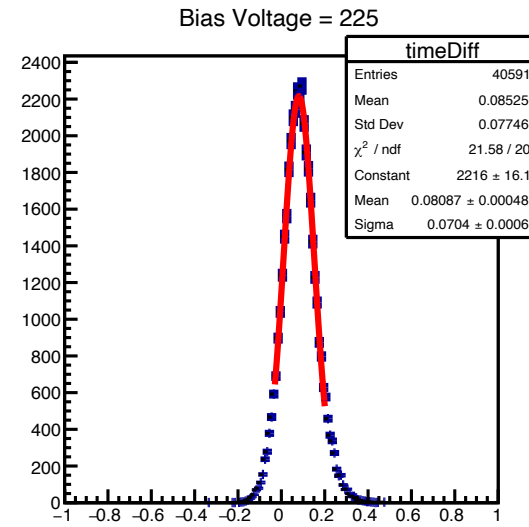
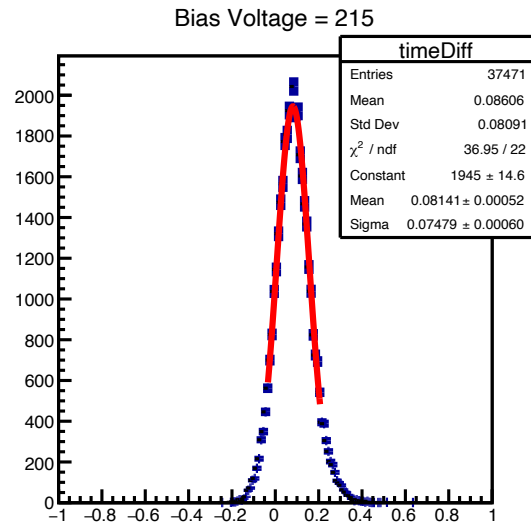
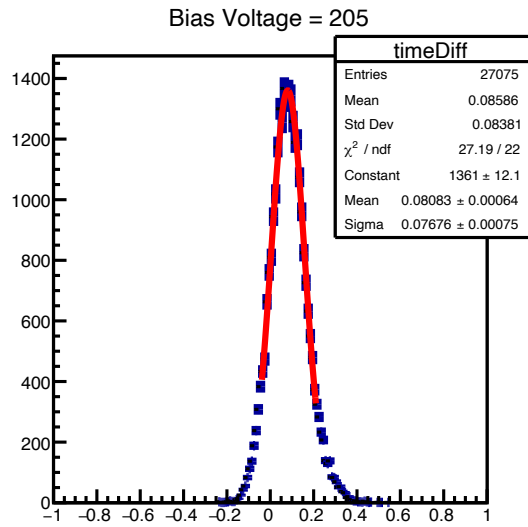


265V

weighted2\_timeDiff\_tracker

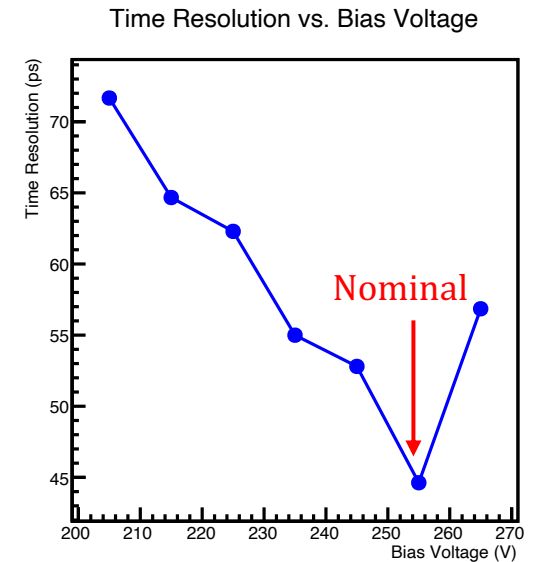
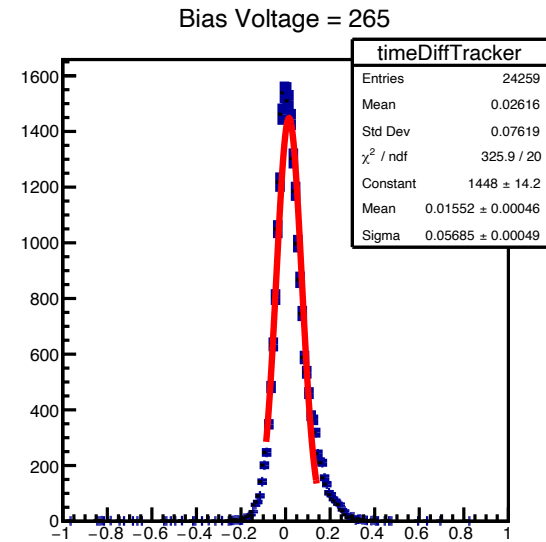
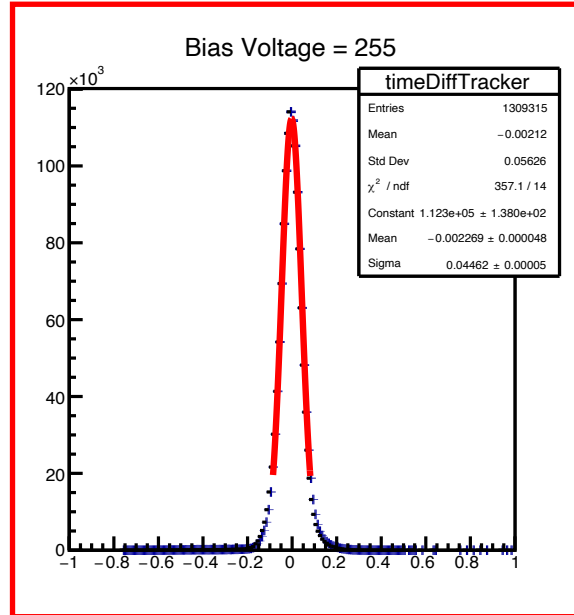
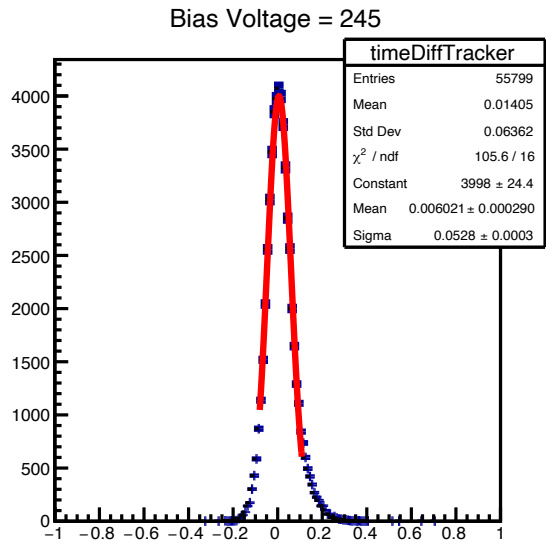
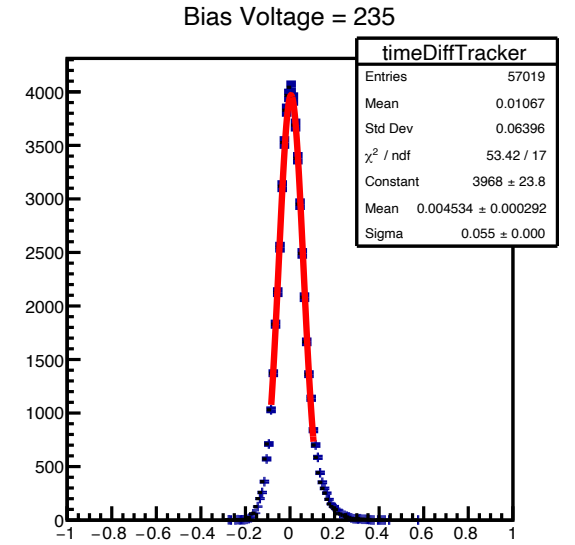
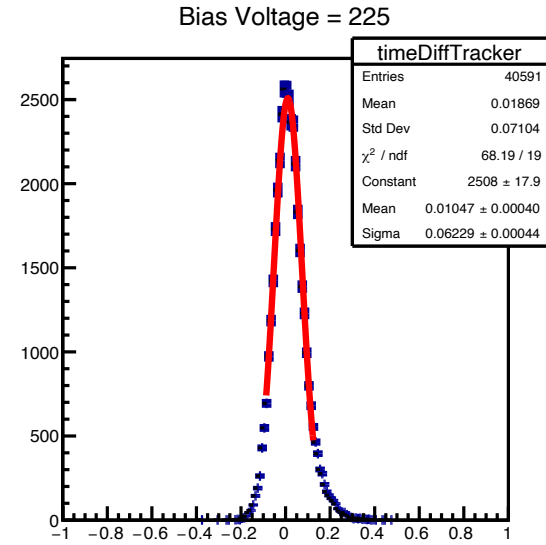
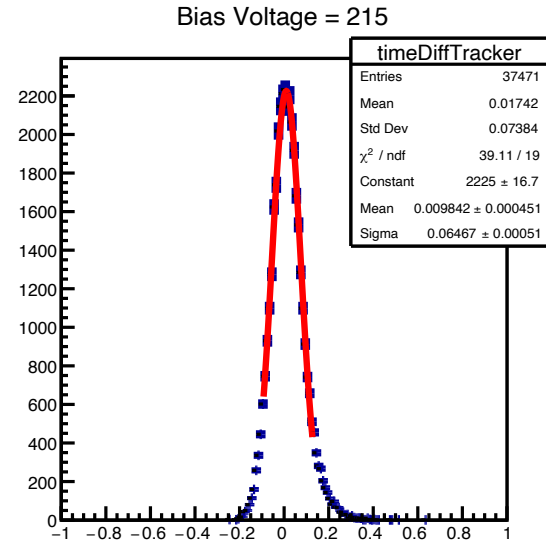
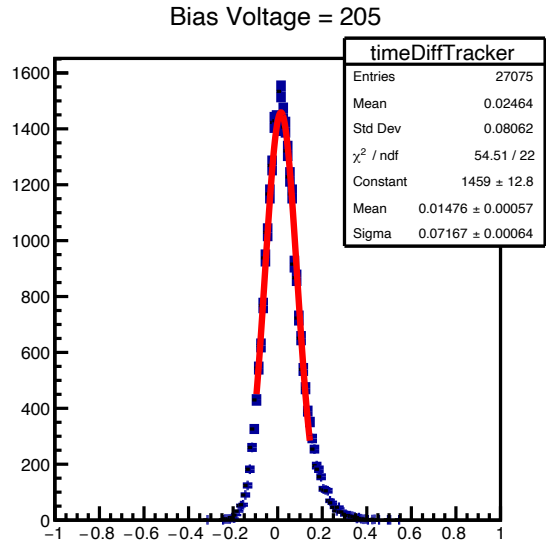


• EIC\_W1\_1cm\_500up\_200uw : Global Time Resolution (Single Channel w/o Tracker Correction ) vs. Bias Voltage

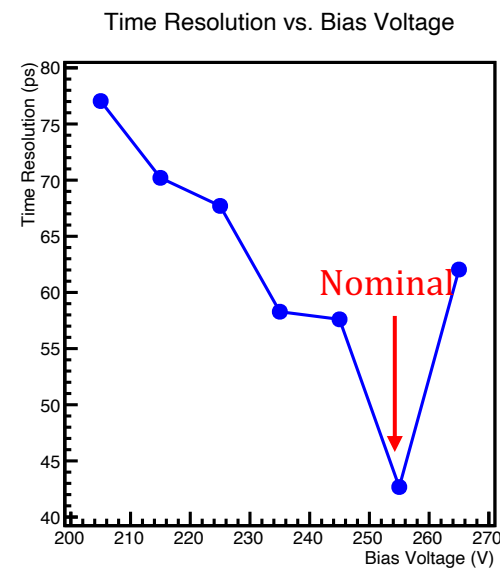
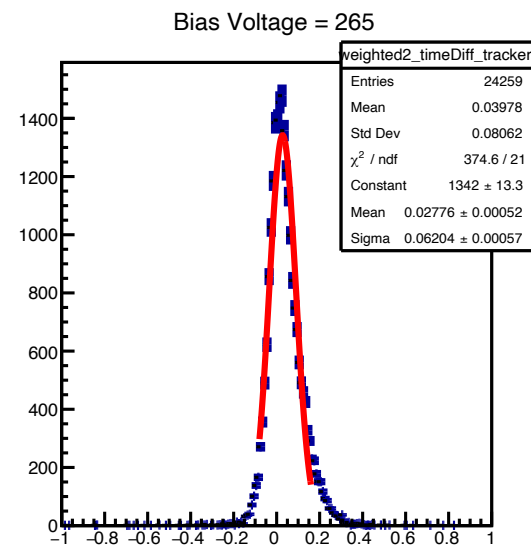
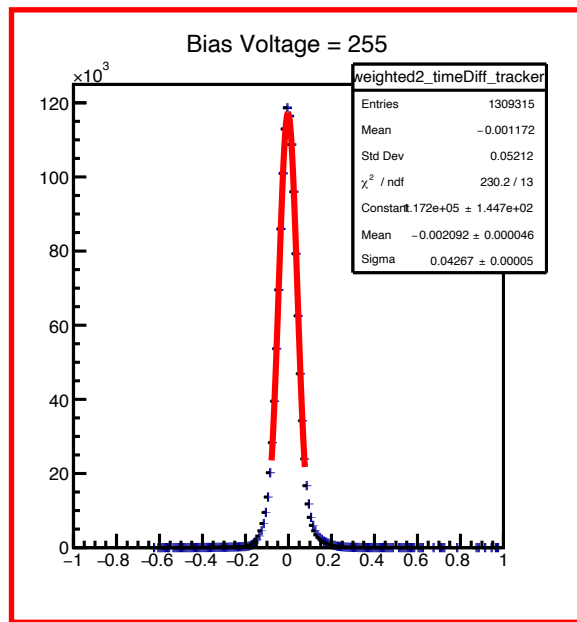
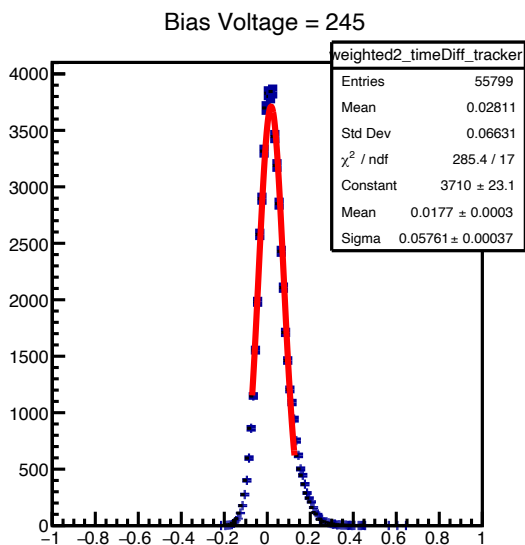
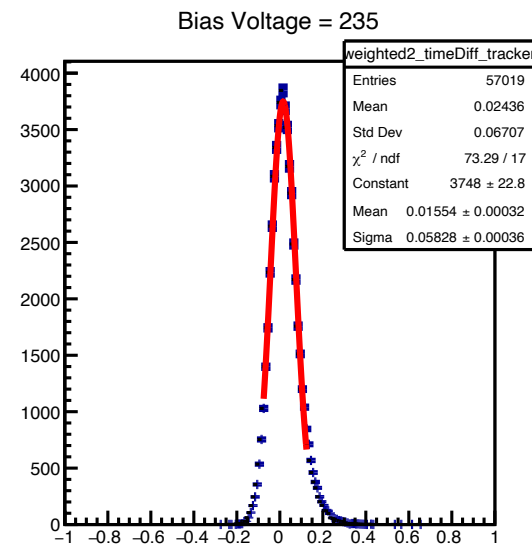
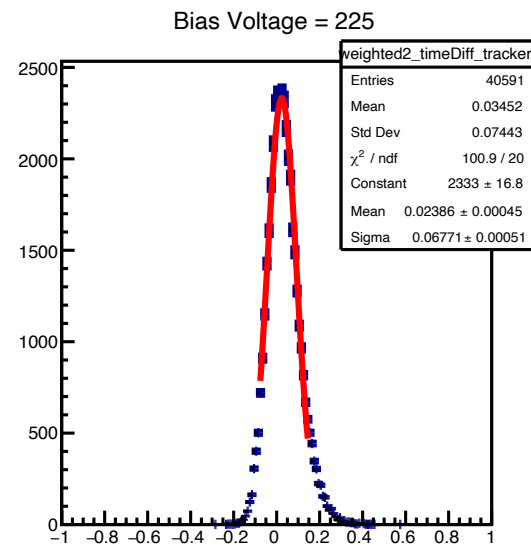
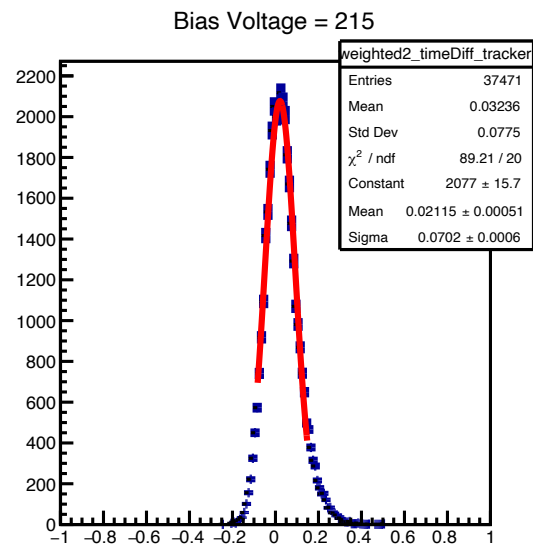
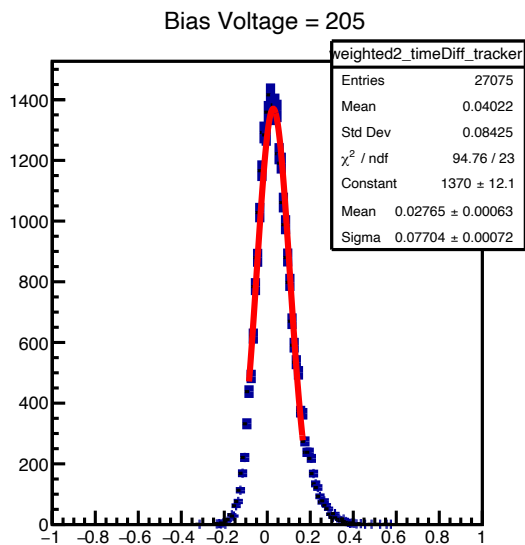




• EIC\_W1\_1cm\_500up\_200uw : Global Time Resolution (Single Channel w/ Tracker Correction ) vs. Bias Voltage

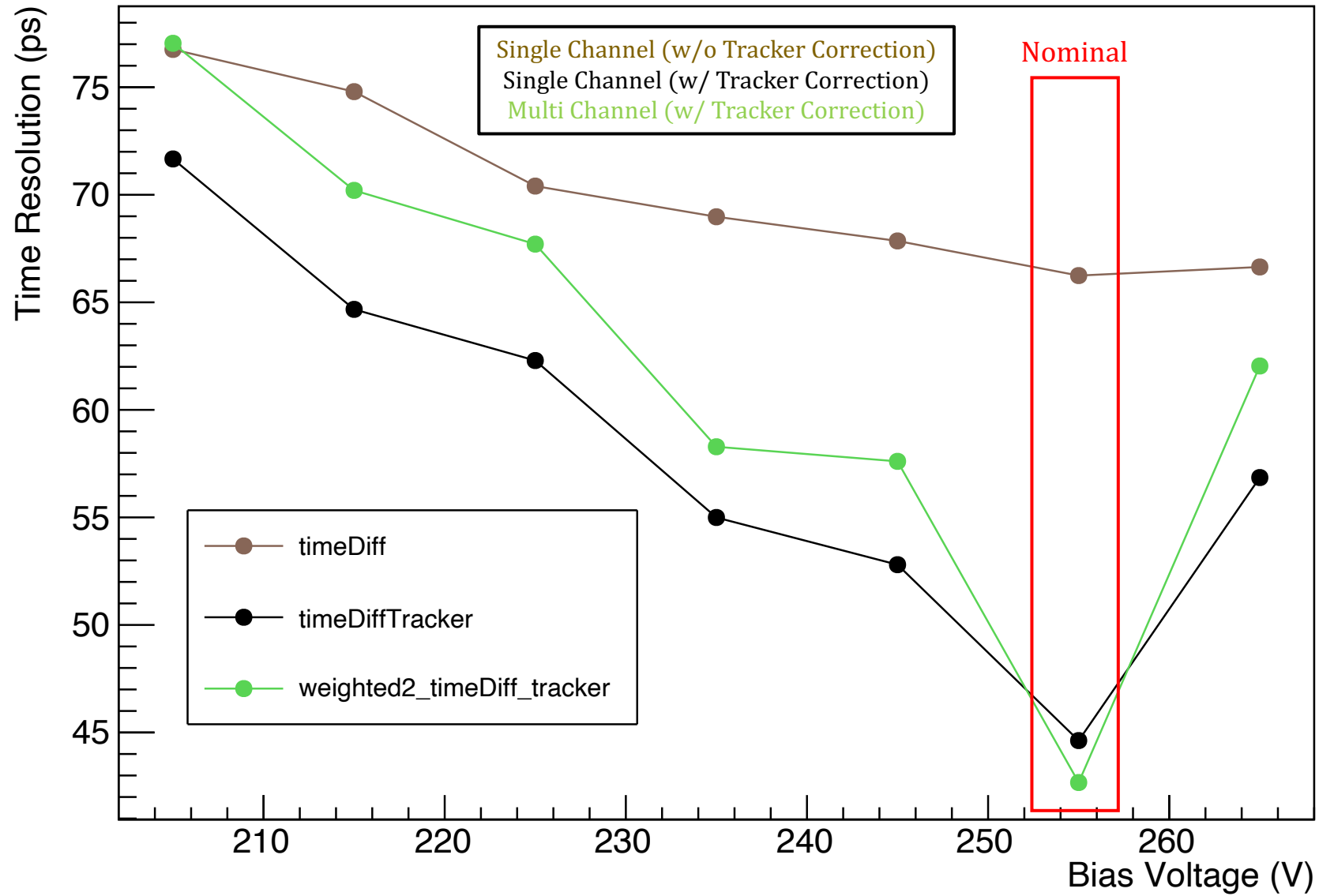


• EIC\_W1\_1cm\_500up\_200uw : Global Time Resolution (Multi Channel w/ Tracker Correction ) vs. Bias Voltage



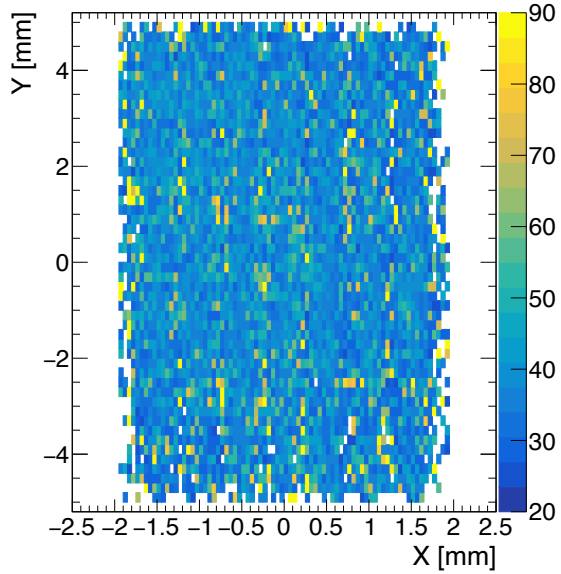
- EIC\_W1\_1cm\_500up\_200uw : Global Time Resolution vs. Bias Voltage

## Time Resolution (Global) vs. Bias Voltage

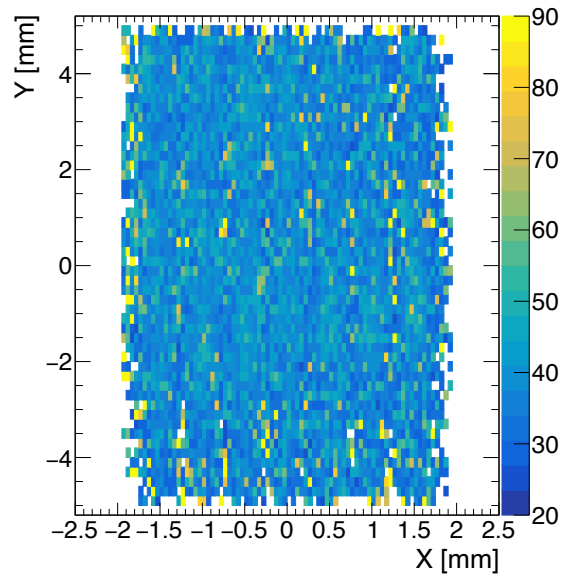


- EIC\_W1\_1cm\_500up\_200uw : Regions of Interest

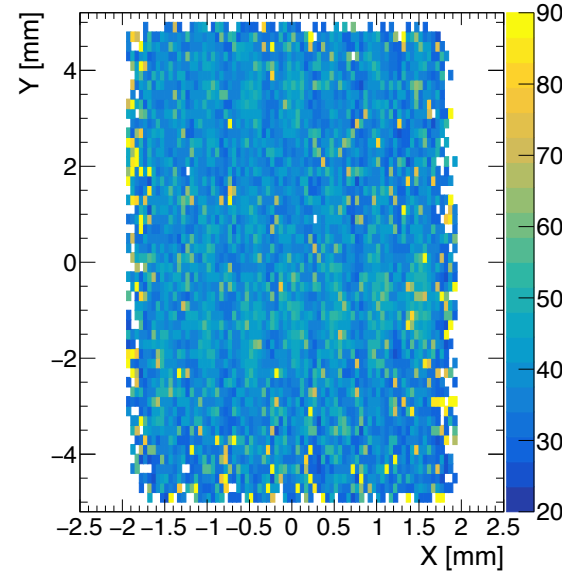
205V



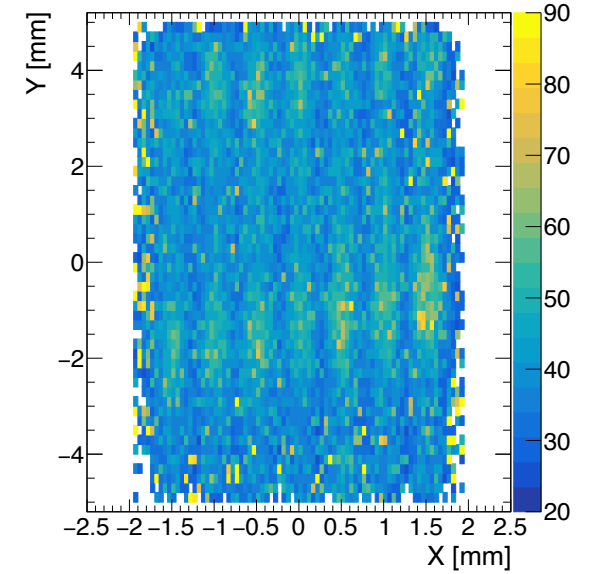
215V



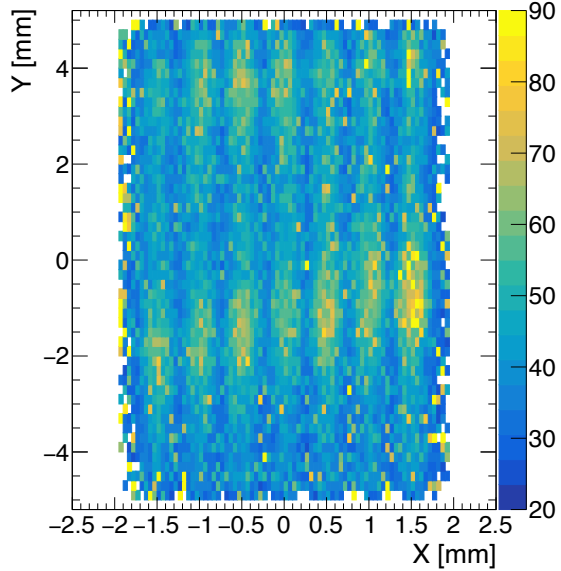
225V



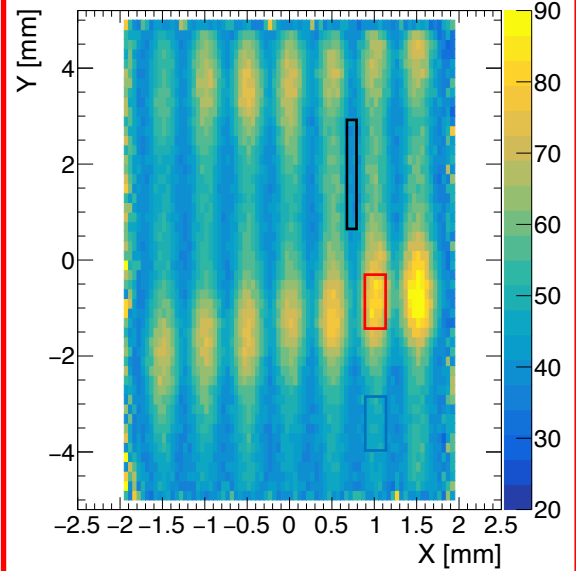
235V



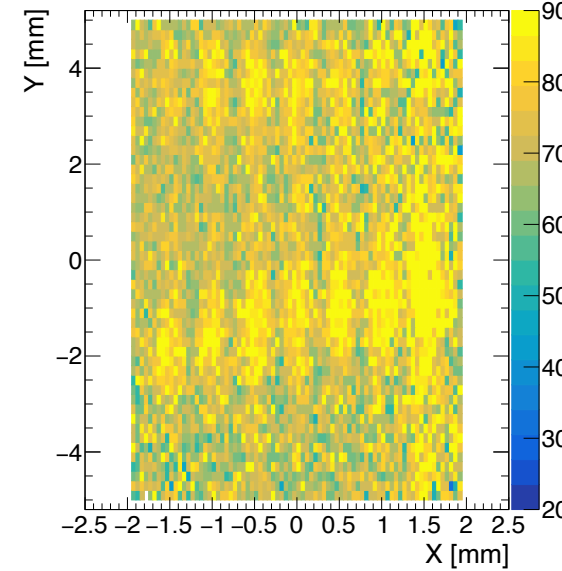
245V



255V

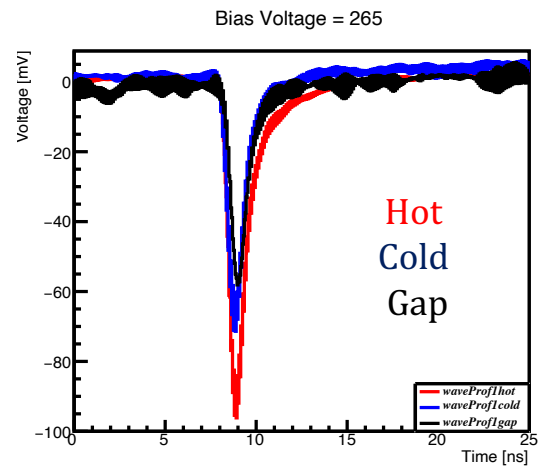
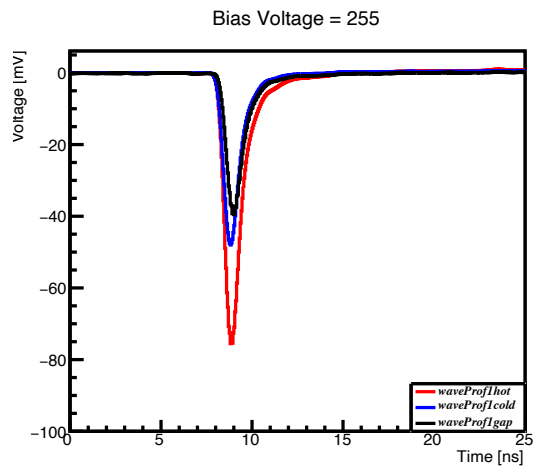
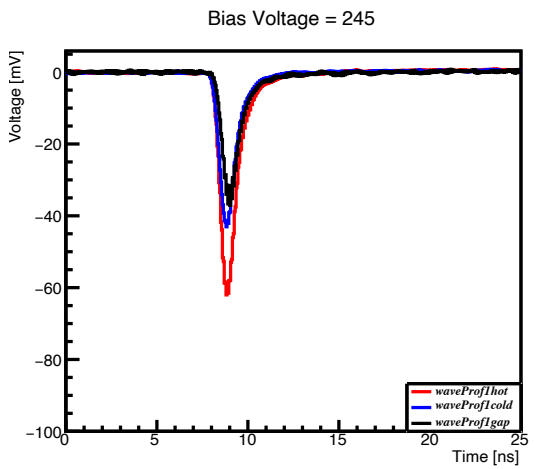
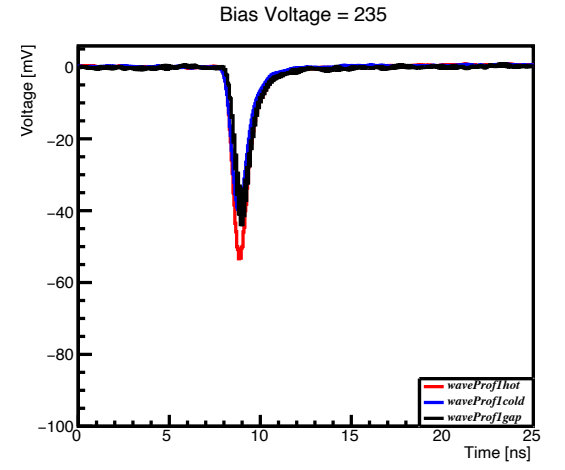
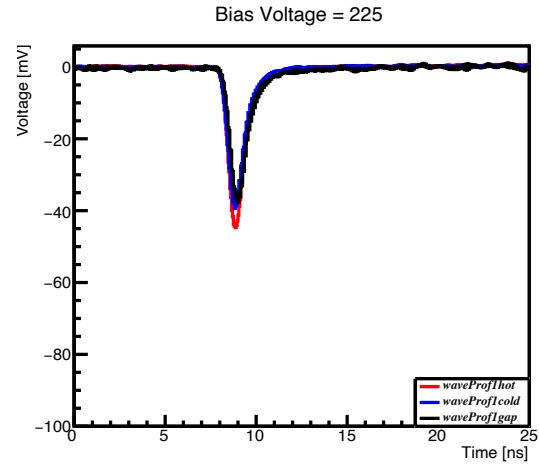
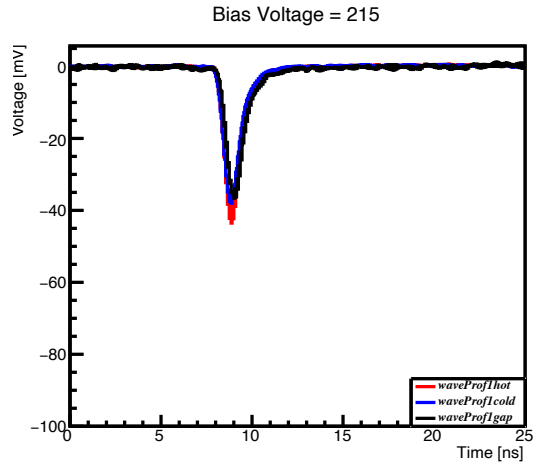
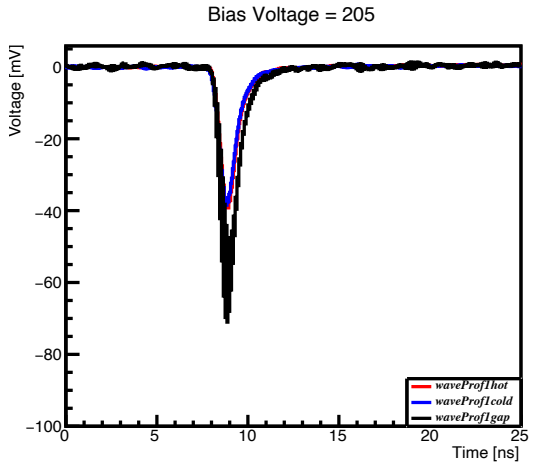


265V

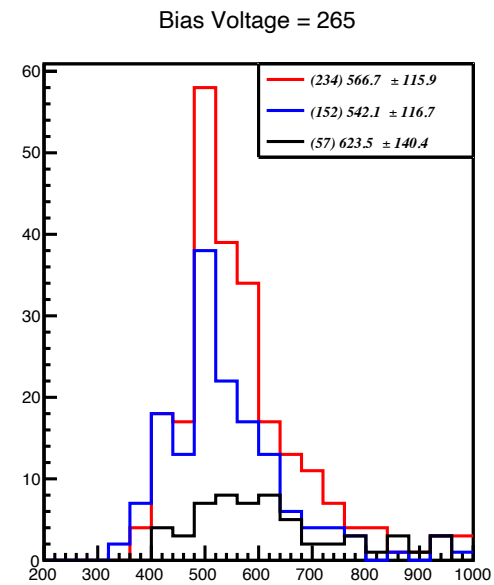
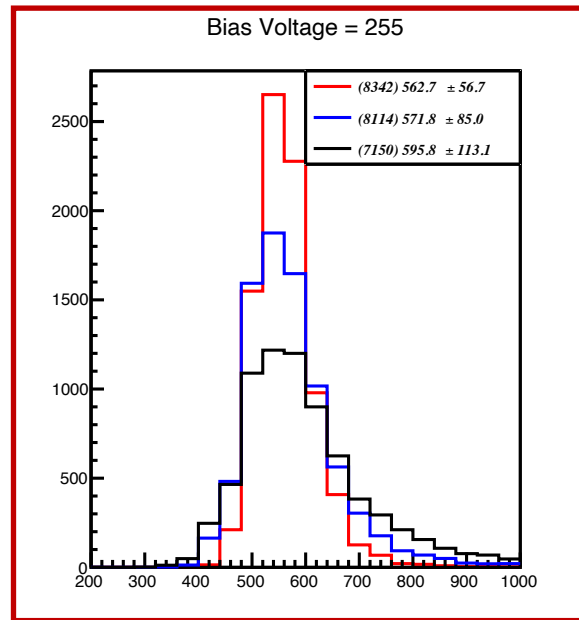
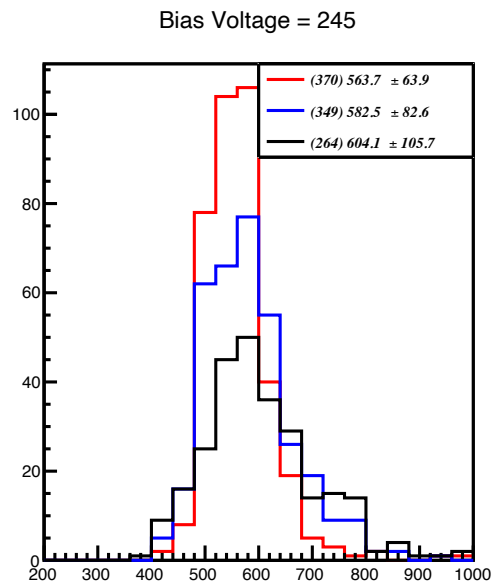
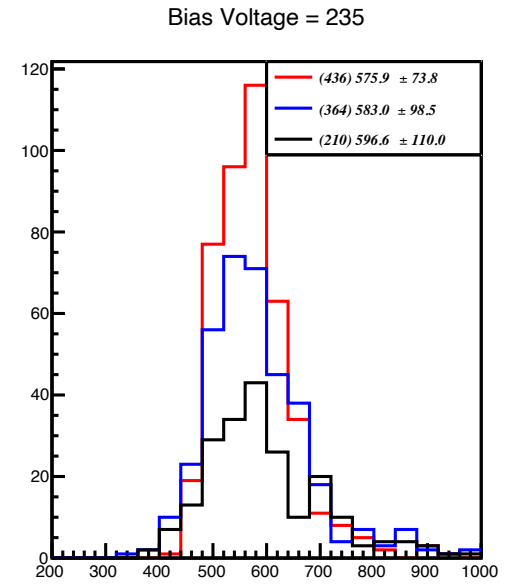
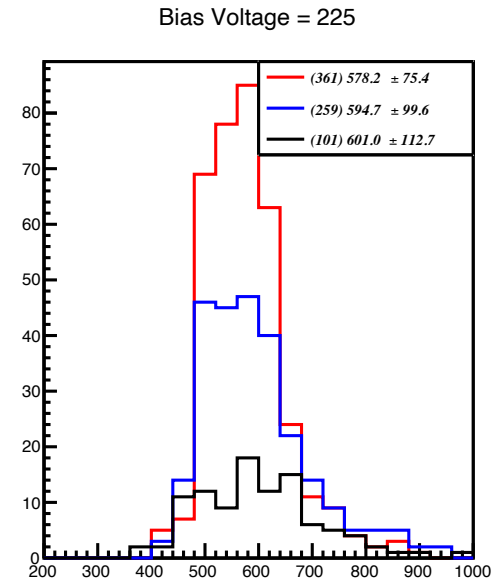
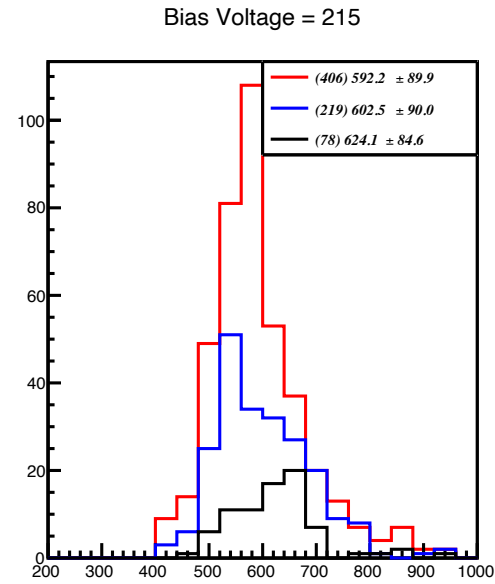
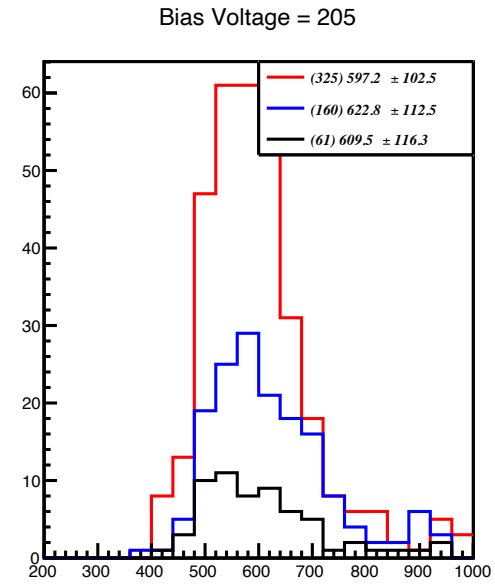


ROI for all Bias Voltages were kept same as selected in 255V

• EIC\_W1\_1cm\_500up\_200uw : WaveForm in ROI for different Bias Voltages



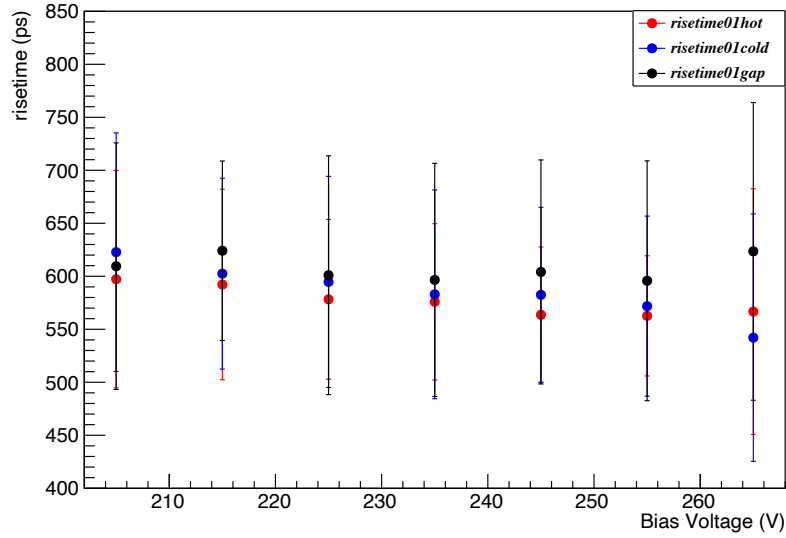
- EIC\_W1\_1cm\_500up\_200uw : risetime in ROI for different Bias Voltages



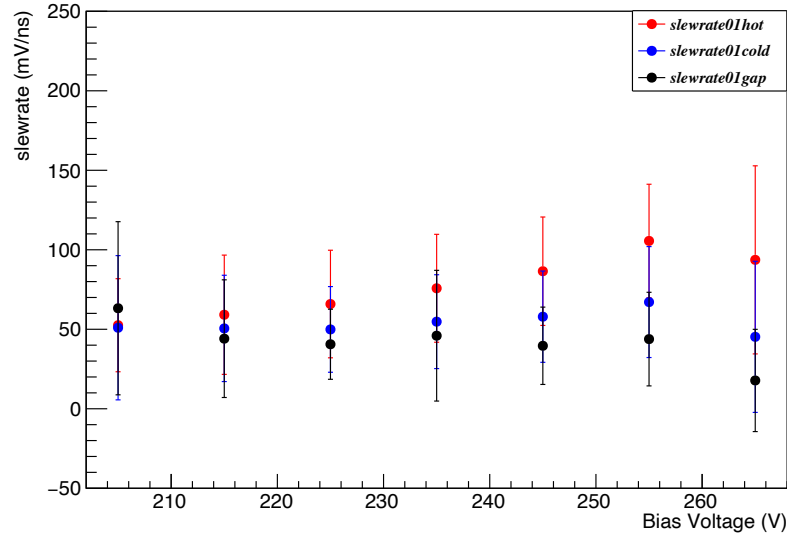
Hot Cold Gap  
 (Entries) Mean ± RMS

- EIC\_W1\_1cm\_500up\_200uw : Pulse Shape Variables in different Bias Voltages

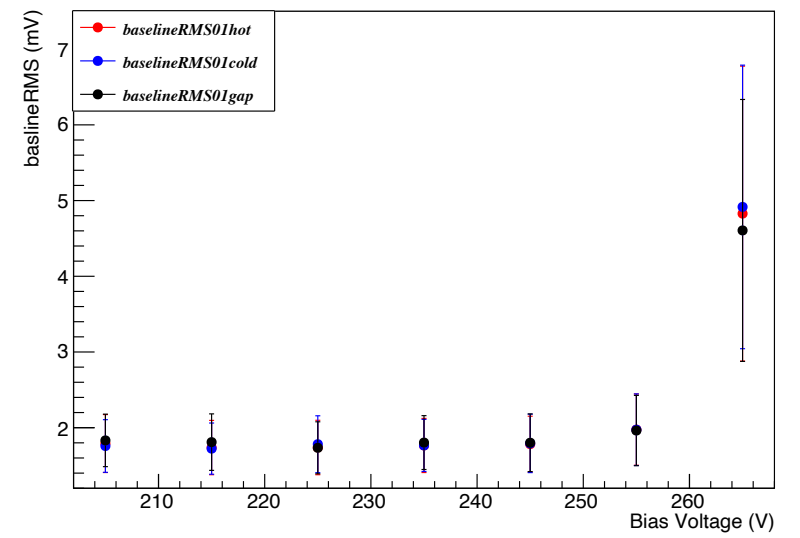
risetime vs. Bias Voltage



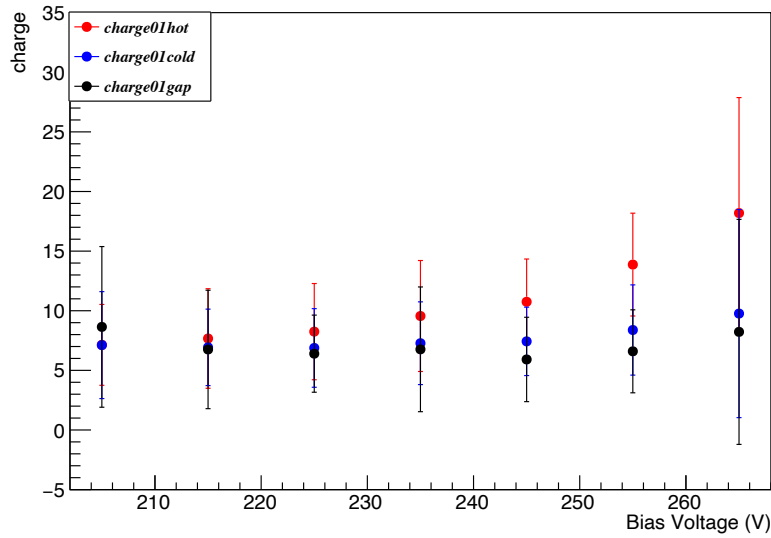
slewwrate vs. Bias Voltage



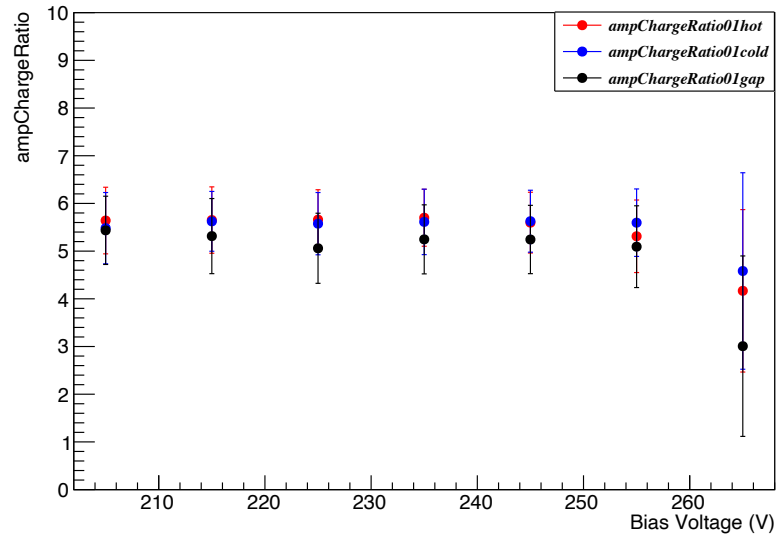
baselineRMS vs. Bias Voltage



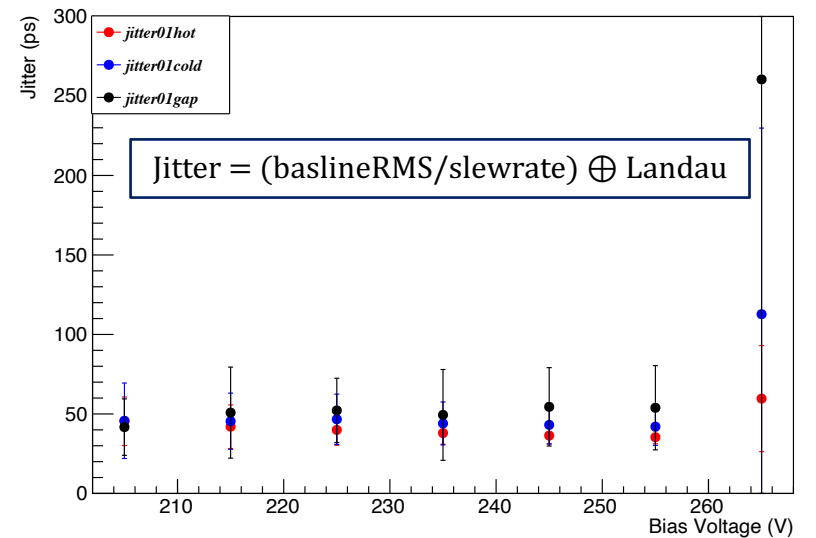
charge vs. Bias Voltage



ampChargeRatio vs. Bias Voltage



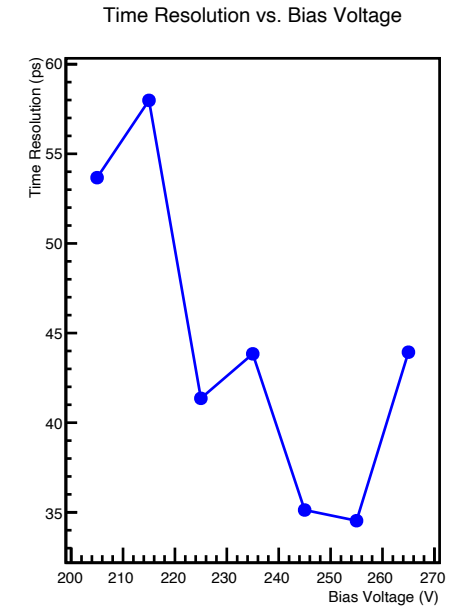
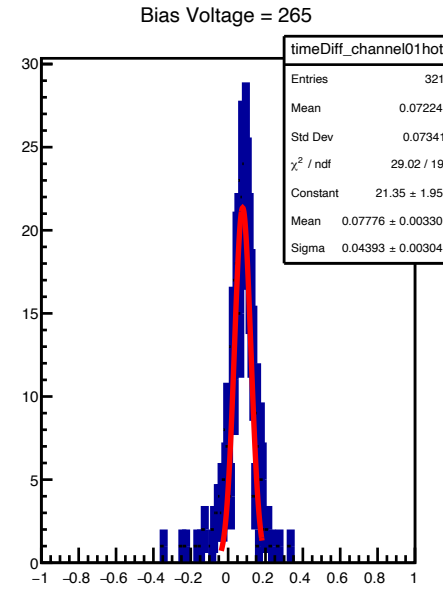
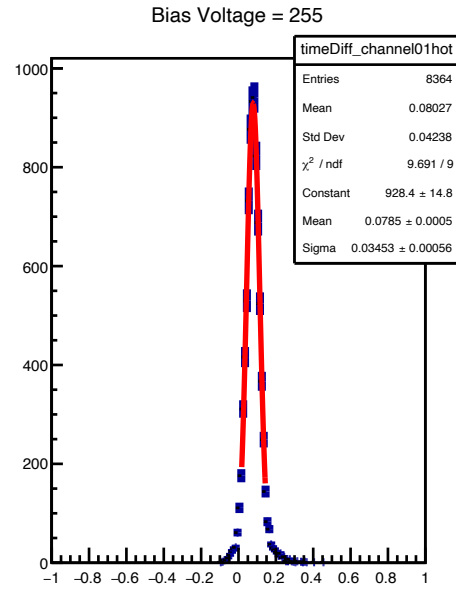
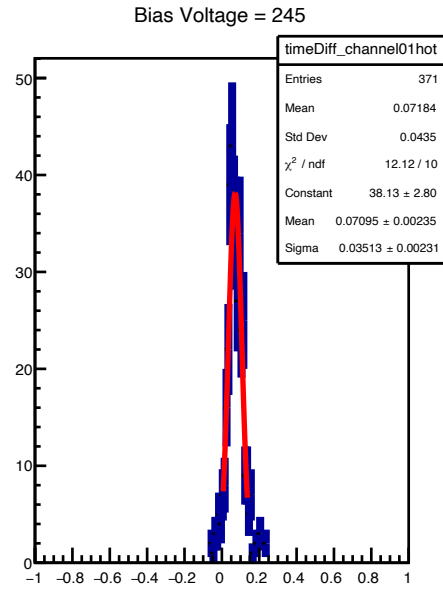
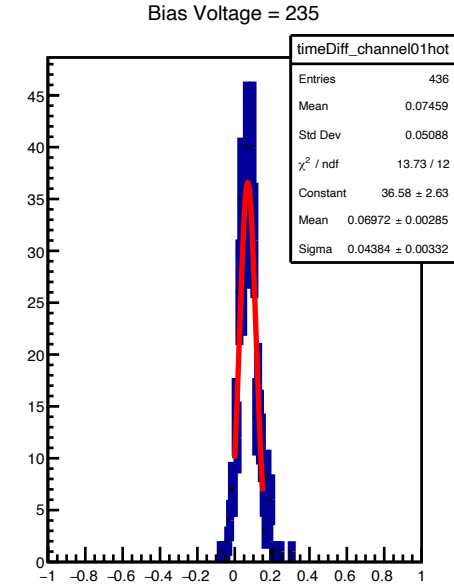
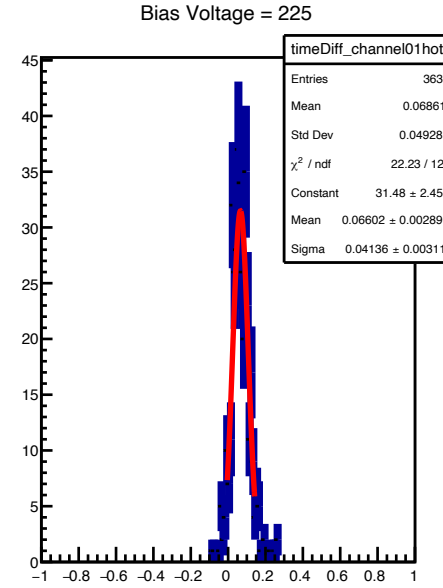
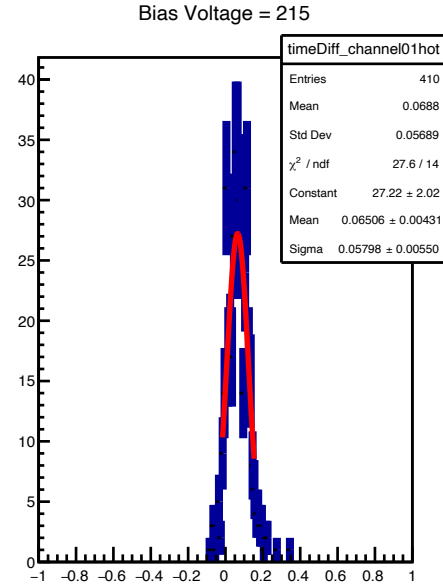
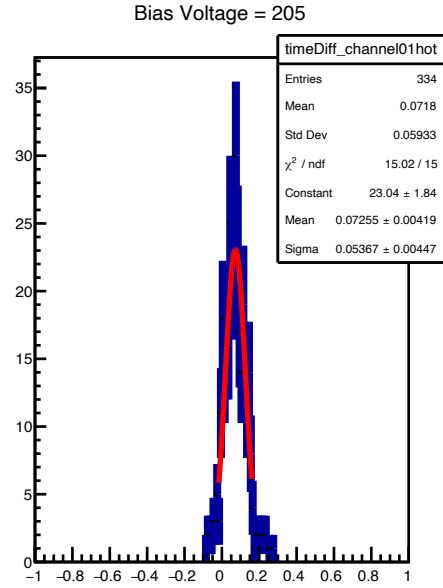
Expected Jitter vs. Bias Voltage



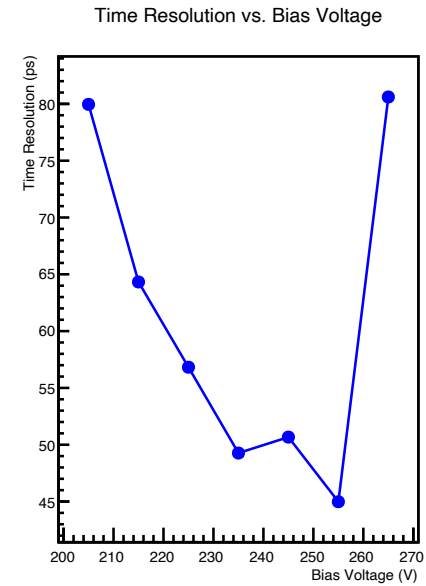
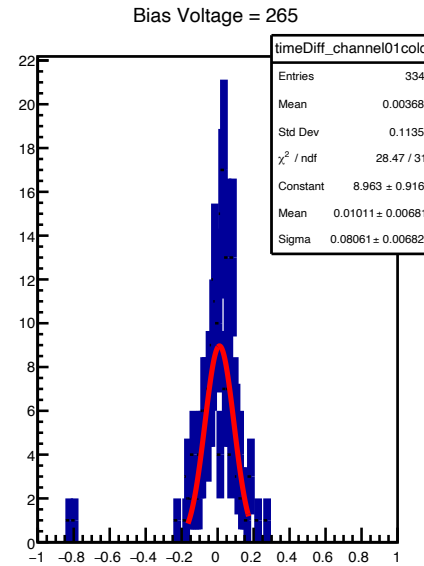
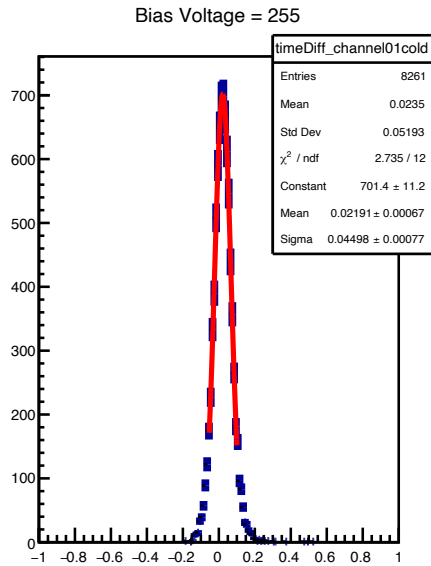
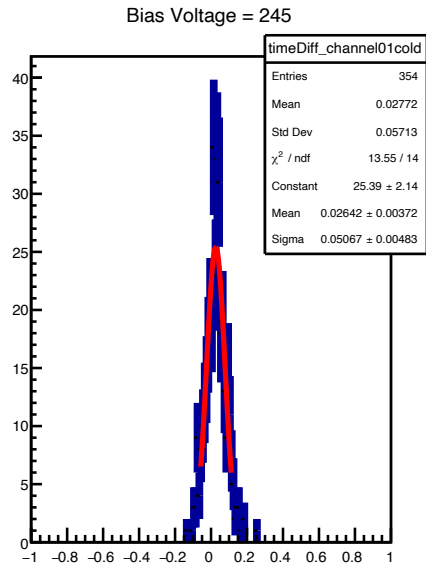
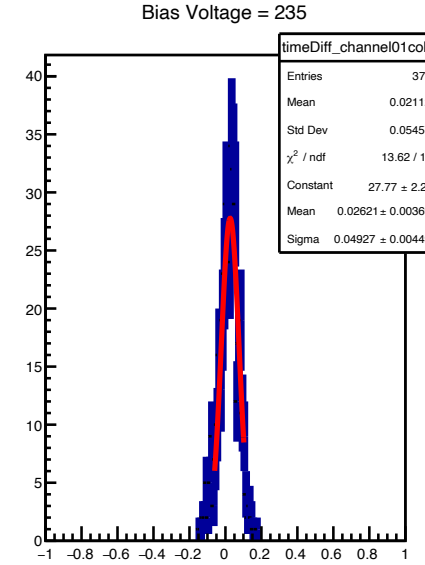
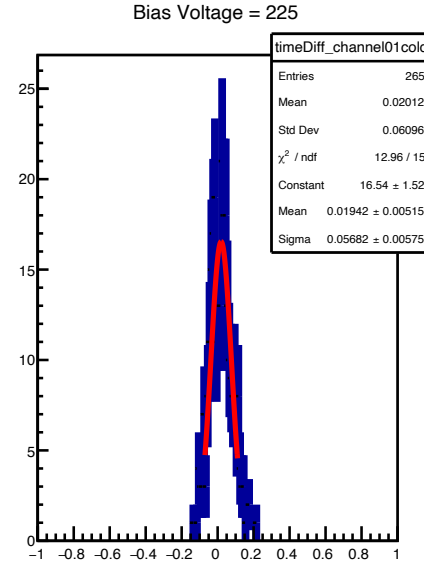
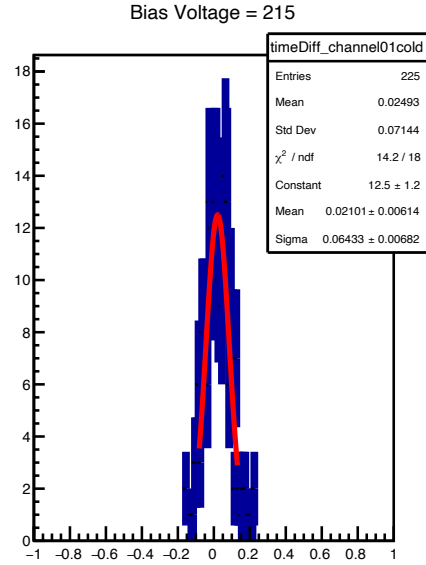
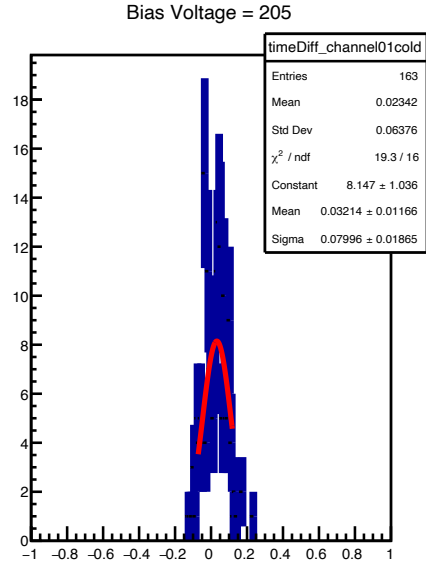
Extra Slides



• EIC\_W1\_1cm\_500up\_200uw : Measured Jitter (Low Statistics in ROI - Hot)



• EIC\_W1\_1cm\_500up\_200uw : Measured Jitter (Low Statistics in ROI - Cold)



• EIC\_W1\_1cm\_500up\_200uw : Measured Jitter (Low Statistics in ROI - Gap)

