

- DUNE is an international experiment aimed at making ground-breaking discoveries relating to the origin of matter.
- The collaboration is made up of over 1400 collaborators from over 200 institutions in over 30 countries.

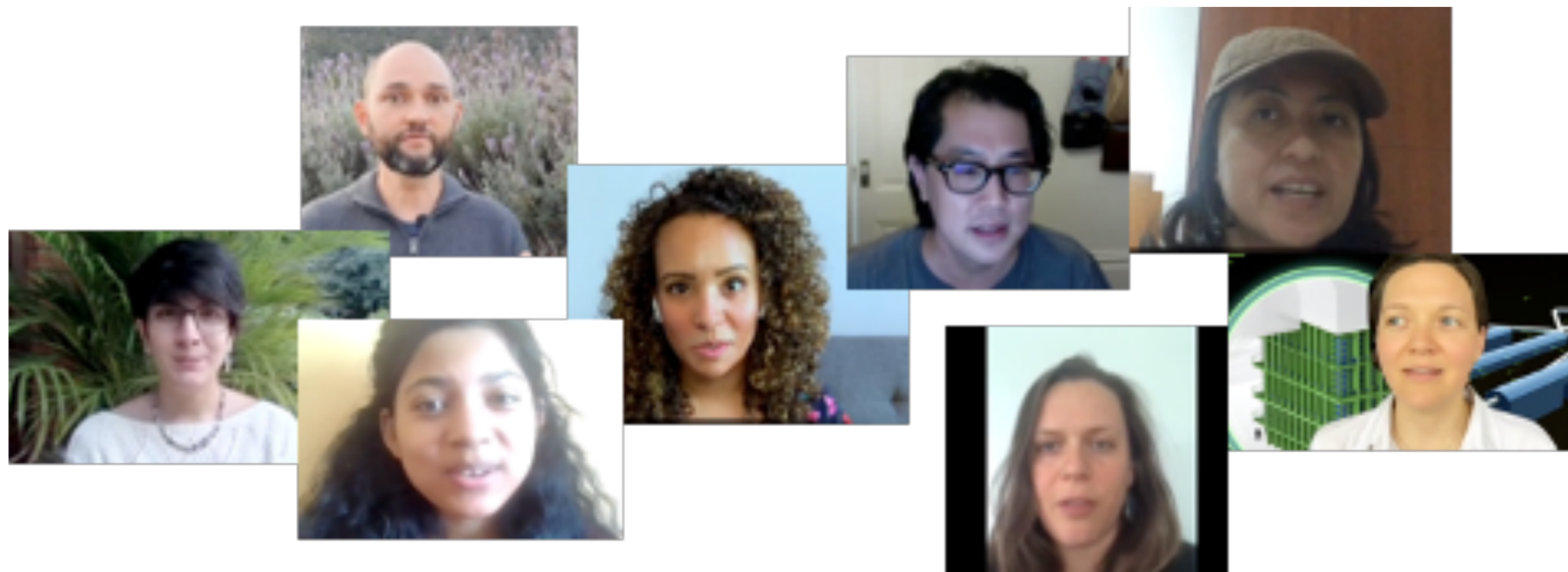


DUNE outreach committee

- Committee: Mateus Carneiro (BNL), Linda Cremonesi (QMUL), Kirsty Duffy (Fermilab), Maxine Hronek (Fermilab), Helio da Motta (CBPF), Albert de Roeck (CERN), Kate Shaw (USussex) chair
- Responsible for education and outreach activities in collaboration with DUNE management.
 - Initiate, plan, and organize education and outreach activities related to DUNE science goals and technologies.
 - Work with the Fermilab Communications team to develop material communicating DUNE science to the public, including DUNE's public web presence.
 - Maintain the social media presence of the DUNE Collaboration.
 - Coordinate education and outreach activities with other collaborations.
 - Centrally support local DUNE education and outreach activities organized by DUNE collaborators at an appropriate level.
 - Approve centrally used DUNE education and outreach material.
- [We want to join IPPOG!](#)

Neutrino day!

- Virtual Neutrino Day – Sanford Lab <https://www.neutrinoday.com/>
 - Ryan Patterson represented DUNE in an interview with Brian Marlow, Earth's Premier Science Comedian.
- We also had a video of DUNE collaborators doing a Q&A.



DUNE in Quarantine

- We asked people to send a "day in the life" during the beginning of COVID. Lots of bread, home projects, office assistants and even a socially distant graduation.
- We shared these on our social media platforms.
- Find us at "dunescience" on Twitter, Facebook and Instagram



Youtube channel

- Videos to showcase different institutions contributions to DUNE on our youtube channel

