

Welcome

2x2 analysis workshop, January 2022³

LHEP/AEC, Uni Bern

Michele Weber

u^b Bern

Capital of Switzerland

150k inhabitants (city), 1M canton, 10M CH

Early settlements 200 BC

«Zähringer city» founded 1191
(Freiburg D, Thun, Murten, ...)



Aare river

City-State growing toward West, Zytglogge 1191,
Käfigturm 1345, Christoffelturm 1622

In Swiss confederation since 1353

Conquered Aargau and Vaud in 15th, 16th c.

Napoleon 1798, re-established Switzerland 1803,
new CH constitution 1848 (neutrality)



Stadt Bern



Kanton Bern
Canton de Berne

u^b The University of Bern

8 faculties, 532 Full Prof, 5k employees, 20k students

Founded 1834

5 key areas:

Sustainability, Health and Medicine,
Matter and Universe, Intercultural knowledge, Politics
and Administration



12 Competence-Centers, 3 in physics:
Albert Einstein Center, Space and Habitability,
Climate Change research

Laboratory for High Energy Physics
~ 60 People; Neutrino, Collider Physics, Neutron,
Detector Developments, Medical Applications

No campus, many sites around town, including
Toblerone and VonRoll factory



u^b
**UNIVERSITÄT
BERN**

AEC
ALBERT EINSTEIN CENTER
FOR FUNDAMENTAL PHYSICS



u^b Location of workshop

Building called “Ex-Wi”
Exakte Wissenschaften

B77 and B78:
Available breakout rooms

B7: Meeting lecture room



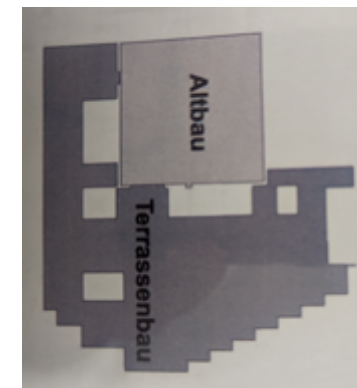
-2(B)
(B-Boden / U2)

“older” part of building
With rooms 900(lowest)/800/700/100
Dark tiles floor

“newer” part of building
Offset ½ floor, turquoise vinyl floor
With rooms A (highest), B, C

B52: LHEP
Meeting/coffee room

**Workshop Coffees
in Wandelhalle (same as Thu am)**



u^b

ExWi 1876 — 1959



H. Greinacher
as director 1924 — 1952

u^b 2x2 analysis workshop

Thursday

10:00 arrival/coffee

10:30 session

12:00 lunch

13:15 session

15:00 coffee

15:30 session

19:30 dinner

Friday

09:00 session

10:30 coffee

11:00 session

12:30 lunch

13:30 session

15:00 coffee

15:30 session

17:30 end

Saturday

09:00 facility tour

10:00 coffee

10:30 session

11:30 break/lunch

13:00 reports/closing

15:00 end

<https://indico.fnal.gov/event/57076/>

<https://unibe-ch.zoom.us/j/64765613136?pwd=ZzN1cXVVckw3ZGFuS0pIT0pkSGhqZz09>

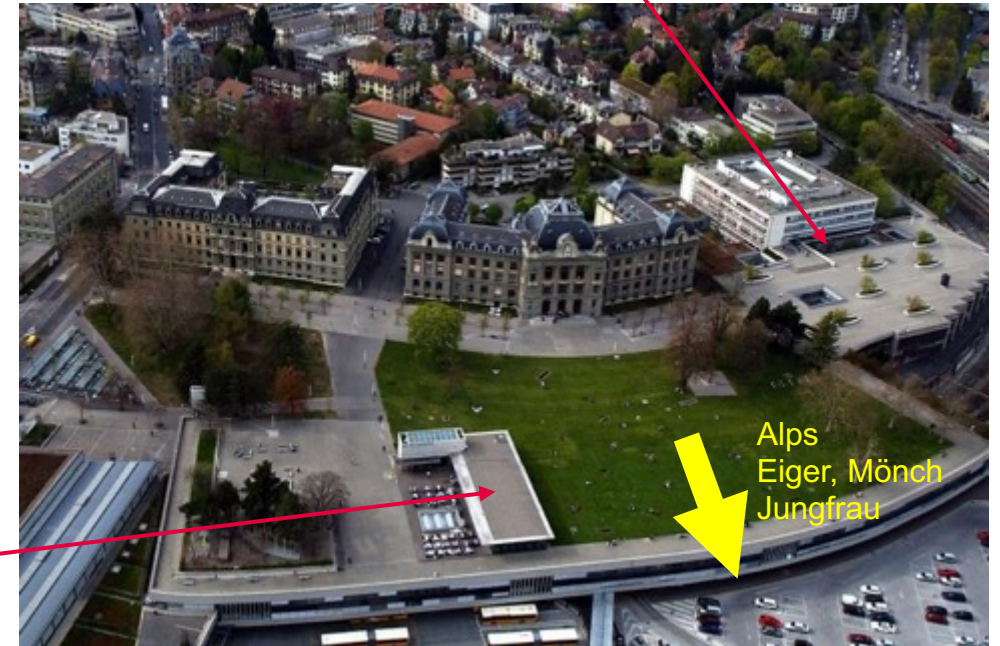
Lunch

NO organized lunches

Several places around University to get food

Reserved space in
Mensa «Grosse Schanze»
THU and FRI
(self-service, pay-on-your-own)

ExWi, Thu am welcome coffee



May look white, not green

u^b

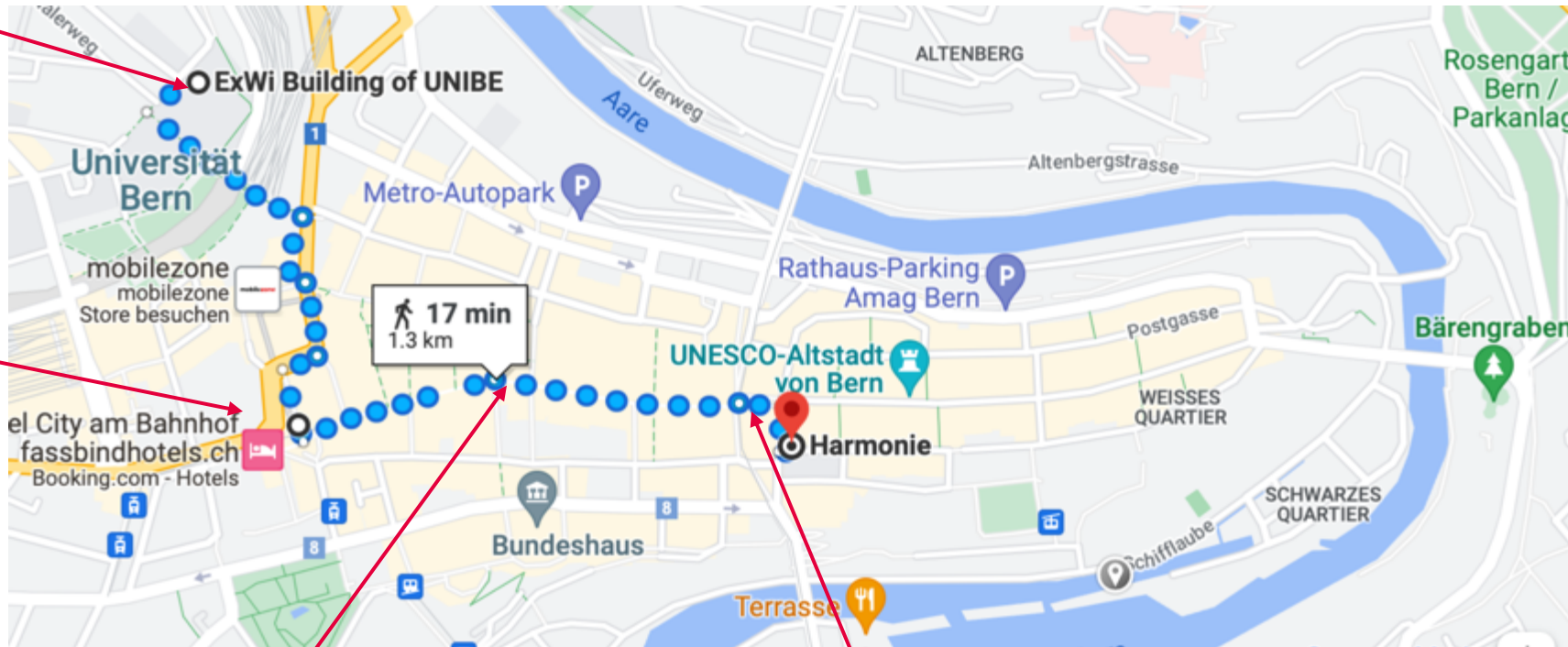
Conference Dinner Thu

19:30 TODAY

Restaurant Harmonie
Hotelgasse 3, 3011 Bern

ExWi

Christoffelturm



Käfigturm

Zytglogge

u^b

Practicalities

Have you registered ? Also for dinner ?

Did you pay the conference fee ?

LHEP secretariat in Room 133/138, or call 44064

Call Michele at 45146 (+41316845146) or Slack

WiFi: Eduroam, or public-unibe (ask me for code)

Emergency number 112

There is no parking

u^b Lab safety

Please be mindful of work going in Grosslabor (mod-3)
[HV, ODH, trip and fall hazards, H, cryogenics, crane, delicate equipment]

The pit with the cryostat is a **NO-GO zone**

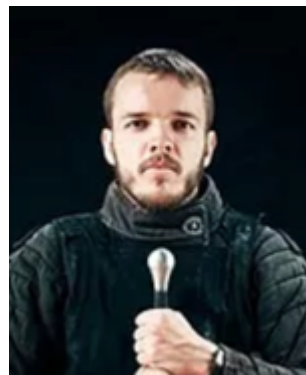
Saba, Livio or Jonas have full authority to dictate
who does (or does not), what and when and who has access



Saba



Livio



Jonas

Signs in corridor
about evacuation
information



u^b

Enjoy the workshop !

