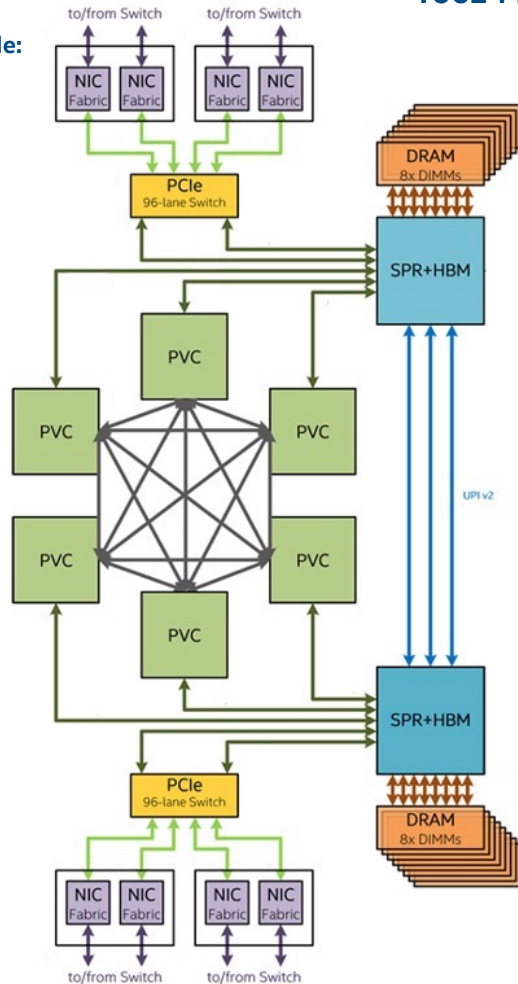
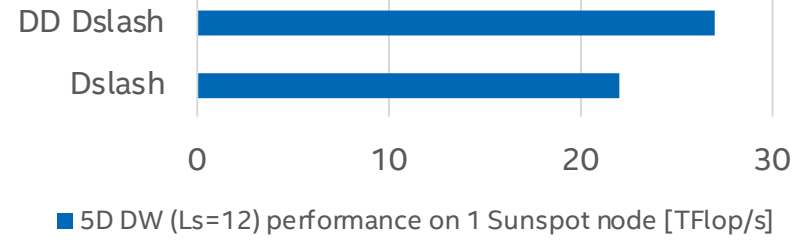


63744 GPUs
10624 nodes

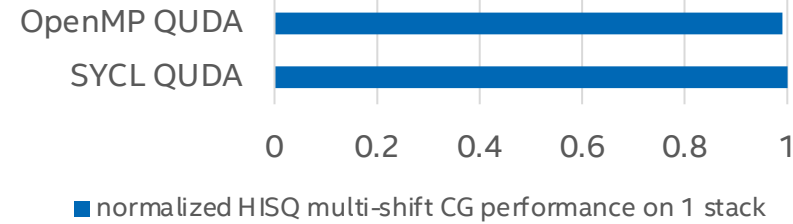
Node:



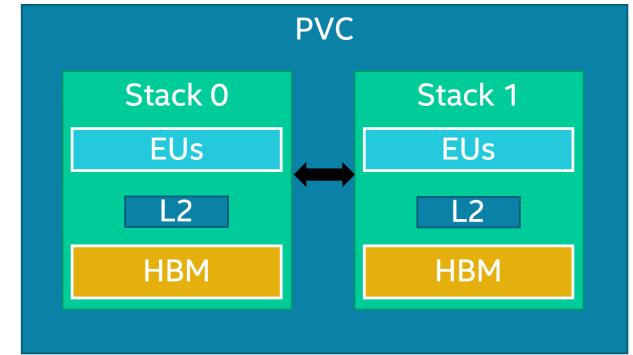
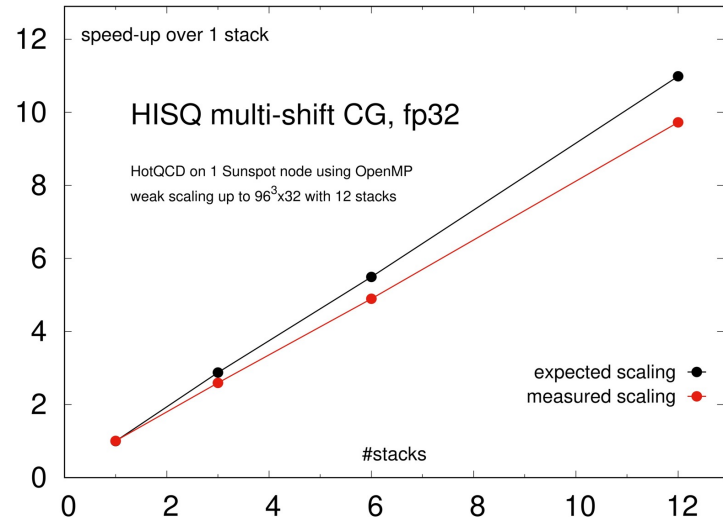
Peter Boyle:



James Osborn, Xiao-Yong Jin:

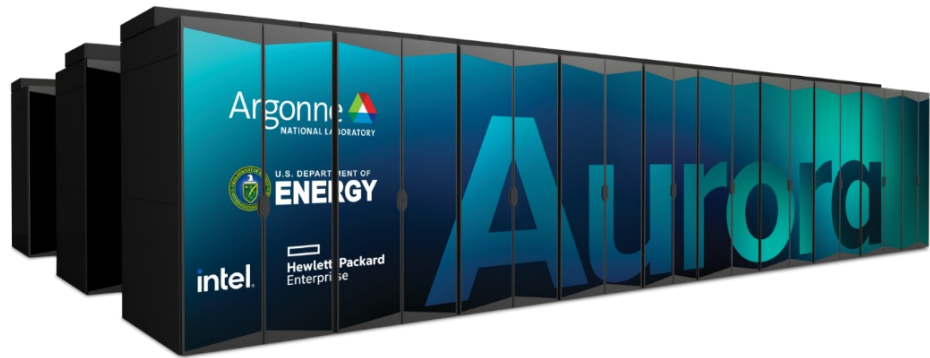


PS:



Intel® Data Center GPU MAX ¹	
STREAM ²	2.1 TB/s
L2 size ³	408 MB

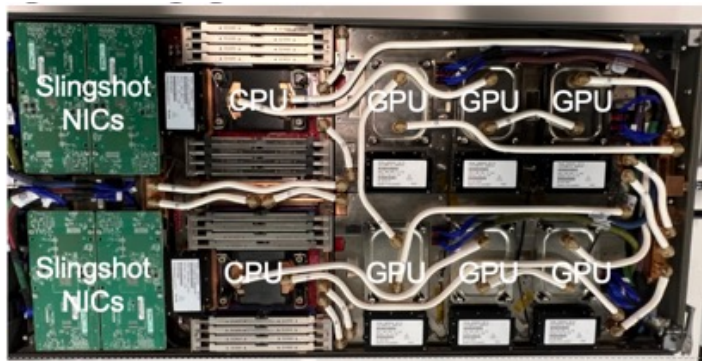
- 1) <https://ark.intel.com/content/www/us/en/ark/products/232873/intel-data-center-gpu-max-1550.html>
- 2) <https://www.intel.com/content/www/us/en/docs/oneapi/optimization-guide-gpu/2023-2/simple-examples.html>
- 3) <https://www.intel.com/content/www/us/en/products/details/discrete-gpus/data-center-gpu/max-series.html>



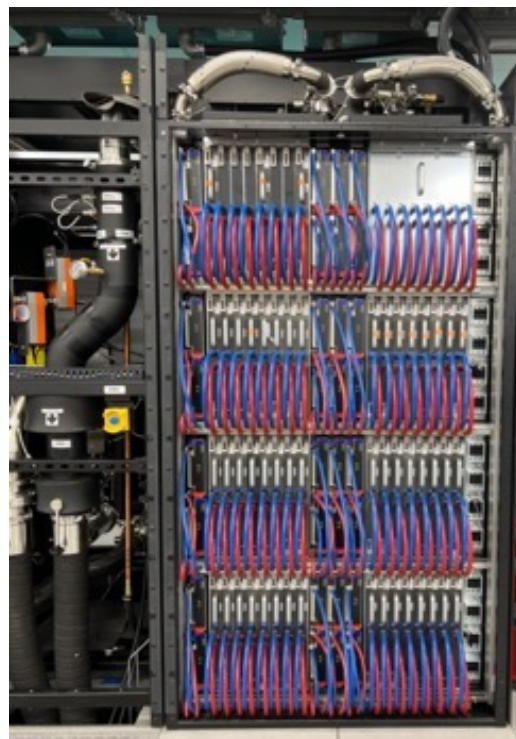
Aurora front and aisle view:



Node:



Rack:



PVC die:

