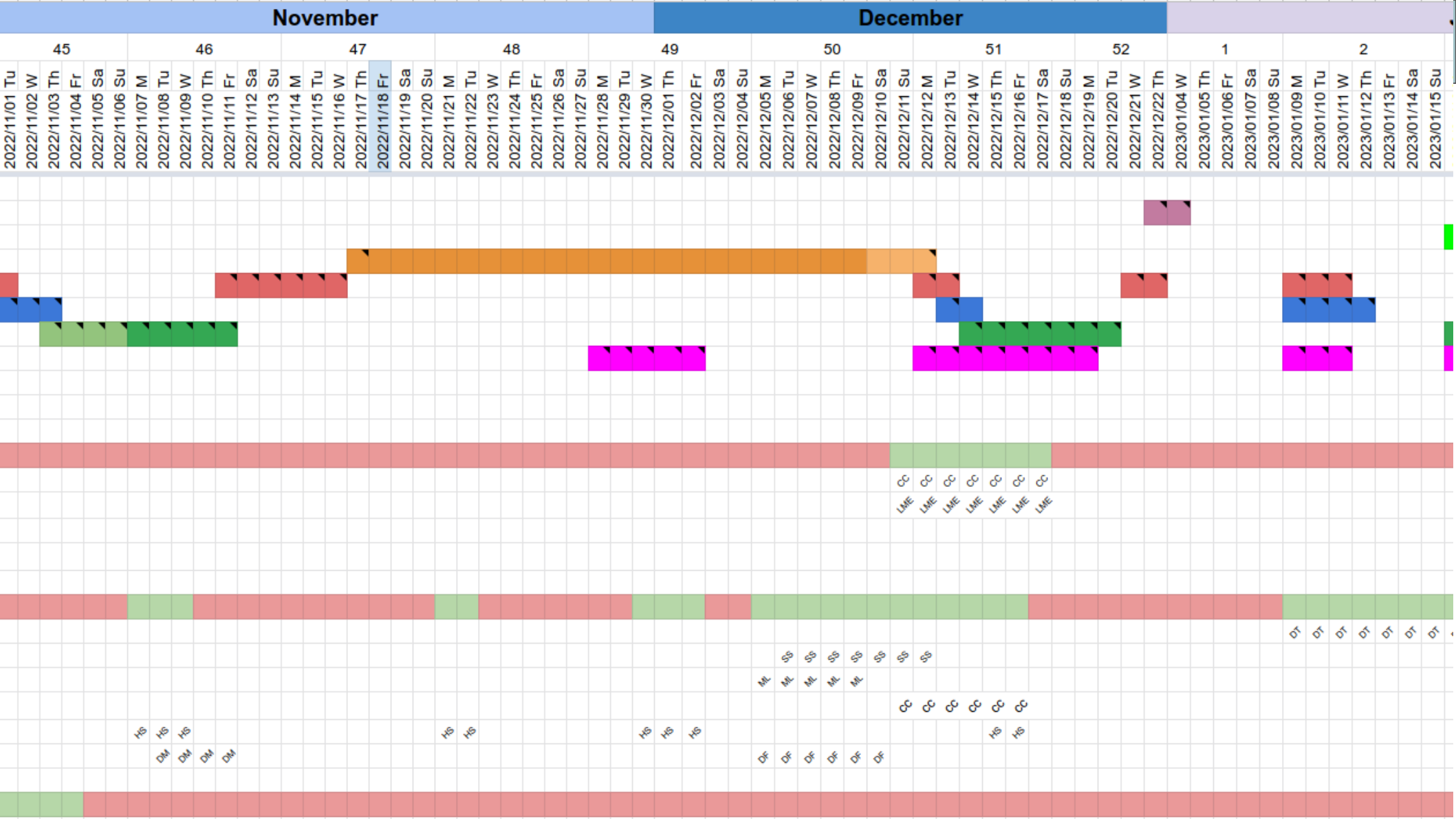


PDS End-of-year activities

- Cathode accessible 17/11
- Installation 17/11 to ~Monday 12/12
- Coldbox should be stopped by ~Dec 20th
- Data taking between ~Wed 14/12 and Dec 20th.
- Module 0 non TCO top membrane modules (2 xA + electronics):
 - Testing 12-20/12 and installation 9-11/01



PDS December Coldbox Plan

- CRP2b run :
 - <1week installation time end of October, data taking beg. November
 - Several system failures need to be understood and fixed
- Dedicated PDS run in December
 - Huge pressure: cathode data, wall readout, final SoF design.
 - we decide the times. More installation, less data taking.
 - Still, person power is critical
 - Debugging (why there was no signal from cathode and what issues in wall connection) and re-assembly of testing setup in 182
(Ajib @CERN for 2 weeks in november, Henrique will be there for some days)
 - Installation: replacement of at least 1 board on cathode, adding HD-style amplifier on wall, plus whatever needs to be done to fix issues.
(Several people at CERN during the week of Dec 5th: Sabrina, Bill, Drew – I think the rest are there for assembly?)

PDS December Coldbox Plan

- CRP2b run (:

-