



NOvA Operations (Month Nov 2022)

Proton PMG / All Experimenters' Meeting

Prabhjot Singh, Andrew Sutton, 1 Dec 2022

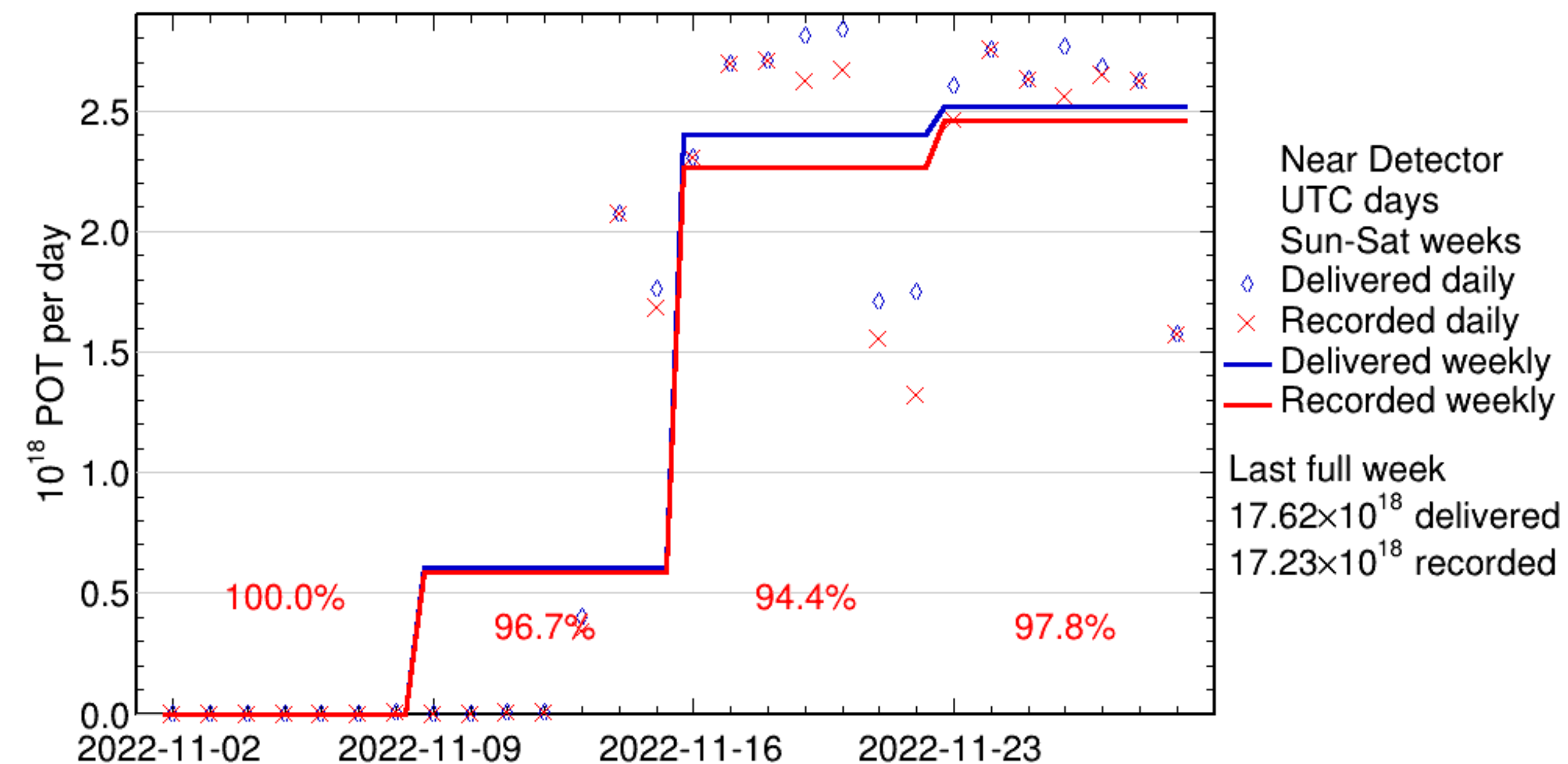
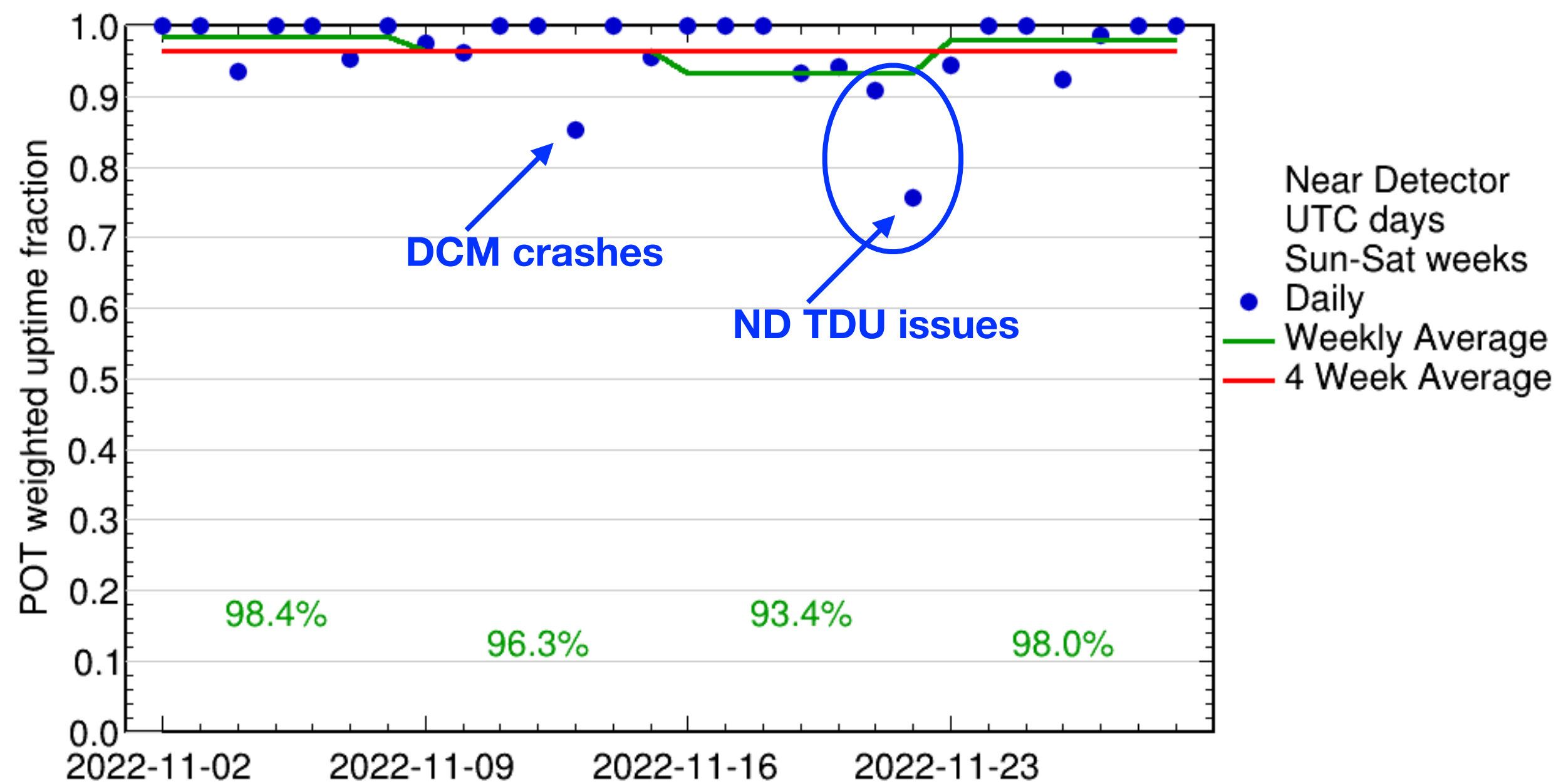


Operations Highlights

- **Thanks to all shifters and experts for keeping detectors running**
- NuMI beam returned on 13th Nov 2022 at 11 AM. Have seen beam power going up to 780 kW
- Target and beam scan studies were performed which led to new autotune parameters. We have updated beam data quality cuts accordingly
- NOvA continues to take checklist shifts and we encourage collaborators to take shifts from ROC-W or their university ROCs
- ROC-Cincinnati passed their second access test and will perform final official validation soon by taking 24 hours shadow shifts
- The ND TDU-2 lost connection to the satellite and had to be replaced by a spare one
- Free trial of Telzio will be available soon to test as an alternative to google voice
 - we are working with the lab's Computer Security board, g-2, and ICARUS on this
 - we have preliminary approval from the CS Board
 - the paperwork with procurement is in the works

Near Detector Summary

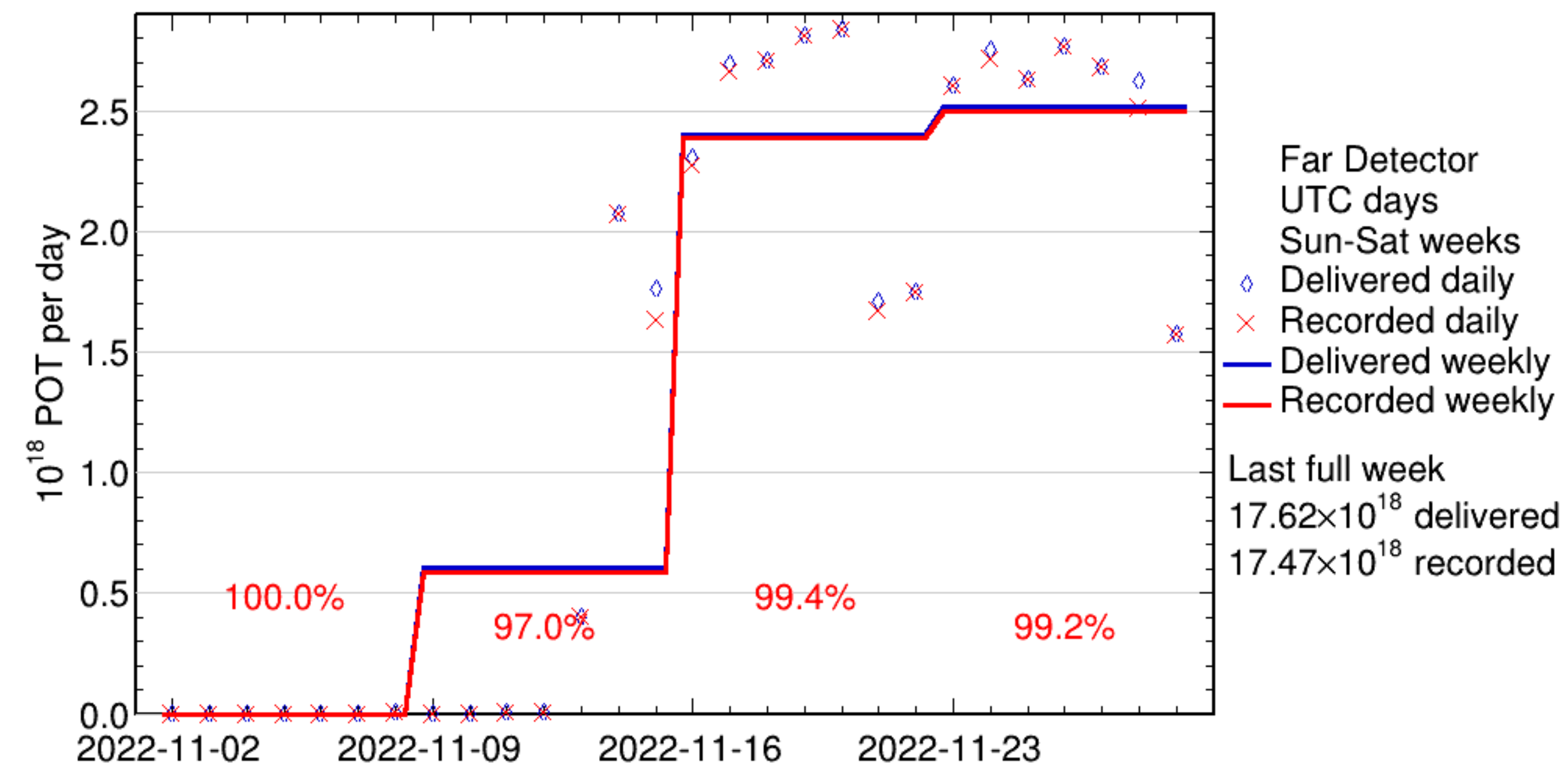
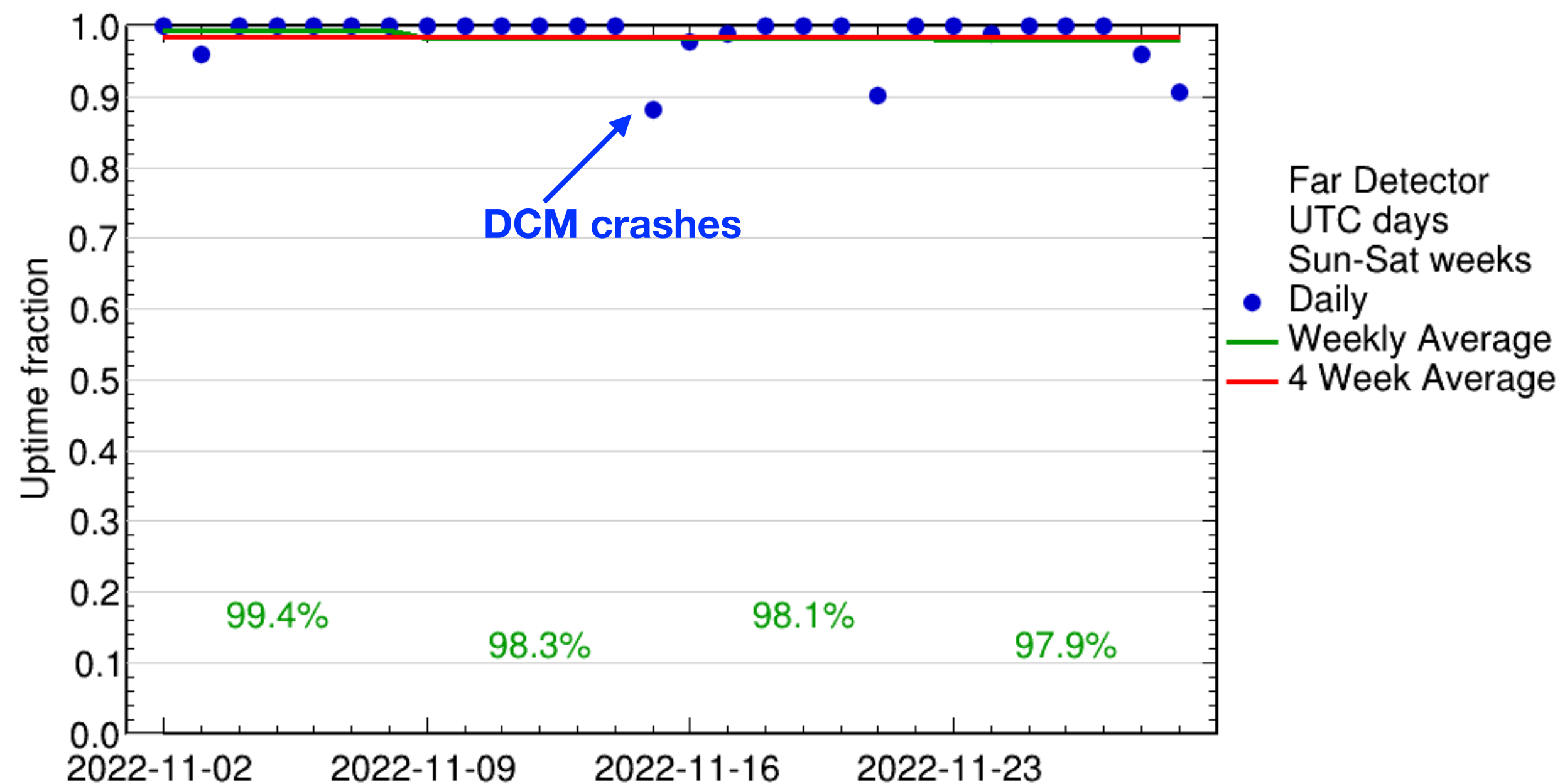
- 11/13: run crashed due to DCM-1-01-03 and DCM-1-02-02
- 11/20-22: ND TDU-2 disconnected
- Other minor crashes addressed promptly by experts
- Total POT recorded
 - Total: 36.57E20
 - FHC: 23.81E20, RHC: 12.76E20
- FY23 POT: 0.34E20 recorded, 0.36E20 delivered



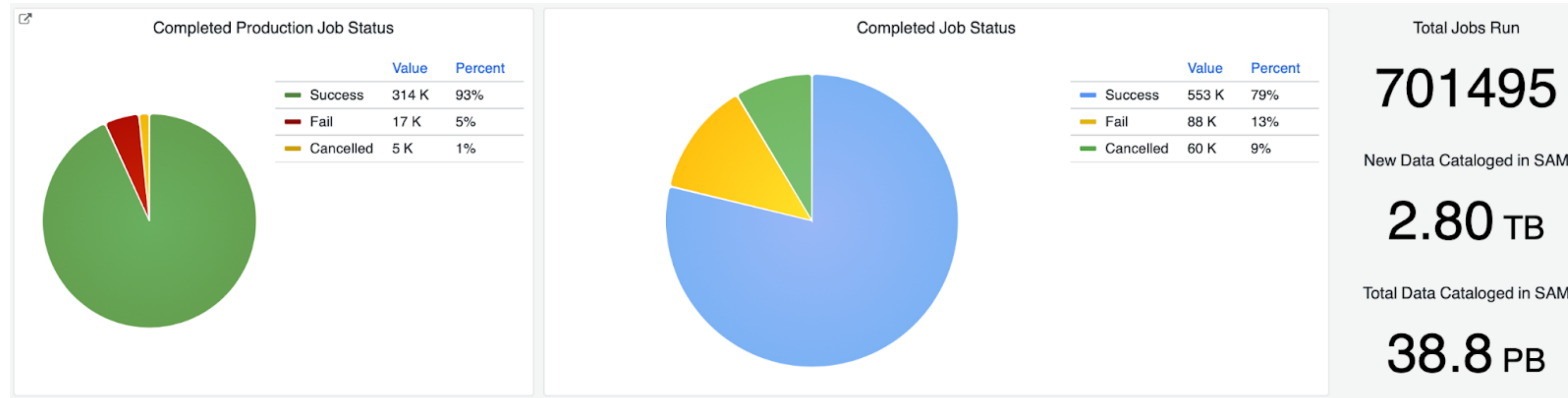
Far Detector Summary

- 11/15: run crashed, dcm-2-13-5 disconnected (~2.5hrs)
- Other minor crashes addressed promptly by experts

- Total POT recorded
 - Total: 39.04E20 (36.16E20 14kT Equivalent)
 - FHC: 26.35E20 (23.56E20 14kT Equivalent)
 - RHC: 12.69E20
- FY23 POT: 0.34E20 recorded, 0.34E20 delivered



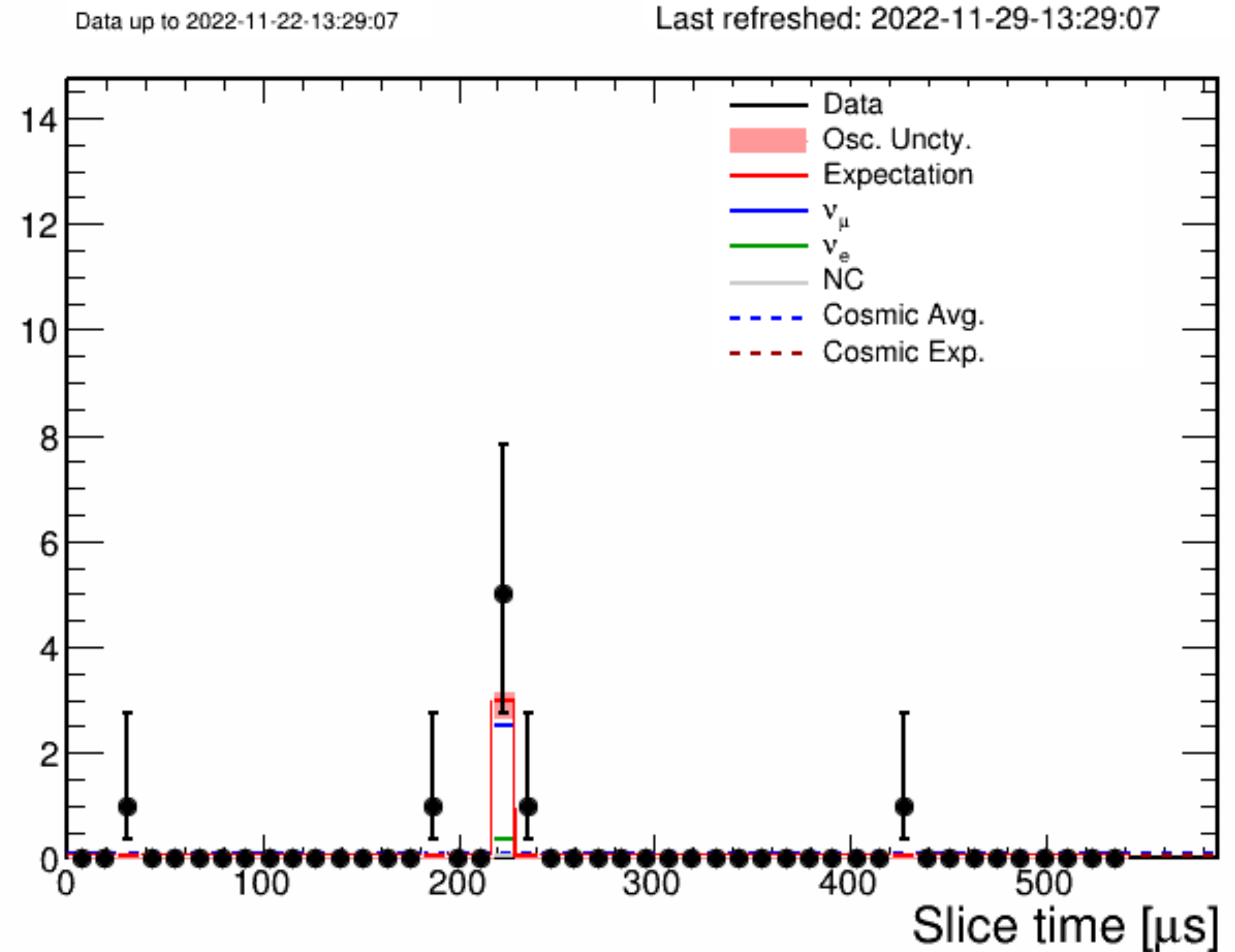
NOvA Production



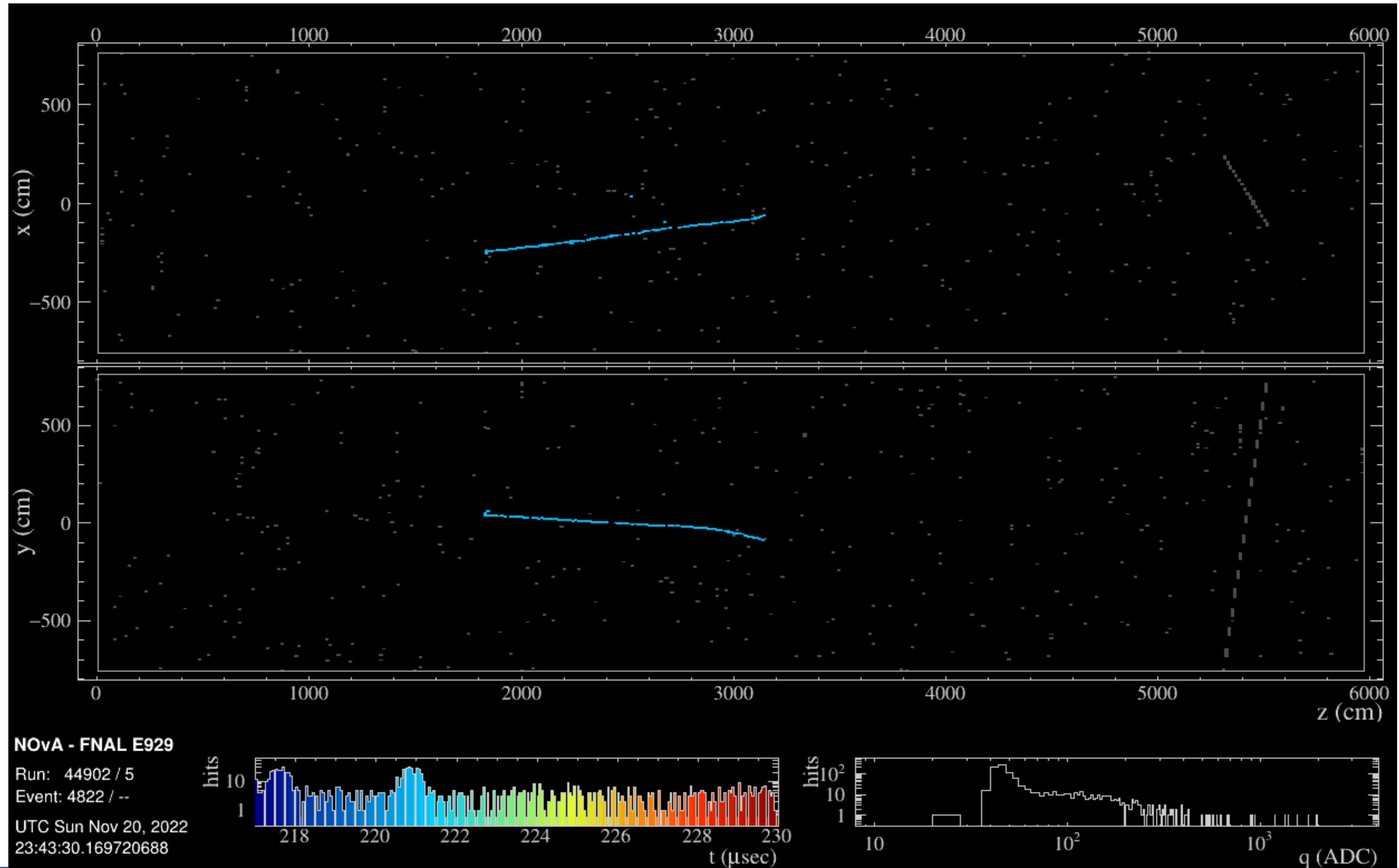
- Since the last PMG meeting, NOvA ran a total of 701k jobs, of which 336k were from production
- This month mainly focussed on samples for the test beam group
 - pclist and pcliststop files for calibration
 - data CAFs for their analyses
- Prestaged several samples for the purpose of using them as inputs for sample requests coming down the pipe including a respin of the Prod5.1 FD light level systematic samples
- Freight train running smoothly but we continue to have problems with throughput at ALCF. As a result, we are still pinning files to persistent that we prestage then manually manage the transfer of files to ALCF

Timing Peak

- 5 in time candidate neutrinos



Latest Neutrino Candidate



Backup