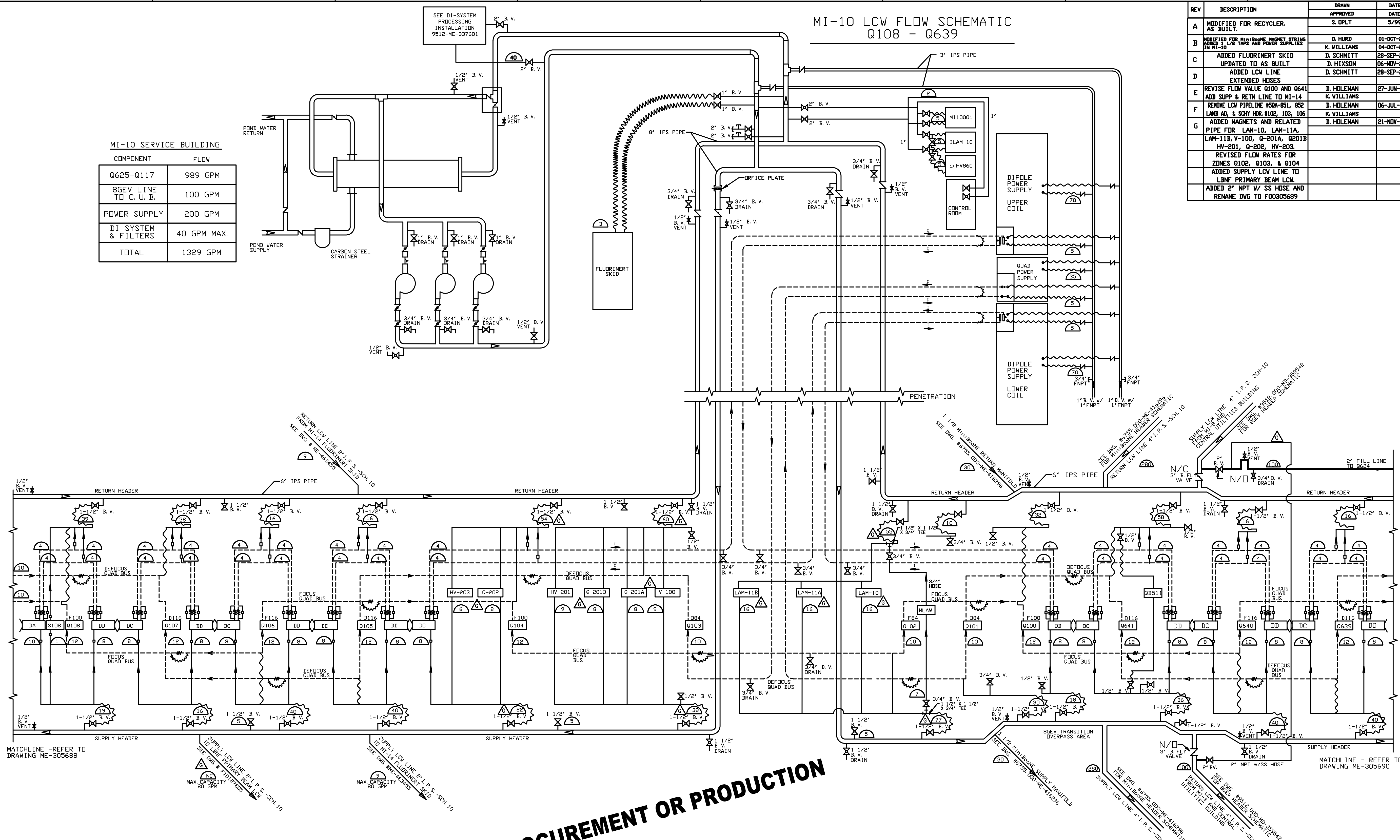


MI-10 SERVICE BUILDING

COMPONENT	FLOW
Q625-Q117	989 GPM
BGEV LINE TO C. U. B.	100 GPM
POWER SUPPLY	200 GPM
DI SYSTEM & FILTERS	40 GPM MAX.
TOTAL	1329 GPM

MI-10 LCW FLOW SCHEMATIC
Q108 - Q639

REV	DESCRIPTION	DRAWN	APPROVED	DATE
A	MODIFIED FOR RECYCLER AS BUILT.	S. DPLT		5/99
B	REVISED FOR MINI-BONE MAGNET STRING ON MI-10	D. HURD		01-OCT-2008
	ADDED 1 1/2" MAGS AND POWER SUPPLIES	K. WILLIAMS		04-DEC-2008
C	ADDED FLUORINERT SKID	D. SCHMITT		28-SEP-2011
	UPDATED TO AS BUILT	D. HIXSON		06-NOV-2011
D	ADDED LCW LINE EXTENDED HOSES	D. SCHMITT		28-SEP-2011
E	REVISE FLOW VALUE Q100 AND Q641	D. HOLEMAN		27-JUN-2022
	ADD SUPP & RETN LINE TO MI-14	K. WILLIAMS		04-DEC-2008
F	REMOVE LCW PIPELINE #50A-851, 852 LAMB AQ, & SCH HBR #102, 103, 106	K. WILLIAMS		06-JUL-2022
G	ADDED MAGNETS AND RELATED PIPE FOR LAM-10, LAM-11A, LAM-11B, V-100, Q-201A, Q201B HY-201, Q-202, HY-203. REVISED FLOW RATES FOR ZONES Q102, Q103, & Q104. ADDED SUPPLY LCW LINE TO LBNF PRIMARY BEAM LCW. ADDED 2" NPT W/ SS HOSE AND RENAME DWG TO F00305689	D. HOLEMAN		21-NOV-2022



DRAWING NOT APPROVED FOR PROCUREMENT OR PRODUCTION

SYMBOL LEGEND

LCW ONLY (SIZE)		LCW MAGNETS/DEVICES	
—	PRIMARY	DA	6m DIPOLE 'A'
- - -	SECONDARY	DB	6m DIPOLE 'B'
---	CURRENT BUS WITH LCW	DC	4m DIPOLE 'C'
~	EPDM HOSE	DD	4m DIPOLE 'D'
□	PEEK ELECTRIC INSULATOR	S###	SEXTUPOLE
◇	CURRENT ONLY CONNECTOR	CF/D###	QUAD AND CELL #
◆	PLUG - LCW	LAM	LAMBERTSON
⋈	FLEXIBLE COPPER CONNECTOR	KICK	KICKER
⊥	TAP/WELD-D-LET (SIZE) W/ CAP OR PLUG	C-MAG	C-MAGNET
⋈	QUAD BUS-LCW AND ELECTRICAL EXPANSION/ISOLATION JOINT	Q###	M. R. QUAD (SIZE)
		B2	M. R. B2 DIPOLE
		F84, D84	FOCUS OR DEFOCUS 84" QUAD
		F100, D100	FOCUS OR DEFOCUS 100" QUAD
		F116, D116	FOCUS OR DEFOCUS 116" QUAD
		VENTS	
		DRAINS	

**ISSUED FOR THE
DEC. 14, 2022
PDR**

DATE	DESCRIPTION OF CHANGES	VERSIONS BY
2/11/98	ADDED 1 1/2" DRAIN VALVES AT ALCOVES AND 3/4" BALL VALVES ON END OF RUNS IN SERVICE BUILDINGS	T. V. HAMERLA M. P. MAY KARL WILLIAMS
8/20/97	ADDED CURRENT FLOW FOR BUS. ADDED EXPANSION/ISOLATION JOINTS FOR QUAD BUS	GUNDELACH

REVISION HISTORY		
UNLESS OTHERWISE SPECIFIED	ORIGINATOR	DATE
1	J. A. SATTI	01-SEP-1995
2	B. RUSH	07-SEP-1997
3	T. HAMERLA	20-JUL-1999
4	J. A. SATTI	20-JUL-1999

SCALE	DRAWING NUMBER	SHEET	REV
NONE	F00-305689	1 OF 1	G

CREATED WITH: Ideas12NXSeries GROUP: ACCELERATOR MECH. SUPP.

FRONT