



---

Managed by Fermi Research Alliance, LLC for the U.S Department of Energy Office of Science

---

## Main Injector Operations Status

Osama Mohsen

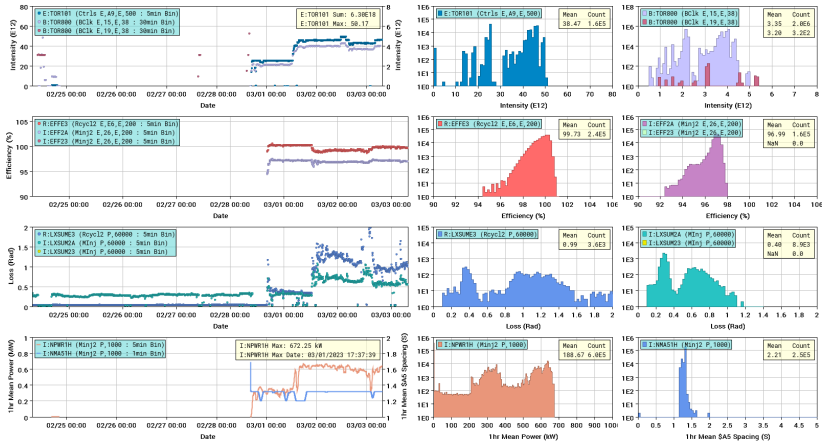
Weekly meetings

03/03/23

# NuMI Beam

Main Injector And Recycler NuMI Performance (Week)

Updated 03/03/2023 07:27:13



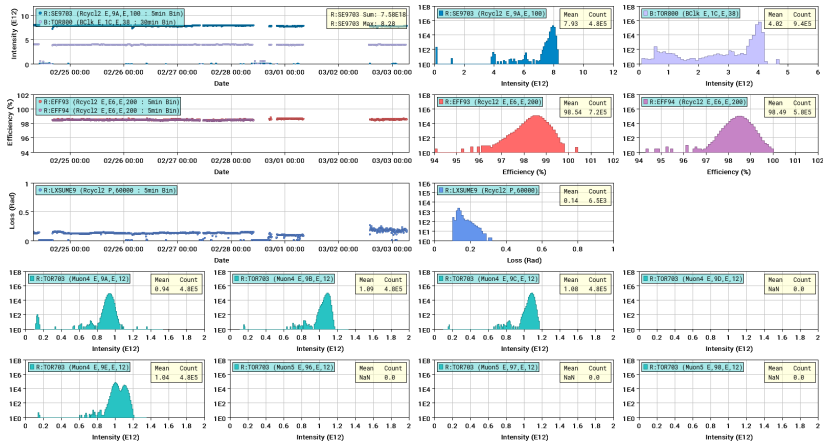
NuMI performance



# Muon Beam

Recycler Muon Performance (Week)

Updated 03/03/2023 07:27:29

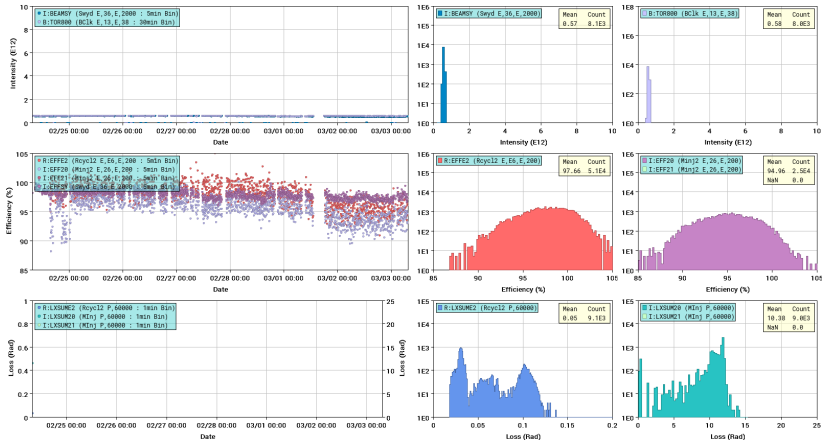


Muon Performance

# Switchyard Beam

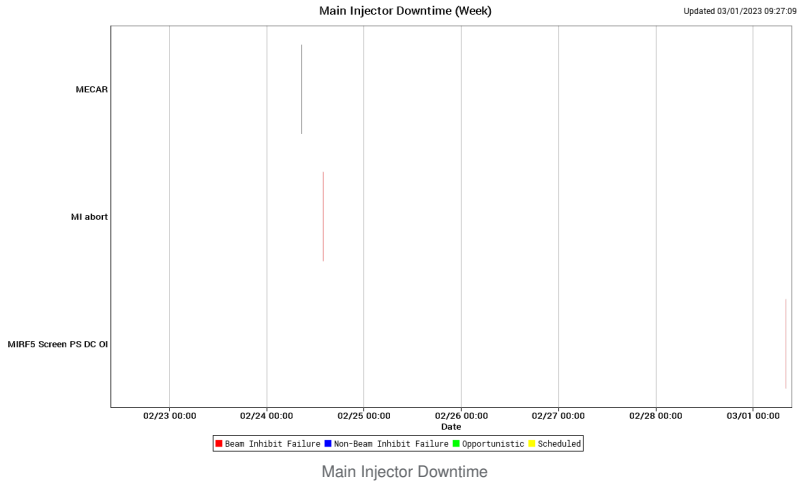
Main Injector And Recycler Switchyard Performance (Week)

Updated 03/03/2023 07:27:26

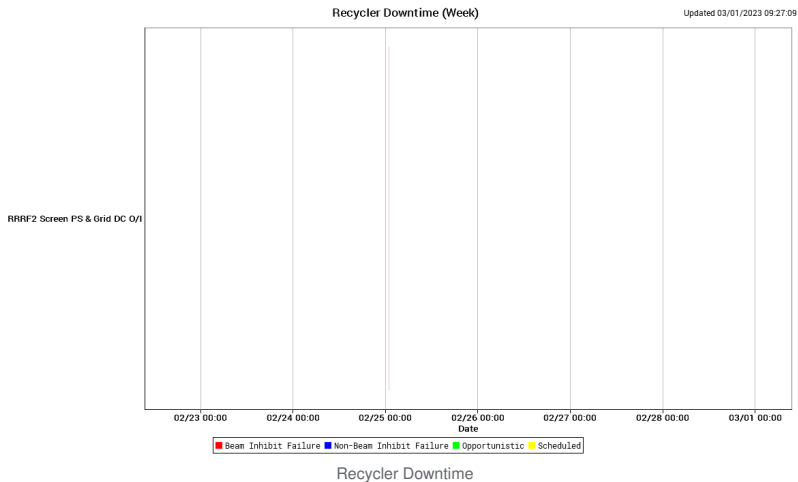


Switchyard performance

# Downtime Main Injector



# Downtime Main Recycler



## Other issues

---

- Recycler RF station 2 is doing better. RF would like to connect station 1 back and tune it so we have a spare.
- RRXDMP (Recycler Ring Transverse Damper) node is not responding. The damper is working but we cannot rephase it or reconfigure it to reduce losses.

# Requests

---

- **Studies:** \$E1 and \$E0 studies