



Managed by Fermi Research Alliance, LLC for the U.S Department of Energy Office of Science

Main Injector Operations Status

Osama Mohsen

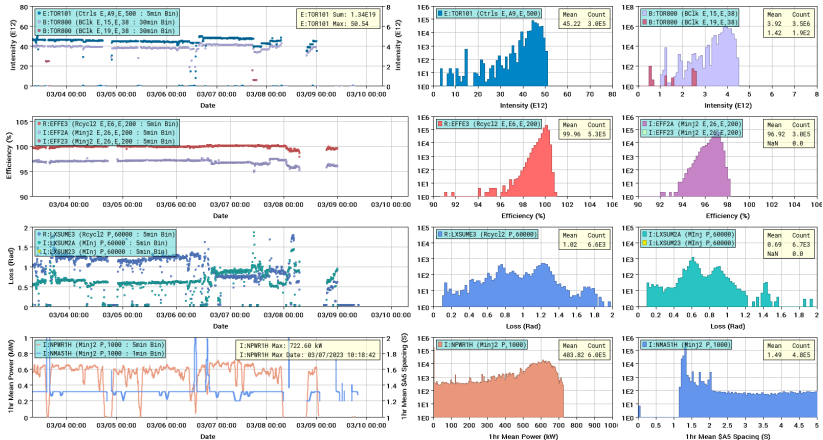
Weekly meetings

10/03/23

NuMI Beam

Main Injector And Recycler NuMI Performance (Week)

Updated 03/10/2023 07:27:14



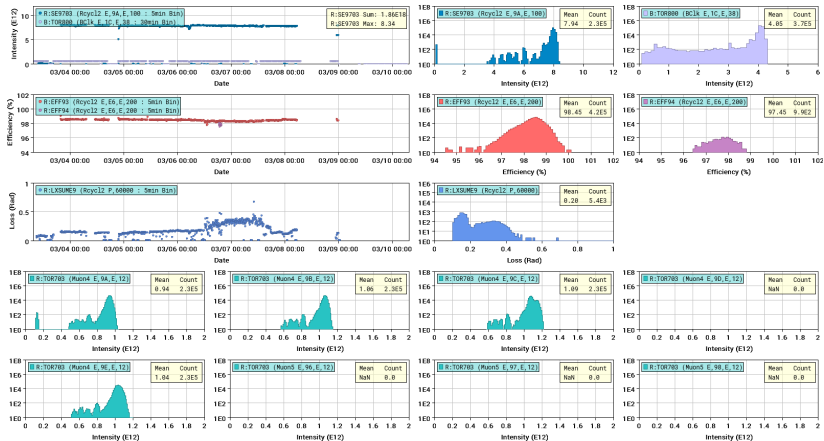
NuMI performance



Muon Beam

Recycler Muon Performance (Week)

Updated 03/10/2023 07:27:31

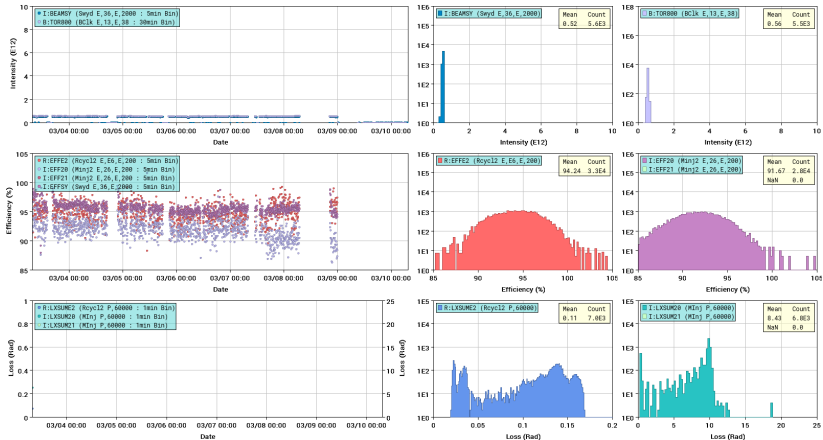


Muon Performance

Switchyard Beam

Main Injector And Recycler Switchyard Performance (Week)

Updated 03/10/2023 07:27:30



Switchyard performance

Other issues

- RRXDMP (Recycler Ring Transverse Damper) node was reset on Monday.
- We had a random spike in the losses in RR and after investigating we found that QT604 had been operating at low current and started operating normal again (Thanks to M. Wren for this).
- RF work on RR station 2 and MI station 5
- We recovered well from the power outage,. MI and RR are ready for beam

Requests

- **Studies:** \$E1 and \$E0 studies