



Managed by Fermi Research Alliance, LLC for the U.S Department of Energy Office of Science

Main Injector Operations Status

Osama Mohsen

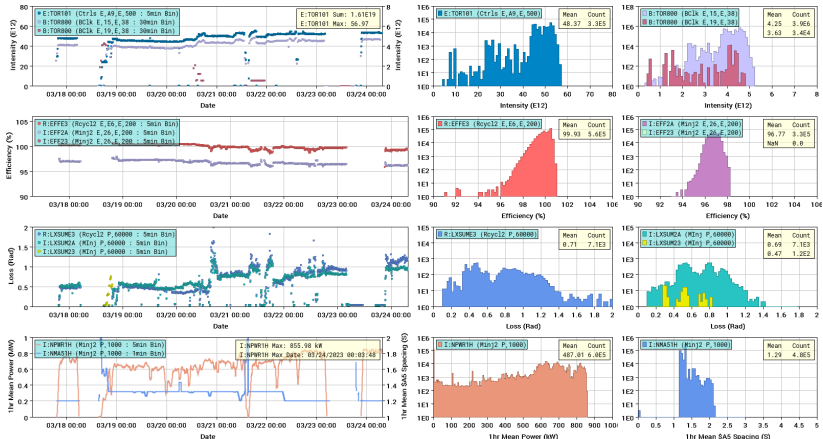
Weekly meetings

24/03/23

NuMI Beam

Main Injector And Recycler NuMI Performance (Week)

Updated 03/24/2023 07:27:21



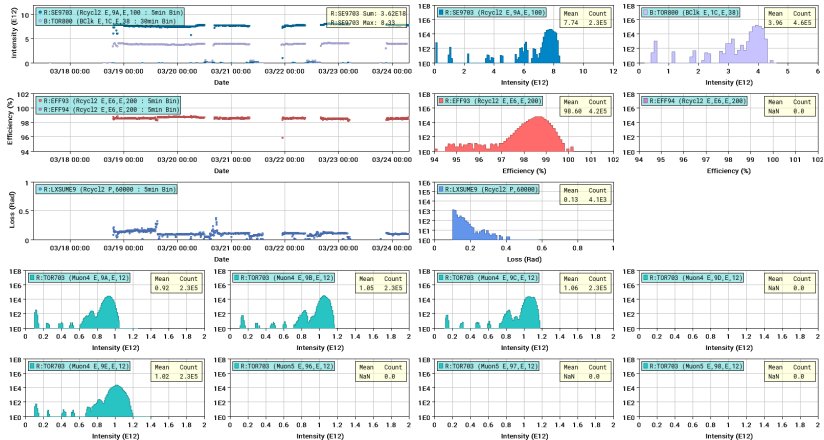
NuMI performance



Muon Beam

Recycler Muon Performance (Week)

Updated 03/24/2023 07:27:41

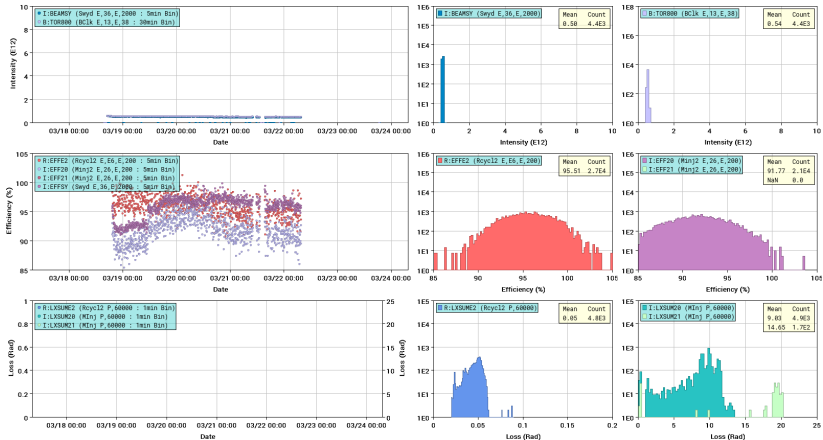


Muon Performance

Switchyard Beam

Main Injector And Recycler Switchyard Performance (Week)

Updated 03/24/2023 07:27:36



Switchyard performance

Other issues

- Continue tuning up to higher intensity.
- few instances where MI incomplete RFGE pulled the Numi permit without any station tripping off.
- On Wednesday, we had more than 850 kW hourly average to NuMi.

Requests

- **Studies:** \$E1 and \$E0 studies