



Managed by Fermi Research Alliance, LLC for the U.S Department of Energy Office of Science

Main Injector Operations Status

Osama Mohsen

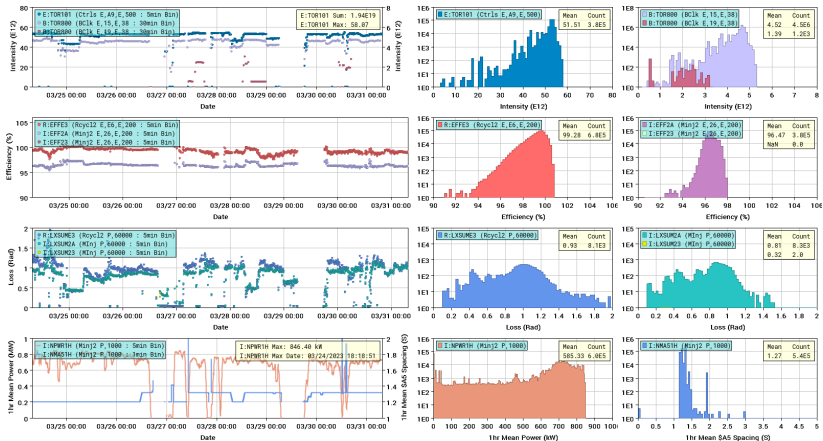
Weekly meetings

31/03/23

NuMI Beam

Main Injector And Recycler NuMI Performance (Week)

Updated 03/31/2023 07:27:37

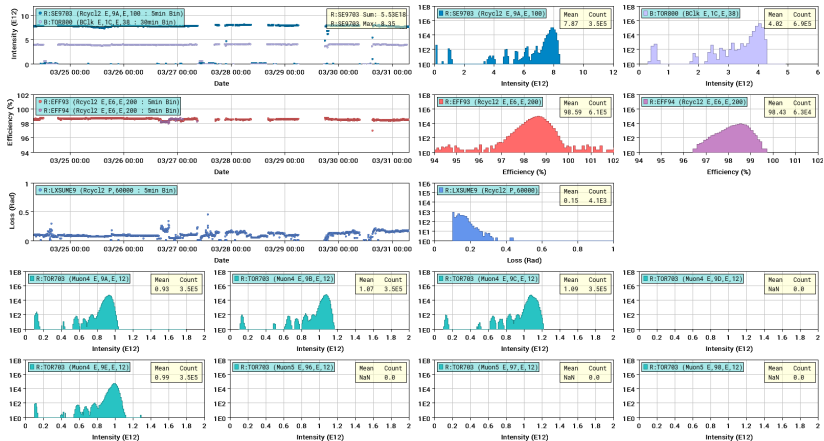


NuMI performance

Muon Beam

Recycler Muon Performance (Week)

Updated 03/31/2023 07:28:32



Muon Performance

Other issues

- We keep tuning to higher intensity.
- During access day, RF changed PAs on stations 13, 5 and modulator tube on station 1. FESS completed their float installation.
- Coming up we had a lot of issues in the MI RF both 5 and 13.
- On Thursday, we had one hour of downtime to look into it. RF techs got station 5 back but station 13 will require access. We are currently bypassing it.
- M. Murphy will be MC for April, starting Saturday.

Requests

- **Studies:** \$E1 and \$E0 studies