

# New Trigger Studies for Emerging Jets at CMS Experiment

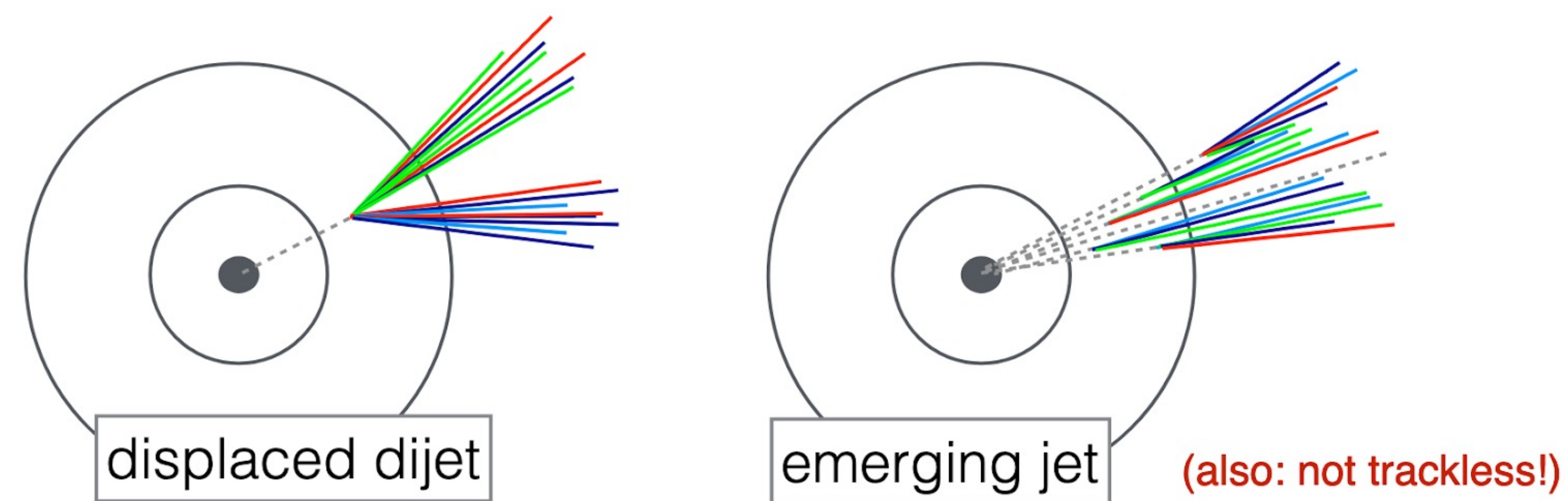
Guillermo A. Fidalgo Rodríguez, University of Puerto Rico at Mayagüez

FERMILAB-POSTER-23-100-CMS

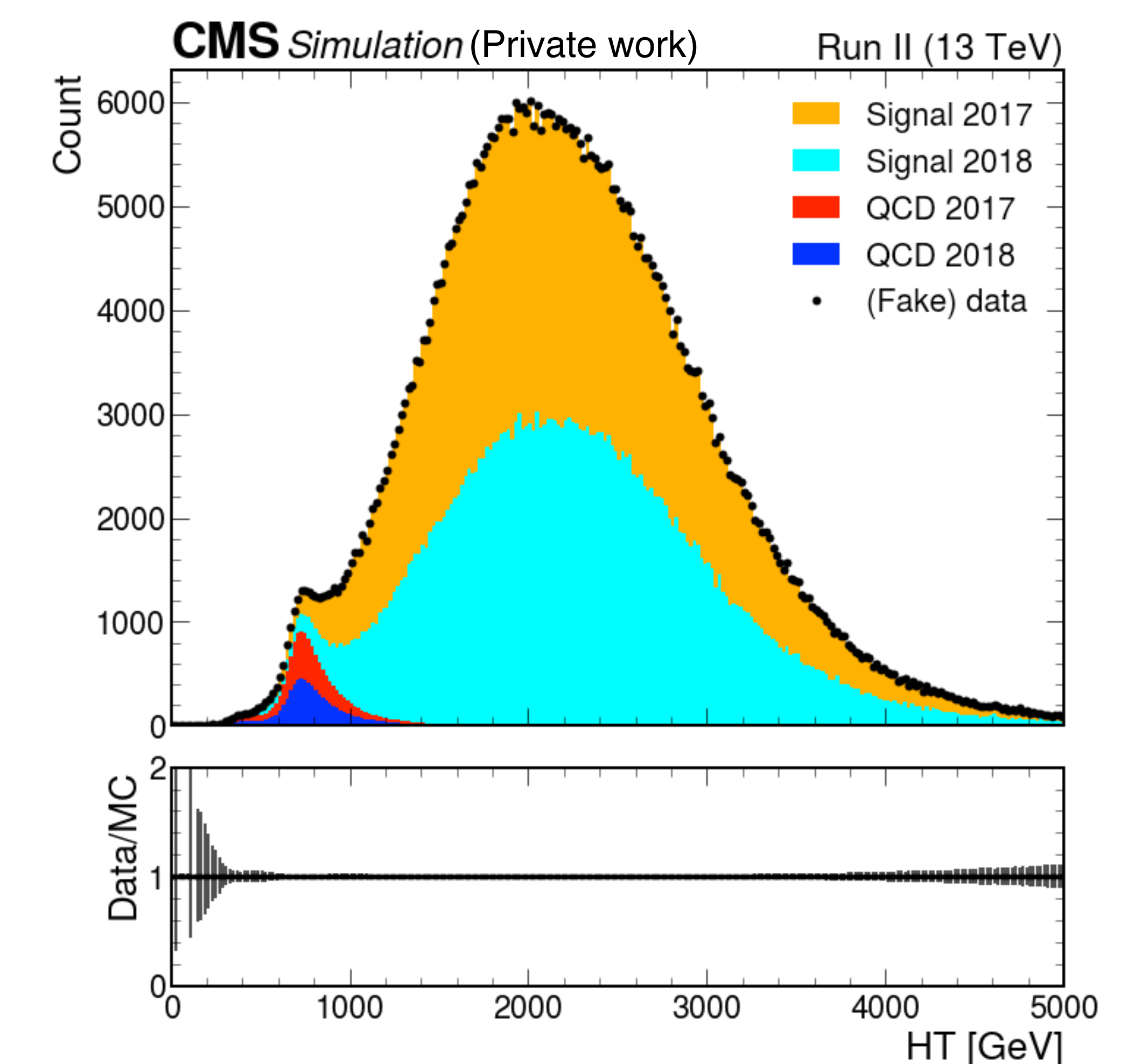
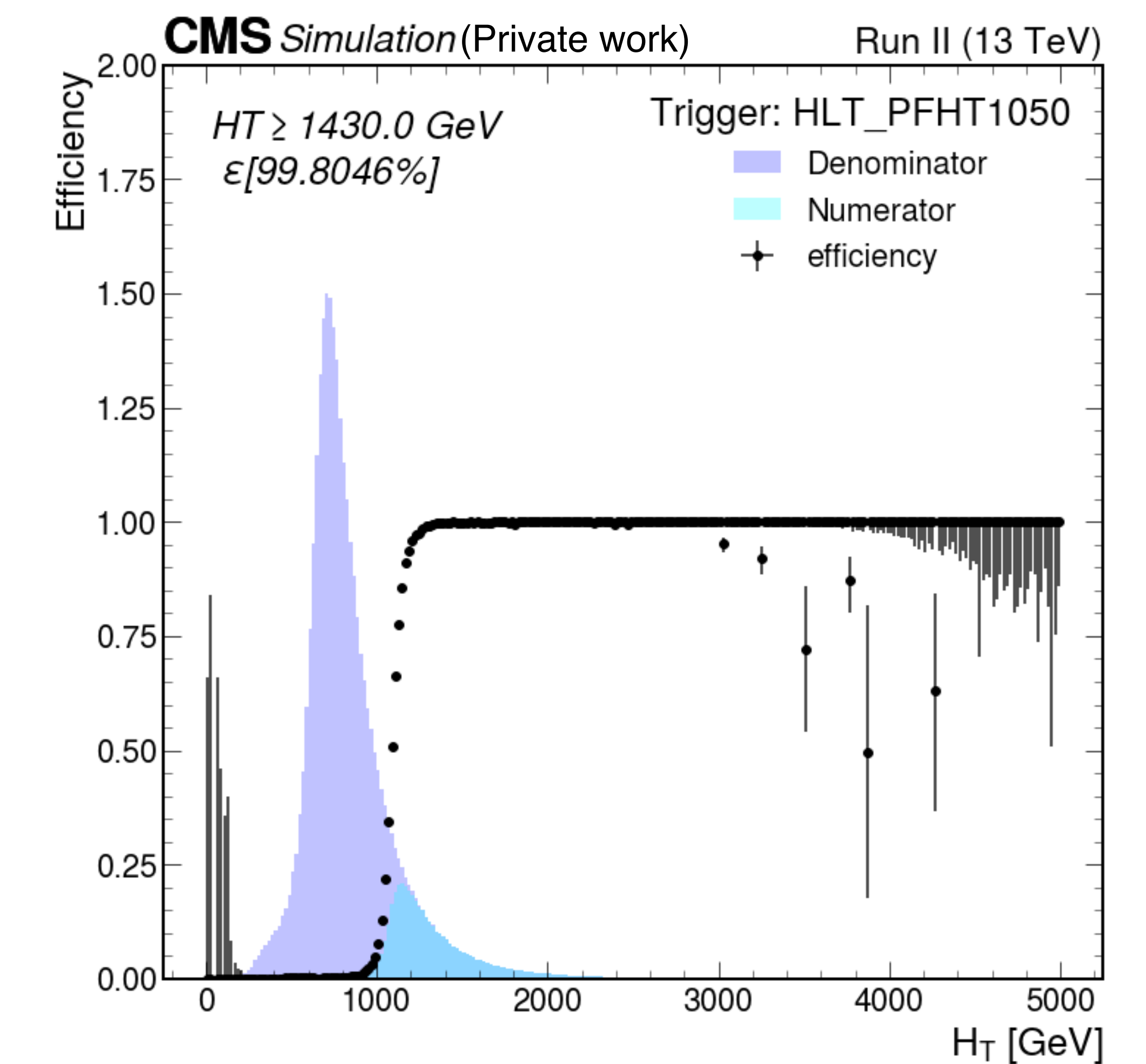
## Introduction

- A Trigger is something that "triggers" the data taking process, like a condition that is met in order to take a picture of particles that are coming out of a high energy proton-proton collision.
- I work on a software-based trigger called the "high-level trigger" (HLT).
- We want to search for evidence of dark matter produced at the LHC. We search these by looking at showers of particles, specifically jets that are very different from the Standard Model jets. These jets contain many displaced vertices, and we call them emerging jets (EMJs).
- EMJs are produced as dark analogs to SM jets. The EMJ signature is unique and can predict new physics that other models cannot. A new HLT can potentially improve these searches.

Extending the CMS trigger menu so that it includes emerging jets, to complement its existing displaced jet triggers

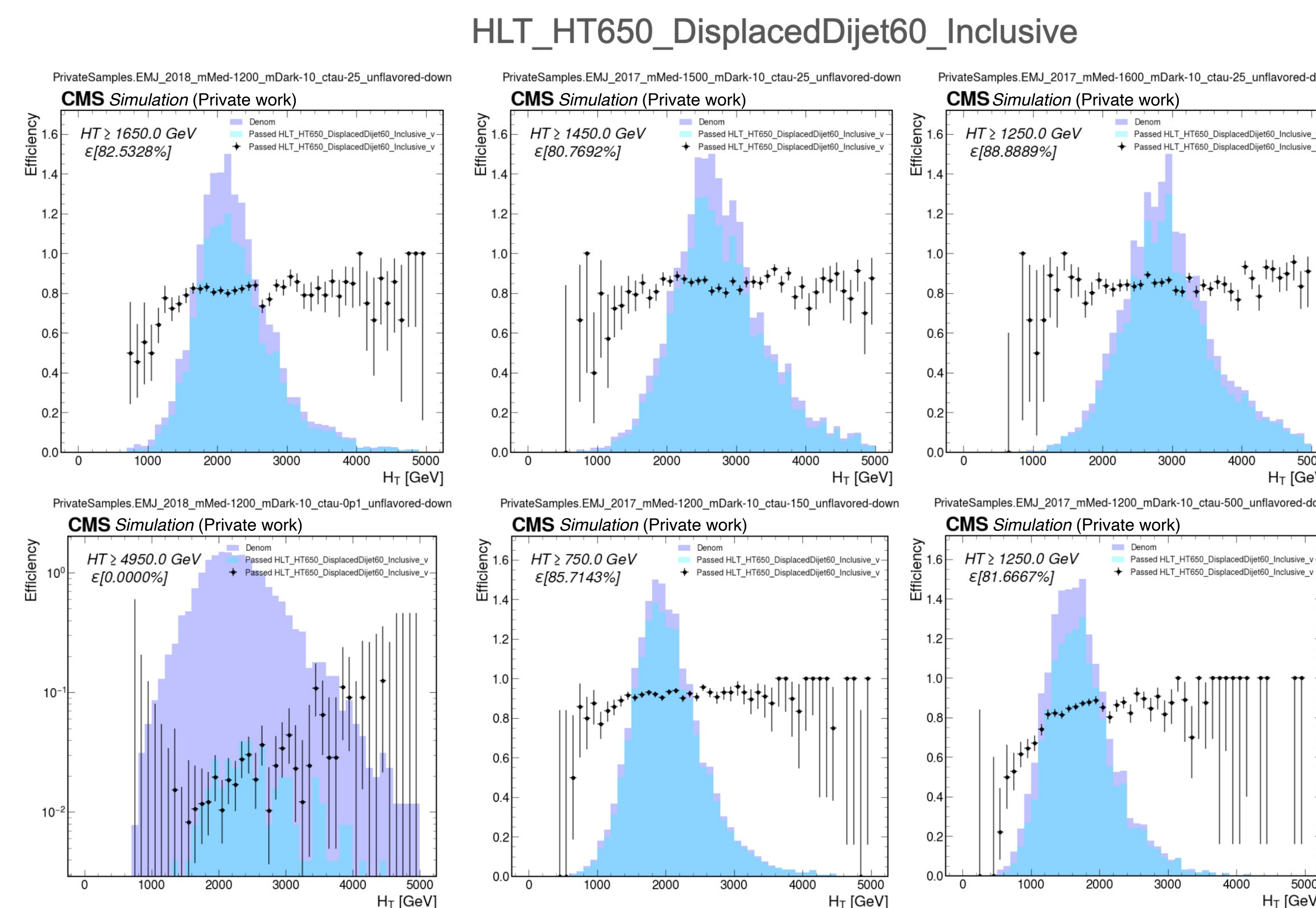
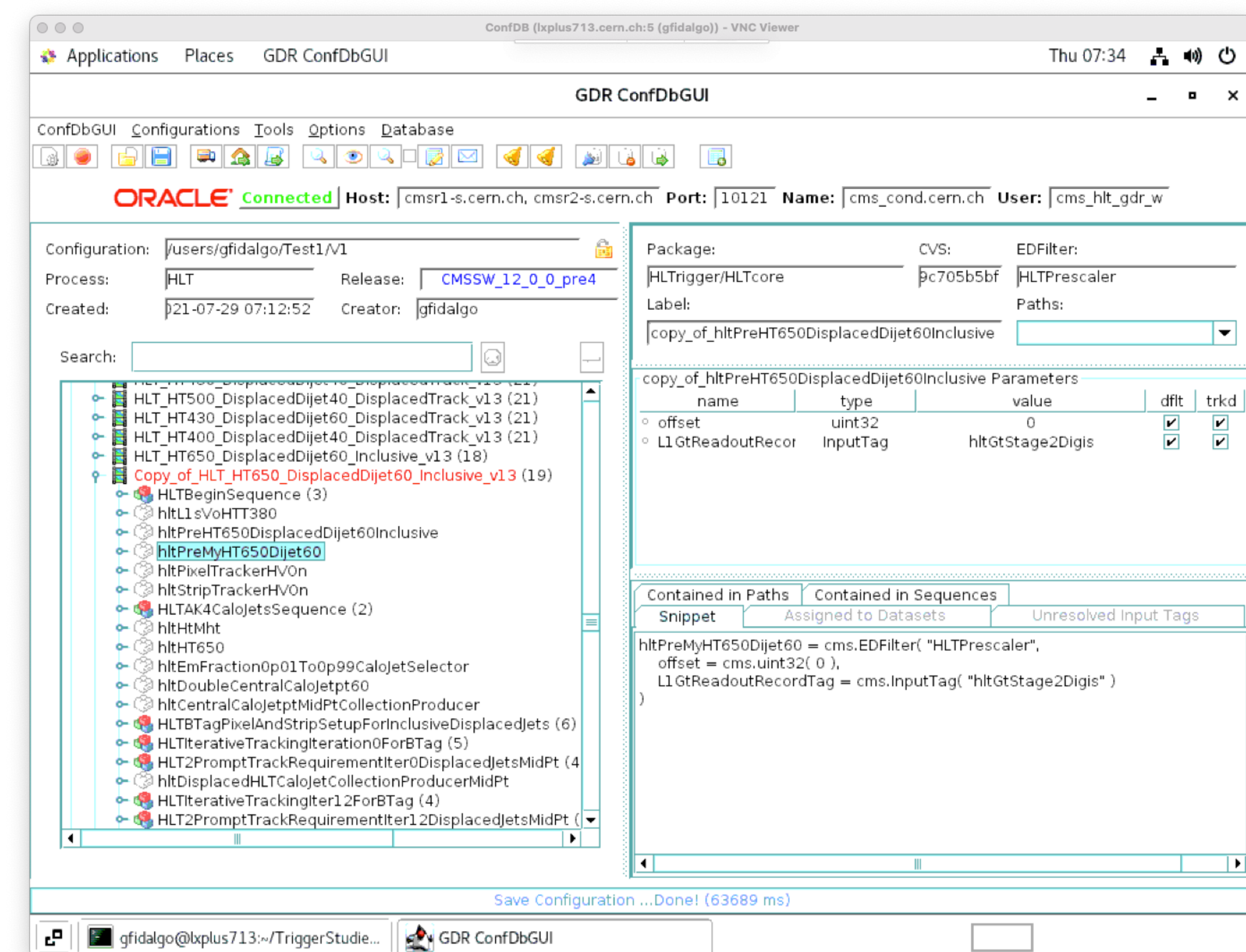


We can measure the efficiencies of many other displaced jet triggers. We think these might be a good starting point to create our new EMJ trigger.



## Creating a new HLT

How to create a new Trigger? : We use a java application called ConfDB that runs on the CERN network. This is neat alternative to editing a python file with over 10k lines of code.



The phase space we are looking at is filled with background. Hence, we need dedicated triggers to help sort through it efficiently.

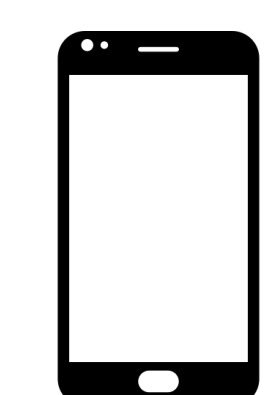
This is a work in progress.

## Acknowledgments

- Thanks to NSF for awards 1806759 and 2111134.
- University of Colorado Boulder Pathways Program

## References

- <https://arxiv.org/abs/1502.05409>
- <https://arxiv.org/abs/1803.08080>



Take a picture and find out more about me.



This work was produced by Fermi Research Alliance, LLC under Contract No. DE-AC02-07CH11359 with the U.S. Department of Energy. Publisher acknowledges the U.S. Government license to provide public access under the DOE Public Access Plan DOE Public Access Plan