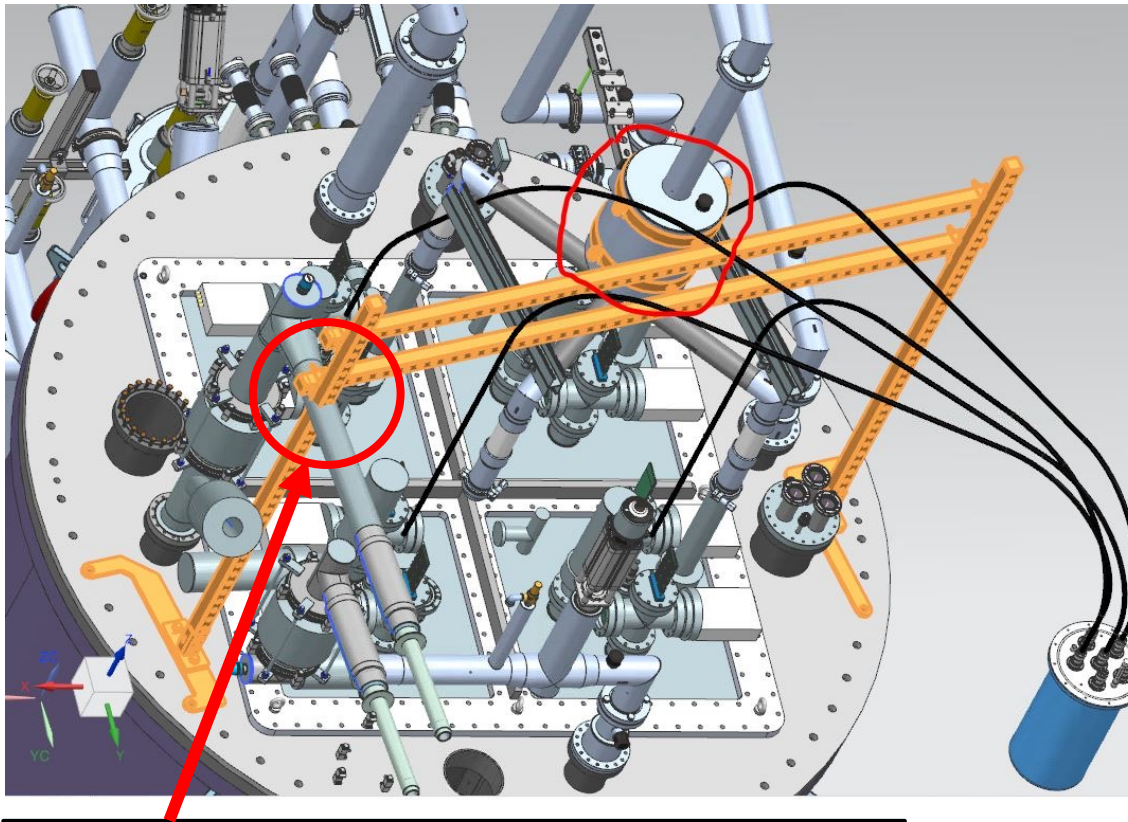


ArgonCube 2x2 Installation Planning

ArgonCube 2x2 Installation Meeting on May 15, 2023

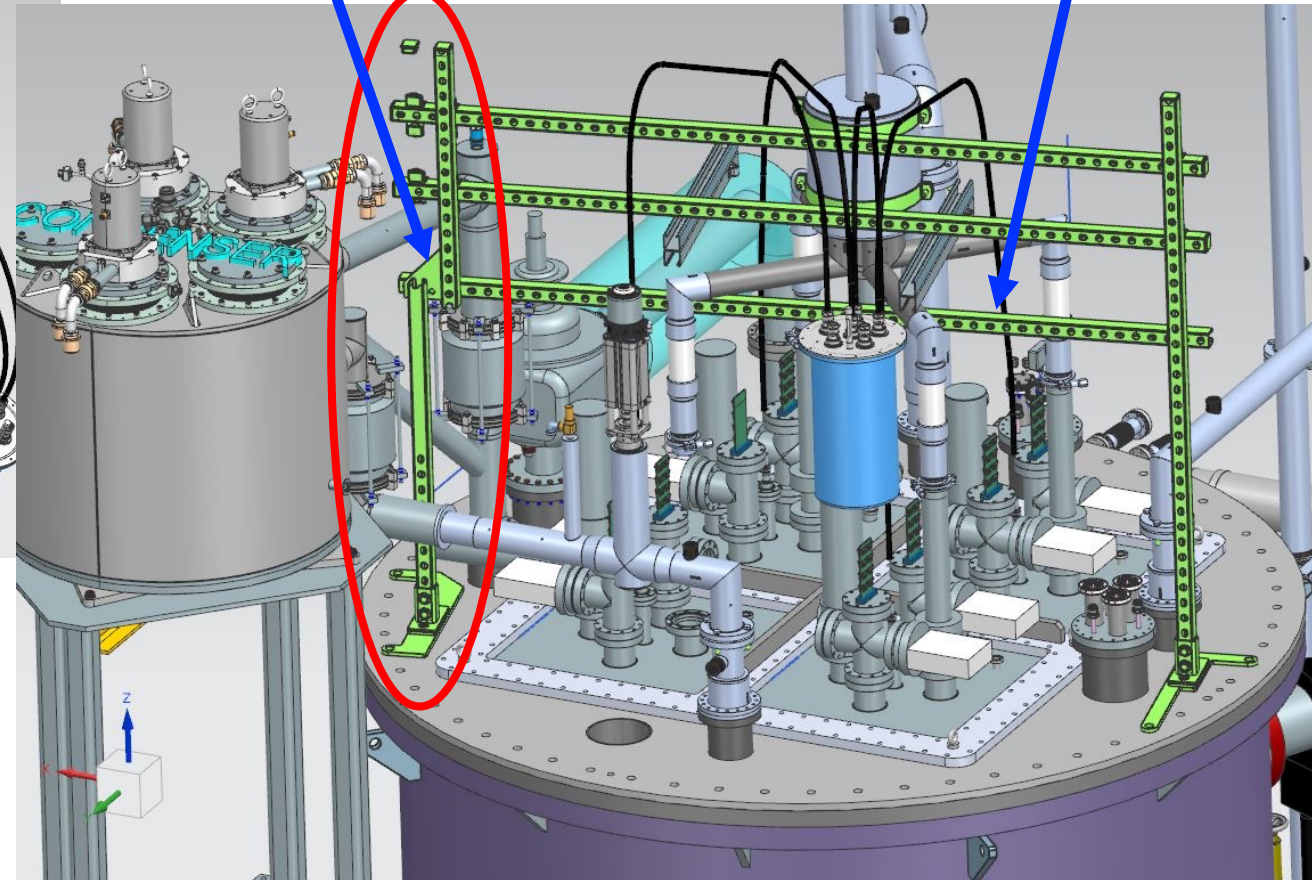
Min Jeong Kim*, Gary Smith

Interference on the top of cryostat



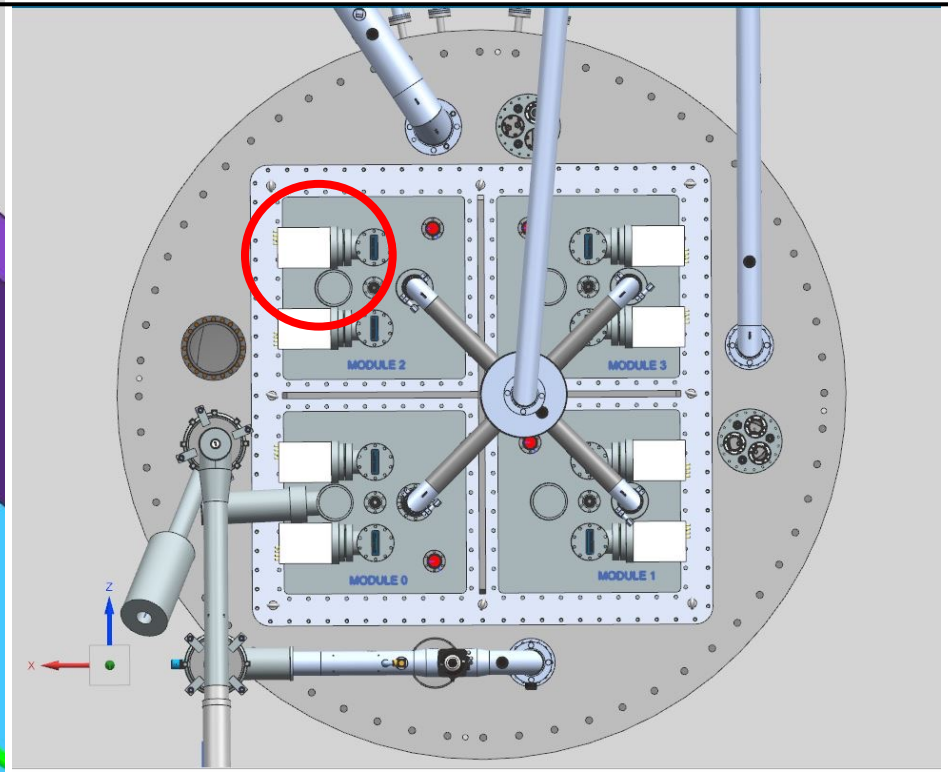
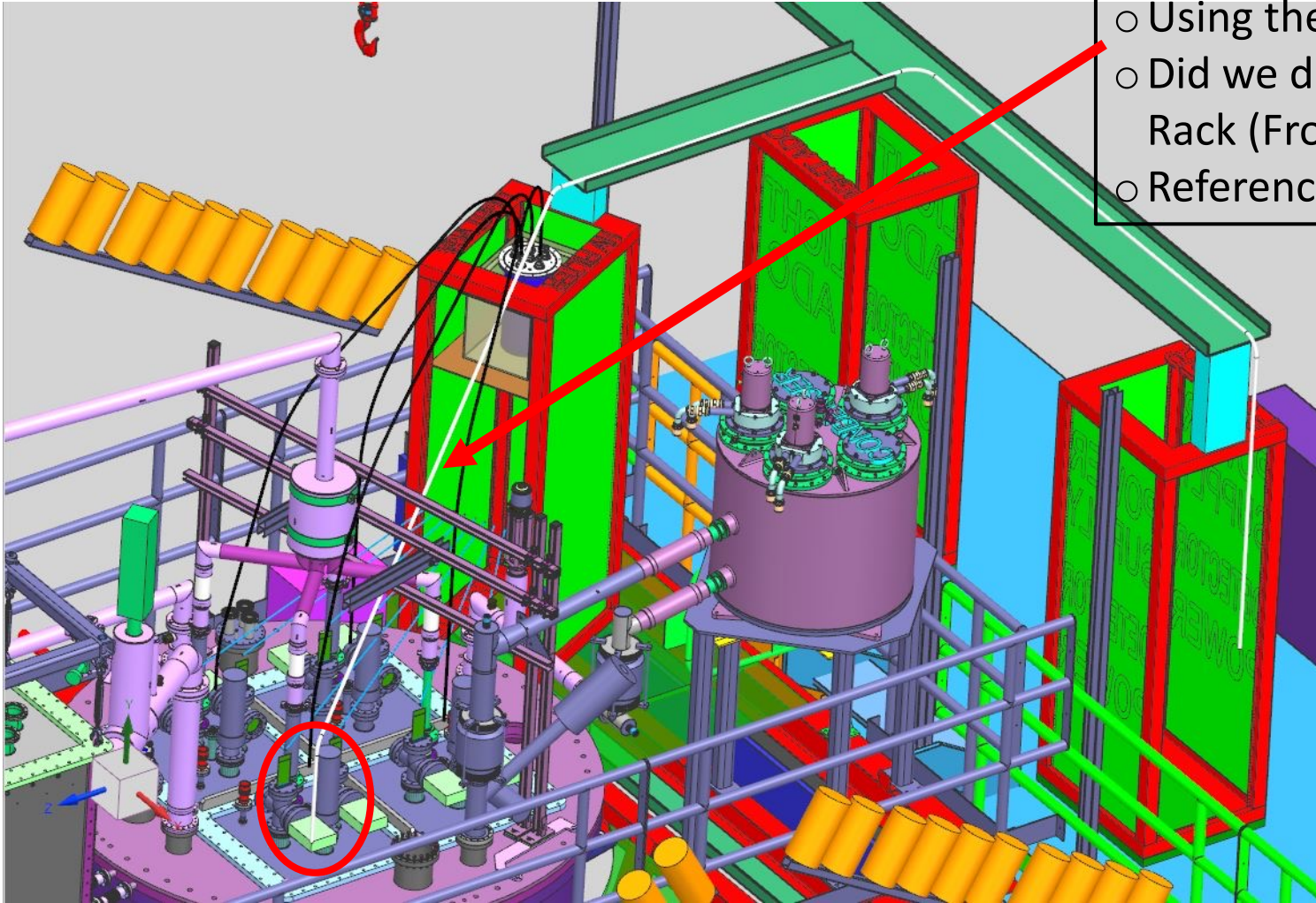
Interference between GAR return to the condenser and the Unistrut support for LAr distribution header

Cut an existing column and shift the upper piece; add a bracket & extra horizontal brace (its height can be adjusted to be useful for cable support as well!)

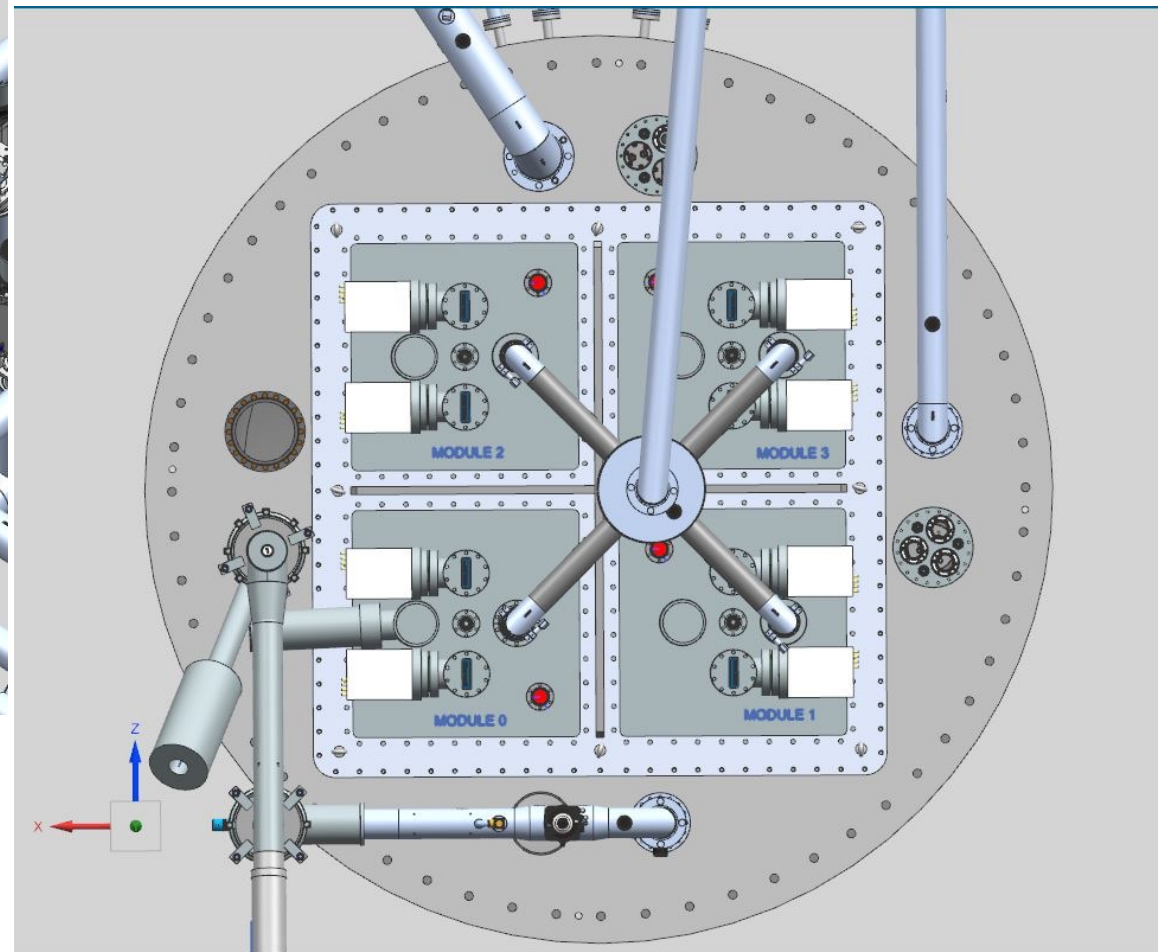
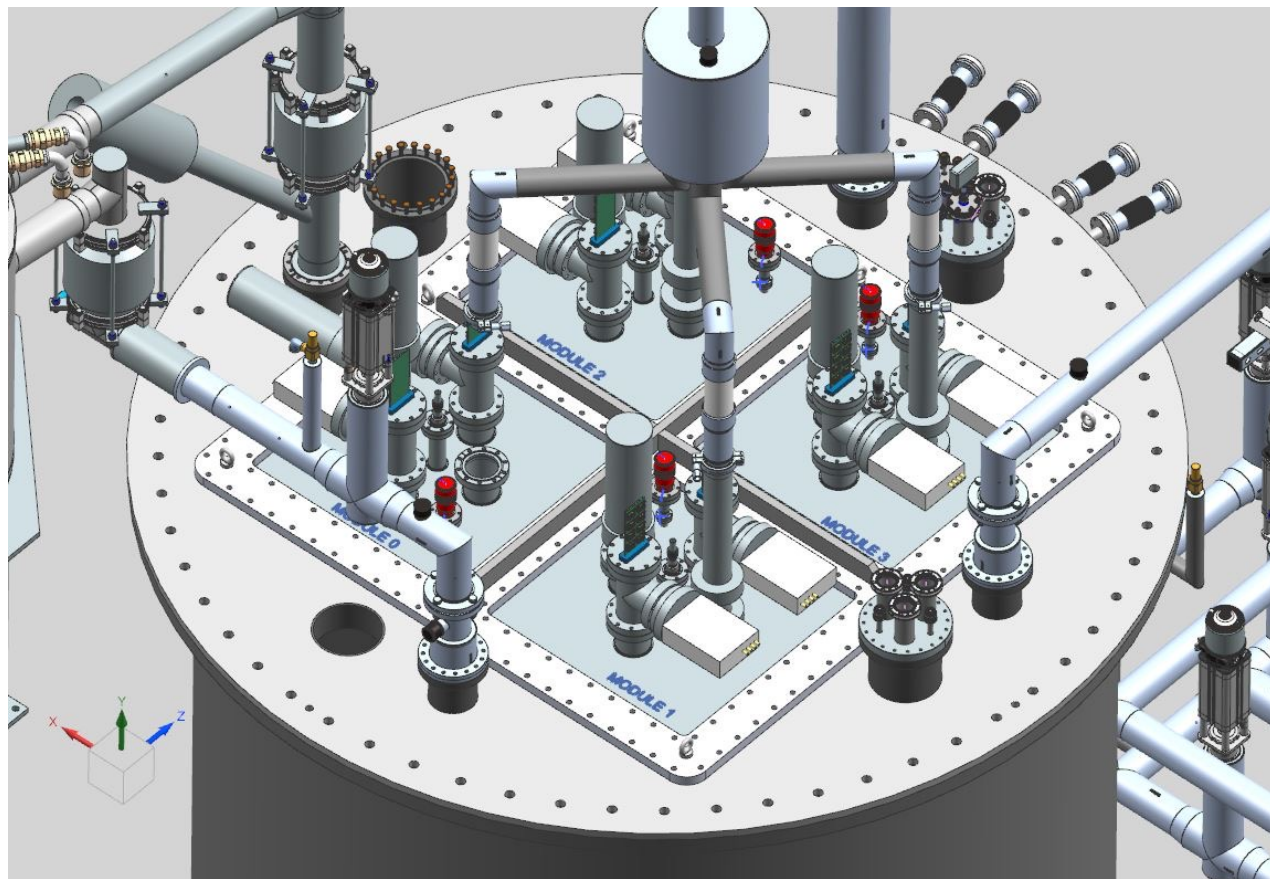


MPOD DC Power Cable Length Estimate for Charge/Instrumentation Readout

- Using the longest path (white solid line), it's about 30'.
- Did we determine the orientation of Power Supply Rack (Front/Back)?
- Reference: [DUNE-doc-23244](#)



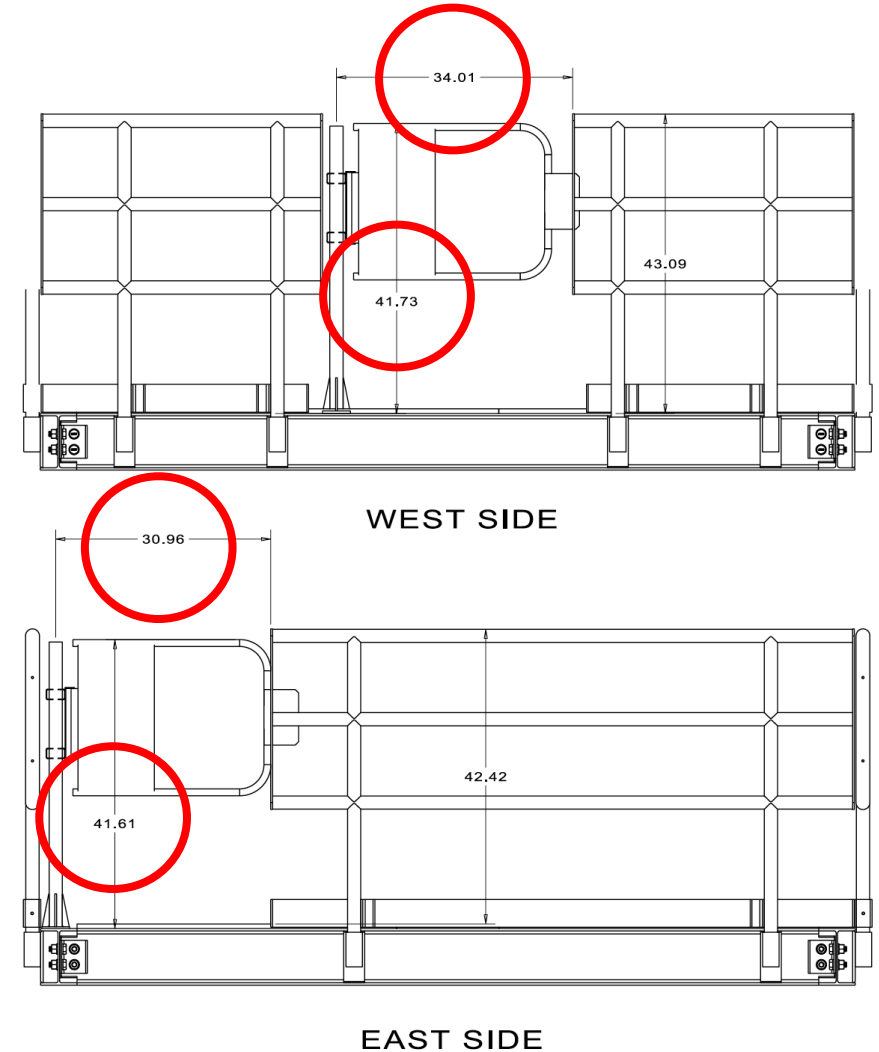
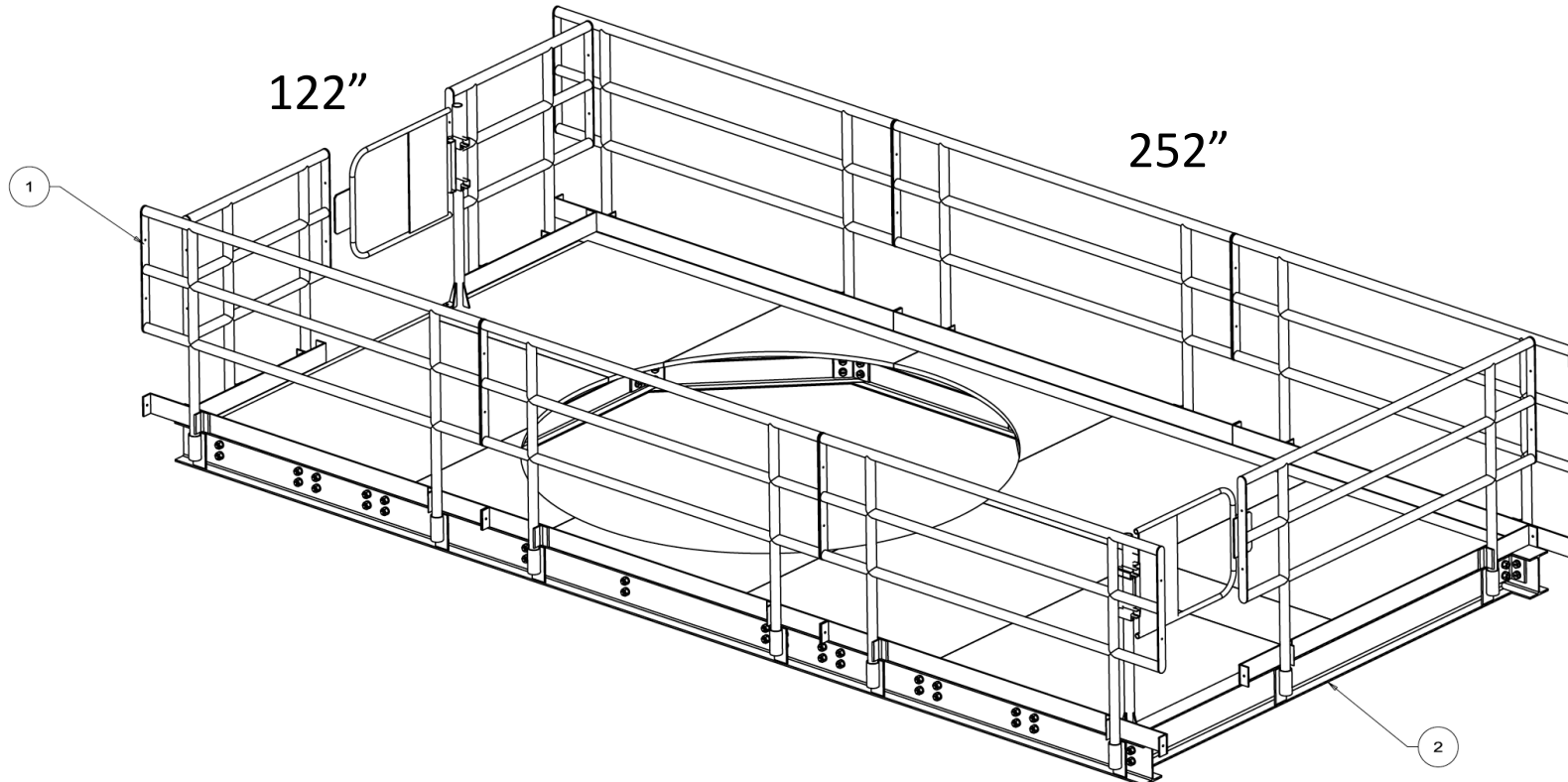
Preferred Module Layout



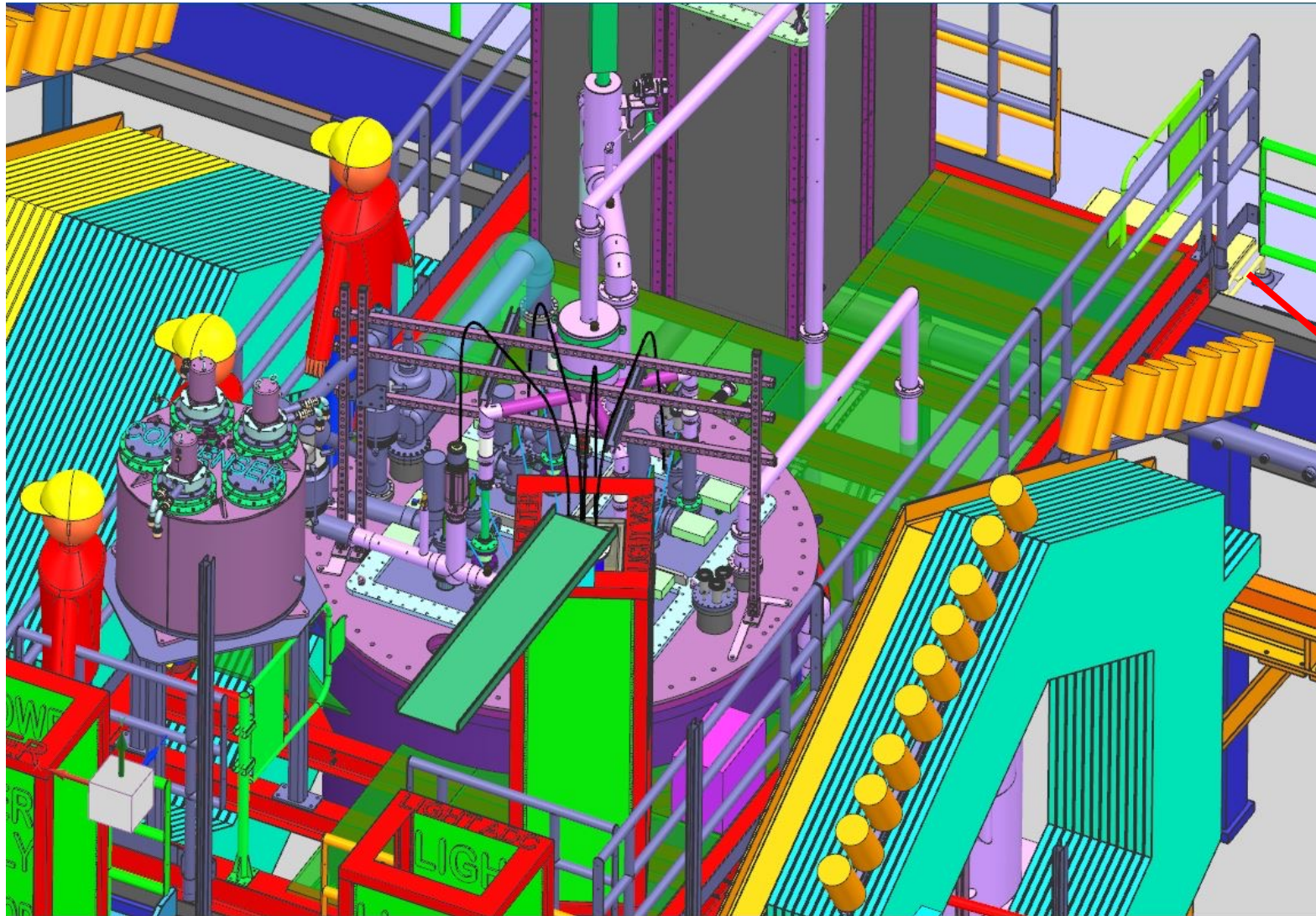
Cryostat Access Platform Details (Handrails, Gates, Step)

Rules associated with gates:

- Inward (towards the access platform) swing opening gates
- Gate width: 28" (OSHA), 22" (NFPA Life Safety Code)
- Height of gate top rail: 42 ± 3 "

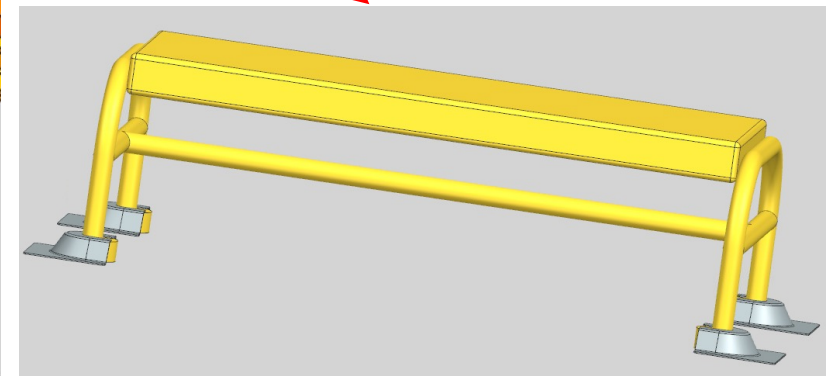


Cryostat Access Platform Details (Handrails, Gates, Step)



This screenshot shows

- inward swing opening gates open
- a step stool permanently attached to the test stand (on catwalk) for the East gate



Cryostat Access Platform Details (Handrails, Gates, Step)

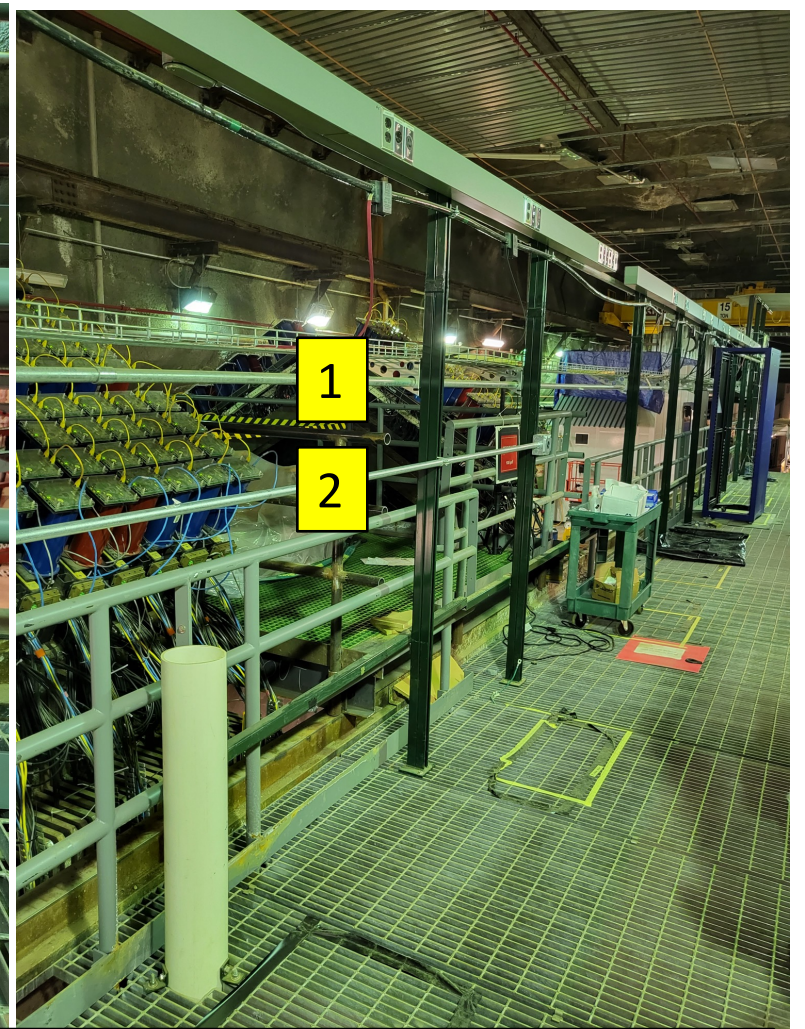
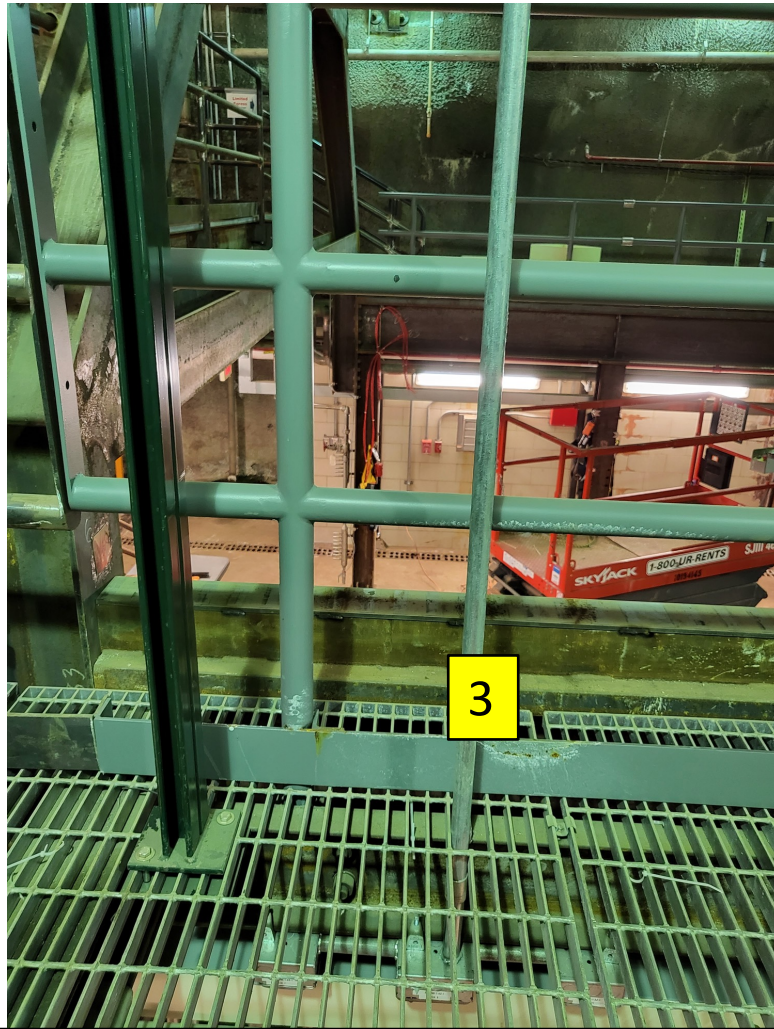
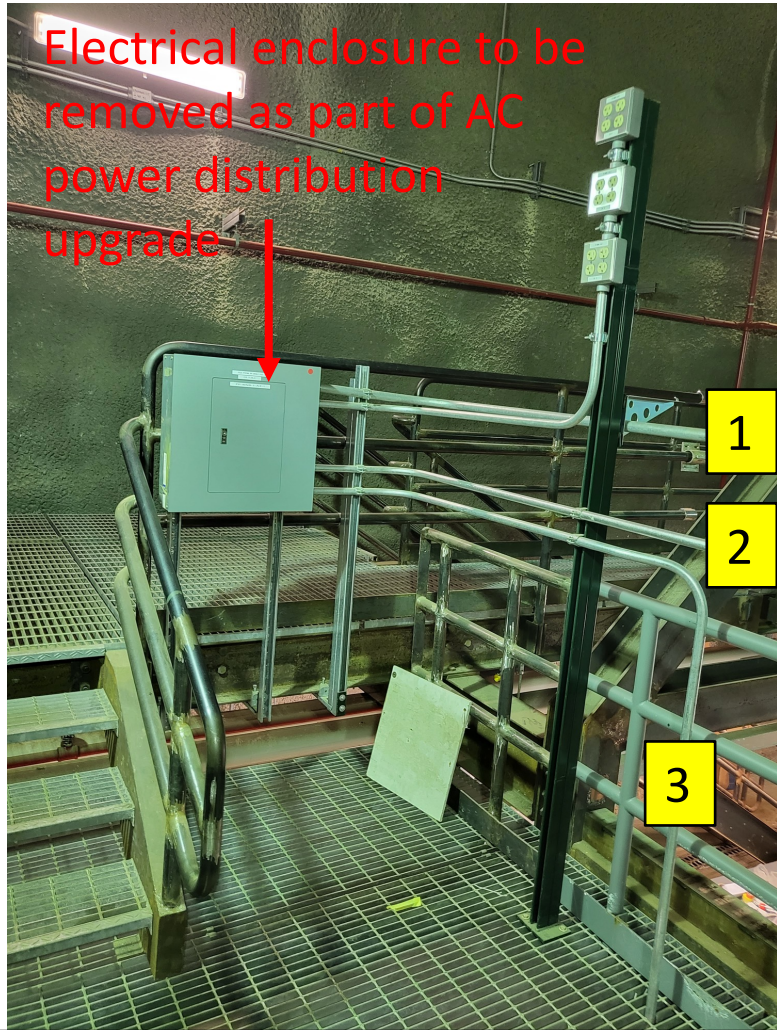


Is there any important reason that we should cut this out?

Do we want to add some piping caps for sharp edges?

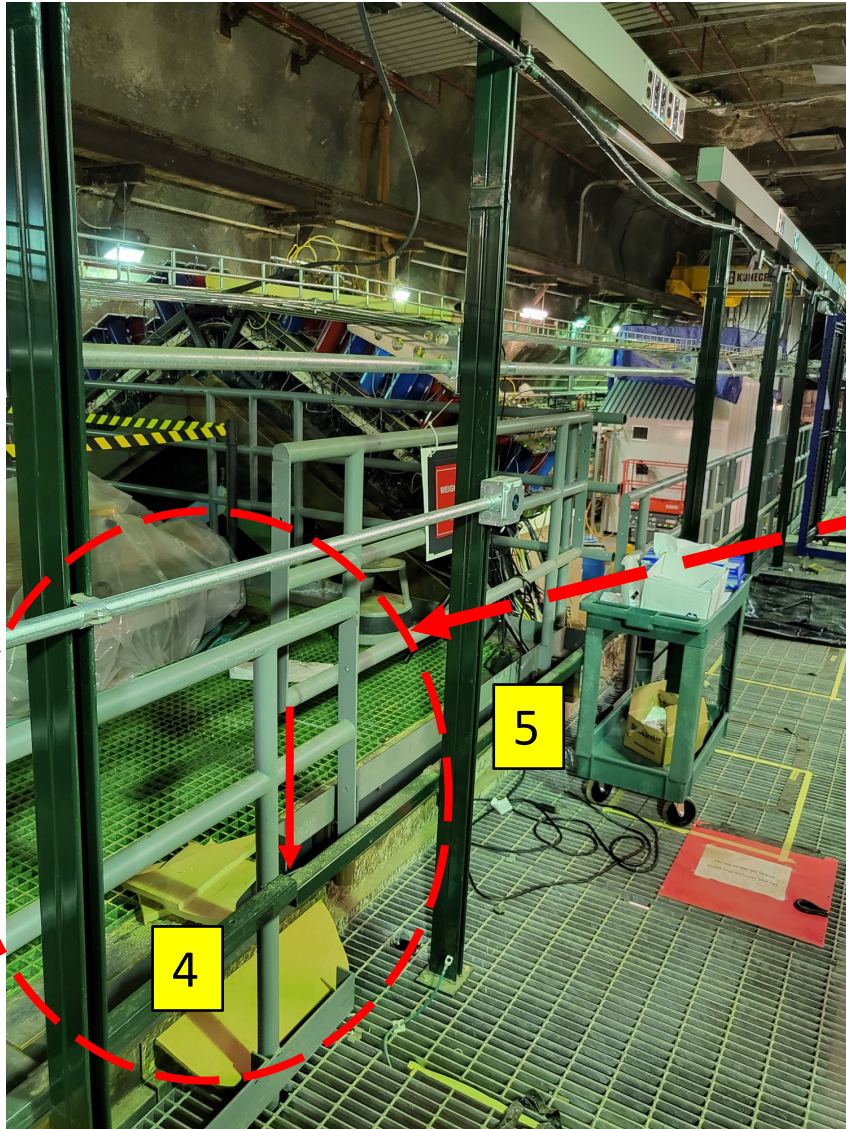


West Catwalk Cleanup for Safe Traffic



The conduits 1,2 and 3 can't be removed until AC power distribution work as per Matt Micheli!

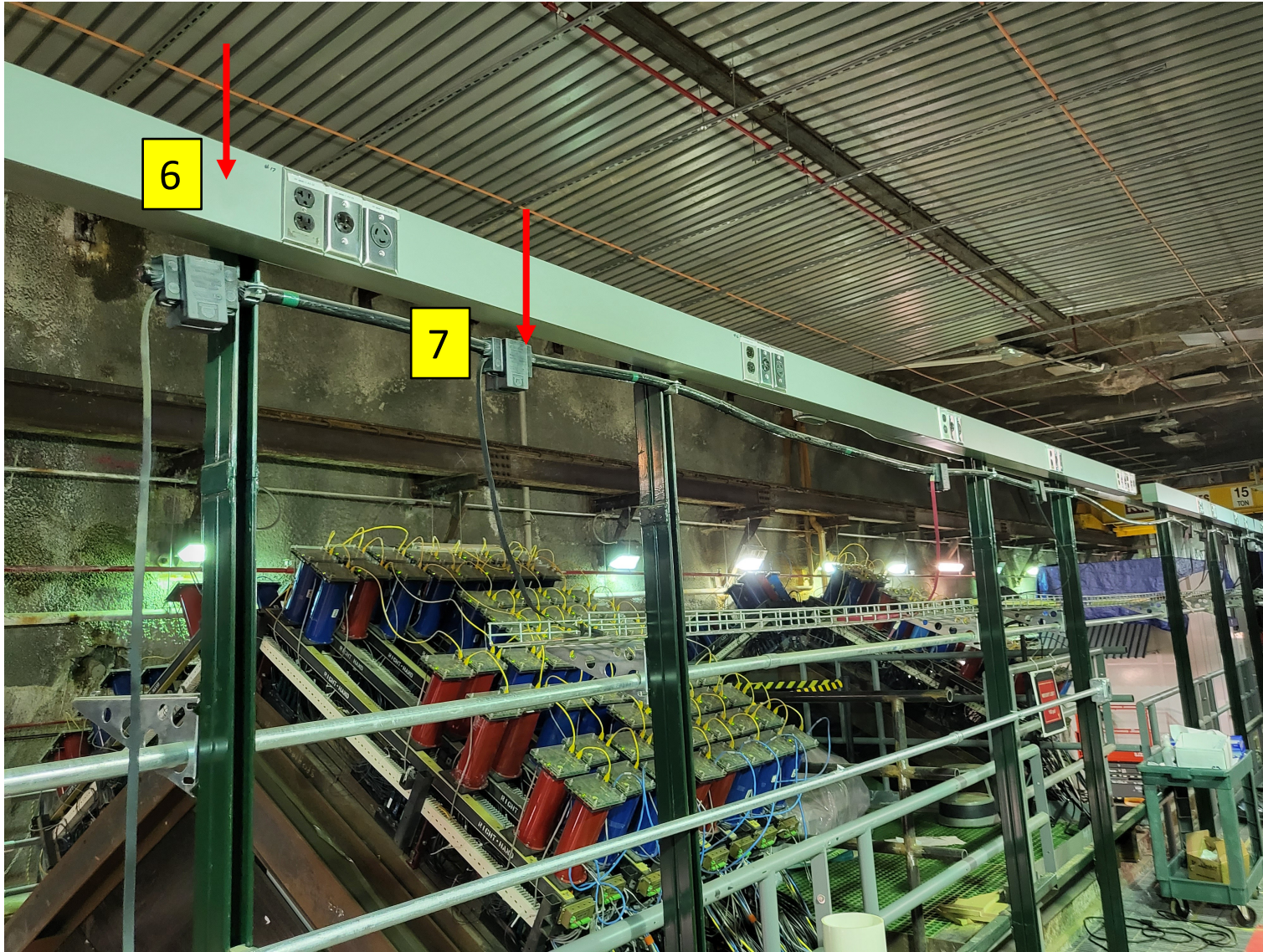
West Catwalk Cleanup for Safe Traffic (continued)



The Unistruts 4 and 5 can be arranged to be removed.

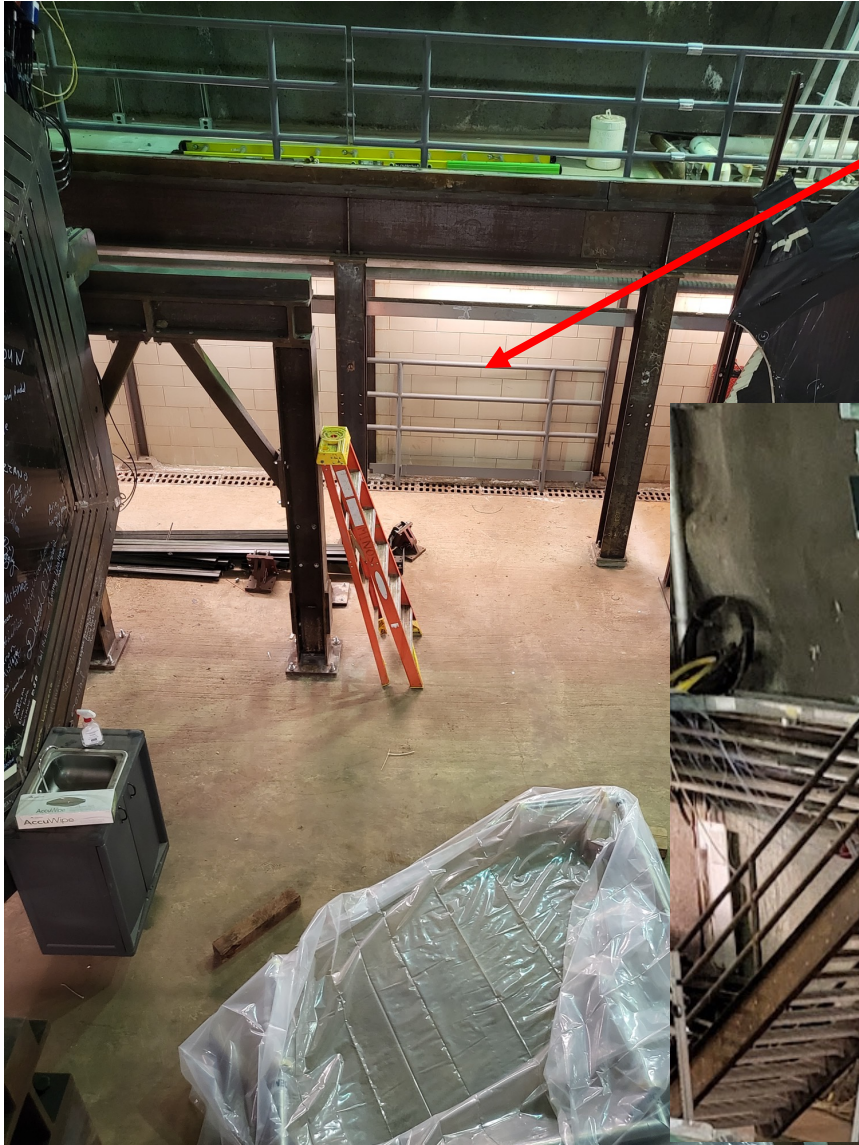
Delaying decision to remove until we decide how to extend the floor in order to support a MINERvA detector electronics maintenance.

West Catwalk Cleanup for Safe Traffic (continued)

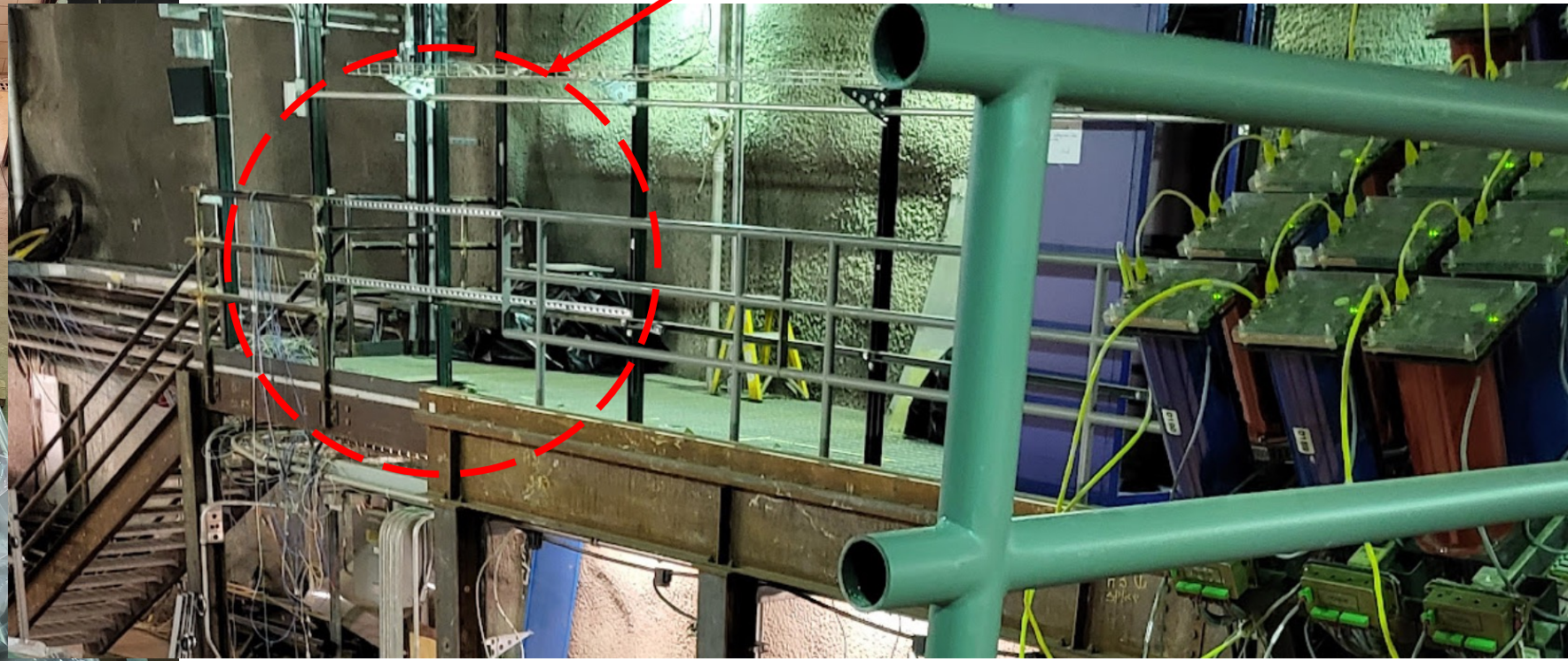


Wireway 6 and 7 will stay. We need them as per Matt Micheli.

West Catwalk Cleanup for Safe Traffic (continued)



Question to Steve: Is this reserved for something?



Water leak on the East Catwalk

