

ACCELERATOR DIVISION DEPARTMENTAL PROCEDURE

ACCELERATION OPERATIONS DEPARTMENT

ADDP-OP-0008

FOOTPRINT AREA FIRE FIELD EMERGENCY RESPONSE

PREPARED BY Joe Compton DATE 11/10/2021
Joe Compton
AD Operations Department

APPROVED BY Todd Sullivan DATE 11/15/2021
Todd Sullivan
AD Operations Department Head

REVISION NO 1 REVISION ISSUE DATE 11/10/2021

CONTROLLED DOCUMENT

Users are responsible for ensuring they are working to the latest approved revision. Printed or electronically transmitted copies are uncontrolled.

REVIEW AND CONCURRENCE RECORD

REVIEWED BY  DATE 11/18/21
Eric Schlatter
ES&H Section AD Division Safety Officer

REVIEWED BY  DATE 11/18/21
Matt Quinn
ES&H Section Senior Radiation Safety Officer

CONTROLLED DOCUMENT

Users are responsible for ensuring they are working to the latest approved revision. Printed or electronically transmitted copies are uncontrolled.

Author	Description of Change	Revision Date
Joe Compton	Updated to required procedure format. Added flow chart as Attachment 1.	11/10/21

CONTROLLED DOCUMENT

Users are responsible for ensuring they are working to the latest approved revision. Printed or electronically transmitted copies are uncontrolled.

1.0 PURPOSE AND SCOPE1

2.0 RESPONSIBILITIES1

3.0 INSTRUCTIONS1

4.0 DISTRIBUTION2

ATTACHMENT 1: FIRE EMERGENCY RESPONSE PROCEDURE – FIELD (FOOTPRINT AREA)1

ATTACHMENT 2: FOOTPRINT AREA FIRE PROTECTION ZONES1

CONTROLLED DOCUMENT

Users are responsible for ensuring they are working to the latest approved revision. Printed or electronically transmitted copies are uncontrolled.

1.0 PURPOSE AND SCOPE

The purpose of this Accelerator Division Departmental Procedure (ADDP) is to establish and define Fermilab Accelerator Division Operations Department Main Control Room (MCR) field response to a report of fire in the accelerator footprint area. (MCR and surrounding areas including: X-Gallery, Linac Gallery, Booster Galleries & Transfer Gallery). Refer to Attachment 2: Footprint Area Fire Protection Zone.

2.0 RESPONSIBILITIES

- 2.1 Crew chief or designee shall initiate response by following included instructions.
- 2.2 The MCR field team shall follow the included instructions.

DEFINITIONS

- 3.0 The Footprint Area Fire Protection Zone for the Cross Gallery (also known as X-Gallery) is defined in Attachment 2: Footprint Area Fire Protection Zone.

4.0 INSTRUCTIONS

- 4.1 Fire in the Footprint area not involving the Cross Gallery (X-Gallery) area.
 - 4.1.1 During an active fire alarm or a report of fire/smoke, the Crew Chief or designee shall ensure that emergency dispatch has been notified (which may require calling x3131).
 - 4.1.2 The Crew Chief or designee shall designate a field team of operators to respond to the Footprint area with a radio.

Note: The field team shall not place themselves in danger. If it cannot be determined if there is smoke or fire present, the field team shall wait for the Fermilab Fire Department (FFD) to arrive and report to the Incident Commander (IC).

- 4.1.3 Determine if there is smoke or fire present and report to the MCR.
- 4.1.4 Once the Fermilab Fire Department arrives, the field team shall report to the Incident Commander (IC) and assist.

CONTROLLED DOCUMENT

Users are responsible for ensuring they are working to the latest approved revision. Printed or electronically transmitted copies are uncontrolled.

Note: The Incident Commander may request that an expert, who is familiar with the area, enter the building to help with the investigation. The expert who enters the building will be escorted by Fire Department personnel at all times.

4.1.5 If the fire is:

- a. Not real/confirmed: the field team shall remain to assist the IC until the emergency is declared over (10-99).
- b. Real: the field team shall remain to assist the IC and Contact the MCR and request the Crew Chief to report to the scene. The field team will need to determine if any radioactive materials were involved. If no radioactive materials were involved, continue to assist the IC until the emergency is declared over (10-99).

4.1.6 If there were radioactive materials involved, the field team shall perform the following:

- a. Request access list from the MCR if applicable.
- b. Request Rad Tech and RSO assistance.
- c. Ensure all evacuees and entrants remain at the scene until excused by the RSO.
- d. Update the MCR and continue to assist the IC until the emergency is declared over (10-99).
- e. After the emergency is declared over, RSO approval is required for entry into the affected area.
- f. RSO approval required before resuming beam operations.

4.1.7 Initiate recovery maintaining appropriate access control.

Note: Attachment 1: Fire Emergency Response Procedure – Field (Footprint Area) is attached to this procedure which contains a flow chart of this procedure for reference.

4.1.8 Resume beam operations once repairs are made and the appropriate approvals are given.

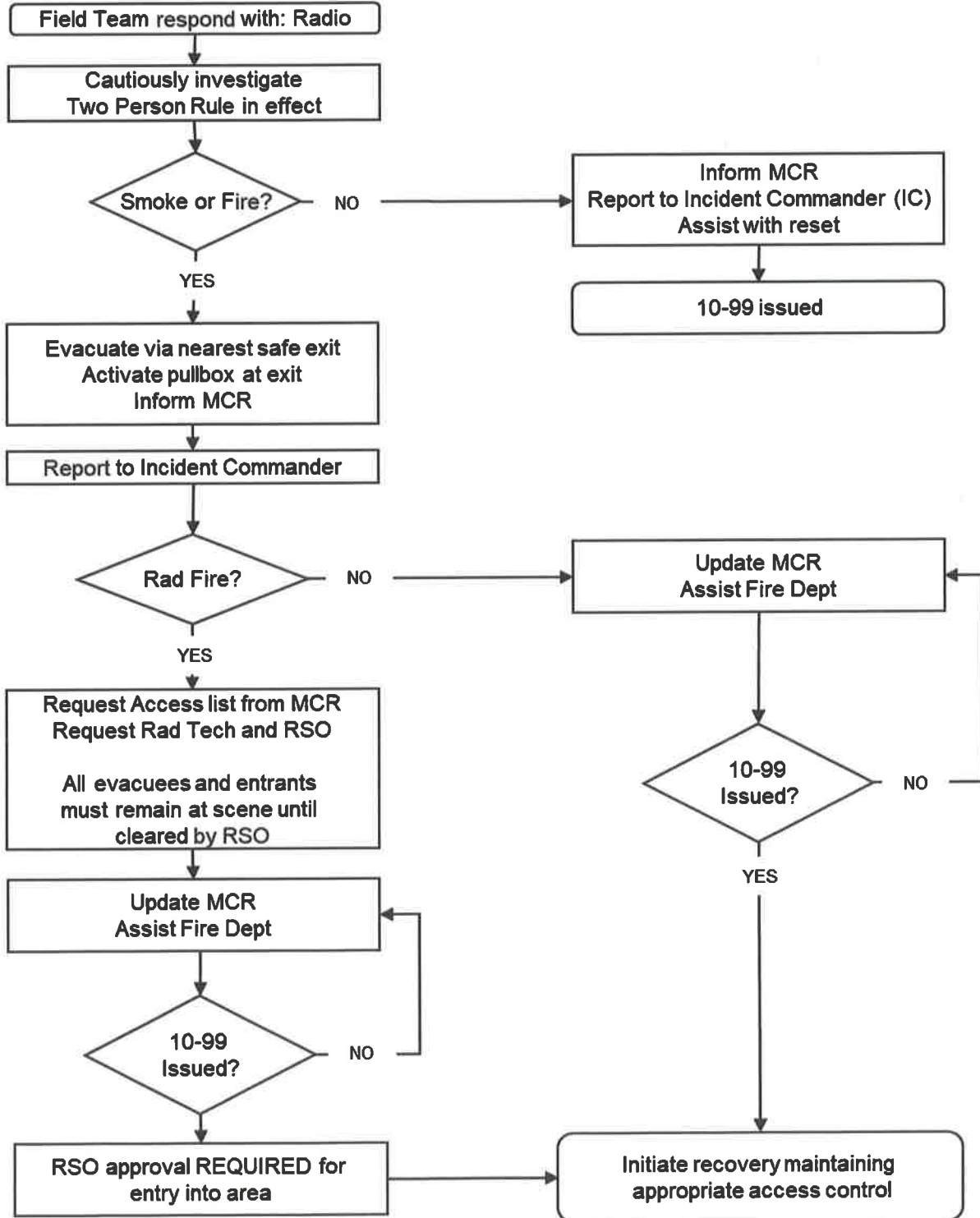
5.0 DISTRIBUTION

- 5.1 An electronic controlled copy of this procedure is maintained on the AD Operations website at: <https://operations.fnal.gov/ops/addp.html>.

CONTROLLED DOCUMENT

Users are responsible for ensuring they are working to the latest approved revision. Printed or electronically transmitted copies are uncontrolled.

Fire Emergency Response Procedure - FIELD (Footprint Area)

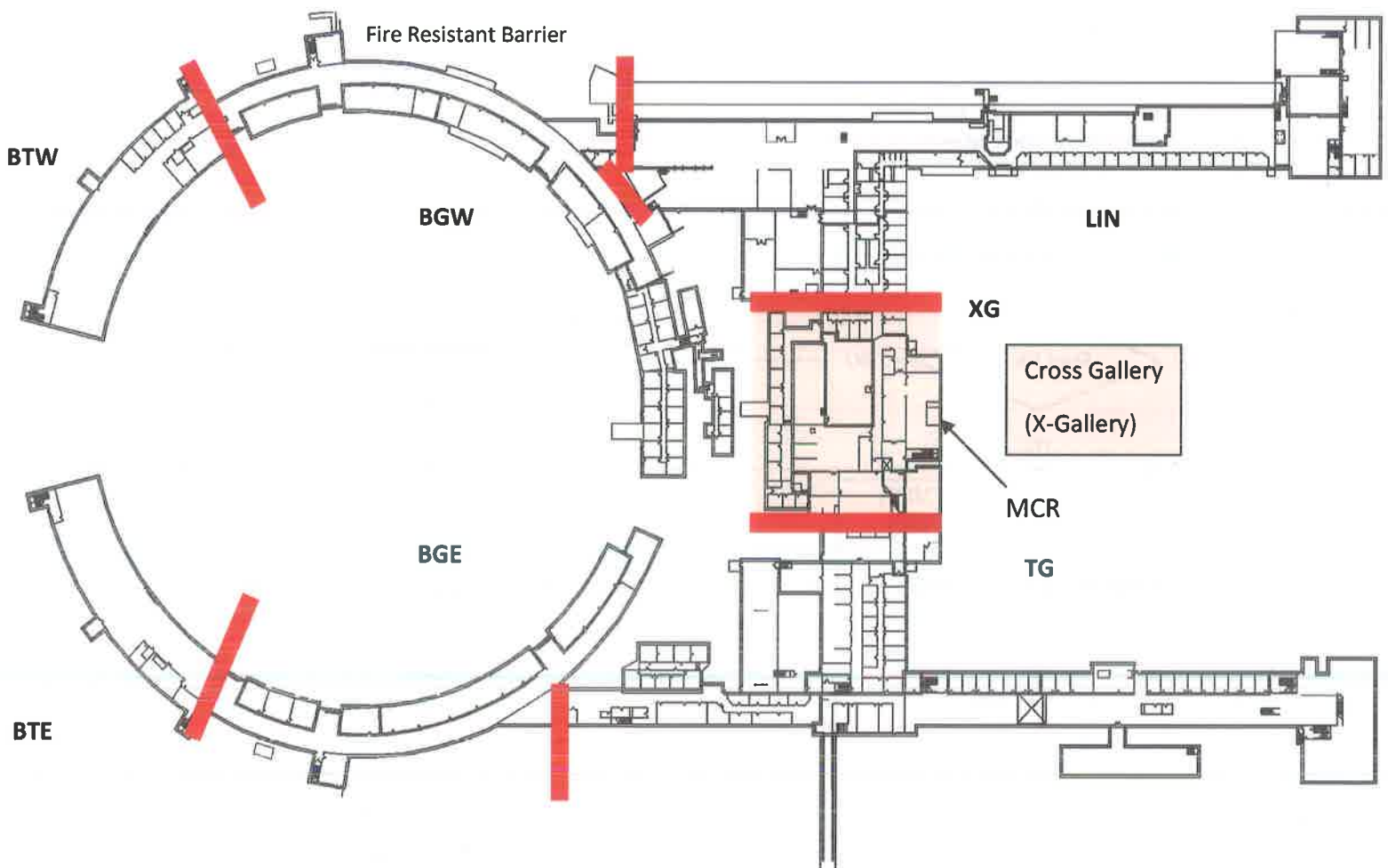


CONTROLLED DOCUMENT

Users are responsible for ensuring they are working to the latest approved revision. Printed or electronically transmitted copies are uncontrolled.

The seven zone areas include (as diagramed below):

LIN	Linac Accelerator
BGW	Booster Gallery West
BTW	Booster Tower West
BTE	Booster Tower East
BGE	Booster Gallery East
TG	Transfer Gallery
XG	Cross Gallery (including the Main Control Room)



CONTROLLED DOCUMENT

Users are responsible for ensuring they are working to the latest approved revision. Printed or electronically transmitted copies are uncontrolled.