

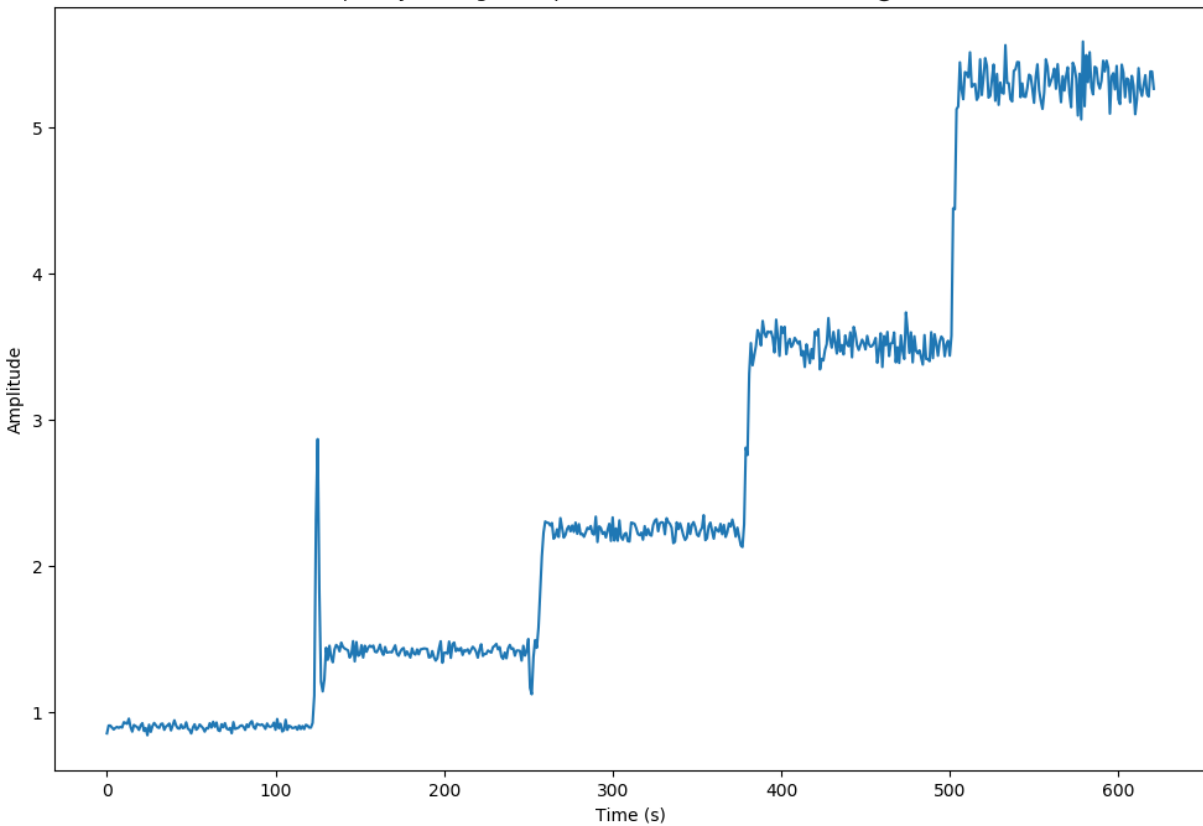
DC offset test (continued)

Jixia Li

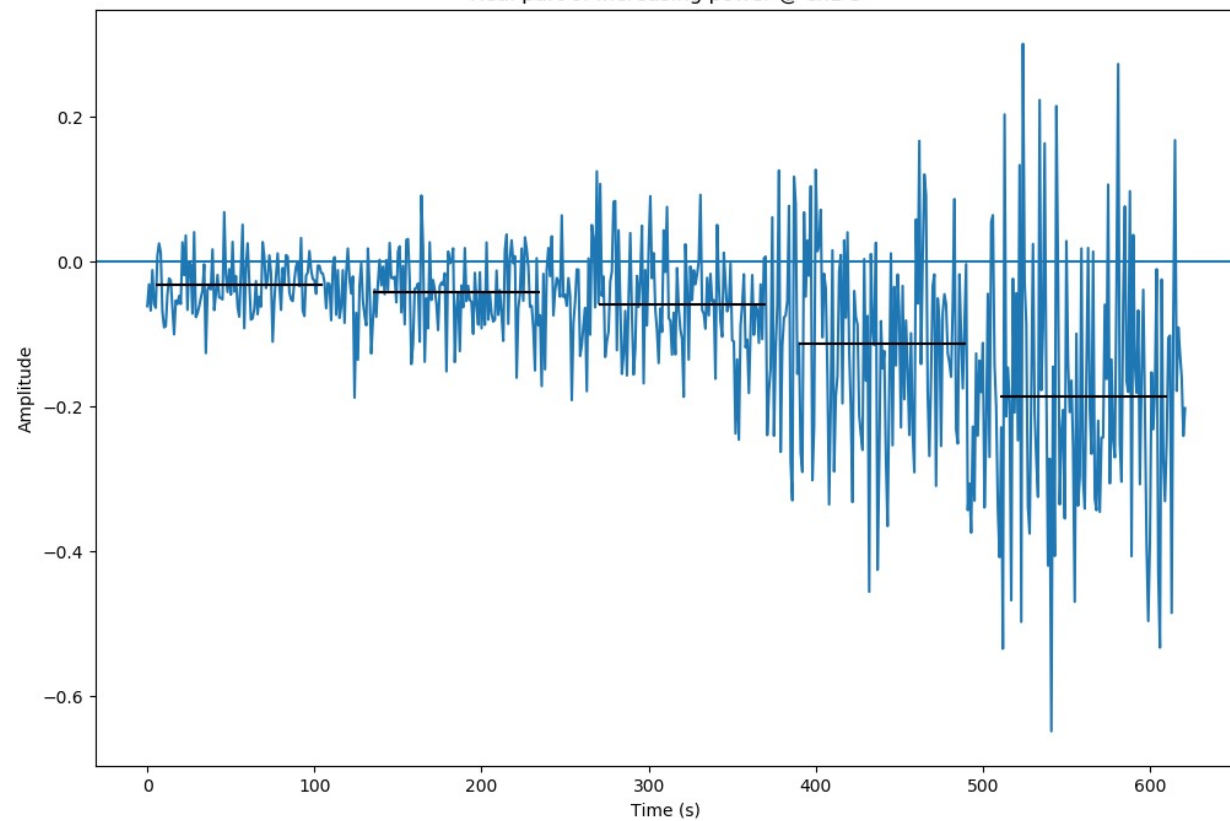
NAOC

Noise signals directly input to ADC (very short cable this time).

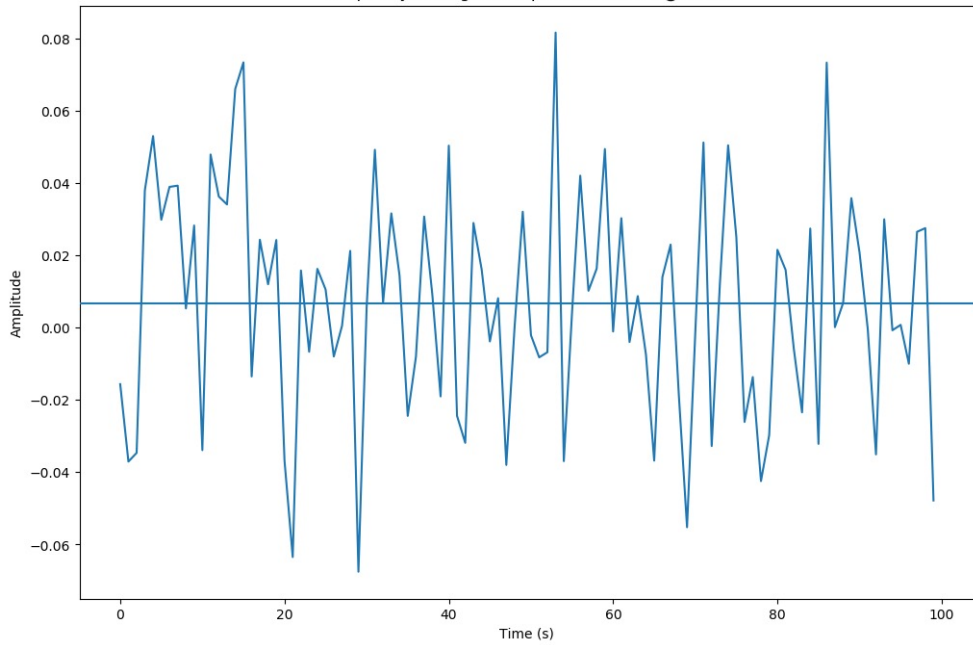
Frequency averaged amplitudes of -10/-8/-6/-4/-2 dBm @ ch1-3



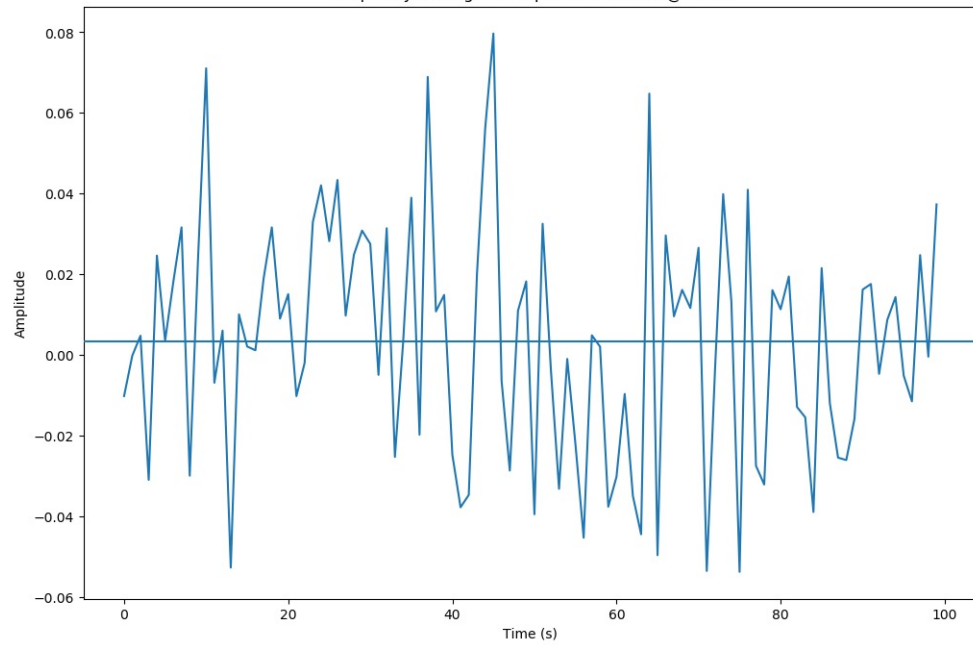
Real part of increasing power @ ch1-3



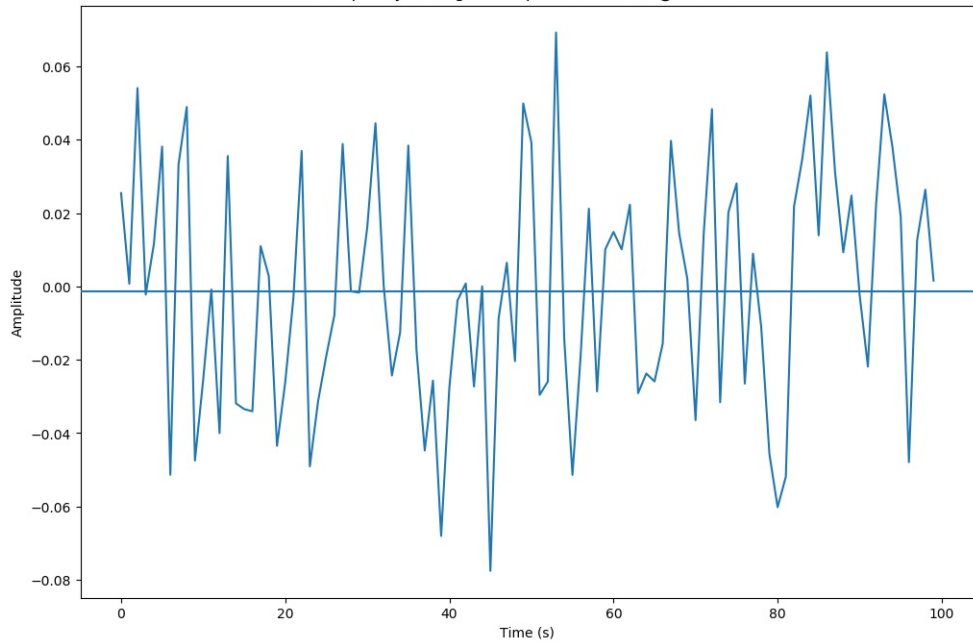
Frequency averaged real part of -10 dBm @ ch1-5



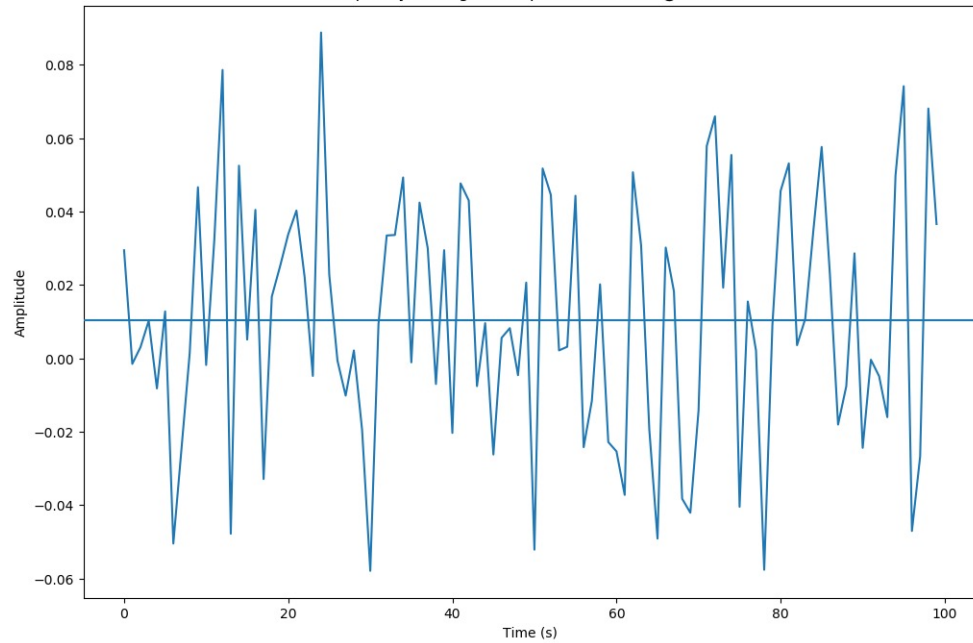
Frequency averaged real part of -10 dBm @ ch1-9



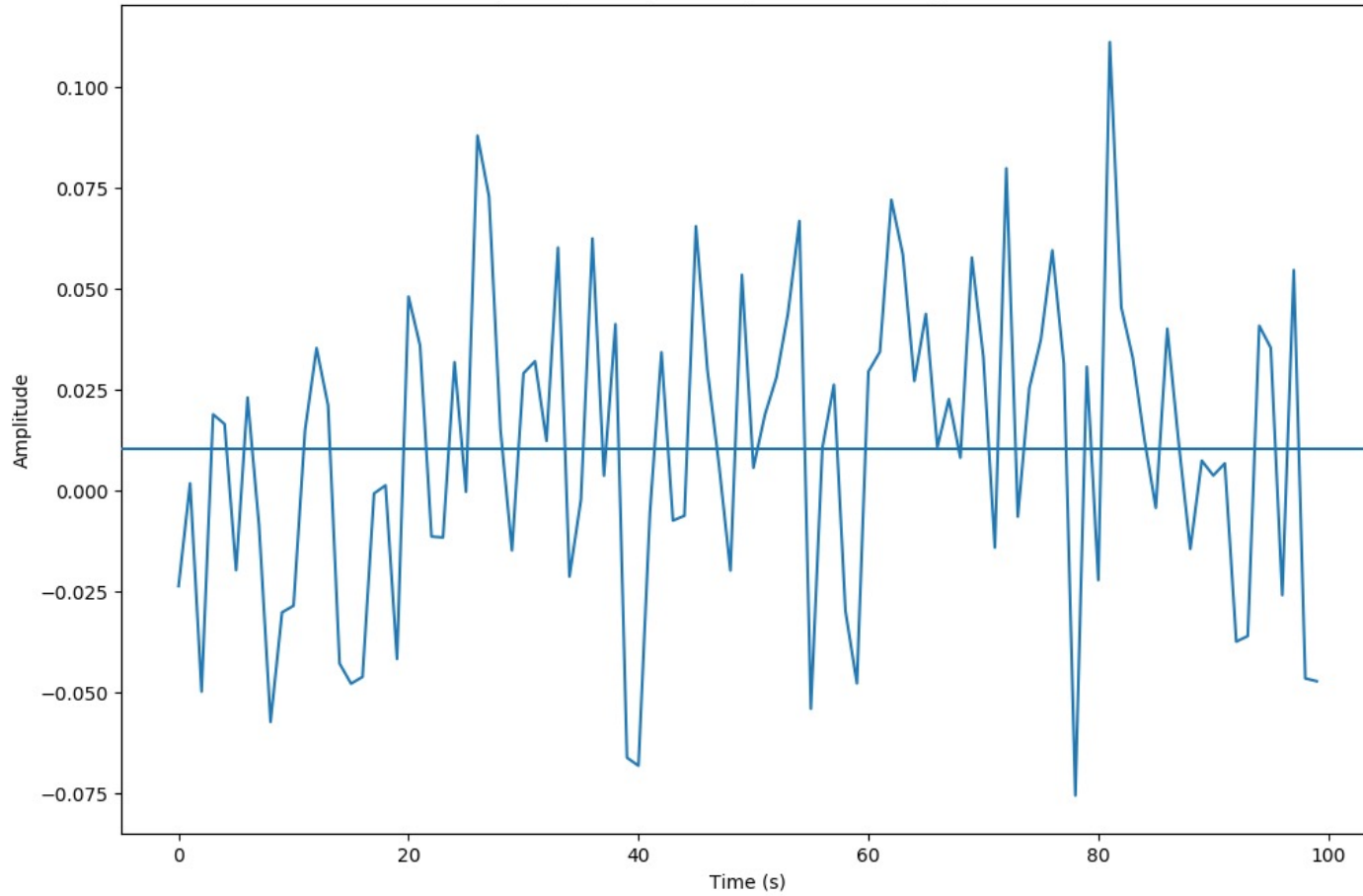
Frequency averaged real part of -10 dBm @ ch1-17



Frequency averaged real part of -10 dBm @ ch1-25



Frequency averaged real part of -10 dBm @ ch9-25



Channels	Board1	Board2
ADC1	Ch1,2,3...8	Ch17,18,19...24
ADC2	Ch9,10,11...16	Ch25,28,29...32