

Tianlai-II Site Construction

Kai He, Jixia Li

2023/9/26



2m deep

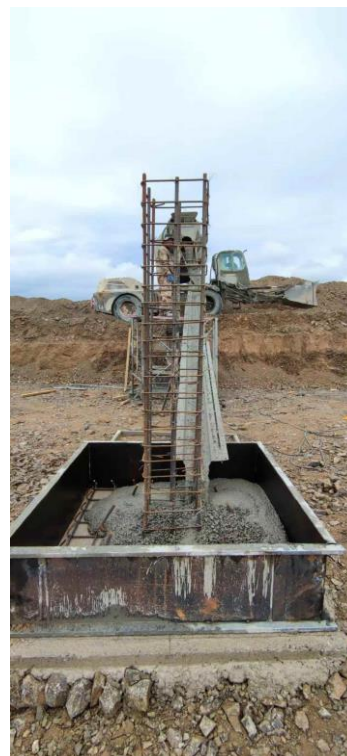
Embedded parts provided by the antenna manufacture



cement injection



Underground Pier 1.6m*1.6m



1st measurement

cement setting



3rd measurement



2nd measurement

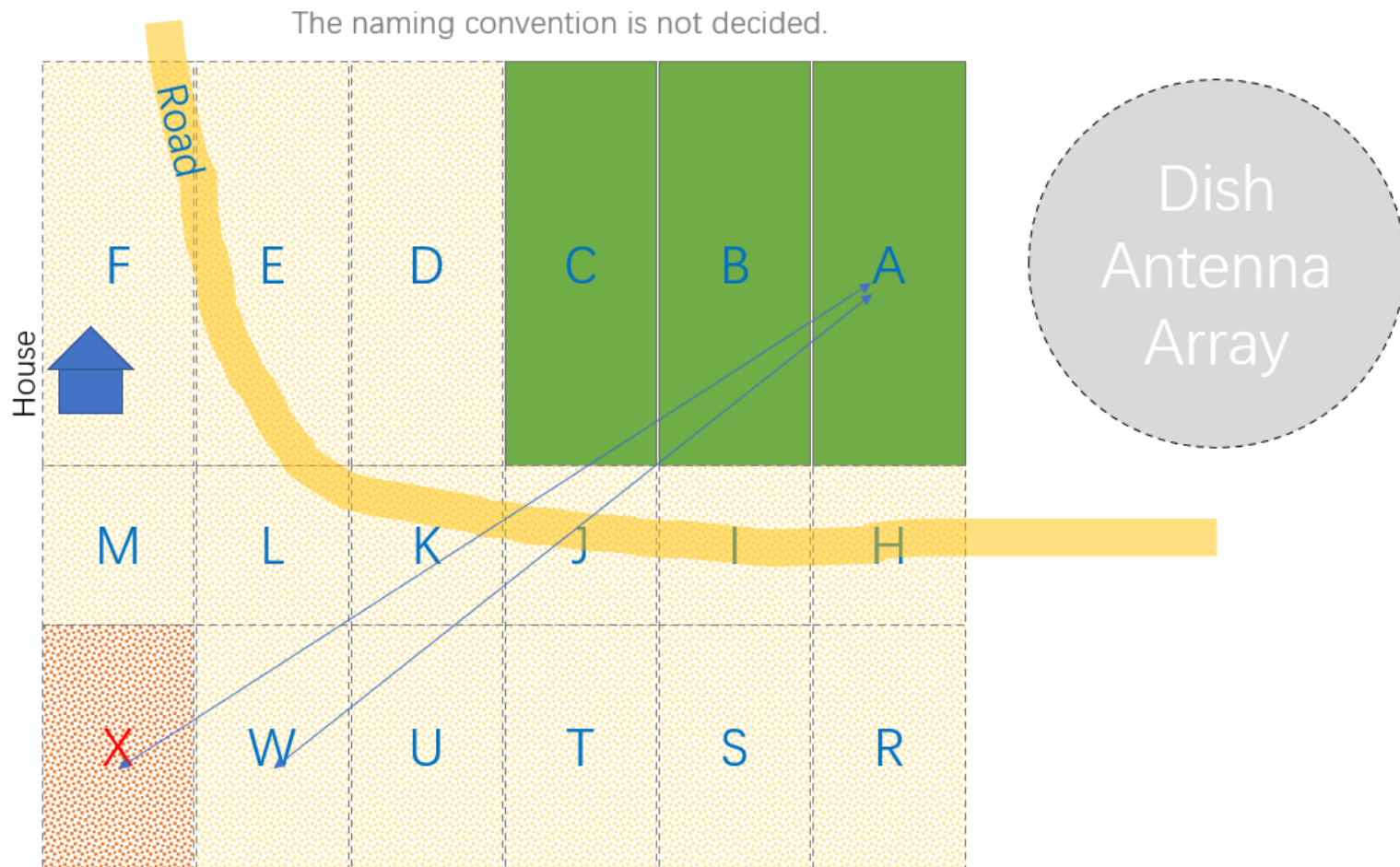
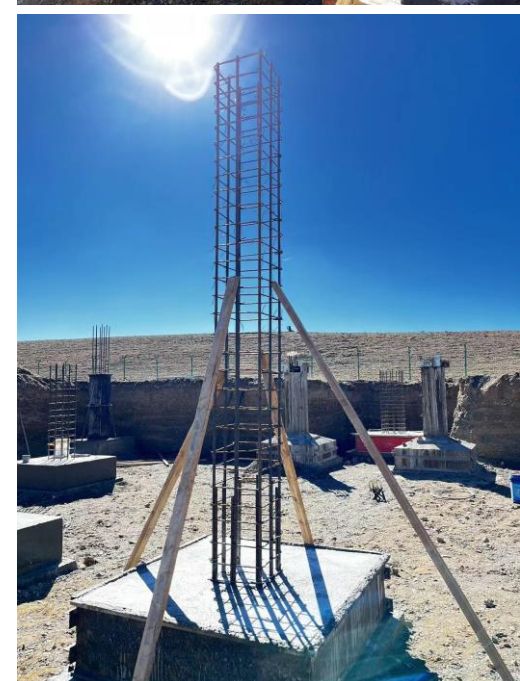


Backfill the soil



Site B and C are finished





$$AX=90m \quad AW=78m$$

Northeastern part is higher than southwestern part.