

DUNE Operations Meeting Week Of 2023-01-29

Call details are on <https://indico.fnal.gov/event/63195/>

General Information

- The purpose of the meeting is:
 - to report significant operational issues (i.e. issues which can or did degrade experiment or site operations) which are ongoing or were resolved after the previous meeting;
 - to announce or schedule interventions at sites or services;
 - To inform about recent or upcoming changes in the experiment activities or systems having a visible impact on sites;
 - to provide important news about the middleware;
 - to communicate any other information considered interesting for DUNE operations.
- Any topic requiring more than 5 minutes of discussion should be noted and then discussed at another venue
- Whenever a particular topic needs to be discussed at the operations meeting requiring information from sites or experiments, it is highly recommended to announce it by email to the dune-computing-sites list (at listserv.fnal.gov) to allow the meeting coordinators to make sure that the relevant parties have the time to collect the required information, or invite the right people at the meeting. It is requested that such topics be announced no later than COB the Friday before the next meeting."
- Relevant contacts for test beams, services, and sites below should replace the "NC" either with a status or with "NTR" (nothing to report)

Monday 29 Jan 2024

Attendance

S. Timm, E. Pennacchio, M. Kirby, J. Perry, Wenlong, K. Herner, A. McNab, H. Schellman, R. Illingworth

Production Calendar:

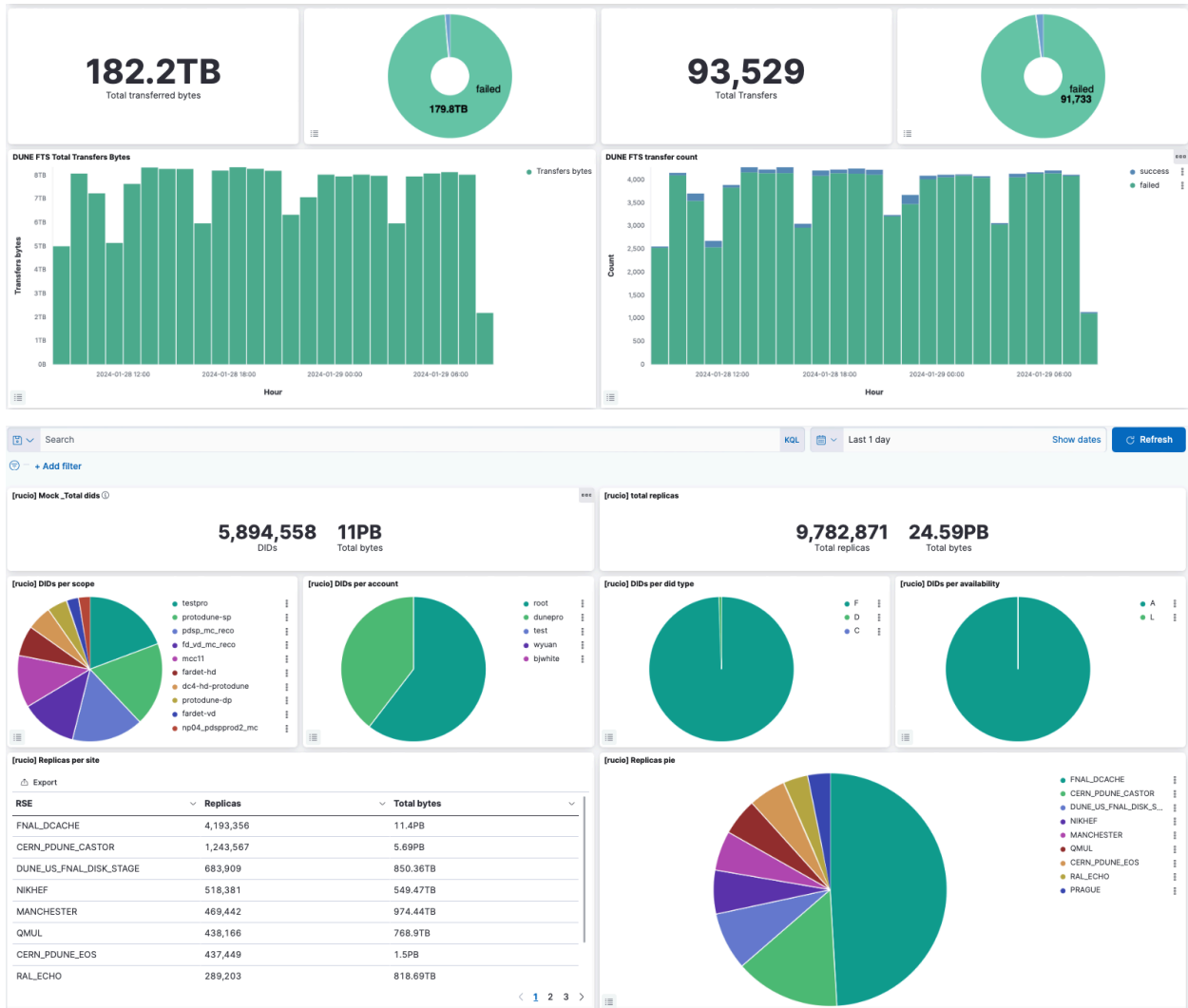
<https://calendar.google.com/calendar/u/0/r/month?cid=i7ljj9ilk70hin7cr1l2e1kj4@group.calendar.google.com&pli=1>

Production graphs and slides

Discussion re. 2GeV production.. Checksum logic was changed in the poms config on dec 22 that ended up calculating the checksum of the michelremoving file instead of the regular root

file, and then that getting misdeclared as the checksum of the regular root file. DeclaD didn't catch this, this is a bug. In general need to make a better check of the metadata and checksum—Steve points out this needs to be automated as several of us missed this just looking at it by eye. Note the large failure percentage in the graphs below is due to all the files that currently have bad checksum.

Data management graphs and slides



Announcements of Significant Operational Issues:

NFS-to-Ceph port happening 3rd Wednesday of February

Running Expt. Round Table

NP02:

<https://indico.fnal.gov/event/60987/contributions/282436/attachments/174393/236398/ProtoDUNEStatus.pdf>

NP04: Power cut today in EHN1

ArgonCube 2x2: One of the 3 new DAQ servers is installed. Waiting to fill with Liquid Argon until final ODH safety is signed off

TOAD: Expect to start beam when Fermilab accelerator does

Iceberg: Planning large calibration run (9x9 parameter space of cold electronics settings) in March-May

DUNE Services Round Table:

Data Management: Found 4806 files with bad checksum from 2GeV production, have to fix. (rucio developers have given us a code snippet that should work)

Investigating some of the file upload failures from FD-HD-VD reco2. Rucio upgrade to v33 expected this week.

Authentication: NC

Global Pool: NC

Monitoring: AWT at risk during justIN changes below.

Workflow (justIN): Reconfigured production instance to be justin-old.dune.hep.ac.uk now and ~frozen. Deploying new production instance with current dev version this afternoon (was waiting for OpenStack and CILogon callback updates.)

AWT/ETF: NC

AWT: <https://justin.dune.hep.ac.uk/dashboard/?method=awt-results>

ETF:

https://etf-dune-prod.cern.ch/etf/check_mk/index.py?start_url=%2Fetf%2Fcheck_mk%2Fview.py%3Fview_name%3Dallhosts

Database Servers: NC

Networking: NC

DC24 discussion, should we modify the work plan for transatlantic. Should find out if this is necessary over next 2 weeks of keepup. Ken's next call with DOE on Wed. wonder if should add this to slides. $\frac{2}{3}$ of DC24 DUNE stuff is internal to the US.. the part in question is the distributed processing. Robert—do we need the enhanced dCache monitoring before the data challenge? Doug—not sure.. When do we need to know by—Wednesday morning. CMS already running 9.2

Sites Round Table

BR-CBPF: NC

CA-Victoria: Failing (auth) ticket still open

CA-SFU: NC

CERN: NC

CH-BERN: NC

CZ-FZU(Prague): NC

ES-PIC+CIEMAT: NC

FR-CCIN2P3: NTR

IN-TIFR: NC

IT-CNAF: NC

NL-NIKHEF/SurfSARA: NC

UK-GRID-PP:

Edinburgh: NC

Manchester: NC

RAL-Tier1: NC

RAL-PP: NC

QMUL: NC

Liverpool: NC

Durham: Ticket still open

Oxford: NC

Bristol: NC

Sheffield: NC

Imperial: NC

Brunel: NC

Lancaster: NC

Other:

US-BNL: NC

US-FNAL:

Enstore/dCache: see above discussion

Ceph migration: Happening 3rd wed in Feb

Jobsub_Lite: NC

Batch Clusters: NC

Computing Access: NC

Wiki/Documentation: NC
US-HEPCloud (NERSC): Stuck on 3rd party transfer, ticket filed..
US-OSG-Opportunistic: NC

Review of github issues <https://github.com/DUNE/dist-comp/issues>