

# Charge readout DQM update

Jaafar Chakrani for the LBNL group  
*Lawrence Berkeley National Laboratory*  
<jchakrani@lbl.gov>

2x2 DAQ/computing meeting  
December 14th, 2023



# DQM

---

- <https://github.com/lbl-neutrino/pacmon>
- Goal: implement in pacmon DQM metrics to be written in InfluxDB, which will then be displayed in Grafana

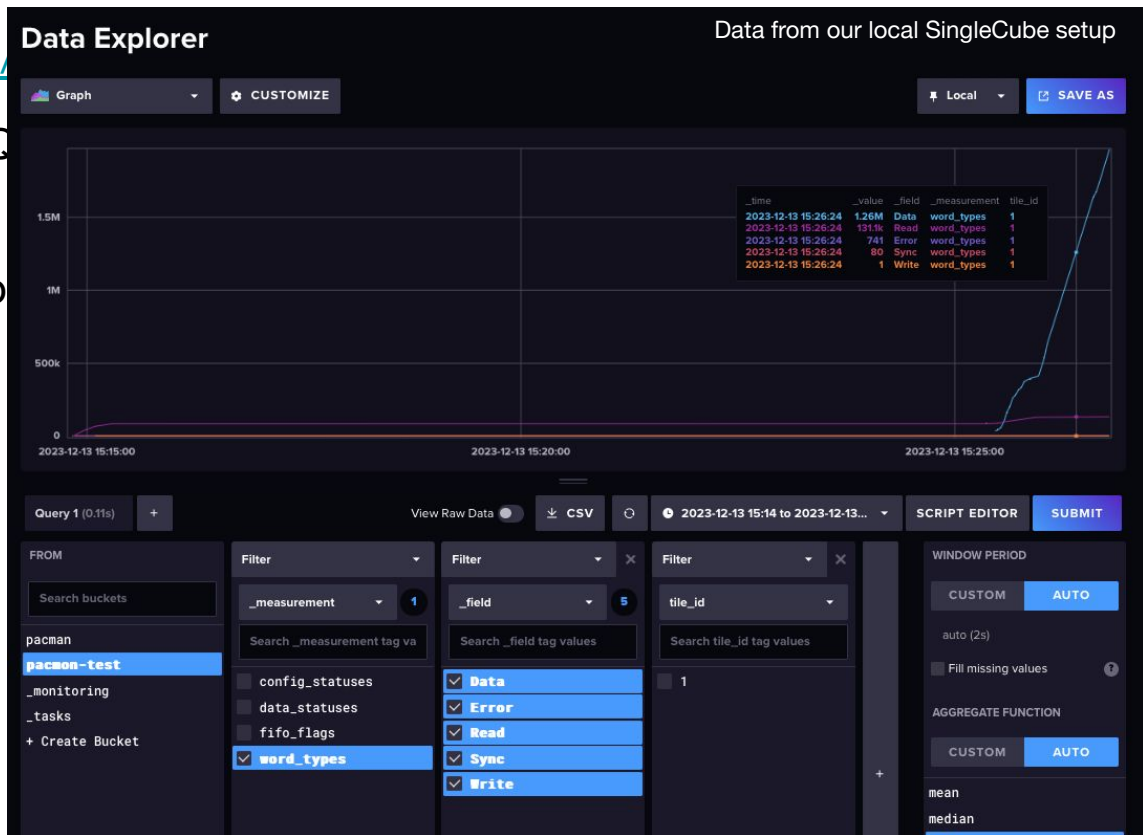
# DQM

---

- <https://github.com/lbl-neutrino/pacmon>
- Goal: implement in pacmon DQM metrics to be written in InfluxDB, which will then be displayed in Grafana
- Metrics implemented in pacmon so far:

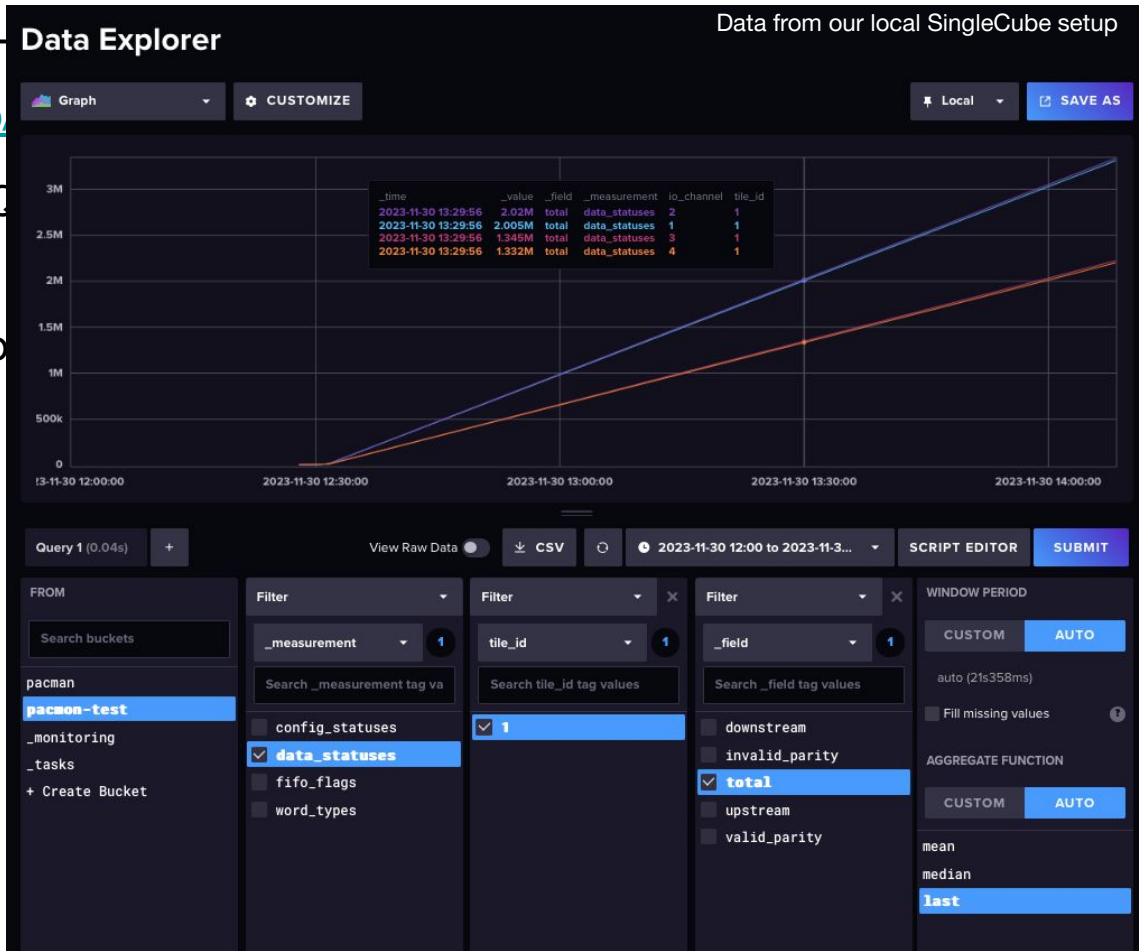
# DQM

- <https://github.com/lbl-neutrino>
- Goal: implement in pacmon DQM displayed in Grafana
- Metrics implemented in pacmon
  - **Packet rate by packet type**



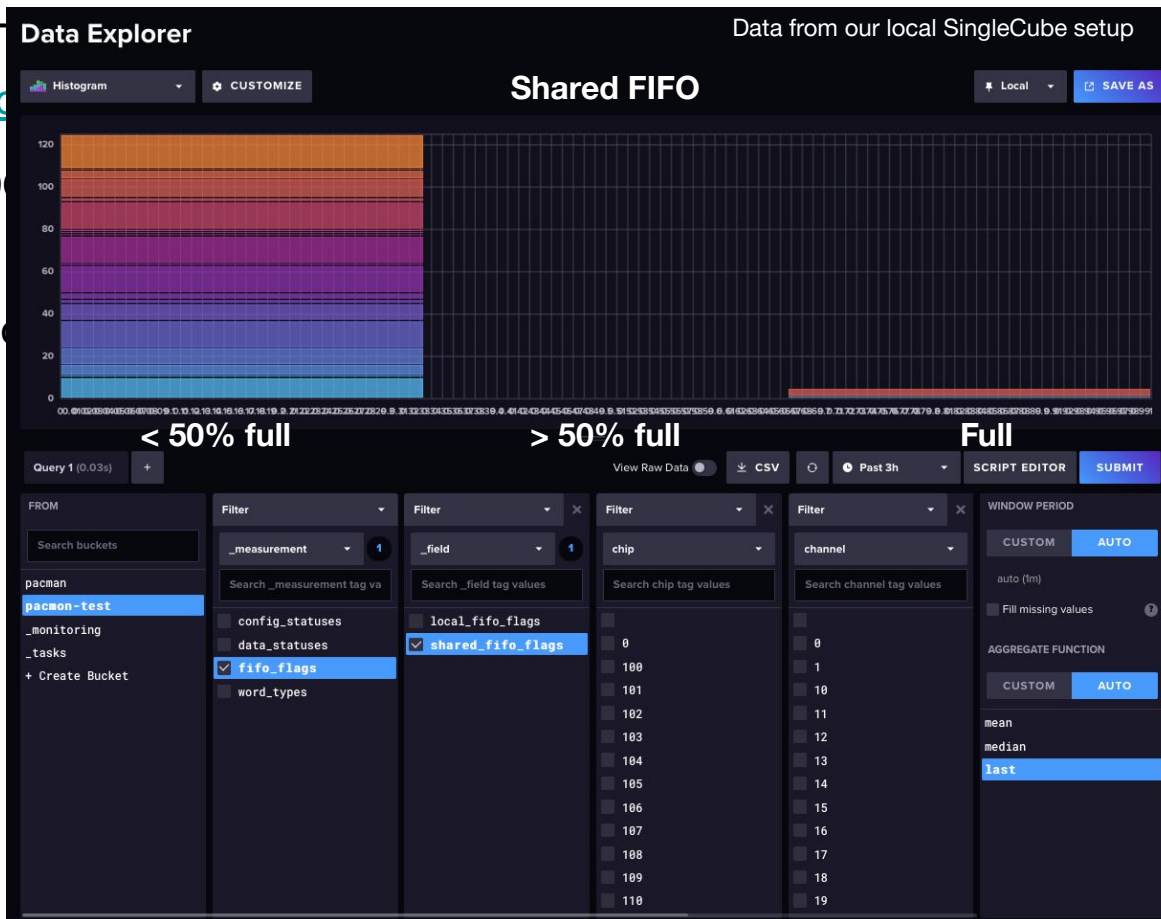
# DQM

- <https://github.com/lbl-neutrino>
- Goal: implement in pacmon DQM displayed in Grafana
- Metrics implemented in pacmon
  - Packet rate by packet type
  - **Data rate by IO channel**



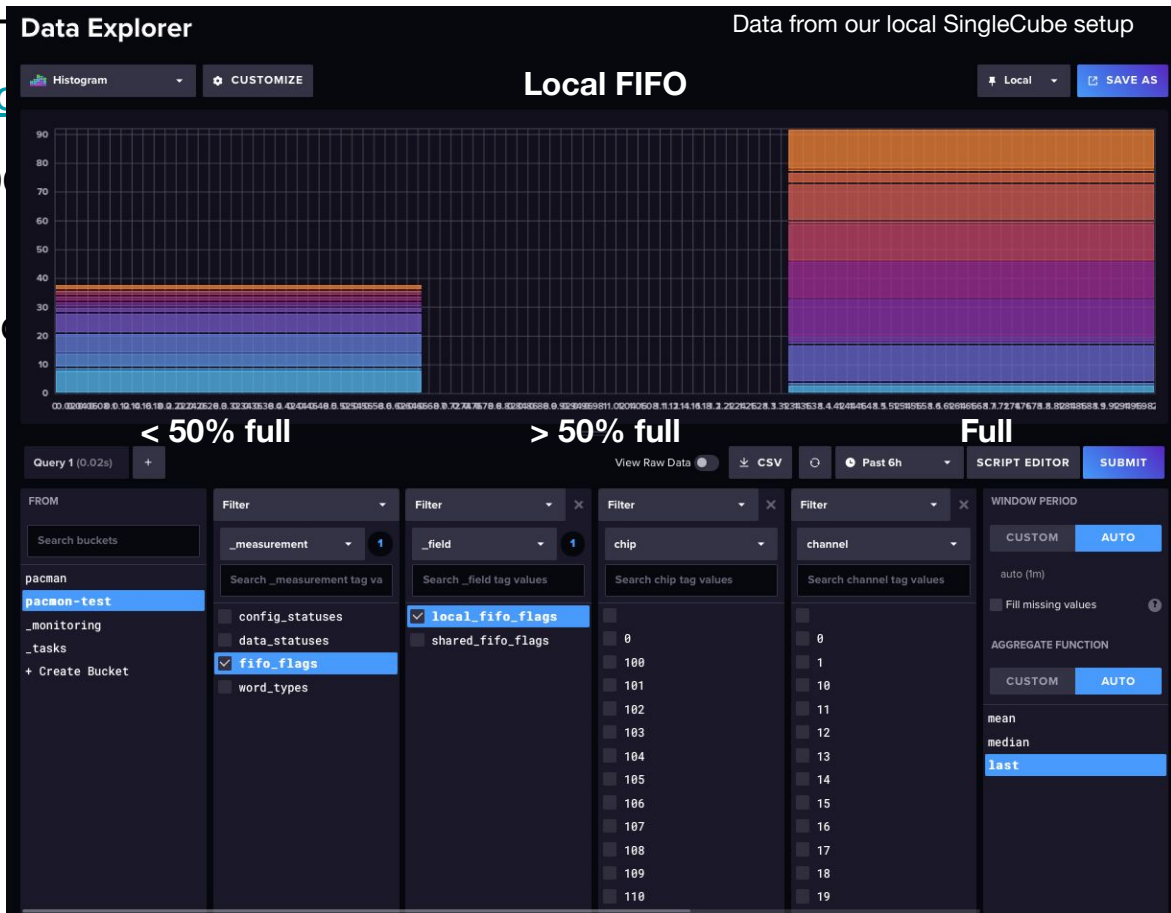
# DQM

- <https://github.com/lbl-neutrino>
- Goal: implement in pacmon DQM displayed in Grafana
- Metrics implemented in pacmon
  - Packet rate by packet type
  - Data rate by IO channel
  - **Packet local/shared FIFO**



# DQM

- <https://github.com/lbl-neutrino>
- Goal: implement in pacmon DQM and displayed in Grafana
- Metrics implemented in pacmon
  - Packet rate by packet type
  - Data rate by IO channel
  - **Packet local/shared FIFO**



# DQM

---

- <https://github.com/lbl-neutrino/pacmon>
- Goal: implement in pacmon DQM metrics to be written in InfluxDB, which will then be displayed in Grafana
- Metrics implemented in pacmon so far:
  - Packet rate by packet type
  - Data rate by IO channel
  - Packet local/shared FIFO
- More metrics are currently being added (e.g. packet ADC info, clock sync over time...)
- Work on displaying the metrics in Grafana is ongoing