

Item #4 -
Connector
Outside
Elevator 2

Item #3 -
Collaboration
Area 1660

Item #2 -
Collaboration
Area 1800

Item #1 -
Conference
Room 1880

Item #5 -
Wellness
1535

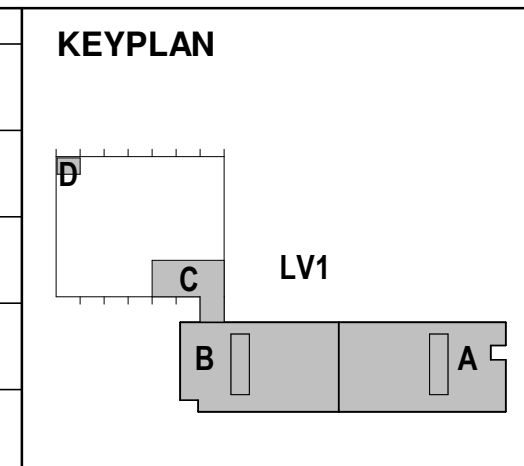
IERC LEVEL 1

1 IERC LEVEL 01 FLOOR PLAN - OPT
1/16" = 1'-0"

02:1300-000-FERMILAB-IERC_detached.rvt

REV.	DATE	DESCRIPTIONS	REVISIONS
03.11.20	FD-13 100 FINAL DESIGN		

A/E CONSULTANT		DATE	
DESIGNED	RJ		
DRAWN	RC		
CHECKED	AJ		
APPROVED	MW		



PERKINS + WILL

410 North Michigan Avenue
t 312.755.0770
f 312.755.0775
www.perkinswill.com

Copyright © 2016 Perkins+Will

CONSULTANTS

ARUP NORTH AMERICA LTD.
35 E Upper Wacker Dr
Suite 1800
Chicago, IL 60601
t 312.849.5610
www.arup.com

TERRA
225 W. Ohio Street
4th Floor
Chicago, IL 60654
t 312.467.0123
f 312.467.0220
www.terraengineering.com

CCS
1815 S. Meyers Road
Suite 1070
Oakbrook Terrace, IL 60181
t 800.443.8607
f 630.678.0858
www.ccsdifference.com

FERMI NATIONAL ACCELERATOR LABORATORY
UNITED STATES DEPARTMENT OF ENERGY

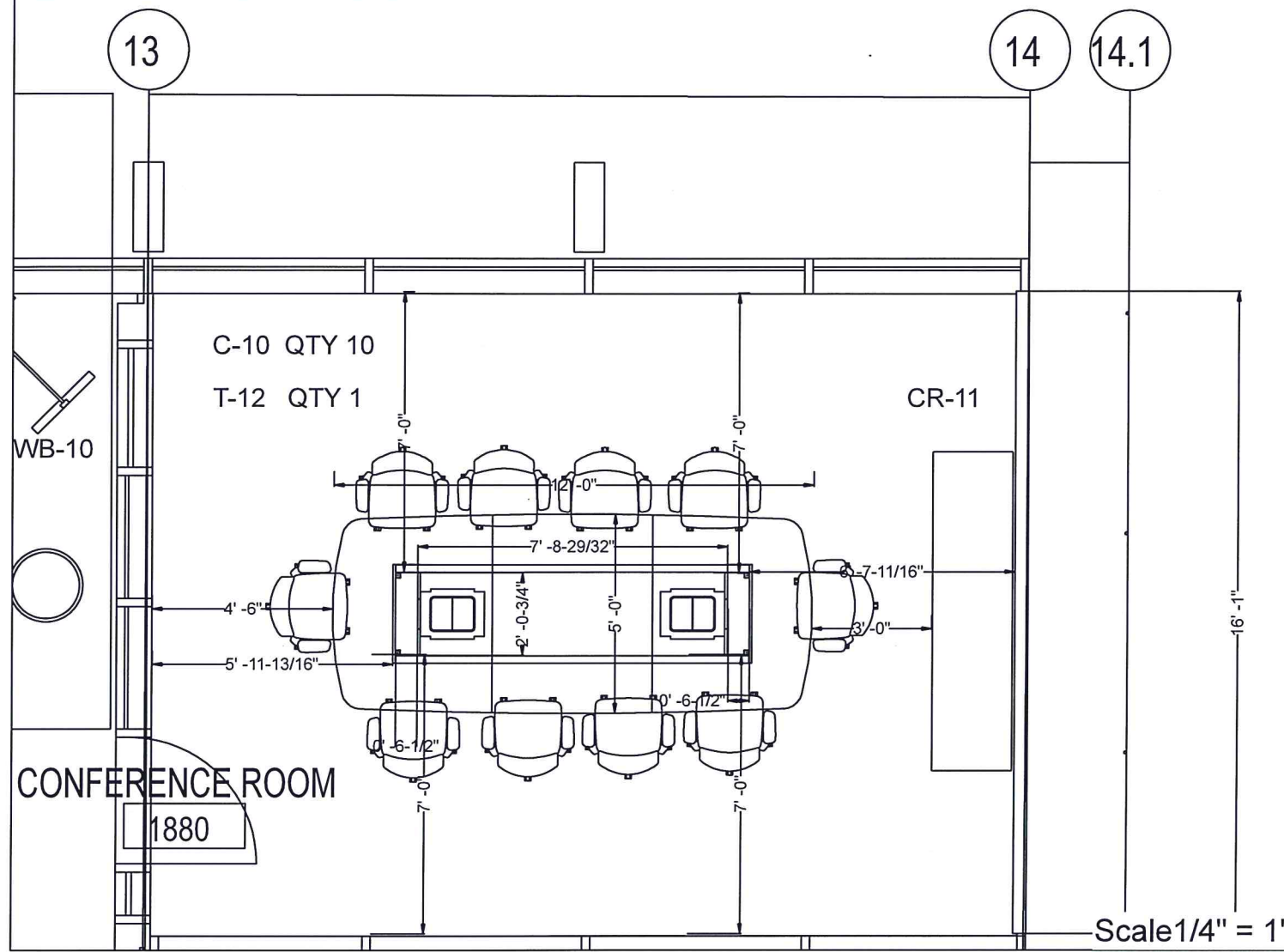
LEVEL 01 OVERALL FLOOR PLAN

DRAWING NO. 2-6-1

A10-01-OPT

REV.

Item #1 - Conference Room 1880



T-12	C-10	CR-11
		
FAWN CYPRESS	MIST MESH	WILSONART DOVE GREY LAMINATE
		
FLINT	BRISA CREAM	

DRAWING REVIEW
 These drawings must be reviewed by the Owner/Architect/Contractor, or other appropriate representative prior to furniture order. If these drawings are correct mark the appropriate box below. If incorrect, note corrections to be made and return to Midwest Office Interiors for corrections.

APPROVED
 APPROVED AS NOTED
 REVISE AND RESUBMIT

Signature: _____
 Print: _____
 Date: _____

DISCLAIMER: Signing off here acknowledges that you have reviewed all documents in the set.

Midwest Office Interiors
 10330 Argonne Woods Drive - Suite 600,
 Woodridge, IL 60517
 Main Phone: 630.850.8700
 www.MidwestOfficeInc.com

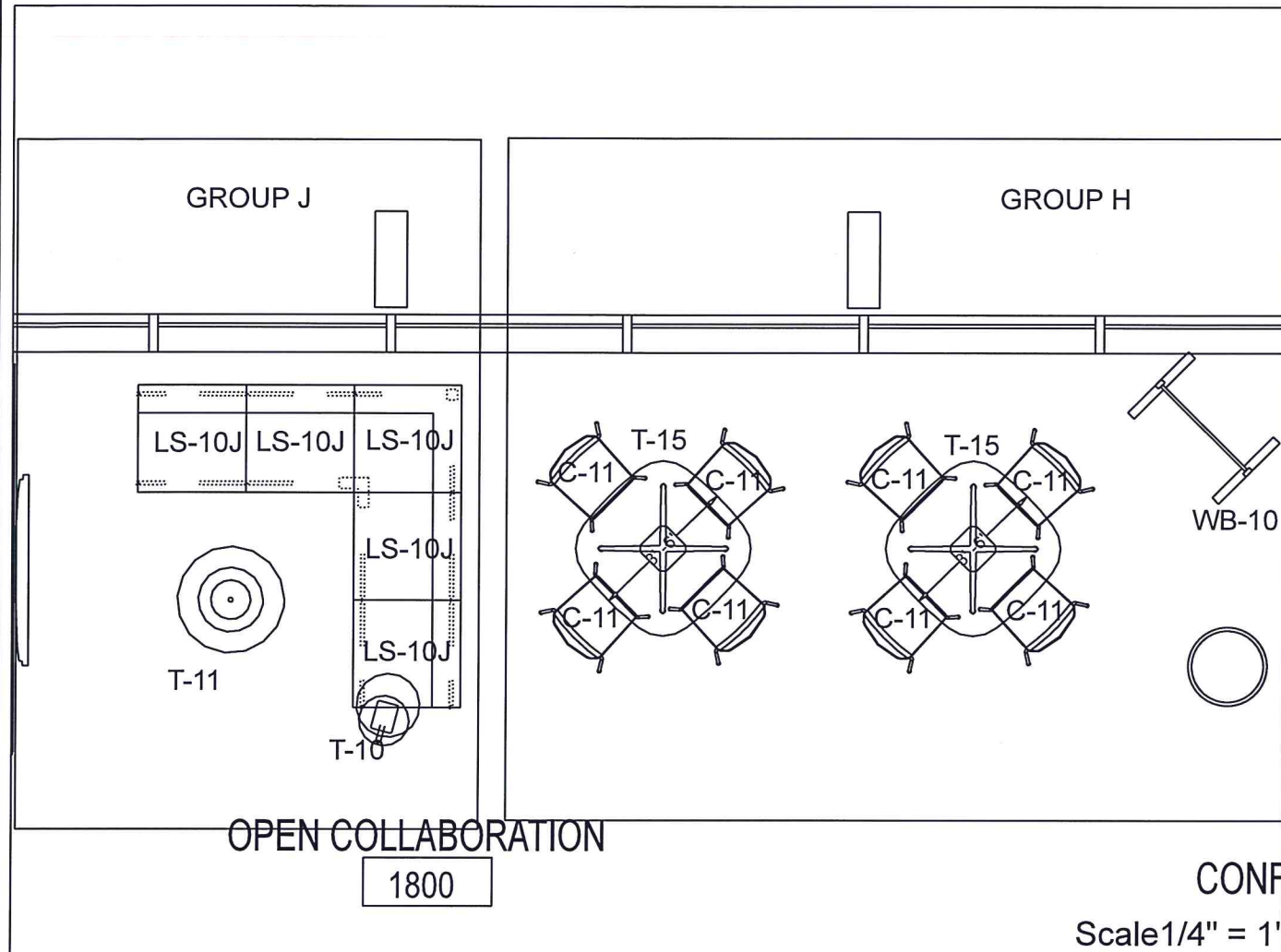
IERC COMMON AREAS
1ST FL CONFERENCE RM 1880
 60X144 SOFT ARC TOP IN FAWN CYPRESS
 EXPANDABLE BASE IN CHARCOAL
 EVO CONFERENCE CHAIRS FIXED ARMS

Page/Sheet 1/1
 Account Exec: C. FISCHER
 Designer: S. HAYDEN
 Print Date: 1/24/2023

REV	REVISION DESCRIPTION	DWN	DATE
1	CHANGE CREDENZA TO 12' WIDE	SH	1/4/2023

DISCLAIMER
 These designs and plans are the property of Midwest Office Interiors, Inc. and have been generated for the client listed above. They are not to be used for construction. This drawing should not be reproduced or distributed for any other project without written permission from Midwest Office Interiors, Inc.

Item #2 - Collaboration Area 1800

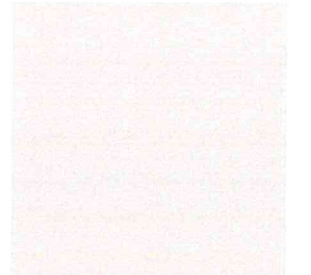


DRAWING REVIEW
 These drawings must be reviewed by the Owner/Architect/Contractor, or other appropriate representative prior to furniture order. If these drawings are correct mark the appropriate box below. If incorrect, note corrections to be made and return to Midwest Office Interiors for corrections.

APPROVED
 APPROVED AS NOTED
 REVISE AND RESUBMIT

Signature _____
 Print _____
 Date _____

DISCLAIMER: Signing off here acknowledges that you have reviewed all documents in the set.



LOFT LAMINATE FOR TABLES



C11
LAVA POLY SHELL



MOXIE CHERRY VINYL UPHOLSTERY



LS-10
MANNER EMBER UPHOLSTERY

Midwest Office Interiors
 10330 Argonne Woods Drive - Suite 600,
 Woodridge, IL 60517
 Main Phone: 630.850.8700
 www.MidwestOfficeInc.com

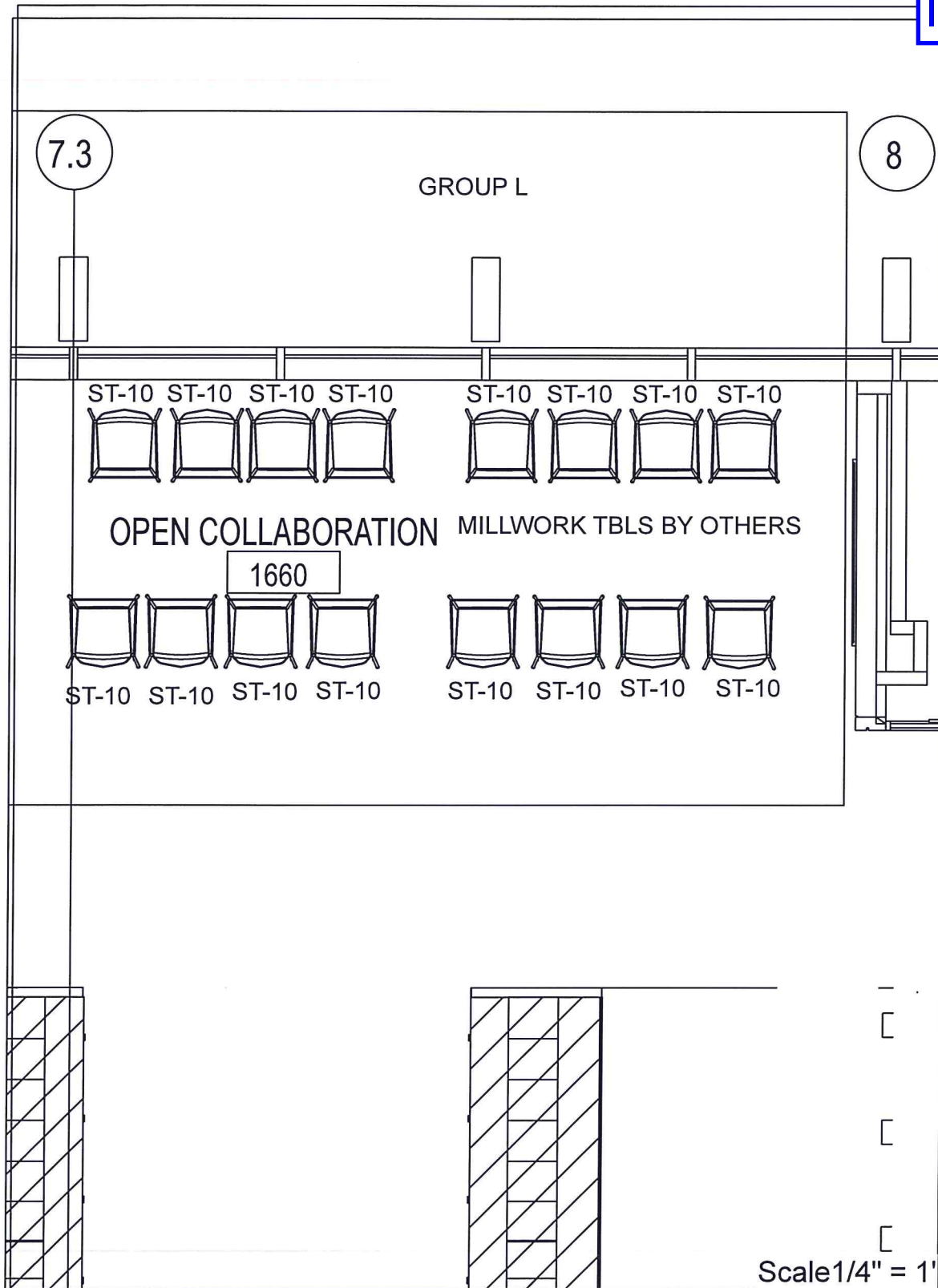
IERC COMMON AREAS
 1ST FLOOR GROUP H & J
 H: 42" SQ STRUCTURE TABLES , VICINITY CHAIRS
 J: JETTY MOD LOUNGE , BRIEFING TABLES

Page/Sheet 1/1
 Account Exec: C. FISCHER
 Designer: S. HAYDEN
 Print Date: 1/24/2023

REV	REVISION DESCRIPTION	DWN	DATE
1	CHANGE CREDENZA TO 12' WIDE	SH	1/4/2023

DISCLAIMER
 These designs and plans are the property of Midwest Office Interiors, Inc. and have been generated for the client listed above. They are not to be used for construction. This drawing should not be reproduced or distributed for any other project without written permission from Midwest Office Interiors, Inc.

Item #3 - Collaboration Area 1660



DRAWING REVIEW

These drawings must be reviewed by the Owner/Architect/Contractor, or other appropriate representative prior to furniture order. If these drawings are correct mark the appropriate box below. If incorrect, note corrections to be made and return to Midwest Office Interiors for corrections.

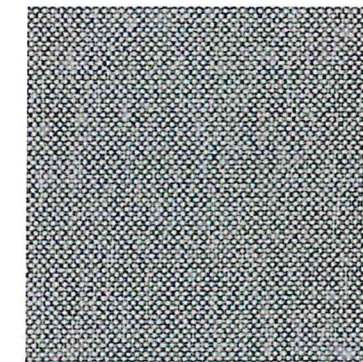
APPROVED
 APPROVED AS NOTED
 REVISE AND RESUBMIT

Signature _____
 Print _____
 Date _____

DISCLAIMER: Signing off here acknowledges that you have reviewed all documents in the set.



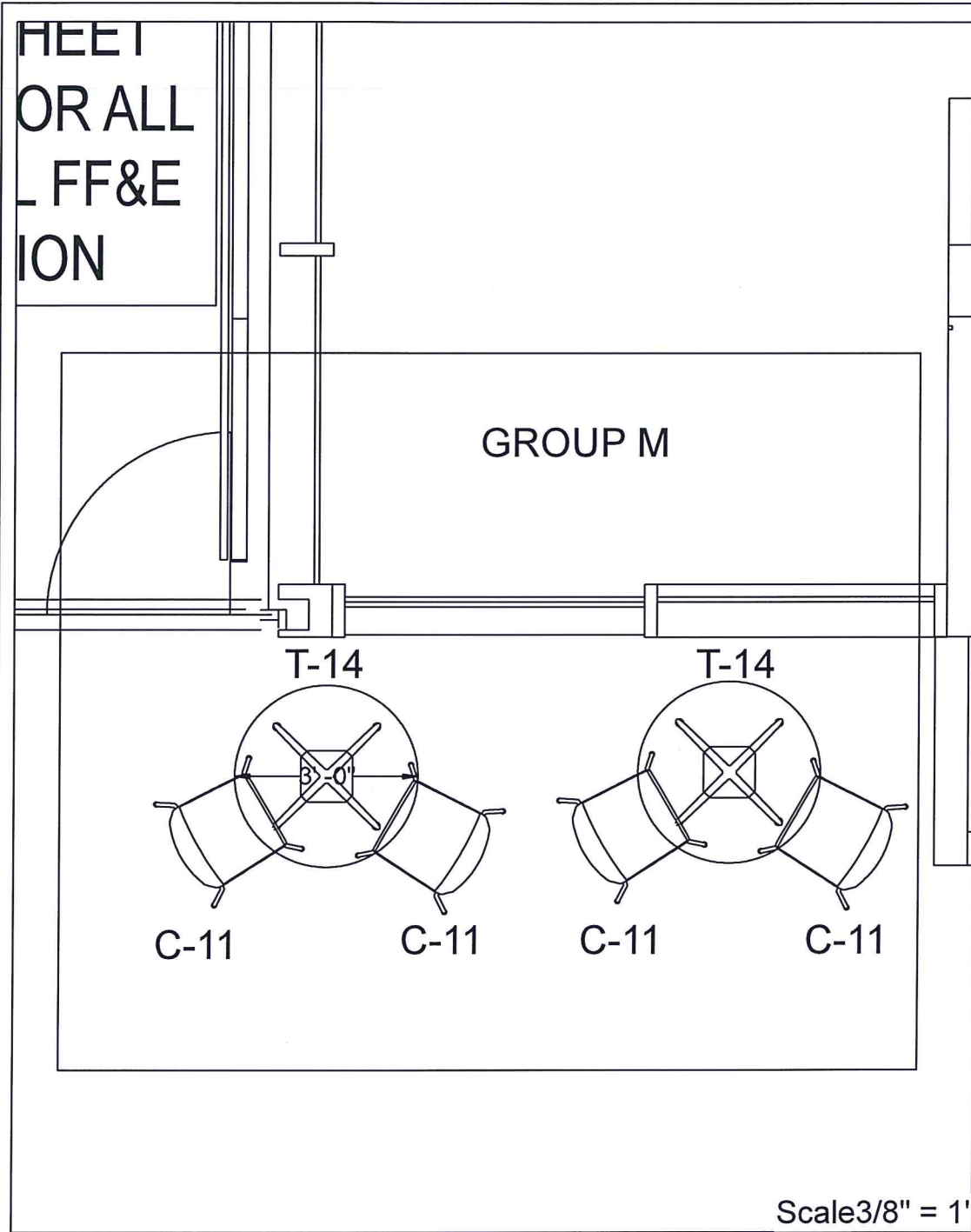
LAVA POLY SHELL



MODE SYCAMORE UPHOLSTERY

REV	REVISION DESCRIPTION	DWN	DATE
1	CHANGE CREDENZA TO 12' WIDE	SH	1/4/2023

Item #4 - Connector Outside Elevator 2

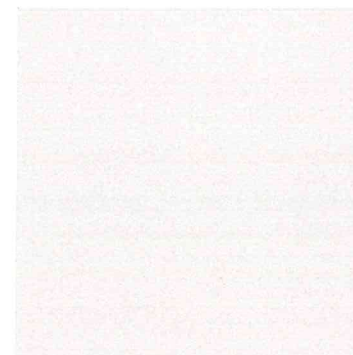


DRAWING REVIEW
 These drawings must be reviewed by the Owner/Architect/Contractor, or other appropriate representative prior to furniture order. If these drawings are correct mark the appropriate box below. If incorrect, note corrections to be made and return to Midwest Office Interiors for corrections.

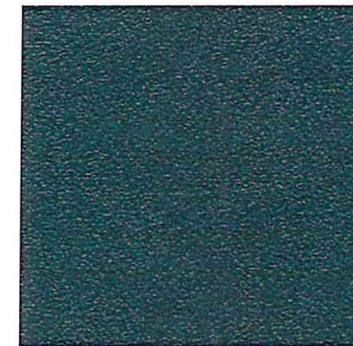
APPROVED
 APPROVED AS NOTED
 REVISE AND RESUBMIT

Signature _____
 Print _____
 Date _____

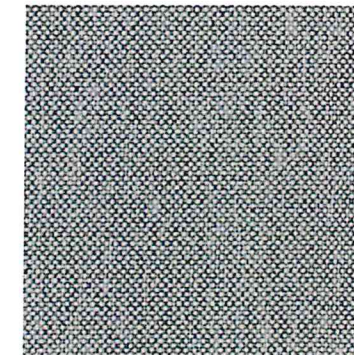
DISCLAIMER: Signing off here acknowledges that you have reviewed all documents in the set.



LOFT LAMINATE



LAVA POLY SHELL



MODE SYCAMORE UPHOLSTERY

M Midwest Office Interiors
 10330 Argonne Woods Drive - Suite 600,
 Woodridge, IL 60517
 Main Phone: 630.850.8700
 www.MidwestOfficeInc.com

IERC COMMON AREAS
 1ST FLOOR GROUP M
 36" DIA STRUCTURE TABLES,
 VICINITY CHAIRS

Page/Sheet 1/1
 Account Exec: C. FISCHER
 Designer: S. HAYDEN
 Print Date: 1/24/2023

REV	REVISION DESCRIPTION	DWN	DATE
1	CHANGE CREDENZA TO 12' WIDE	SH	1/4/2023

DISCLAIMER
 These designs and plans are the property of Midwest Office Interiors, Inc. and have been generated for the client listed above. They are not to be used for construction. This drawing should not be reproduced or distributed for any other project without written permission from Midwest Office Interiors, Inc.

Item #5 - Wellness 1535

C-12



Scale 1/2" = 1'

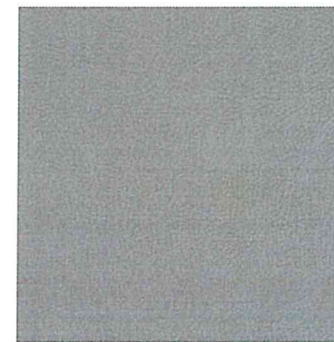


LAZBOY MAX MOBILE RECLINER

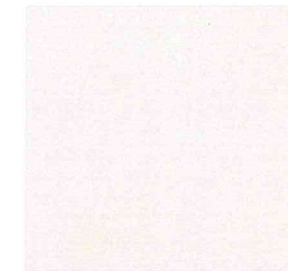


T-10

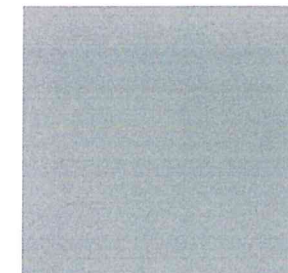
GUNLOCKE BRIEFING LAPTOP TABLE



MAHARAM LARIAT
PEBBLE
UPHOLSTERY



LOFT LAMINATE
TOP



SILVER BASE

DRAWING REVIEW

These drawings must be reviewed by the Owner/Architect/Contractor, or other appropriate representative prior to furniture order. If these drawings are correct mark the appropriate box below. If incorrect, note corrections to be made and return to Midwest Office Interiors for corrections.

- APPROVED
- APPROVED AS NOTED
- REVISE AND RESUBMIT

Signature _____

Print _____

Date _____

DISCLAIMER: Signing off here acknowledges that you have reviewed all documents in the set.



10330 Argonne Woods Drive - Suite 600,
Woodridge, IL 60517
Main Phone: 630.850.8700
www.MidwestOfficeInc.com

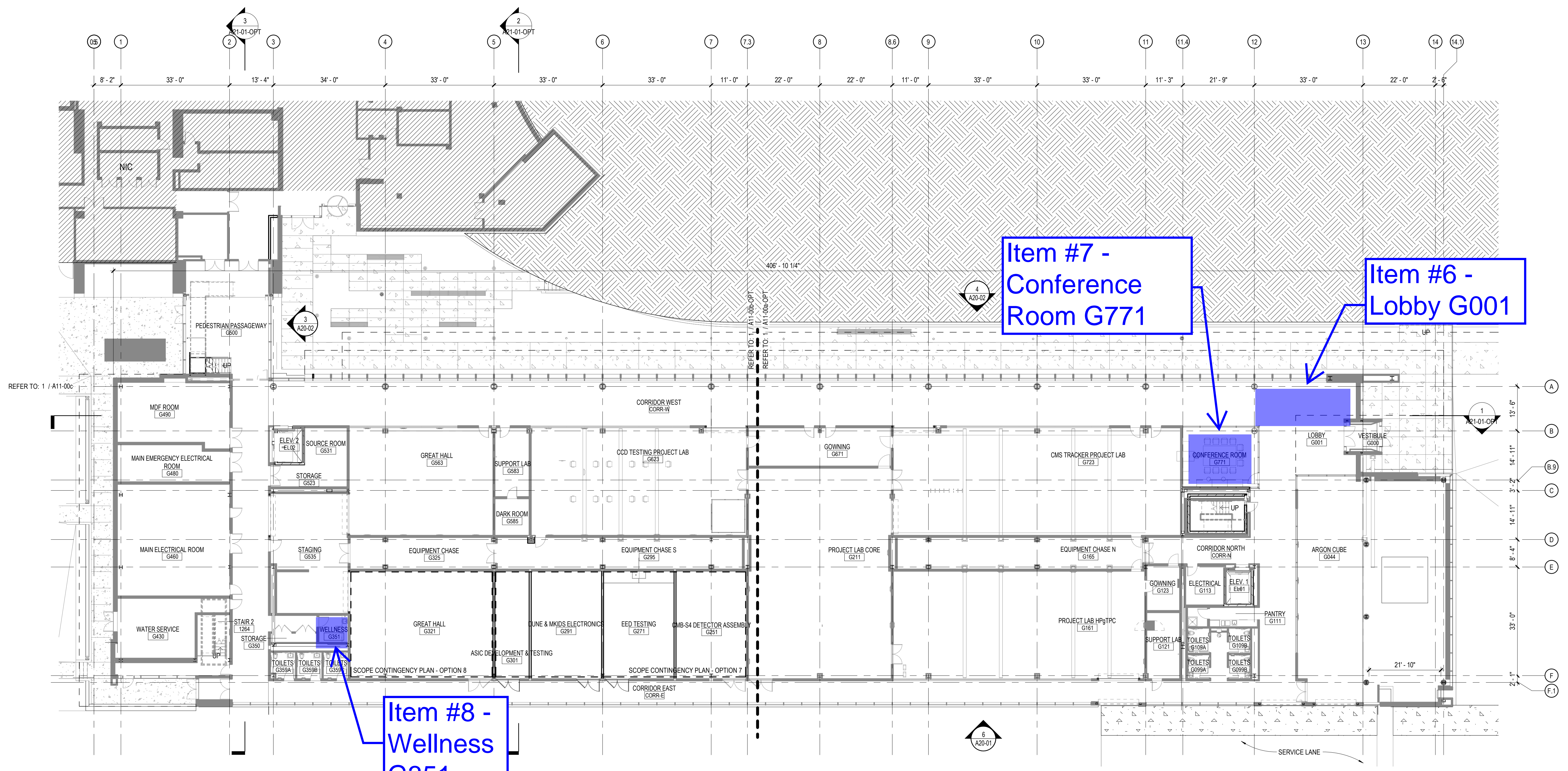
IERC COMMON AREAS
FIRST FLOOR WELLNESS 1535
RECLINER AND
LAPTOP TABLE

Page/Sheet	1/1	REV	REVISION DESCRIPTION	DWN	DATE
Account Exec:	C. FISCHER	1	CHANGE CREDENZA TO 12' WIDE	SH	1/4/2023
Designer:	S. HAYDEN				
Print Date:	1/24/2023				

DISCLAIMER

These designs and plans are the property of Midwest Office Interiors, Inc. and have been generated for the client listed above. They are not to be used for construction. This drawing should not be reproduced or distributed for any other project without written permission from Midwest Office Interiors, Inc.

0 1/2" 1" 2"



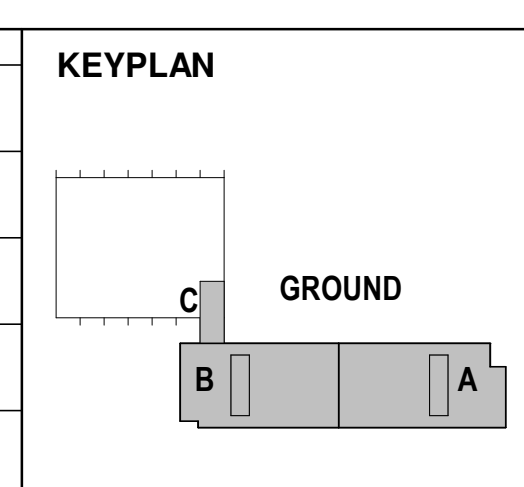
1 IERC GROUND FLOOR PLAN - OPT
1/16" = 1'-0"

IERC GROUND FLOOR

02:1300-000-FERMILAB-IERC-IERC_detailed.rvt

REV.	DATE	DESCRIPTIONS	REVISIONS
03.11.20	FD-13 100 FINAL DESIGN		

A/E CONSULTANT	DATE
DESIGNED RJ	
DRAWN RC	
CHECKED AJ	
APPROVED MW	



PERKINS + WILL

410 North Michigan Avenue
Chicago, IL 60611
t 312.755.0770
f 312.755.0775
www.perkinswill.com

Copyright © 2016 Perkins+Will

CONSULTANTS

ARUP NORTH AMERICA LTD.
35 E Upper Wacker Dr
Suite 1900
Chicago, IL 60601
t 312.849.5610
www.arup.com

TERRA
225 W. Ohio Street
4th Floor
Chicago, IL 60654
t 312.467.0123
f 312.467.0220
www.terraengineering.com

CCS
1815 S. Meyers Road
Suite 1070
Oakbrook Terrace, IL 60181
t 800.443.8607
f 630.678.0658
www.ccsdifference.com

FERMI NATIONAL ACCELERATOR LABORATORY
UNITED STATES DEPARTMENT OF ENERGY

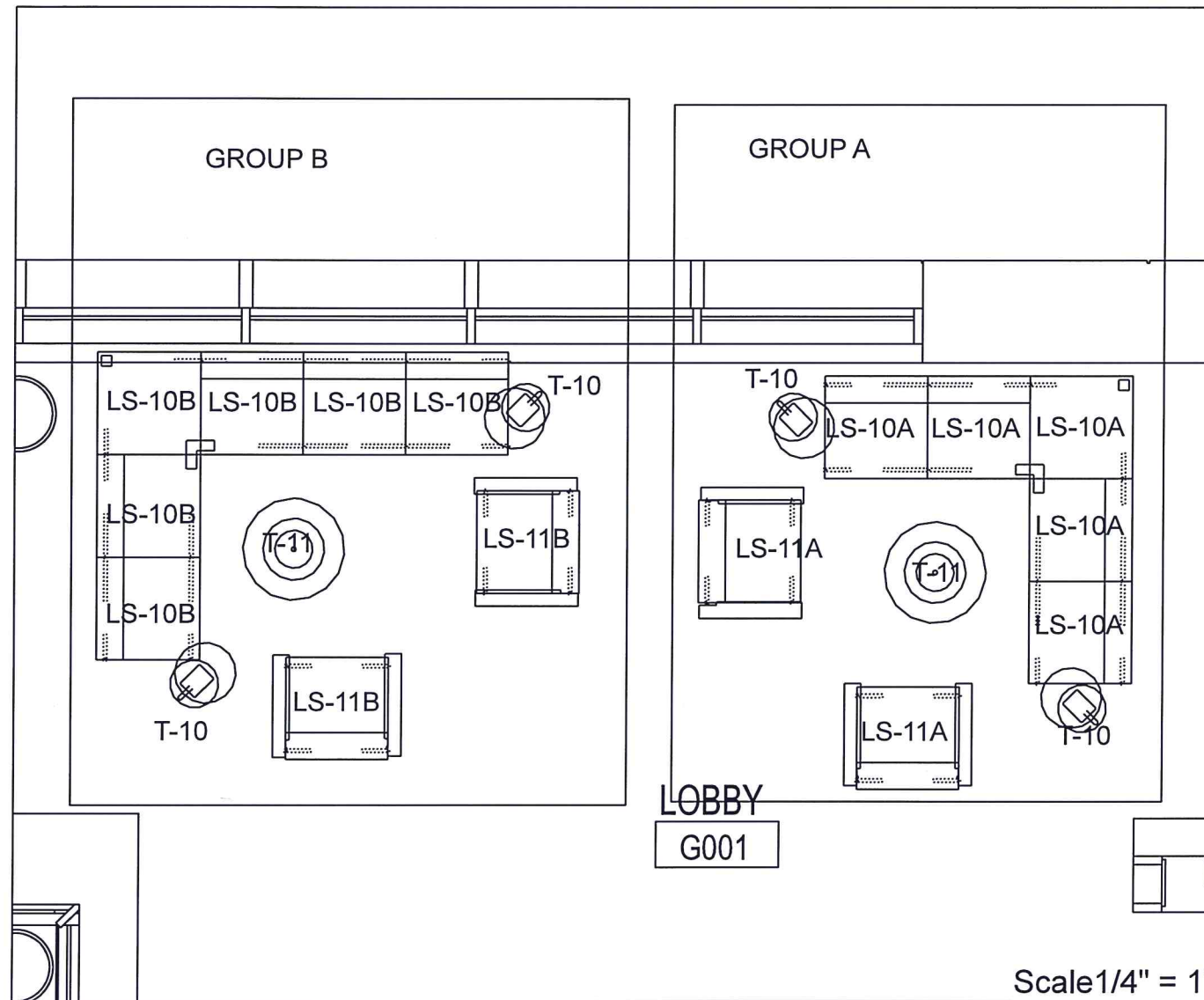
GROUND FLOOR OVERALL PLAN

DRAWING NO. 2-6-1

A10-00-OPT

REV.

Item #6 - Lobby G001

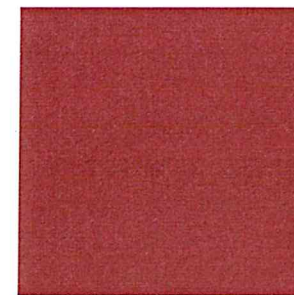


DRAWING REVIEW
 These drawings must be reviewed by the Owner/Architect/Contractor, or other appropriate representative prior to furniture order. If these drawings are correct mark the appropriate box below. If incorrect, note corrections to be made and return to Midwest Office Interiors for corrections.

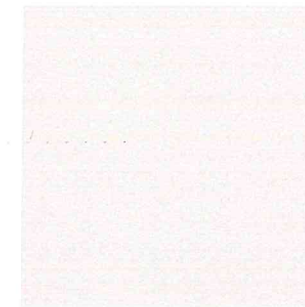
APPROVED
 APPROVED AS NOTED
 REVISE AND RESUBMIT

Signature: _____
 Print: _____
 Date: _____

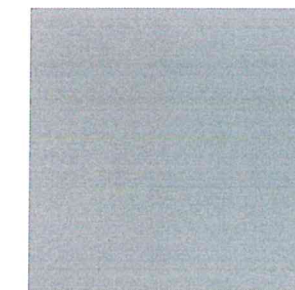
DISCLAIMER: Signing off here acknowledges that you have reviewed all documents in the set.



MANNER EMBER



LOFT



SILVER



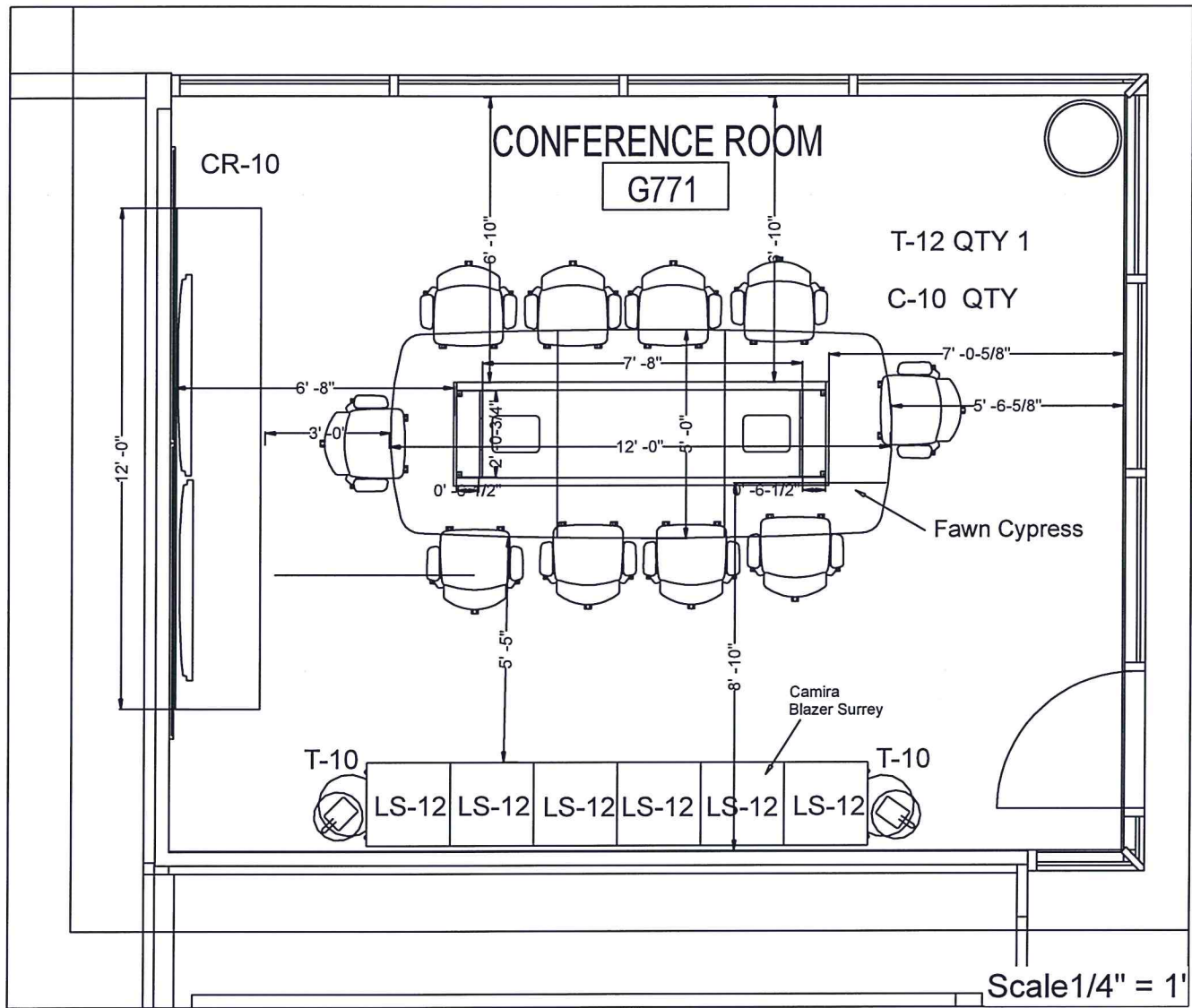
10330 Argonne Woods Drive - Suite 600,
 Woodridge, IL 60517
 Main Phone: 630.850.8700
 www.MidwestOfficeInc.com


IERC COMMON AREAS
GROUND FLOOR LOBBY GROUP A & B
ALLSTEEL JETTY MOD MANNER EMBER 011
LOFT/ SILVER TABLES

Page/Sheet	1/1	REV	REVISION DESCRIPTION	DWN	DATE
Account Exec:	C. FISCHER	1	CHANGE CREDENZA TO 12' WIDE	SH	1/4/2023
Designer:	S. HAYDEN				
Print Date:	1/23/2023				

DISCLAIMER
 These designs and plans are the property of Midwest Office Interiors, Inc. and have been generated for the client listed above. They are not to be used for construction. This drawing should not be reproduced or distributed for any other project without written permission from Midwest Office Interiors, Inc.

Item #7 - Conference Room G771



T-12	C-10	LS-12	CR-10
			
FAWN CYPRESS	MIST MESH	BLAZER SURREY	WILSONART CHILI POWDER LAMINATE
			
FLINT	BRISA CREAM	LOFT T-10	

DRAWING REVIEW

These drawings must be reviewed by the Owner/Architect/Contractor, or other appropriate representative prior to furniture order. If these drawings are correct mark the appropriate box below. If incorrect, note corrections to be made and return to Midwest Office Interiors for corrections.

APPROVED
 APPROVED AS NOTED
 REVISE AND RESUBMIT

Signature: _____
 Print: _____
 Date: _____

DISCLAIMER: Signing off here acknowledges that you have reviewed all documents in the set.

M Midwest Office Interiors
 10330 Argonne Woods Drive - Suite 600,
 Woodridge, IL 60517
 Main Phone: 630.850.8700
 www.MidwestOfficeInc.com

IERC COMMON AREAS
GROUND FLOOR G771 CONFERENCE
 60X144 SOFT ARC TOP IN FAWN CYPRESS
 EXPANDABLE BASE IN CHARCOAL
 EVO CONFERENCE CHAIRS FIXED ARMS

Page/Sheet	1/1	REV	REVISION DESCRIPTION	DWN	DATE
Account Exec:	C. FISCHER	1	CHANGE CREDENZA TO 12' WIDE	SH	1/4/2023
Designer:	S. HAYDEN				
Print Date:	1/23/2023				

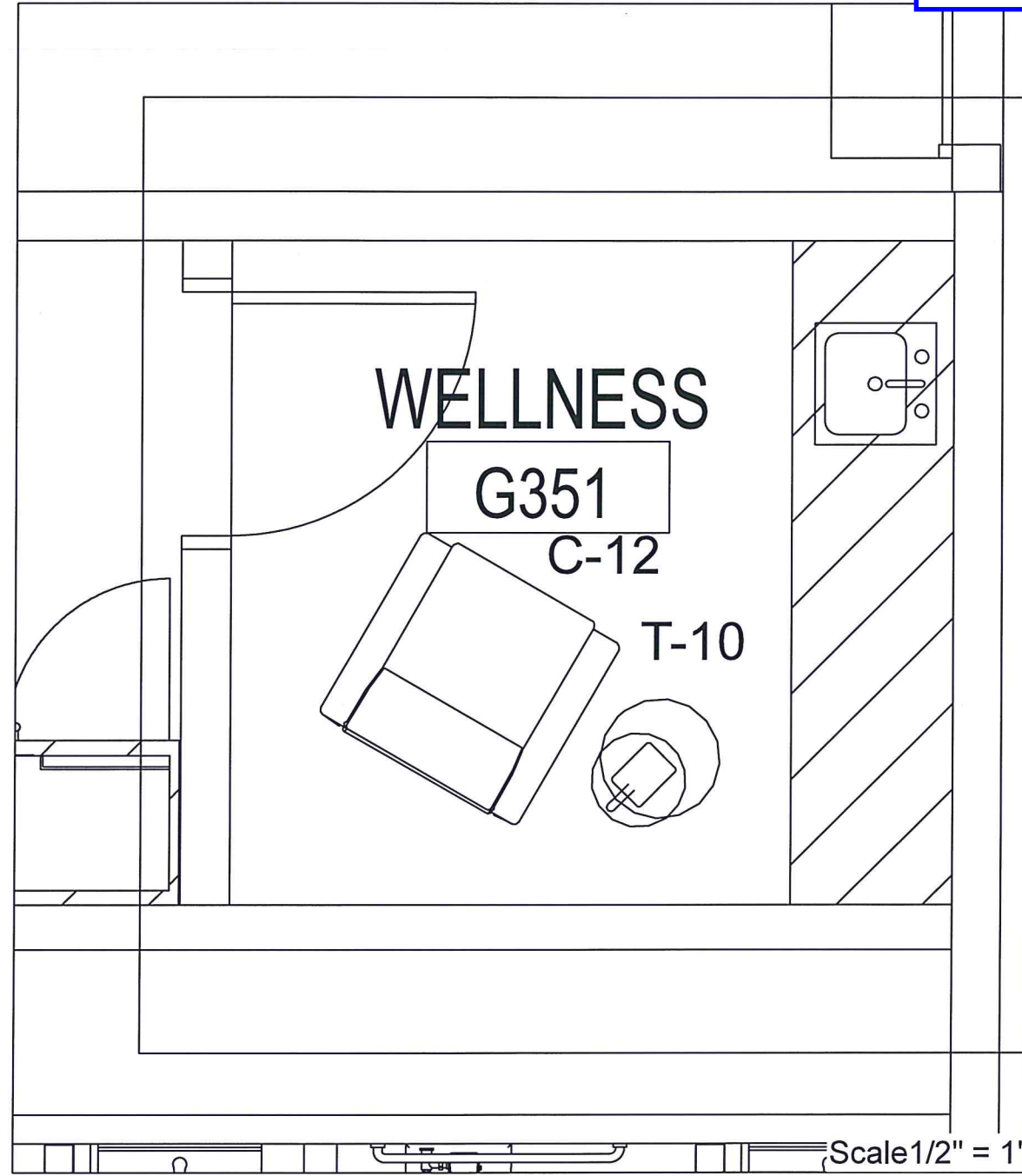
DISCLAIMER

These designs and plans are the property of Midwest Office Interiors, Inc. and have been generated for the client listed above. They are not to be used for construction. This drawing should not be reproduced or distributed for any other project without written permission from Midwest Office Interiors, Inc.

Item #8 - Wellness G351

C-12

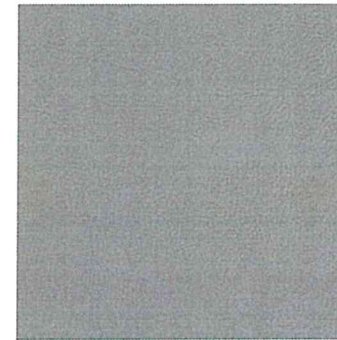
T-10



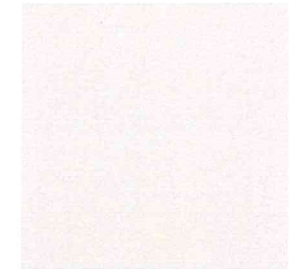
LAZBOY MAX MOBILE RECLINER



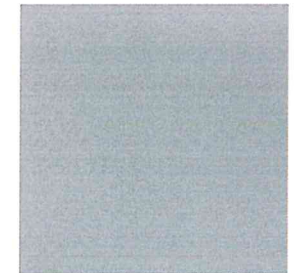
GUNLOCKE BRIEFING LAPTOP TABLE



MAHARAM LARIAT
PEBBLE
UPHOLSTERY



LOFT LAMINATE
TOP



SILVER BASE

DRAWING REVIEW

These drawings must be reviewed by the Owner/Architect/Contractor, or other appropriate representative prior to furniture order. If these drawings are correct mark the appropriate box below. If incorrect, note corrections to be made and return to Midwest Office Interiors for corrections.

- APPROVED
- APPROVED AS NOTED
- REVISE AND RESUBMIT

Signature _____

Print _____

Date _____

DISCLAIMER: Signing off here acknowledges that you have reviewed all documents in the set.

REV	REVISION DESCRIPTION	DWN	DATE
1	CHANGE CREDENZA TO 12' WIDE	SH	1/4/2023